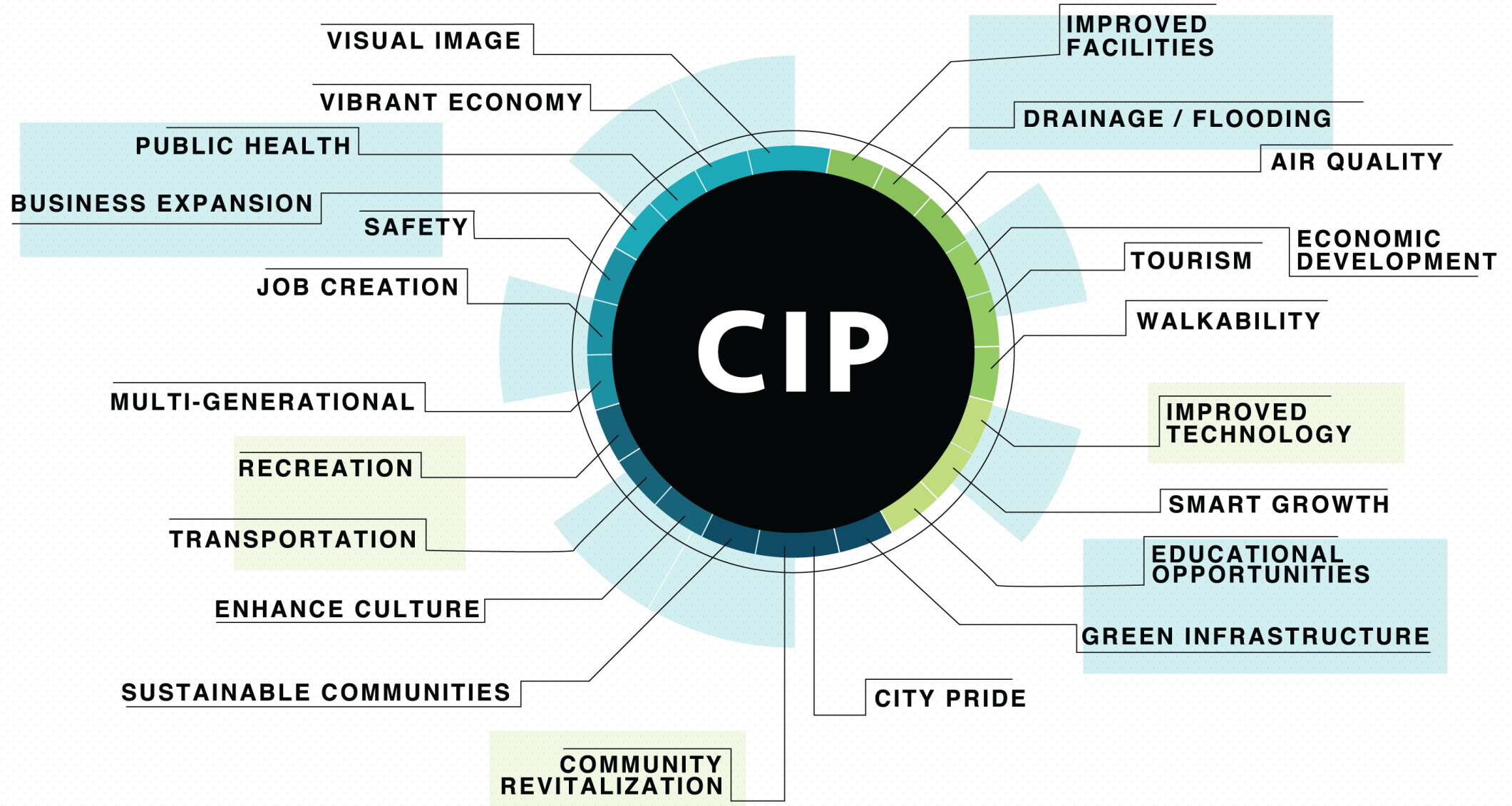


# Capital Improvement Plan Impacts





# Program Benefits



# RESULTS FY 2017 AND FY 2018

MONTH	REQUISITIONS FY 2017	REQUISITIONS FY 2018	CUMMULATIVE TOTAL 2017	CUMMULATIVE TOTAL 2018
SEPT	35,634,523.15	3,186,617.17	35,634,523.15	3,186,617.17
OCT	14,209,149.53	3,094,991.05	49,843,672.68	6,281,608.22
NOV	3,565,688.78	2,832,933.47	53,409,361.46	9,114,541.69
DEC	2,208,778.89	5,609,963.57	55,618,140.35	14,724,505.26
JAN	755,706.59	8,364,979.73	56,373,846.94	23,089,484.99
FEB	2,208,778.89	17,503,363.73	58,582,625.83	40,592,848.72
MAR	4,104,482.27	5,466,881.55	62,687,108.10	46,059,730.27
APR	4,162,096.52	36,770,540.55	66,849,204.62	82,830,270.82
MAY	6,991,736.76	13,082,646.83	73,840,941.38	95,912,917.65
JUN	1,600,302.11	6,482,320.09	75,441,243.49	102,395,237.74
JUL	3,568,103.31	6,969,439.42	79,009,346.80	109,364,677.16
AUG	940,335.85	1,774,159	79,949,682.65	111,138,836*
<b>TOTAL</b>	<b>79,949,682.65</b>	<b>111,138,836*</b>	<b>Difference +\$31.2 M</b>	

\* Does not include the \$60.2 M for the Eastside Regional Park and the three Recreation Centers awarded in July and August



# 2018 EXPENDITURES

MONTH	PAYMENTS FY2017	PAYMENTS FY2018
SEPT	153,571	976,695
OCT	2,496,790	5,289,143
NOV	2,961,769	6,391,379
DEC	2,802,166	5,684,431
JAN	3,314,061	7,161,059
FEB	3,762,691	4,474,605
MAR	5,274,341	6,488,690
APR	3,859,434	6,863,628
MAY	6,772,522	9,852,617
JUN	7,256,910	4,356,165
JUL	6,302,026	7,664,294
AUG	13,399,725	4,767,228
<b>TOTAL</b>	<b>58,356,005</b>	<b>69,969,935</b>

\* Excludes Airport and Environmental Services

# 74 Projects

7600 Boeing and Chevron Gas Station Demolition  
Animal Services Dog Run  
Argal Park  
Aztec & Navajo SW Gap NIP III  
Bluetooth Wait Systems at Paso Del Norte POE  
Bluetooth Wait Systems at Stanton POE  
Borderland NIP  
Boys Club Futsal  
Bus Pad Enhancements Phase 1  
Bus Pad Enhancements Phase 2  
Cactus Park Playground  
Carolina Bridge  
Carolina Speed Indicator Signs NIP III  
Centro San Vicente  
Cielo Vista Sidewalk  
Cincinnati Improvements  
Citywide Play Equipment  
Clifford Pond NIP  
Cohen Reimagined  
Cohen Stadium Canopy  
Coyote Cave Playground Canopy  
Dist 1 Curb Cuts at Ridge and Hilary  
Dist 1 Sidewalk Gaps at Bauxite and Chromite  
District 8 Wheelchair Ramps at Fonseca and Delta  
District 8 Sidewalk Gap at Tobin  
Downtown Transfer Center Restrooms Addition & Remodeling

East Cave Playground Canopy  
Eastside Sports Complex  
Eddie “Hirby” Beard Park  
El Paso Landfill-Phase II, Cells 11-14  
El Paso Zoo Carousel  
EPIA Concourse B Meet and Greet  
EPIA Maintenance Lounge and Nursing Room  
Escondido, Robles & Espada SW Gaps NIP III  
Fiber Optic Backbone  
Fire Station 21  
Galatzan Daycare Canopy  
Happiness Senior Center  
Houston Park NIP  
HT Ponsford Park NIP  
Isela Rubalcava  
James Grant Area Residential Street Lights NIP III  
Kenworthy/Sun Valley signal  
Love Rd NIP  
Manhattan Heights NIP  
Marty Robbins Playground Canopy  
Montoya Heights Park Improvements NIP III  
Mountain View Park Lights Improvements NIP III  
Museum of Art Gallery Upgrade  
Northgate Transfer Center  
NTMP Phase II  
Pebble Hills/Rich Beem signal  
Pebble Hills/Sun Fire signal  
Playa Drain Trail

Polly Harris Improvements  
Portable Restroom Enclosures  
Pueblo Viejo Park Improvements NIP III  
Ramona Elementary  
Ramos, Little Flower, Manning  
Reconstruction  
Resler and Northern Pass Signal  
Rim and Hague  
San Jacinto Café- Electrical Modifications  
Sgt Jesus Vasquez  
Socorro Rd. Landscaping Improvements NIP II  
Spray Park Enhancements  
Springwood  
Summit Fillmore Park Improvements NIP III  
Villa Mario Roof  
Vista Del Valle Playground Canopy  
Wayne Retention Pond NIP  
Westside Natatorium  
Willie Sanchez Rosales Family Center  
Wren Ave Reconstruction  
Ysleta HAWK traffic signals





# Impacts for spending **\$70,000,000**

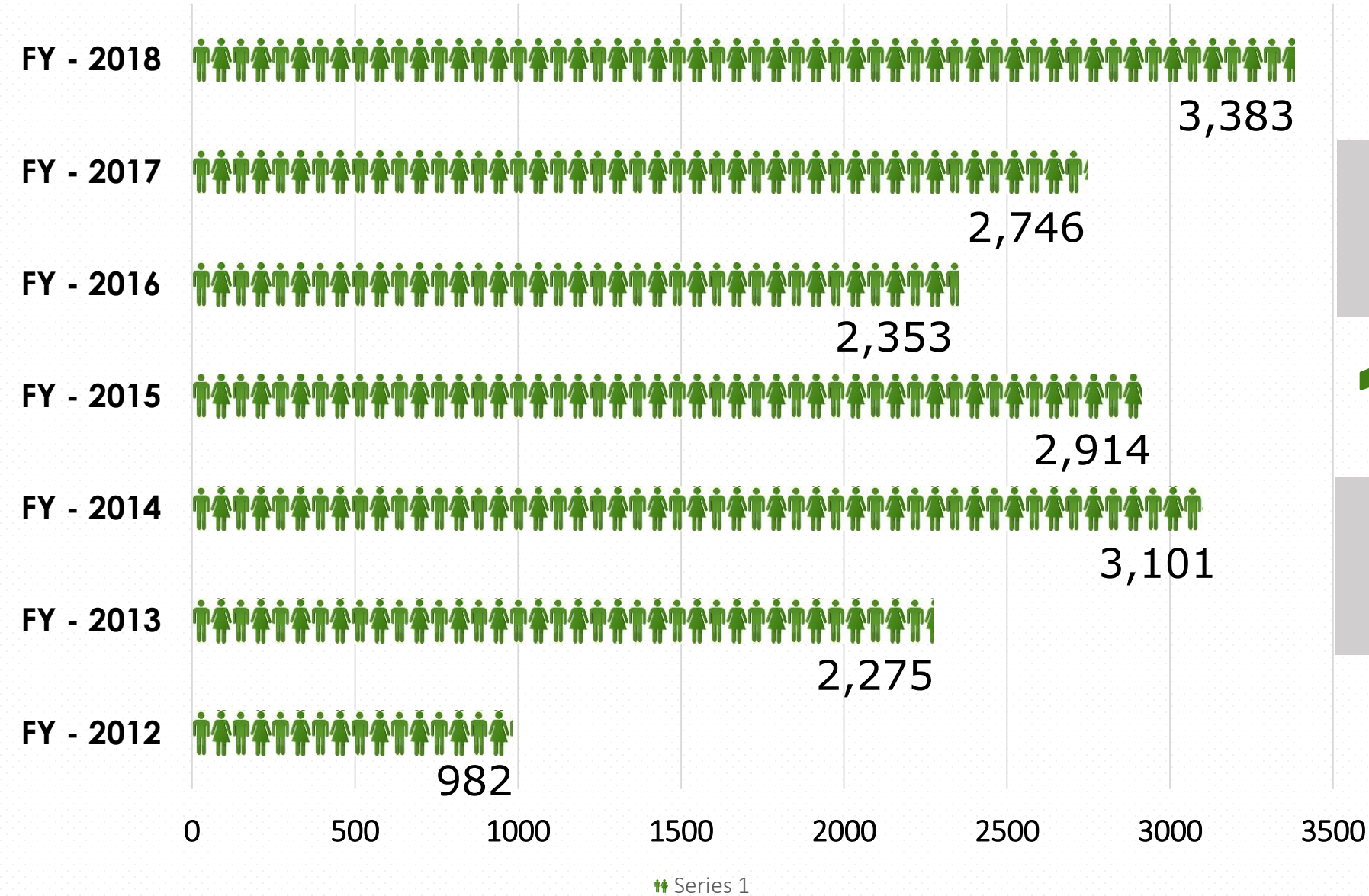
Approximately **\$35,000,000** spent on labor costs

**\$ 1 million**  
construction  
projects involves  
roughly **\$500,000** in  
**labor costs**

$$\begin{array}{r} \$500,000 \\ \times \quad 70 \\ \hline \$35,000,000 \end{array}$$



# JOBS CREATED VIA CIP



**Capital Projects  
have generated  
approximately**

**17,754 jobs**

**from September 2011  
through August 2018**

\* CID construction contracts only



# SPENDING AND EMPLOYMENT

## Spending Impact 2018

• Direct	\$70.0 M
• Indirect and Induced	\$42.0 M
• Total	<u>\$112.0 M</u>

## Employment Impact 2018

• Direct (Total)	3,383
• Indirect & Induced	1,691
• Total Jobs	<u>5,074</u>

### One-time project impacts:

- Direct construction spending associated with CIP projects
- Direct, Indirect/Induced jobs
- More than 5,000 jobs supported by construction

# **Companies Supported by the CIP in 2018**



# Contracts awarded in FY-2018

## 35 Contractors

11

ACCENT LANDSCAPE CONTRACTORS INC  
ALL TRADES ELECTRIC  
ALPHA BUILDING CORPORATION  
ARROW BUILDING CORP.  
BLACK STALLION LB CONSTRUCTION  
DANTEX CONSTRUCTION CO  
EXERPLAY INC.  
GLOBE BUILDERS, LLC  
HENSEL PHELPS CONSTRUCTION CO.  
HORIZONE CONSTRUCTION I, LTD  
J. CARRIZAL GENERAL CONSTRUCTION  
JAG ELECTRIC

JAR CONCRETE, INC  
JORDAN FOSTER CONSTRUCTION, LLC  
KEERS REMEDIATION INC  
KEYSTONE GC, LLC  
KIRKLAND CONSTRUCTION L.L.L.P.  
MARTINEZ BROS. CONTRACTORS, LLC  
MEDLOCK COMMERCIAL CONTRACTORS, LLC  
MIRADOR ENTERPRISES  
NOBLE GENERAL CONTRACTORS, LLC  
ORDONEZ REMODELING  
PAVEMENT MARKINGS, INC  
PRIDE GENERAL CONTRACTORS LLC

PRIME IRRIGATION & LANDSCAPE INC.  
SAAB SITE CONTRACTORS, L.P  
TAO INDUSTRIES, INC DBA HAWK  
CONSTRUCTION  
THE ROOF & METAL CO.  
VELIZ CONSTRUCTION, LLC  
VENEGAS ENGINEERING MANAGEMENT  
AND CONSTRUCTION, INC.  
VISTACON VENTURES, LLC  
VONANZA CONSTRUCTION  
WESTSIDE WELDING INC  
ZTEX CONSTRUCTION, INC.



# 235 Sub-Contractors

A & A CONSTRUCTION  
A BROTHERS  
A. CHAVIRA PAINTING & DRYWALL  
A.T.S., INC.  
ABM CONSTRUCTION CO  
ACCENT LANDSCAPE CONTRACTORS INC.  
ACCURATE CORING  
ADCO CONTRACTOR GROUP  
ADVANCED SECURITY CONTRACTORS, INC.  
AJ AIR FIELD LIGHTING, LLC  
ALAMO GENERAL CONTRACTORS, INC.  
ALDERTE & ASSOCIATES  
ALLEN CONCRETE, INC.  
ALLIANCE RIGGERS & CONSTRUCTORS  
ALLIED PAVING COMPANY OF EL PASO INC  
ALS REINFORCING STEEL, INC.  
AMC INTERIORS  
AMIGO ELECTRIC  
ANJ CONCRETE  
APCO BUILDING SPECIALTIES  
AREA IRON & STEEL WORKS, INC.  
ARROW BUILDING CORP.  
ASSURANCE FIRE PROTECTION  
AVANTI FLOOR CONTRACTOR, INC  
B & M BUILDING SERVICES  
B. DANIELS CONTRACTORS, LLC  
BAIN CONSTRUCTION  
BARRAZA CODE ELECTRIC, INC.  
BARRETT AIRWORKS  
BELMONT'S AIR CONDITIONING INC  
BELT CON CONSTRUCTION, INC.  
BELTCON CONSTRUCTION INC  
BELTRAN ELECTRICAL CONTRACTORS, INC.  
BEST IRON WORKS AND SCREENS, INC  
BFC INDUSTRIAL SERVICES LLC DBA ATLAS  
RIGGING & TRANSFER  
BLACK STALLION LB CONSTRUCTION  
BORDER DEMOLITION & ENVIRONMENTAL, INC.  
BORDER DRILLING  
BOWEN INDUSTRIAL CONTRACTORS, INC.  
BPSI  
C&A FLOORING  
CABALLERO ELECTRIC  
CALIFORNIA COMMERCIAL POOLS  
CAMBRO CONSTRUCTION, INC.  
CANYON CONTRACTING DIRT & PAVING, INC.  
CANYON GLASS CO.

CARDINAL/INTERNATIONAL GROOVING &  
GRINDING LLC  
CARLOS RAMIREZ DBA CHR TENNIS & BASKETBALL  
SURFACE  
CDL PLUMBING CO INC.  
CEMROCK LANDSCAPES, INC.  
CEMROCK LANDSCAPES, INC.  
CENTURY FIRE  
CG CONSTRUCTION AND ARCHITECTURAL  
MILLWORK  
CLASSIC MILLWORK & PRODUCTS, INC.  
COMMERCIAL ROOFING SYSTEMS, INC.  
CONCRETE PUMPING INC.  
CONSTRUCTION ENVIRONMENTAL CONSULTING  
INC.  
CONSTRUCTION RECRUITERS AMERICA STAFFING,  
INC.  
CONTRACTOR'S BARRICADE SERVICE INC. DBA  
APACHE BARRICADE & SIGN  
CONTRACTORS TILES PLUS, INC  
COOL SOLUTIONS  
CRANE SERVICES, INC.  
CUSTOM GLASS & CABINETS  
DANTEK SYSTEMS  
DH UNDERGROUND, INC.  
DISPLAY SERVICES, INC.  
DIVERSIFIED INTERIORS  
DLC CONSTRUCTION  
DMDICKASON STAFF LEASING  
DUSTROL  
E.M.I CONSTRUCTION, LLC  
EAGLE VIEW CONTRACTORS LLC  
EGA PAVING  
EGOLI INSTALLATIONS  
EL PASO A.R.C ELECTRIC, INC.  
EL PASO CONCRETE CUTTERS  
EL PASO FLOW CONTROL  
EL PASO GENUINE CONSTRUCTION  
EL PASO KING'S PLUMBING  
EL PASO TURNKEY ENTERPRISE LLC.  
EMI CONSTRUCTION, LLC  
EMPIRE ROOFING, INC.  
EMPIRE WELDING AND FABRICATION  
EP WRAP IT INSULATION LLC  
ESSENTIAL FIRE PROTECTION  
EXERPLAY INC.  
F.A.L.C ENTERPRISE, LLC  
F.T CONSTRUCTION INC  
FA ELECTRICAL SERVICE L.L.C  
FA ELECTRICAL SERVICE LLC  
FALC ENTERPRISES LLC

FAVELA CONSTRUCTION INC.  
FIERRO CONSTRUCTION  
FIERRO CONSTRUCTION  
FIRST QUALITY CONSTRUCTION INC.  
FIVE STAR AUTOMATIC FIRE PROTECTION  
FLOORS INC.  
FOUR STAR ROOFING  
FOUR STAR ROOFING  
FUNK AND COMPANY  
GAMBOA ELECTRIC  
GONZALEZ MECHANICAL DBA GONZALEZ HEATING  
AND COOLING  
GORHAM ELECTRIC, INC.  
GORMAN INDUSTRIAL SUPPLY  
GORMAN MOISTURE PROTECTION  
GROUNDBREAKERS LLC  
GROUP GENUINE CONTRACTORS, INC.  
GRV INTEGRATED ENGINEERING SOLUTIONS LLC  
H & M HOME REPAIRS  
HARDY HOLE DRILLING  
HB WELDING & FABRICATING  
HELLAS CONSTRUCTION, INC.  
HENRY TRUJILLO, INC.  
HENRY'S PLUMBING  
HRT ROOFING  
INNOVATIVE SURFACE OF TEXAS, INC.  
INTEGRATED FIRE SYSTEMS AND CONCEPTS, LLC  
INTERNATIONAL LINING TECHNOLOGY  
IRON SQUARE FOOT INC  
J & H CONCRETE & POST TENSION, INC.  
J & R ROOFING  
J. GUILLÉN PAINTING & REMODELING  
J.D. STEEL CO, INC.  
JA HEATING & COOLING  
JACE CONTRACTING SERVICES, INC.  
JAG ELECTRIC  
JMR DEMOLITION LTD  
JORDAN FOSTER CONSTRUCTION, LLC DBA  
INFRASTRUCTURE CONSTRUCTORS  
KASCO STRUCTURES LLC  
KD SCHOLTEN CO.  
KELLEY BROS  
KENDRICK ELECTRIC CORPORATION  
KIMMINS KOATINGS/ T&T STAFFING  
LABOR MAX STAFFING (JFC)  
LEEDSMAN CONSTRUCTION INC. DBA TRAFFIC  
CONTROL SPECIALIST  
LET'S PLAY SAFETY SURFACING, LLC

LMJ CONSTRUCTION CO LLC  
LOMELI AND SONS  
LONGHORN ELECTRICAL SERVICES, INC.  
LVR CARPET CENTER  
MANNY CARRIZAL PAINTING CO., INC.  
MANNY'S LANDSCAPE & IRRIGATION  
MARCOS GLASS COMPANY  
MARTINEZ CONCRETE/ ARTURO MARTINEZ  
MARTINEZ IRRIGATION & LANDSCAPES, INC.  
MASTER CUTS  
MATA'S GARAGE DOORS & DOCKS  
MATRIX SPECIAL SYSTEMS  
MEADOW VISTA MASONARY, INC  
MESA ELECTRIC CONTRACTOR INC.  
MIMBELA CONTRACTORS, INC.  
MINER EL PASO  
MIRELES JERRY MASONRY  
MRD LANDSCAPING & IRRIGATION  
MRD LANDSCAPING & IRRIGATION  
MRD LANDSCAPING AND MAINTENANCE, CORP.  
NATIONAL RESTAURANT SUPPLY CO.  
NATIONWIDE REBAR, INC.  
NORCON OF NEW MEXICO  
P A CONCRETE  
PAC'S CONSTRUCTION  
PAVEMENT MARKINGS, INC.  
PC AUTOMATED CONTROLS, INC.  
PENHALL CO, INC.  
PERFORMANCE GLASS & ALUMINUM, INC.  
PERSONELL RESPONSE (PRT)  
PRECISION PLUMBING  
PRIME IRRIGATION & LANDSCAPE, INC.  
PROTECH ROOFING SYSTEMS, LLC  
PRT  
PTERIS GLOBAL  
PUENTES CONCRETE CONTRACTORS  
QUARRY HILLS CONSTRUCTION  
QUEST CONTRACTING INC.  
R MIMBELA CONTRACTING INC  
RA ROYAL POOLS, LLC  
RAMON NAJERA DBA MONOPOLY FLOORS  
REBEL INDUSTRIES, INC  
RICK RODRIGUEZ CONSTRUCTION  
RIVERBEND CRANE  
ROAD SURFACE RECYCLING, INC.  
ROBLES 1 DEMOLITION, LLC  
SANCHEZ CONSTRUCTION AND LANDSCAPING  
SATARAIN CONSTRUCTION, INC.  
SCOTT'S FENCING CO, INC  
SETCON LLC.

SIGN DESIGN  
SIGN INTERNATIONAL INC.  
SMART TECH  
SOUTHWEST DÉCOR  
SOUTHWEST HAZARD CONTROL INC.  
SOUTHWESTERN / MGR OF TEXAS  
SOUTHWESTERN INDUSTRIAL CONTRACTORS AND  
RIGGERS, INC.  
SPORTS INSTALLATION  
STAR CITY SEALANTS  
STEEL SPECIALTIES, INC.  
SUNSETS WEST, INC  
SUNTECH MECHANICAL INC.  
SUPREME GLASS COMPANY  
T & T STAFF MANAGEMENT  
TAPIA'S CONCRETE INC.  
T-DYNE CONTRACTORS, LLC  
TECH-VAC, LLC  
TEXAS BARRICADE SERVICE/ TRAFFIC BARRICADE  
SERVICE, INC.  
TEXAS ELECTRICAL CONTRACTORS, LLC  
TEXAS SHOTCRETE INC  
THE ED-CO CORPORATION  
THE EDGE CONTRACTORS  
THE GLASS HOUSE, INC  
THE ROOF & METAL CO.  
THYSSSENKRUPP ELEVATOR AMERICAS  
TIERRA FIRME  
TKO CONSTRUCTION SERVICES  
TOTAL MECHANICAL  
TRADESMEN INTERNATIONAL LLC  
TRANS-AMERICAN COMMUNICATIONS, INC.  
TRI-STATE ELECTRIC  
TYLER REINFORCING  
VALLEY PAVEMENT SEALING, LLC  
VENEGAS ENGINEERING MANAGEMENT AND  
CONSTRUCTION, INC.  
VFC  
VOLTER ELECTRICAL CONSTRUCTION  
VORTEX USA, INC.  
WESTERN DEWATERING, INC.  
WESTERN STATES FIRE PROTECTION COMPANY  
WESTSIDE WELDING INC  
Y&Y FENCE  
YEAR ONE ELECTRICAL CONTRACTOR, LLC  
YOUR ELECTRICAL CONTRACTORS  
ZAYZA IRRIGATION AND LANDSCAPE

# 151 Companies

ABACUS PROJECT MANAGEMENT INC  
ACCENT LANDSCAPE CONTRACTORS INC  
ACM DESIGNS LLC  
ADALTA ENGINEERING GROUP LLC  
ADVANCED SECURITY CONTRACTORS INC  
AECOM TECHNICAL SERVICES INC  
AIA ENGINEERS LTD  
ALEGRO ENGINEERS L.P.  
ALL TRADES ELECTRICAL CONTRACTORS  
ALPHA BUILDING CORPORATION  
AMAZON  
AMEC ENVIRONMENTAL & INFRASTRUCTURE INC  
AMEC FOSTER WHEELER ENVIRONMENT  
ARCADIS US INC  
ARROW BUILDING CORP.  
ATKINS NORTH AMERICA INC  
BAKER GLASS COMPANY INC  
BATH ENGINEERING  
BAZAAR UNIFORMS  
BECK TOTAL OFFICE INTERIORS  
BIG MEDIA INC.  
BLACK STALLION CONTRACTORS INC  
BORDER DEMOLITION & ENVIRONMENTAL INC  
BORDER STATES INDUSTRIES INC  
BROCK & BUSTILLOS INC  
BURNS & MCDONNELL  
BUSINESS ENVIRONMENTS  
CARL DANIEL ARCHITECTS  
CASPIAN CONSTRUCTIN COMPANY  
CDM SMITH INC

CDW GOVERNMENT INC  
CEA ENGINEERING GROUP  
CENTRO SAN VICENTE  
CHAPMAN FIRM PLLC  
CITY FENCE & PIPE CO INC  
CONDE INC  
CQC TESTING & ENGINEERING LLC  
CSA DESIGN GROUP  
DAHILL OFFICE TECH COORP  
DANTEX CONSTRUCTION CO  
DATA TRANSFER SOLUTIONS, LLC  
DECISION TREE INC  
DELL OPTIPLEX  
DESERT COMMUNICATIONS INC  
DISPLAY SERVICES INC  
EARTHCAM.NET  
ECM INTERNATIONAL INC  
EL PASO ELECTRIC  
EL PASO INDEPENDENT SCHOOL DISTRICT  
EL PASO JAG  
EL PASO WATER UTILITIES  
ELECTRIPRO INC.  
EMC ENGINEERS  
EP COUNTY WATER IMPROVEMENT DISTR 1  
ESSCO ENVIRONMENTAL INC  
EXERPLAY INC.  
FIRST BAPTIST CHURCH  
FORD POWEL AND CARSON  
FORT BLISS WATER SERVICES CO.  
FRANK X SPENCER AND ASSOCIATES INC

FULL TURN INTERIOR  
GAYLE-REID APPRAISAL SERVICES INC  
GLOBE BUILDERS, LLC  
GOPHER SPORTS  
GRAYBAR ELECTRIC COMPANY  
GREENWAY STUDIO LLC.  
GRV INTEGRATED ENGINEERING SOLUTIONS, LLC  
HAWK CONSTRUCTION  
HD SUPPLY  
HENSEL PHELPS CONSTRUCTION CO.  
HNTB CORPORATION  
HORIZONE CONSTRUCTION I, LTD  
HUITT-ZOLLARS INC  
IN\*SITU ATCHITECTURE  
J. CARRIZAL GENERAL CONSTRUCTION  
JAG ELECTRIC  
JAR CONCRETE, INC  
JAR CONSTRUCTION  
JMR DEMOLITION LTD  
JORDAN FOSTER CONSTRUCTION, LLC  
JULIE ERICSON GEREDA  
KEERS REMEDIATION INC  
KEYSTONE GC, LLC  
KIRKLAND CONSTRUCTION L.L.L.P.  
LAND-MARK PROFESSIONAL  
MARTINEZ BROS CONTRACTORS LLC  
MARTINEZ BROS. CONTRACTORS, LLC  
MEDLOCK COMMERCIAL CONTRACTORS LLC  
MERIDIAN GREEN WORKS LLC  
MIJARES-MORA ARCHITECTS INC

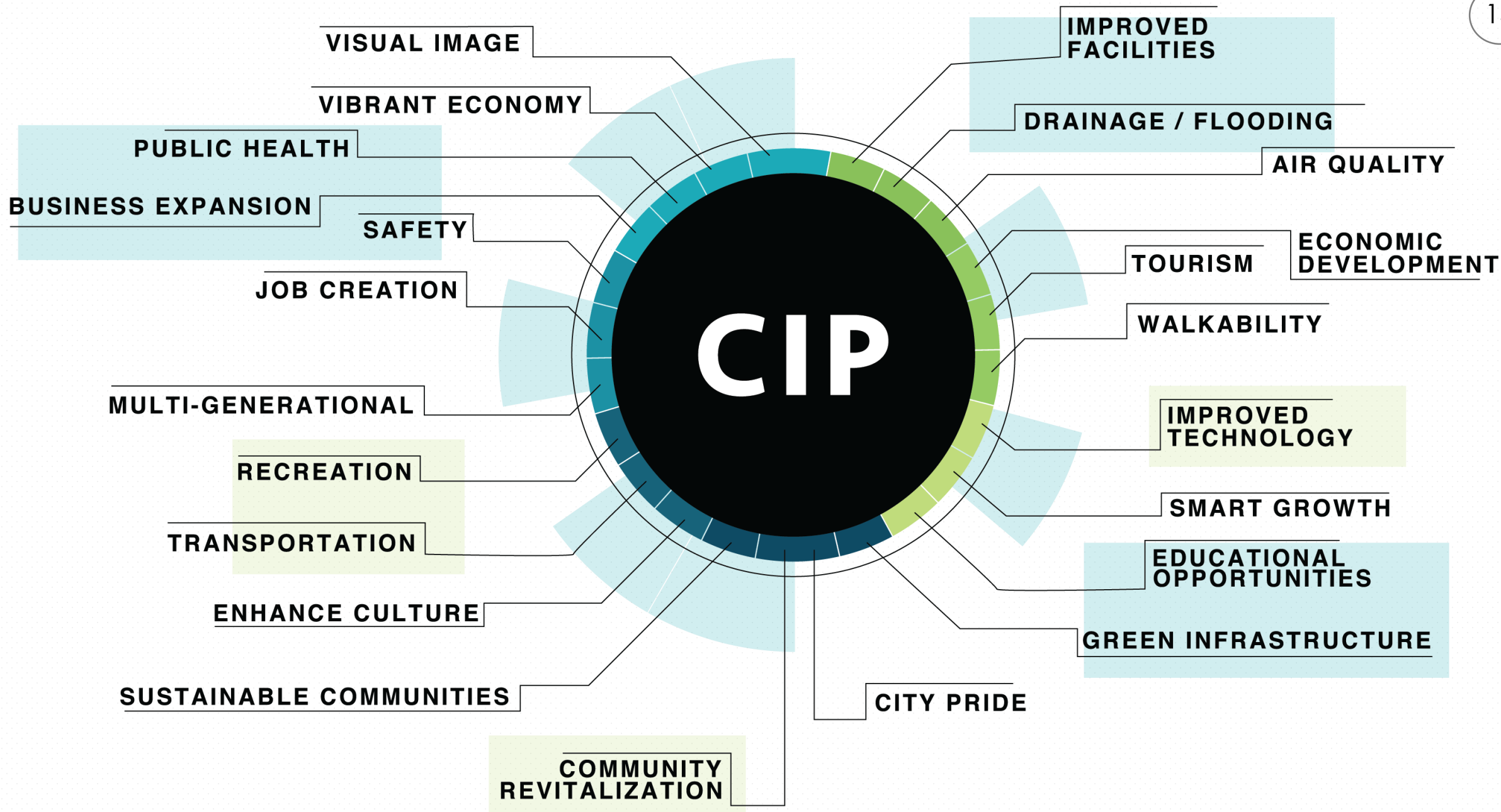
MIRADOR ENTERPRISES  
MITHOFF BURTON PARTNERS, INC.  
MNK ARCHITECTS INC  
MOORE ARCHEOLOGICAL CONSULTING INC  
MORENO CARDENAS INC  
MOUNTAIN STAR SPORTS GROUP  
MUSCO SPORTS LIGHTING, LLC  
NACTO  
NATIONAL OFFICE FURNITURE  
NEIL J DEVEREAUX  
NOBLE GENERAL CONTRACTORS, LLC  
OFFICE DEPOT  
ONEOK INC  
OPPORTUNITY CENTER FOR THE HOMELESS  
ORDONEZ REMODELING  
PARKHILL SMITH & COOPER INC  
PAVEMENT MARKINGS, INC  
PERKY PRESS  
PLAYWELL GROUP INC.  
PMI PAVEMENT MARKING INC  
PRIDE GENERAL CONTRACTORS LLC  
PRIME IRRIGATION & LANDSCAPE INC.  
PROFESSIONAL SERVICE IND - PSI INC  
QANNEX CORP  
QUANTUM ENGINEERING CONSULTANTS INC  
RALPH SELLERS & ASSOCIATES  
RECREONICS, INC  
RIO GRANDE CONT. FURN., INC  
ROMTEC  
ROOF METAL & CONSTRUCTION

ROTO ROOTER  
SAAB SITE CONTRACTORS, L.P  
SEA CREATURES SALTWATER FISH  
SHI GOVERNMENT SOLUTIONS INC  
SIGMA TECHNOLOGY SOLUTIONS INC  
SITES SOUTHWEST LTD CO  
SLI ENGINEERING INC  
SOUTHWESTERN MILL DIST. INC.  
SPECTRUM IMAGING TECH. INC.  
STANTEC CONSULTING SERVICES, INC  
SUNDT CONSTRUCTION  
SWA GROUP  
TAO INDUSTRIES, INC DBA HAWK CONSTRUCTION  
TAPCO SAFE TRAVELS  
TERRACON CONSULTANTS INC  
TEXAS DEPT OF TRANSPORTATION  
TEXAS ELECTRICAL CONTRACTORS  
TEXAS TRANSPORTATION INSTITUTE  
THE JOC GROUP  
THE LIFEGUARD STORE INC  
THE ROOF & METAL CO.  
VARIDESK  
VELIZ CONSTRUCTION, LLC  
VENEGAS ENGINEERING MANAGEMENT AND CONSTRUCTION, INC.  
VISTACON VENTURES, LLC  
VONANZA CONSTRUCTION  
WALTER P MOORE AND ASSOCIATES INC  
WESTCHESTER FIRE INSURANCE  
WESTSIDE WELDING INC  
WILKINSON PENDERGRAS & BEARD LP  
ZTEX CONSTRUCTION



# CIP Benefits







An aerial photograph of a city, likely Phoenix, Arizona, with a dense urban landscape and mountains in the background. The text "Thank You" is overlaid in a large, white, sans-serif font across the center of the image. The city features a mix of low-rise residential buildings and taller commercial structures, including a prominent dark skyscraper with "WELLS FARGO" signage. A large, light-colored, circular structure, possibly a stadium or arena, is visible in the middle ground. The foreground shows a parking lot filled with cars and some trees. The background is dominated by a range of mountains under a hazy sky.

Thank You