



Recommendation/Public Input

- **Planning Division recommendation:** Approval
- **CPC Vote:** Approval Recommendation (5-0)
- **Public Input:** The Planning Division has not received any phone calls or letters in support or opposition to the detailed site development plan. Notices are not required as per Section 20.04.520 Notice.

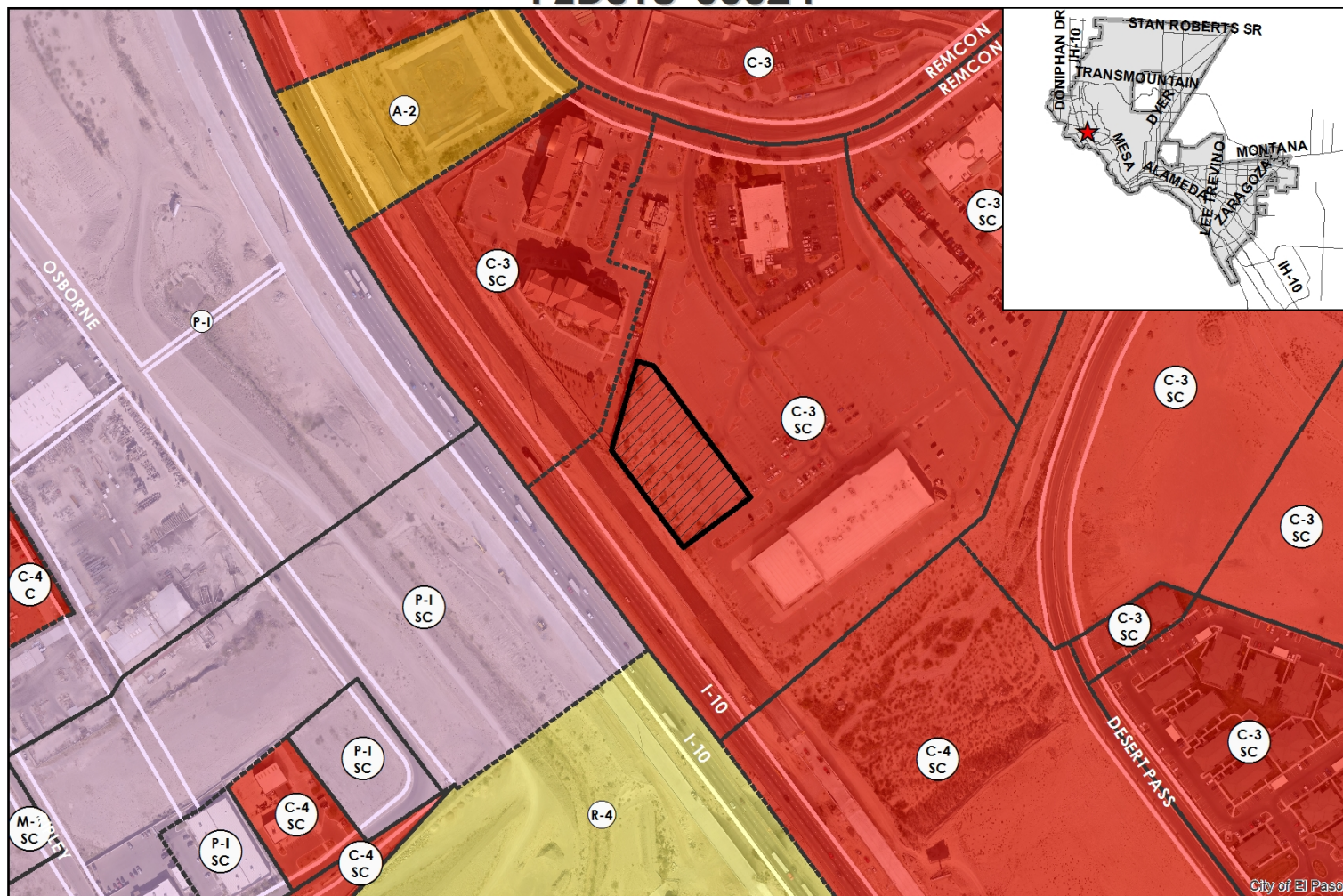
Strategic Goal #3 Promote the Visual Image of El Paso

3.1 Provide business friendly permitting and inspection processes

3.2 Improve the visual impression of the community




PZDS18-00024



This map is designed for illustrative purposes only. The features depicted here are approximate and more site-specific studies may be required to draw accurate conclusions. Enlargements of this map to scales greater than its original can induce errors and may lead to misinterpretations of the data. The Planning & Inspections Department Planning Division makes no claim to its accuracy or completeness.



 Subject Property

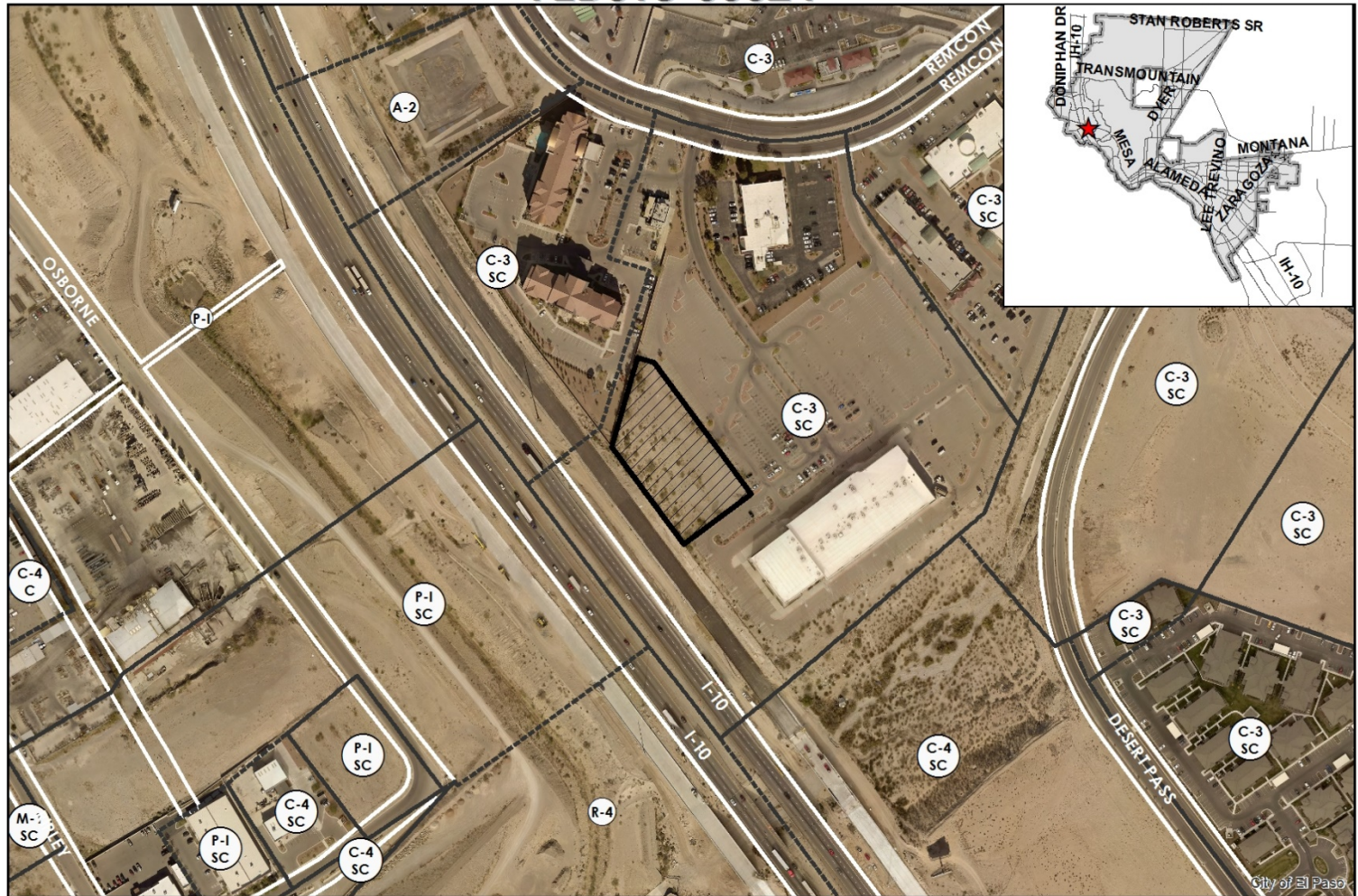
0 125 250 500 750 1,000 Feet



"Delivering Outstanding Services"



PZDS18-00024



This map is designed for illustrative purposes only. The features depicted here are approximate and more site-specific studies may be required to draw accurate conclusions. Enlargements of this map to scales greater than its original can induce errors and may lead to misinterpretations of the data. The Planning & Inspections Department Planning Division makes no claim to its accuracy or completeness.

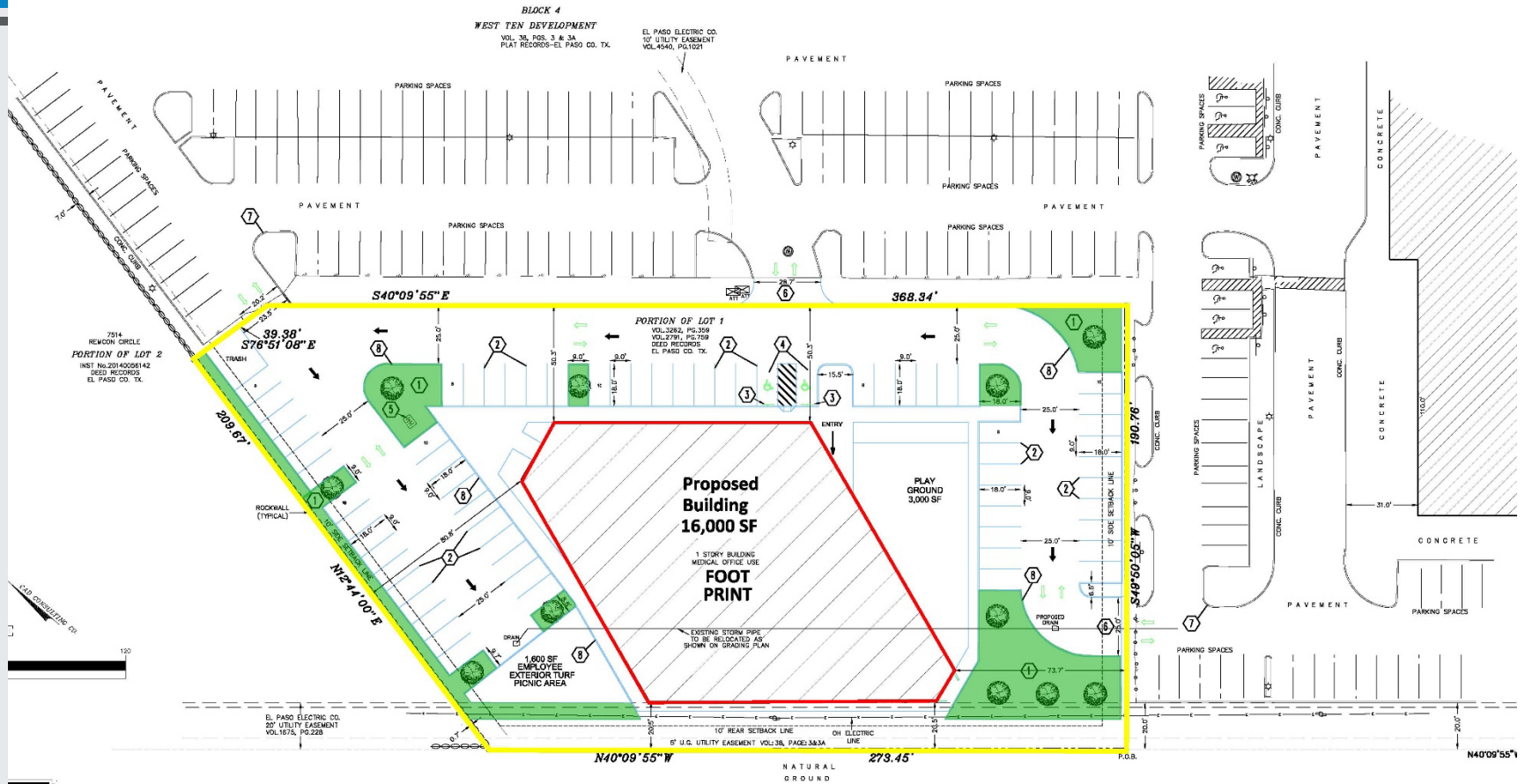


 Subject Property

0 125 250 500 750 1,000 Feet



"Delivering Outstanding Services"



NOTES CORRESPONDING TO SCHEDULE BE ITEMS:

1. A 5 foot utility easement along the Southeasterly and Southwesterly property lines as shown on plat, including easements for the overhang of service wires for pole type utilities and buried service wires, conduits, and pipes for underground utilities as dedicated on the plat, recorded in Volume 38, Pages 3 and 3A, Plat Records of El Paso County, Texas. (effects as shown)

2. Easement to EL PASO ELECTRIC COMPANY, recorded in Volume 1675, Page 228 and Volume 1675, Page 1071. Plat Records of El Paso County, Texas. (effects as shown)

STANDARDS AS

GATEWAY WEST BLVD.
INTERSTATE HWY 10

"Delivering Outstanding Services"



PZDS18-00024



This map is designed for illustrative purposes only. The features depicted here are approximations and more detailed studies may be required to draw accurate conclusions. Enlargements of this map to scales greater than its original contain errors and may lead to misinterpretations of the data. The Planning & Inspection Department Planning Division makes no claim to its accuracy or completeness.



0 30 60 120 180 240 Feet



"Delivering Outstanding Services"



P7DS18-00024



ing Services”



“Delivering Outstanding Services”