

CITY OF EL PASO, TEXAS
AGENDA ITEM DEPARTMENT HEAD'S SUMMARY FORM

DEPARTMENT: International Bridges Department

AGENDA DATE: January 10, 2017

CONTACT PERSON/PHONE: Mathew McElroy, (915) 533-7428,
McElroyMX@elpasotexas.gov

DISTRICT(S) AFFECTED: All Districts

SUBJECT:

An update on the International Bridges Department's operations and review and discussion on the quarterly report for the reimbursable services agreement authorized under Section 560 which allows the City to pay for Customs and Border Protection overtime in an effort to reduce wait times at City owned ports of entry and staff all lanes during peak hours.

BACKGROUND/DISCUSSION:

City Council, on December 3, 2013, authorized the Section 560 "P3" reimbursable fee agreement and annex allowing the City to reimburse the U.S. Customs and Border Protection (CBP) for overtime provided by CBP officers to reduce wait times at the Paso Del Norte (Santa Fe) and Ysleta (Zaragoza) Bridges during peak times and holidays. This report will provide the City Council with an update on the progress, current impacts, and future application of the P3 program as well as a progress report on the current operations of the International Bridges Department.

PRIOR COUNCIL ACTION:

December 3, 2013 – City Council approval of the Section 560 "P3" reimbursable fee agreement with CBP

September 23, 2014 – City Council approval of the first extension

September 22, 2015 – City Council approval of the second extension

July 12, 2016 – City Council approval of the third extension

AMOUNT AND SOURCE OF FUNDING:

Funding Source – Section 560 "P3" Reimbursable Fee Agreement
(International Bridges Restricted – 520010-564-3360-64870)

*****REQUIRED AUTHORIZATION*****

LEGAL: (if required)

FINANCE: (if required)

DEPARTMENT HEAD: Mathew S. McElroy
International Bridges Department Director

APPROVED FOR AGENDA:

CITY MANAGER: _____

DATE: _____



Section 560 Annex (P3 Program) Progress Report

January 2017

Strategic Goal # 1 – Create an Environment Conducive to
Strong, Sustainable Economic Development

1.5. Stimulate Economic Growth Through Transit Integration,
Cross Border Mobility, Trade and Tourism



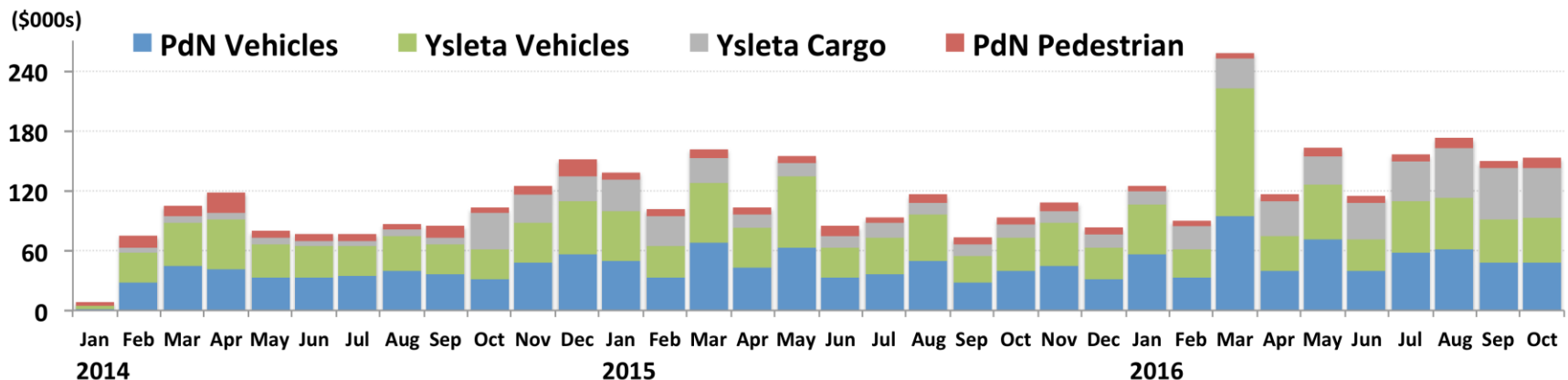
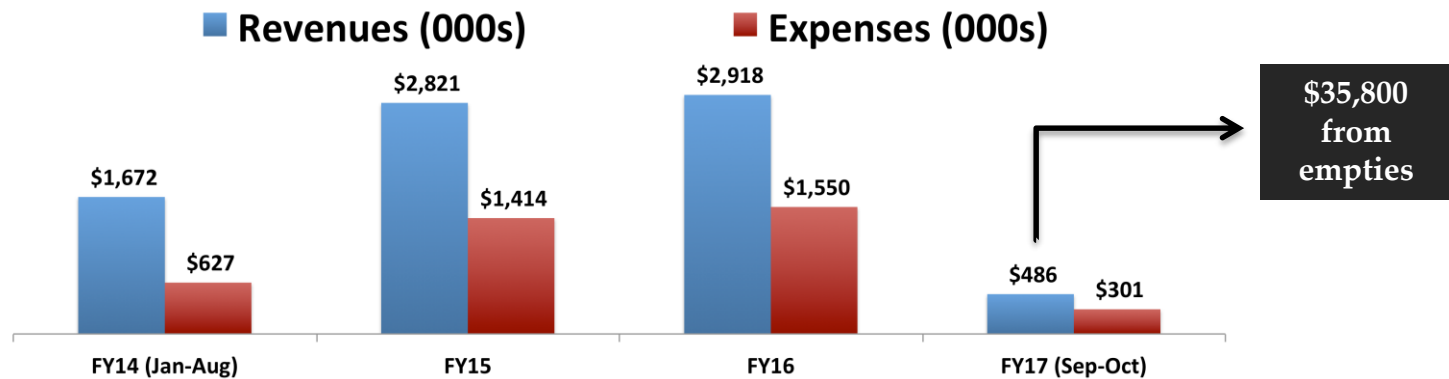
Presentation Outline

- P3 Revenues, Expenses & Coverage
- CBP Crossings & Wait Times
- Segmented Cargo Wait Times
- Parking Sites & Meters
- Metropia Bridges App & Website
- Infrastructure Projects
- Bridges Steering Committee



P3 Revenues and Expenses

- City funds CBP overtime to staff all lanes during peak hours
- Paid by increase in tolls – vehicles 50¢ and 50¢ per cargo axle





P3 Coverage

- All Lanes Open Initiative
- previous P3 hours (start 01/26/14)
- additional P3 hours (start 07/21/16)

Number of P3 lanes funded inside cells

		a.m.											p.m.												
		12	1	2	3	4	5	6	7	8	9	10	11	12	1	2	3	4	5	6	7	8	9	10	11
PdN Pedestrians																									
Monday												2	2	2	2										
PdN Vehicles																									
Monday						4																			
Friday																	6	6							
Saturday																6	6	6	6				6	6	
Sunday																							6	6	
Ysleta Vehicles																									
Friday																	6	6							
Saturday																6	6	6	6				6	6	
Sunday																							6	6	
Ysleta Cargo																									
Monday												1	1	1	1										
Tuesday												1	1	1	1										
Wednesday												1	1	1	1										
Thursday												1	1	1	1			2	2	2	2	2	2		
Friday												1	1	1	1			2	2	2	2	2	2		
Saturday												1	1	1	1										

Source: IBD

Note: 07/21/16 new P3 hours included Sunday 12 to 2 a.m., but on 11/11/16 these two hours were shifted to Friday 4 to 6 p.m. due to staffing shortages and greater need at this day/time slot.



CBP Crossings & Line of Sight Wait Times



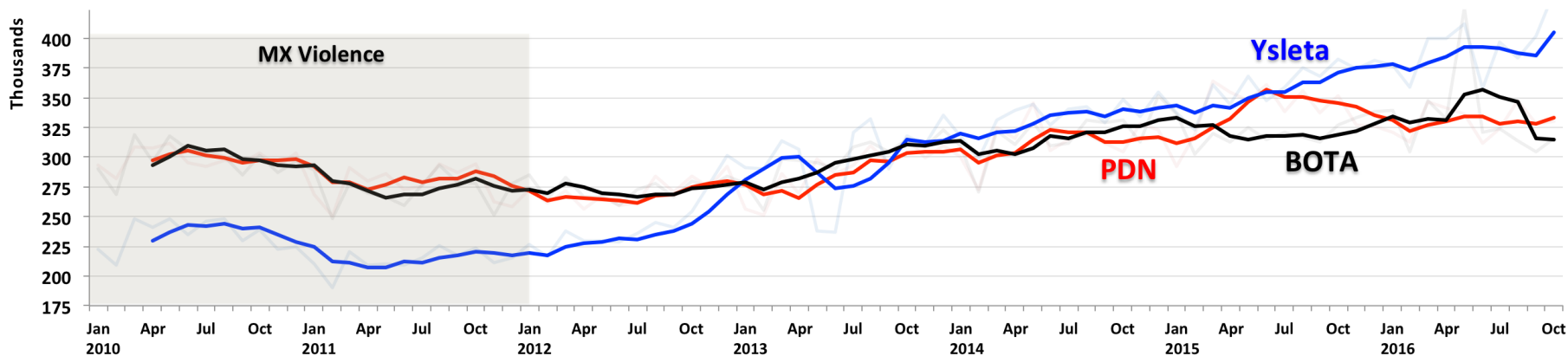
Vehicle Crossings

Year-to-date January thru November

	2006	2007	2008	2009	2010	2011	2012	2013	2014	2015	2016
Vehicles (millions)	13.033	11.680	11.590	8.936	8.342	7.671	7.758	8.758	9.591	10.177	10.559
% change	-1.7%	-10.4%	-0.8%	-22.9%	-6.6%	-8.0%	1.1%	12.9%	9.5%	6.1%	3.8%

Positive growth since 2012

Monthly crossings – Ysleta capturing more traffic

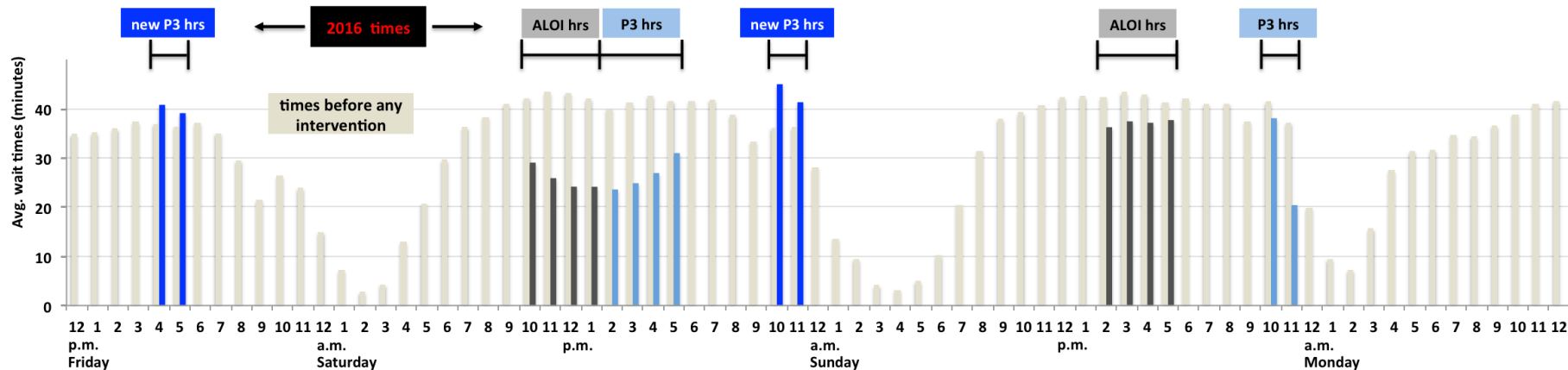




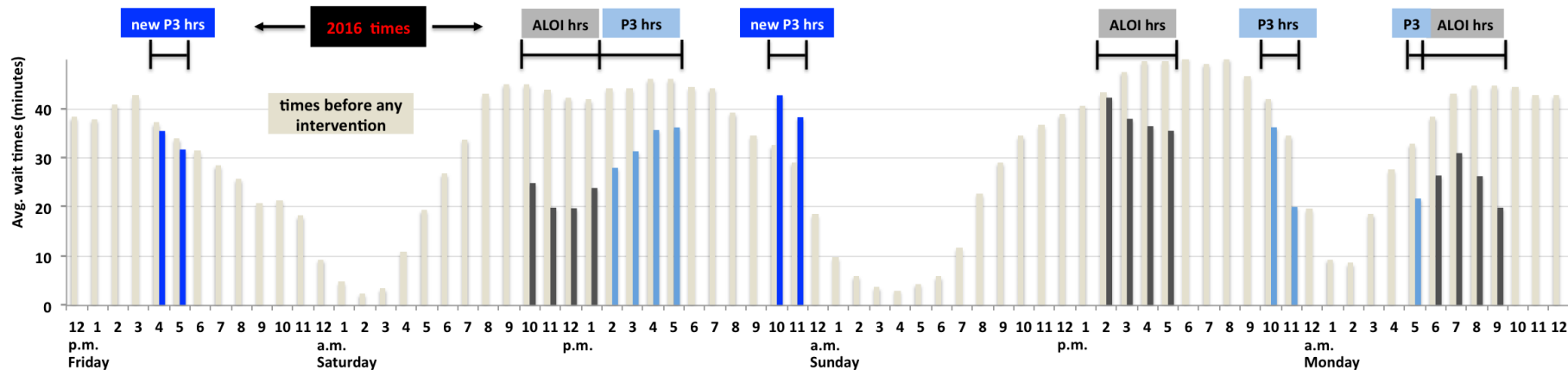
Vehicle Avg. Wait Times by Hour

Avg. times 2016

Ysleta



PDN





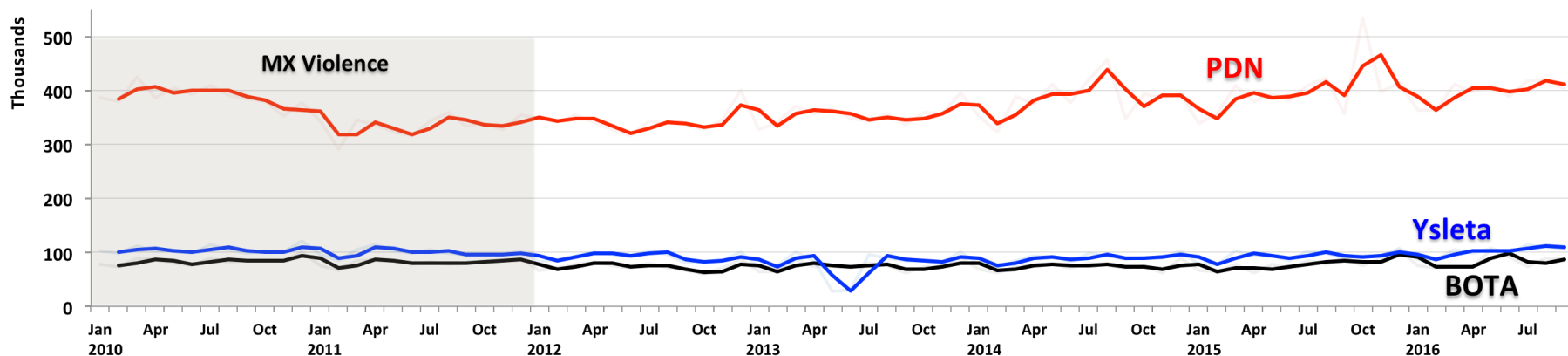
Pedestrian Crossings

Year-to-date January thru November

	2006	2007	2008	2009	2010	2011	2012	2013	2014	2015	2016
Pedestrians (millions)	6.038	6.855	6.630	6.239	5.798	5.117	5.006	4.974	5.450	5.643	5.848
% change	-3.2%	13.5%	-3.3%	-5.9%	-7.1%	-11.7%	-2.2%	-0.6%	9.6%	3.5%	3.6%

Positive growth since 2014

Monthly Crossings – PDN captures 68% of traffic on average

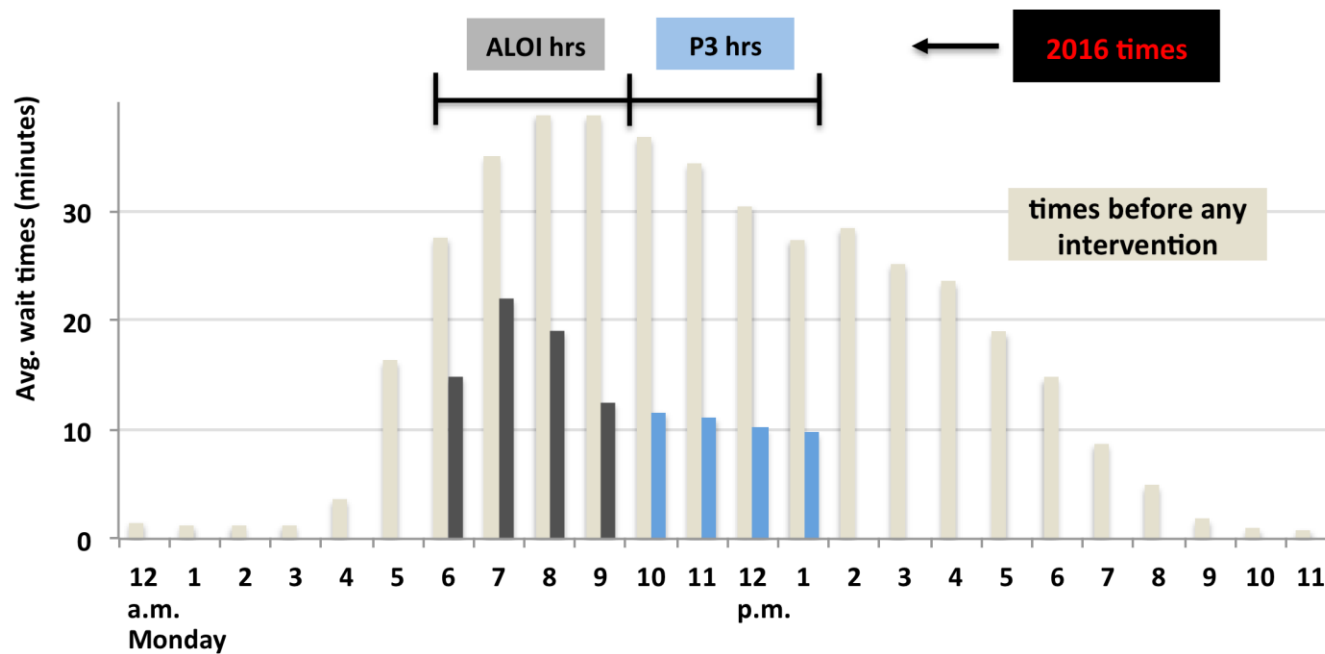




Pedestrian Avg. Wait Times by Hour

PDN

Avg. times 2016





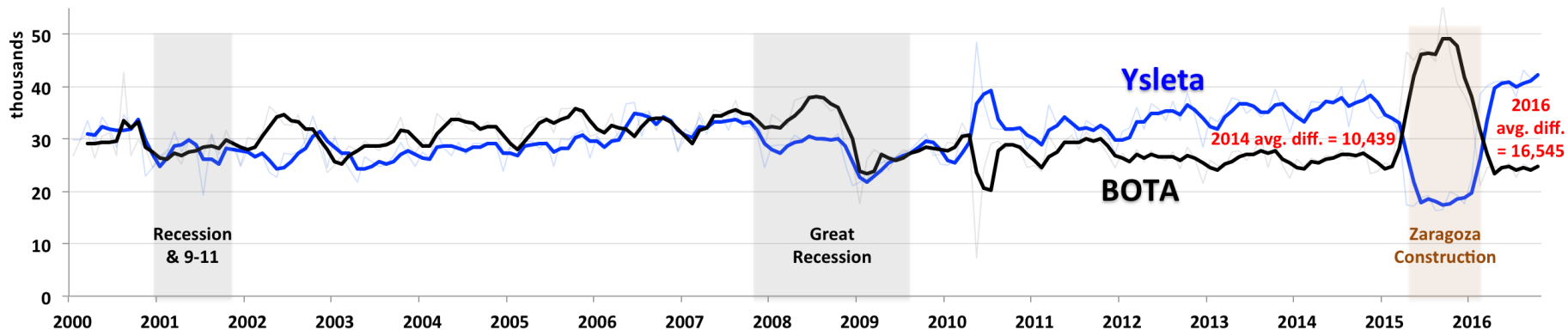
Cargo Crossings

Year-to-date January thru November

	2006	2007	2008	2009	2010	2011	2012	2013	2014	2015	2016
Trucks (thousands)	652.7	664.6	658.5	525.9	595.5	607.8	613.8	625.4	634.6	642.3	641.3
% change	5.6%	1.8%	-0.9%	-20.1%	13.2%	2.1%	1.0%	1.9%	1.5%	1.2%	-0.1%

Cargo crossings close to 2007 all-time high levels

Monthly crossings – Ysleta capturing more & more traffic

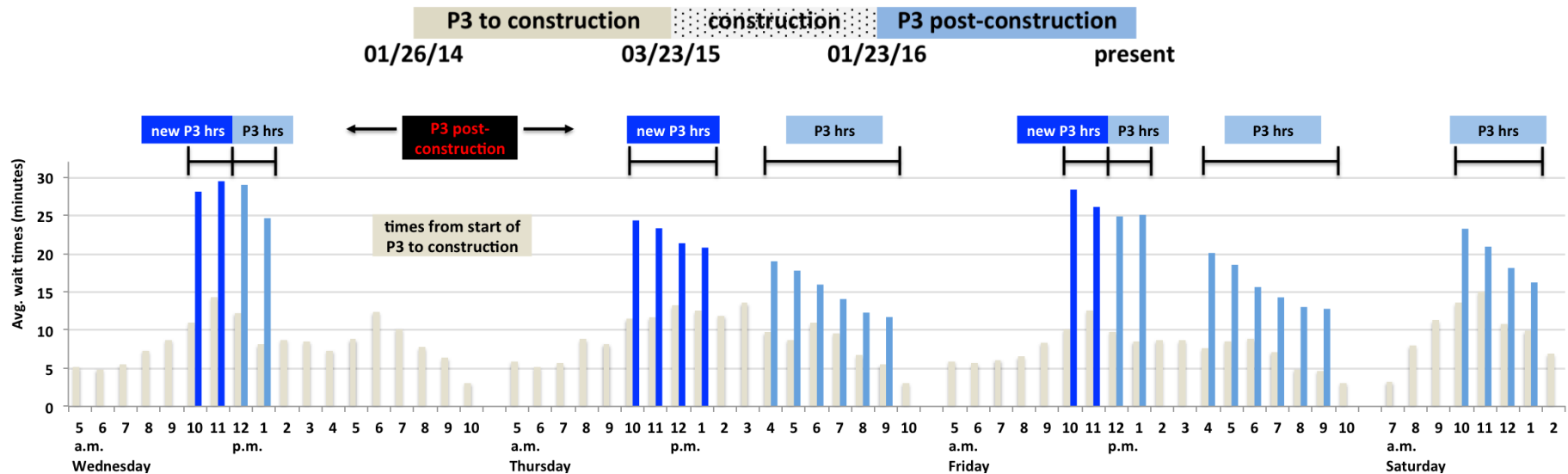




Cargo Avg. Wait Times by Hour

Ysleta

P3 after construction





Wait Times vs. Crossings

All operational hours not just P3 times

Period	Ysleta Bridge				PDN Bridge			
	Cargo Trucks		Vehicles (non-DCL)		Pedestrians		Vehicles (non-DCL)	
	Avg. Wait Times (minutes)	Total Crossings (000s)	Avg. Wait Times (minutes)	Total Crossings (000s)	Avg. Wait Times (minutes)	Total Crossings (000s)	Avg. Wait Times (minutes)	Total Crossings (000s)
Sep. to Nov. 2015	8.0	55.5	22.7	889.7	5.4	1,288.3	21.4	707.0
Sep. to Nov. 2016	18.4	125.9	25.4	956.6	9.1	1,209.2	26.6	677.7
year-over-year % change	129.4%	126.8%	12.0%	7.5%	69.4%	-6.1%	24.2%	-4.1%

↓

Increase in times driven by post-construction increase in crossings

↓

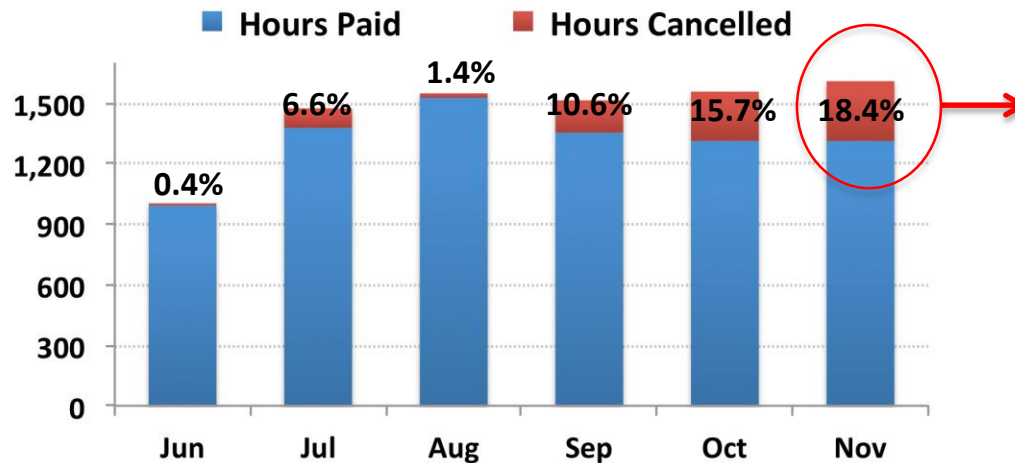
Increase in times driven by increase in crossings, immigration influx, & staff shortages

└──┐

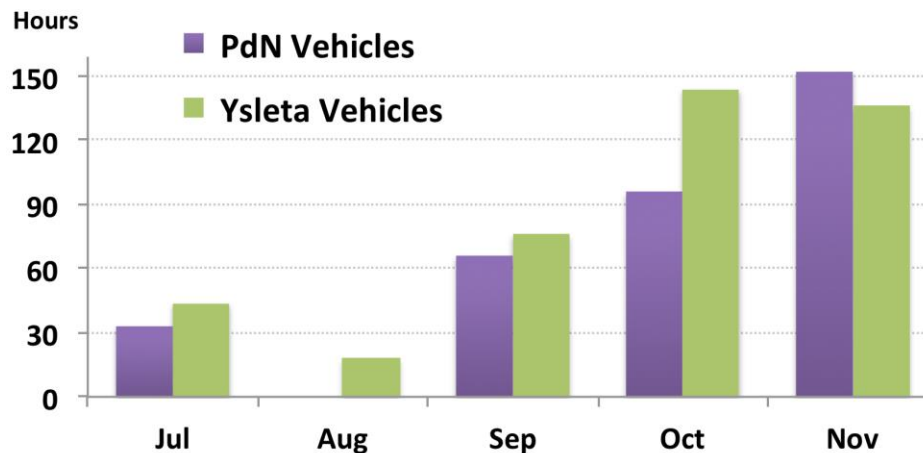
Increase in times driven by immigration influx & staff shortages



P3 Staff Shortages



18.4 % of contracted hours were cancelled in November



Most hours cancelled were for vehicle crossings



GPS Segmented Cargo Wait Times

**Aduanas
Inspection**

**Ysleta –
Zaragoza
Bridge
Geofences**

CBP

Queue

Aduana

CBP

**Aduana
Queue**

**CBP
Inspection**

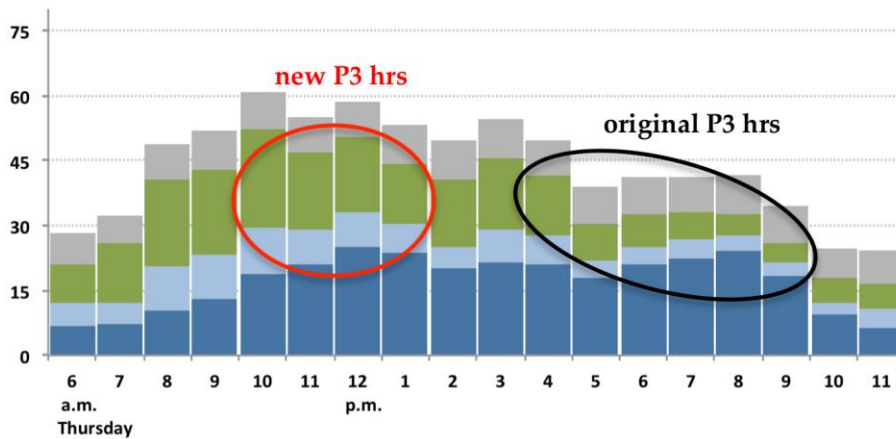


Ysleta Standard Cargo Wait Times

Thursday & Friday
Sep-Oct-Nov 2016

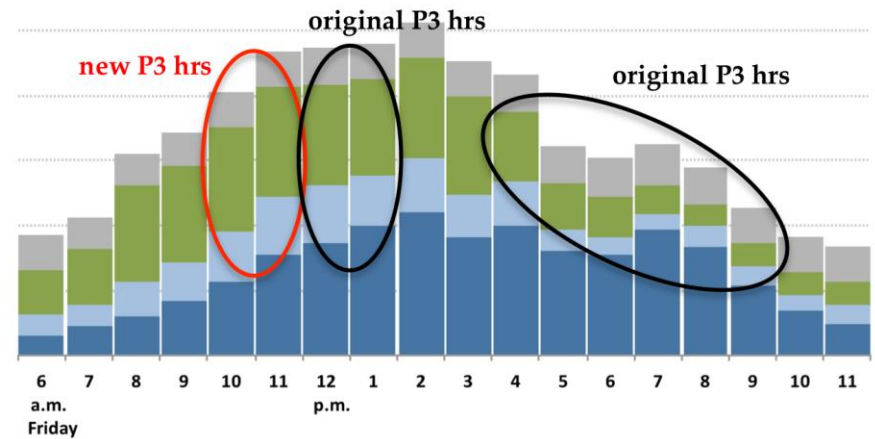
■ Aduana Queue ■ Aduana ■ CBP Queue ■ CBP

Avg. times (minutes)



Trying to reduce
Thursday
afternoon peak

Successfully
holding down late
afternoon times



Trying to reduce front
end of the Friday
afternoon peak



Parking Sites and Meters

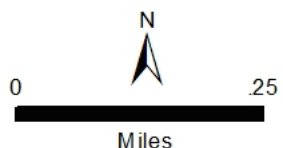


Parking Sites and Meters

- Total of 1,994 parking meters installed citywide (Nov. 2016)
 - Recently completed a full inventory of all city-controlled parking meters and spaces city-wide (geocoded)
 - 406 parking sensors currently installed
 - Second parking sensor installation wave currently underway (required for event pricing district implementation)
- Completed downtown parking sites study (Nov. 2016)
- Currently working on public outreach plan and code amendment required for City Council adoption of event pricing district



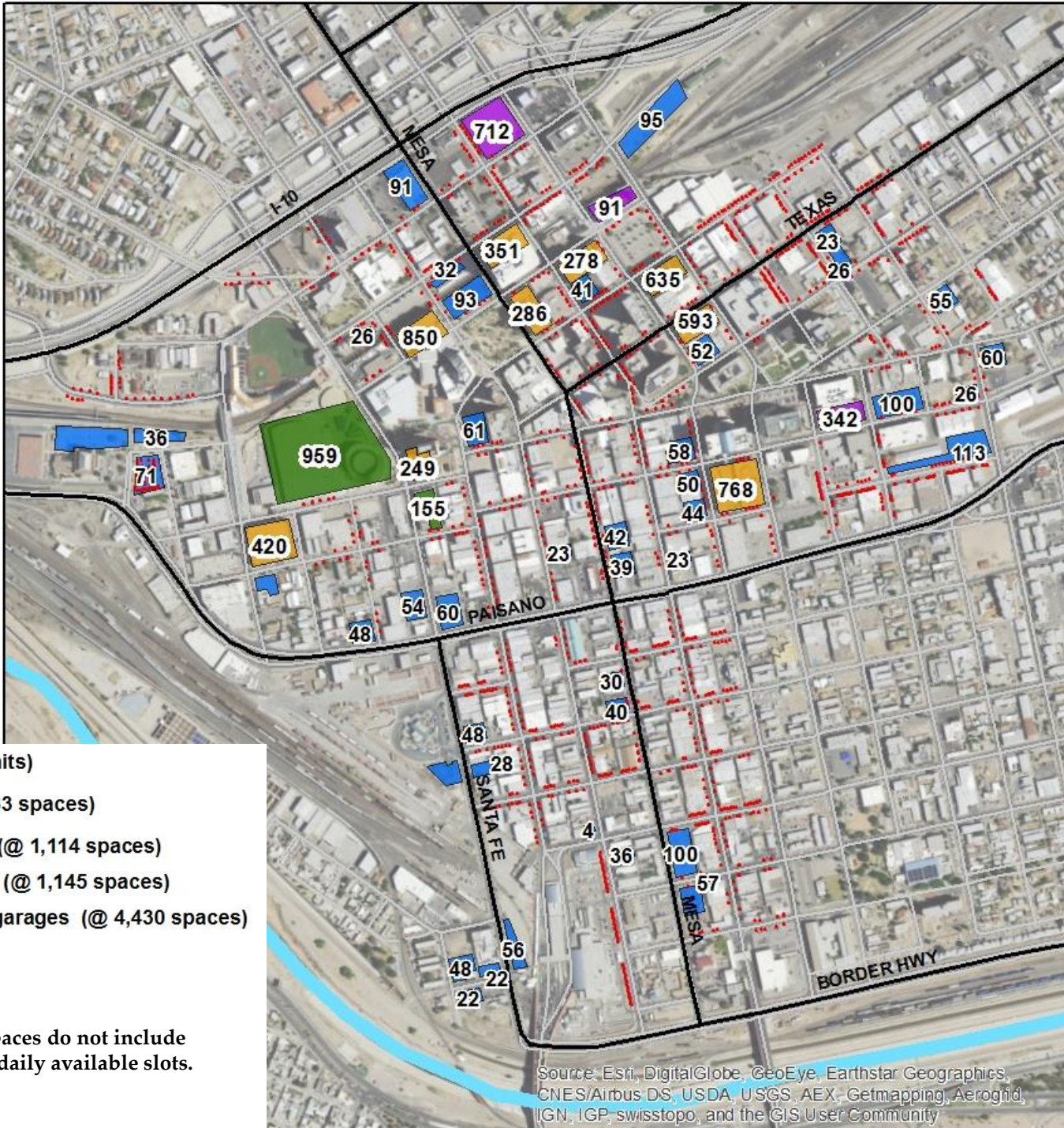
Parking Sites



- Meters (1,994 current units)
- Public parking lots (1,933 spaces)
- Public parking garages (@ 1,114 spaces)
- Private parking garages (@ 1,145 spaces)
- Private / public parking garages (@ 4,430 spaces)

Source: IBD (Nov. 2016)

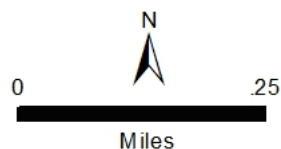
Note: Number of parking lot spaces do not include monthly or reserved slots, only daily available slots.



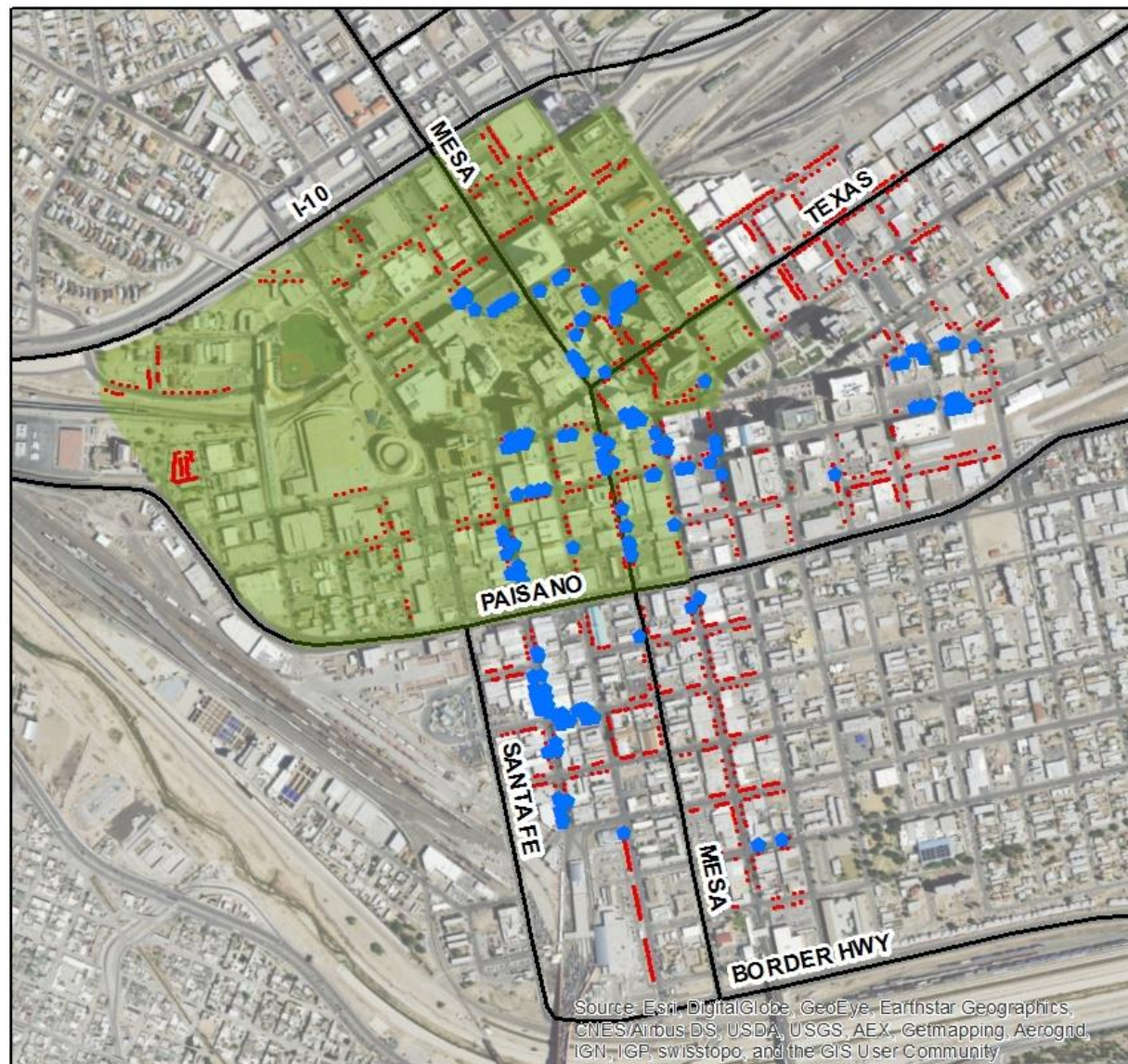
Source: Esri, DigitalGlobe, GeoEye, Earthstar Geographics, CNES/Airbus DS, USDA, USGS, AEX, Getmapping, Aerogrid, IGN, IGP, swisstopo, and the GIS User Community



Meter Revenue Sources – Top Decile



- Meters (1,994 current units)
- 2016 revenue - top 10% meters
- Proposed event pricing district



Source: IBD

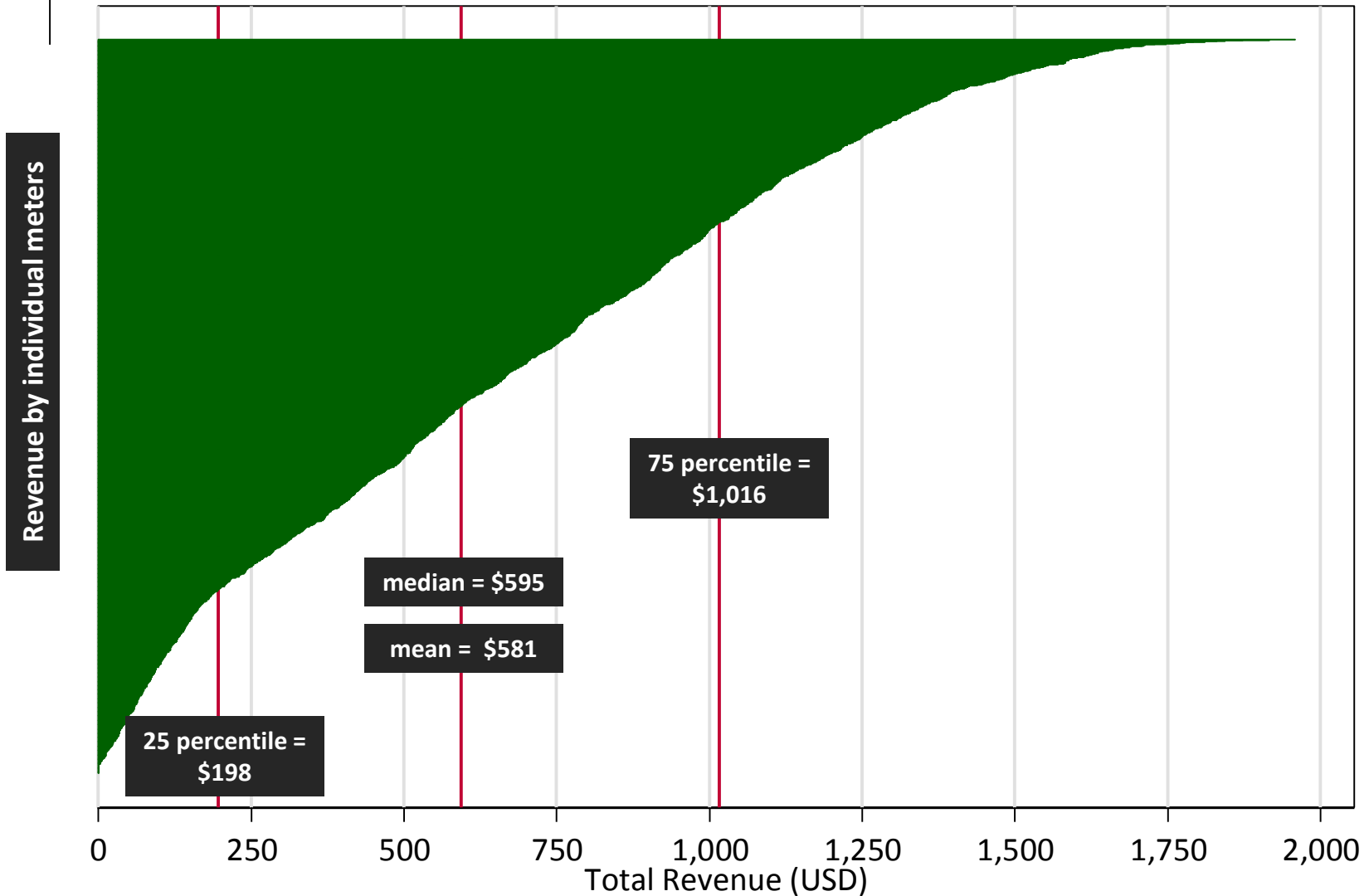
Note: 200 meters comprise top decile
(10 are located around UTEP area)

Source: Esri, DigitalGlobe, GeoEye, Earthstar Geographics, CNES/Airbus DS, USDA, USGS, AEX, Getmapping, Aerogrid, IGN, IGP, swisstopo, and the GIS User Community



Distribution of Meter Revenue

Total Revenue (Jan. thru Nov. 2016) = \$1.157 million

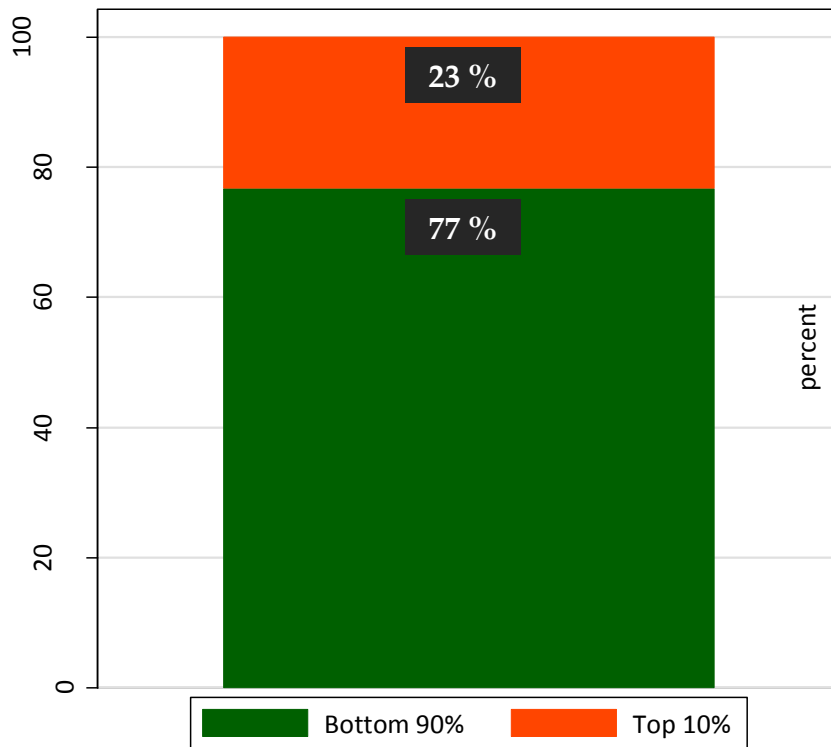


Source: IBD

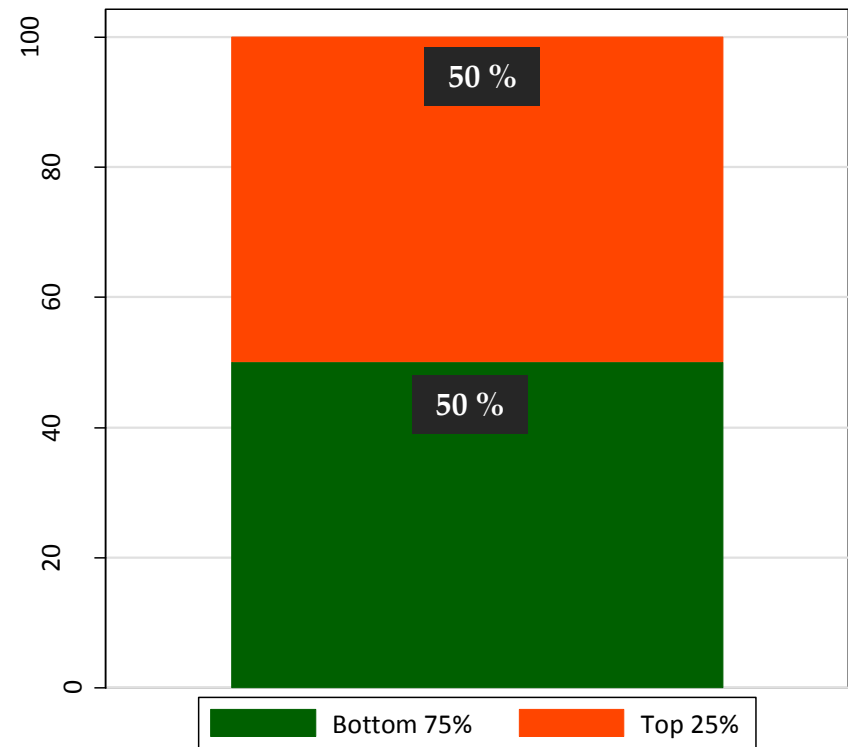


Contribution of Meter Revenue (Jan.-Nov. 2016)

**Top 10% meters (n = 200) account for
23% of revenue**



**Top 25% meters (n = 498) account for
50% of revenue**





Metropia Bridges App & Website



Metropia Bridges App

- Kick-off meeting held in September 2016
- Completed integration of regional POE system and Cd. Juarez road network w/ Metropia's traffic model
- Completed north/southbound bridge crossing segments (geofences) for all modes & bridges
- IBD staff now has full access to Metropia's Periscope Dashboard system
- Currently planning alpha testing phase of the project
- March 2017 scheduled launch





Bridges Websites

- Consulting agreement finalized & development underway
 - Bilingual content managed by members of Bridges Steering Committee
 - 5-6 month completion timeline
- Static content:
 - Basic crossing & bridge info
 - Links, resources, reports, on-going projects
- Real-time content:
 - Live bridge conditions
 - Closures & accidents
 - Alerts & wait times
- Website Features:
 - Responsive design optimized for any screen size
 - Social media integration
 - Metropia dashboards
 - SMS text messaging to push emergency info



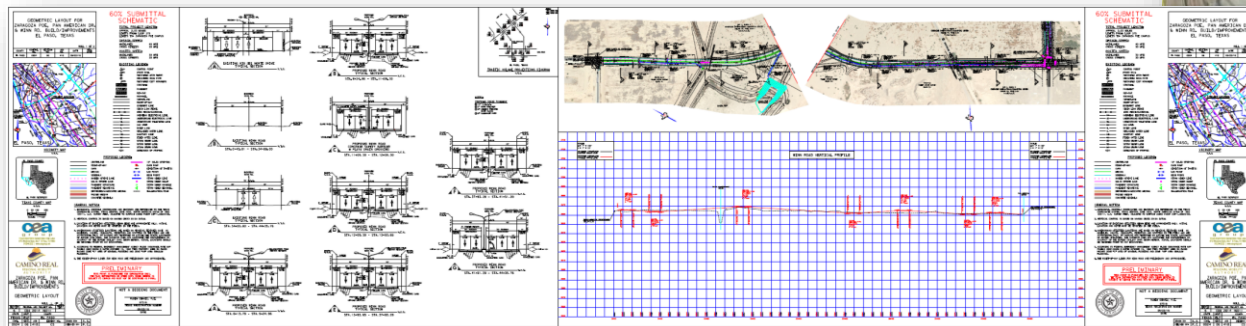
Infrastructure Projects



Infrastructure Projects

- **Ysleta-Zaragoza Median Removal**
 - Design 100% complete
 - GSA construction license pending (approx. 33 days from January)
 - Construction scheduled to start in April, 2017
 - Six month construction project

- **Winn Road / Pan American**
 - Design 90% complete
 - Contractor Procurement planned for August, 2018
 - Construction scheduled to start in January, 2019
 - Open to traffic planned by December, 2020



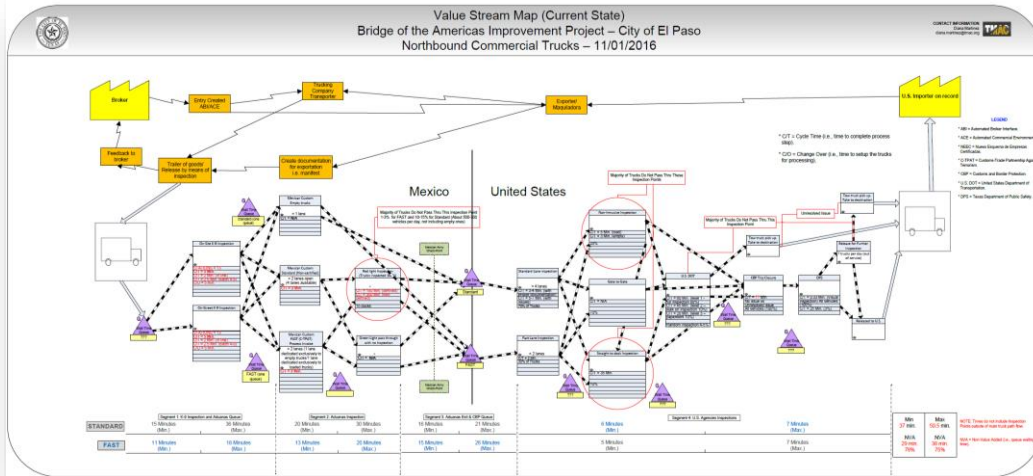


Bridges Steering Committee



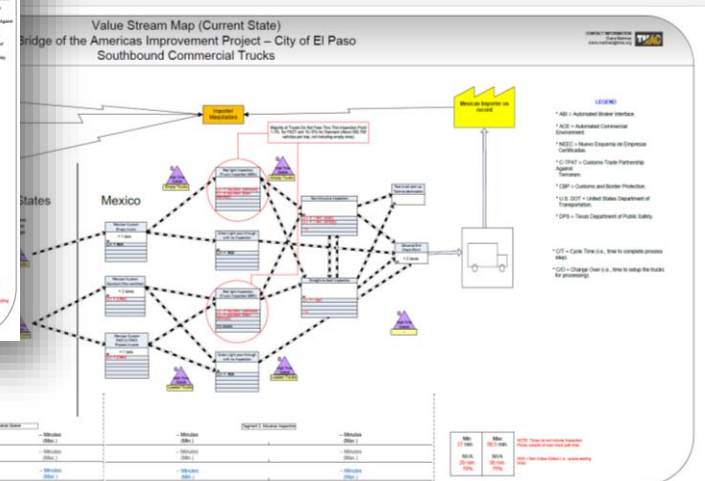
BOTA VSM Work Session

- Two day event – Nov. 2-3, 2016
- Day 1: Northbound and southbound cargo traffic inspection facilities visit and value stream mapping work session
- Day 2: Potential improvement projects and areas of opportunities session
- Participants: City of El Paso, CBP, U.S. DOT, DPS, Mexican Aduanas, INDEX, Transportistas, Municipio de Juarez, TxDOT, MPO, IMIP and Borderplex Alliance, among several others



Southbound VSM

Northbound VSM





BOTA VSM Work Session

- More than 30 areas of opportunities and potential bridge improvement projects identified
- Several are eligible for GSA's Section 559 Donations Acceptance Program
 - Additional second lane for southbound traffic (existing canopy creates bottleneck)
 - Cargo trucks right turn off bridge prior to CBP primary inspection booths – sharp turn restricts access and creates lane blocking
 - Lane assignment, striping, signage, ITS, etc.





Section 560 Annex (P3 Program) Progress Report

January 2017

Strategic Goal # 1 – Create an Environment Conducive to
Strong, Sustainable Economic Development

1.5. Stimulate Economic Growth Through Transit Integration,
Cross Border Mobility, Trade and Tourism