



Eastside Regional Park



Eastside Sports Complex



February 5, 2019

The logo features a large, bold, dark grey number '20'. The '0' is a solid circle containing the words 'IN' and '2020' in a smaller, orange, sans-serif font. A vertical line separates this logo from the text to its right.

POWER IN THE VISION

Goal 4: Enhance El Paso's Quality of Life through recreational, cultural, and educational environments

Initiative 11

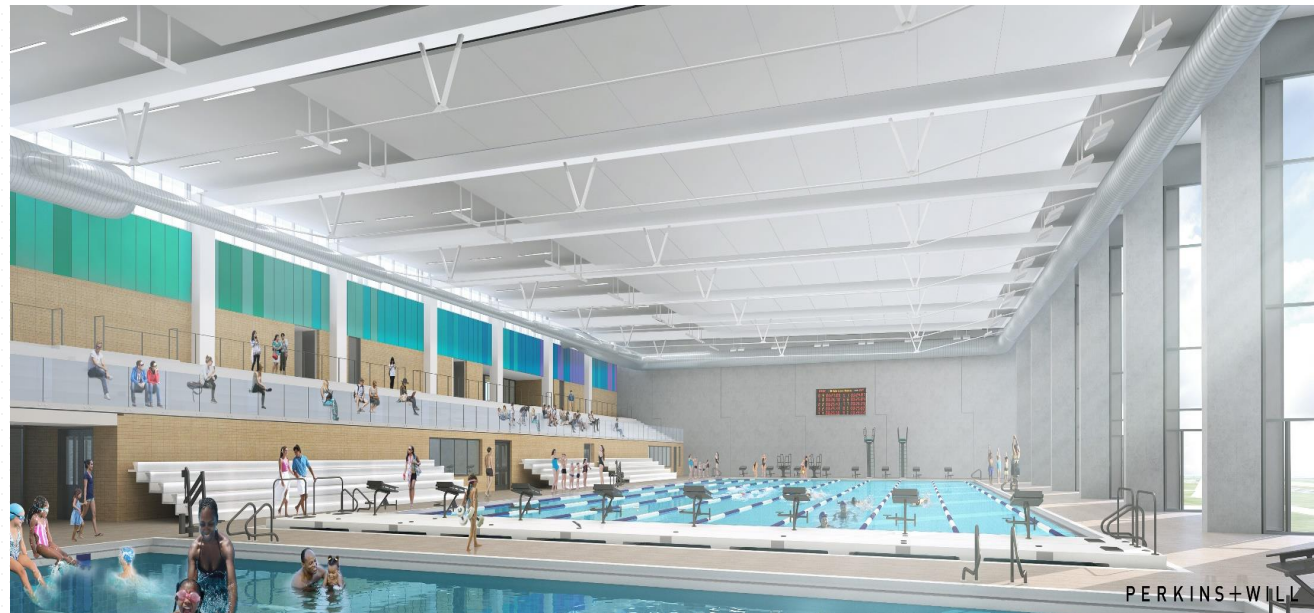
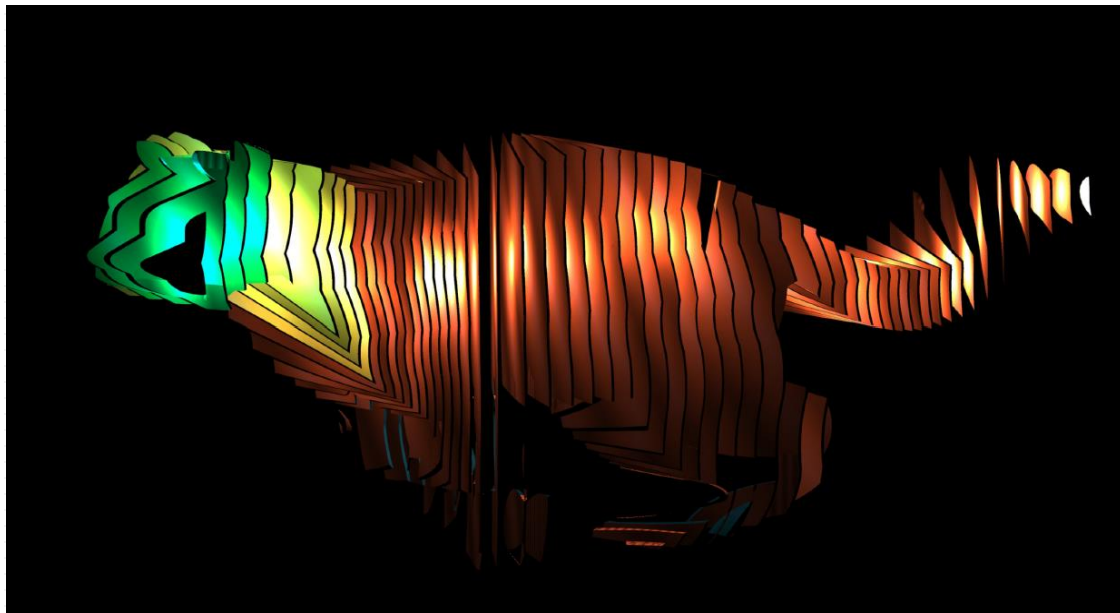
Construct Sun City Lights entryways

Initiative 12

Realize Aquatic Plan

Initiative 13

Deliver Programmed Quality of Life Bond Projects



Eastside Regional Park

Phase I completion

Spring 2020



Phase I in construction

4

Location:

13501 Jason Crandall, El Paso Texas 79938

District:

5

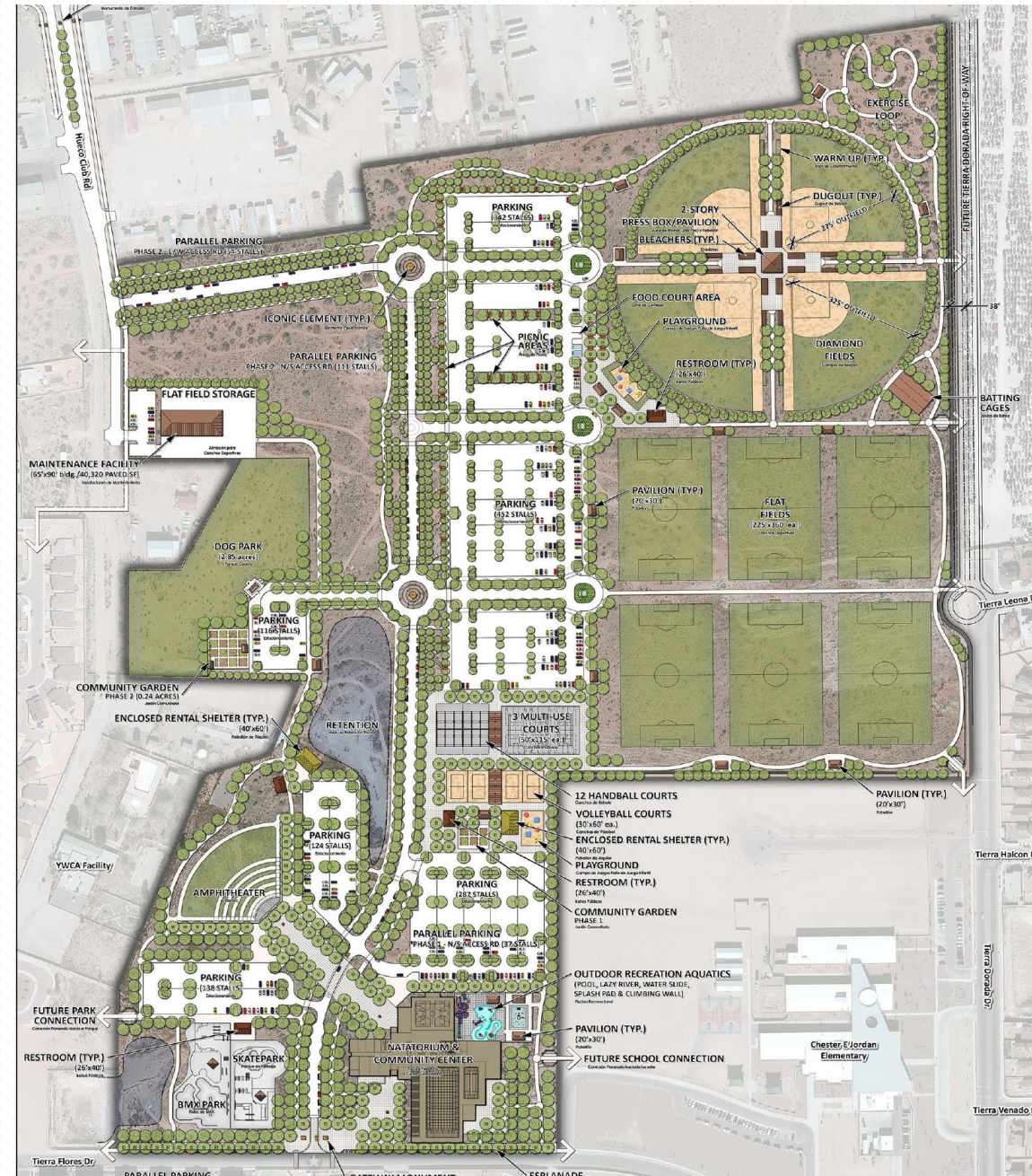
Total Budget:

\$59,576,000

Funding Source:

2012 Quality of Life Bond
2017 Capital Plan

Master Plan



Eastside Regional Park, Phase I

Phase I includes the development of 10.6 acres and will provide **Three first-class signature investments** that include:



An indoor natatorium



A multi-generational community center



A themed outdoor neighborhood water park

Other improvements include parking, entrance plaza, walking path, landscaping, and public art.

Natatorium



Eastside Regional Park, Phase I

Amenities:

- 50-meter competition quality pool
- Diving well with 1 and 3 meter diving boards
- Pool deck space for 400 competitors
- Spectator seating for 800
- Warm-up/cool down pool
- Office space
- First aid lifeguard room
- Training room
- Lockers and restrooms

Community Center



Lobby Interior



Eastside Regional Park, Phase I

Amenities:

- Gymnasium with HS basketball and half-size courts
- Volleyball within the gymnasium
- Spectator seating for 124
- Multi-purpose classrooms
- Game rooms
- Catering kitchen

- Dining area with bingo stage
- Library and reading room
- Computer center
- Fitness/weights area
- Indoor running track
- Cater to families and people of all ages

Oasis Water Park



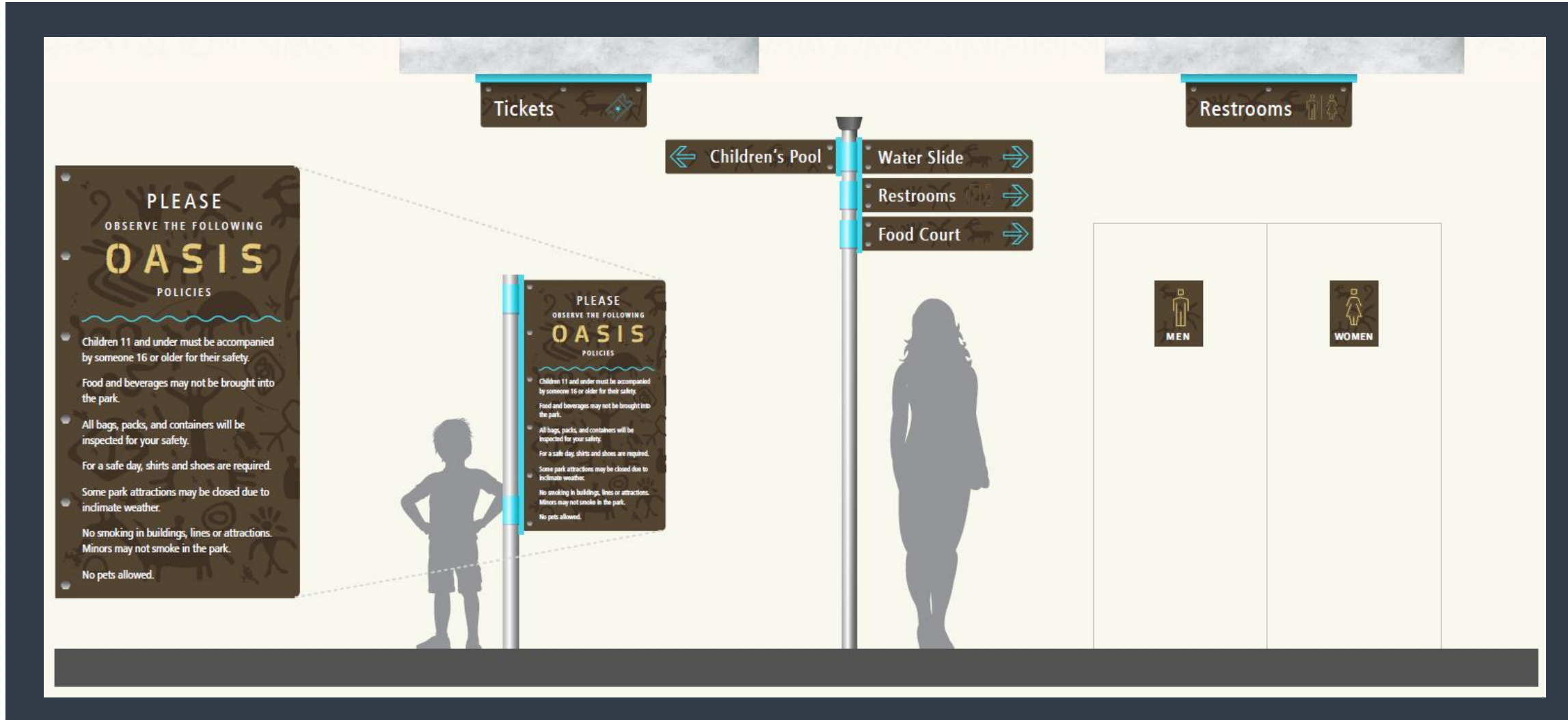
Eastside Regional Park, Phase I

Amenities:

- Outdoor family pool with Baja deck
- Kiddie pool with play table, water jets, dumping bucket
- Water slides
- Two climbing walls
- Artificial wave surfing feature
- Lazy river
- Dressing rooms with lockers
- Lifeguard and first-aid station
- Food concession kitchen with shaded eating areas
- Music and coordinated lighting
- Shaded pavilion and seating areas
- Zero depth entry to features

Water Park – Wayfinding Design

Wayfinding Design



Eastside Regional Park – Graphic Elements

Recommended Fonts

FRUTIGER 57 CONDENSED

abcdefghijklmnopqrstuvwxy
z
ABCDEFGHIJKLMN
OPQRSTUVWXYZ
1234567890

VIDA STENCIL RANDOMIZED 33 PRO

abcdefghijklmnopqrstuvwxy
z
ABCDEFGHIJKLMN
OPQRSTUVWXYZ
1234567890

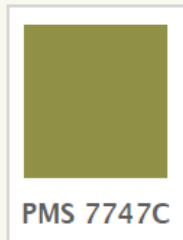
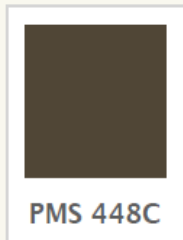
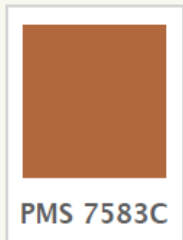
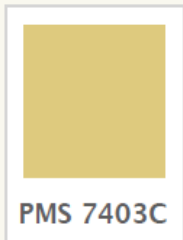
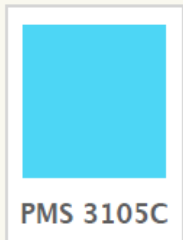
Environmental Accent Graphics

Pictograph Elements/
Pattern



Recommended Colors

Based on Pantone color system



Recommended Materials and Processes

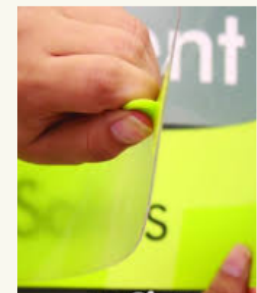
Powder Coated
Metal



Stainless Steel
Pole

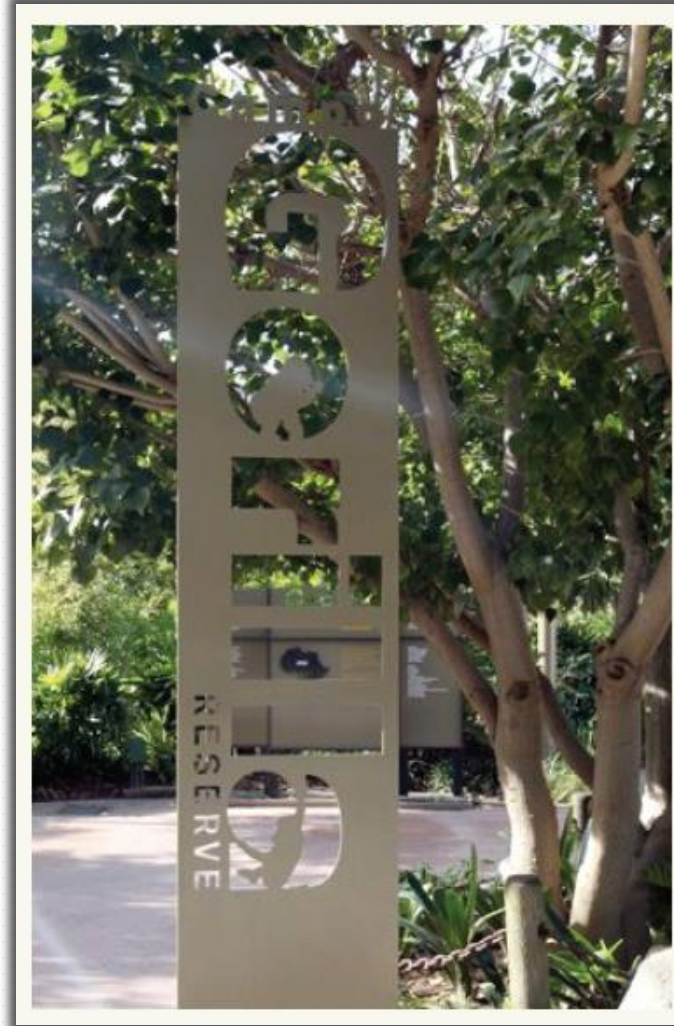


Vinyl Graphics



Eastside Regional Park – Entry Signage Concepts

Wayfinding Design



Design Consultant: Mycotoo

Phase II

Estimated completion

Fall 2020

- 2 baseball diamond fields
- Three flat fields
- Two sand volleyball courts
- One multi-use court
- Six handball courts
- Two public restrooms
- Walking path around Phase II
- Parking
- Food truck space
- Small maintenance yard

Construction Start: Fall 2019

Entrance Archway Concept

Public Art



Artists: Mark Grieve and Ilana Spector
California

Seating Boulders

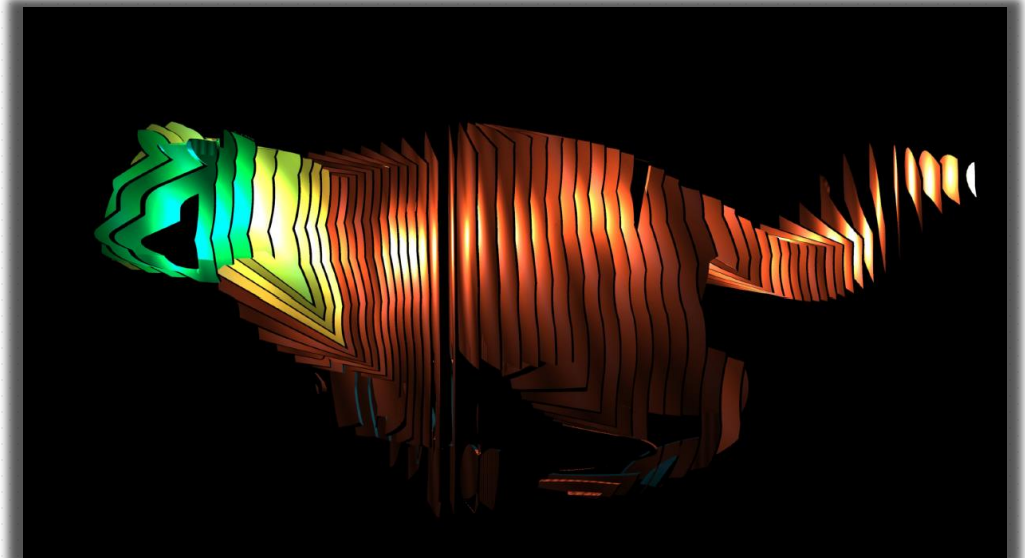
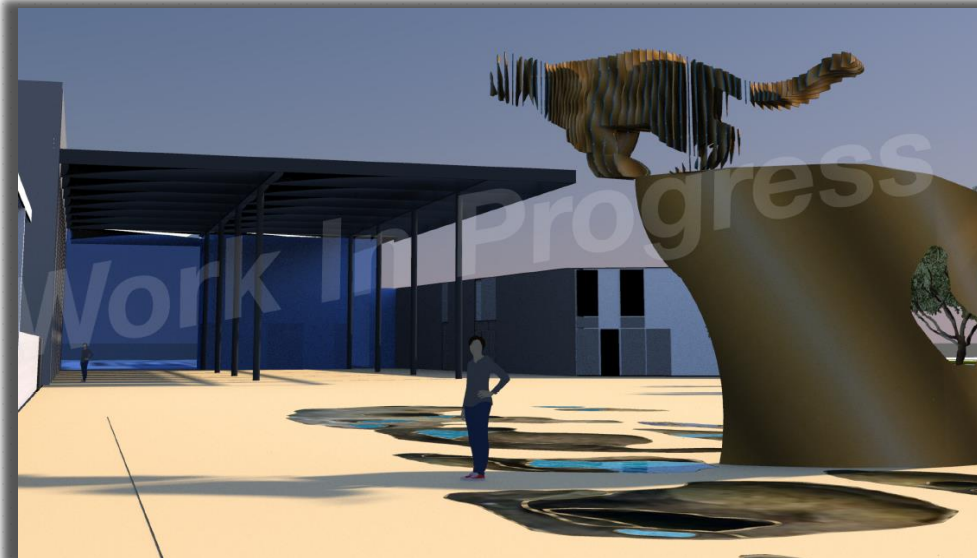
Public Art



Artists: Brad Goldberg

Sun City Lights Design Concepts

Public Art



Design Consultant: Mycotoo

Water Park Art Piece Inspiration

Public Art



Selected Artist: Olalekan Jeyifous
New York

Wayfinding



An aerial photograph of a construction site. The central focus is a large, rectangular concrete foundation. The interior of this foundation is filled with a dense grid of steel reinforcement bars (rebar). The foundation is surrounded by a network of wooden and metal formwork. To the right of the main foundation, there are several smaller, rectangular sections, also containing rebar grids. The ground around the construction area is a mix of brown earth and concrete. Various pieces of construction equipment are visible, including a green crane, a yellow excavator, and several orange forklifts. The overall scene depicts an active construction project in progress.

Construction



Eastside Sports Complex



Eastside Sports Complex

Phase I

Open to the Public



Location:

14400 Montwood Drive

District:

5

Approximate Total Budget:

\$20,000,000 (Phase I and II)

Funding Source:

2012 Quality of Life Bond
TIRZ

Eastside Sports Complex

- 8 Sodded irrigated competition flat fields
- Fencing for access control
- 1 Championship Field
- Shaded seating to accommodate 500 spectator
- Hike and Bike along exterior of park
- Paved Parking Facilities
- Interior walking paths

Fall 2020

- 4 competition fields with ponding
- 4 sodded irrigated competition flat fields
- Paved Parking Facilities
- ADA accessible restrooms
- Drinking Fountains, Benches, Trash receptacles
- Interior walking paths
- Exercise stations
- Playground with canopy at Phase I site
- Food truck area
- Design and installation of IT infrastructure and equipment

Eastside Sports Complex



From September to December 2018...

Eastside Sports Complex has had:

8,150 players

33,396 spectators (including coaches)

9 concession permits amounting to **\$2,746**

Approximately **124,638** players and spectators
are anticipated to visit the facility in **2019**

Eastside Sports Complex Fields





Thank You