



## Recommendation/Public Input

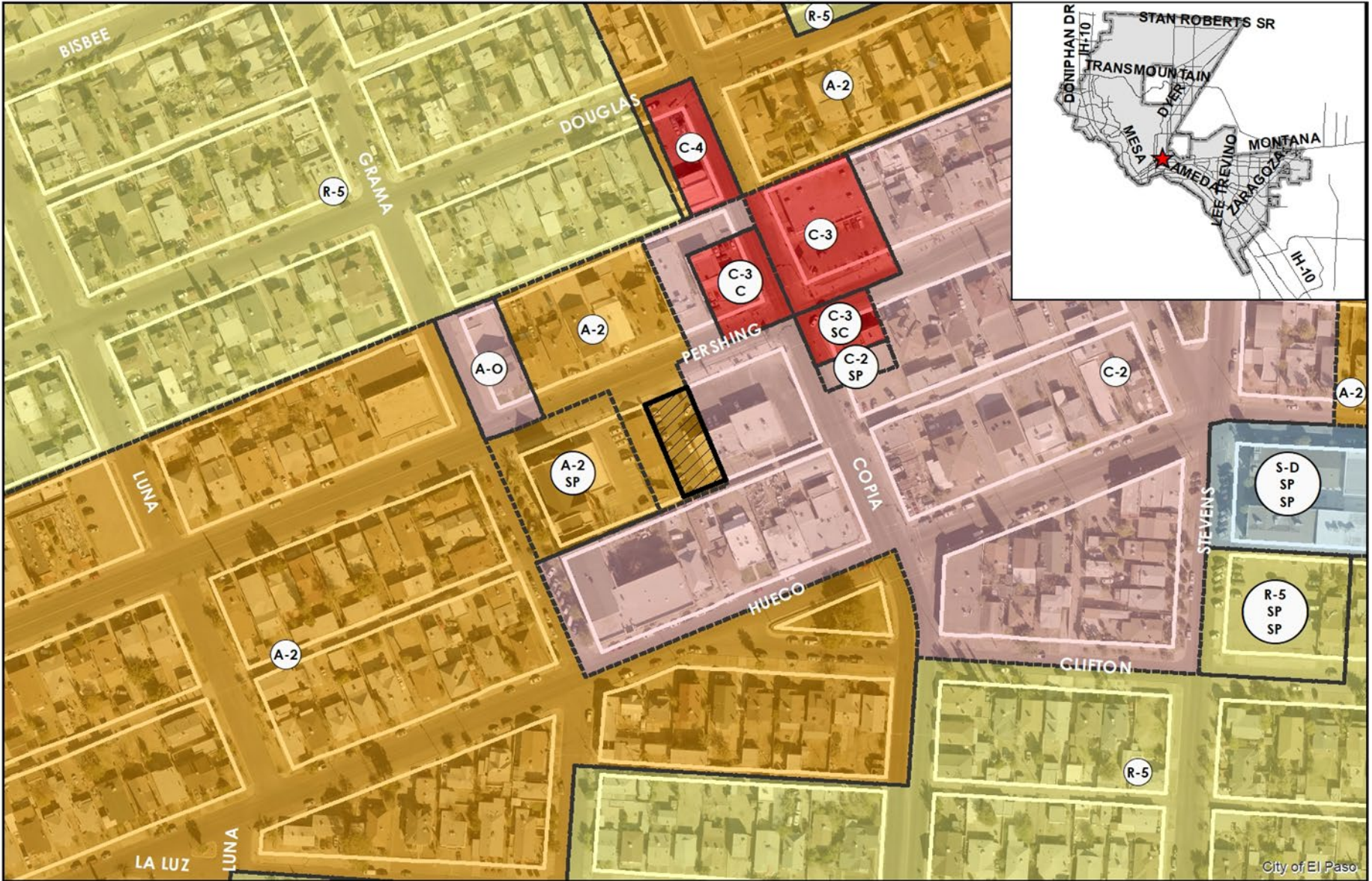
- **Planning Division recommendation:** Approval
- **CPC Vote:** Approval Recommendation on a 7-0 vote
- **Public Input:** Planning has not received any communication in support or opposition to the rezoning request; Notices sent to property owners within 300 feet on December 10, 2018.

Strategic Goal #3 Promote the Visual Image of El Paso

3.1 Provide business friendly permitting and inspection processes

3.2 Improve the visual impression of the community

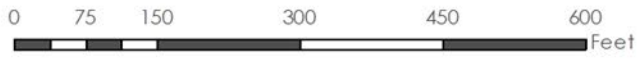
# PZRZ18-00048



This map is designed for illustrative purposes only. The features depicted here are approximate and more site-specific studies may be required to draw accurate conclusions. Enlargements of this map to scales greater than its original can induce errors and may lead to misinterpretations of the data. The Planning & Inspections Department Planning Division makes no claim to its accuracy or completeness.



 Subject Property





# PZRZ18-00048



This map is designed for illustrative purposes only. The features depicted here are approximate and more site-specific studies may be required to draw accurate conclusions. Enlargements of this map to scales greater than its original can induce errors and may lead to misinterpretations of the data. The Planning & Inspections Department Planning Division makes no claim to its accuracy or completeness.



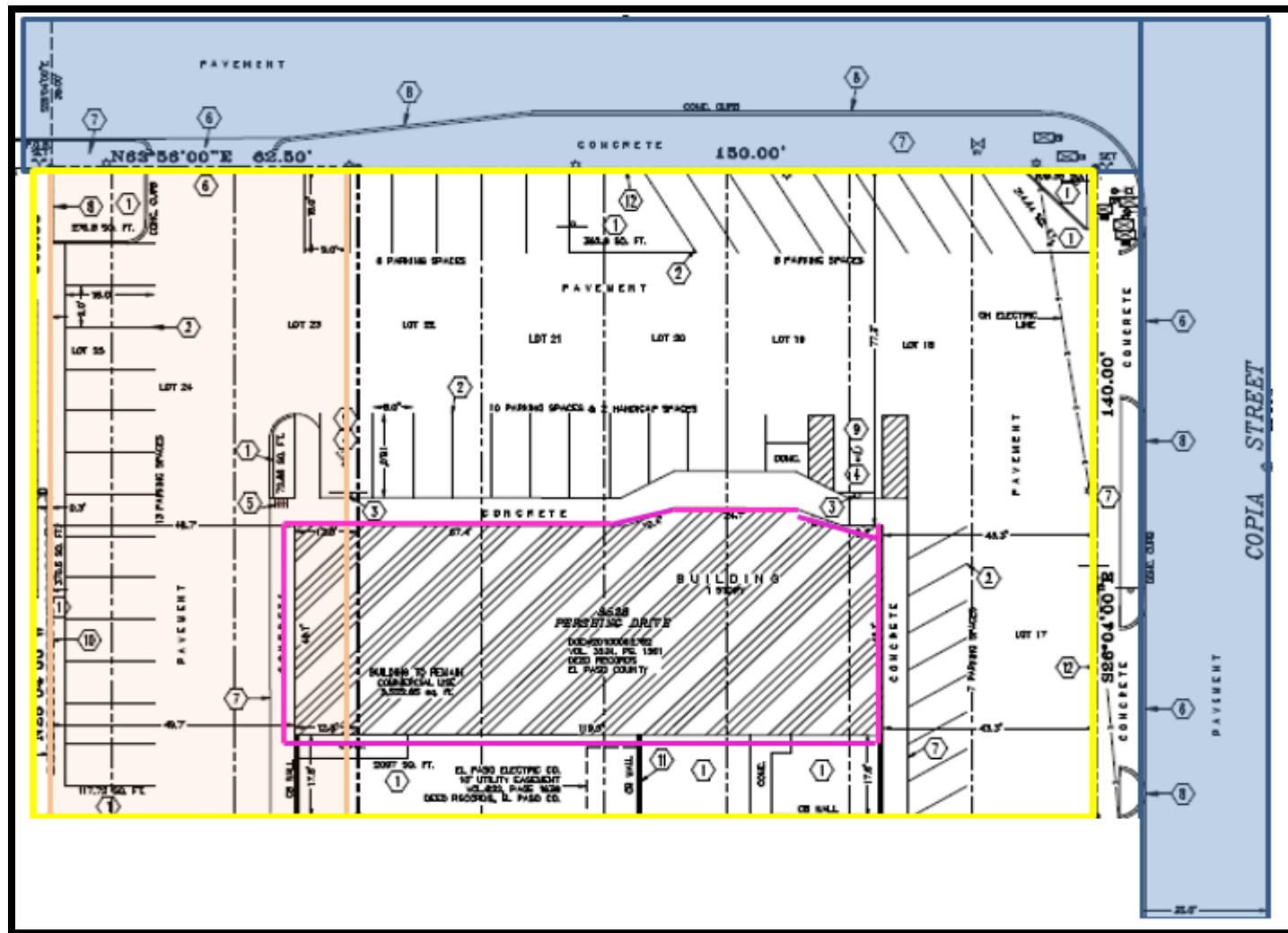
Subject Property







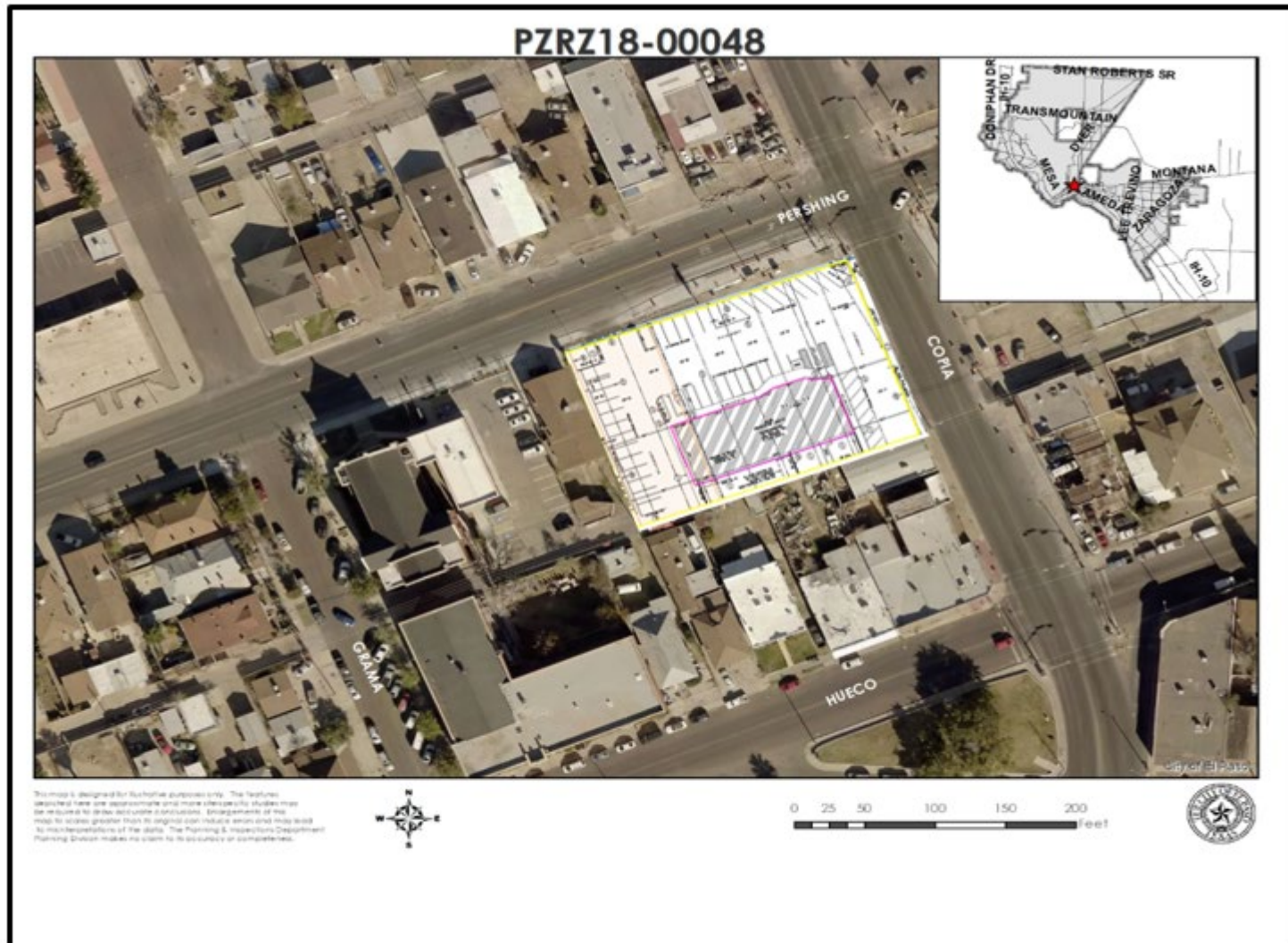
# Detailed Site Development Plan



*"Delivering Outstanding Services"*



# Superimposed Site Plan



*“Delivering Outstanding Services”*

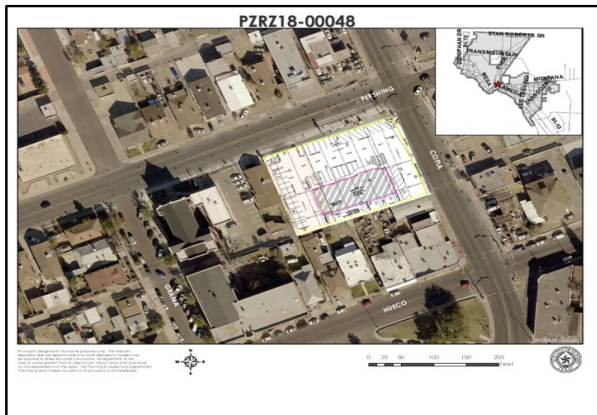


# Subject Property



*"Delivering Outstanding Services"*

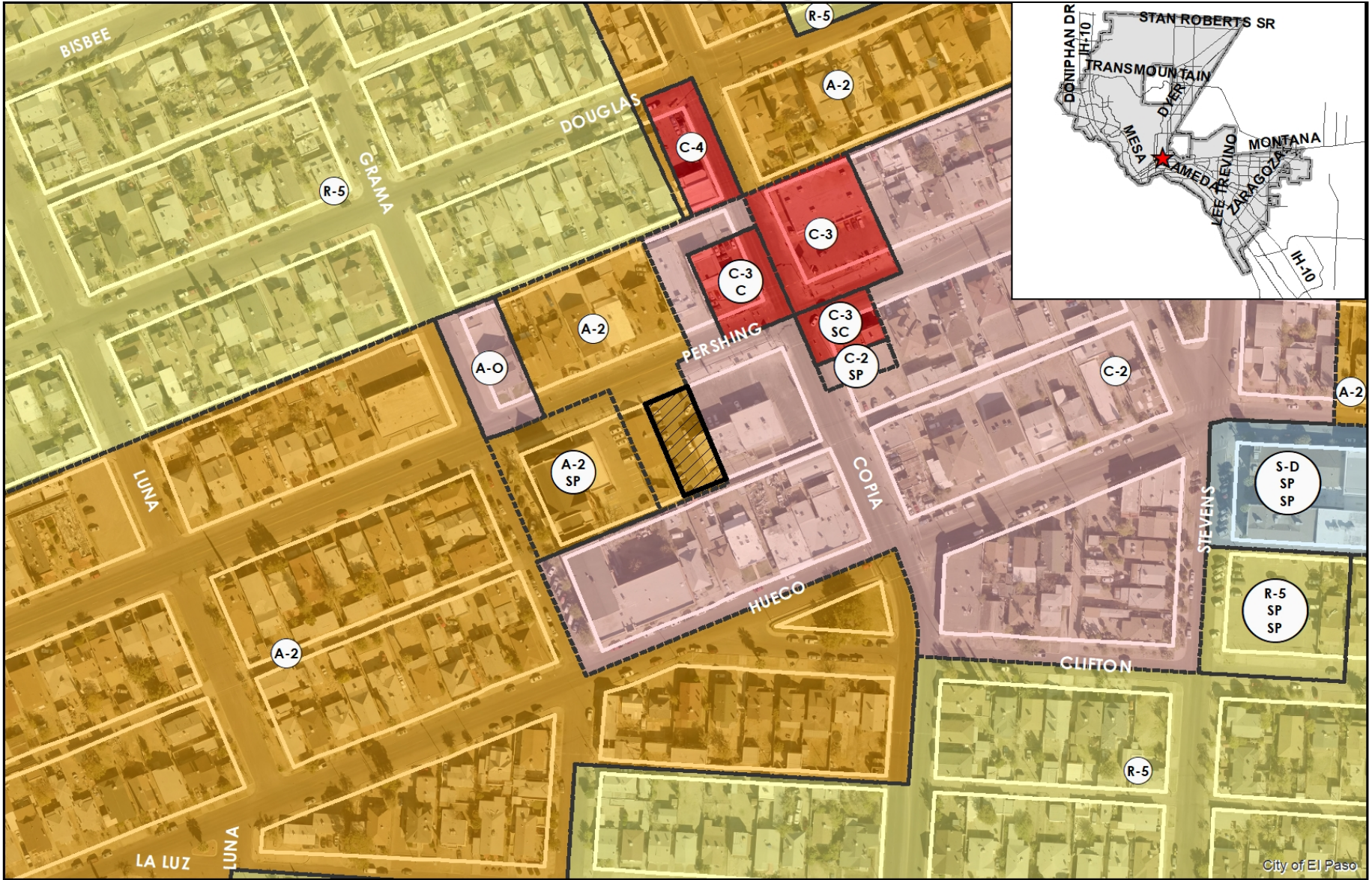




*"Delivering Outstanding Services"*



# PZRZ18-00048



This map is designed for illustrative purposes only. The features depicted here are approximate and more site-specific studies may be required to draw accurate conclusions. Enlargements of this map to scales greater than its original can induce errors and may lead to misinterpretations of the data. The Planning & Inspections Department Planning Division makes no claim to its accuracy or completeness.



Subject Property

