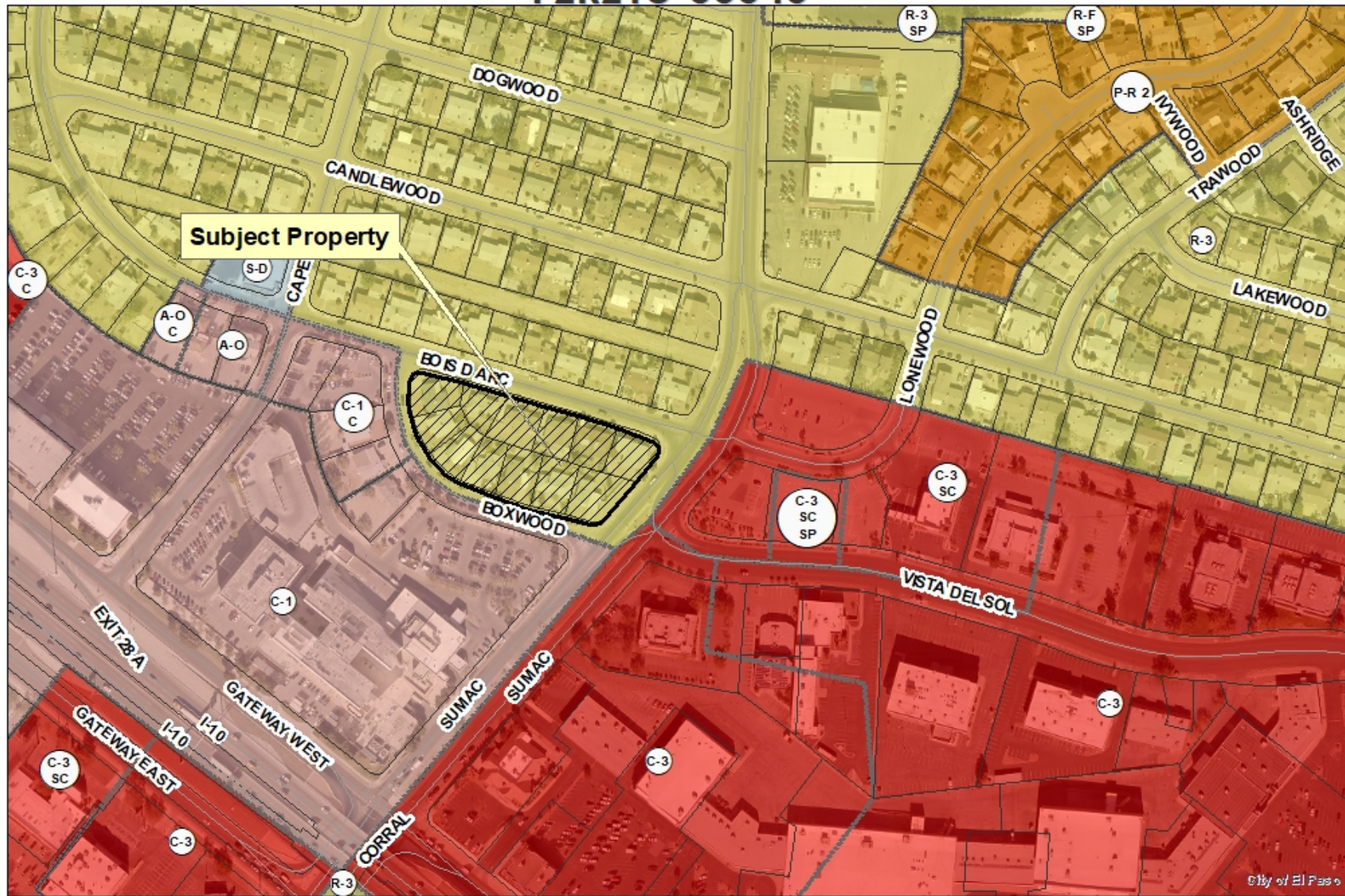
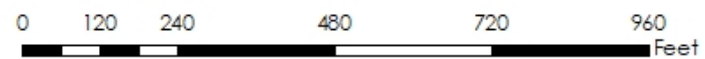




PZRZ18-00040



This map is designed for illustrative purposes only. The features depicted here are approximate and more site-specific studies may be required to draw accurate conclusions. Enlargements of this map to scales greater than its original can introduce errors and may lead to misinterpretations of the data. The Planning & Inspections Department Planning Division makes no claim to its accuracy or completeness.



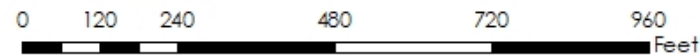


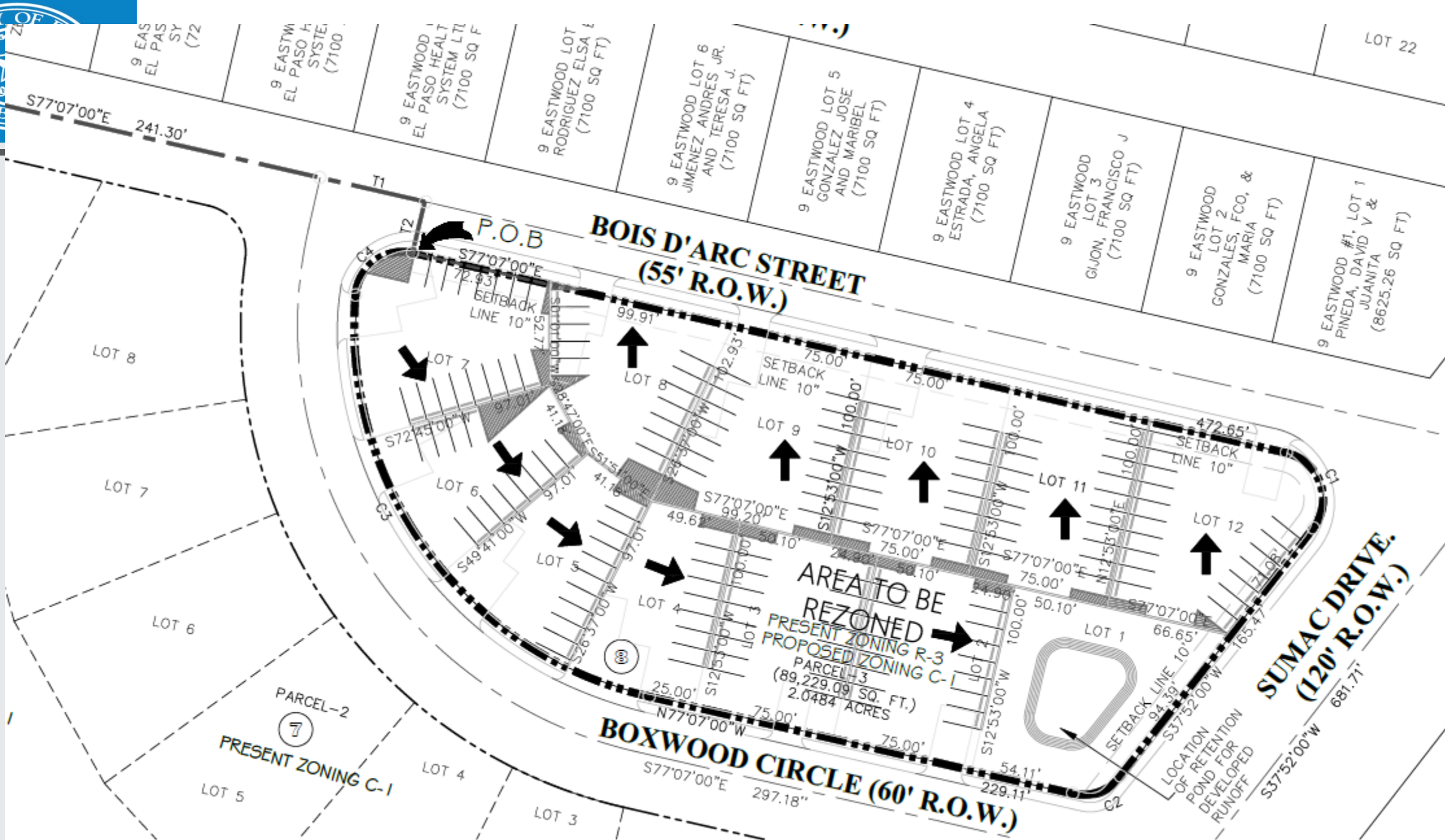
PZRZ18-00040



City of El Paso

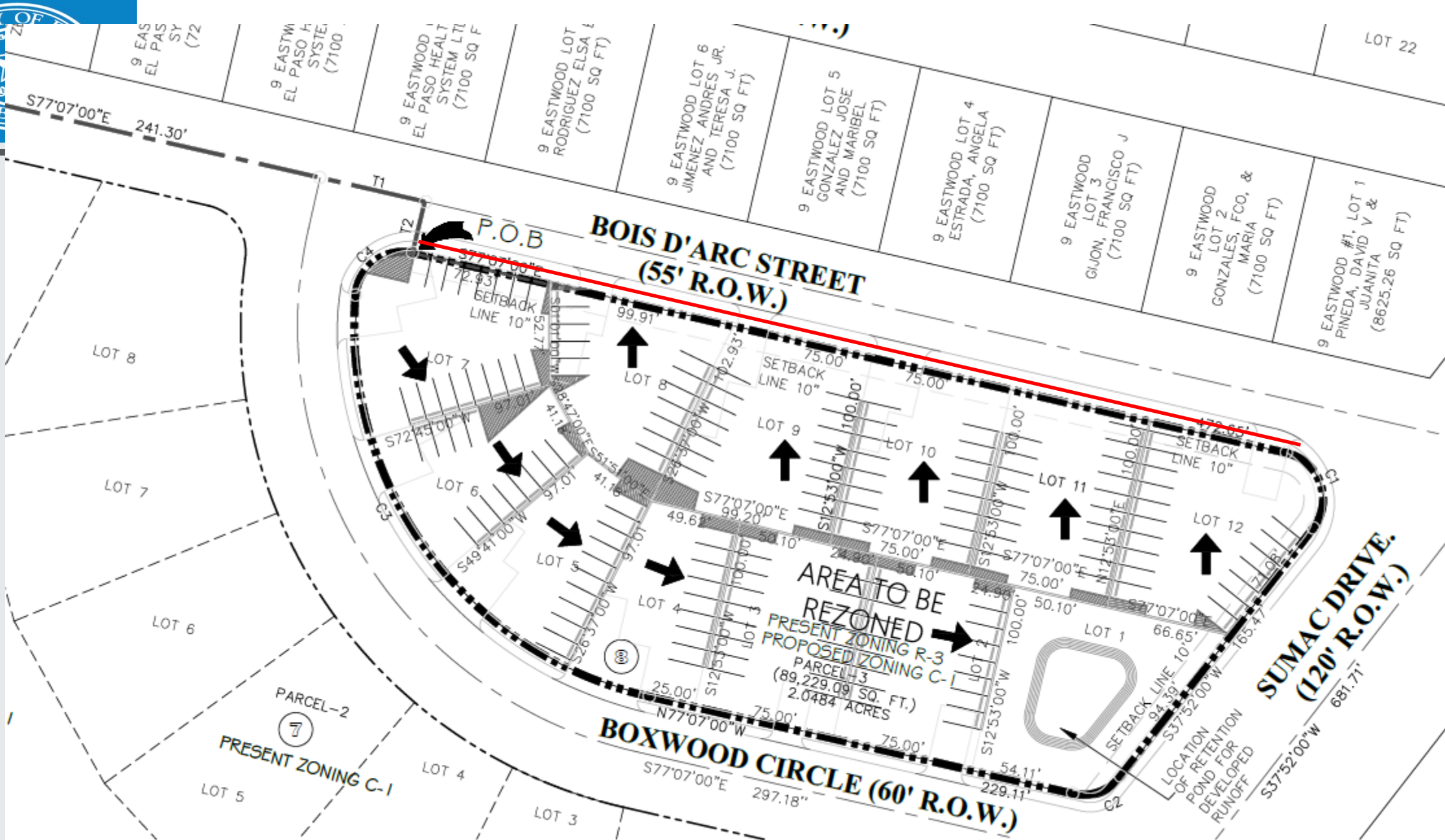
This map is designed for illustrative purposes only. The features depicted here are approximate and more site-specific studies may be required to draw accurate conclusions. Enlargements of this map to scales greater than its original can introduce errors and may lead to misinterpretations of the data. The Planning & Inspections Department Planning Division makes no claim to its accuracy or completeness.





Name _____ Address _____ City & Zip _____ Phone _____ Fax _____

"Delivering Outstanding Services"



Name _____ Address _____ City & Zip _____ Phone _____ Fax _____



**LOCATION OF PROPOSED: REZONING
PUBLIC HEARINGS ARE SCHEDULED.
PLEASE CALL: 915-212-1569**

**UBICACION DE PROPUESTA: REZONIFICACION
AUDIENCIAS PUBLICAS ESTAN PROGRAMADAS.
POR FAVOR HABLE AL: 915-212-1569**



LOCATION OF PROPOSED: REZONING
PUBLIC HEARINGS ARE SCHEDULED.
PLEASE CALL: 915-212-1569

UBICACION DE PROPUESTA: REZONIFICACION
AUDIENCIAS PUBLICAS ESTAN PROGRAMADAS.
POR FAVOR HABLE AL: 915-212-1569



N

W



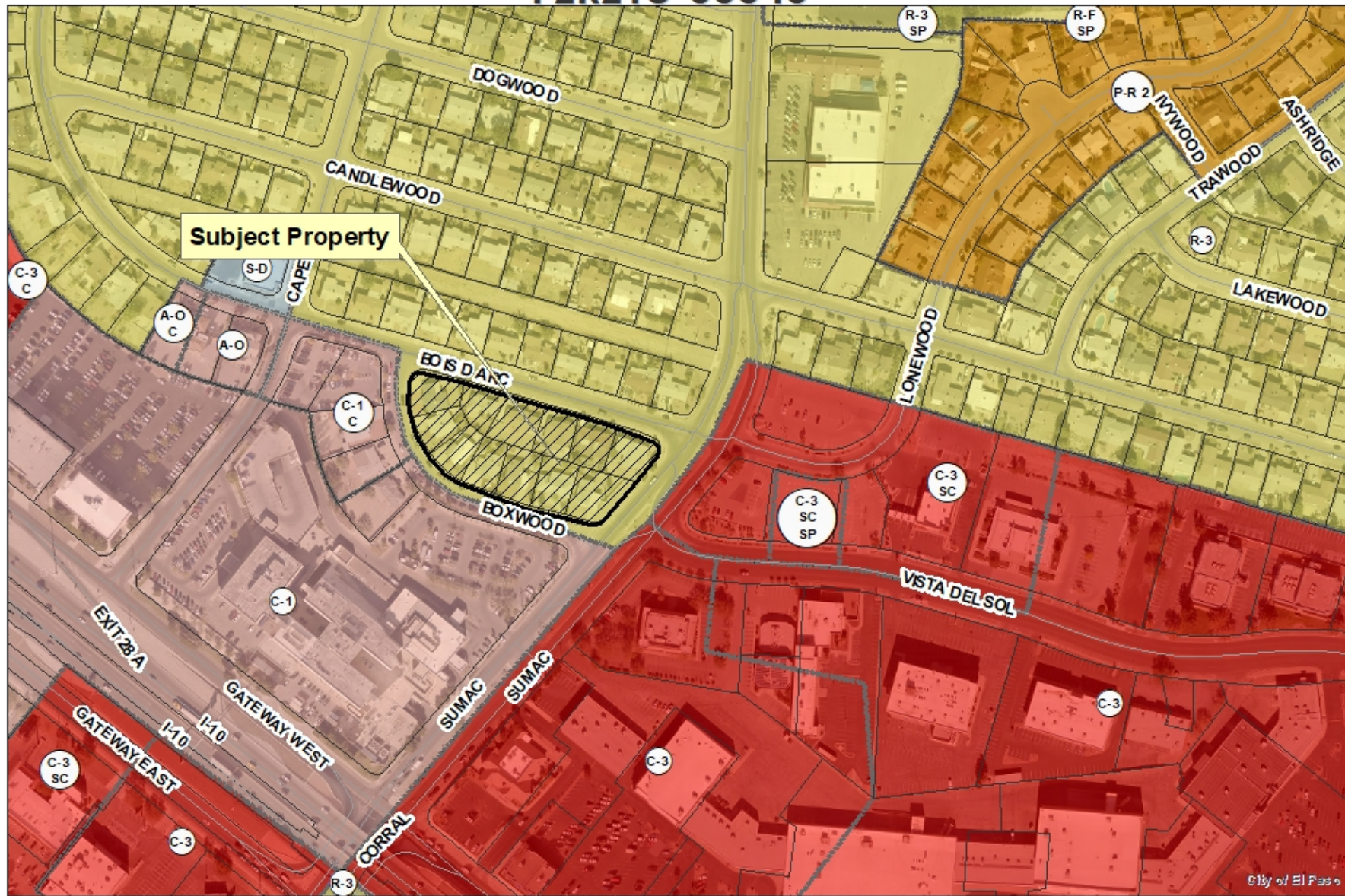
S

E





PZRZ18-00040



This map is designed for illustrative purposes only. The features depicted here are approximate and more site-specific studies may be required to draw accurate conclusions. Enlargements of this map to scales greater than its original can introduce errors and may lead to misinterpretations of the data. The Planning & Inspections Department Planning Division makes no claim to its accuracy or completeness.

