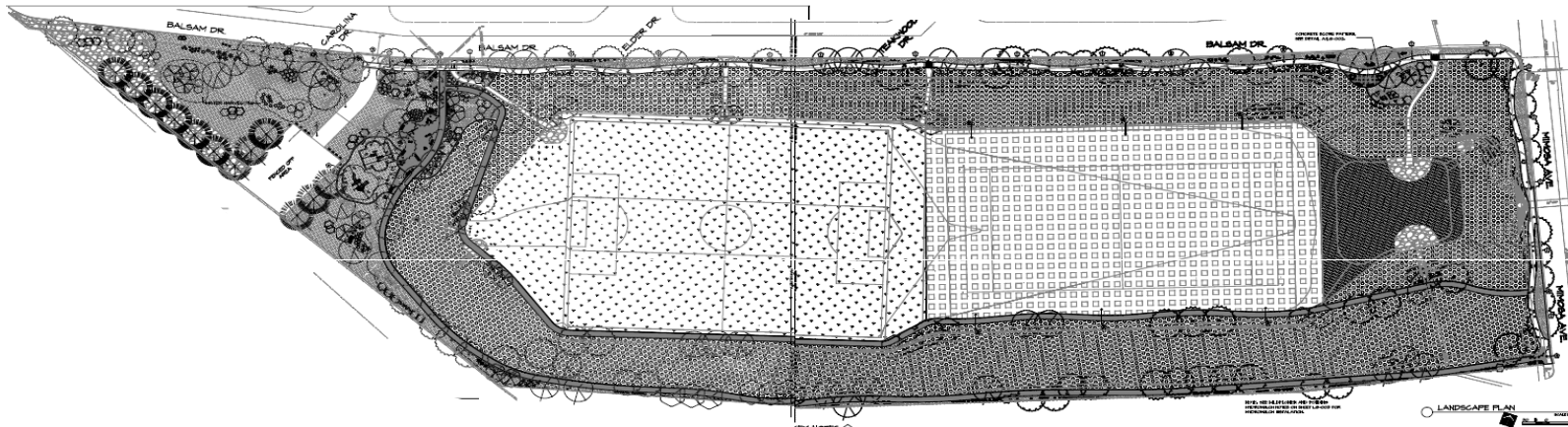




# CIP Project Update

## Vocational Park Pond



**2015 Strategic Goal 4.2: Create innovative recreational, educational and cultural programs**



## Vocational Park Pond

<b>Project Manager</b>	George Pinal
<b>District</b>	3
<b>Approved Budget</b>	\$ 1,037,006
<b>Source(s) of Funding</b>	FY12-13 Certificates of Obligation and El Paso Water Utilities
<b>Council Approval</b>	April 23, 2013
<b>Notice to Proceed</b>	June 10, 2013



# Vocational Park Pond

## Project Management Team

**City of El Paso's  
Project Manager**

George Pinal  
Engineering and Construction Management

**Contractor's  
Project Manager**

Alicia Burton  
Medlock Commercial Contractors



# Vocational Park Pond

## Issues Impacting Project Completion

**The project is behind original completion schedule. The following issues impacted schedule:**

- April 19, 2014- Heavy rain event washed out work contractor had completed. Contractor had to start from scratch.
- Contractor's failure to locate, procure, and subcontract landscaping and irrigation subcontractor to perform work. Original landscaping and irrigation subcontractor closed their business.
- Contractor had trouble placing sufficient workforce on job.



# Vocational Park Pond

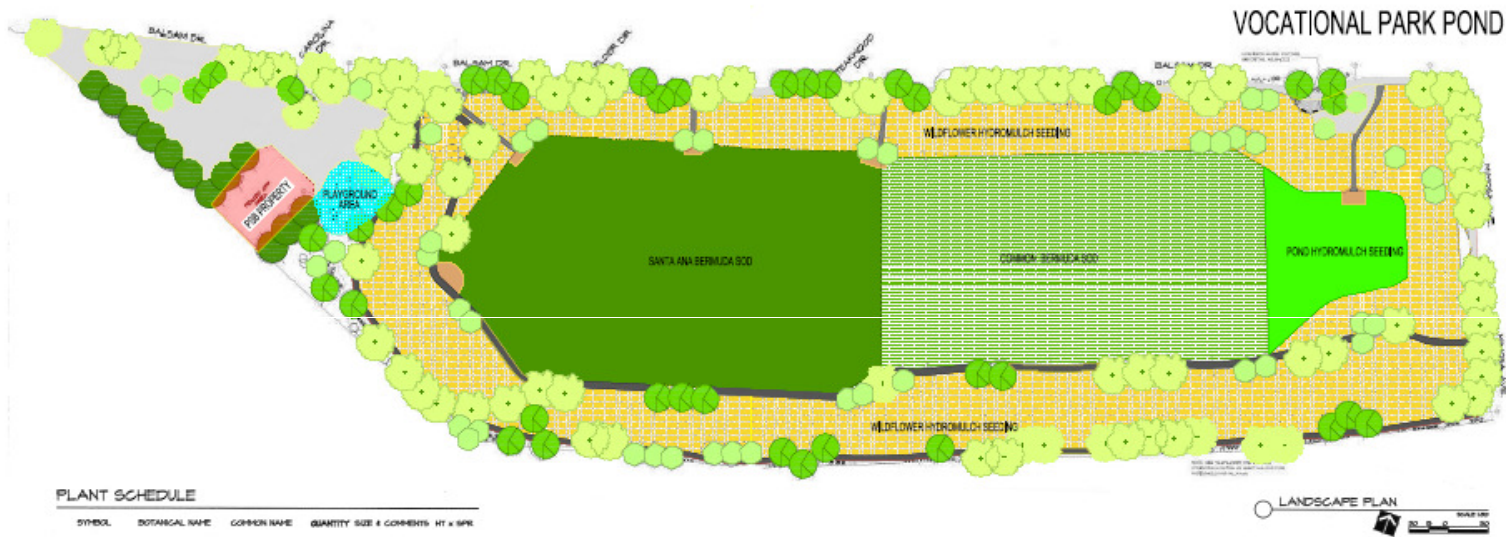
Aerial View on February 2013





# Vocational Park Pond

## Landscape Plan



**PLANT SCHEDULE**

SYMBOL	BOTANICAL NAME	COMMON NAME	QUANTITY	SIZE & COMMENTS	HT x SPK
TREES SHALL BE INSTALLED AS PER DETAILS					
	<i>Pistacia chinensis</i>	CHERRY PISTACHE	42	2" CALIPER, DPT.-12 FT. HEIGHT MIN.	40' x 30'
	<i>Ulmus parviflorus</i>	LACEBARK ELM	41	2" CALIPER, DPT.-12 FT. HEIGHT MIN.	40' x 30'
	<i>Fraxinus dipetala</i>	BAYWOOD ASH	38	2" CALIPER, DPT.-12 FT. HEIGHT MIN.	30' x 25'
	<i>Quercus agrifolia</i>	ARIZONA CYPRESS	44	1.5" DPT.-12 FT. HEIGHT MIN.	44' x 34'
	<i>Desmodium illinoense</i>	THORNLESS HONEY MESQUITE	37	2" CALIPER, DPT.-12 FT. HEIGHT MIN.	30' x 30'
	<i>Viburnum acerifolium</i>	CHASTE TREE	31	2" CALIPER	20' x 20'

- ROCK MULCH 4"-6", GREY ESCAPE STONE, 4" DEPTH - FILL ALL Voids IN ROCKS WITH 3/4" HT. FRANKLIN RED OR PADRE CANYON RED ROCK MULCH
- PROVIDE AND INSTALL ASPHALT DRIVEWAYS
- CONCRETE DRIVEWAY

- Cynodon dactylon* SANTA ANA BERMUDA SOD
- PLAYGROUND AREA
- WILDFLOWER HYDRONLCH SEEDING
- POND HYDRONLCH SEEDING
- Cynodon dactylon* 'Princess' COMMON BERMUDA GRASS SEEDING





# Vocational Park Pond

## Amenities Added to Address Neighborhood Concerns

**The following are amenities that we recently included to address the neighborhood association concerns:**

- Playground equipment
- Canopies over park benches
- Convert chat walking path on the bottom of the pond to an asphalt walking path.



# Vocational Park Pond

## Sidewalk and Landscaping Summary

### Landscaping

- Amount of trees that will be installed: 187
- Amount of shrubs to be installed: 533
- Sod area: 195,000 s.f. (4.48 acres)
- Wildflower area: 187,500 s.f. (4.30 acres)
- Hydromulch area: 16,000 s.f. (0.36 acres)

### Sidewalk and Walking Path

- Sidewalk: 1,706 ft.
- Asphalt pathway with curb: 3,258 ft.



# Vocational Park Pond

## Construction





# Vocational Park Pond

## Construction





# Vocational Park Pond

## Construction



*Chinese Pistache*  
*Pistacia chinensis*

Copyright © Robert O'Brien



# Vocational Park Pond

## Construction



Arizona Cypress  
*Cupressus arizonica*



Copyright © Robert O'Brien



# Vocational Park Pond

## Construction



Honey Mesquite  
*Prosopis glandulosa*



Copyright © Robert O'Brien



# Vocational Park Pond

## Work Status

Activity	Status
Grading	Complete
Walkways	95%
Irrigation	Complete
Landscaping	90%
Drainage structures	90%



# Vocational Park Pond

## Public Outreach and Community Engagement

- **Community Meeting:** April 29, 2013
- **Meeting on site with Neighborhood Association president:** October 6, 2014; December 4, 2014



# Vocational Park Pond

## Threats to Project Completion

- None to report



# Vocational Park Pond

Change Order Summary	Budget Impact
Change orders related to design issues	\$46,524.67
Parks request for a 100 electrical amp service	\$1,604.97
Change orders related to El Paso Water Utilities work and paid for by El Paso Water Utilities	\$26,188.55
<b>TOTAL CHANGE ORDERS:</b>	<b>\$ 74,318.19</b>



## Vocational Park Pond

**Original Date When Project Would Be Open to Public: August 22, 2014**

**Current Date When Project Will be Open to Public: May 29, 2015**

