

FUTURE LAND USE MAP AMENDMENT

PLCP19-00004
73-acre NE Property





Recommendation | Public Input

2

Staff recommendation:

Approval

CPC Vote:

Approval Recommendation (8-0)

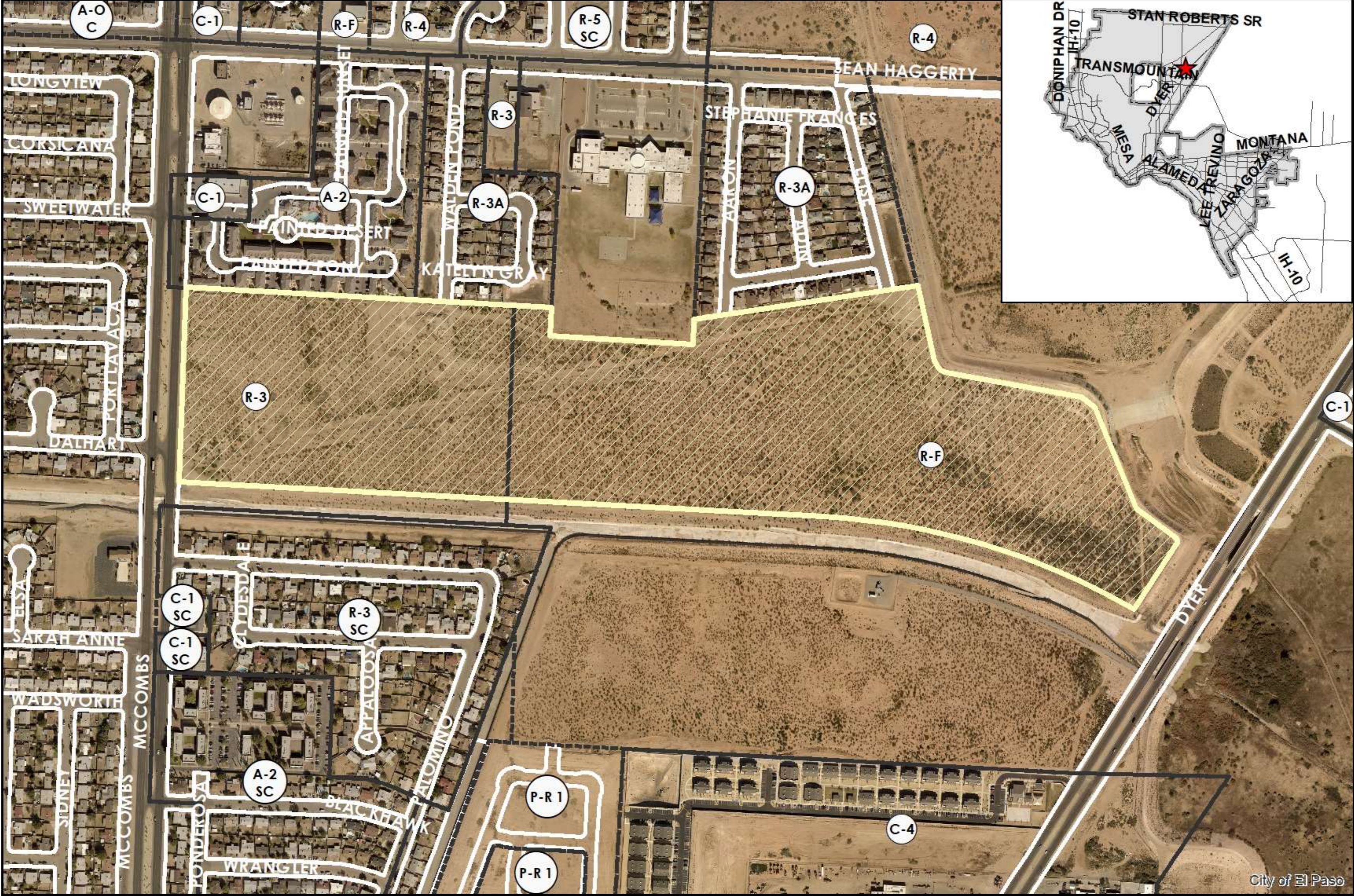
Public Input:

None received.

Strategic Goal #3 Promote the Visual Image of El Paso

3.1 Provide business friendly permitting and inspection processes

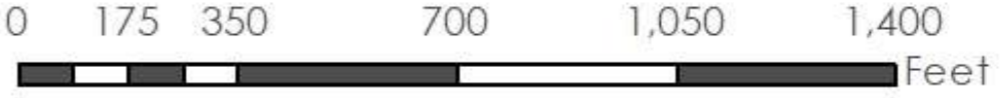
3.2 Improve the visual impression of the community

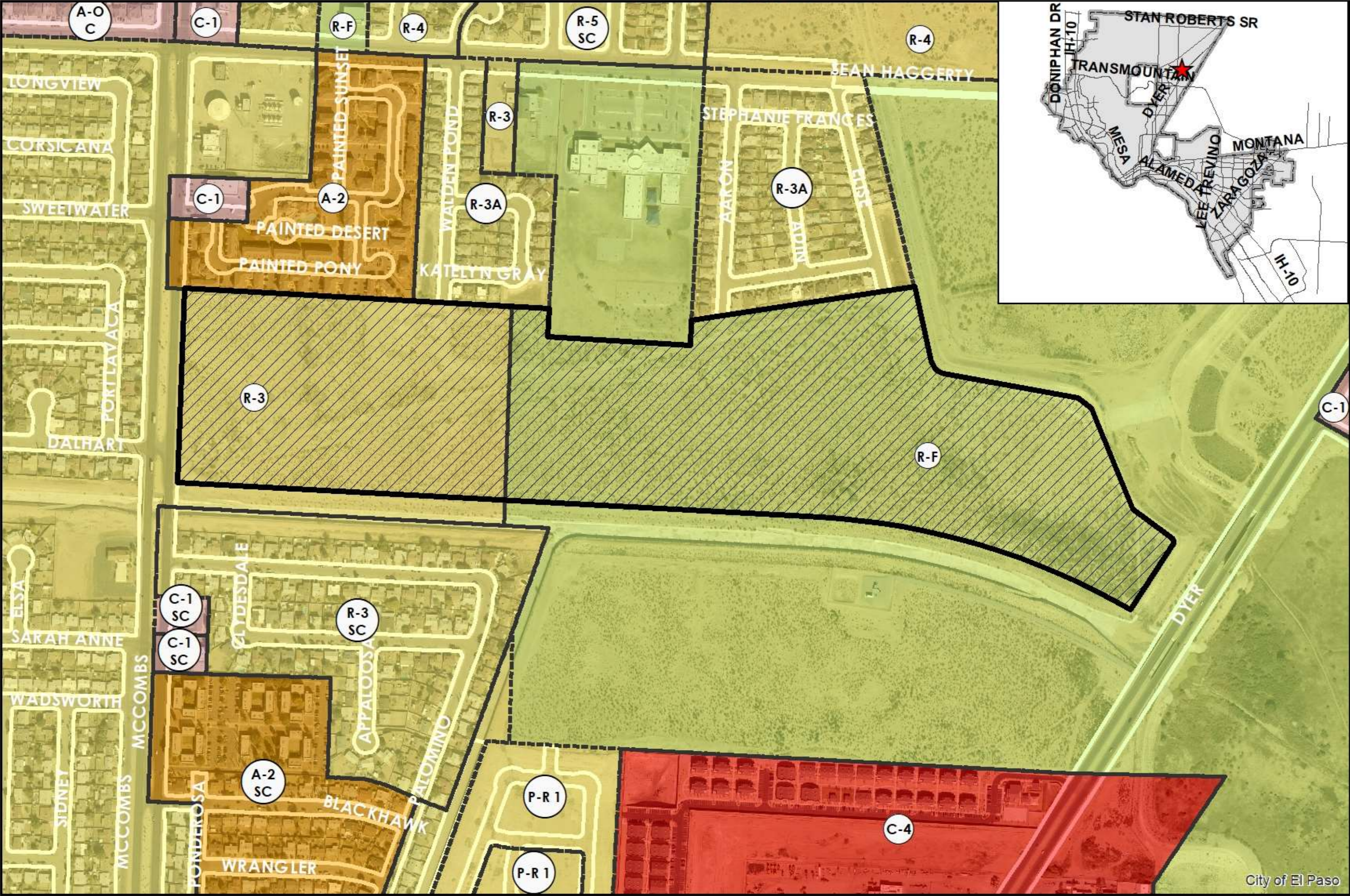


This map is designed for illustrative purposes only. The features depicted here are approximate and more site-specific studies may be required to draw accurate conclusions. Enlargements of this map to scales greater than its original can induce errors and may lead to misinterpretations of the data. The Planning & Inspections Department Planning Division makes no claim to its accuracy or completeness.



Subject Property

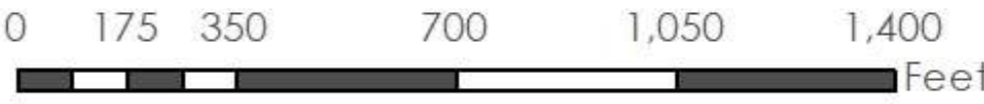




This map is designed for illustrative purposes only. The features depicted here are approximate and more site-specific studies may be required to draw accurate conclusions. Enlargements of this map to scales greater than its original can induce errors and may lead to misinterpretations of the data. The Planning & Inspections Department Planning Division makes no claim to its accuracy or completeness.



 Subject Property



Definitions

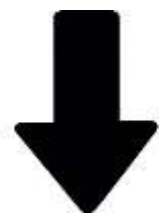
Future Land Use Map (FLUM)

- Laid out in Plan El Paso
- Guide to the form, direction, and timing of future growth
- Two sectors:
 1. Open-space sectors (growth delayed or not anticipated)
 2. Growth sectors (urban development is encouraged immediately)

O-1 Preserve

Open space sector:

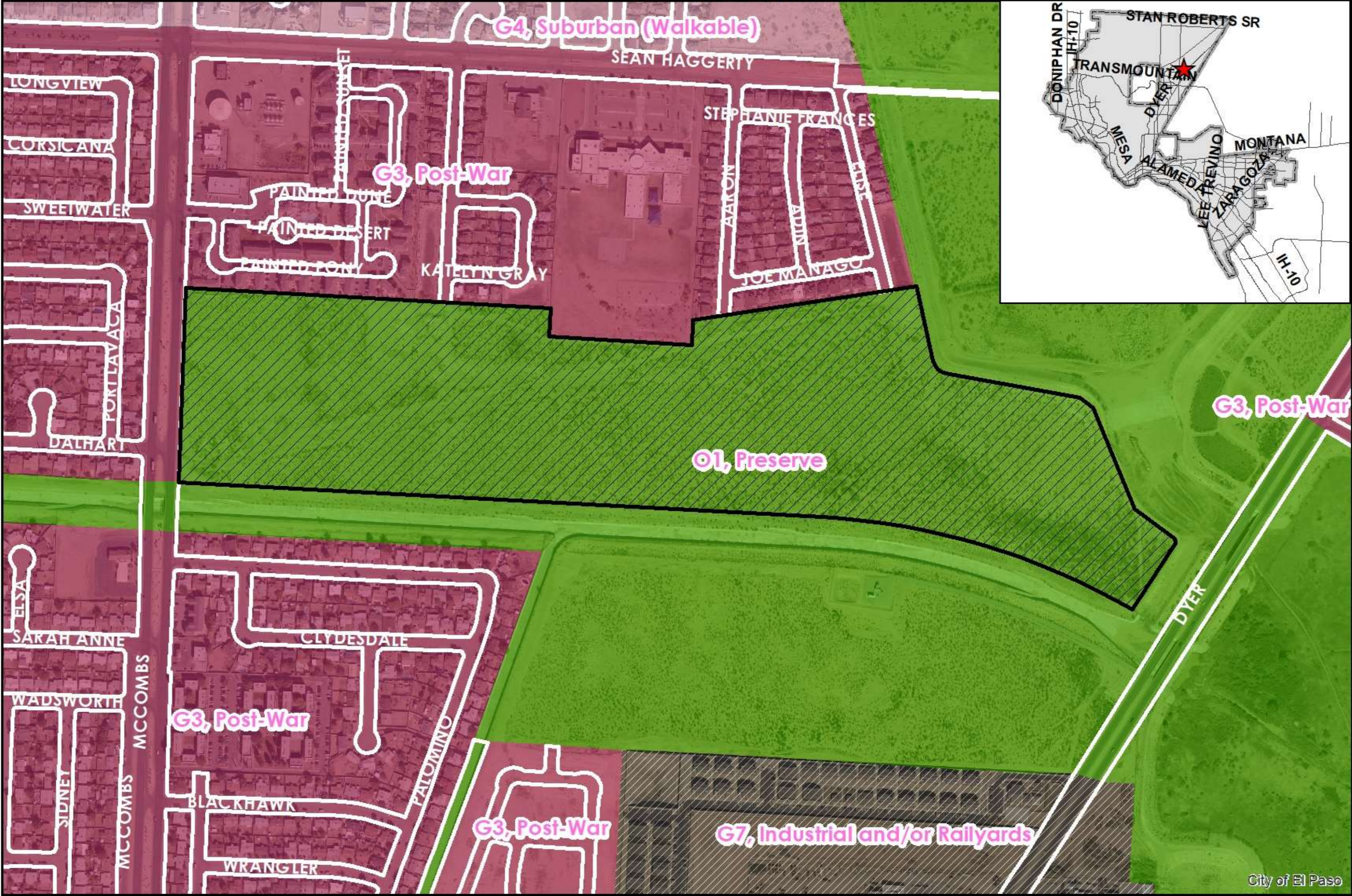
- Publicly owned land - Franklin Mountains and Hueco Tanks State Parks, all City and County parks and public drainage areas, and cemeteries (even if private).
- These lands will not be developed due to their ownership and current use.



G-3 – Post-War

Transitional neighborhoods sector:

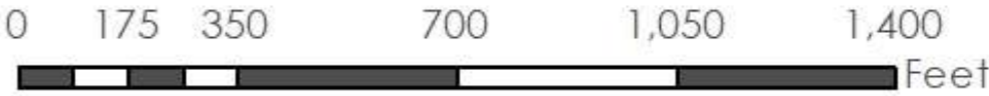
- Typically developed from the 1950s through the 1980s.
- Streets laid out with curvilinear patterns without alleys
- Shopping centers are located at major intersections behind large parking lots.

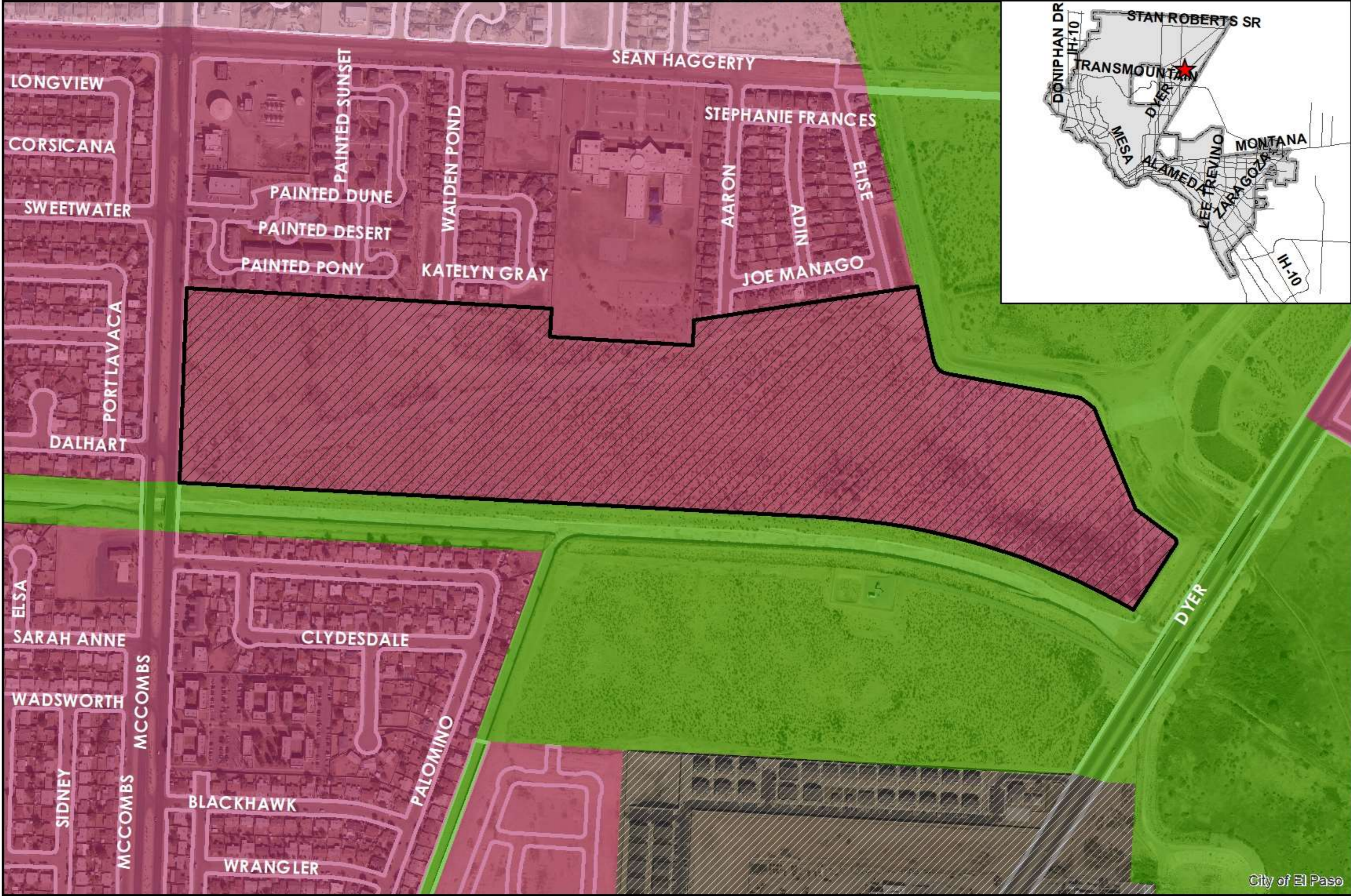


This map is designed for illustrative purposes only. The features depicted here are approximate and more site-specific studies may be required to draw accurate conclusions. Enlargements of this map to scales greater than its original can induce errors and may lead to misinterpretations of the data. The Planning & Inspections Department Planning Division makes no claim to its accuracy or completeness.



 Subject Property





This map is designed for illustrative purposes only. The features depicted here are approximate and more site-specific studies may be required to draw accurate conclusions. Enlargements of this map to scales greater than its original can induce errors and may lead to misinterpretations of the data. The Planning & Inspections Department Planning Division makes no claim to its accuracy or completeness.



 Subject Property

0 175 350 700 1,050 1,400 Feet



THANK YOU

