



# Alabama, Davis, Delta, and Yarbrough Bridge Construction

March 5, 2019



*Strategic Plan Goal:*

*7) Enhance and Sustain El Paso's Infrastructure Network*

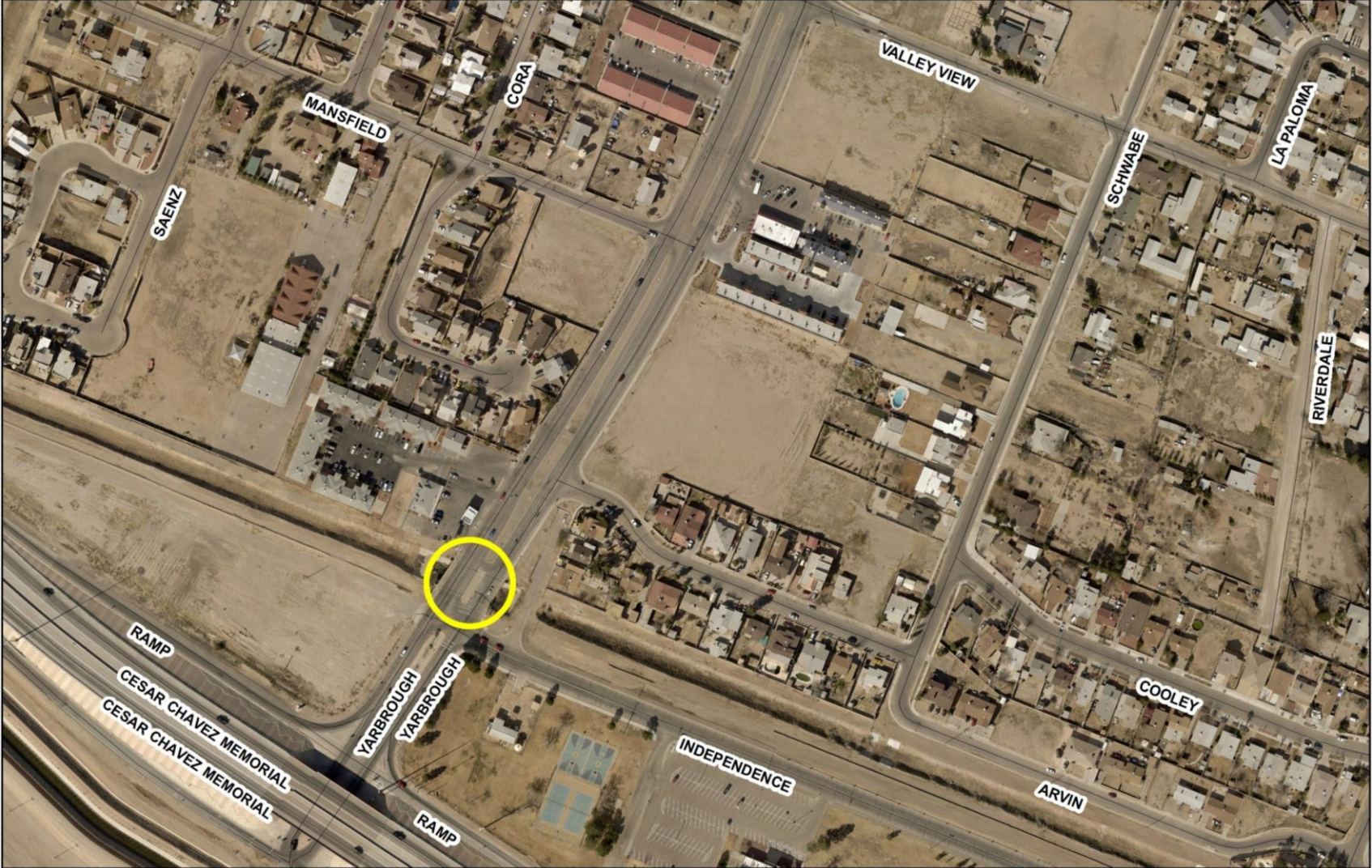
# Project Details

- Work will consist of the design and reconstruction of the Alabama, Davis, Delta, and Yarbrough bridges in El Paso.
- Funding:
  - FHWA and State: 90%
  - City COs: 10%



# Project Location – Yarbrough Drive Bridge

Intersection of Yarbrough Drive and Independence Drive



Estimated total project cost: \$1,875,614.00

# Project Location – Alabama Street Bridge

Intersection of Alabama Street and Rosemond Canyon Road



Estimated total project cost: \$1,331,931.00

# Project Location – Davis Drive Bridge

Between Winchester Road and Kilburn Way



Estimated total project cost: \$757,169.00

# Project Location – Delta Drive Bridge

Intersection of Delta Drive and Manny Martinez



Estimated total project cost: \$1,625,759.00

# Procurement Summary

- **Requests for Qualifications**
  - **3 firms submitted statements of qualifications**
  
- **Recommended Actions**
  - **Authorization for the City Manager to sign an Agreement for Professional Services between the City of El Paso and Consor Engineers, LLC. for a project known as Alabama, Davis, Delta, and Yarbrough bridge construction in the amount of \$635,477.78**

A black and white aerial photograph of a city, likely Los Angeles, viewed from a high vantage point on a hillside. The foreground shows rocky terrain with sparse vegetation. The middle ground is filled with a dense urban landscape, including numerous buildings, parking lots, and roads. In the background, a range of mountains is visible under a sky filled with large, dramatic clouds. The text "THANK YOU" is superimposed in the center of the image in a large, bold, black font.

**THANK YOU**