



# Trailheads and Trails



Strategic Plan Goals:

4) **Enhance El Paso's Quality of Life through Recreational, Cultural, and Educational Environments**

8) Nurture and Promote a Healthy, Sustainable Community



# Table of Contents

- Background
- Active Projects
- Program Information



# Background

- Approved as part of the 2012 Quality of life Bond
- Included as Initiative 7 of the 20 in 2020 Strategic Plan



## TRAILHEAD AMENITIES

-  **TRASH RECEPTACLES**
-  **INFORMATION KIOSK**
-  **MUTT MITT STATION**
-  **PARKING AREA**
-  **COVERED SOLAR PICNIC TABLE**
-  **BICYCLE REPAIR STATION**
-  **DRINKING FOUNTAIN**

# Active Projects



# 1000 Steps Trailhead



## 1000 STEPS

# 1000 Steps Trailhead



Grand  
opening  
celebration

March 23<sup>rd</sup>  
at 10:00 am

# Jan Sumrall Memorial Trailhead



## JAN SUMRALL MEMORIAL

# Jan Sumrall Memorial Trailhead

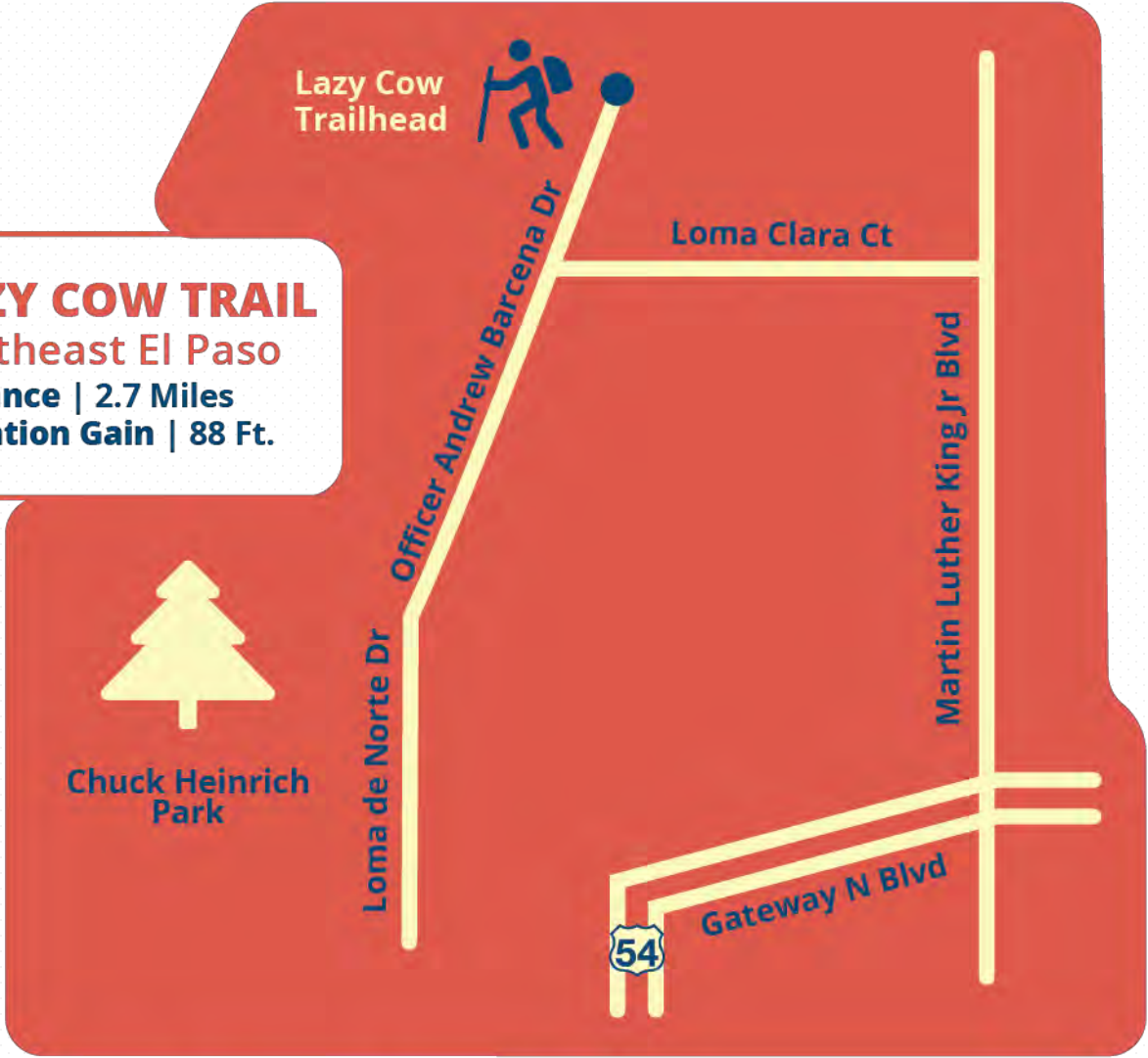
Grand opening  
celebration

March 9<sup>th</sup> at  
10:30 am



# Lazy Cow Trailhead

**LAZY COW TRAIL**  
Northeast El Paso  
Distance | 2.7 Miles  
Elevation Gain | 88 Ft.



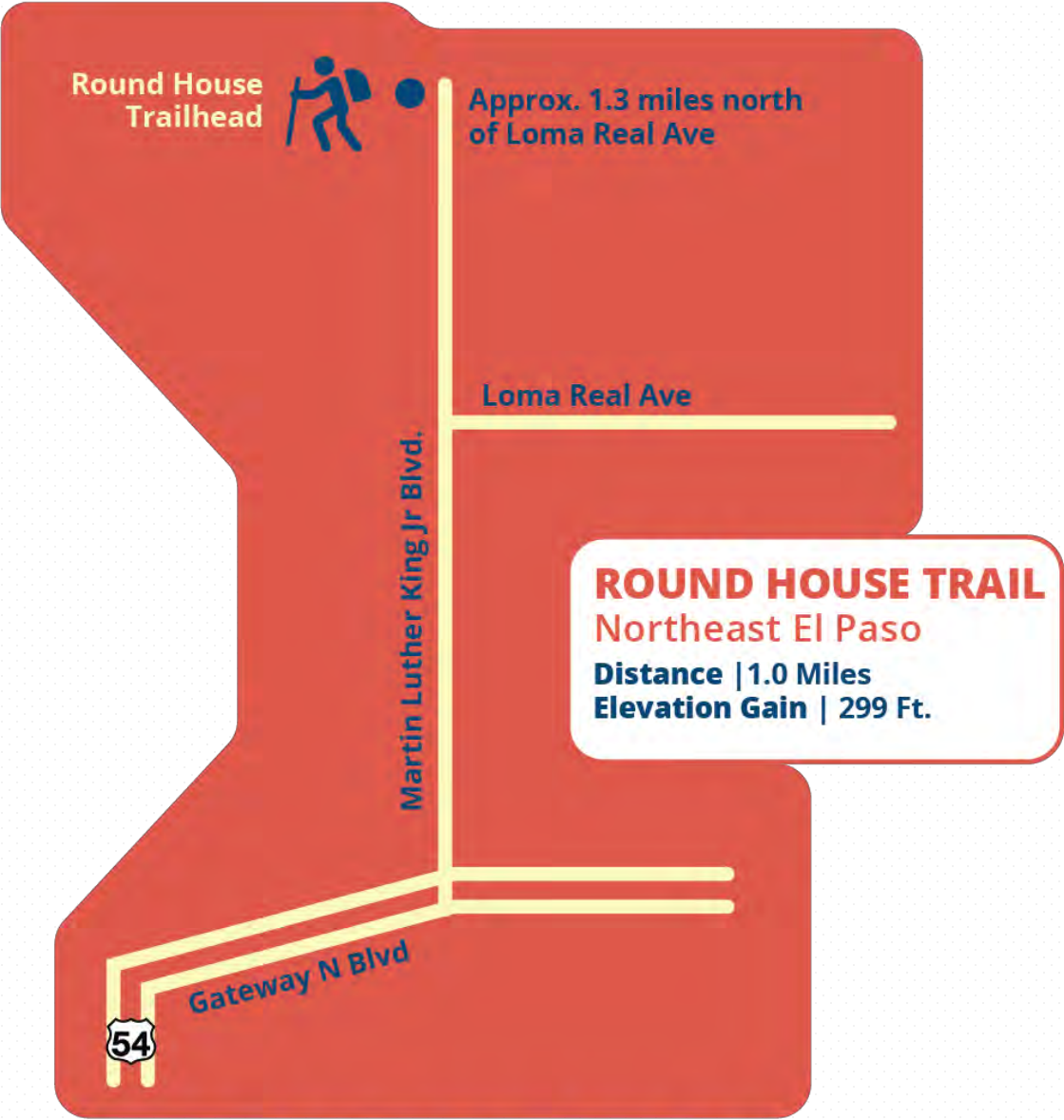
# LAZY COW

# Lazy Cow Trailhead



Grand opening celebration  
held on March 2<sup>nd</sup>

# Round House Trailhead



# ROUND HOUSE

# Round House Trailhead



Grand opening celebration  
held on March 2<sup>nd</sup>





**1000 STEPS TRAIL**  
West El Paso  
Distance | 1.64 Miles  
Elevation Gain | 987 Ft.

### 1000 STEPS



**THUNDERBIRD TRAIL**  
West El Paso  
Distance | .85 Miles  
Elevation Gain | 459 Ft.

### JAN SUMRALL MEMORIAL

#### TRAILHEAD AMENITIES

- TRASH RECEPTACLES
- INFORMATION KIOSK
- MUTT MITT STATION
- PARKING AREA
- COVERED SOLAR PICNIC TABLE
- BICYCLE REPAIR STATION
- DRINKING FOUNTAIN

**LOOKING FOR AN OUTDOOR ADVENTURE?**

The City of El Paso invites you to check out the new entrances to four popular trails.



EL PASO PARKS & RECREATION



**ROUND HOUSE TRAIL**  
Northeast El Paso  
Distance | 1.0 Miles  
Elevation Gain | 299 Ft.

### ROUND HOUSE



**LAZY COW TRAIL**  
Northeast El Paso  
Distance | 2.7 Miles  
Elevation Gain | 88 Ft.

### LAZY COW

The bond-funded projects are part of the City's commitment to enhance El Paso's quality of life through the exceptional recreational, cultural and educational opportunities.

**LOOKING FOR AN OUTDOOR ADVENTURE?**

The City of El Paso invites you to check out the new entrance to Lazy Cow.

EL PASO PARKS & RECREATION

#### TRAILHEAD AMENITIES

- TRASH RECEPTACLES
- INFORMATION KIOSK
- MUTT MITT STATION
- PARKING AREA
- COVERED SOLAR PICNIC TABLE
- BICYCLE REPAIR STATION
- DRINKING FOUNTAIN

### LAZY COW



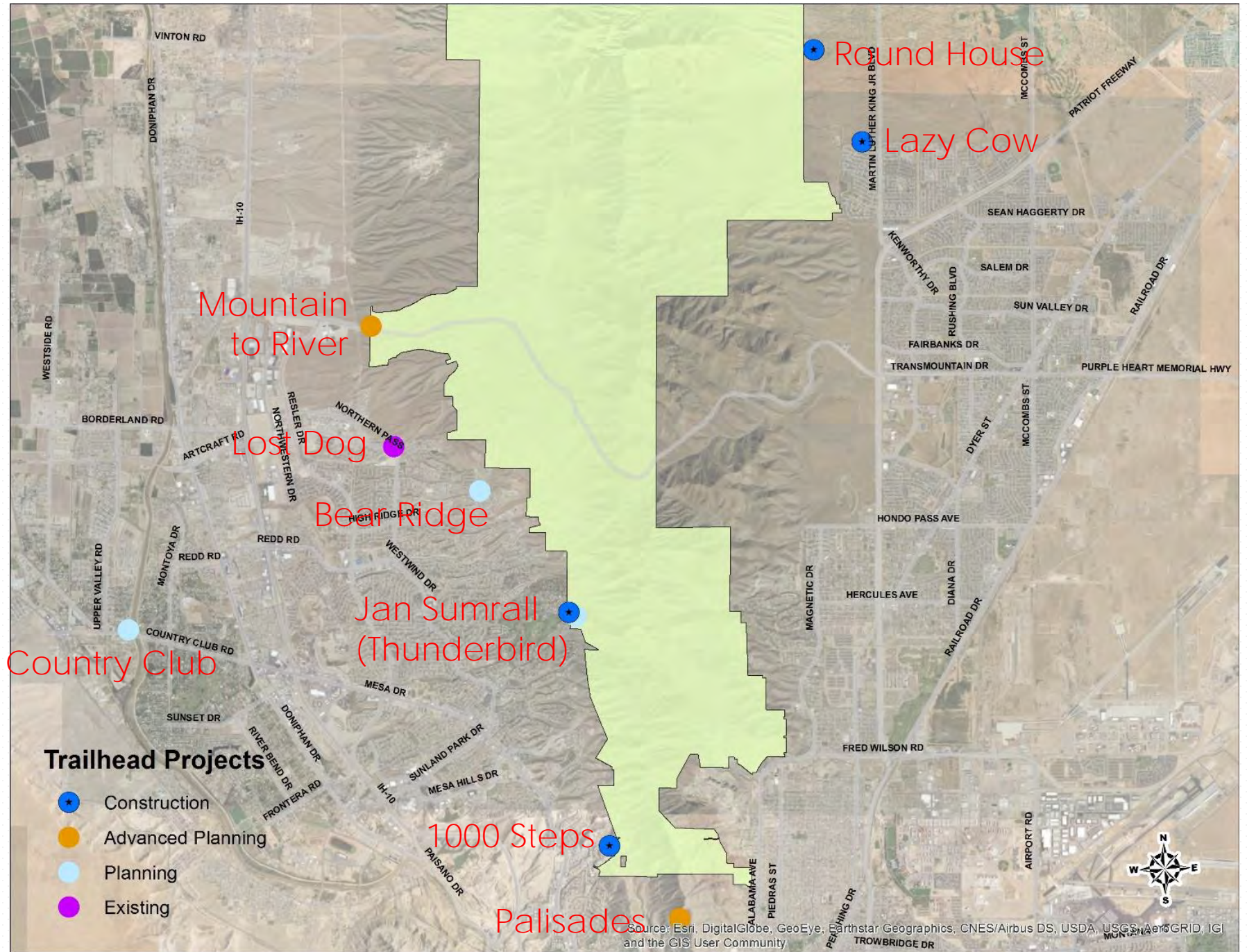
**LAZY COW TRAIL**  
Northeast El Paso  
Distance | 2.7 Miles  
Elevation Gain | 88 Ft.



# Trailhead and Trail Information



# Trailhead Plan

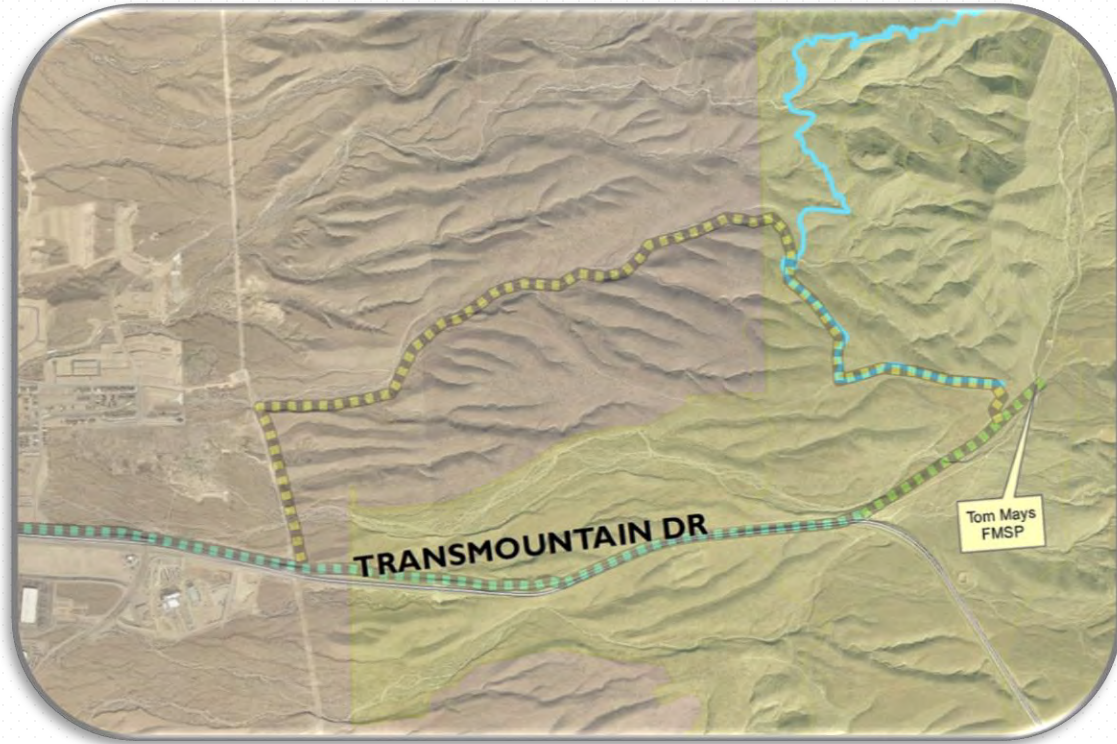


# Trailhead Programming

Project	District	Budget	FY2019	FY2020+
Lazy Cow (C)	4	\$125,000	Complete	
Roundhouse (C)	4	\$125,000	Complete	
Thousand Steps (C)	1	\$125,000	Complete	
Jan Sumrall Memorial (Thunderbird) (C)	1	\$125,000	Complete	
Mountain To River Trailhead (DC) X	1	\$125,000	Predesign	
Palisades (DC)	1	\$300,000	Coordination with EPW	
Country Club Trailhead (DC) Y	1,8	\$125,000	Predesign	
Franklin Hills Bear Ridge (DC)	1	\$125,000		Programmed- Design and construction

Quality of Life Bond allocated \$2M

# Trailheads



Mountain to River  
(Exact location under consideration)

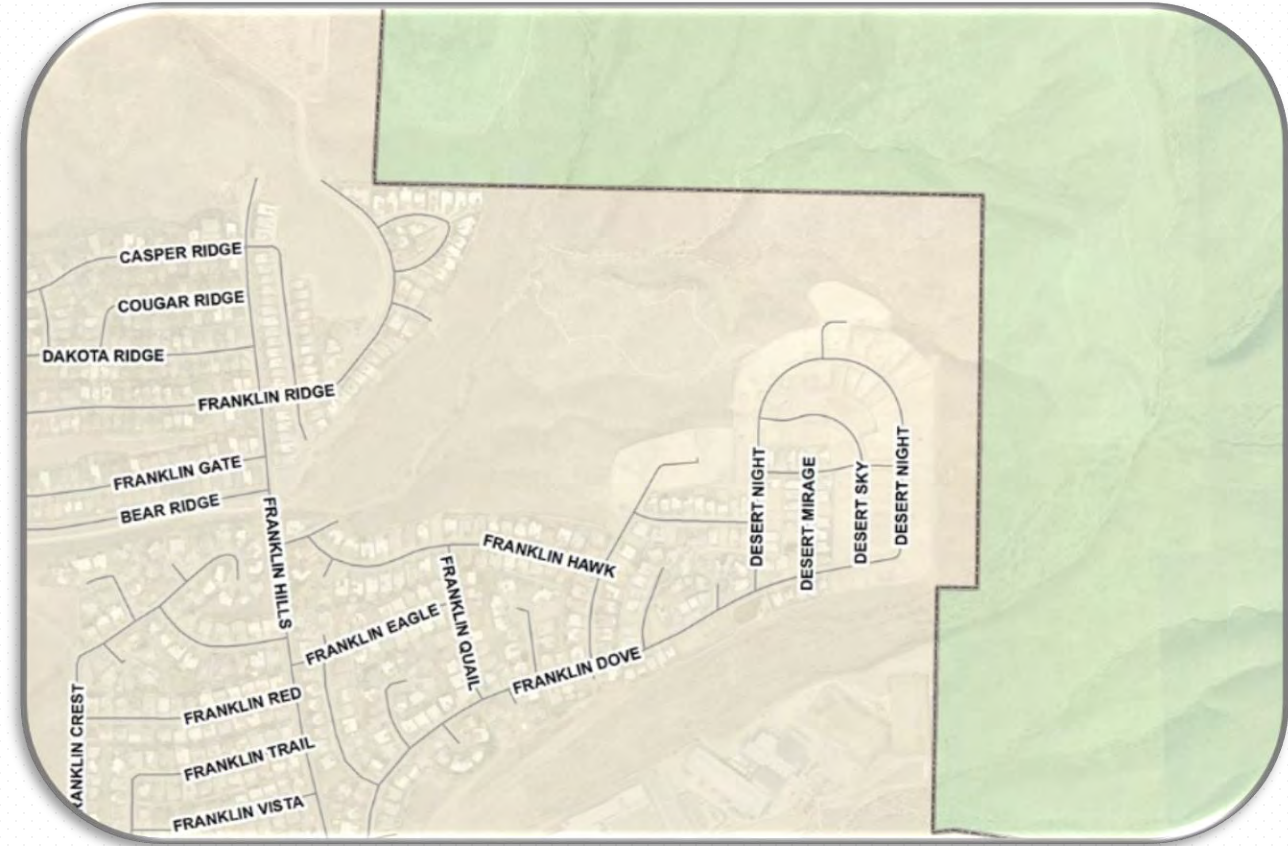


Palisades

# Trailheads



Country Club  
River Trail



Franklin Hills/Bear Ridge  
(Exact location under consideration)

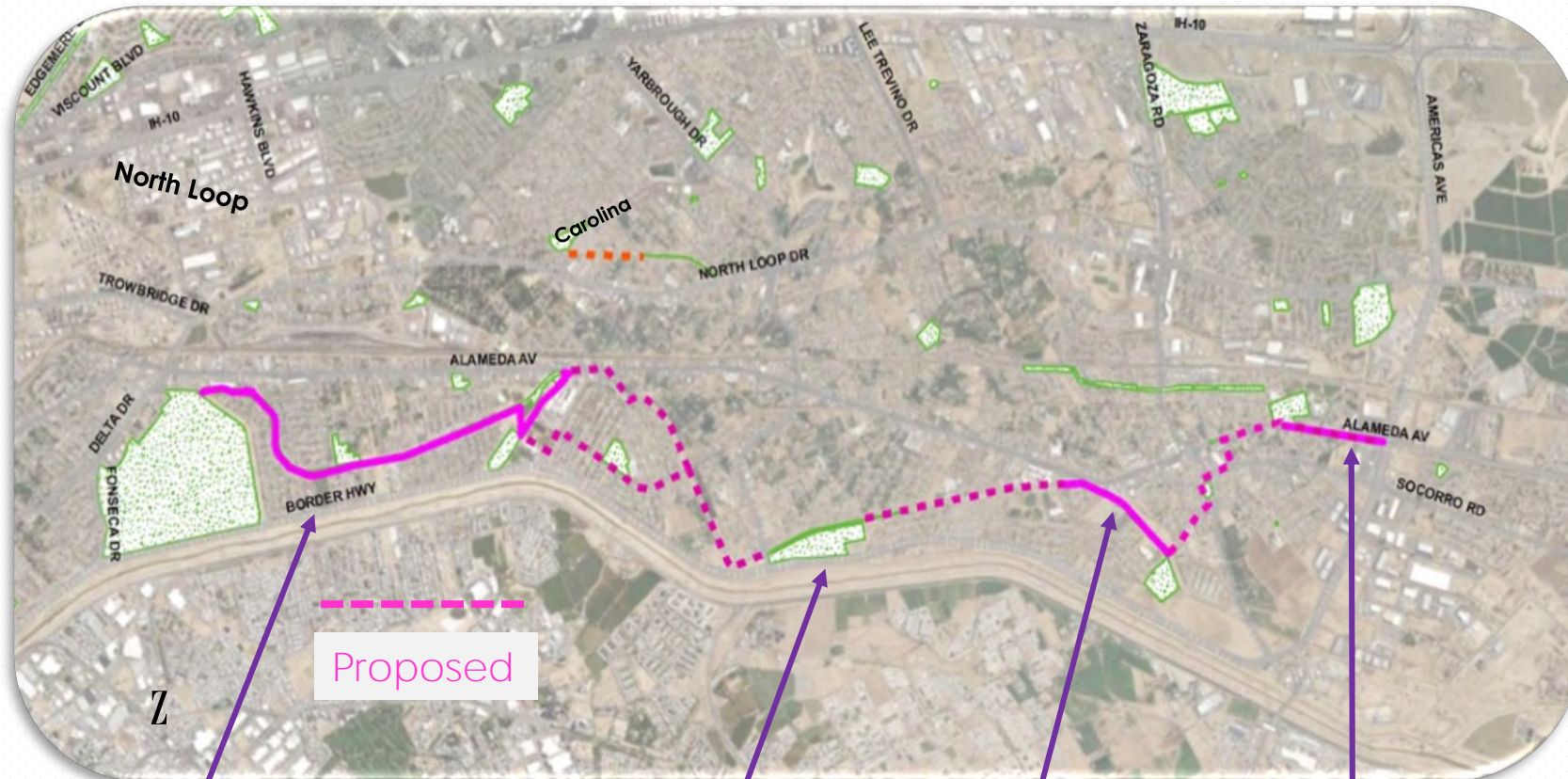
# Paved Trails Programming

Project	District	Budget	FY2019	FY2020+
Playa Drain Ascarate Amenities (V)	3	\$300,000	Complete	
Mountain To River Trail (Design, Construction, Land Acquisition) Natural Surface	1	\$725,000	Design and Construction	
Sunset Terrace Extension	1	\$100,000	Design and Construction	
Sunset Terrace Bridges (W)	1	\$200,000	Predesign	
Tierra Del Este	5	\$355,000	Design and Construction	
Valley Creek (Mary Frances Keisling) Access To River Trail (X)	1	\$81,000	Predesign	
Rio Grande Trail (connect to Country Club Rd.)	1	\$155,000	Predesign	
Westside Community Park Enhancements	1	\$75,000		Programmed
El Paso Electric (EPE) Corridor (Design) Donald To Dyer (Y)	4	\$315,000		TBD
Ellis Lateral (Z)	1	\$315,000		TBD
Carolina To Emerson (El Paso County Water Improvement District 1) (Z)	6	\$342,000		TBD
EPE (D,C) Montana to IH 10 Segment A-D (Y)	3, 5, 6, 7	\$1,750,000		TBD
EPE (D,C) Skyline to Loma Real Segment A-D (Y)	4	\$1,260,000		TBD
V = Paso Del Norte Health Foundation funded construction W = Revisit scope X = Coordination with IBWC and El Paso Water Improvement District #1 Y = Coordination with El Paso Electric Z = Coordination with El Paso County Water Improvement District				

Quality of Life Bond allocated \$6M

# Paved Trails

## Playa Drain and Carolina



PDNHF

TxDOT

CDBG

PDNHF  
TxDOT  
EPCWID1

# Paved Trails



Playa Drain



# Paved Trails

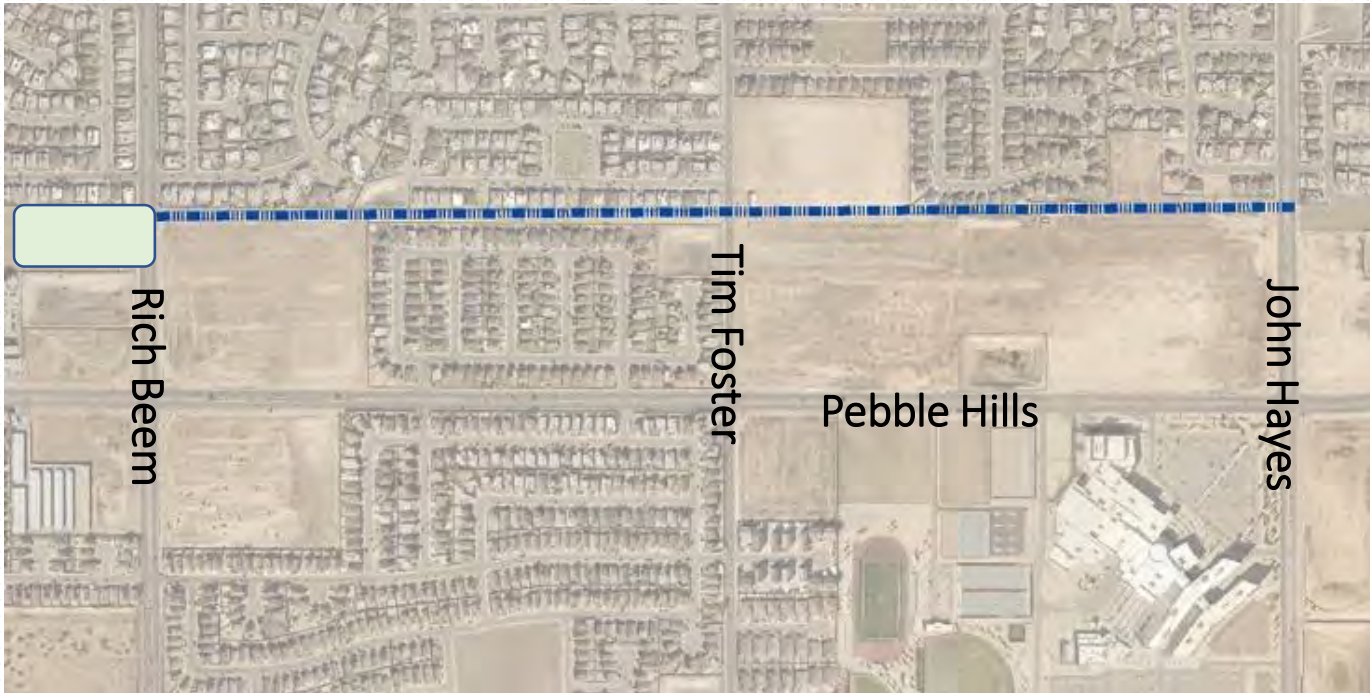


Sunset Terrace

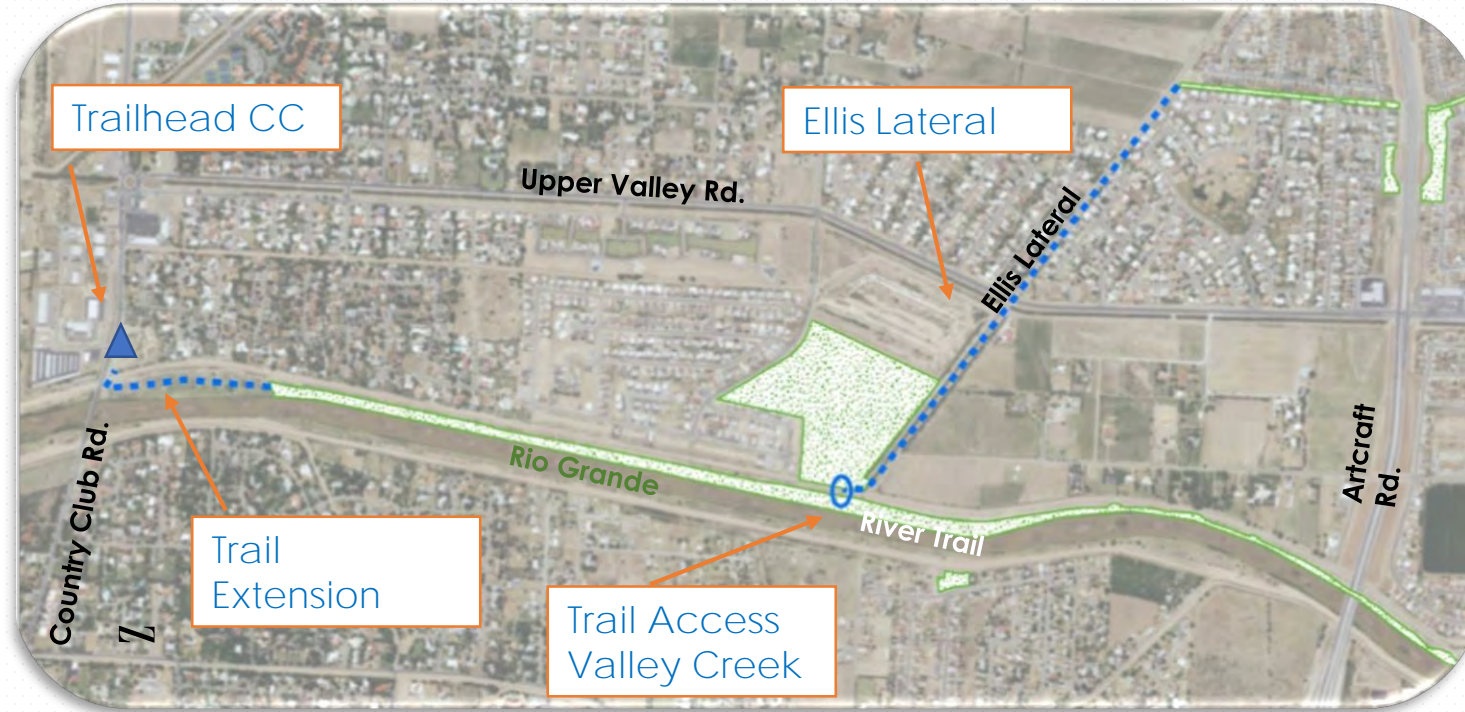


# Paved Trails

Tierra Del Este



# Paved Trails



Rio Grande Trail, Valley Creek, Ellis Lateral

# El Paso Electric Corridors

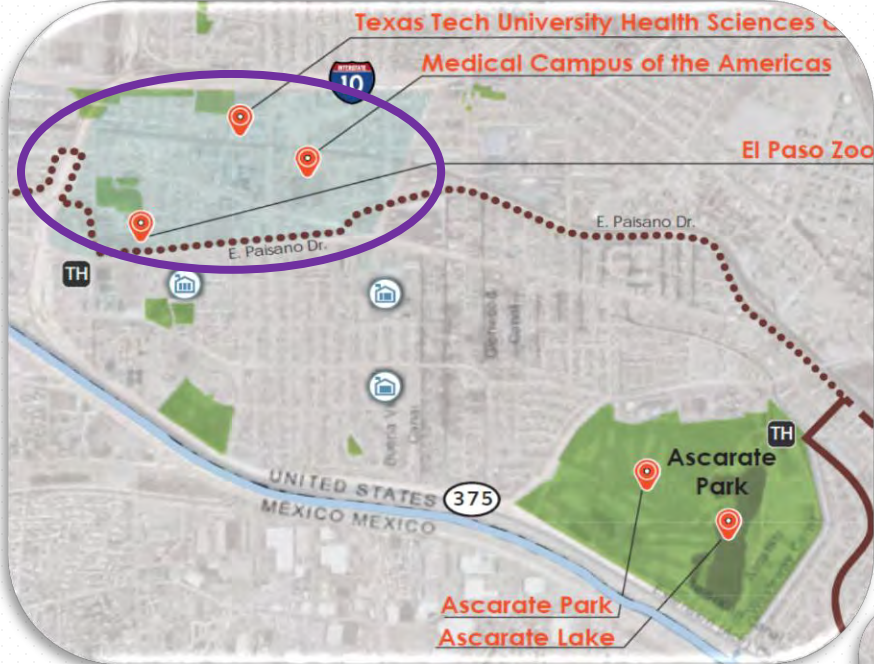


Northeast



East

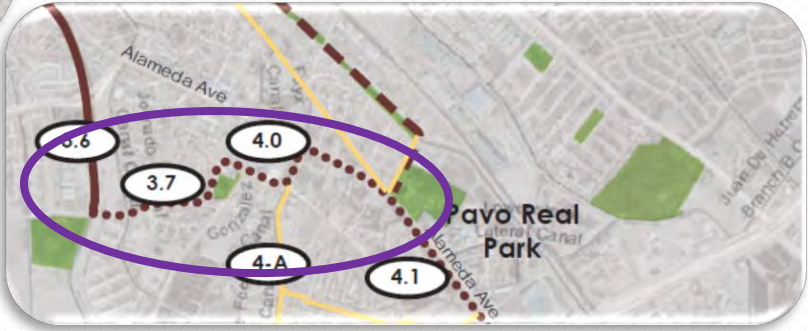
# Opportunities to Leverage Future Projects



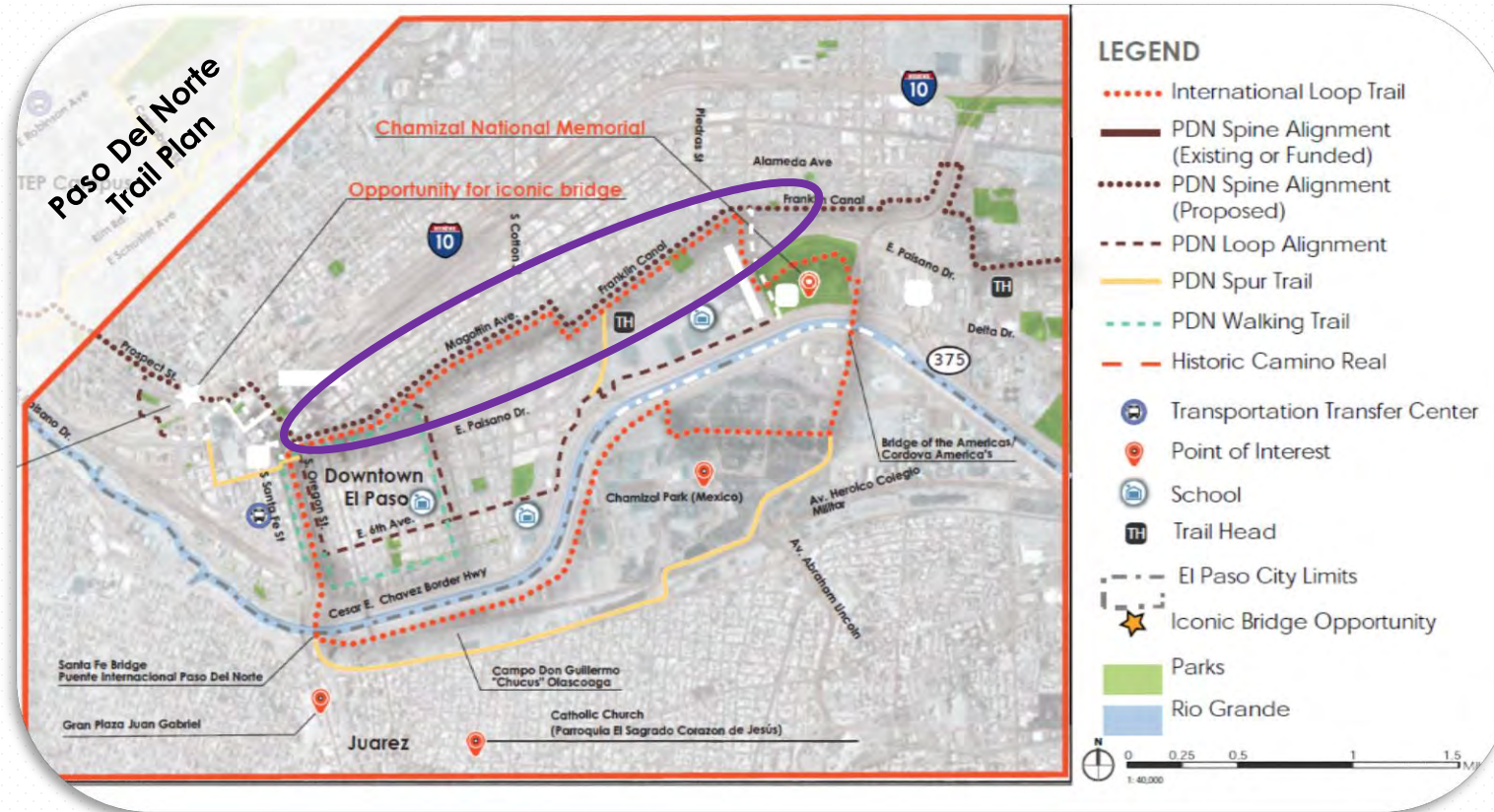
URBAN CONECTIVITY

Zoo - Medical Center - Fox Plaza

Playa Drain / Connect Parks  
Capistrano – Pavo Real



# Opportunities to Leverage Future Projects



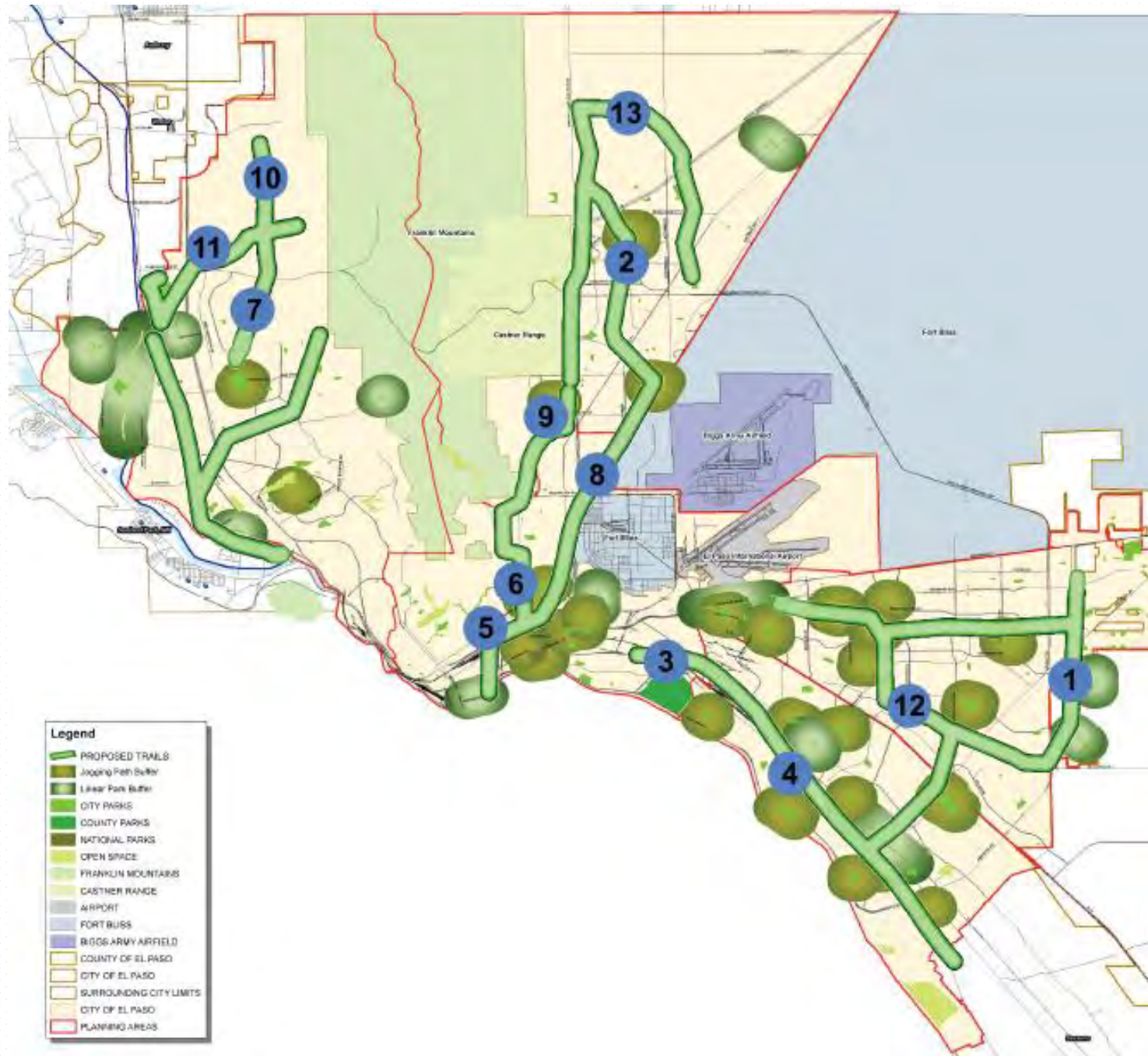
URBAN CONNECTIVITY

Paseo de Las Luces to Chamizal / Bowie HS

POTENTIAL PARTNERS

→ PDN Health Foundation  
 EPCWID1 – Franklin Canal  
 Safe Routes to School  
 National Park Service  
 Others

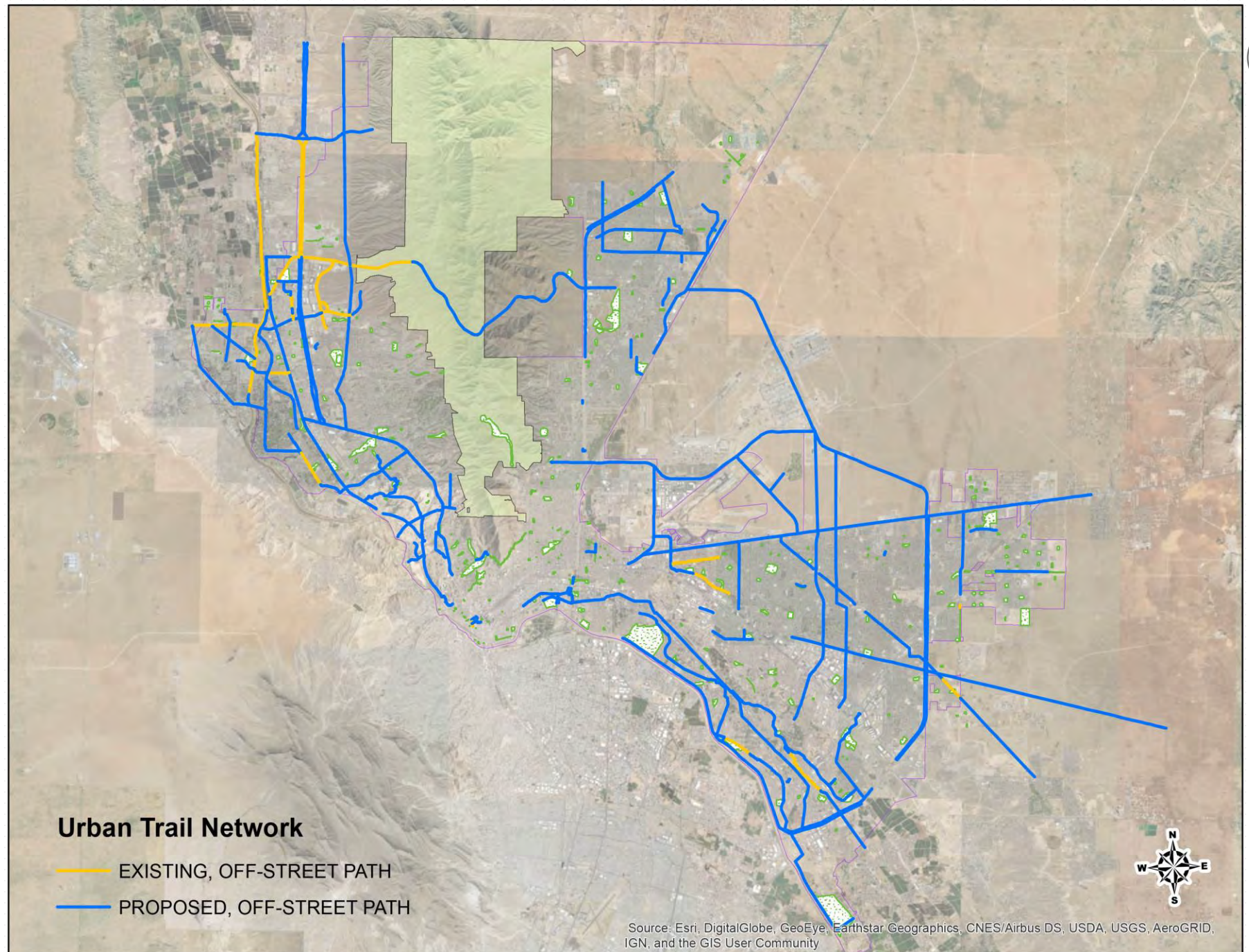
# Trails Element Map (2014)



Source: 2014 Trail Element –  
PARD Master Plan

# Urban Trails

(approved as per 2016 El Paso Bike Plan)



# Additional Connection Opportunities

A semi-transparent map overlay showing a network of green lines and areas, likely representing a trail system or natural surface connections.

- Natural Surface
- Recreational Options
- Transitions to Parks, Schools
- Community Trail Building Opportunities





Thank You

