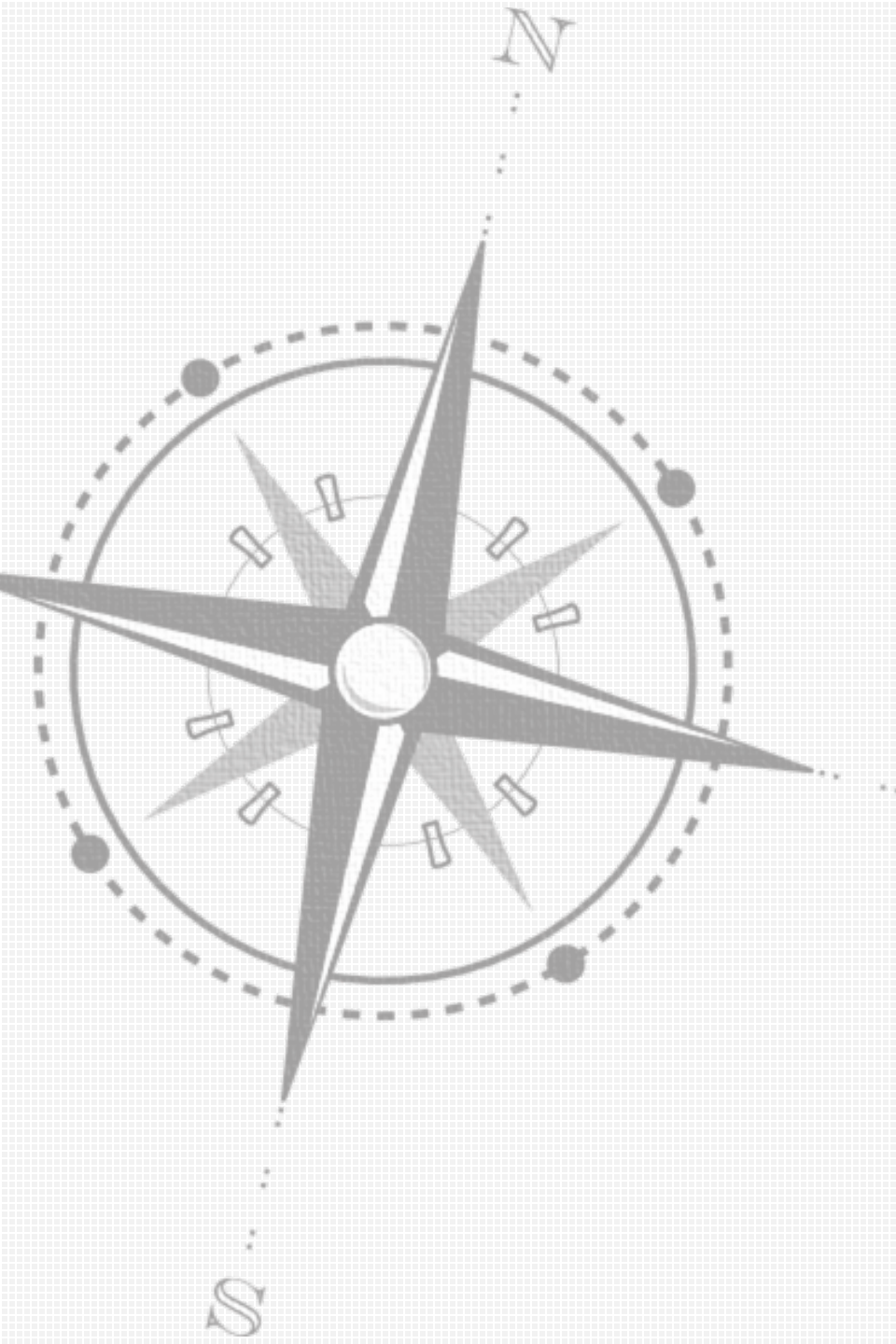


INTERACTIVE MAPS

March 5, 2019



GOALS

GOAL 5

Promote Transparent and Consistent Communication Amongst All Members of the Community

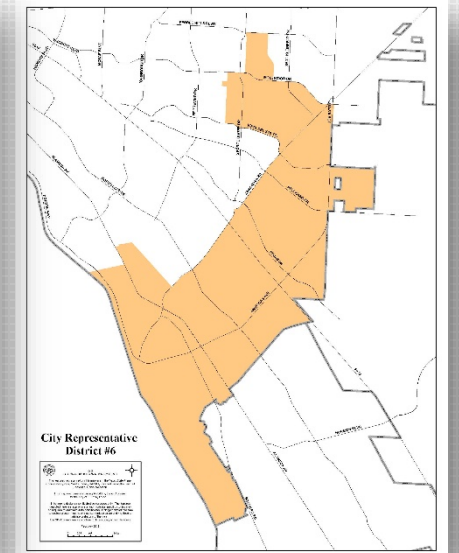
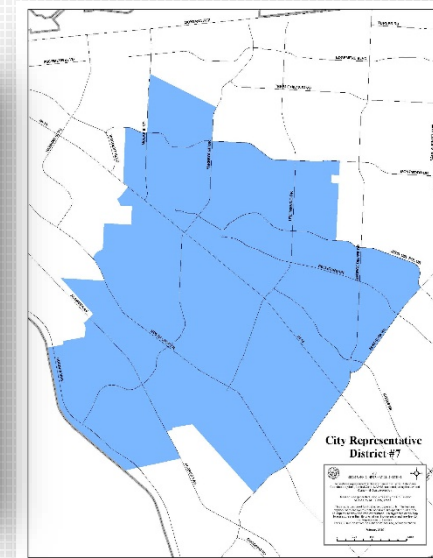
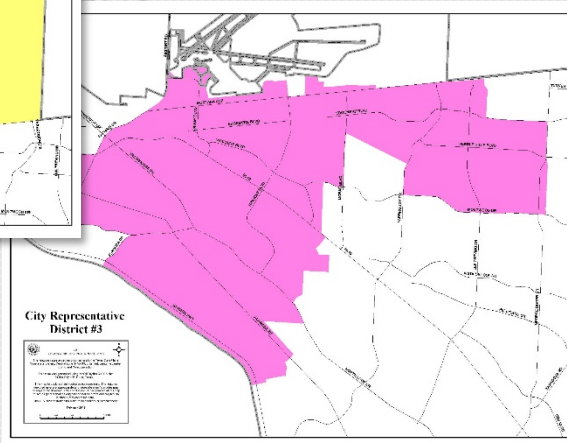
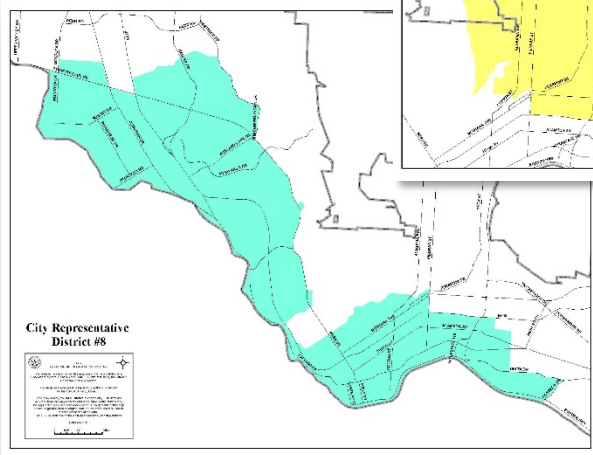
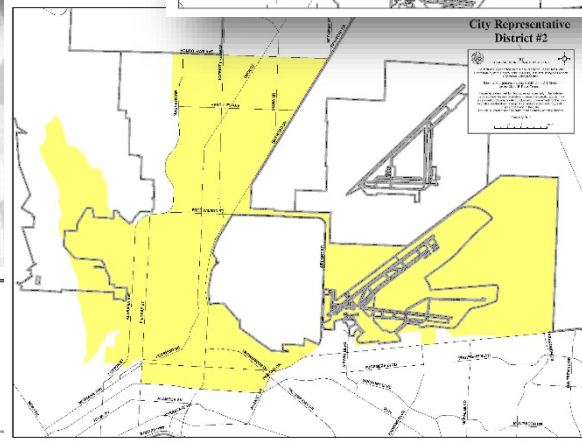
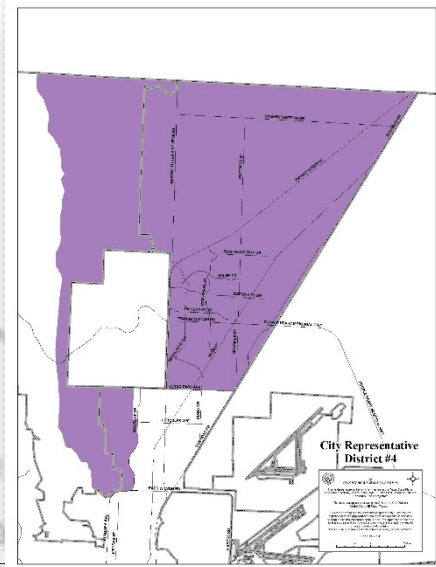
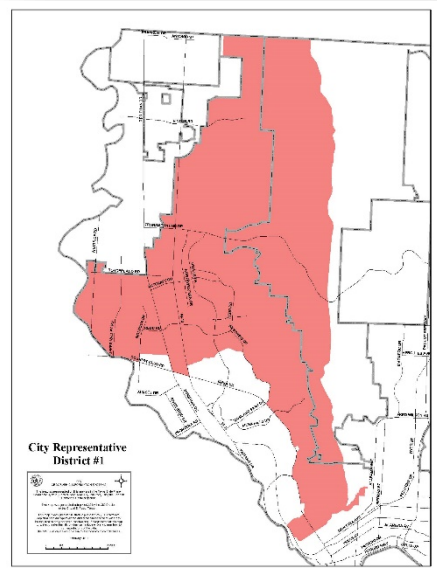
GOAL 6

Set the Standard for Sound Governance and Fiscal Management

INTERACTIVE MAPS

Campaign Development: Districting Maps

- Internal Communication
- Media Accuracy
- Constituency Awareness:
 - What District do I live in?
 - Who is my Representative?
 - How can I get in touch with my Rep.?



INTERACTIVE MAPS

a.k.a., Geographic Information Systems (GIS) Maps

Bike Lanes

City Facilities

City Maintained Streets

Community Gardens

Digital El Paso Wifi

Districting

Economic Development

Empowerment Zone

Flood Zones

Healthy Food Access

Neighborhood Associations

Zoning

Registered Tattoo Body Art Studios

Sex Offenders Residence Ordinance

TIRZ

Trash Collection

Vector Control

West Nile Virus

Franchise Waste Containers

ADA Improvements

Infill Development

Development Incentive Areas

<http://www.elpasotexas.gov/information-technology/public-map-applications>



FEATURED INFORMATION & SERVICES

<p>Quality of Life View Projects</p>	<p>EP Daycation See what to do</p>
<p>Government Meeting Videos</p>	<p>City Council Agendas & Minutes</p>
<p>Open Records Submit Request</p>	<p>EP311 Info & Reporting</p>

THE CITY OF EL PASO TEXAS

Mission: Deliver outstanding service to support a high quality of life for residents, businesses, and visitors.

Vision: El Paso will have safe and beautiful neighborhoods, a vibrant regional economy, and exceptional recreational, cultural, and educational opportunities.

Values: Integrity, Respect, Excellence, Accountability, People

The City's website is here to help you learn about the City government that serves you and to provide information on a variety of services such as how to apply for a job, pay traffic tickets and water bills or to simply find out about events happening in El Paso.

[News](#) | [Press Releases](#) | [Community Meetings](#)

COHEN REIMAGINED

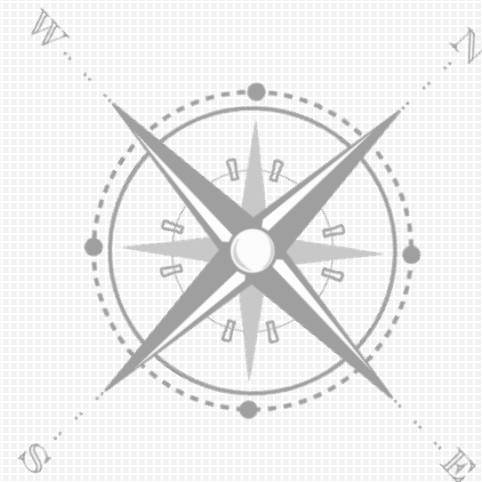
The City of El Paso invites the public to reimagine Cohen by participating in the development of a comprehensive master plan for the Cohen Stadium site in Northeast El Paso. [Read More](#)

[Stay Up-To-Date with All City News](#)

<p>Veteran Resources Benefits & Services available to our Veterans</p>	<p>EMERGENCY ALERT SYSTEM</p>	<p>20 IN 20 EL PASO CITY STRATEGIC PLAN</p>
<p>TITLE VI INFORMATION</p>	<p>INTERACTIVE MAPS</p>	<p>COMMUTER HUB</p>

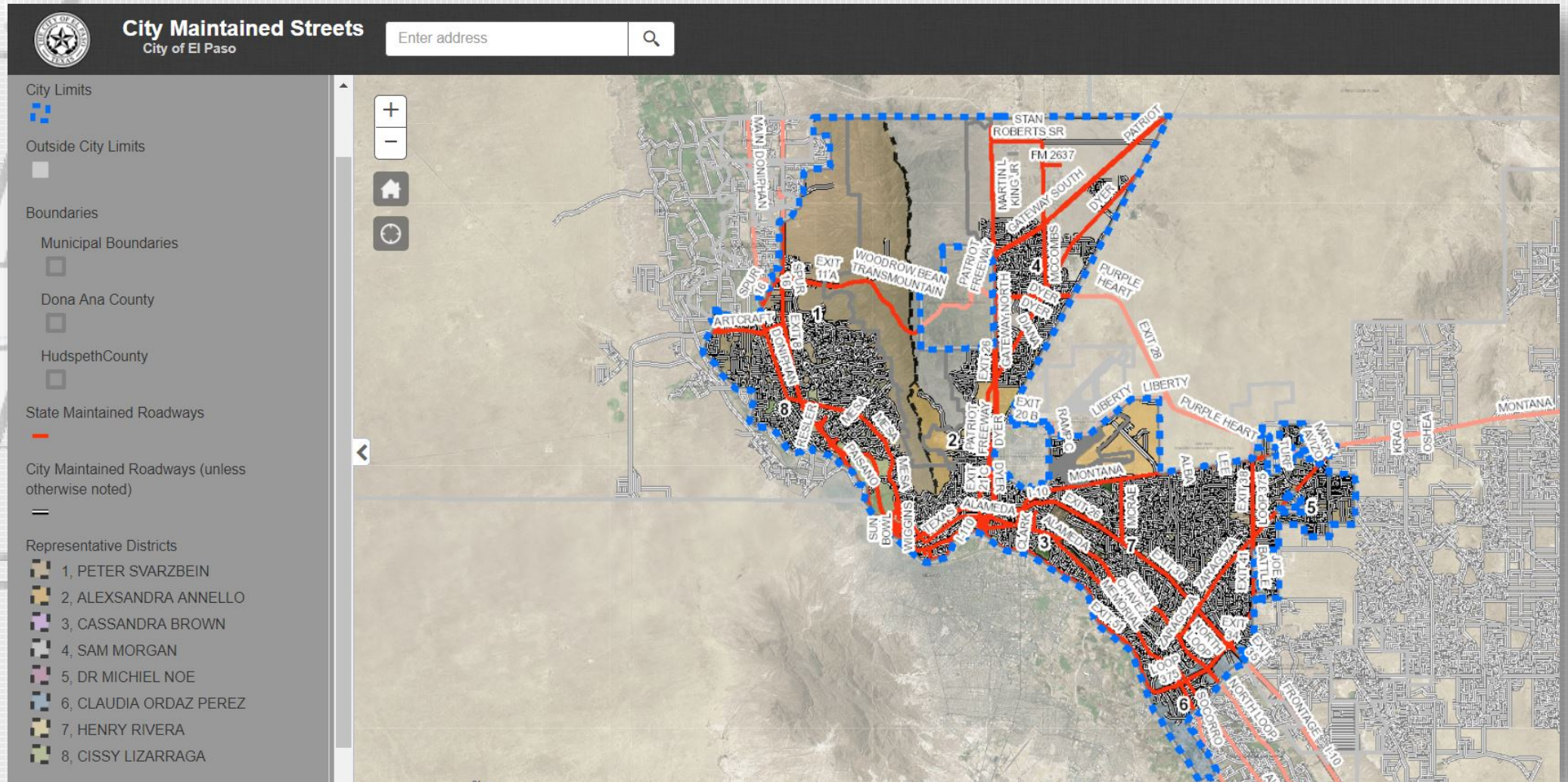
INTERACTIVE MAPS

a.k.a., Geographic Information Systems (GIS) Maps



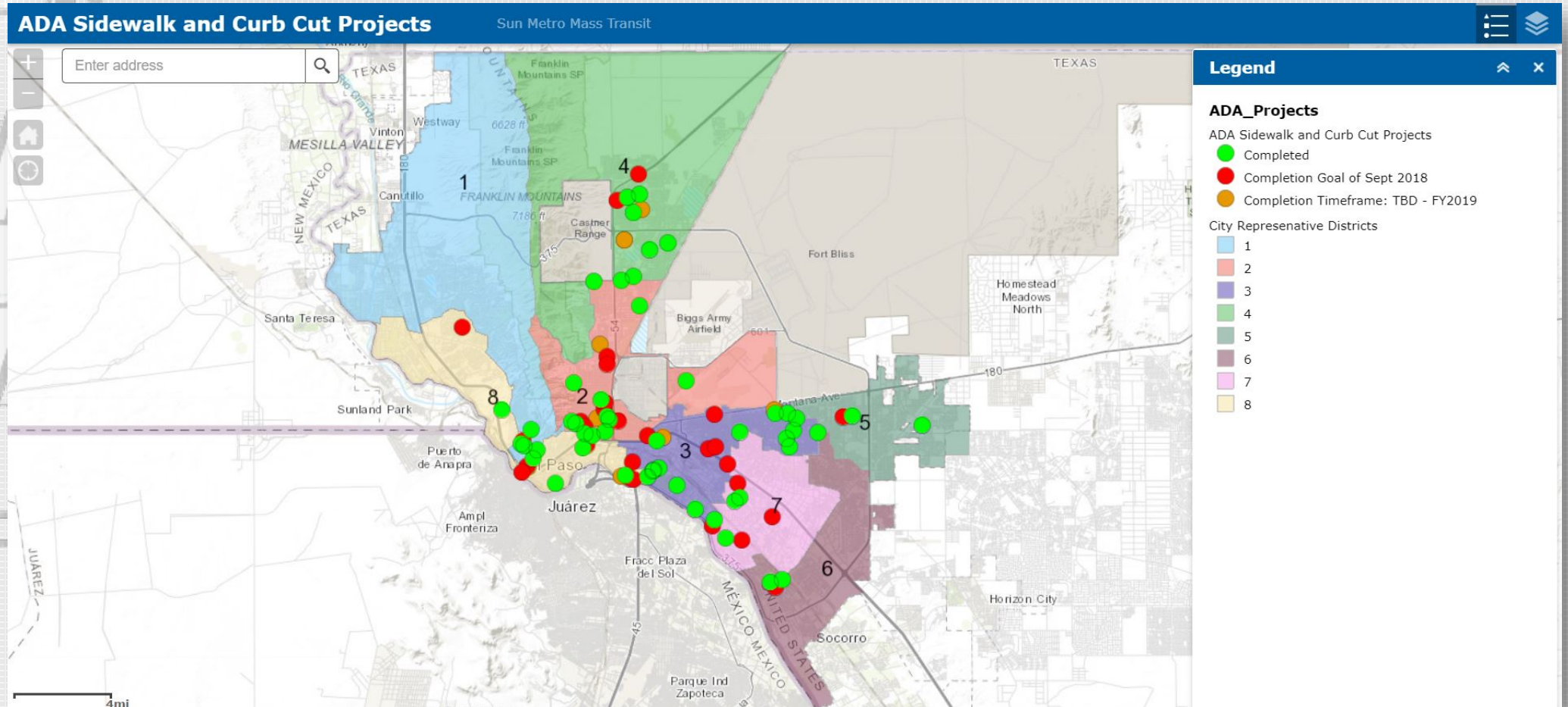
CITY MAINTAINED STREETS

<http://gis.elpasotexas.gov/cityrow/>



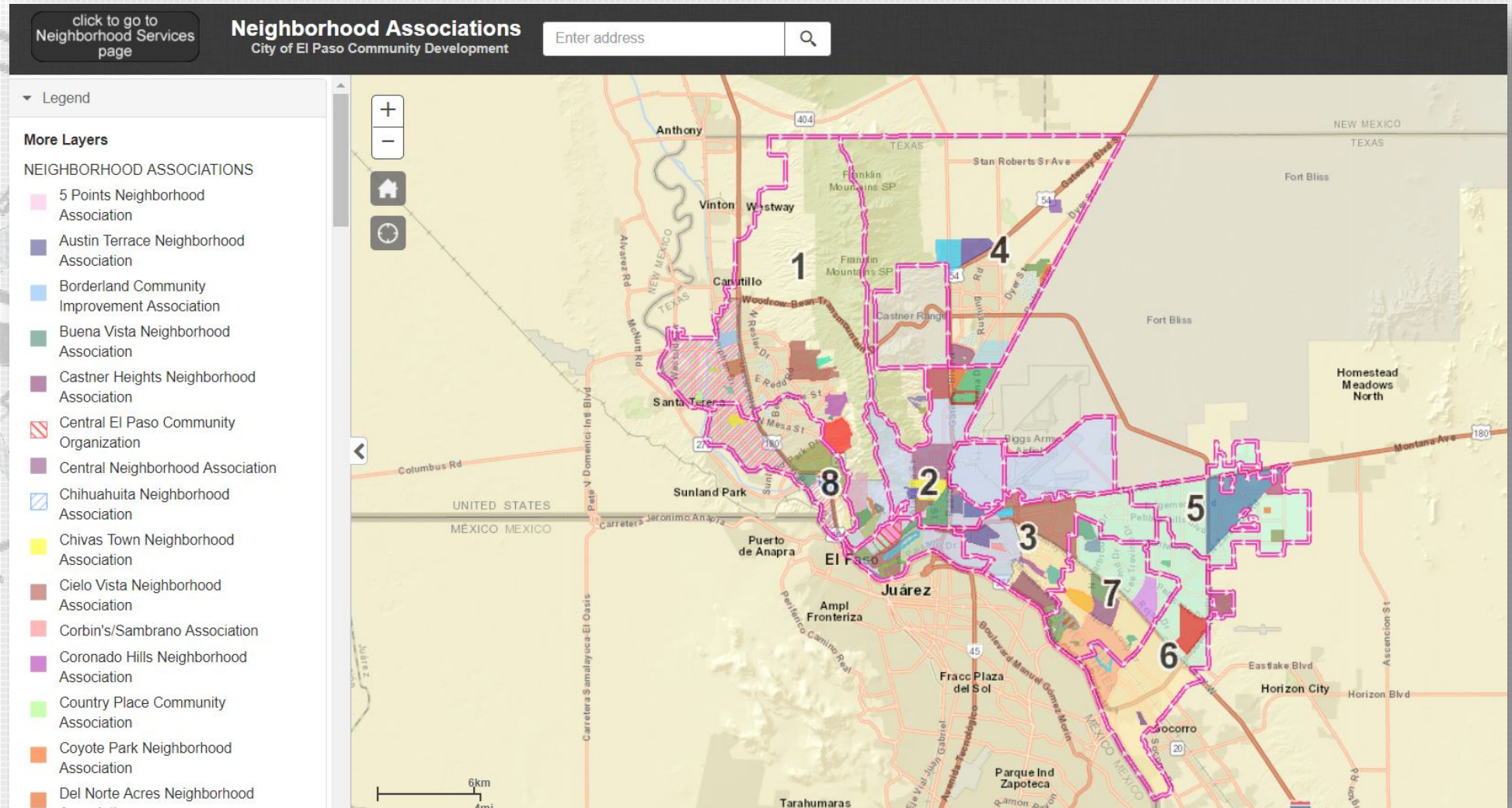
ADA SIDEWALK + CURB CUT PROJECTS

<https://gis.elpasotexas.gov/adaprojects/>



NEIGHBORHOOD ASSOCIATIONS

<http://gis.elpasotexas.gov/neighborhoodassociations/index.html>



VECTOR CONTROL

<http://gis.elpasotexas.gov/fogging/index.html>

Vector Control Regional Activities

City of El Paso Environmental Services

Enter an address or place

Legend

Vector Control

2018 Mosquito Traps



Storm Drains Treatment 2018



Treated and Inspected Areas 2018



Park



Reservoir, Ditch, Culvert, etc.

2018 Fogging Areas



Political Boundaries

City of El Paso Representative Districts



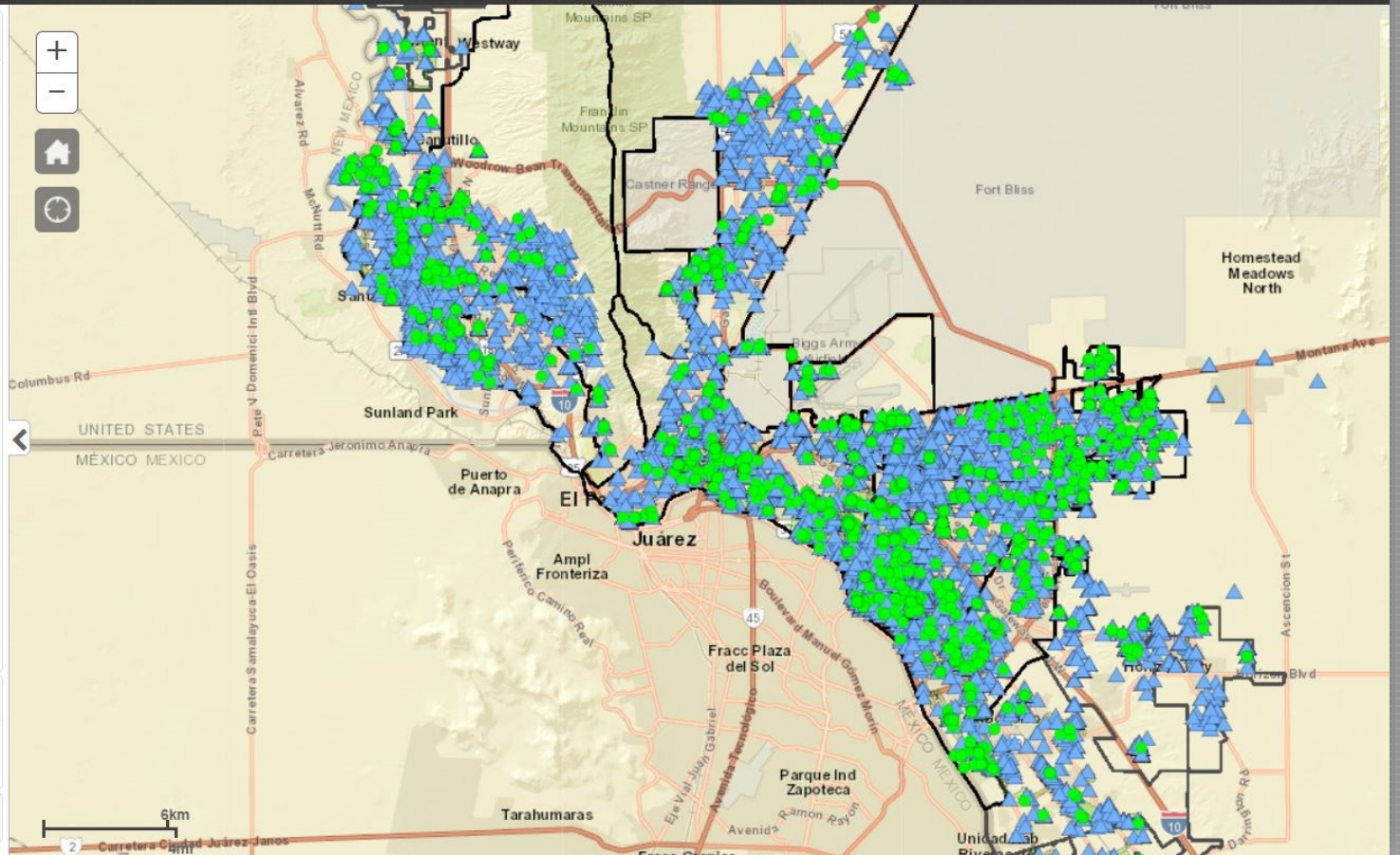
Municipal Boundaries



Layers

Vector Control

Identify



ZONING

<http://gis.elpasotexas.gov/planning/index.html>

The screenshot displays the City of El Paso Zoning GIS application. At the top, the header includes the City of El Paso logo, the title "Zoning", and the "City of El Paso Planning Department". A search bar contains the text "300 N CAMPBELL ST". On the right side of the header, there is a "Help" link and a button labeled "click to see Zoning Table of Permissible Uses".

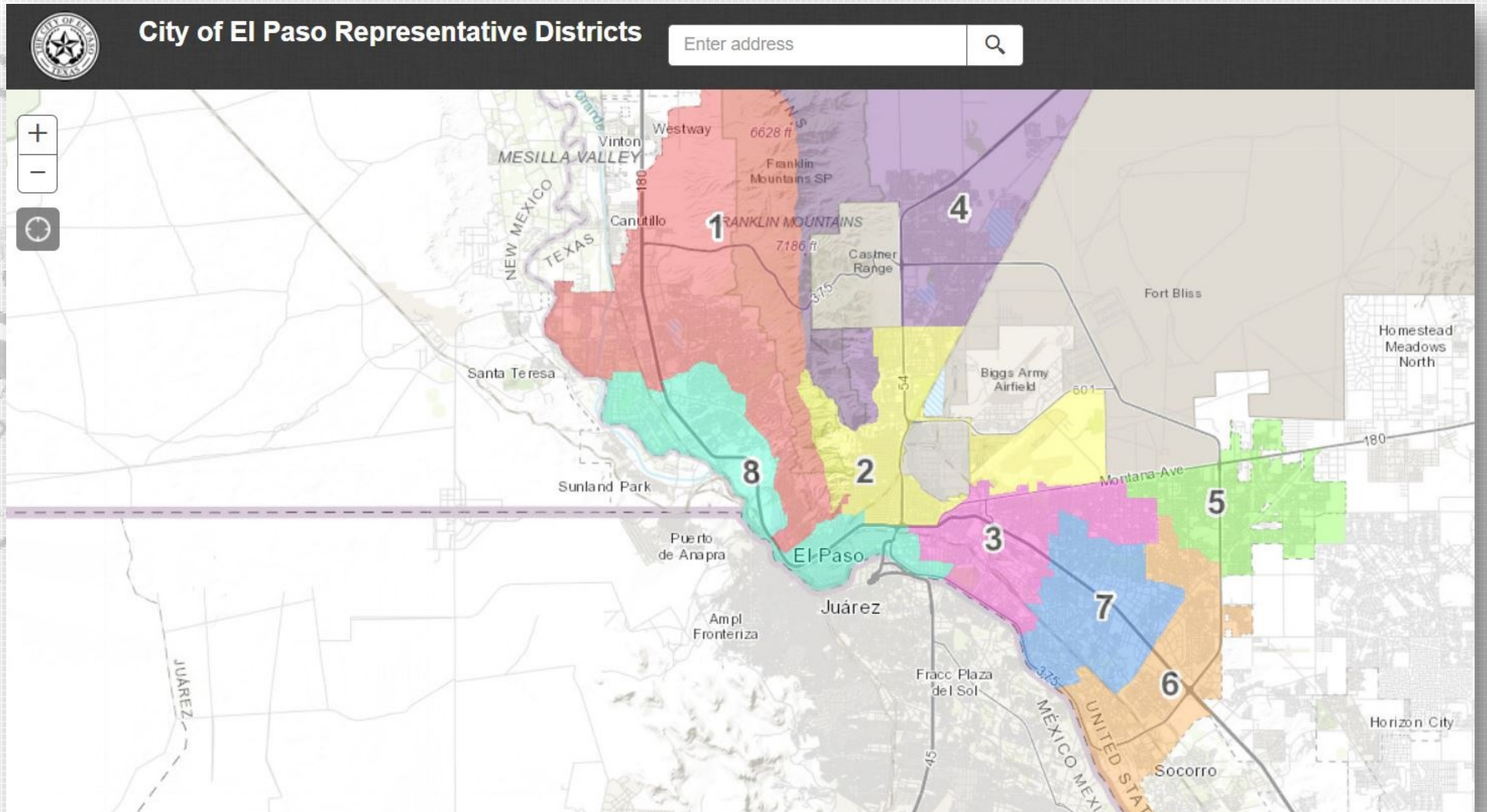
On the left side, there is a "Legend" section and a "Layers" panel. The "Layers" panel lists various data layers with checkboxes and expand/collapse icons:

- Selectable Layers
- LegalNonConforming
- Cell Towers
- Fire Hydrants
- Schools
- Major Arterials
- Zoning Label
- 2010 Census Tracts
- MTP
- Streets
- Bikeways2016
- Building Footprints
- Parks
- Parcels
- NCO
- YDSP Tigua Lands
- El Paso ETJ
- Impact Fee Areas
- Association Boundaries
- Subdivisions
- Historic Districts
- VacantBuildingEnforcementArea
- GeneralLandUse (obsolete)
- FutureLandUse
- Municipal

The main map area shows an aerial view of the El Paso region with various zoning districts highlighted in different colors. Key locations and roads labeled include: SUNLAND PARK, NM; CASTNER RANGE; FORT BLISS; BIGGS ARMY AIRFIELD; AIRPORT (COEP); MONTANA AVE; EDGEMERE BLVD; CITY OF EL PASO; BORDER HWY; NORTH LOOP DR; ALAMEDA AV; CLINT; SAN ELIZARIO; SOCORRO; HORIZON; COUNTY OF EL PASO; HUECO TANKS; Krag; Oshea; Oleary; Socorro's 5 Mile ETJ; El Paso's 5 Mile ETJ; Socorro's 2 Mile ETJ; Horizon's 1 Mile ETJ; Socorro's 1/2 Mile ETJ; San Elizario's 1/2 ETJ; Socorro's 5 Mile ETJ; DARRINGTON RD; ASCENSION; ROJAS DR; JOE BATTLE; ZARAGOZA RD; TROWBRIDGE DR; I-10; MONTWOOD DR; PIEDRAS ST; MAGNETIC DR; PATRIOT FREEWAY; RAILROAD DR; DYER ST; REDD RD; MESA DR; MESA HILLS DR; RIVER BEND DR; RESLER DR; UPPER VALLEY RD; WESTSIDE RD; MONTANOYA DR; COTTON ST; and HORIZON BLVD. A scale bar at the bottom left indicates 6km and 4mi. The map is powered by Esri.

DISTRICTING

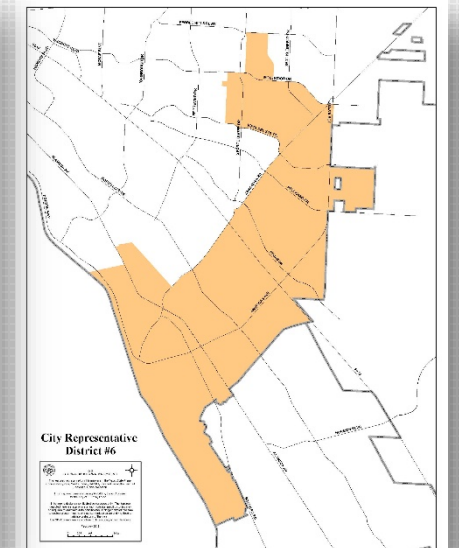
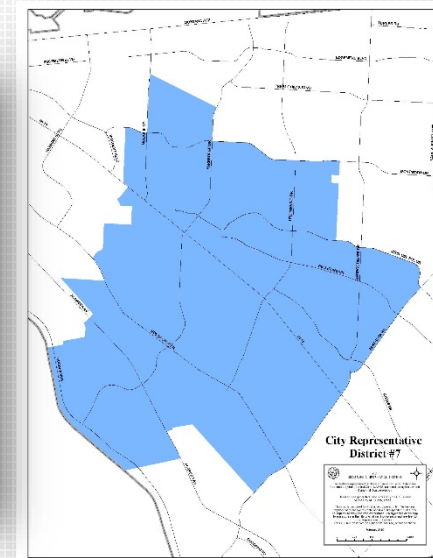
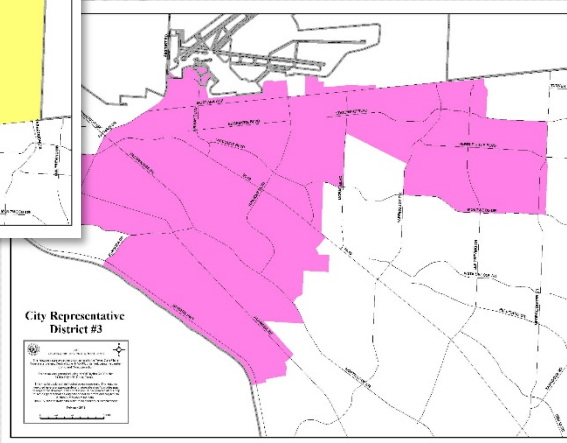
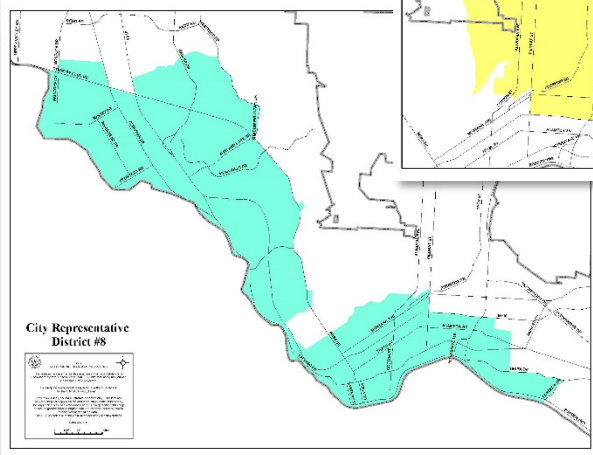
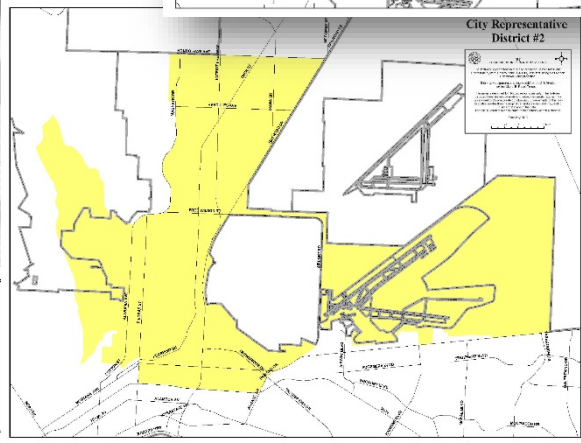
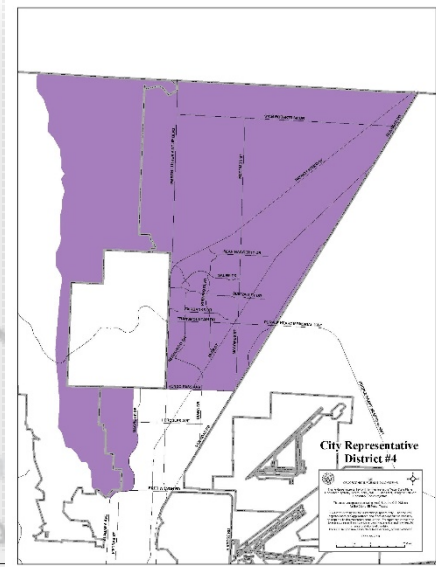
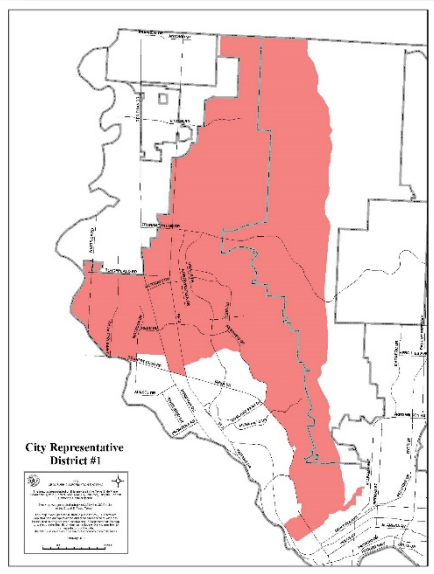
<http://gis.elpasotexas.gov/districting/index.html>



INTERACTIVE MAPS

Campaign Development: Districting Maps

- Internal Communication
- Media Accuracy
- Constituency Awareness:
 - What District do I live in?
 - Who is my Representative?
 - How can I get in touch with my Rep.?



THANK YOU

