



Recommendation/Public Input

- **Planning Division recommendation:** Approval with a condition
- **CPC Vote:** Approval Recommendation (6-0)
- **Public Input:** The Planning Division has not received any communication in support or opposition to the rezoning request.

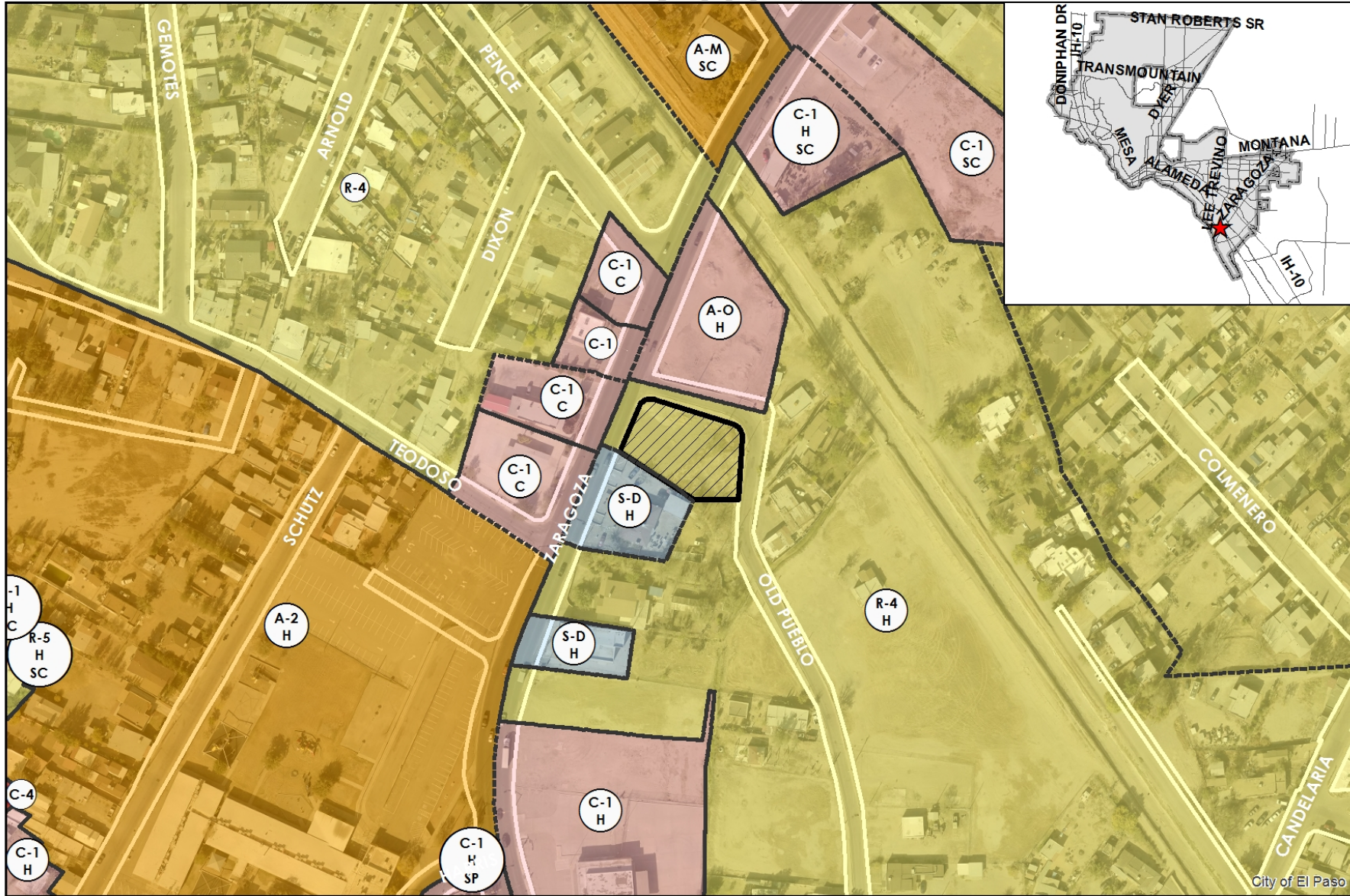
Strategic Goal #3 Promote the Visual Image of El Paso

3.1 Provide business friendly permitting and inspection processes

3.2 Improve the visual impression of the community



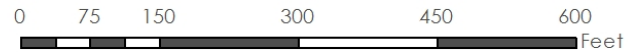
PZRZ18-00029



This map is designed for illustrative purposes only. The features depicted here are approximate and more site-specific studies may be required to draw accurate conclusions. Enlargements of this map to scales greater than its original can induce errors and may lead to misinterpretations of the data. The Planning & Inspections Department Planning Division makes no claim to its accuracy or completeness.



 Subject Property





PZRZ18-00029



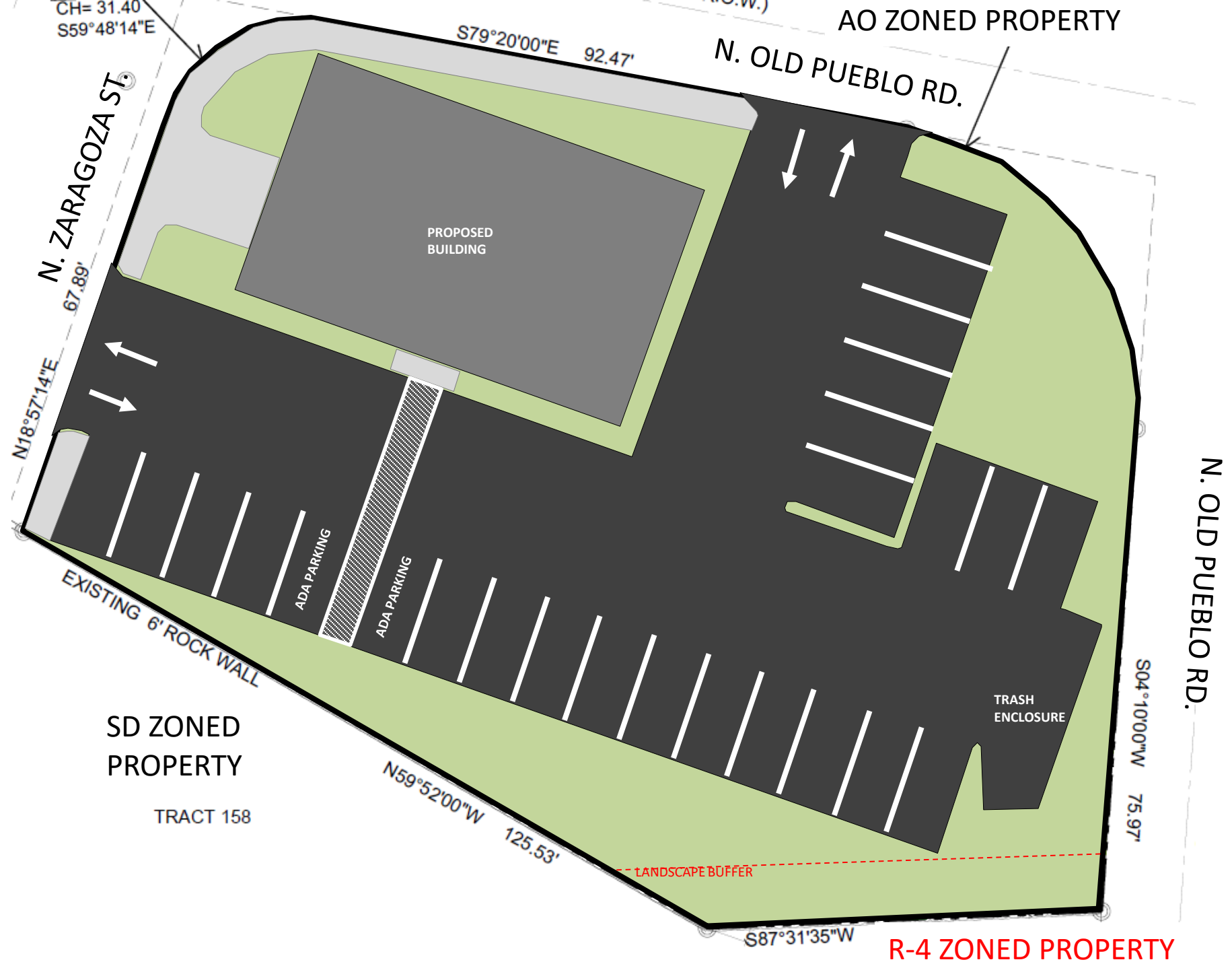
City of El Paso

This map is designed for illustrative purposes only. The features depicted here are approximate and more site-specific studies may be required to draw accurate conclusions. Enlargements of this map to scales greater than its original can induce errors and may lead to misinterpretations of the data. The Planning & Inspections Department Planning Division makes no claim to its accuracy or completeness.



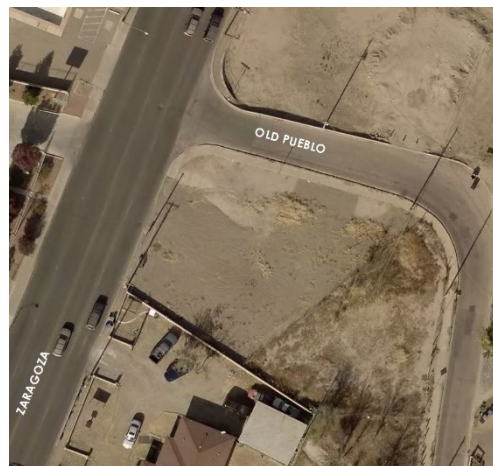


GENERAL CONCEPT PLAN









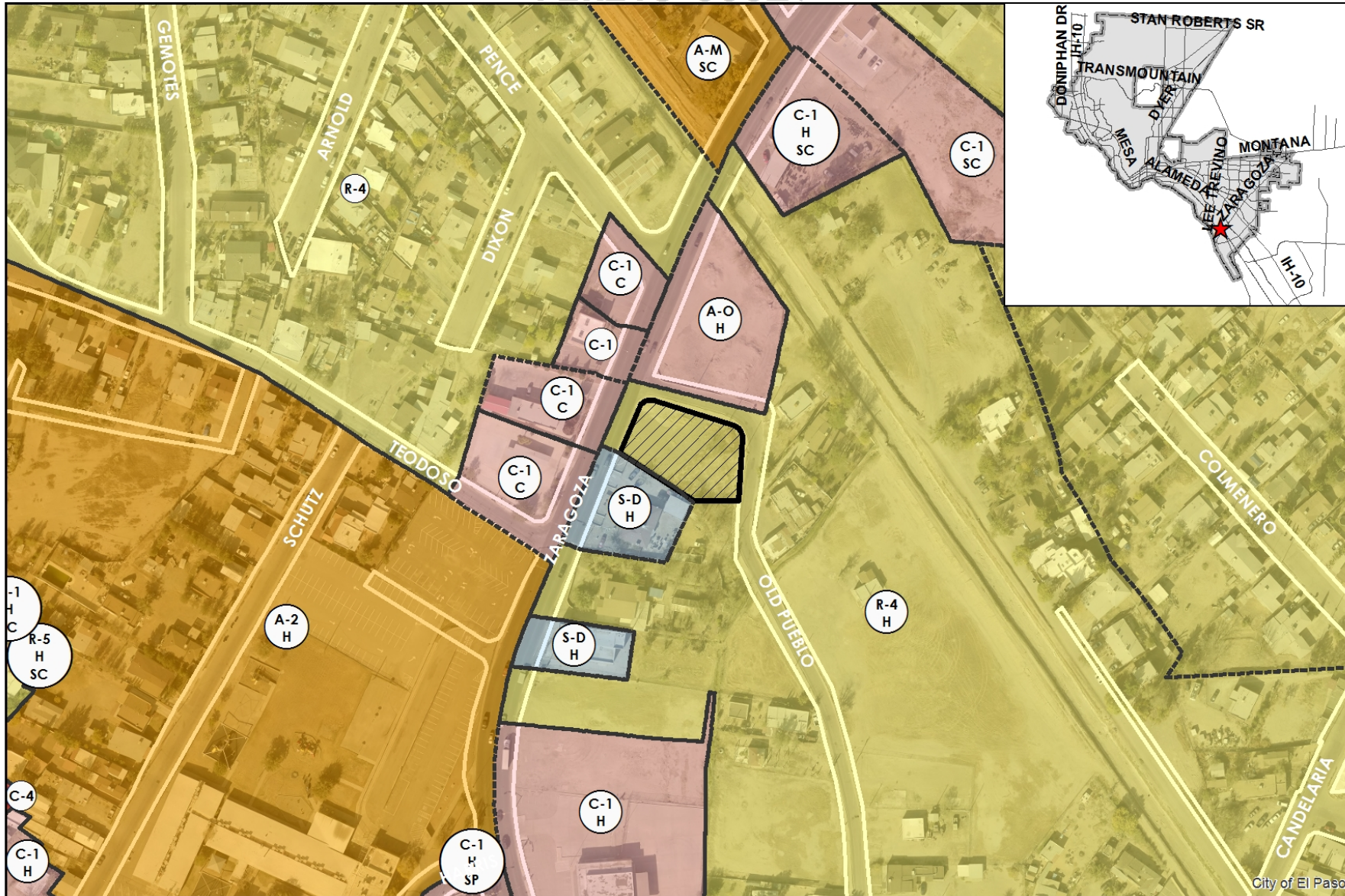


The Planning Division recommends approval of rezoning the subject property from R-4/H (Residential/Historic) to C-1/H (Commercial/Historic) with the following condition:

- 1. A 10' landscaped buffer with high-profile native trees of at least two-inch (2") caliper and ten (10') in height shall be placed at fifteen (15') on center along the property lines adjacent to residential or apartment zone districts or uses. The landscaped buffer shall be irrigated and maintained by the property owner at all times and shall be installed prior to the issuance of any certificates of occupancy; and*



PZRZ18-00029



This map is designed for illustrative purposes only. The features depicted here are approximate and more site-specific studies may be required to draw accurate conclusions. Enlargements of this map to scales greater than its original can induce errors and may lead to misinterpretations of the data. The Planning & Inspections Department Planning Division makes no claim to its accuracy or completeness.



 Subject Property

