



Huckleberry Inbound RTS Station

March 5, 2019



Project Details

Location:	5000 Qutiman Avenue
District(s):	2
Cost:	\$174,634
Funding Source:	FTA and City Approved COs

Project Background

- The Sun Metro Brio transportation option began in 2014 with the introduction of the Mesa corridor. There are a total of four corridors that were initially approved.
- The new system will provide the El Paso community with a faster and more effective mode of transportation.



Recommendations

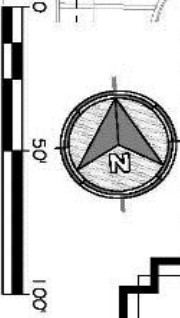
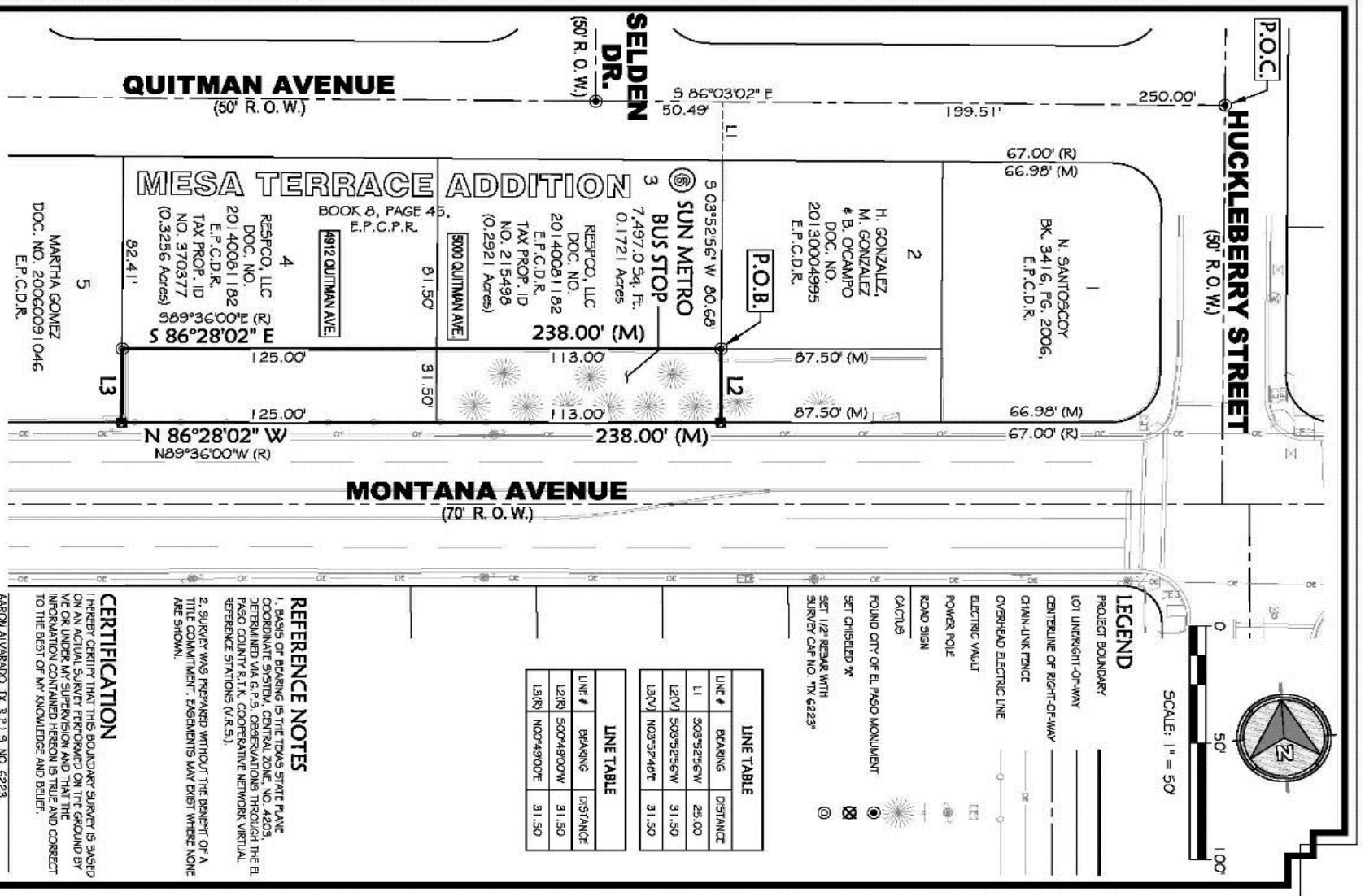
- Authorization to sign an agreement to sign a Contract of Sale between Respcoc, LLC and the City of El Paso for the purchase of .1721 acres of lots 3 and 4, Block 6 Mesa Terrace Addition, to be used for a Sun Metro Transit System Bus Station for the amount of \$174,637.00
- Funding:
 - FTA – 80%
 - City approved Cos – 20%



Project Location

HUCKLEBERRY INBOUND RTS STATION





LEGEND

- PROJECT BOUNDARY
- LOT UNRIGHT-OF-WAY
- CENTERLINE OF RIGHT-OF-WAY
- CHAIN-LINK FENCE
- OVERHEAD ELECTRIC LINE
- ELECTRIC VAULT
- POWER POLE
- ROAD SIGN
- CACTUS
- FOUND CITY OF EL PASO MONUMENT
- SET CHISELED *
SURVEY CAP NO. TX 62225
- SET 1/2 REBAR WITH SURVEY CAP NO. TX 62225

LINE TABLE

LINE #	BEARING	DISTANCE
L1	S03°52'56"W	25.00
L2M	S03°52'56"W	31.50
L3M	N03°57'44"E	31.50

LINE TABLE

LINE #	BEARING	DISTANCE
L2R	S00°49'00"W	31.50
L3R	N00°49'00"E	31.50

REFERENCE NOTES

1. BASIS OF BEARING IS THE TEXAS STATE PLANE COORDINATE SYSTEM, CENTRAL ZONE, NAD83, DEFINED BY THE NATIONAL TRIGONOMETRIC SURVEY OF THE UNITED STATES THROUGH THE EL PASO COUNTY & TEXAS COOPERATIVE NETWORK VERTICAL REFERENCE STATIONS (NARS).
2. SURVEY WAS PREPARED WITHOUT THE BENEFIT OF A TITLE COMMITMENT. ENCUMBRANCES MAY EXIST WHERE NONE ARE SHOWN.

CERTIFICATION

I HEREBY CERTIFY THAT THIS BOUNDARY SURVEY IS BASED ON AN ACTUAL SURVEY PERFORMED ON THE GROUND BY ME OR UNDER MY SUPERVISION AND THAT THE INFORMATION CONTAINED HEREON IS TRUE AND CORRECT TO THE BEST OF MY KNOWLEDGE AND BELIEF.

AARON AYVARADO, TX S.P.L.S. NO. 62223

SUN METRO BUS STOP
"HUCKLEBERRY INBOUND"

DRAWN BY: J.M. CHECKED BY: A.A. DATE: 02-12-2018 SCALE: 1" = 50'

PORTION OF LOTS 3 AND 4, BLOCK 6,
 MESA TERRACE ADDITION,
 CITY OF EL PASO, EL PASO COUNTY, TEXAS.

BROCK & BUSTILLOS INC.

CONSULTING CIVIL ENGINEERS
 LAND SURVEYORS
 LICENSE NO. 1-737
 LICENSE NO. 101314400

417 DECOLINE CENTER-EL PASO, TX 79902-4119 512-542-4800
 FAX (915) 542-2867 -WWW.BROCKBUSTILLOS.COM

REVISED: 03-12-18
 FILE NO: 06880-013

A black and white aerial photograph of a city, likely Phoenix, Arizona, taken from a high vantage point on a hillside. The foreground shows rocky terrain with sparse vegetation. The middle ground is dominated by a large, modern hospital complex with several interconnected buildings and large parking lots filled with cars. The city extends into the distance under a sky filled with dramatic, textured clouds. The text "THANK YOU" is superimposed in large, bold, black capital letters across the center of the image.

THANK YOU