

**CITY OF EL PASO, TEXAS**  
**AGENDA ITEM DEPARTMENT HEAD'S SUMMARY FORM**

**DEPARTMENT:** Parks and Recreation

**AGENDA DATE:** March 7, 2017

**CONTACT PERSON/PHONE:** Tracy Novak, Director (212-1708)

**DISTRICT(S) AFFECTED:** All Districts

**STRATEGIC GOAL:**

Goal 4 - Enhance El Paso's Quality of Life through Recreational, Cultural, and Educational Environments

**SUBJECT:**

Discussion and action to approve a Resolution to revise the prioritized list of the Trail and Trailhead Implementation Plan for the Quality of Life Bond program.

**BACKGROUND / DISCUSSION:**

City staff recommendation is to approve a revised scope of Trail and Trailhead projects funded by the 2012 Quality of Life Bond. City staff has been working with the community to update and revise the existing scope of work for Trail and Trailhead projects. In reviewing the complete lists, several trail and trailhead projects were determined to be no longer applicable due to changing conditions in the field. New trails and trailheads were identified for further study and implementation. Existing trailheads under design require furniture, fixtures, and equipment to fully complete each project.

The Department held community meetings, first with key trail and trailhead stakeholders. The revised prioritized list was presented to the Parks and Recreation Advisory Board, the Open Space Advisory Board, and Bond Oversight Advisory Board who all recommended approval and submittal to City Council.

**PRIOR COUNCIL ACTION:**

October 1, 2013 City Council approved the Trailhead Project Priority List using 2012 Quality of Life Bonds.  
August 9, 2016 City Council approved changes to the prioritized list of Trailhead projects.

**AMOUNT AND SOURCE OF FUNDING:**

2012 Quality of Life Bond by Fiscal Year Allocations, TRAILS- \$600,000/yr, TRAILHEADS - \$200-220,000/yr depending on fiscal year

**BOARD / COMMISSION ACTION:**

November 14, 2016 - Parks and Recreation Advisory Board recommended approval.  
November 14, 2016 - Open Space Advisory Board unanimously recommended approval.  
November 14, 2016 - Bond Overview Advisory Committee unanimously recommended approval.

\*\*\*\*\*REQUIRED AUTHORIZATION\*\*\*\*\*

**LEGAL:** (if required) \_\_\_\_\_ **FINANCE:** (if required) \_\_\_\_\_

**DEPARTMENT HEAD:** \_\_\_\_\_  
*T. Novak*

**APPROVED FOR AGENDA:**

**CITY MANAGER:** \_\_\_\_\_ **DATE:** \_\_\_\_\_

## RESOLUTION

WHEREAS, on October 1, 2013, the City Council of the City of El Paso approved the Trailhead and Trails Project Priority list ("List") using 2012 Quality of Life Bond funds; and

WHEREAS, on August 9, 2016, the City Council of the City of El Paso approved changes to the prioritized list of Trailhead projects; and

WHEREAS, on November 14, 2016 the below-proposed revisions were recommended by the Parks and Recreations Advisory Board; the Open Space Advisory Board; and the Bond Overview Advisory Committee; and

WHEREAS, the City's Parks and Recreation Department is requesting that the scope of work for Trail and Trailhead projects funded by the 2012 Quality of Life Bonds be amended to revise the number, identity, location, scope, amenities, and priority of the trails and trailheads pursuant to Schedule "A" attached hereto.

NOW, THEREFORE, BE IT RESOLVED BY THE CITY COUNCIL OF THE CITY OF EL PASO:

THAT the City's Parks and Recreation Department amend the prioritized list of the Trail and Trailhead Implementation Plan, as set forth on Schedule "A", and to fund such projects under the 2012 Quality of Life Bond.

APPROVED this \_\_\_\_\_ day of \_\_\_\_\_, 2017.

CITY:

\_\_\_\_\_  
Oscar Leeser  
Mayor

ATTEST:

\_\_\_\_\_  
Richarda Duffy Momsen  
City Clerk

APPROVED AS TO FORM:

\_\_\_\_\_  
Juan S. Gonzalez  
Assistant City Attorney

APPROVED AS TO CONTENT:

\_\_\_\_\_  
Paula Powell <sup>for</sup> Tracy Novak  
Tracy Novak, Director  
Parks and Recreation Department

# TRAIL PROJECT RECOMMENDATIONS

## March 2017

Priority	Action/Project	Planning Area	Projected NFW miles	Cost Estimate	Considerations	Map Ref #
	Ascarate to Riverside Parks (PSB stormwater drain)	C/MV	2.5	\$300,000	GRANT- PDNHIF \$850,000 construction; City match \$300,000 A&E. TOTAL PROJECT \$1,150,000	2
New	Mountain to River Trail System – Phase I	NW		64,000	Identify trail corridor, master plan design, and provide overall cost estimate	1
	TDE#52/Rainbow Vista to John Hayes (PARD)	E	1	\$355,000	Connects neighborhood park to next segment of developer-constructed 1mile trail.	3
	Valley Creek Access across IBWC Levee to existing Rio Grande North Trail	NW	0.1	\$81,000	Access from existing VC Park paved parking lot to base of IBWC levee, base of levee to top of the levee, to Rio Grande Trail North.	10
New	Mountain to River Trail System– Phase II	NW	n/a	\$100,000	Land Acquisition, Agreements	1
New	Mountain to River Trail System – Phase III	NW	n/a	\$588,000	Implement trail construction	1
	Rio Grande Trail North, Country Club to just north of Meadow Oaks Street centerline (IBWC plus private)	NW	0.3	\$155,000	GRANT COMPANION. Expands existing RGTN up and over IBWC levee to new parking area. See Trailhead Plan and above for companion projects.	4
	Westside Community Park	NW	n/a	\$75,000	Define existing trails with DG; add mile marker signage not associated w/ 3 Hills Loop.	6
	Montana to I-10 (EPE between Lee Trevino & George Dieter), Segment A	E	1.4	\$437,500	DESIGN OF FULL TRAIL - START CONSTRUCTION. Segment A of 5.5 miles along EP Electric corridor.	7
	Skyline to Loma Real (EPE), Segment A	NE	1	\$315,000	DESIGN OF FULL TRAIL - START CONSTRUCTION. Segment A of 4 miles along EP Electric corridor. Provides a recreational/ alternative transportation amenity in an area that lacks access to parks.	8
	Carolina to Emerson (PSB stormwater drain)	MV	0.5	\$342,000	0.5 mile, connects existing 0.5 mi trail to Public Housing & Park along PSB Stormwater	9
	Ellis Lateral Trail to Valley Creek Park (WC Irrigation District #1)	NW	1	\$315,000	1 mile of trail along WCID#1 creates a 1.7 mile trail connection to the Rio Grande Trail North.	10
	Sunset Terrace Trail Extension	NW	0.2	\$100,000	0.2 mi of trail	11
	Sunset Terrace Trail Bridges	NW	n/a	\$200,000	Installation of 2 bridges crossing arroyos, connecting 1.2 miles of trail from Antcraft to the Westside Sports Complex	11
	Donald to Dyer (EPE)	NE	1	\$315,000	1 mile west-east along EP Electric corridor. Provides a recreational/ alternative transportation amenity in an area that lacks access to parks.	8
	Montana to I-10 (EPE between Lee Trevino & George Dieter), Segment B	E	1.4	\$437,500	Segment B of 5.5 miles along EP Electric corridor.	7
	Skyline to Loma Real (EPE), Segment B	NE	1	\$315,000	Segment B of 4 miles along EP Electric corridor. Provides a recreational/ alternative transportation amenity in an area that lacks access to parks.	8
	Montana to I-10 (EPE between Lee Trevino & George Dieter), Segment C	E	1.4	\$437,500	Segment C of 5.5 miles along EP Electric corridor.	7
	Skyline to Loma Real (EPE), Segment C	NE	1	\$315,000	Segment C of 4 miles along EP Electric corridor. Provides a recreational/ alternative transportation amenity in an area that lacks access to parks.	8
	Montana to I-10 (EPE between Lee Trevino & George Dieter), Segment D	E	1.4	\$437,500	Segment D of 5.5 miles along EP Electric corridor.	7
	Skyline to Loma Real (EPE), Segment D	NE	1	\$315,000	Segment D of 4 miles along EP Electric corridor. Provides a recreational/ alternative transportation amenity in an area that lacks access to parks.	8
TOTAL			16.2	\$6,000,000		

## TRAILHEAD PROJECT RECOMMENDATIONS

Priority	Action/Project	Planning Area	Cost Estimate	Considerations	Map Ref #
	Lazy Cow	NE	\$125,000	Expand scope to allow for full trailhead, including: parking area, landscaping, signage, access control, solar picnic table, and shade.	A
	Roundhouse Trailhead	NE	\$125,000	Expand scope to allow for full trailhead, including: parking area, landscaping, signage, access control, solar picnic table, and shade.	B
	Thousand Steps	NW	\$125,000	Expand scope to allow for full trailhead, including: parking area, landscaping, signage, access control, solar picnic table, and shade.	C
	Thunderbird	NW	\$125,000	Expand scope to allow for full trailhead, including: parking area, landscaping, signage, access control, solar picnic table, shade, and bridge.	D
	Chuck Heinrich	NE	\$14,300	Main Trailhead sign, 1 trash receptacle, 1 Mutt-mitt, 2 benches, arrow signs to FMSP	E
	Redd Rd/ Lost Dog	NW	\$2,100	Ped/bike Bollard, arrow signs to FMSP	F
	Architectural and Engineering	NE/NW	\$83,600	Provide architectural and engineering for all trailhead projects	
	Furniture, Fixtures and Equipment	NE/NW	\$100,000	Provide solar table, trees, and restroom enclosures.	
Subtotal			\$700,000		
	Palisades- Land Acquisition	C	unknown	Per preliminary PSB design plans, PARD might need land acquisition to complete recreational improvements. If rec improvement design can fit onto PSB footprint determined by 60% design (Nov 2013), then no additional land acquisition is needed.	H
	Palisades	C	\$300,000	Clear & grub approximately 1 acre, +/-16 parking spaces , traffic controlling bollards, educational kiosks/ signage, rock retaining walls, 1 Mutt- mitt, 2 trash receptacles, 4 benches, landscaping, arrow signs to FMSP.	H
	Thunderbird - Phase II	NW	\$133,450	Clear & grub 0.7ac , 10 parking spaces.	D
NEW	Franklin Hills (Bear Ridge)	NW	\$125,000	Clear & grub approximately 1 acre, 14 parking spaces, paved jogging path, Main Trailhead sign, 1 Mutt-mitt, 2 trash receptacles, 4 benches, landscaping.	G
	Country Club Trailhead - Land Acquisition	NW	\$29,000	Approximate purchase price of 0.6 acres. See Trails Plan for companion project.	I
	Country Club Trailhead	NW	\$125,000	Clear & grub 0.6acres, 14 paved parking spaces, Main Trailhead sign, 1 Mutt-mitt, 1 trash receptacle, 2 benches (Similar to C-H parking). See Trails Plan for companion	I
NEW	Mountain to River Trailhead	NW	\$125,000	See trails plan for companion project.	J
	North Open Space Reserve	NE	\$14,300	Potential Eagle Scout/Volunteer project. Location 2nd Tier TH. Site clearing/cleanup by volunteers. Main Trailhead sign, 1 trash receptacle, 1 Mutt-mitt, 2 benches, arrow signs to FMSP	L
TOTAL			\$1,551,750		



# CITY OF EL PASO

# **TRAIL AND TRAILHEAD PLAN - UPDATE**

*"Delivering Outstanding Services"*



## **City of El Paso Strategic Plan**

### **STRATEGIC GOAL 4: Enhance El Paso's Quality of Life through Recreational, Cultural and Educational Environments**



## QOL Bond Program 8-Year Plan

District	PROJECT	PROGRAM BUDGET	2014	2015	2016	2017	2018	2019	2020	2021	2022	2023	TOTAL ALLOCATION
CW	Paved Trails	\$ 6,000,000	\$ 600,000	\$ 600,000	\$ 600,000	\$ 600,000	\$ 600,000	\$ 600,000	\$ 600,000	\$ 600,000	\$ 600,000	\$ 600,000	\$ 6,000,000
CW	Trail Head Parking Areas	\$ 2,000,000	\$ 200,000	\$ 200,000	\$ 200,000	\$ 187,500	\$ 187,500	\$ 187,500	\$ 187,500	\$ 215,000	\$ 215,000	\$ 220,000	\$ 2,000,000

- **Trail Funding Currently Available - \$2.4 million**
- **Trailhead Funding Currently Available - \$787,500**

*“Delivering Outstanding Services”*



# Update to Trailhead Plan

## Prior Actions:

- On April 11, 2012, PSB took action approving the concepts for right of entry to trailheads to the Franklin Mountain State Park.
- On July 11, 2012, PSB took action to approve a Resolution in support of the City's use of EPWU/PSB owned, managed or controlled easements and right-of-ways for Trailhead access by citizens to Franklin Mountain State Park.
- On November 9, 2016, PSB took action approving the revised Trailhead List to include the Lazy Cow and Round House trailheads.





# Update to Trailhead Plan

## Recent Action:

- On August 9, 2016, the City of El Paso City Council took action to update the list of trailhead projects, amending it to include additional trailheads and remove others.
- Several boards and commissions, including the Parks and Recreation Board, Open Space Board, and Bond Advisory Oversight Committee also recommended the changes.
- Four Community Meetings held to accept input into trailhead design. Recommendations to enhance with solar tables, trees, and portable restroom enclosures.



## Solar table at night



*"Delivering Outstanding Services"*



## Trailhead Update - Summary

- Mountain to River Trailhead
- Franklin Ridge (Bear Ridge) Trailhead
- Added amenities to prioritized trailheads based on community input



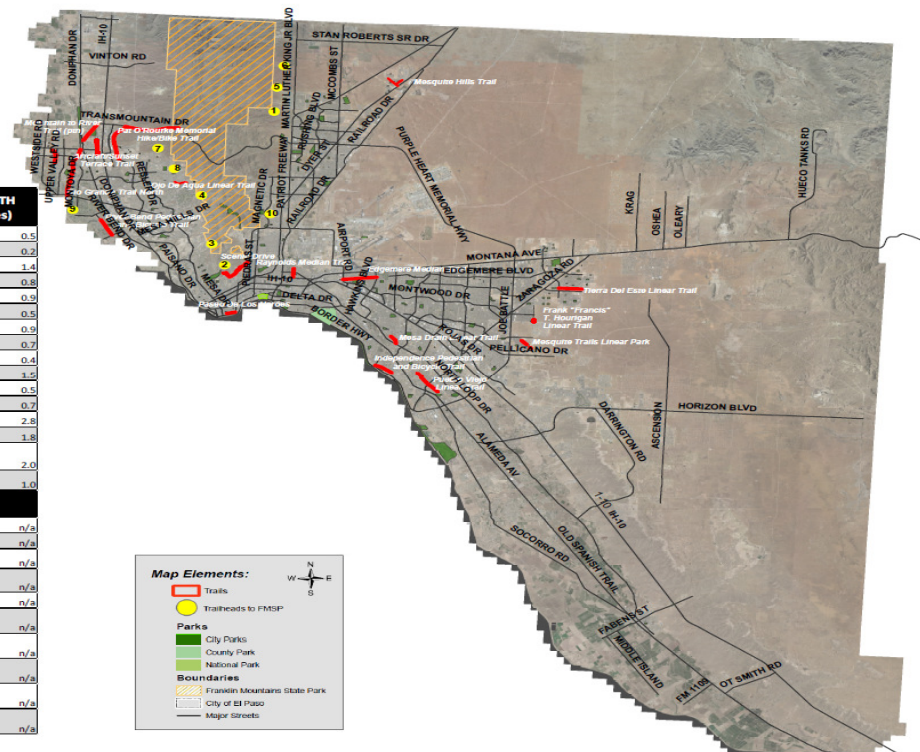
## TRAILHEAD PROJECT RECOMMENDATIONS March 2017

Priority	Action/Project	Planning Area	Cost Estimate	Considerations	Map Ref #
	Lazy Cow	NE	\$125,000	Expand scope to allow for full trailhead, including: parking area, landscaping, signage, access control, solar picnic table, and shade.	A
	Roundhouse Trailhead	NE	\$125,000	Expand scope to allow for full trailhead, including: parking area, landscaping, signage, access control, solar picnic table, and shade.	B
	Thousand Steps	NW	\$125,000	Expand scope to allow for full trailhead, including: parking area, landscaping, signage, access control, solar picnic table, and shade.	C
	Thunderbird	NW	\$125,000	Expand scope to allow for full trailhead, including: parking area, landscaping, signage, access control, solar picnic table, shade, and bridge.	D
	Chuck Heinrich	NE	\$14,300	Main Trailhead sign, 1 trash receptacle, 1 Mutt-mitt, 2 benches, arrow signs to FMSP	E
	Redd Rd/ Lost Dog	NW	\$2,100	Ped/bike Bollard, arrow signs to FMSP	F
	Architectural and Engineering	NE/NW	\$83,600	Provide architectural and engineering for all trailhead projects	
	Furniture, Fixtures and Equipment	NE/NW	\$100,000	Provide solar table, trees, and restroom enclosures.	
	<b>Subtotal</b>		<b>\$700,000</b>		
	Palisades- Land Acquisition	C	unknown	Per preliminary PSB design plans, PARD might need land acquisition to complete recreational improvements. If rec improvement design can fit onto PSB footprint determined by 60% design (Nov 2013), then no additional land acquisition is	H
	Palisades	C	\$300,000	Clear & grub approximately 1 acre, +/-16 parking spaces, traffic controlling bollards, educational kiosks/ signage, rock retaining walls, 1 Mutt- mitt, 2 trash receptacles, 4 benches, landscaping, arrow signs to FMSP.	H
	Thunderbird - Phase II	NW	\$133,450	Clear & grub 0.7ac., 10 parking spaces.	D
	Franklin Hills (Bear Ridge)	NW	\$125,000	Clear & grub approximately 1 acre, 14 parking spaces, paved jogging path, Main Trailhead sign, 1 Mutt-mitt, 2 trash receptacles, 4 benches, landscaping.	G
NEW	Country Club Trailhead - Land Acquisition	NW	\$29,000	Approximate purchase price of 0.6 acres. See Trails Plan for companion project.	I
	Country Club Trailhead	NW	\$125,000	Clear & grub 0.6acres, 14 paved parking spaces, Main Trailhead sign, 1 Mutt-mitt, 1 trash receptacle, 2 benches (Similar to C-H parking). See Trails Plan for companion	I
NEW	Mountain to River Trailhead	NW	\$125,000	See trails plan for companion project.	J
	North Open Space Reserve	NE	\$14,300	Potential Eagle Scout/Volunteer project. Location 2nd Tier TH. Site clearing/cleanup by volunteers. Main Trailhead sign, 1 trash receptacle, 1 Mutt-mitt, 2 benches, arrow signs to FMSP	L
	<b>TOTAL</b>		<b>\$1,551,750</b>		



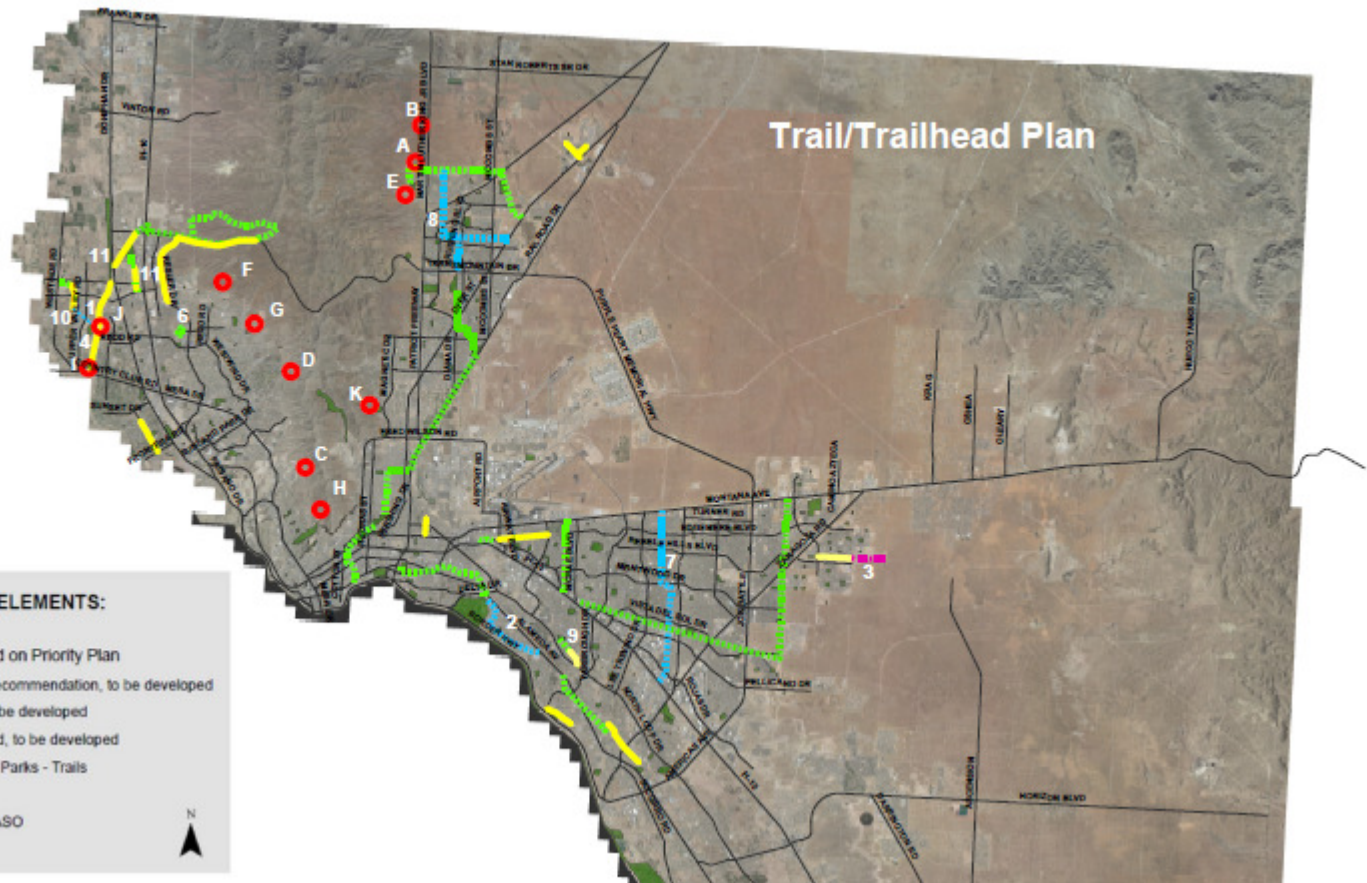
## EXISTING TRAILS AND PROPOSED TRAILHEADS - 2016

TRAILS	PLANNING AREA	GENERAL LOCATION	LENGTH (miles)
Artcraft/Sunset Terrace Linear Trail	NW	Artcraft & Borderland	0.5
Coach Jack D. Quaries Linear Park	NW	Riverbend Dr & Little Lane	0.2
Edgemere Median Linear Trail	E	Ainway to Hawkins	1.4
Ellis Lateral Linear Trail	NW	Lynne Beale at Debbie Good	0.8
Frank "Francis" T. Hourigan Linear Trail	E	2085 Shreve St.	0.9
Mesa Drain Linear Trail	NW	North Loop at Maurer	0.5
Mesquite Hills Linear Trail	NE	Mesquite Hills at Dyer	0.9
Ojo de Agua Linear Trail	NW	670 Villa Descanso	0.7
Paseo De Los Heroes Linear Trail	C	601 E. Eighth Street	0.4
Pueblo Viejo Linear Trail	NW	Roseway to Presa Pl	1.5
Raynolds Median Linear Trail	C	Hastings to La Luz	0.5
Rim Road Linear Park	C	Kansas to Brown	0.7
Rio Grande North Linear Trail	NW	Country Club to Borderland	2.8
Scenic Drive Linear Trail (Scenic Sundays)	C	Rim Rd to Wheeling	1.8
Three Hills Loop Trail	NW	7400 High Ridge, within Westside Community Park	2.0
Tierra Del Este Linear Park (future)	E	Rich Beem at Rainbow Point	1.0
<b>TRAILHEADS TO FMSP</b>			
Chuck Heinrich (1)	NE	MLK at Loma Casitas	n/a
Palisades (2)	C	Robinson at Rim Rd	n/a
Thousand Steps (3)	NW	Stanton North of Vaguerio	n/a
Thunderbird (4)	NW	Thunderbird North of Singling Hills	n/a
Lost Dog/Redd (7)	NW	Redd Rd at Helen of Troy	n/a
Lazy Cow (5)	NE	Andrew Barcena North of Loma Clara	n/a
Round House (6)	NE	Off of MLK Blvd; Approx 1.3 Miles North of Loma Real	n/a
Franklin Ridge (Hunt Arroyo) (8)	NW	North of High Ridge and South of Franklin Dove	n/a
Country Club (9)	NW	North of Country Club and Adjacent to the Rio Grande	n/a
North Open Space Reserve (10)	NE	West of Magnetic and South of Mountain Ridge	n/a



*"Delivering Outstanding Services"*





*“Delivering Outstanding Services”*



# TRAIL UPDATE

- Mountain to River Trail – Three Phases
  1. Identify trail corridor, research ownership or long term lease, master plan
  2. Land acquisition, agreements
  3. Trail Construction



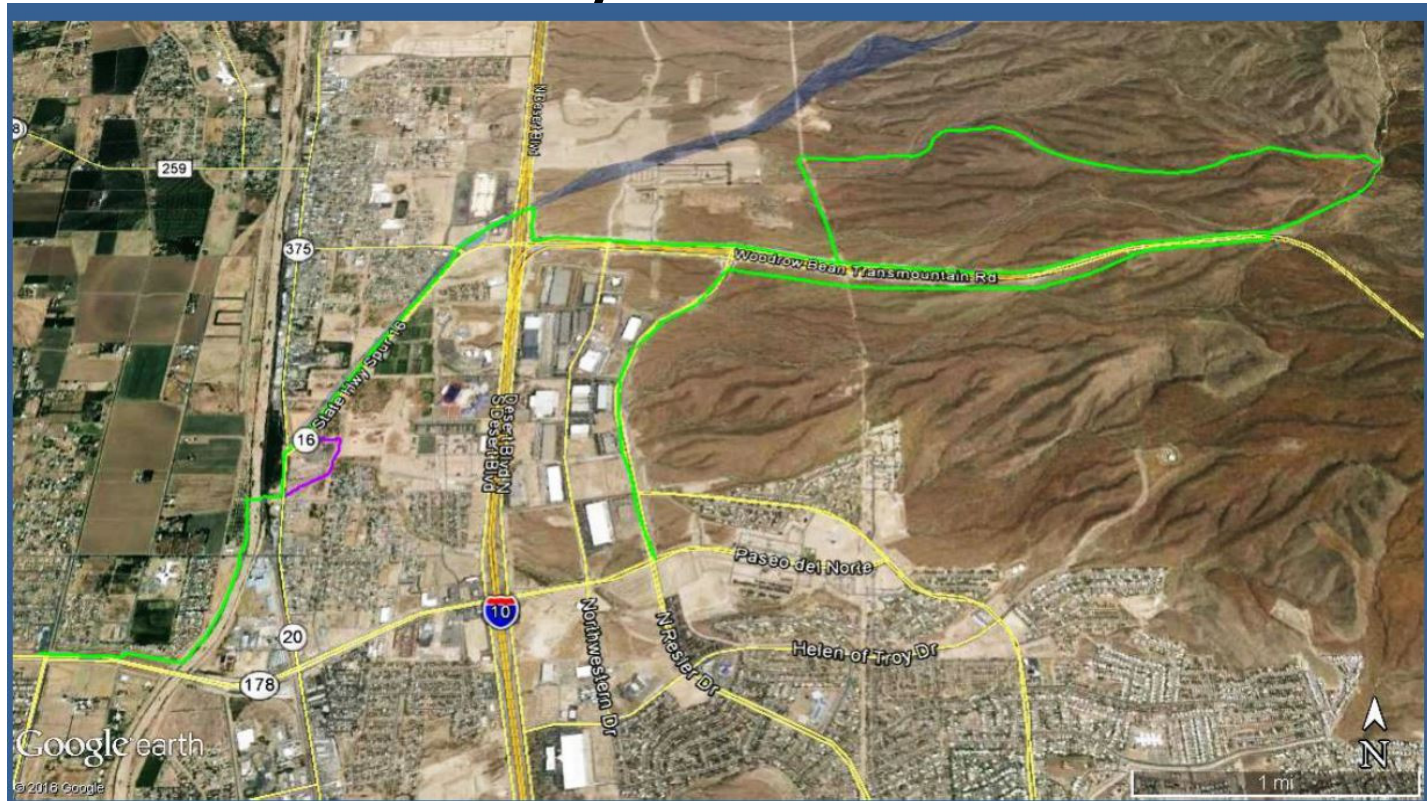
## TRAIL PROJECT RECOMMENDATIONS March 2017

Priority	Action/Project	Planning Area	Projected NEW miles	Cost Estimate	Considerations	Map Ref #
	<del>Sacramento</del> to Riverside Parks (PSB <del>02000000</del> , drain)	C/MV	2.5	\$300,000	GRANT- PDNH \$450,000 construction; City match \$300,000 ABE. TOTAL PROJECT \$1,150,000	2
New	Mountain to River Trail System – Phase I	NW		64,000	Identify trail corridor, master plan design, and provide overall cost estimate	1
	TDEK52/Rainbow Vista to John Hayes (PARO)	E	1	\$355,000	Connects neighborhood park to next segment of developer-constructed 5 mile trail.	3
	Valley Creek Access across IBWC levee to existing Rio Grande North Trail	NW	0.1	\$81,000	Access from existing VC Park paved parking lot to base of IBWC levee, base of levee to top of the levee, to Rio Grande Trail North.	10
New	Mountain to River Trail System– Phase II	NW	n/a	\$100,000	Land Acquisition, Agreements	1
New	Mountain to River Trail System – Phase III	NW	n/a	\$588,000	Implement trail construction	1
	Rio Grande Trail North, Country Club to just north of Meadow Oaks Street centerline (IBWC plus private)	NW	0.3	\$155,000	GRANT COMPANION. Expands existing RGTN up and over IBWC levee to new parking area. See Trailhead Plan and above for companion projects.	4
	Westside Community Park	NW	n/a	\$75,000	Define existing trails with DG; add mile marker signage not associated w/ 3 Hills Loop.	6
	Montana to I-10 (EPE between Lee Trevino & George Dieter), Segment A	E	1.4	\$437,500	DESIGN OF FULL TRAIL- START CONSTRUCTION. Segment A of 5.5 miles along EP Electric corridor.	7
	Skyline to Loma Real (EPE), Segment A	NE	1	\$315,000	DESIGN OF FULL TRAIL- START CONSTRUCTION. Segment A of 4 miles along EP Electric corridor. Provides a recreational/ alternative transportation amenity in an area that lacks access to parks.	8
	Carolina to Emerson (PSB <del>02000000</del> , drain)	MV	0.5	\$342,000	0.5 mile, connects existing 0.5 mi trail to Public housing & Park along PSB <del>02000000</del> .	9
	Elio Lateral Trail to Valley Creek Park (WC Irrigation District #1)	NW	1	\$315,000	1 mile of trail along WCID#1 creates a 1.7 mile trail connection to the Rio Grande Trail North.	10
	Sunset Terrace Trail Extension	NW	0.2	\$100,000	0.2 mi. of trail	11
	Sunset Terrace Trail Bridges	NW	n/a	\$200,000	Installation of 2 bridges crossing arroyos, connecting 1.2 miles of trail from <del>02000000</del> to the Westside Sports Complex	11
	Donald to Dyer (EPE)	NE	1	\$315,000	1 mile west-east along EP Electric corridor. Provides a recreational/ alternative transportation amenity in an area that lacks access to parks.	8
	Montana to I-10 (EPE between Lee Trevino & George Dieter), Segment B	E	1.4	\$437,500	Segment B of 5.5 miles along EP Electric corridor.	7
	Skyline to Loma Real (EPE), Segment B	NE	1	\$315,000	Segment B of 4 miles along EP Electric corridor. Provides a recreational/ alternative transportation amenity in an area that lacks access to parks.	8
	Montana to I-10 (EPE between Lee Trevino & George Dieter), Segment C	E	1.4	\$437,500	Segment C of 5.5 miles along EP Electric corridor.	7
	Skyline to Loma Real (EPE), Segment C	NE	1	\$315,000	Segment C of 4 miles along EP Electric corridor. Provides a recreational/ alternative transportation amenity in an area that lacks access to parks.	8
	Montana to I-10 (EPE between Lee Trevino & George Dieter), Segment D	E	1.4	\$437,500	Segment D of 5.5 miles along EP Electric corridor.	7
	Skyline to Loma Real (EPE), Segment D	NE	1	\$315,000	Segment D of 4 miles along EP Electric corridor. Provides a recreational/ alternative transportation amenity in an area that lacks access to parks.	8
TOTAL			16.2	\$6,000,000		





# Mountain to River Trail as Proposed by OSAB



*Delivering Outstanding Services*



# Questions and Comments

*"Delivering Outstanding Services"*