

I T E M 2 6 . 1

# 500 N. Mesa Easement Vacation

Easement Vacation







# Recommendation | Public Input

2

## **Planning Division / DCC recommendation:**

**Approval** of the vacation of a 20' utility and drainage easement.

**CPC Vote:** Unanimous Approval

**Public Input:** N/A

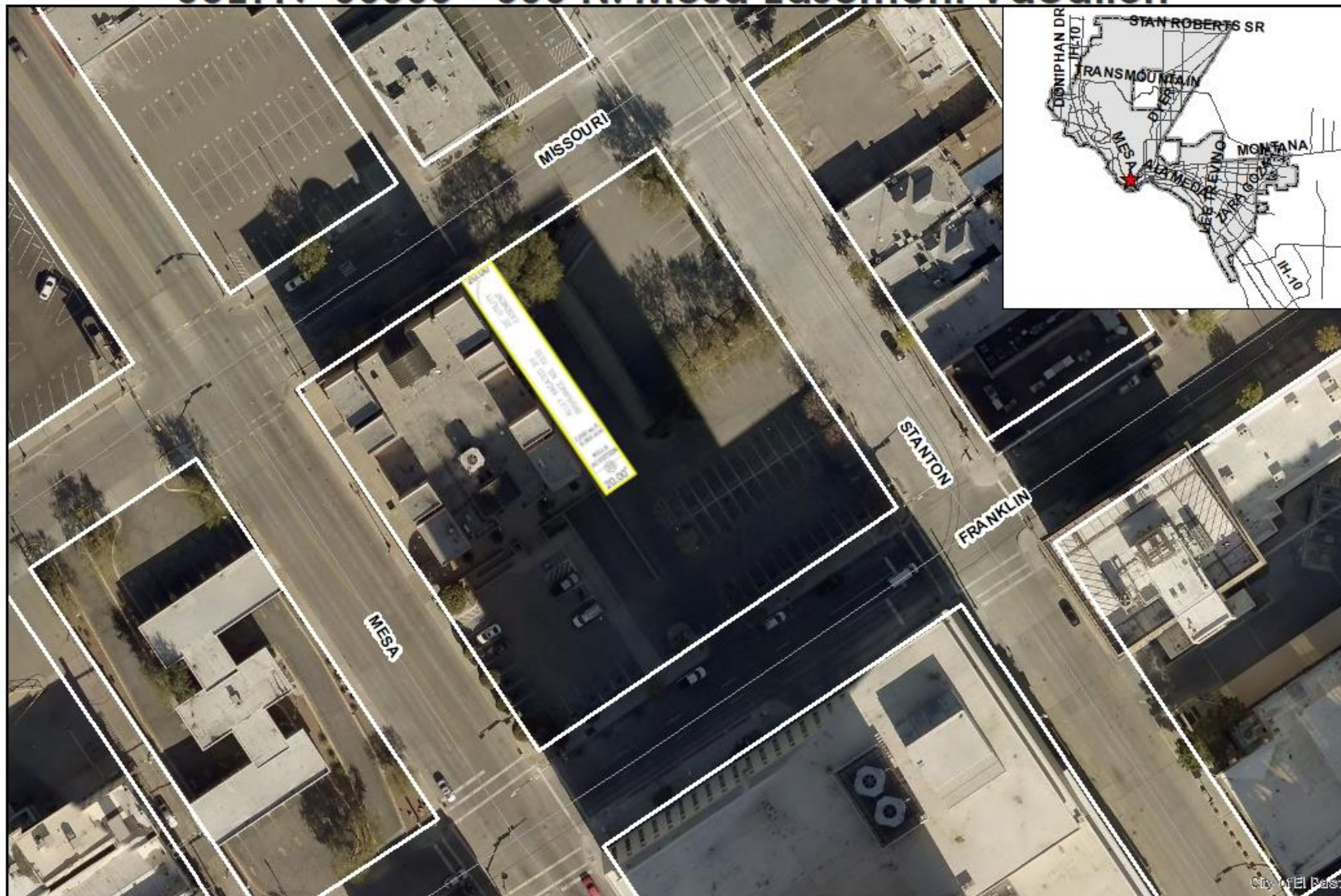
### **Strategic Goal #3 Promote the Visual Image of El Paso**

3.1 Provide business friendly permitting and inspection processes

3.2 Improve the visual impression of the community



# SUET19-00005 - 500 N. Mesa Easement Vacation



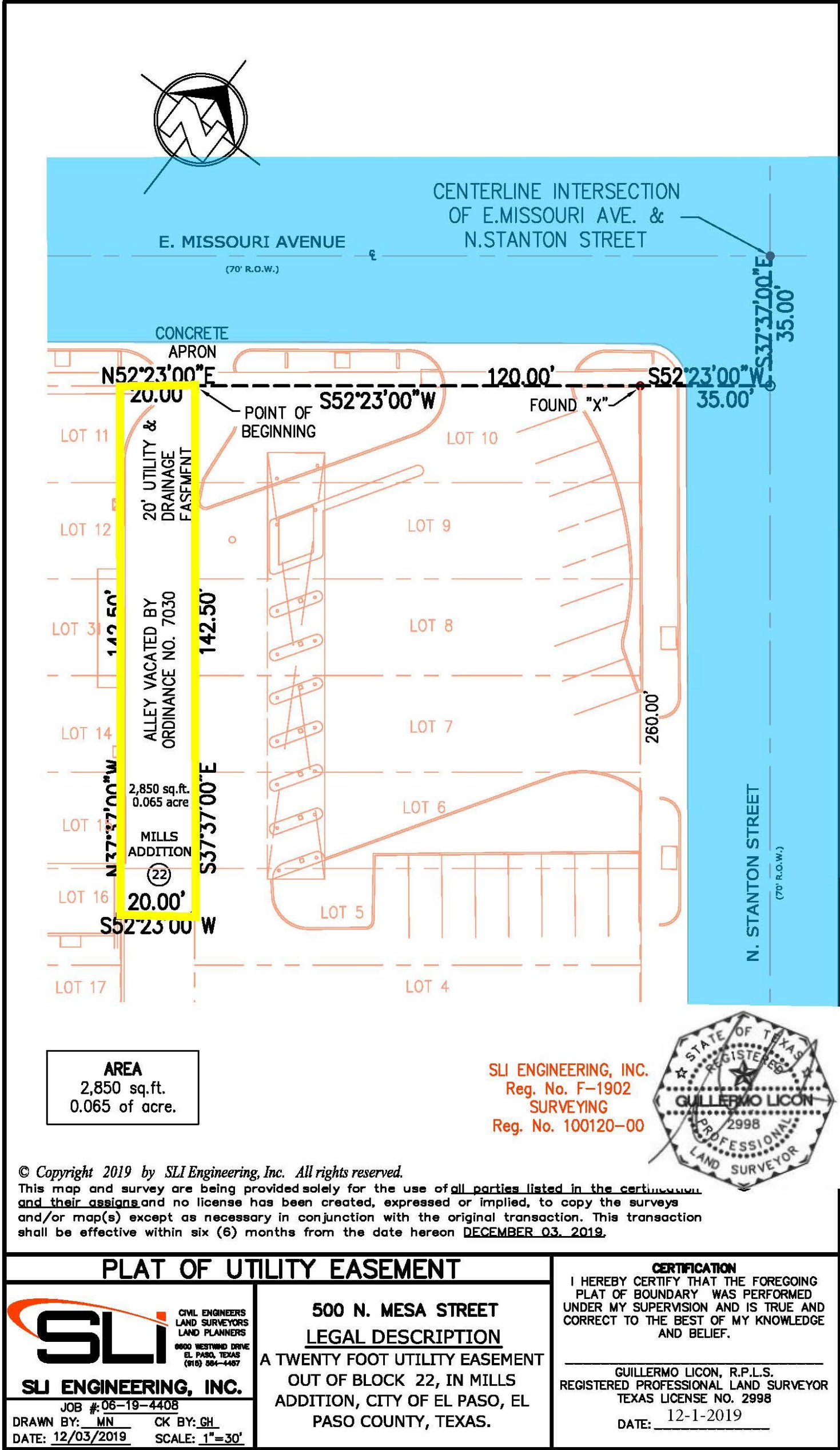
This map is designed for illustrative purposes only. The features depicted here are approximate and more site-specific studies may be required to draw accurate conclusions. Enlargements of this map to scales greater than its original can induce errors and may lead to misinterpretations of the data. The Planning & Inspections Department Planning Division makes no claim to its accuracy or completeness.



Streets









## South from Missouri Avenue





## North to Missouri Avenue (On Property)





THANK YOU

