

**CITY OF EL PASO, TEXAS  
AGENDA ITEM  
DEPARTMENT HEAD'S SUMMARY FORM**

**DEPARTMENT:** Capital Improvement

**AGENDA DATE:** March 21, 2017

**CONTACT PERSON/PHONE:** Andrew Goh, P.E., City Engineer, Capital Improvement, 212-0065

**DISTRICT(S) AFFECTED:** Citywide

**STRATEGIC GOAL:**

**SUBJECT:** Quarterly update on TxDOT Projects.

**BACKGROUND / DISCUSSION:** Mr. Bob Bielek, P.E., TxDOT EL Paso District Engineer will provide a Quarterly report on current and future projects within the El Paso region.

**SELECTION SUMMARY:** N/A

**PROTEST**

No protest received for this requirement.

Protest received.

**COUNCIL REPRESENTATIVE BRIEFING:** Briefing provided via email.

Was a briefing provided?  Yes or  Not Applicable (Routine)  
If yes, select the applicable districts.

- District 1
- District 2
- District 3
- District 4
- District 5
- District 6
- District 7
- District 8
- All Districts

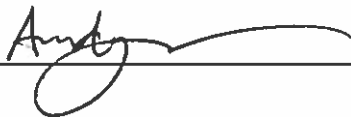
**PRIOR COUNCIL ACTION:** N/A

**AMOUNT AND SOURCE OF FUNDING:** N/A

**BOARD / COMMISSION ACTION:** N/A

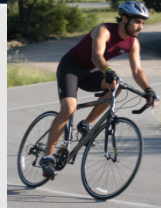
**\*\*\*\*\*REQUIRED AUTHORIZATION\*\*\*\*\***

**DEPARTMENT HEAD:**





# TEXAS DEPARTMENT OF TRANSPORTATION



## EL PASO DISTRICT

---

Major Project Review

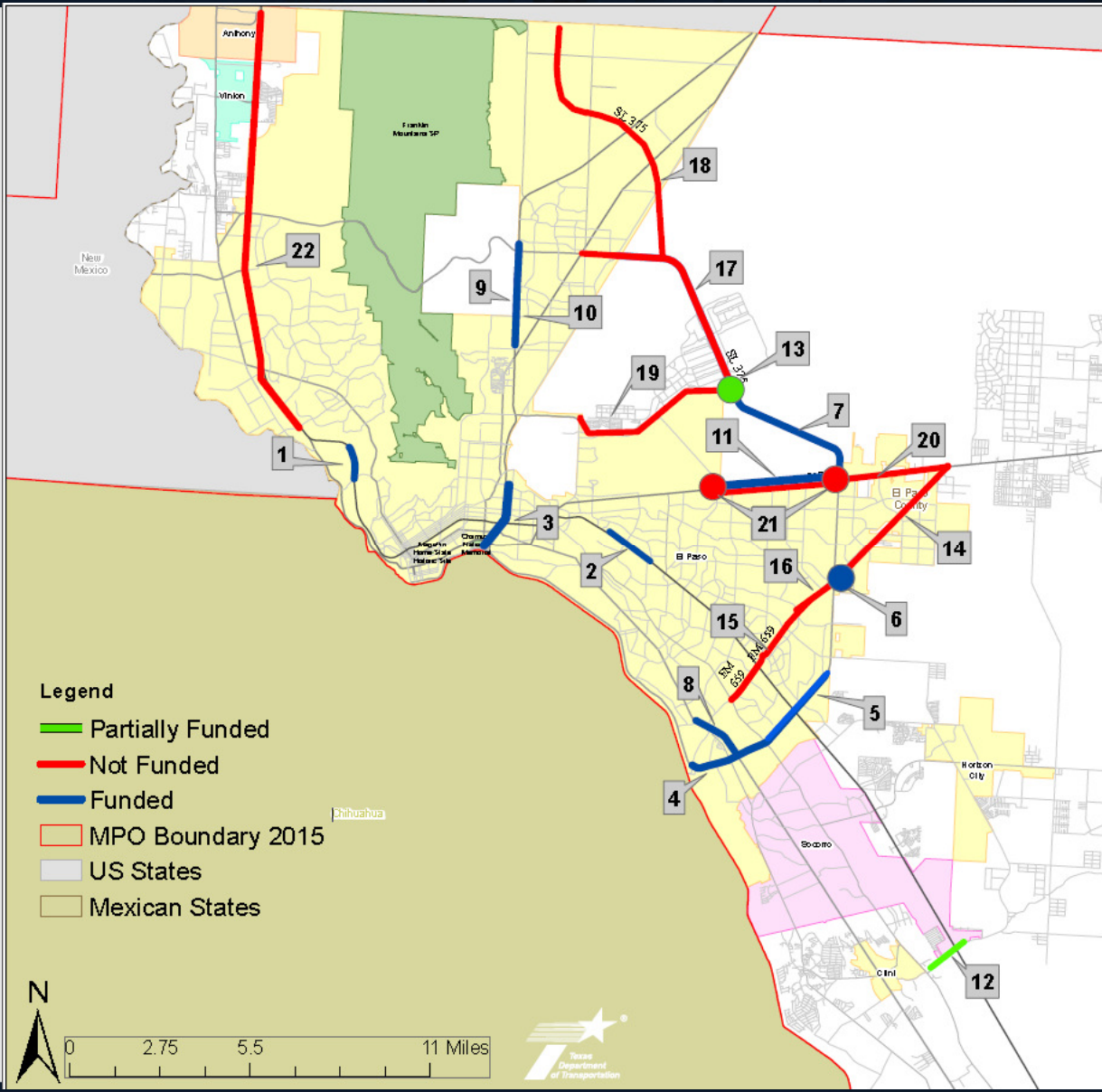
El Paso City Council

March 21, 2017



3/8/2017

# El Paso District Projects



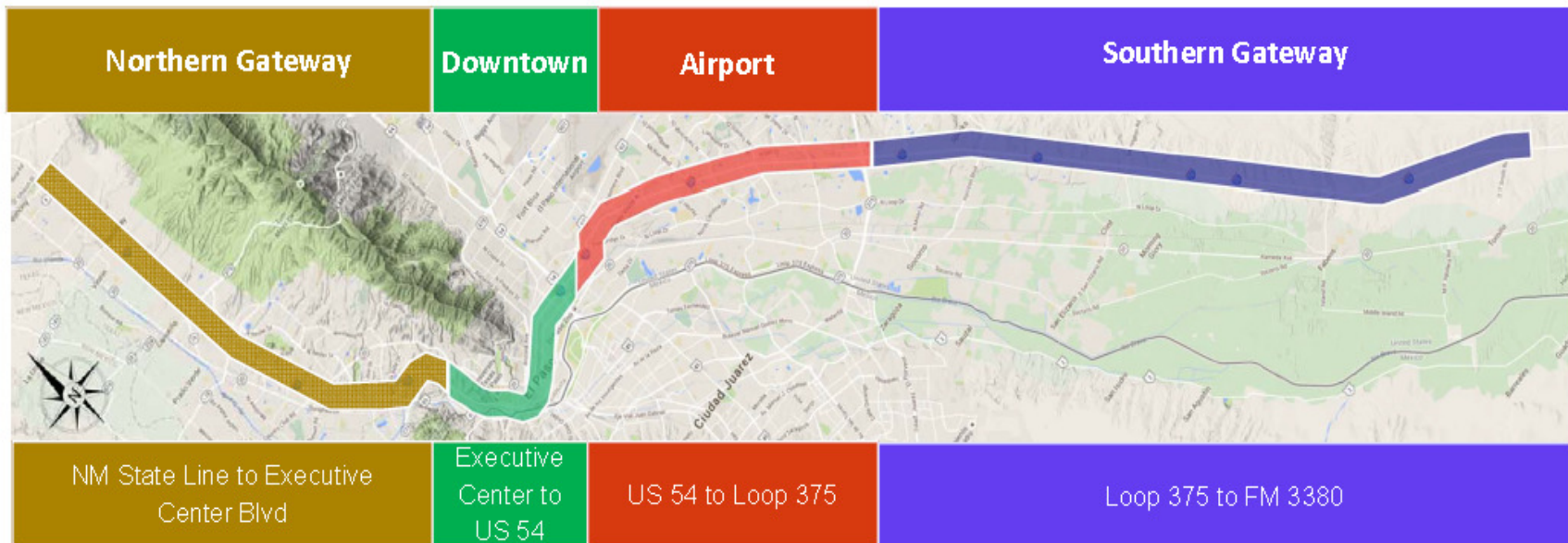
Funded		
#	Roadway	Limits
1	I-10	Mesa Park Frontage Road
2	I-10	Airway to Viscount
3	I-110/US 54	Direct Connectors: I-10 to LP375
4	LP375	Zaragoza POE to FM76(North Loop)
5	LP375	Zaragoza to Bob Hope
6	LP375	Zaragoza to Montwood Intersection
7	LP375	US62 to SS601
8	SH20	LP375 to Padres
9	US54	Hondo Pass to LP375- Main Lanes
10	US54	Hondo Pass to LP375- Operational Improvements
11	US62	Global Reach to LP375 Phase I
Partially Funded		
12	FM1110	I-10 to FM76(North Loop)
13	LP375	Direct Connectors @ SS601
Unfunded		
14	FM659	Sunfire to US62
15	FM659	I-10 to FM76(North Loop)
16	FM659	I-10 to LP375
17	LP375	BUS54(Dyer) to SS601
18	Northeast Parkway	LP375 to New Mexico 404
19	SS601	Airport Road to LP375
20	US62	Global Reach to FM659 Phase II
21	US62	Global Reach to LP375 Phase III
22	I-10	New Mexico State Line to Sunland Park Dr.

# **El Paso District Corridor Studies**

# I-10 Corridor Study

## REIMAGINE I-10

### Corridor Segments



- Public Outreach Events will be held at each of the four (4) corridor segments. A total of twelve (12) events are anticipated to occur during this study.

# I-10 Corridor Study Status

## REIMAGINE I-10

### I-10 El Paso Corridor Study



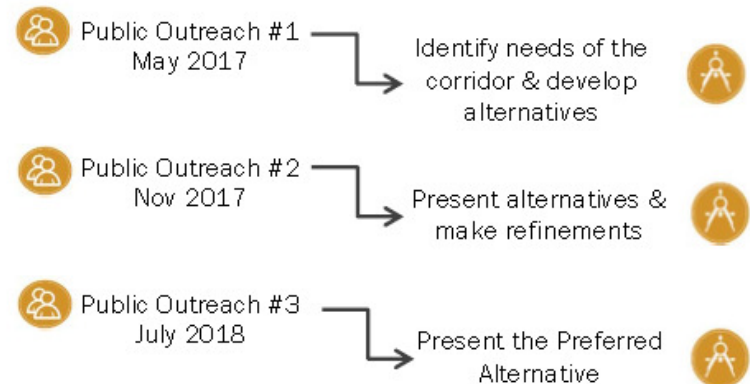
Project Description – TxDOT is conducting an analysis of current and future transportation needs for the El Paso I-10 Corridor, from the New Mexico State Line to FM 3380 (M.F. Aguilera Rd.).

#### What's Happening?

- Data Collection – The Study Team is currently in the data collection phase. This phase consists of collecting engineering, economic, freight, land use, environmental, and social information specific to the El Paso region and I-10 Corridor.
- Analysis – The Study Team has begun its analysis to identify hot spots or potential improvement areas.
- Project Webpage – The Project Webpage is under development. The webpage will include an interactive map for the public to learn about the corridor.

#### What to Expect?

- Public Outreach Events are being planned. These outreach events are intended to provide the public an opportunity to voice their concerns and propose improvements along the corridor. Advertisements will be published through various media sources notifying the public of the time and location of the events.



**\*\* Dates are subject to change.**

# SH20 (Mesa) Corridor Study

**Scope:** This traffic engineering and planning study will identify and evaluate all the various transportation aspects associated with the Mesa Street (SH 20) corridor. The study outcome will be a master plan of recommended short-, mid- and long-term multimodal solutions to upgrade corridor.

**Limits:** Doniphan Dr. to LP 375 (11 miles)

**Status:** Study is about 55% complete.

- Milestones completed: 1<sup>st</sup> Agency Working Group (AWG) Meeting-May 2016; Public Meeting Series- August 2016.
- Upcoming meetings: Workshop and the 2<sup>nd</sup> AWG Meeting-Spring 2017; 3<sup>rd</sup> AWG Meeting-Summer 2017 and the final Public Meeting Series-Fall 2017.



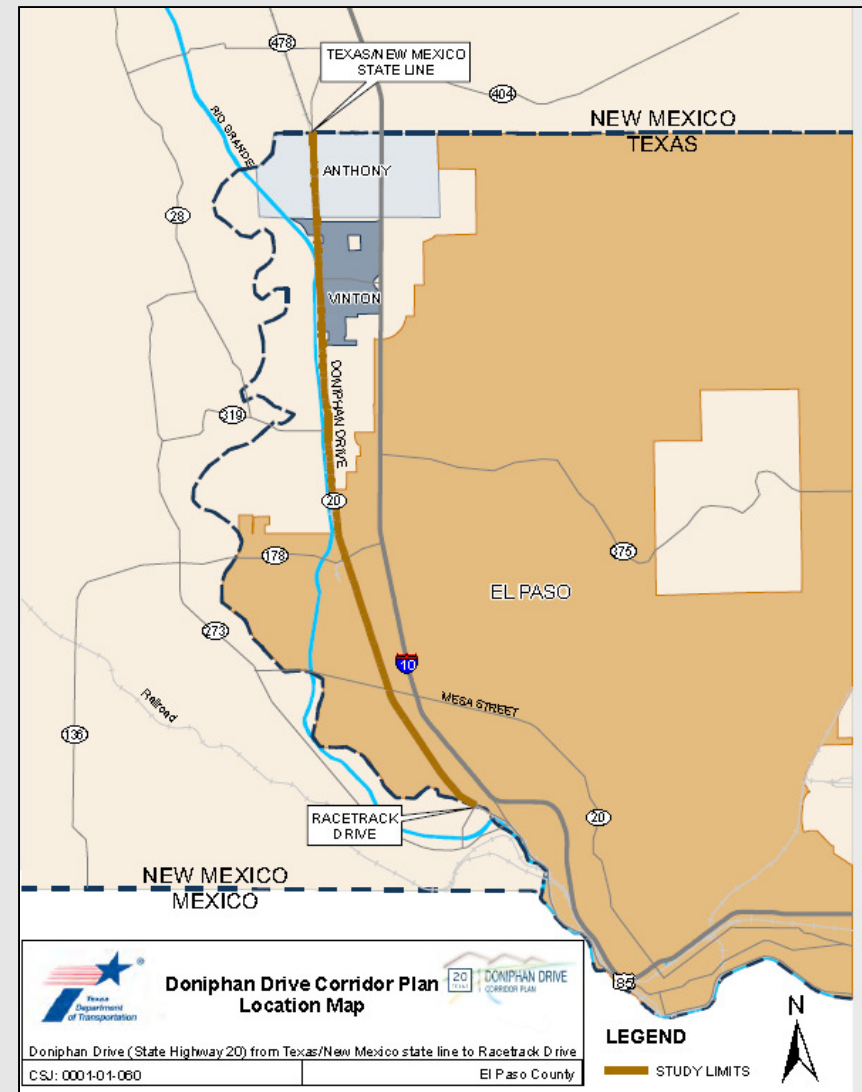
# SH20 (Doniphan Drive) Corridor Study

**Scope:** Create a corridor plan that will document the community's future vision in regard to transportation and development for Doniphan Drive through 2040. Identify projects for short-, medium- and long-term implementation.

**Limits:** Texas/New Mexico Stateline to Racetrack Dr. (14.5 miles)

**Status:** Study is about 40% complete

- Milestones completed: 1<sup>st</sup> AWG Meeting-September 2016; 1<sup>st</sup> Public Meeting-September 2016
- Upcoming meetings: 2<sup>nd</sup> AWG Meeting-Summer 2017; 2<sup>nd</sup> Public Meeting-Fall 2017, 3<sup>rd</sup> AWG Meeting-Winter 2017 and 3<sup>rd</sup> Public Meeting Winter 2017.



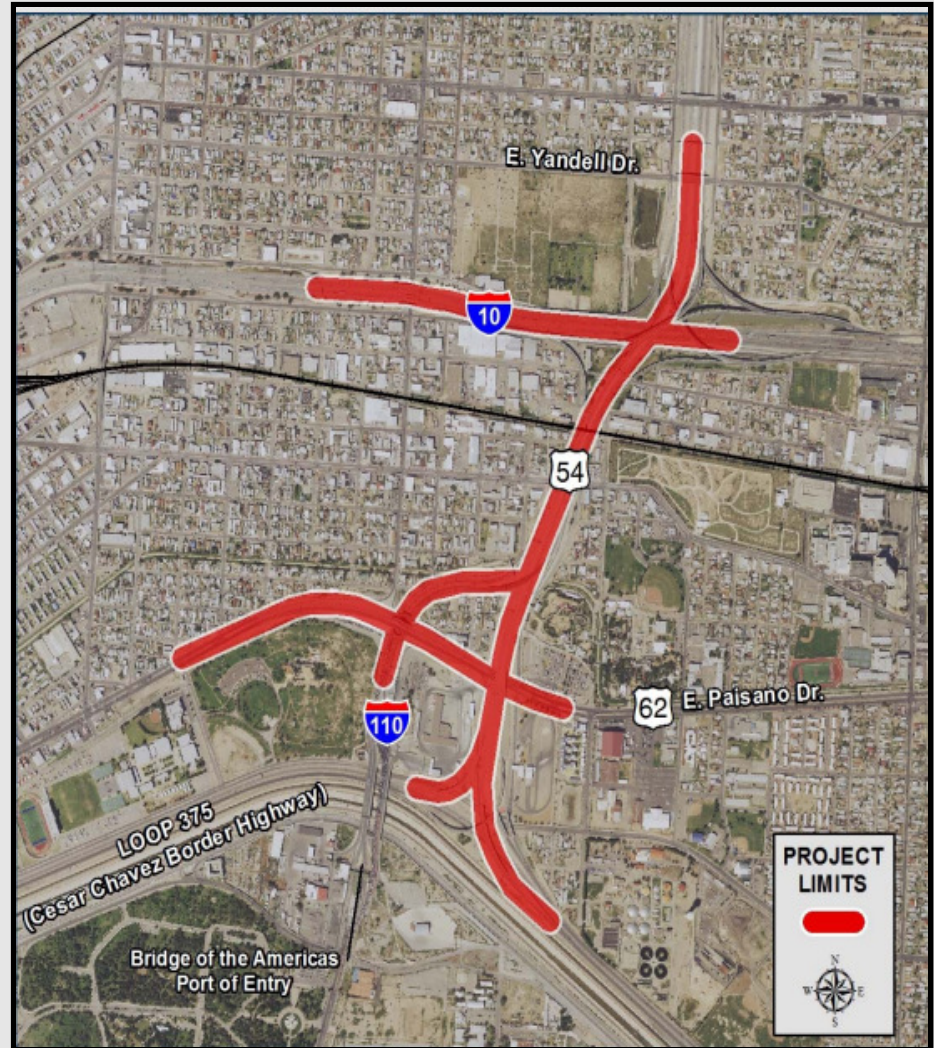
# **El Paso District Development Projects**

# I-10 Connect Project

## Project Scope:

The I-10 Connect Project is at the convergence of US 54 and I-10 in El Paso County. Currently, only the westbound Loop 375 to westbound I-10 traffic movement has direct access between I-10 and Loop 375. The three other connections from I-10 to Loop 375 require commuters and commercial trucks to divert from the freeway and use local roadways. The existing configuration on I-110 leading to the Port of Entry experiences excessive congestion during peak periods of the day, resulting in spillbacks to US 54 and the I-10 connector ramps.

- Construction Cost Estimate: \$84.6 M
- Engineering Cost Estimate: \$5.4 M
- Estimated Let Date – September 2018
- Outstanding Issues:
  - EA Document:
  - Potential for ROW acquisition depending on construction
  - IAJR – FHWA Coordination
  - Potential Railroad coordination



# LP 375 Managed Lanes, Frontage Roads and Ramps

## Project Scope:

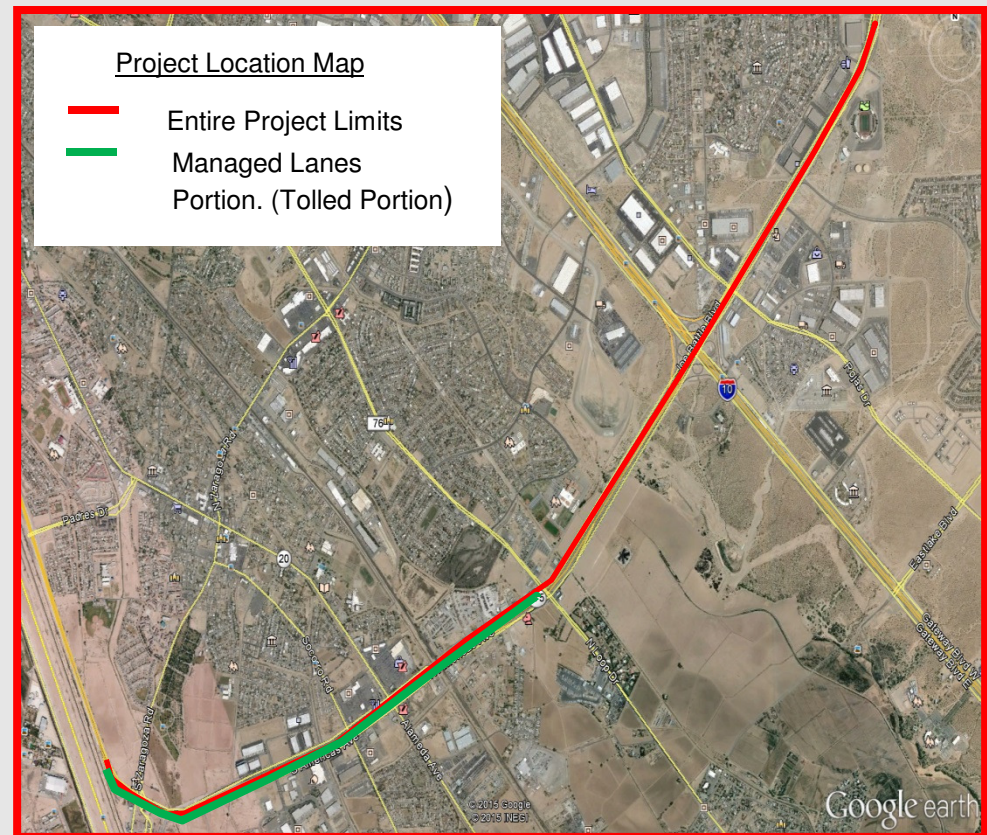
Provide relief to the traveling Public along Loop 375 by widening from 4 to 6 lanes from Bob Hope to Dr. Zaragoza Rd(FM 659) TxDOT would also Construct managed lanes within the limits between Zaragoza Rd. and North Loop Dr.

## Main Lanes:

- Construction Cost Estimate: \$34.5 M
- ROW Cost Estimate: Unknown
- Engineering Cost Estimate: \$2.2 M
- Estimated Let Date: July 2018

## Frontage Road and Ramps:

- Construction Cost Estimate: \$31.1M
- Outstanding Issues: This project is fully funded but should constructed with the main lanes.  
Estimated Let Date: July 2018

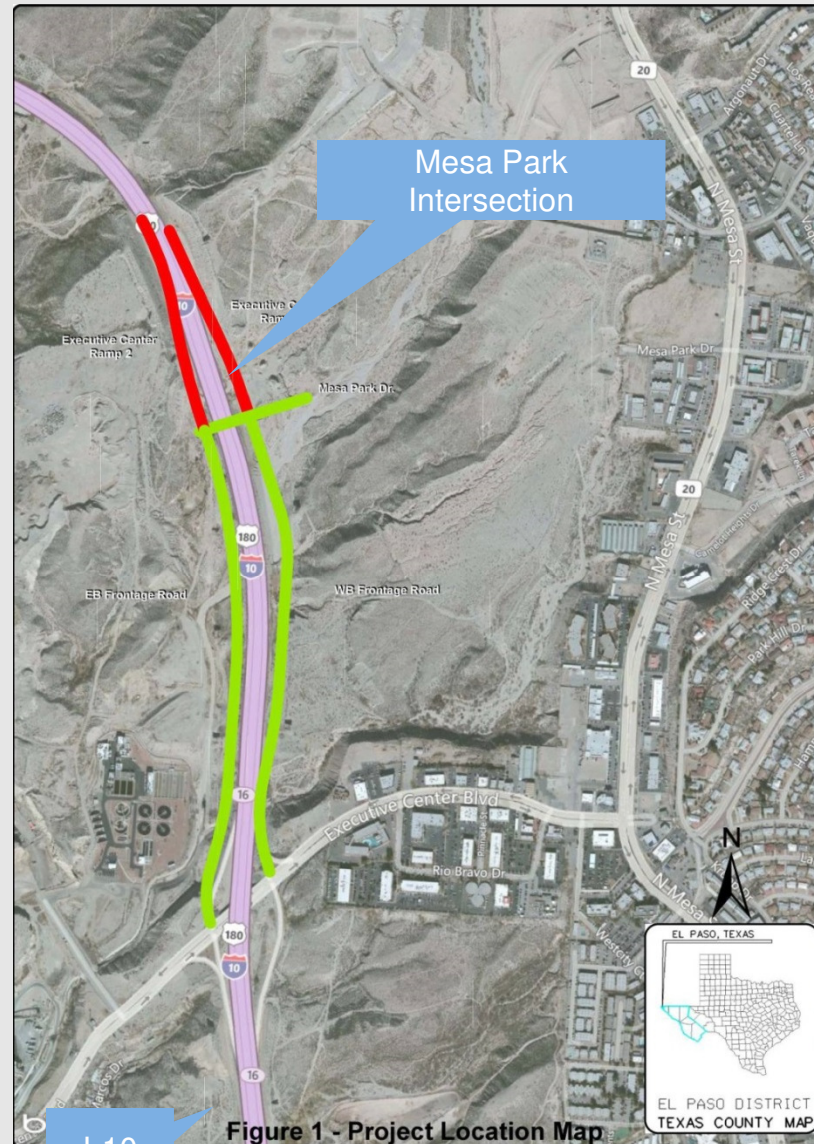


# Mesa Park Improvements

## Project Scope:

The proposed project will provide a new interchange at Mesa Park and frontage roads and ramps to I-10.

- **Cost Estimate:** \$31.2 Million
- **Let Date:** July 2017- Tentative
- **Outstanding Issues:**
  - Needs Federal Access Approval



I-10

# I10 Operational Improvements

## Project Scope:

The proposed project will provide operational ramp and lane improvements, including a braided ramp, to be made on I-10 from Viscount Blvd to Airway.

- **Cost Estimate:** \$14 Million
- **Estimated Let Date:** August 2017



# US54 Main Lanes and Operational Improvements

- **Project Scope:**

The project will be providing added capacity from Hondo Pass Avenue to Loop 375/ Transmountain. This will be achieved by removing the center v-ditch , cable barrier, and illumination with 2 added lanes, traffic barrier and high mast illumination. The project will also reverse the existing on/off ramps in order to allow for traffic to merge on the access roads instead of the main lanes. Operational improvements will include turnarounds at Hondo Pass Avenue, Diana Drive, and at Loop 375 Transmountain.

- **Cost Estimate:** \$35 Million

- **Let Date:** August 2017

## Conceptual Rendering



Northbound on US 54 at Loop 375/Transmountain

# US 62: Global Reach to LP375 Phase 1

## Project Scope:

This corridor improvement project is a major part of the Ft. Bliss program to improve the network of roadways around and through the south eastern vicinity of U.S. Army Fort Bliss.

- Construct new 3 lane WBFR from Global Reach to Tierra Este.
- Construct 6 lane WB and EB Express Lanes from Lee Trevino to Tierra Este.
- Construct Express lane over passes at Lee Trevino, Wooster, and George Dieter Dr.
- Construct under-passes at Saul Kleinfeld and Loop 375 frontage roads.

## Limits:

Montana (US 62/180) from 0.5 miles west of Global Reach to 0.5 miles west of Zaragoza (FM 659).

**Cost Estimate:** \$ 121 Million

**Estimated Let Date:** 2019



# LP375: US62 to SS601

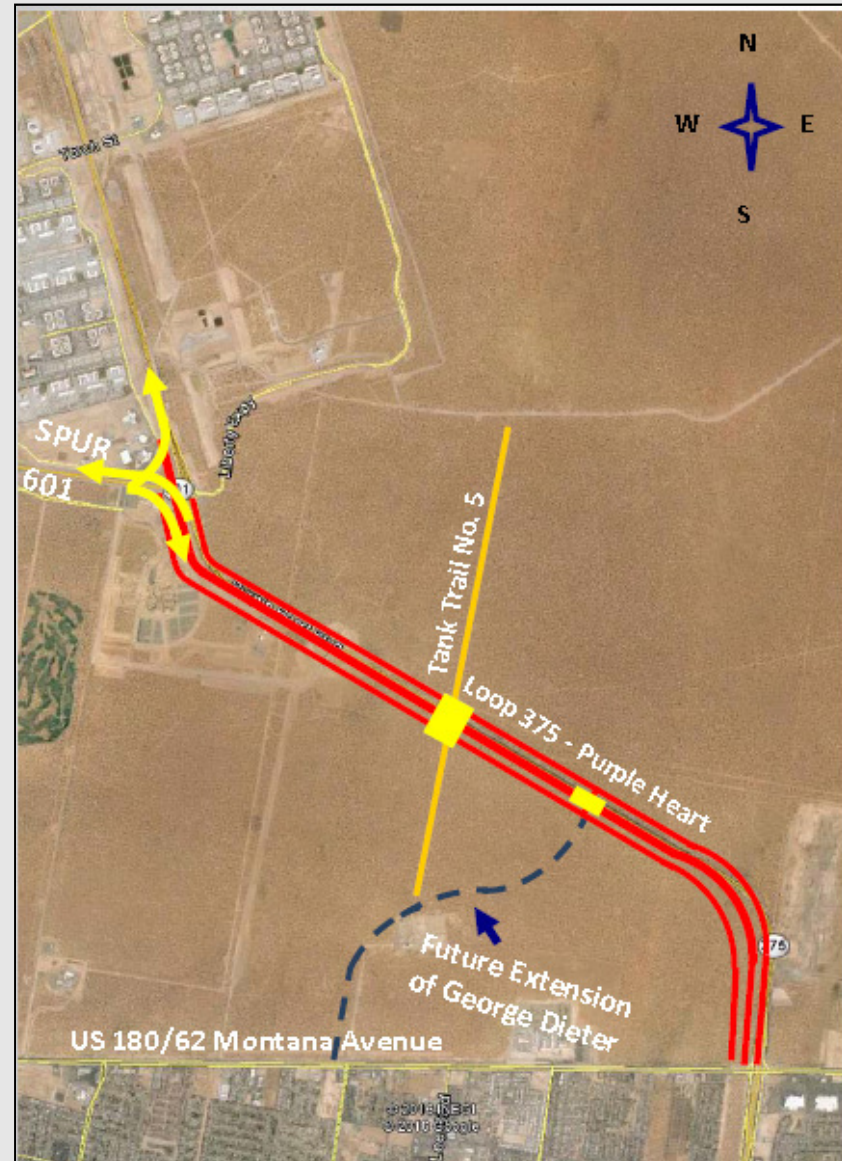
## Project Scope:

This project includes the following improvements: widening NB & SB Main lanes of LP375.

Limits: US62 to SS601

Cost Estimate: \$ 44.6 Million

Estimated Let Date: 2019



# FM 659: Zaragoza/Montwood Intersection

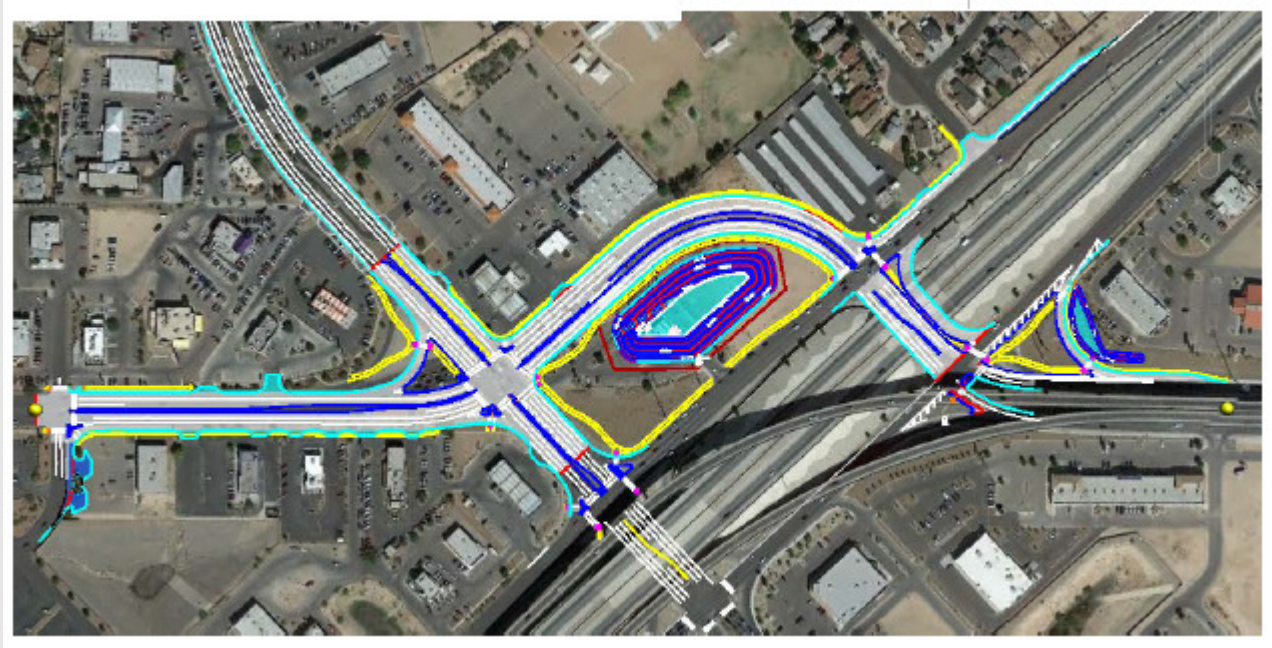
## Project Scope:

*The TxDOT–El Paso District proposes a 4-lane curb and gutter divided roadway section, (2-lanes in each direction, with a 14-ft raised median to connect Zaragoza Road, between Montwood Drive and Loop 375. Bike lanes and sidewalks are proposed to meet the pedestrian and bicycle travel demands within the corridor.*

**Limits:** .144 Miles East of LP375 to .277 North of Saul Kleinfeld

**Cost Estimate:** \$10 Million

**Estimated Let Date:** August 2018

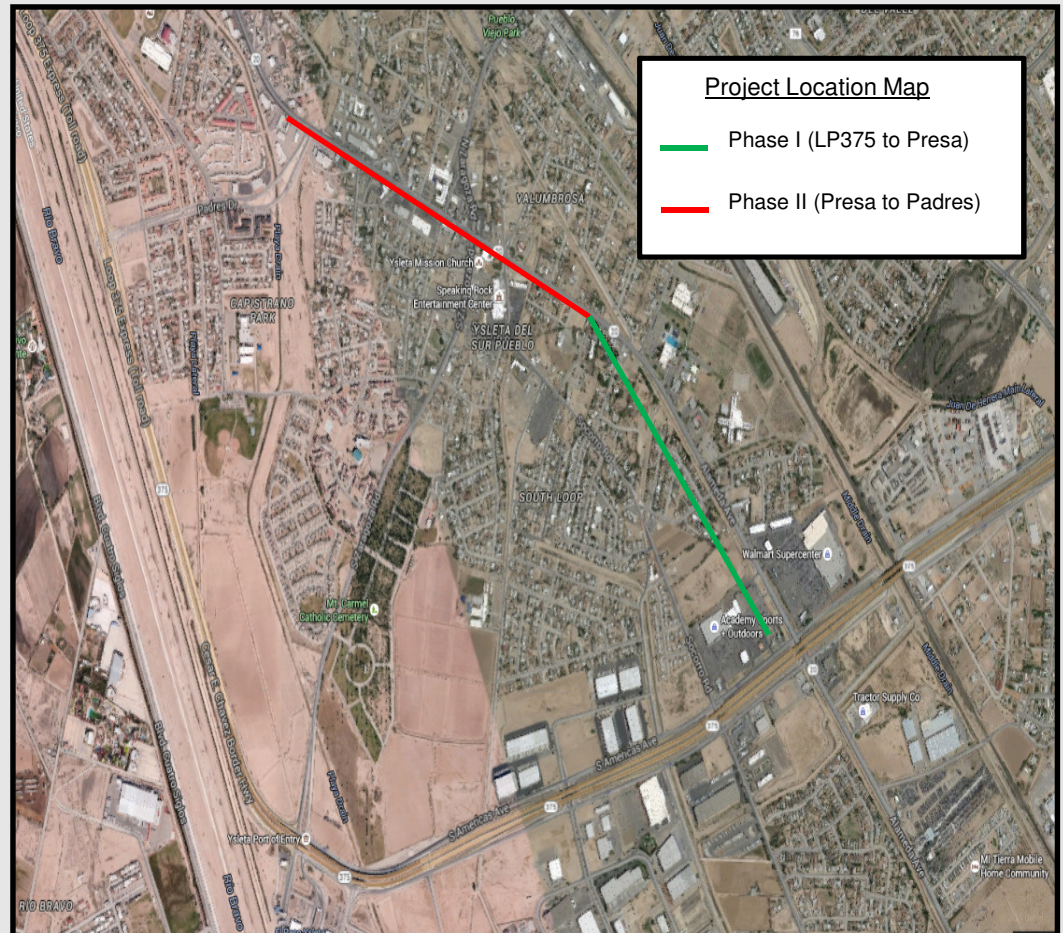


# Alameda (SH 20)

## Project Scope:

Reconstruct SH20 from a four lane undivided highway to a four lane divided highway with a raised median and left turn lanes. Project will include utility relocations, drainage improvements, concrete pavement and pedestrian improvements.

- **Construction Cost Estimate:**
  - Phase I \$9.2 Million
  - Phase II \$ 9 Million
- **Engineering Cost Estimate:** \$ 1 M
- **Outstanding Issues:**
  - The District only has partial funding.
  - Environmental clearance is in Phases, therefore it will be let in two phases.
- **Estimated Let Date:**
  - Phase I (May 2017)
  - Phase II (FY 2021)



# **Key El Paso Construction Projects**

# Border West Expressway Project Limits



# Border West Expressway

## Project Scope:

The Border West Expressway project will provide an alternate route for I-10 and will address needed improvements to safely guide the region's growth and development. The project is located west of downtown El Paso, south of I-10 and extends approximately 7.4 miles from Racetrack Drive near Doniphan Road and New Mexico 273 east to one mile east of Park Street near US 54.

- **Design Build:** \$650 M
- **Construction Start Date:** April 2015
- **Estimated Completion Date:** Fall 2018



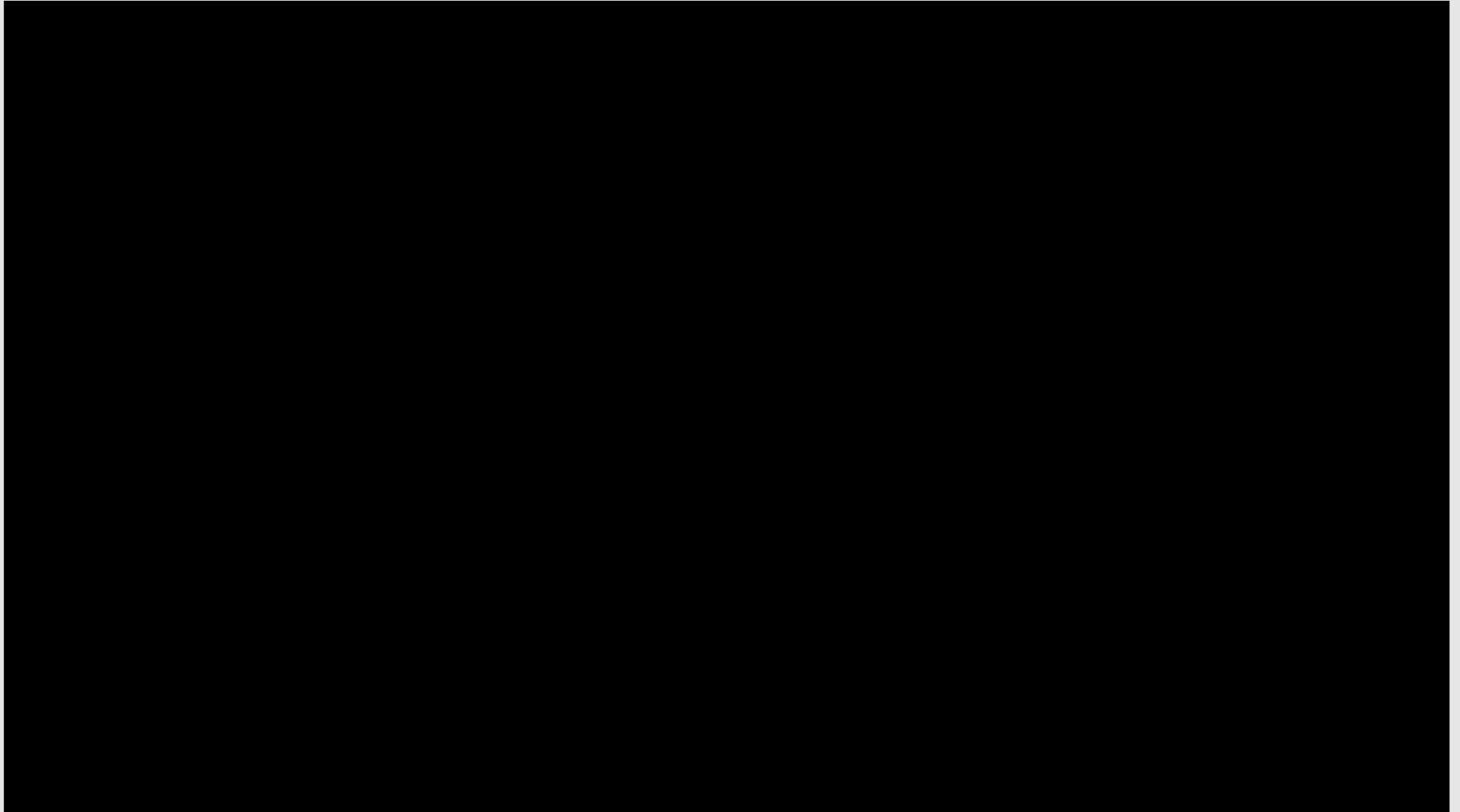
# BWE Work Area 2



# BWE Work Area 2



# Border Highway West Expressway



# GO10 and BWE Coming Together



# GO 10 Project (I-10 Collector Distributor lanes)



## WORK ZONE 1

- Construction of CD lanes from North Mesa Street to Executive Center Boulevard
- Construction of direct connector from southbound Resler Drive to eastbound CD lanes
- Reconstruction of the I-10/US 85 interchange.
- Addition of new lanes to the eastbound/westbound mainlanes

## WORK ZONE 2

- Construction of U-turns at North Mesa Street
- Construction of direct connector from southbound Sunland Park Drive to eastbound CD lanes

## WORK ZONE 3

- Construction Sunland Park Drive on-ramps and off-ramps
- Construction of eastbound/westbound CD lanes.
- Improvements to Sunland Park Drive adjacent to I-10

## WORK ZONE 4

- Construction of North Mesa Street from north of I-10 to south of I-10, including the adjacent ramps
- Construction of westbound CD lanes near Resler Drive and ramp to Resler Drive
- Construction of westbound CD lanes under Sunland Park Drive

ALTERNATE ROUTES

PASANO DRIVE (US 85) IS SUBJECT TO CLOSURES BY OTHER CONSTRUCTION PROJECTS



# GO 10 Project (I-10 Collector Distributor Lanes)

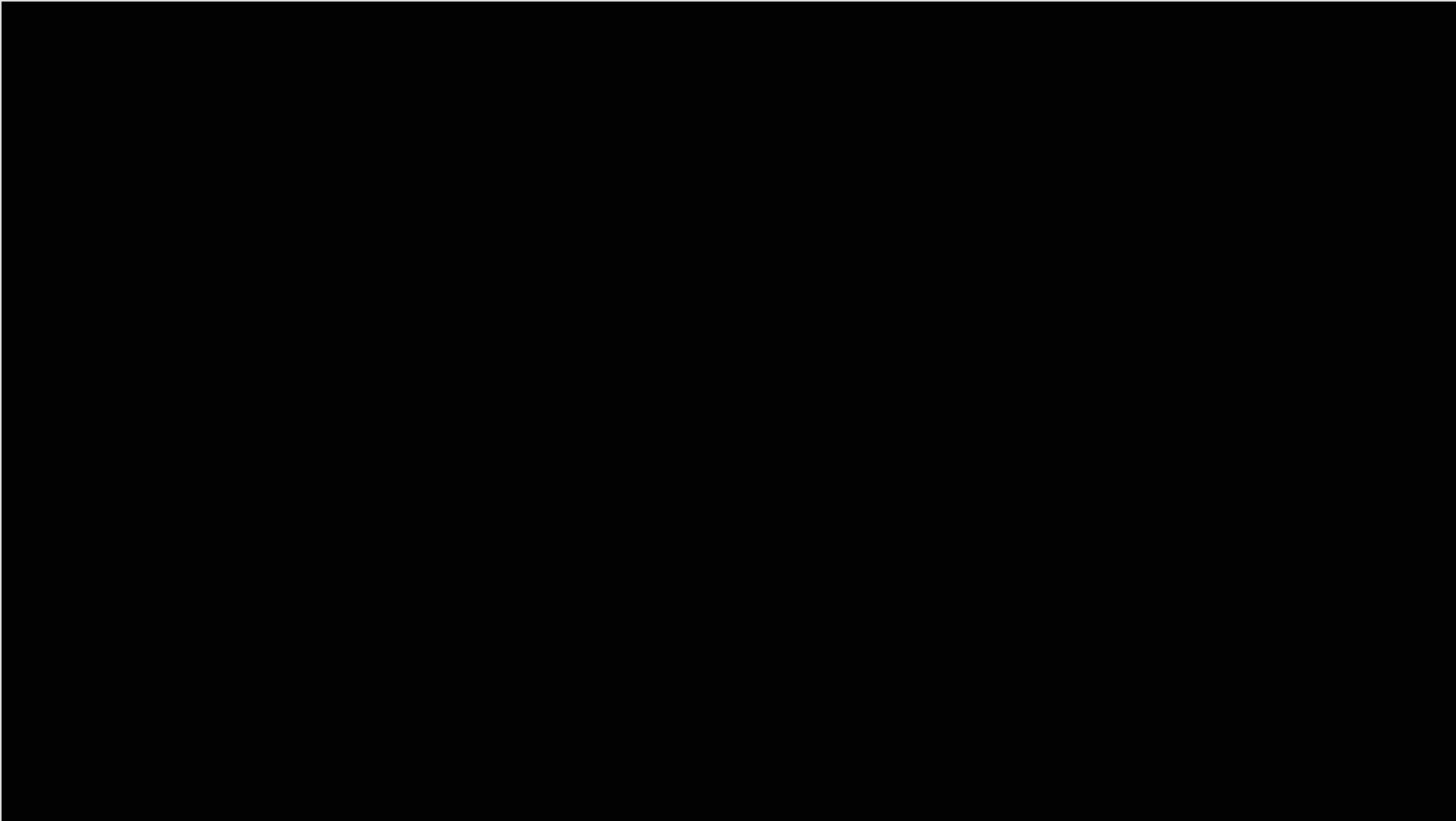
## Project Scope:

This project includes intersection improvements and the addition of collector-distributor (C-D) lanes, main lanes, frontage roads and direct connector ramps on Interstate 10 (I-10) between State Highway (SH) 20 (Mesa St.) and Executive Center Blvd. in El Paso. The I-10 CD lanes project will improve connectivity and reliability to the segment of I-10 through El Paso where there currently are no frontage roads. This project will provide a vital connection to the Border Highway West project, which completes the southern segment of LP 375 that connects international ports of entries such as Zaragoza and the Bridge of the Americas, as well as downtown El Paso.

- **Low Bid:** \$158.8 Million
- **Let Date:** October 2014
- **Construction Start Date:** April 2015
- **Expected Completion Date:** August 2019
- **Project Website:** [www.go10elpaso.com](http://www.go10elpaso.com)



# GO10 Project Video



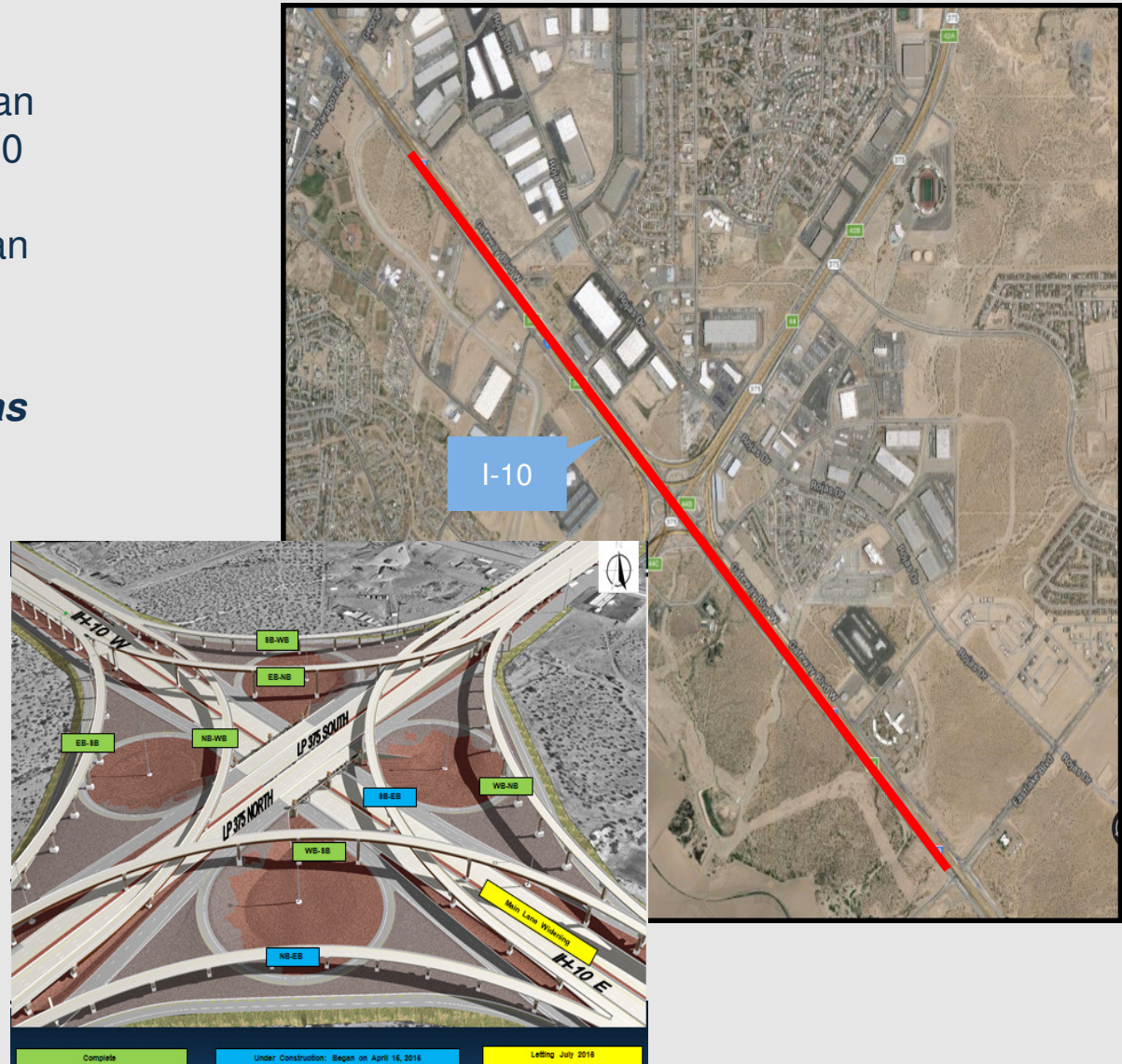
# I-10 Widening (Zaragoza to Eastlake)

## Project Scope:

The proposed project will provide an additional lane on both sides of I-10 from Loop 375 to Eastlake and improve the frontage roads to urban standards within these limits.

*This completes the I-10/Americas Interchange project.*

- **Cost Estimate:** \$12.9 Million
- **Let Date:** July 2016
- **Estimated Completion:** Winter 2018
- **Prop Cat 2 funds**



# I-10 Operational Improvements (Viscount to Zaragoza)

## Project Scope:

The project provides an additional lane in both directions from Viscount to Zaragoza. This project replaces the centerline lighting with High Mast lighting and includes a sound wall and landscaping.

- **Low Bid:** \$18.1 Million
- **Let Date:** July 2014
- **Construction Start Date:** September 2014
- **Construction Completed:** Winter 2016

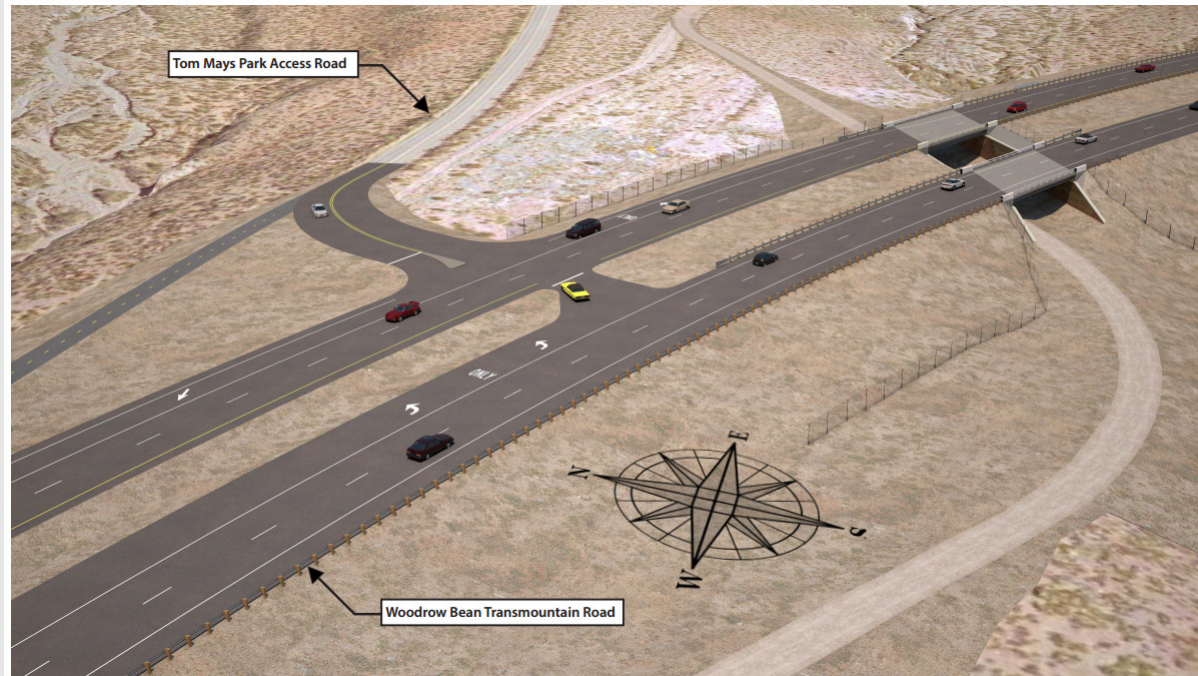


# Franklin Mountain State Park Connectivity

## Project Scope:

The proposed project will provide connectivity for wildlife, hikers and cyclists between the north and south sides of Loop 375 near the entrance to Franklin Mountain State Park.

- Cost Estimate: \$3.2 Million
- Let Date: August 2015
- Construction Completion: Spring 2017



# LP 375 (Montana to Bob Hope )

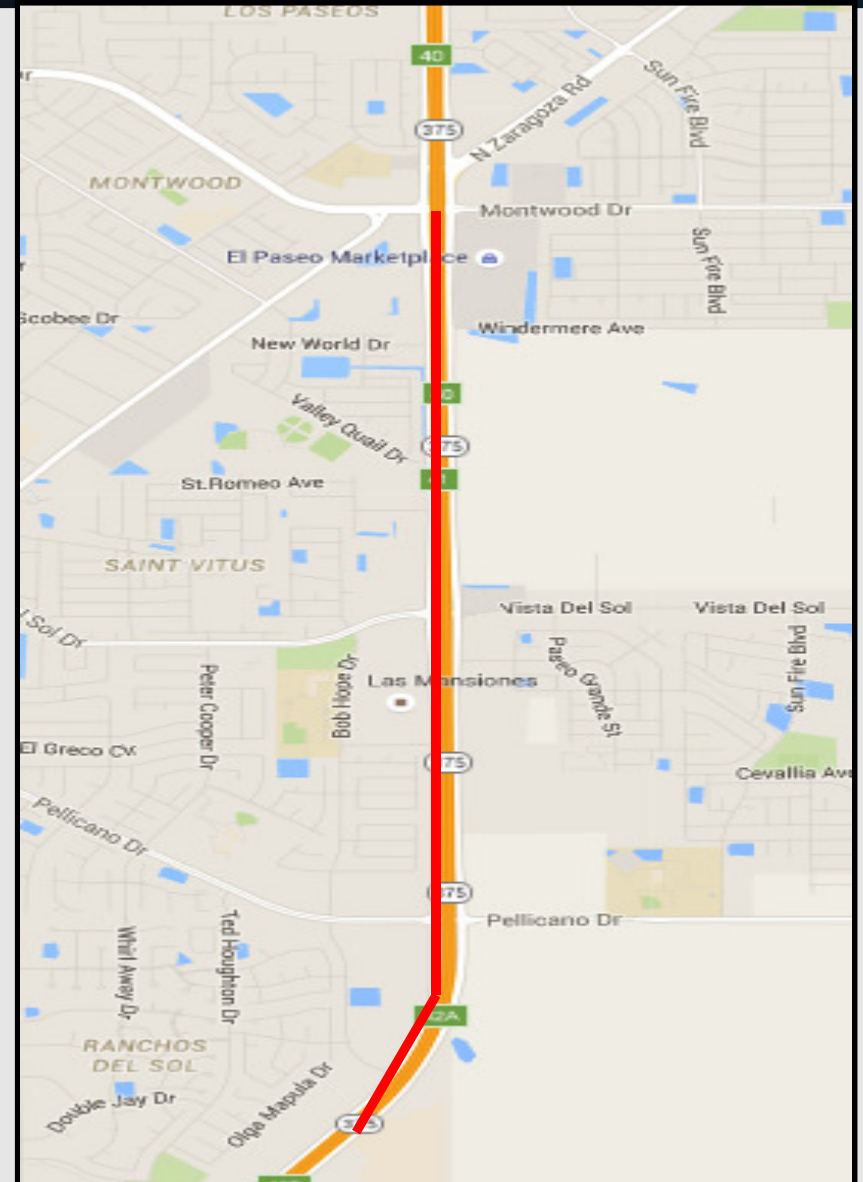
## Project Scope:

The Loop 375 project will provide an additional lane in each direction. The project is located in far east El Paso, southeast of Fort Bliss, and extends approximately 7.8 miles from Montana Avenue to Bob Hope Drive near IH 10. It includes replacing the centerline HPS lighting with High Mast LED lighting, installing new variable message signs, additional directional signing, and a new auxiliary lane from Vista del Sol to Montwood.

**Cost Estimate:** \$21.8 Million

**Let Date :** December 2015

**Completion Date:** Winter 2017

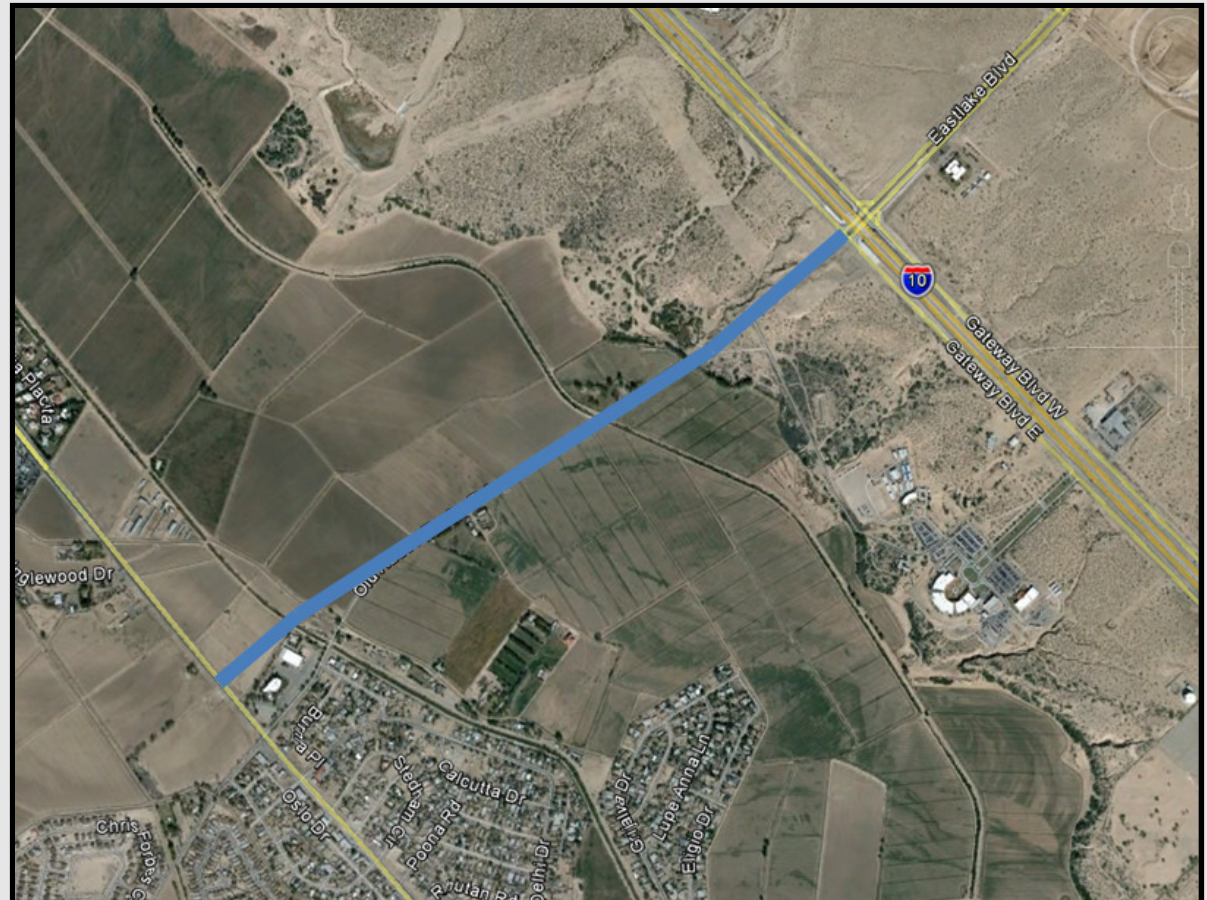


# Old Hueco Tanks

## Project Scope:

This project will construct a new 4 lane raised median divided urban collector roadway from I-10 to North Loop.

- **Cost Estimate:** \$7.5 Million
- **Let Date:** August 2016
- Let by CRRMA
- The ROW and Utility coordination to be completed the local government.
- This is not on-system but has potential to become on-system.
- This project is sponsored by City of Socorro with participation by El Paso County.



# Carolina Bridge Replacement

## Project Scope:

This project will replace the current bridge and upgrade the pedestrian facilities from Stiles Drive to Alameda Drive (SH20).

- **Cost Estimate:** \$7.9 Million
- **Let Date:** January 2016
- **Construction Start Date:** March 2016
- **Construction Completion:** Summer 2017



# Questions?