

**CITY OF EL PASO, TEXAS
AGENDA ITEM
DEPARTMENT HEAD'S SUMMARY FORM**

DEPARTMENT: Capital Improvement Department
AGENDA DATE: April 2, 2018
CONTACT PERSON/PHONE: Sam Rodriguez, P.E., City Engineer, 212-0065
DISTRICT(S) AFFECTED: ALL
STRATEGIC GOAL: No. 3: Promote the Visual Image of El Paso
No. 7: Enhance and Sustain El Paso's Infrastructure Network

SUBJECT:

Presentation on CID landscape administrative procedures.

BACKGROUND / DISCUSSION:

This presentation will discuss administrative procedures related to landscaping on capital projects for local and arterial roadways.

PRIOR COUNCIL ACTION:

N/A

AMOUNT AND SOURCE OF FUNDING:

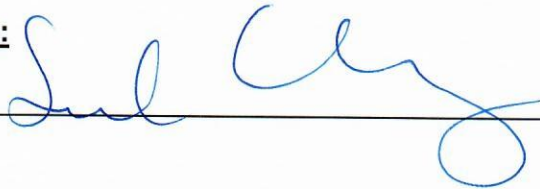
N/A

BOARD / COMMISSION ACTION:

N/A

*****REQUIRED AUTHORIZATION*****

DEPARTMENT HEAD:





Street Reconstruction Projects – Landscaping



April 2, 2018

"Delivering Outstanding Services"



Street Reconstruction Projects - Landscaping

Existing CID Landscape Administrative Procedures

CID developed a Landscape Administrative Procedures for street reconstruction and median/parkway landscape in 2015. These standards promote high-level design criteria and exceed the City's street tree and landscape ordinance for arterials.

Arterials

- 3-inch caliper streets trees placed at 30-foot intervals
- High density shrub palette based on CID landscape design standards
- City maintains landscaping per Code

Local Streets

- 2-inch caliper streets trees placed at 30-foot intervals
- Low density shrub palette based on CID landscape design standards
- Residents are required to maintain landscaping per Code

Downtown

- 3-inch caliper streets trees placed at 25-foot intervals
- High density shrub palette based on CID design criteria if parkway available
- Electric conduit for future LED lighting elements/string lighting based on project scope
- City maintains landscaping per Code



Street Reconstruction Projects - Landscaping

Existing CID Landscape Administrative Procedures

Typical scenarios with street reconstruction projects for **local streets**:

Design incorporates new sidewalk and parkway landscape

- Residents support new landscape
- Residents don't support landscape (trees)

Design incorporates existing sidewalks but calls new parkway landscape

- Residents support new landscape
- Residents don't support landscape (trees)

Design incorporates existing sidewalks and landscaping (mature landscape)

- Residents support leaving existing landscape in place



Street Reconstruction Projects - Landscaping

Existing CID Landscape Administrative Procedures

The following factors are currently used to evaluate street tree and landscaping design for the street reconstruction and median enhancement projects:

- Design theme – trees and shrub palette selected based on CID Landscape Standards which incorporate “Great Streets”, green infrastructure and water harvesting, urban design, and place-making principles
- Neighborhood context
- Parkway width
- Soil type
- Public outreach



Street Reconstruction Projects - Landscaping

Existing CID Landscape Administrative Procedures



Pebble Hills



Street Reconstruction Projects - Landscaping

Existing CID Landscape Administrative Procedures



Montwood



Street Reconstruction Projects - Landscaping

Existing CID Landscape Administrative Procedures

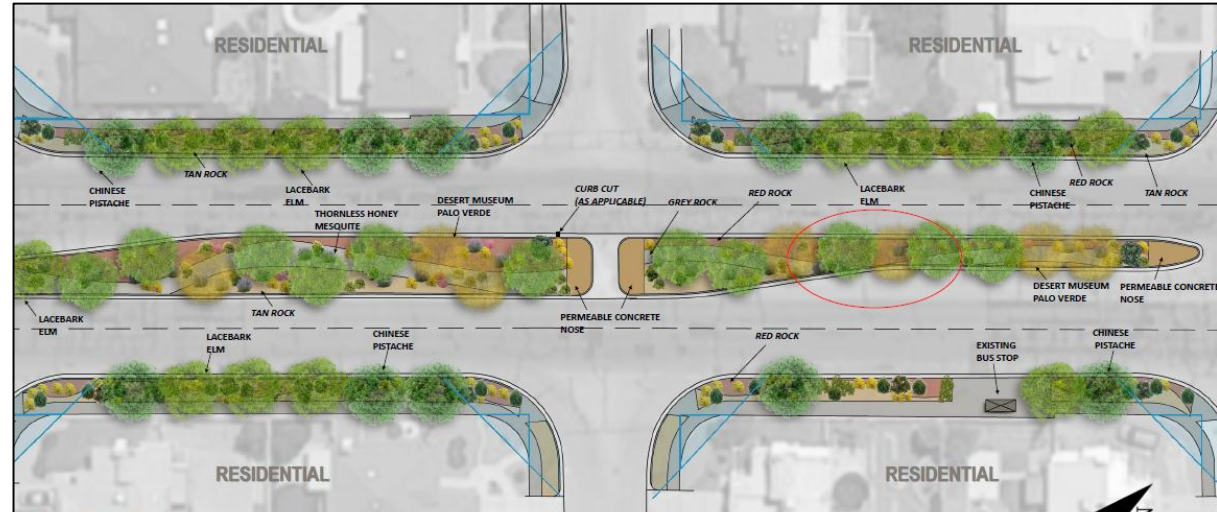


Santa Fe Street



Street Reconstruction Projects - Landscaping

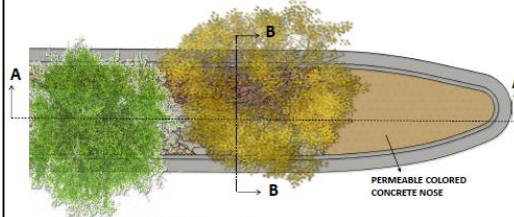
Existing CID Landscape Administrative Procedures



CONCEPT DESIGN-PLAN VIEW

* PLANTS ARE DEPICTED AT FULL MATURITY

PERMEABLE CONCRETE NOSE DETAIL

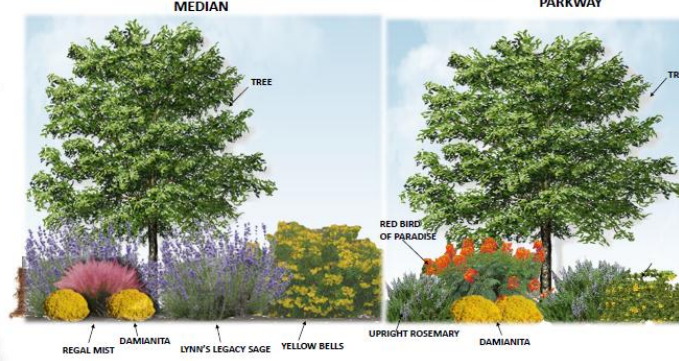


SECTION B-B THRU SWALE



SECTION A-A THRU SWALE

PROPOSED PLANT GROUPINGS



PROPOSED SHRUBS



PROPOSED TREES



PROPOSED LANDSCAPE MATERIAL



Redd Road
Median and
Parkway
Enhancements



REDD ROAD STREETSCAPE
REVISED PRELIMINARY CONCEPT DESIGN



Street Reconstruction Projects - Landscaping

Existing CID Landscape Administrative Procedures

The City Engineer is modifying the following internal procedures regarding street reconstruction projects for local streets (residential):

- CID will incorporate public input into the final determination on whether street trees and/or landscaping will be installed as part of a local street reconstruction project due to adjacent property owners being responsible for maintenance of landscaping

The City will continue installing street trees and high density landscaping on all arterial reconstruction and median enhancement projects as the City is responsible for maintenance of landscaping on arterials.