



Streets and Maintenance Department

Amendment to the City of El Paso Bike Plan to remove the designation for Resler Canyon



Streets and Maintenance Department

Strategic Plan Goal:

7) Enhance and Sustain El Paso's Infrastructure Network



Streets and Maintenance Department

Purpose For Council Action

- Resler Canyon has a designation in the City of El Paso Bike Plan for a proposed bike facility.
 - Resler Canyon is private property, owned and managed by The Frontera Land Alliance, a local non-profit 501(c)3 nationally-accredited land trust.
 - A general warranty deed and restrictive covenants restrict improvements over Resler Canyon.
- The City of El Paso Bike Plan was adopted via ordinance in August of 2016. Today's action would remove the current Bike Plan bicycle facility designation for Resler Canyon by way of an amended ordinance.
- The Bicycle Advisory Committee voted on November 14, 2018 to recommend approval of the Bike Plan modification as it pertains to Resler Canyon 4-1 with one member abstention.
- The City Plan Commission unanimously carried on December 20, 2018 to recommend support to City Council of the modification as it pertains to Resler Canyon.



Streets and Maintenance Department



El Paso Bike Plan Atlas

Legend

Existing Bicycle Facilities

- Shared Lane Markings
- Shoulder Bikeway
- Bike Lane
- Buffered Bike Lane
- Shared Use Path

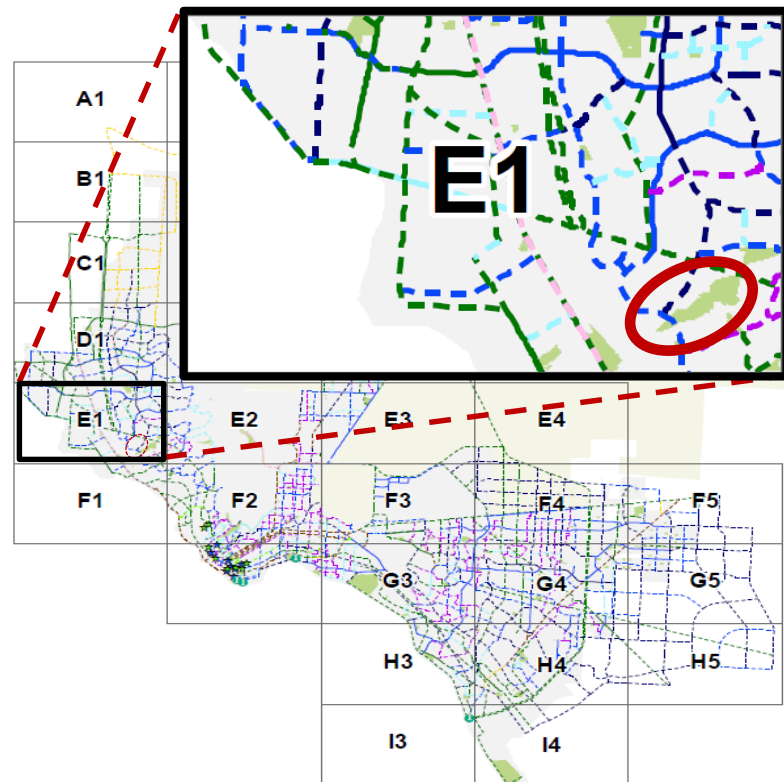
Proposed Bicycle Facilities

- Signed Shared Roadway
- Shared Lane Markings
- Bicycle Boulevard
- Shoulder Bikeway
- Bike Lane
- Buffered Bike Lane
- Protected Bike Lane / Cycle Track
- Two-Way Cycle Track
- Shared Use Path
- Further Study Needed

Other Features*

- SunCycle Bike Share Station (Existing)
- SunCycle Bike Share Station (Planned)
- School
- El Paso Community College Campus
- Public Housing
- International Bridge/Port of Entry
- Waterways
- Parks
- City of El Paso
- Fort Bliss

* Not all features displayed on Atlas Index to the right.





Streets and Maintenance Department



El Paso Bike Plan Atlas

Legend

Existing Bicycle Facilities

- Shared Lane Markings
- Shoulder Bikeway
- Bike Lane
- Buffered Bike Lane
- Shared Use Path

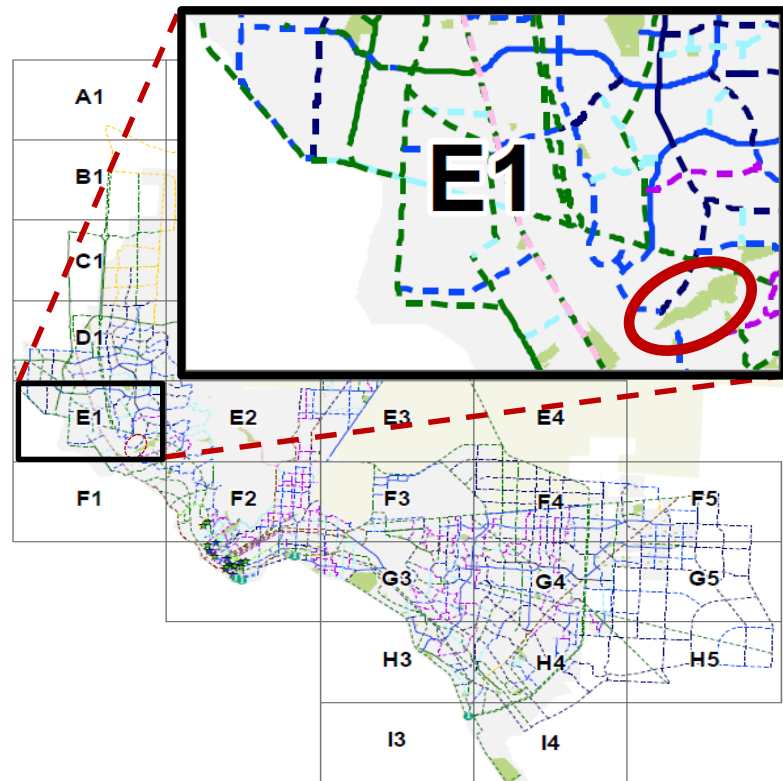
Proposed Bicycle Facilities

- Signed Shared Roadway
- Shared Lane Markings
- Bicycle Boulevard
- Shoulder Bikeway
- Bike Lane
- Buffered Bike Lane
- Protected Bike Lane / Cycle Track
- Two-Way Cycle Track
- Shared Use Path
- Further Study Needed

Other Features*

- SunCycle Bike Share Station (Existing)
- SunCycle Bike Share Station (Planned)
- School
- El Paso Community College Campus
- Public Housing
- International Bridge/Port of Entry
- Waterways
- Parks
- City of El Paso
- Fort Bliss

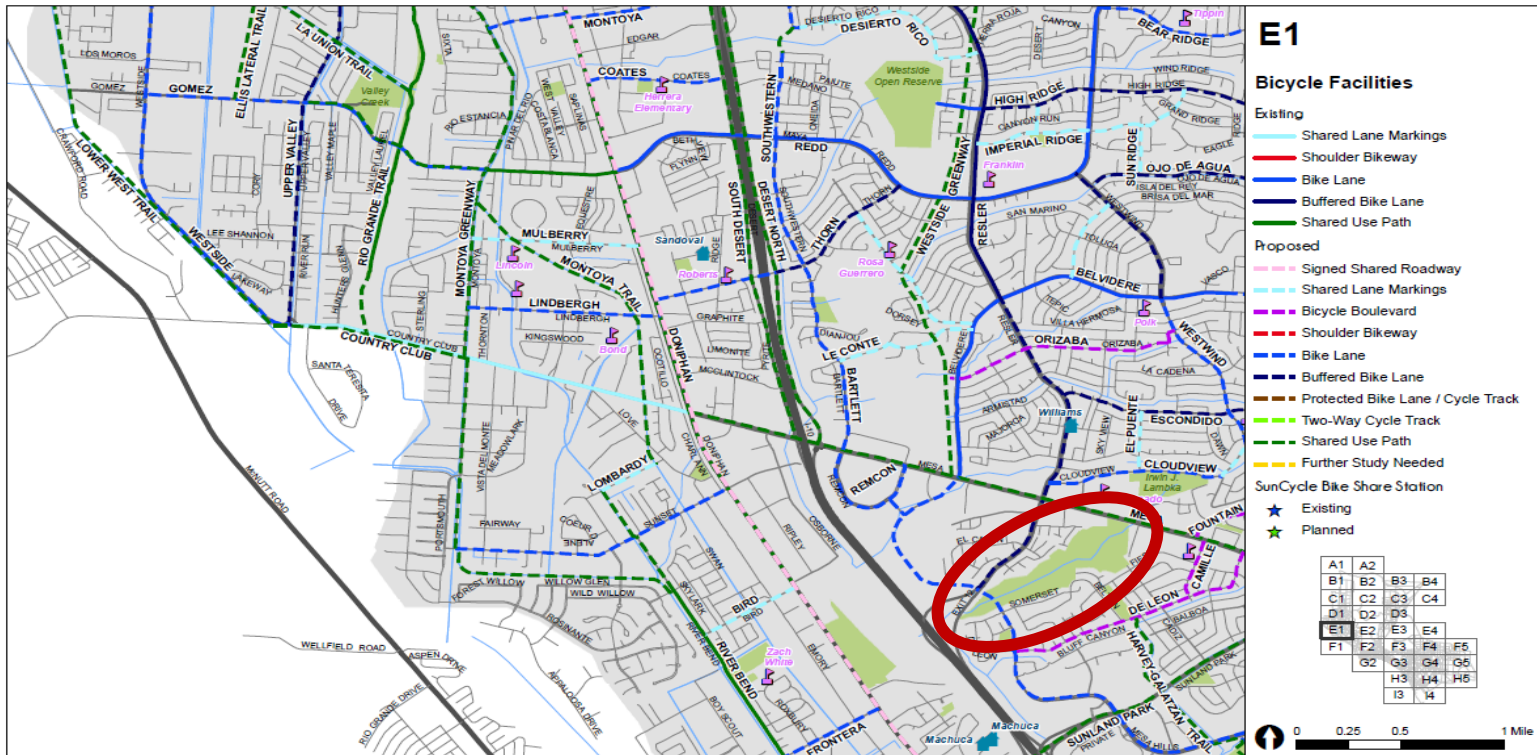
* Not all features displayed on Atlas Index to the right.





Streets and Maintenance Department

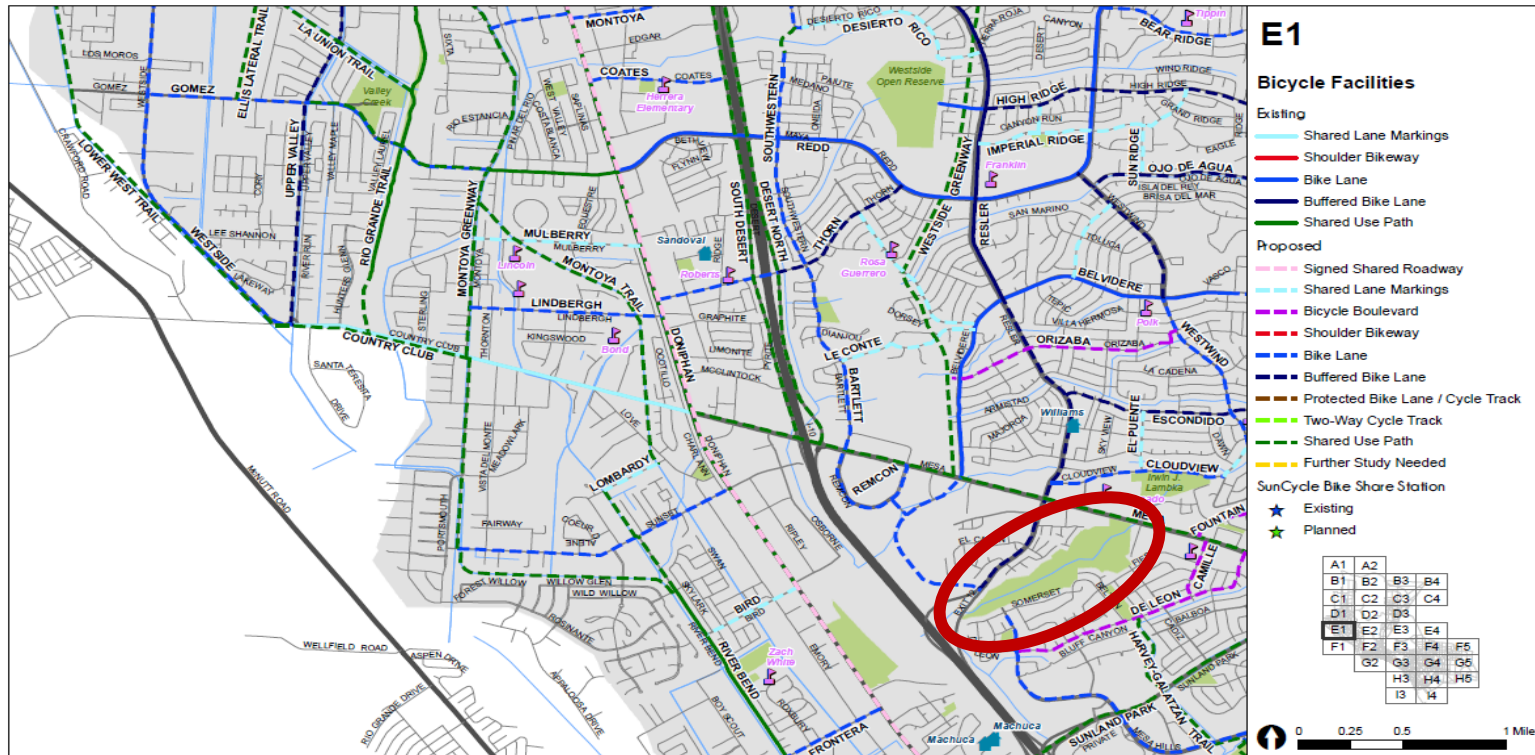
Red circle shows the current Bike Plan designation over Resler Canyon.





Streets and Maintenance Department

Red circle shows the removal of the current Bike Plan designation over Resler Canyon.





Streets and Maintenance Department

Requested Council Action

- Approval of an ordinance amendment to remove Resler Canyon from the City of El Paso Bike Plan



Streets and Maintenance Department

Questions & Comments