



Paso del Norte Trail Resolution

Tracy Novak
Parks and Recreation Department
City Of El Paso



"Delivering Outstanding Services"



Strategic Goals Addressed

- **Goal 1:** Cultivate an environment conducive to strong economic development
 - 1.2: Enhance visitor revenue opportunities
 - Catalyze eco-tourism as an economic development driver
- **Goal 3:** Promote the visual image of the city
- **Goal 4:** Enhance El Paso's quality of life through recreational, cultural, and educational environments
- **Goal 7:** Enhance and sustain El Paso's infrastructure network
- **Goal 8:** Nurture and promote a healthy sustainable community

- Spur economic development
- Provide recreational opportunities
- Improve community health
- Enhance transportation options

Vision for PDN Trail



Arizona Grand Canal Trail



Katy Trail - Dallas

**Urban Land Institute
Rendering for Franklin Canal**



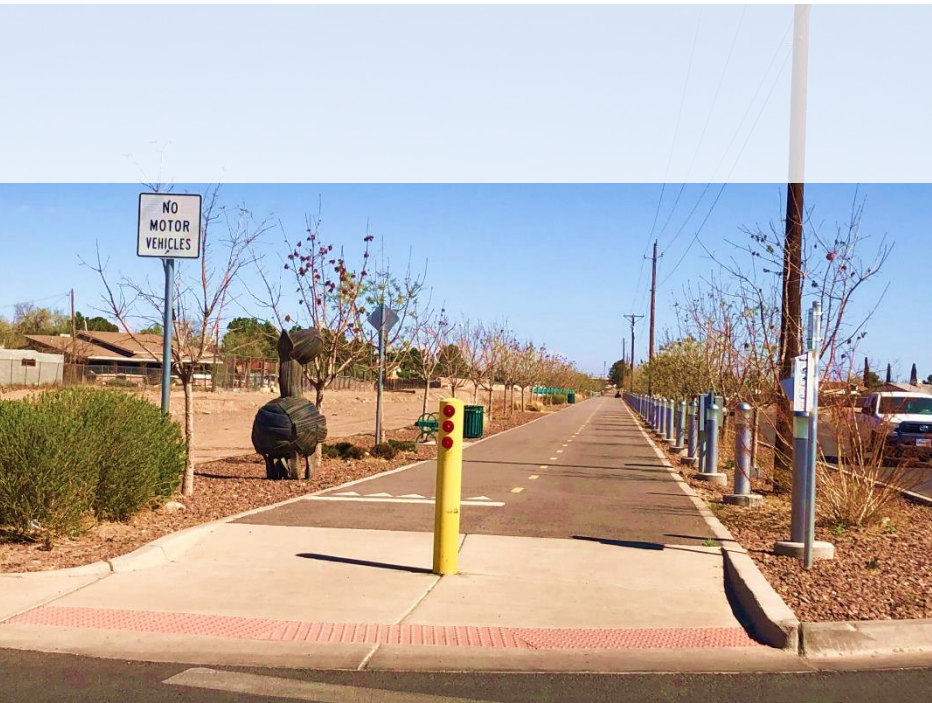
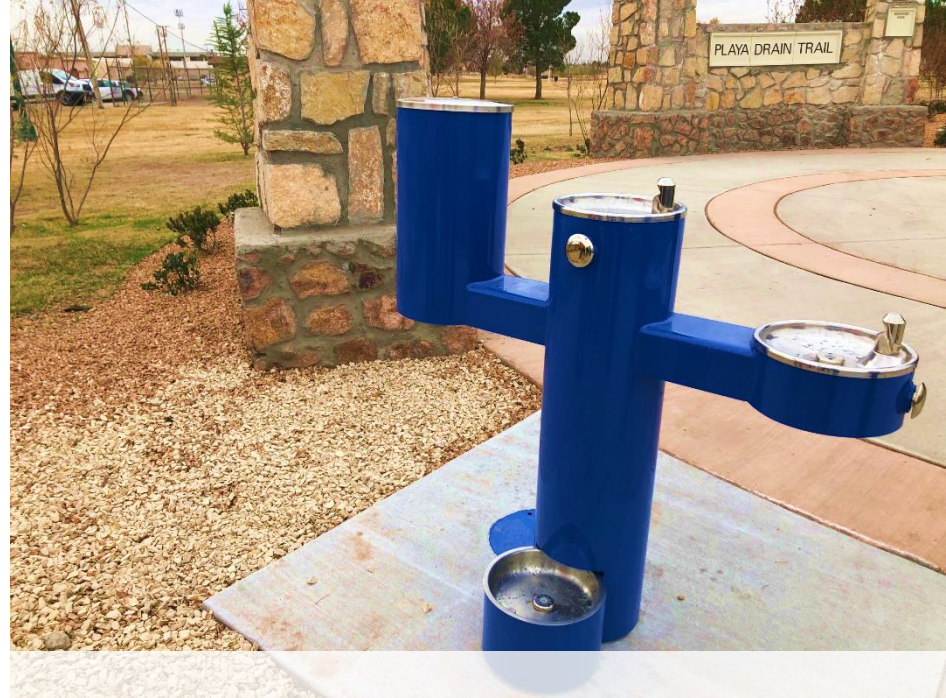
Atlanta Beltline





Completed Segments







PDN Trail Master Plan

- **Funded by the Paso del Norte Health Foundation**
 - Technical assistance provided by the National Park Service Rivers, Trails and Conservation Assistance Program
 - Developed between May 2017 and October 2018 with extensive public outreach, including social media, public meetings, interviews with community and agency stakeholders, and a community survey
 - Developed in cooperation with multiple stakeholder organizations including government, schools, neighborhood associations, private businesses and nonprofit organizations





Overview: PDN Trail

Upper Valley District

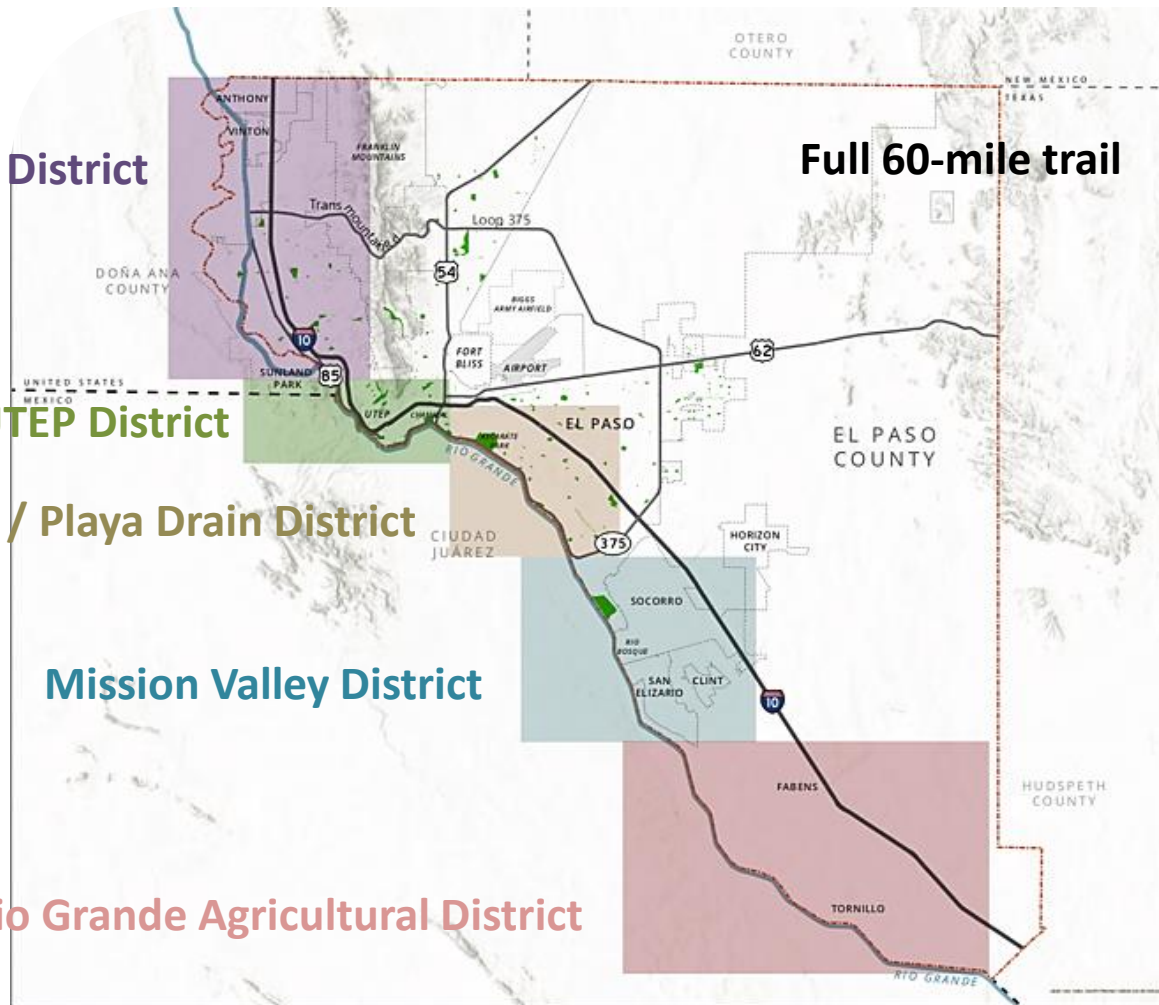
Downtown/ UTEP District

Zoo / Playa Drain District

Mission Valley District

Rio Grande Agricultural District

Full 60-mile trail



LEGEND

- Municipal Boundaries
- El Paso County Boundary
- International/State Boundary

TRAIL SEGMENT AREAS

- Upper Valley District
- Downtown/UTEP District
- Zoo/Playa Drain District
- Mission Valley District
- Rio Grande Agricultural District



"Delivering Outstanding Services"



Percentage of Ownership

	Length (miles)	Length (% of full trail)
City of El Paso	28.27	41%
El Paso County	18.47	27%
Socorro	7.77	11%
Canutillo	5.22	8%
San Elizario	3.18	5%
Fabens	2.59	4%
Vinton	1.39	2%
Anthony	1.31	2%
Sunland Park	0.76	1%
TOTAL (PDN Trail)	68.96	



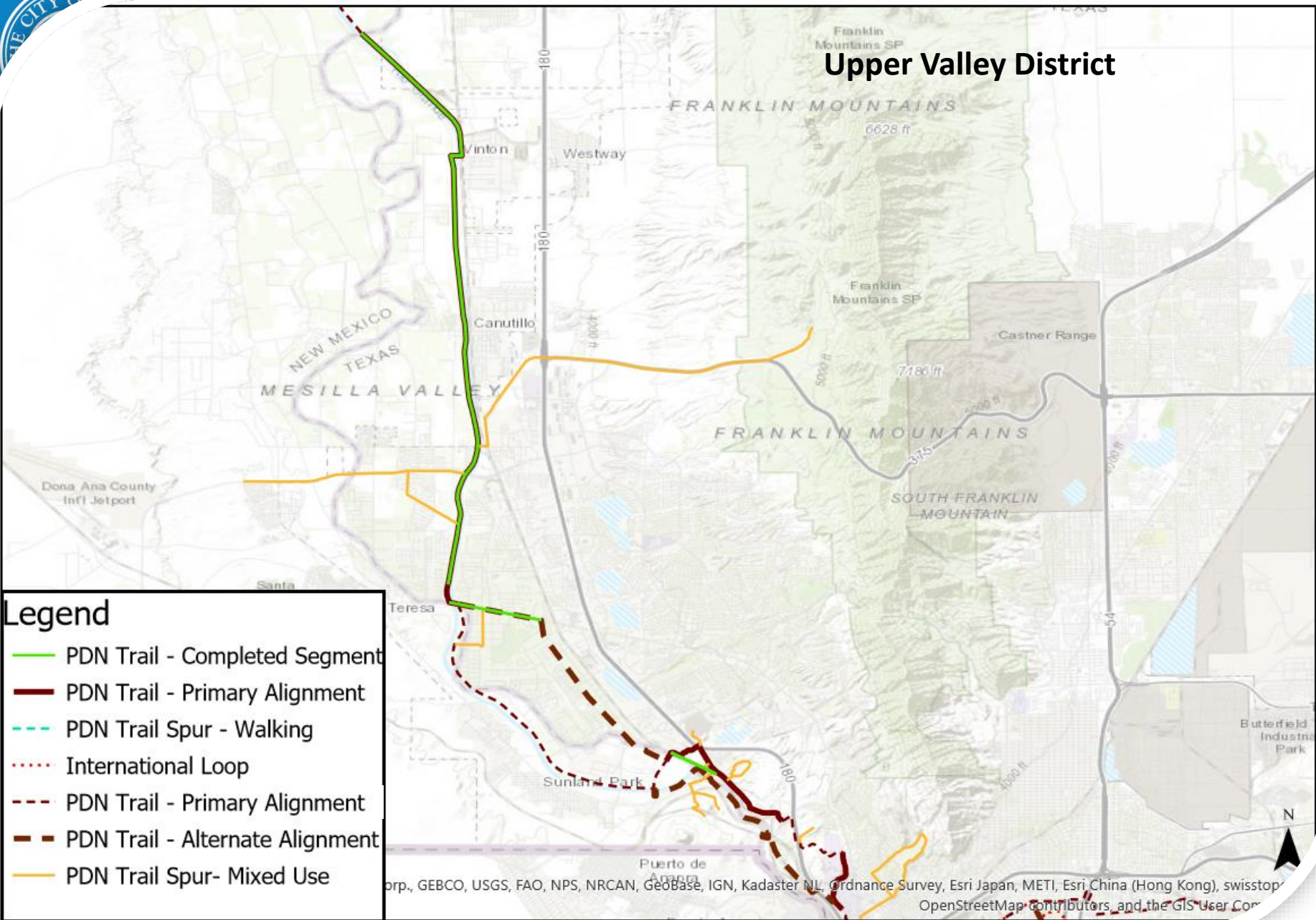
Resolution

- **Requesting approval of a resolution in support of overall trail**
 - WHEREAS, a goal of the Paso del Norte Trail is that it be a **destination-worthy trail** that functions as a local recreation and transportation trail and becomes a place of pride and positive focus for El Paso County; and
 - WHEREAS, the Paso del Norte Trail will serve as a **cornerstone for future trails**, which supports the City of El Paso's vision for eco-tourism and recreational opportunities
 - **Request:** That the Mayor and City Council officially **endorse the implementation of the Paso del Norte Trail.**

Thank you!



Upper Valley District



Legend

- PDN Trail - Completed Segment
- PDN Trail - Primary Alignment
- - - PDN Trail Spur - Walking
- · · International Loop
- - - PDN Trail - Primary Alignment
- - - PDN Trail - Alternate Alignment
- PDN Trail Spur - Mixed Use

corp., GEBCO, USGS, FAO, NPS, NRCAN, Geobase, IGN, Kadaster NL, Ordnance Survey, Esri Japan, METI, Esri China (Hong Kong), swisstopo, OpenStreetMap contributors, and the GIS User Community



Downtown /UTEP District



UTEP SUB-DISTRICT



KEY MAP

POINTS OF INTEREST

- Old Fort Bliss/Hart's Mill
- UTEP Campus Connection
- Montoya Drain Wetland (Proposed)
- Chamizal National Monuments
- Catholic Church
- Sunset Heights Park
- San Jacinto Plaza
- Paseo de las Luces
- El Paso Art Museum

LEGEND

- International Loop Trail
- PDN Spine Alignment (Existing or Funded)
- PDN Spine Alignment (Proposed)
- PDN Loop Alignment
- PDN Spur Trail
- PDN Walking Trail
- Historic Camino Real
- Transportation Transfer Center
- Point of Interest
- School
- Trail Head
- El Paso City Limits
- Iconic Bridge Opportunity
- Parks
- Rio Grande





KEY MAP

POINTS OF INTEREST

- Old Fort Bliss/Hart's Mill
- UTEP Campus Connection
- Montaya Drain Wetland (Proposed)
- Chamizal National Monuments
- Catholic Church
- Sunset Heights Park
- San Jacinto Plaza
- Paseo de las Luces
- El Paso Art Museum



LEGEND

- International Loop Trail
- PDN Spine Alignment (Existing or Funded)
- PDN Spine Alignment (Proposed)
- PDN Loop Alignment
- PDN Spur Trail
- PDN Walking Trail
- Historic Camino Real
- Transportation Transfer Center
- Point of Interest
- School
- Trail Head
- El Paso City Limits
- Iconic Bridge Opportunity
- Parks
- Rio Grande



Zoo/ Playa Drain District



KEY MAP

POINTS OF INTEREST

- El Paso Zoo
- Ascarate Park
- Medical Campus of the Americas

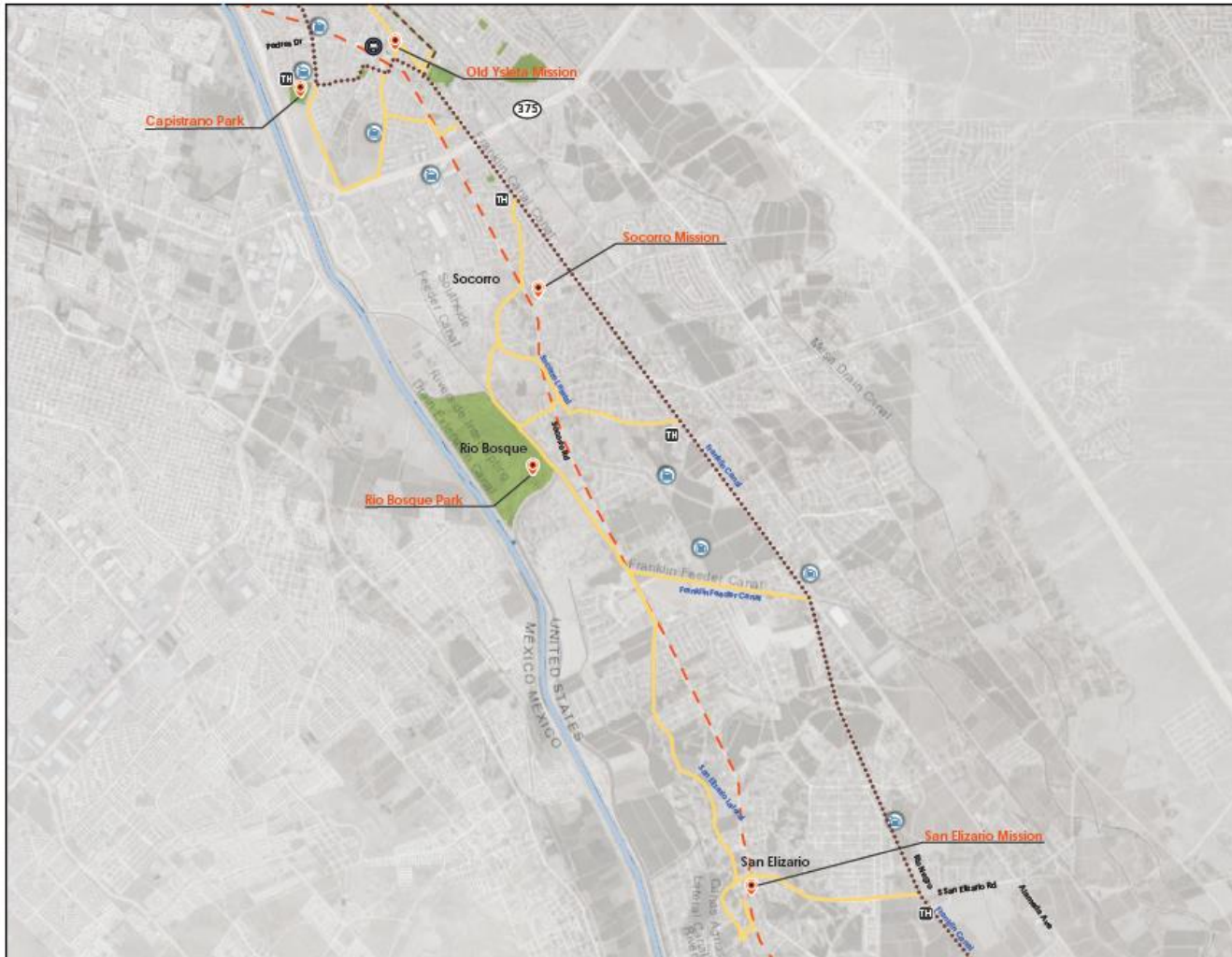
LEGEND

- PDN Spine Alignment (Proposed)
- PDN Spine Alignment
- PDN Loop Alignment
- PDN Spur Trail
- Historic Camino Real
- Transportation Transfer Center
- Point of Interest
- School
- Trail Head
- El Paso City Limits
- Parks
- Rio Grande





Mission Valley District



KEY MAP

POINTS OF INTEREST

- Historic Missions
- Rio Bosque Park
- Capistrano Park

LEGEND

- PDN Spine Alignment (Existing or Funded)
- PDN Spine Alignment (Proposed)
- PDN Loop Alignment
- PDN Spur Trail
- Historic Camino Real
- Transportation Transfer Center
- Point of Interest
- School
- Trail Head
- El Paso City Limits
- Parks
- Rio Grande



“Delivering Outstanding Services”



Rio Grande Agricultural District



KEY MAP

POINTS OF INTEREST

- County Line Lakes
- Agricultural Towns
Clint, Fabens, Tornillo

LEGEND

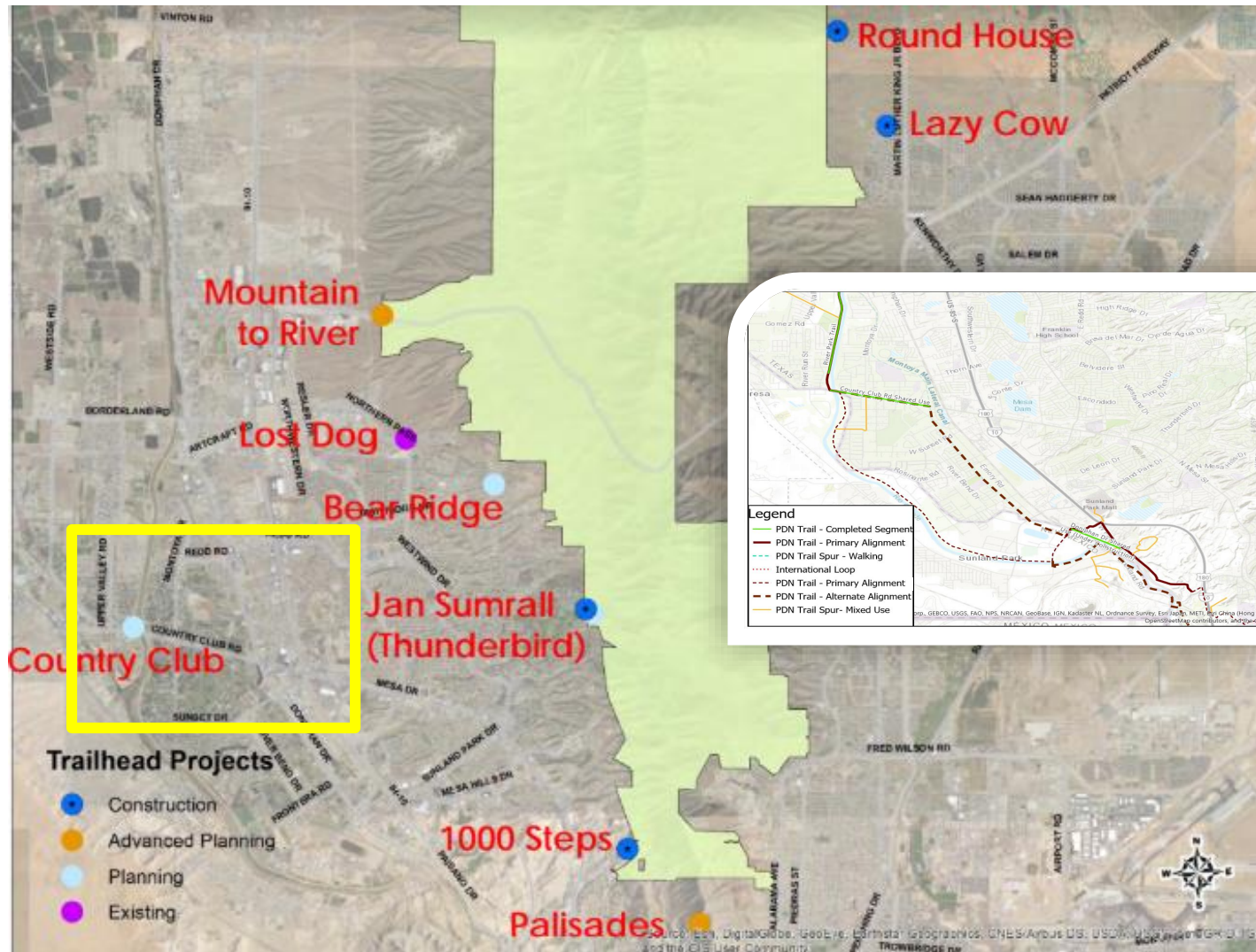
- PDN Spine Alignment (Existing or Funded)
- PDN Spine Alignment (Proposed)
- PDN Spur Trail
- Historic Camino Real
- Transportation Transfer Center
- Point of Interest
- School
- Trail Head (Proposed)
- El Paso City Limits
- Parks
- Rio Grande



"Delivering Outstanding Services"



Existing Efforts

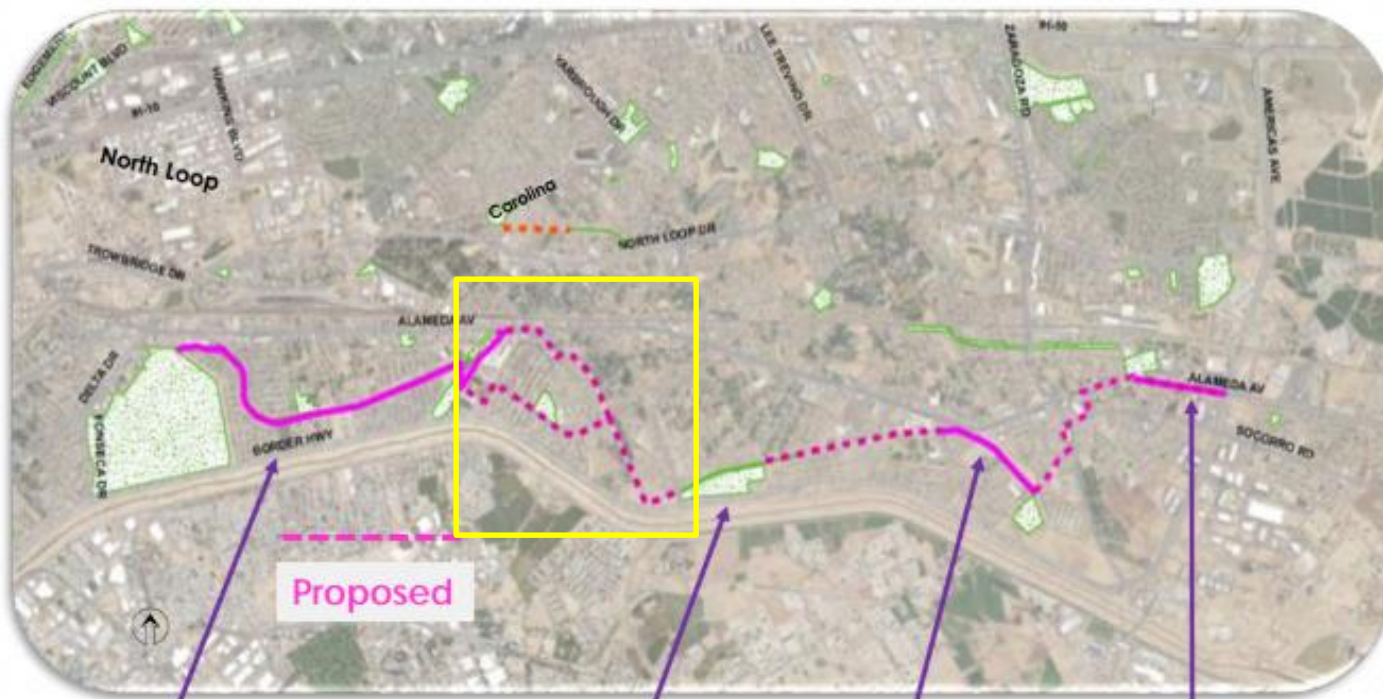




Existing Efforts



Playa Drain and Carolina



PDNHF

TxDOT

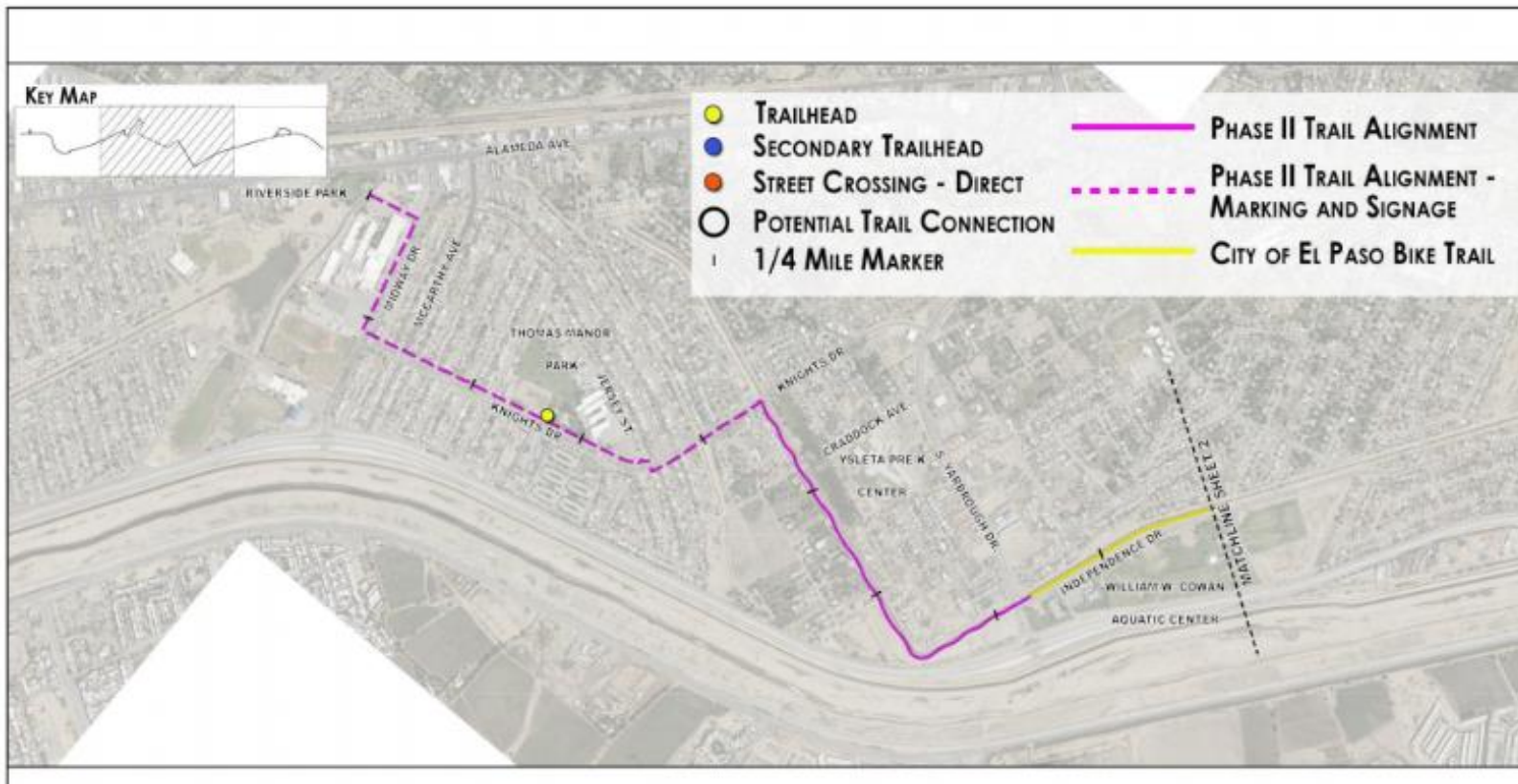
CDBG

PDNHF
TxDOT
EPCWID1

"Delivering Outstanding Services"



Existing Efforts





Existing Efforts

- **Paved Trails Programming**

Project	District	Budget	FY2019	FY2020+
Playa Drain Ascarate Amenities (V)	3	\$300,000	Complete	
Mountain To River Trail (Design, Construction, Land Acquisition) Natural Surface	1	\$725,000	Design and Construction	
Sunset Terrace Extension	1	\$100,000	Design and Construction	
Sunset Terrace Bridges (W)	1	\$200,000	Predesign	
Tierra Del Este	5	\$355,000	Design and Construction	
Valley Creek (Mary Frances Keisling) Access To River Trail (X)	1	\$81,000	Predesign	
Rio Grande Trail (connect to Country Club Rd.)	1	\$155,000	Predesign	
Westside Community Park Enhancements	1	\$75,000		Programmed
El Paso Electric (EPE) Corridor (Design) Donald To Dyer (Y)	4	\$315,000		TBD
Ellis Lateral (Z)	1	\$315,000		TBD
Carolina To Emerson (El Paso County Water Improvement District 1) (Z)	6	\$342,000		TBD
EPE (D,C) Montana to IH 10 Segment A-D (Y)	3, 5, 6, 7	\$1,750,000		TBD
EPE (D,C) Skyline to Loma Real Segment A-D (Y)	4	\$1,260,000		TBD

V = Paso Del Norte Health Foundation funded construction
 W = Revisit scope
 X = Coordination with IBWC and El Paso Water Improvement District #1
 Y = Coordination with El Paso Electric
 Z = Coordination with El Paso County Water Improvement District

Quality of Life Bond allocated \$6M



Arizona Grand Canal Trail



Arizona Grand Canal Trail



Arizona Grand Canal Trail



Arizona Grand Canal Trail





Riverbend Trail (image courtesy of PSC)



Rendering Provided By Urban Land Institute (November 2016)

