

# CITY OF EL PASO

# PLAYA DRAIN TRAIL

# PHASE II - DESIGN

in partnership with El Paso Water Utilities and  
Paso del Norte Health Foundation



PASO DEL NORTE  
HEALTH FOUNDATION

1



# City of El Paso Strategic Plan

**STRATEGIC GOAL 4: Enhance El Paso's  
Quality of Life through Recreational,  
Cultural and Educational Environments**

# Playa Drain Trail - Prior Actions

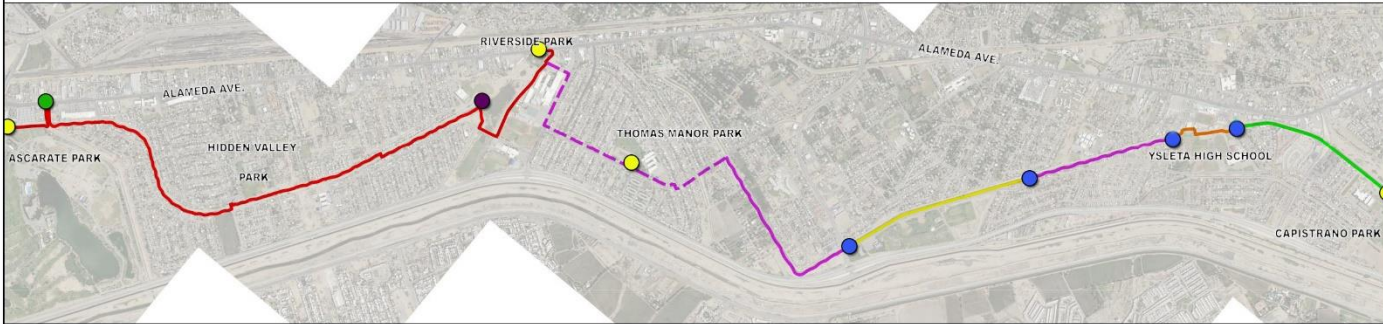
- ▶ Playa Drain Trail envisioned as continuous trail for many years
- ▶ 2012 Quality of Life Bond funds trail improvements (\$6,000,000 over 10 years)
- ▶ 2016 - Public Service Board (PSB) purchases Playa Drain and becomes sole owner
- ▶ November 3, 2016 - PSB enters into agreement with City allowing trail improvements
- ▶ October 1, 2013 and March 7, 2017 - City Council approved \$300,000 for trail improvements, from Ascarate Park to Riverside Park, along Playa Drain
- ▶ November 8, 2018 - Playa Drain Completed.
- ▶ Total of 6.4 miles completed to date



# Playa Drain Trail History

- ▶ The Playa Drain Trail Phase I extends 3.4 miles from Ascarate Park to Riverside Park
  - ❑ Constructed by PDNHF with \$2.5 Million of donated funds, matched with City's \$300,000
- ▶ City has built two additional sections
  - ❑ Independence Drive Trail (MPO)
  - ❑ Ysleta to Capistrano Trail (CDBG)

# Overall Playa Drain Trail



- TRAILHEAD
- SECONDARY TRAILHEAD
- OVERLOOK
- CULVERT CROSSING

- Ascarate Park to Riverside High School (Complete)
- Riverside High School to Ysleta High School (New Paving 8,345 LF)
- - - Riverside High School to Ysleta High School (Marking and Signage)
- Ysleta High School Trail (1,848 LF)
- Independence Drive Bike Trail (Complete)
- Ysleta High School to Capistrano Park (Complete)

OVERALL TRAIL ALIGNMENT  
PLAYA DRAIN TRAIL  
CITY OF EL PASO  
JANUARY 30, 2019

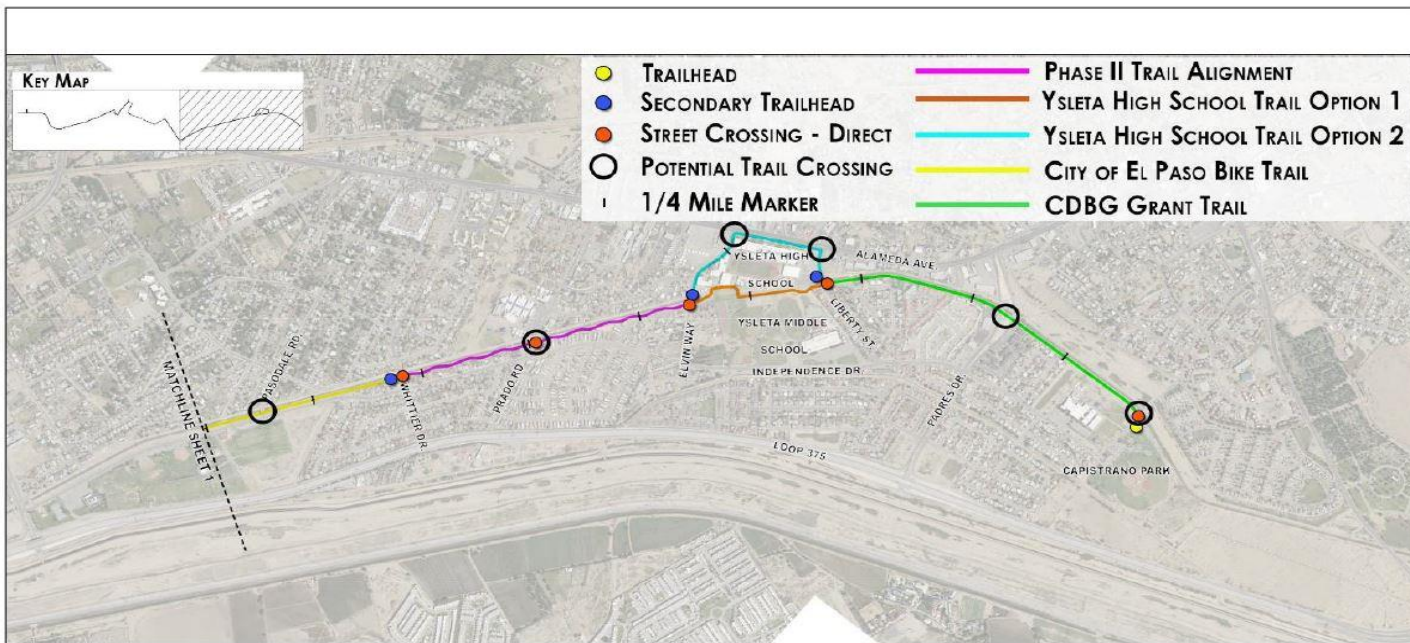


Meridian Green Works, LLC

# Playa Drain Trail Phase II

- ▶ Phase II Alignment
  - ❑ Final 3.4 miles of the 8.3 mile Playa Drain Trail
  - ❑ Riverside Park (Whittier Drive) to Ysleta High School (Liberty Street)
- ▶ PDNHF to donate up to \$150,000 to provide plans and specifications ready to bid and construct 3.4 mile segment
- ▶ PDNHF seeking grants and partnerships to fund construction

# Phase Two Project Limits



## PHASE II TRAIL ALIGNMENT - SHEET 2

PLAYA DRAIN TRAIL  
TRAIL AMENITY OPTIONS  
CITY OF EL PASO  
JULY 13, 2016



111%



500' 1000' 2000'  
SCALE: 1" = 1000' 0"



Meridian Green Works, LLC

# Recommendation

## **Proposed City Agreement with PDNHF:**

- ▶ a Resolution that City Manager be authorized to sign a Donation Agreement with Paso Del Norte Health Foundation for the donation of design services to develop plans and specifications for the Playa Drain Trail Phase II, from Riverside HS (Whittier Drive) to Ysleta HS (Liberty Street).

# Questions and Comments

