

A nighttime photograph of a cityscape with a mountain range in the background. The sky is a mix of dark blue and orange, suggesting a sunset or sunrise. The city lights are visible in the foreground, and a large, glowing starburst graphic is positioned behind the text.

ITEM 5.2 Detailed Site Development Plan

Recommendation | Public Input

2

Planning/DCC recommendation:

Approval of the detailed site development plan and setback reduction request.

CPC Vote:

Approval Recommendation (5-0)

Public Input:

- Notice of a Public Hearing was mailed to all property owners within 300 feet of the subject property on March 22, 2019. Planning staff has not received calls in opposition or support about the detailed site development plan/request to waive setback requirements in the S-D (Special Development) Zoning District.

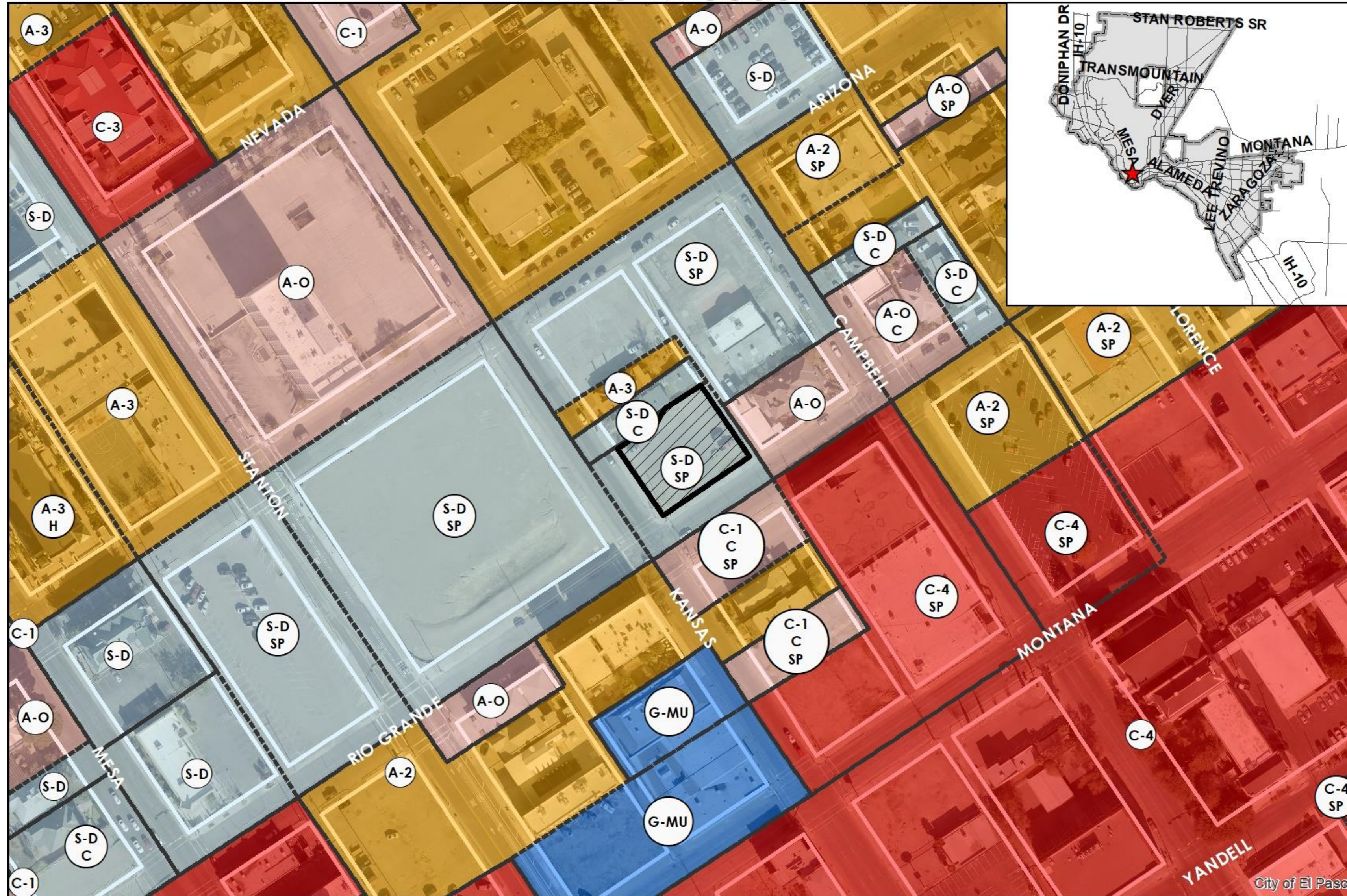
Strategic Goal #3 Promote the Visual Image of El Paso

3.1 Provide business friendly permitting and inspection processes

3.2 Improve the visual impression of the community



PZDS19-00007



This map is designed for illustrative purposes only. The features depicted here are approximate and more site-specific studies may be required to draw accurate conclusions. Enlargements of this map to scales greater than its original can induce errors and may lead to misinterpretations of the data. The Planning & Inspections Department Planning Division makes no claim to its accuracy or completeness.



 Subject Property



PZDS19-00007

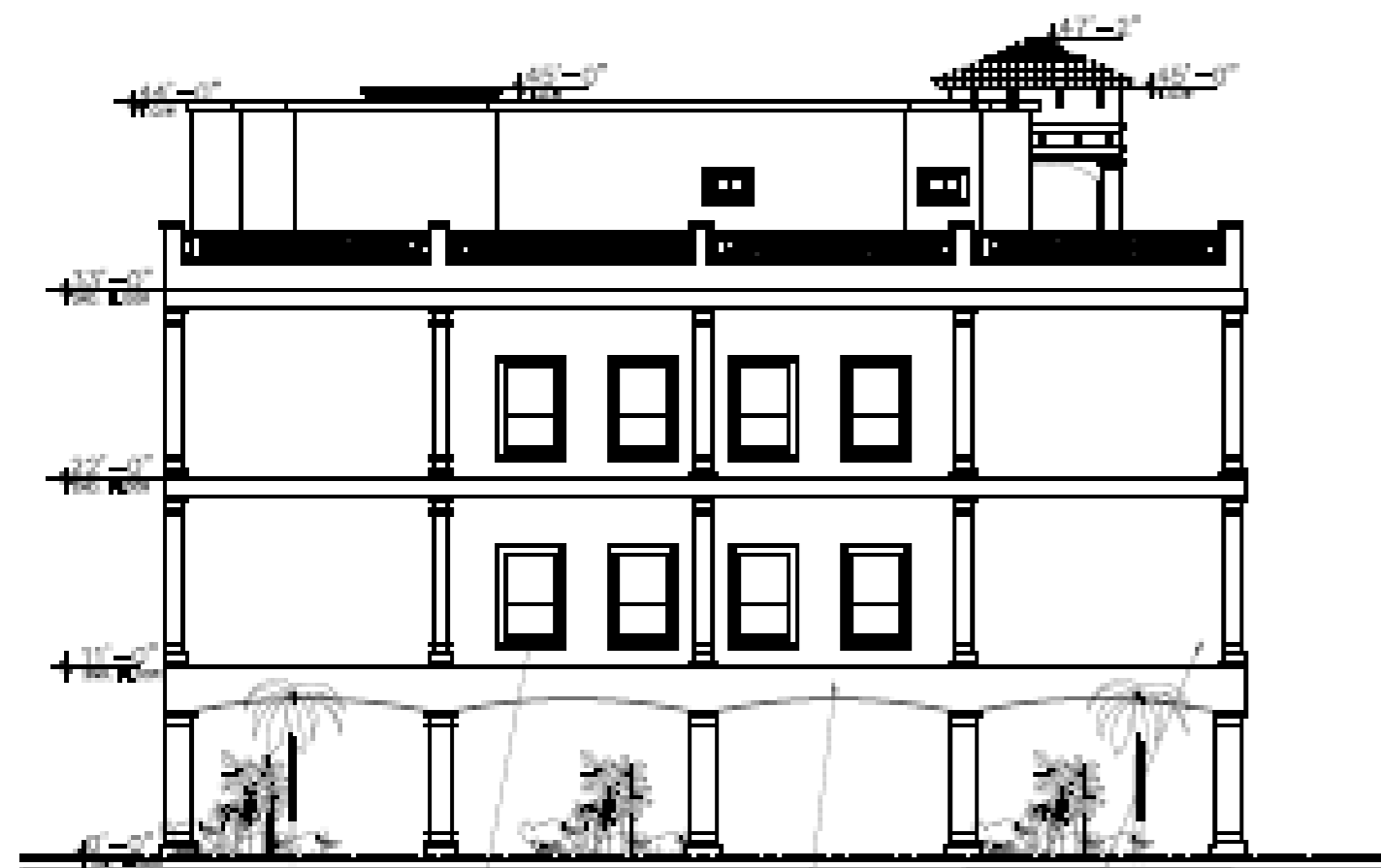


This map is designed for illustrative purposes only. The features depicted here are approximate and more site-specific studies may be required to draw accurate conclusions. Enlargements of this map to scales greater than its original can induce errors and may lead to misinterpretations of the data. The Planning & Inspections Department Planning Division makes no claim to its accuracy or completeness.



 Subject Property





INSUL. ALUMINUM
WINDOWS TYPICAL AS
SELECTED BY OWNER

STUCCO FIN. SYSTEM
COLOR AS SELECTED
BY OWNER

LEFT SIDE ELEVATION

SCALE: 3/16" = 1' - 0"



INSUL. ALUMINUM
WINDOWS TYPICAL AS
SELECTED BY OWNER

W. IRON GUARD
RAILING AS SELECTED
BY OWNER

STUCCO FIN. SYSTEM
COLOR AS SELECTED
BY OWNER

FRONT ELEVATION

SCALE: 3/16" = 1' - 0"

Rendering



PZDS19-00007



This map is designed for illustrative purposes only. The features depicted here are approximate and more site-specific studies may be required to draw accurate conclusions. Enlargements of this map to scales greater than its original can induce errors and may lead to misinterpretations of the data. The Planning & Inspections Department Planning Division makes no claim to its accuracy or completeness.



Subject Property

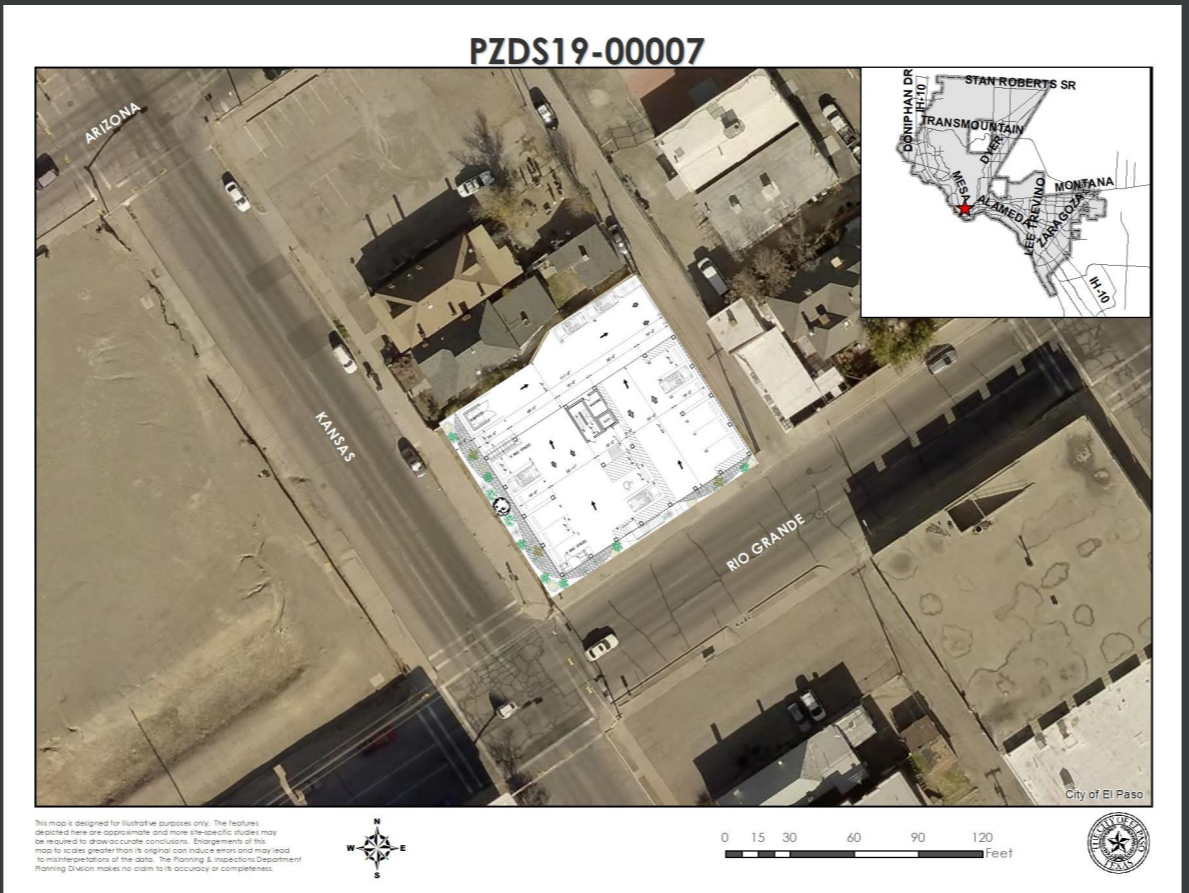




N



W



S



E



THANK YOU

