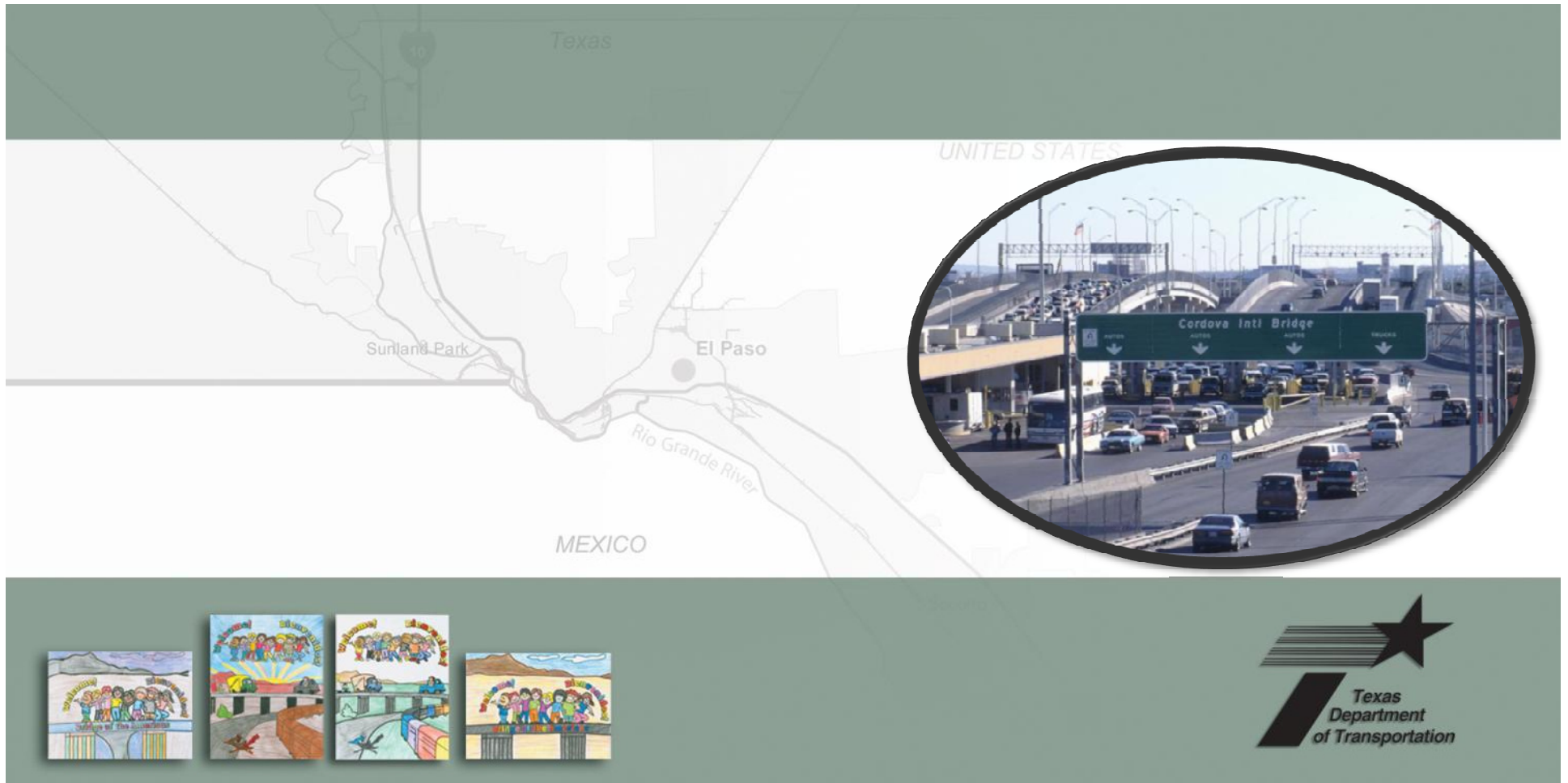


El Paso Regional POE Operations Plan



**El Paso City Council
May 10, 2011**



El Paso Regional POE Operations Plan

Today's Agenda

- Our Charge
- Our Approach
- Our Initial Findings
- Our Next Steps





El Paso Regional POE Operations Plan

Our Charge

- Review all existing ports of entry (POE) within the El Paso region, from *Santa Teresa, New Mexico to the Tornillo/Guadalupe POE*
- Analyze how these POEs currently function *individually and as a system*
- Assess their ability to handle future demand under a number of different *operational scenarios*
- Develop immediate, short-term, mid-term, and long-term recommendations to improve cross-border mobility in the region that are *consistent with local needs and issues*





El Paso Regional POE Operations Plan

Our Approach

Describe Existing Conditions

Identify Potential Solutions

Test and Evaluate Potential Solutions

Develop Recommendations for Regional Leadership

Public and Stakeholder Outreach





El Paso Regional POE Operations Plan

Describe Existing Conditions

- ***Outreach*** activities to understand border crossing needs and issues
 - » Public Opinion Survey
 - » Targeted Interviews/Focus Groups
 - » Public Meetings & Stakeholder Briefings
- ***Model development*** activities to describe transportation network and traffic flows
- ***Technical analysis*** activities to describe population, economic, industry trends that influence border crossing demand

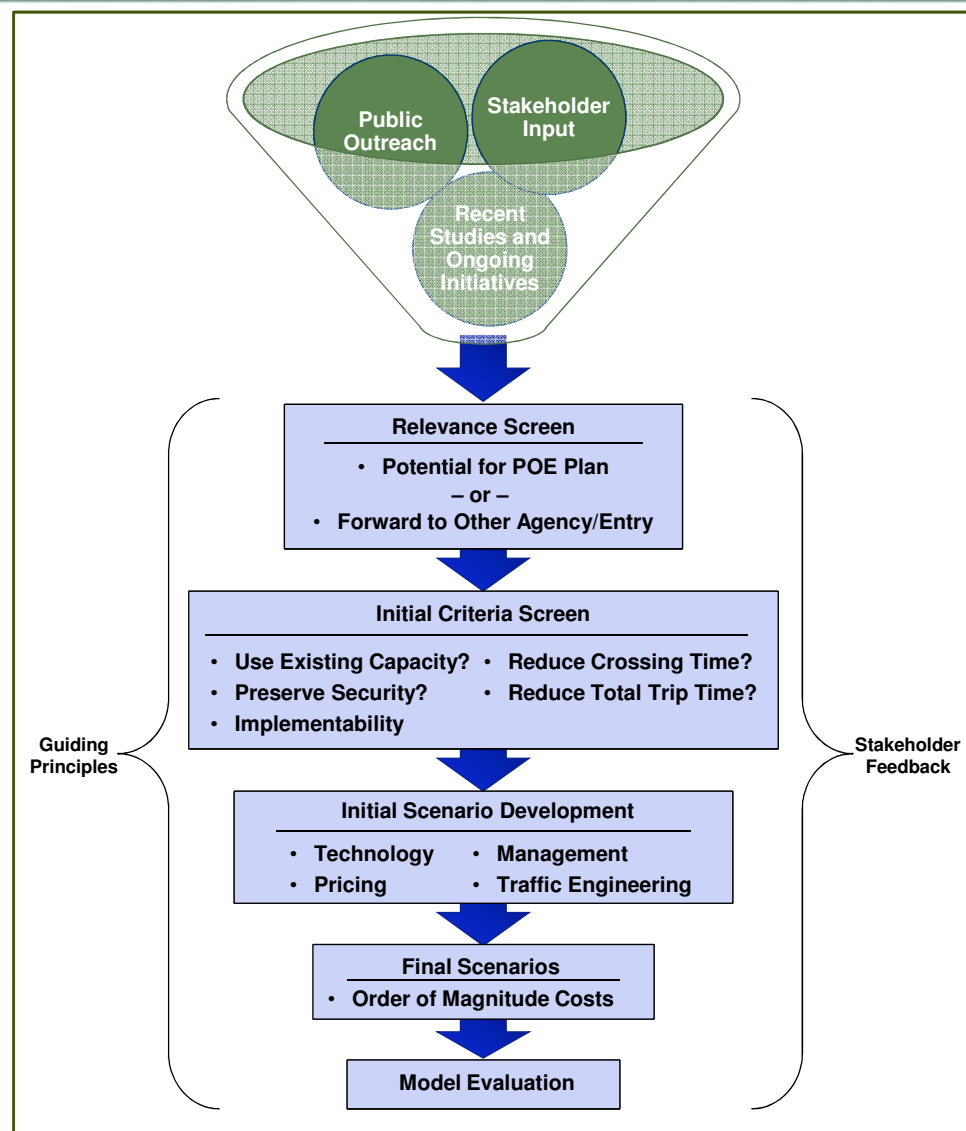




El Paso POE Operations Plan

Identify Potential Solutions

- Projects identified from several sources, including public outreach
- 150+ projects, strategies, and initiatives screened using criteria derived from public involvement activities
- Projects grouped into “scenarios” for model evaluation





El Paso POE Operations Plan

Identify Potential Solutions (cont.)

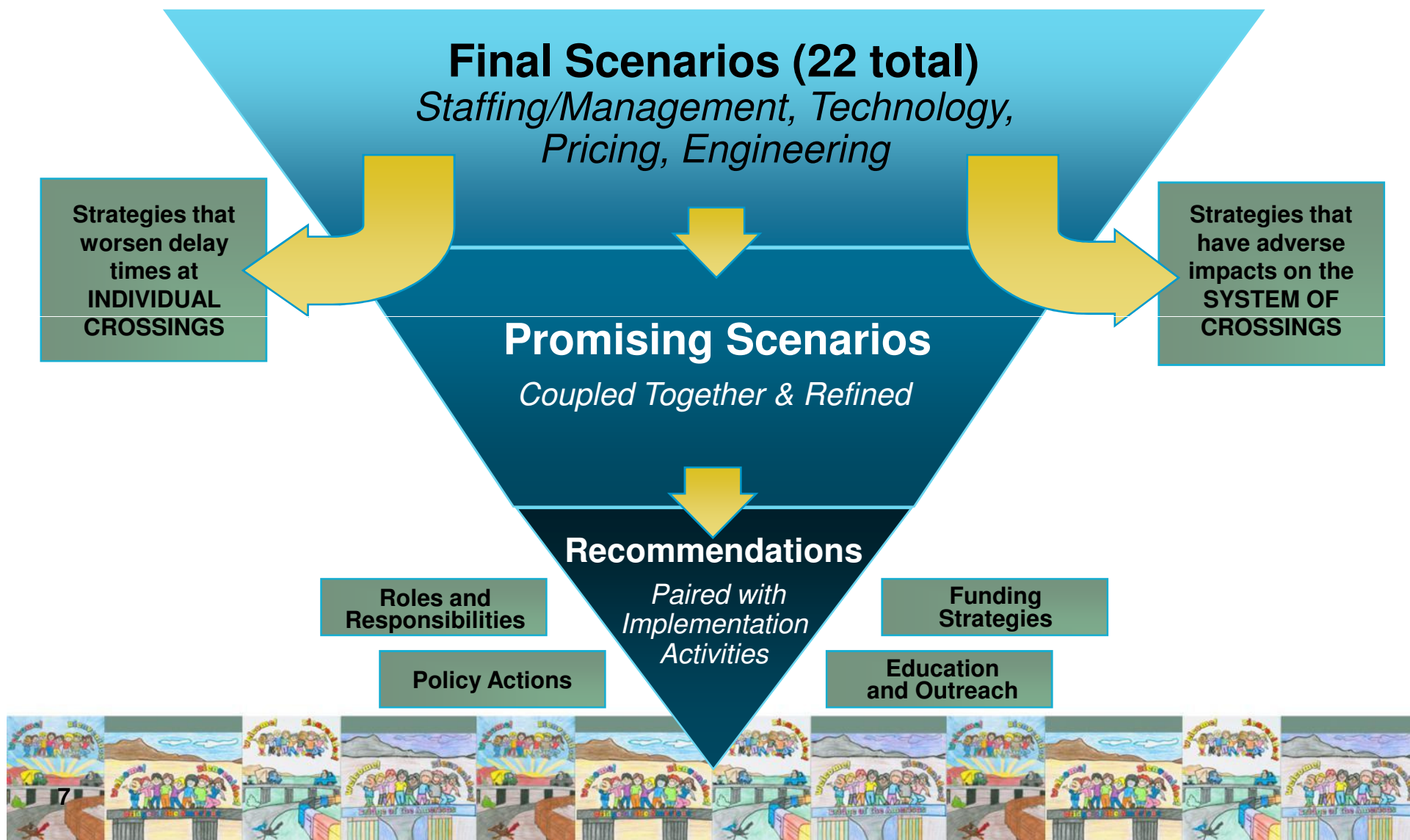
- Screening process resulted in the development of 22 scenarios within four categories:
 - » **Crossing management**, CBP staffing levels, hours of operation
 - » **Technology**, intelligent transportation system (ITS) applications
 - » **Pricing**, toll rates, demand management strategies
 - » **Traffic engineering/infrastructure**, changes to approach networks
- Used a suite of calibrated modeling tools to test potential solutions





El Paso POE Operations Plan

Test & Evaluate Potential Solutions





El Paso Regional POE Operations Plan

Test & Evaluate Potential Solutions- Key Findings

- Individual crossings and lane types are already approaching or at “operational capacity” (60-120 wait times)
- If nothing is done, the entire system will approach capacity within the next 25 years, with the busiest bridges (BOTA and Zaragoza) reaching capacity within the next 10 years
- Even with operational improvements, significant delays will remain for passenger and commercial movements





El Paso Regional POE Operations Plan

Recommendations to Regional Leadership

- **Extend commercial hours of operation at BOTA and Santa Teresa (5am to 1am)**
- **Work with Texas and New Mexico Congressional delegations, CBP leadership and staff, to add inspection staff at Zaragoza, Paso del Norte, Santa Teresa**
- **Work with Texas Congressional delegation, DPS, and other stakeholders to combine/co-locate FMCSA and Texas DPS inspection processes**

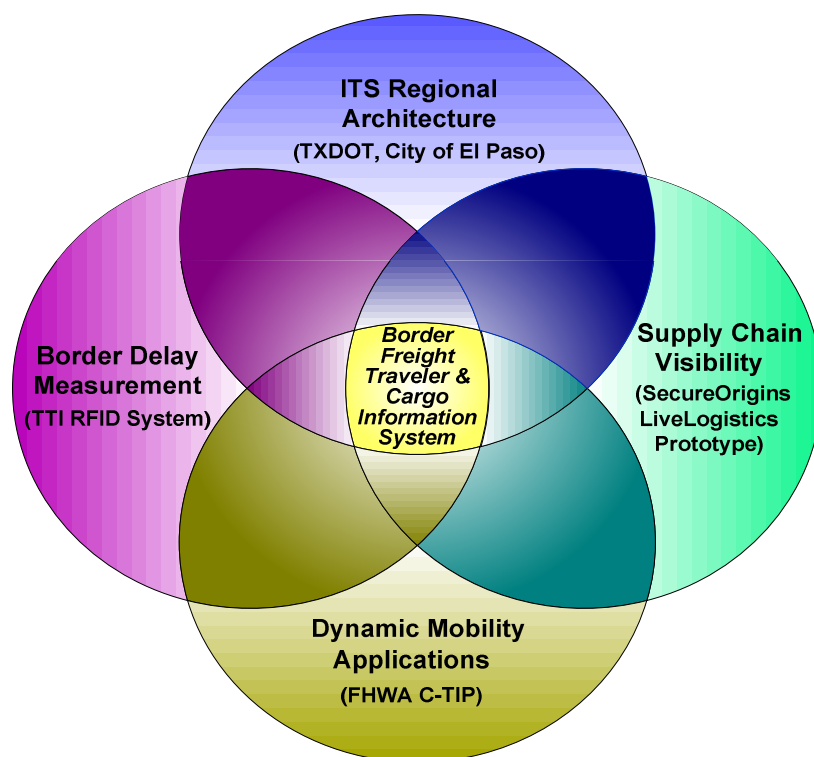




El Paso Regional POE Operations Plan

Recommendations to Regional Leadership

- Implement the ***Border Traveler & Cargo Information System***





El Paso Regional POE Operations Plan

Recommendations to Regional Leadership

- Reconfigure southbound lane assignments at BOTA approach (Paisano, US-54, IH-110) to separate cars and trucks
- Would mitigate merging & weaving activity





El Paso Regional POE Operations Plan

Recommendations to Regional Leadership

- **Implement system improvements to enhance commercial operations at Zaragoza**
 - » **Add left-turn lane on the LP 375 westbound frontage road**
 - » **Add inspection capacity (FAST lanes, booths)**
- **Would benefit commercial vehicles as well as passenger movements at this crossing**

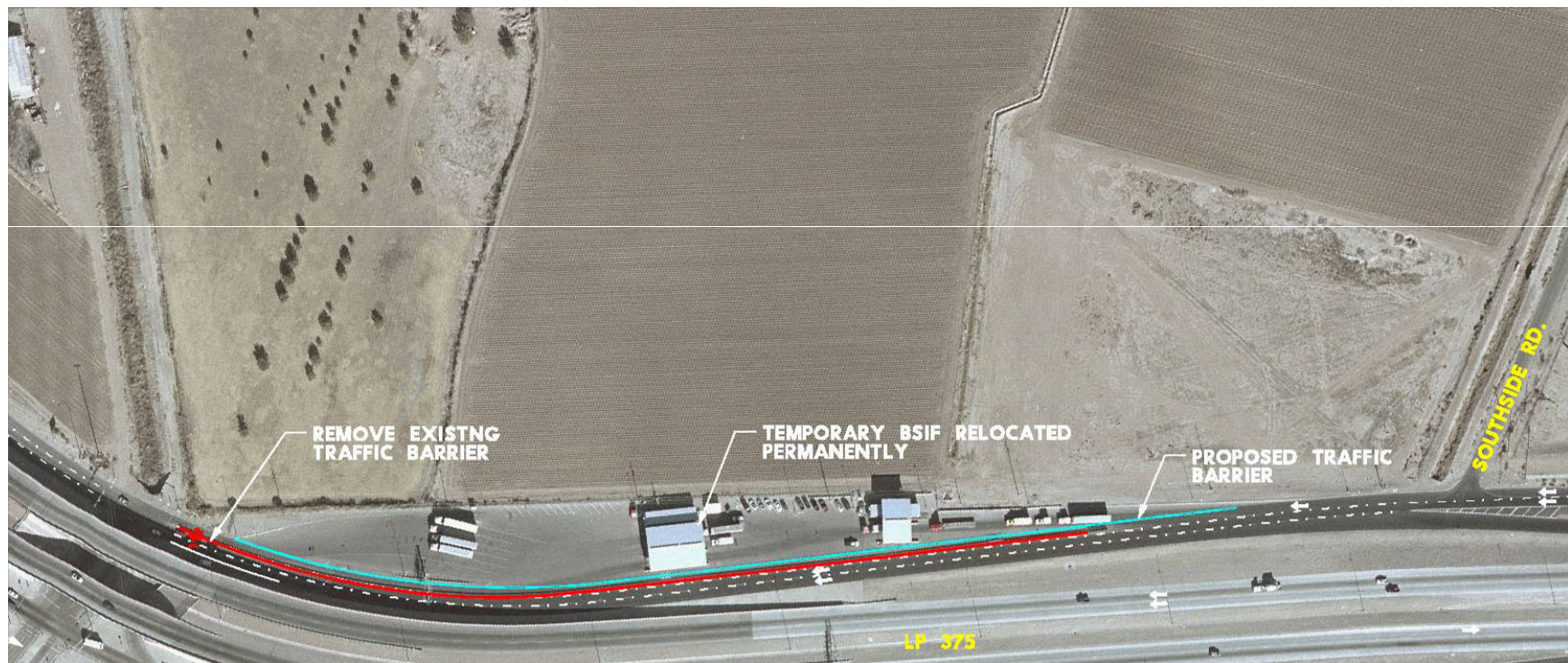




El Paso Regional POE Operations Plan

Recommendations to Regional Leadership

Left-turn lane on the LP 375 westbound frontage road





El Paso Regional POE Operations Plan

Recommendations to Regional Leadership

Additional inspection capacity (FAST lanes, booths)





El Paso Regional POE Operations Plan

Recommendations to Regional Leadership

- **Continue to investigate traditional and innovative funding mechanisms to implement recommendations**
 - » **Coordinated Border Infrastructure funds**
 - » **State, federal transportation funds**
 - » **Public-private partnership opportunities**
- **Create an Operations Plan Implementation Task Force**
 - » **Members would include public, private, security stakeholders**
 - » **Charge would be work with federal, state, local partners to ensure implementation of these recommendations, appropriate future planning activities**





El Paso Regional POE Operations Plan

Our Next Steps – Meetings and Briefings

- **Public Meetings**
 - » Continuing through May 19th
- **Final Report (with public and stakeholder comments) available on our website (www.elpasoborderplan.org)**
 - » Week of May 23rd
- **Adoption of recommendations by El Paso City Council**
 - » May 31st





El Paso Regional POE Operations Plan

Questions?

