

I T E M 8 . 1

South of Sean Haggerty Drive and East of McCombs Street

Detailed Site Development Plan

PZDS19-00037





Recommendation | Public Input

Planning Division and DCC recommendation:

Approval

CPC Vote:

Recommended Approval (5-0)

Public Input:

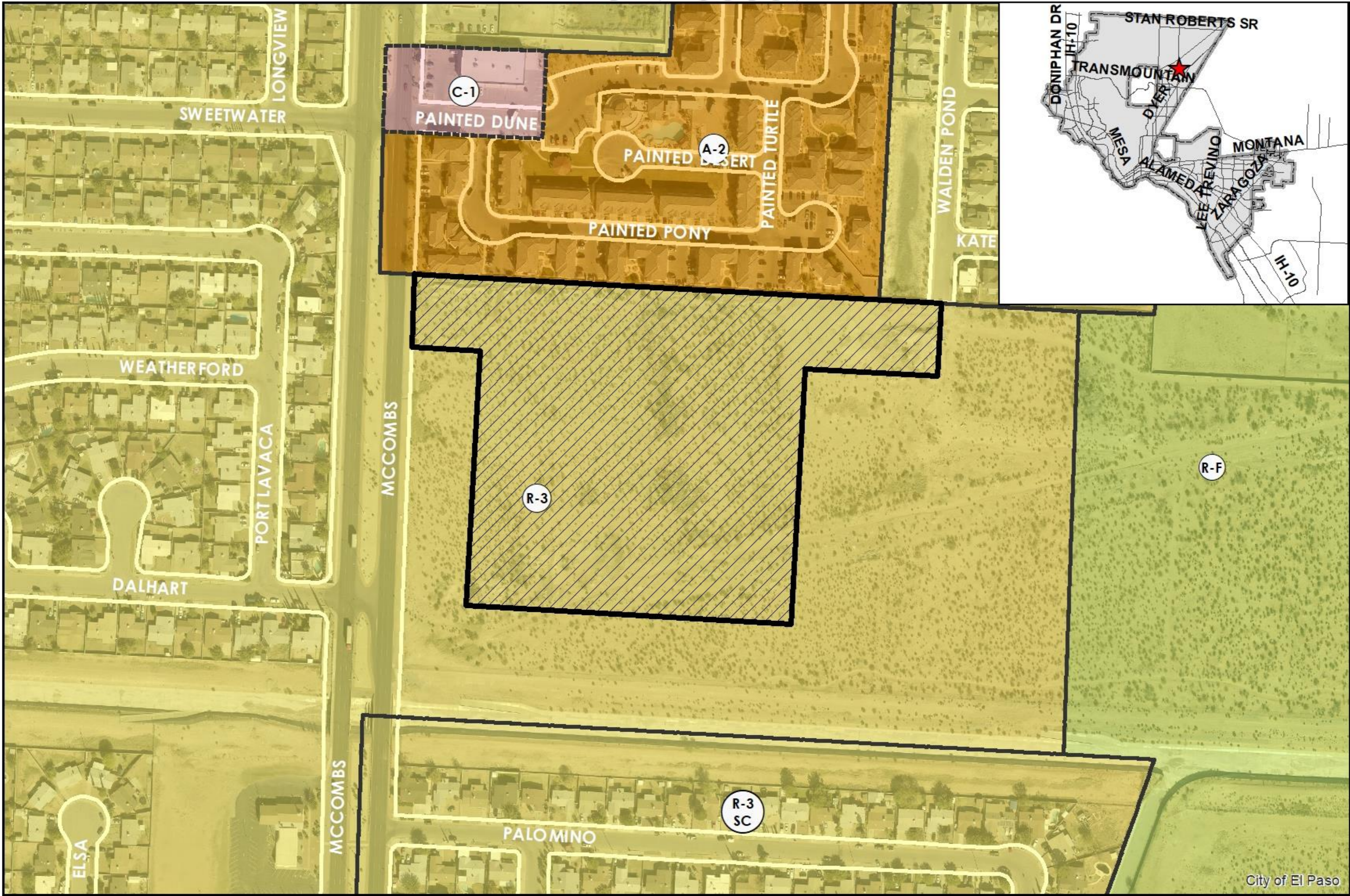
- The Planning Division has not received communication support or opposition to the detailed site development plan.

Strategic Goal #3 Promote the Visual Image of El Paso

3.1 Provide business friendly permitting and inspection processes

3.2 Improve the visual impression of the community

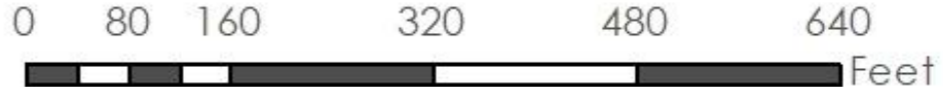
PZDS19-00037



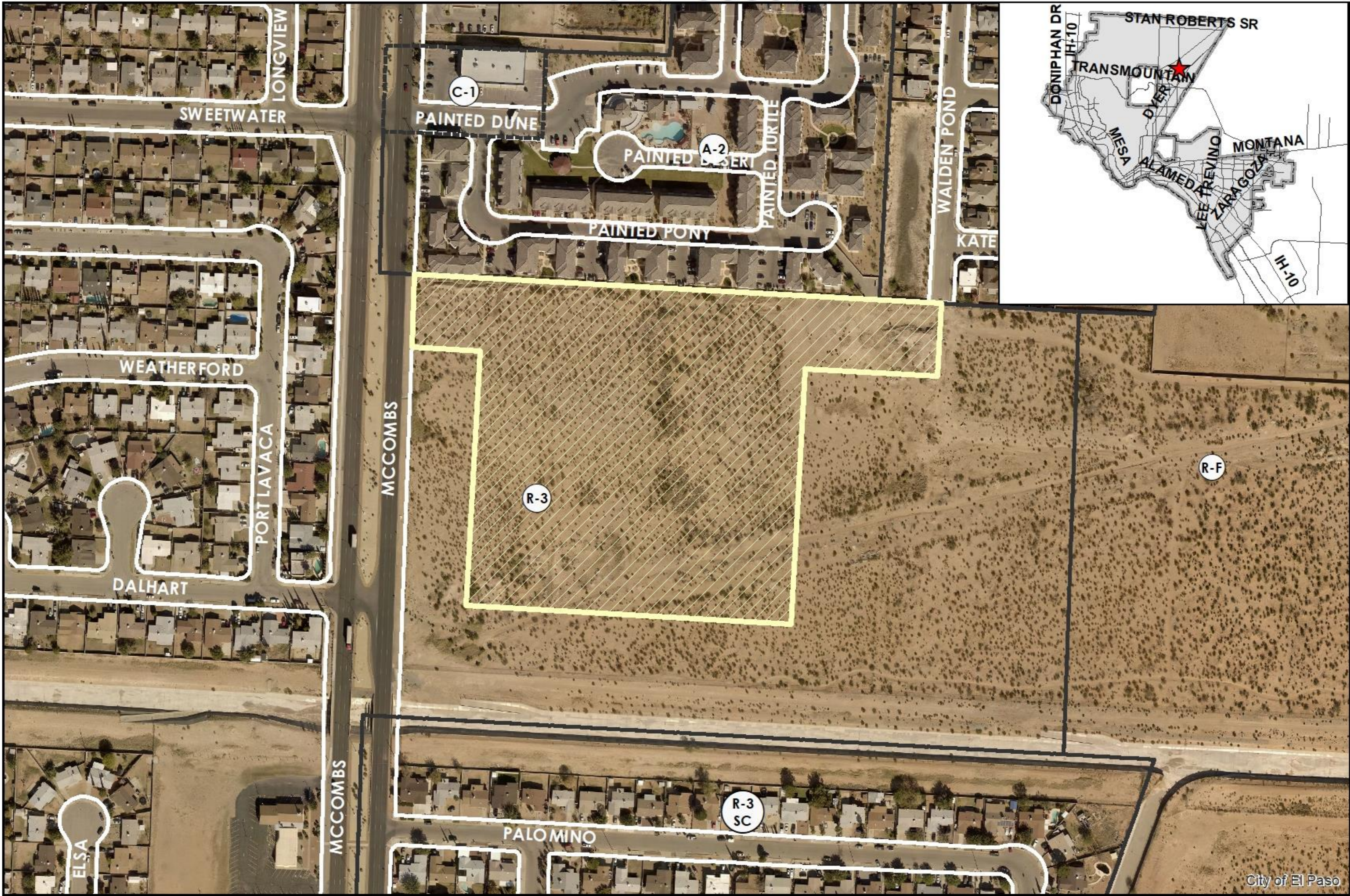
This map is designed for illustrative purposes only. The features depicted here are approximate and more site-specific studies may be required to draw accurate conclusions. Enlargements of this map to scales greater than its original can induce errors and may lead to misinterpretations of the data. The Planning & Inspections Department Planning Division makes no claim to its accuracy or completeness.



 Subject Property



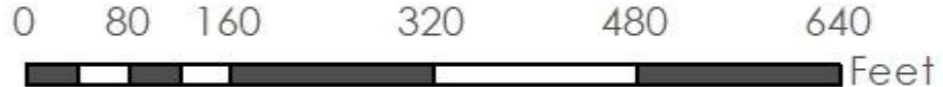
PZDS19-00037



This map is designed for illustrative purposes only. The features depicted here are approximate and more site-specific studies may be required to draw accurate conclusions. Enlargements of this map to scales greater than its original can induce errors and may lead to misinterpretations of the data. The Planning & Inspections Department Planning Division makes no claim to its accuracy or completeness.



 Subject Property





TYPICAL ARCHITECTURAL ELEVATIONS (BUNGALOW STYLE)
SCALE: N.T.S.



TYPICAL ARCHITECTURAL ELEVATIONS (BUNGALOW STYLE)
SCALE: N.T.S.

***NOTE:**
ARCHITECTURAL FEATURES MAY VARY
FROM THOSE SHOWN ABOVE. THESE
ARCHITECTURAL ELEVATIONS ARE FOR
MAXIMUM HEIGHT DEMONSTRATION ONLY.

PZDS19-00037



This map is designed for illustrative purposes only. The features depicted here are approximate and more site-specific studies may be required to draw accurate conclusions. Enlargements of this map to scales greater than its original can induce errors and may lead to misinterpretations of the data. The Planning & Inspections Department Planning Division makes no claim to its accuracy or completeness.



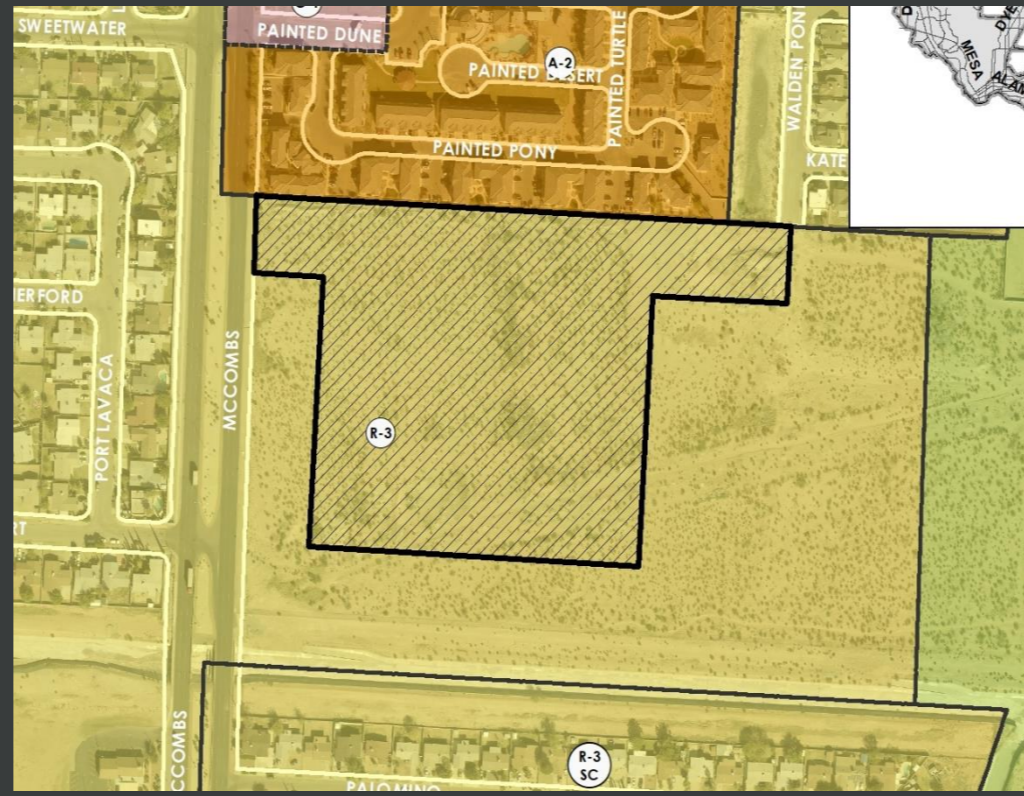




N



W



E



S



THANK YOU

