



Park Maintenance Update: Spring Green-up to Present

SBR – May 20, 2020



Strategic Goal Alignment

- Goal 4 – Enhance El Paso’s Quality of Life Through Recreational, Cultural and Educational Environments
- Goal 3 – Promote the Visual Image of El Paso
- Goal 6 – Set the Standard for Sound Governance and Fiscal Management

We will Cover:

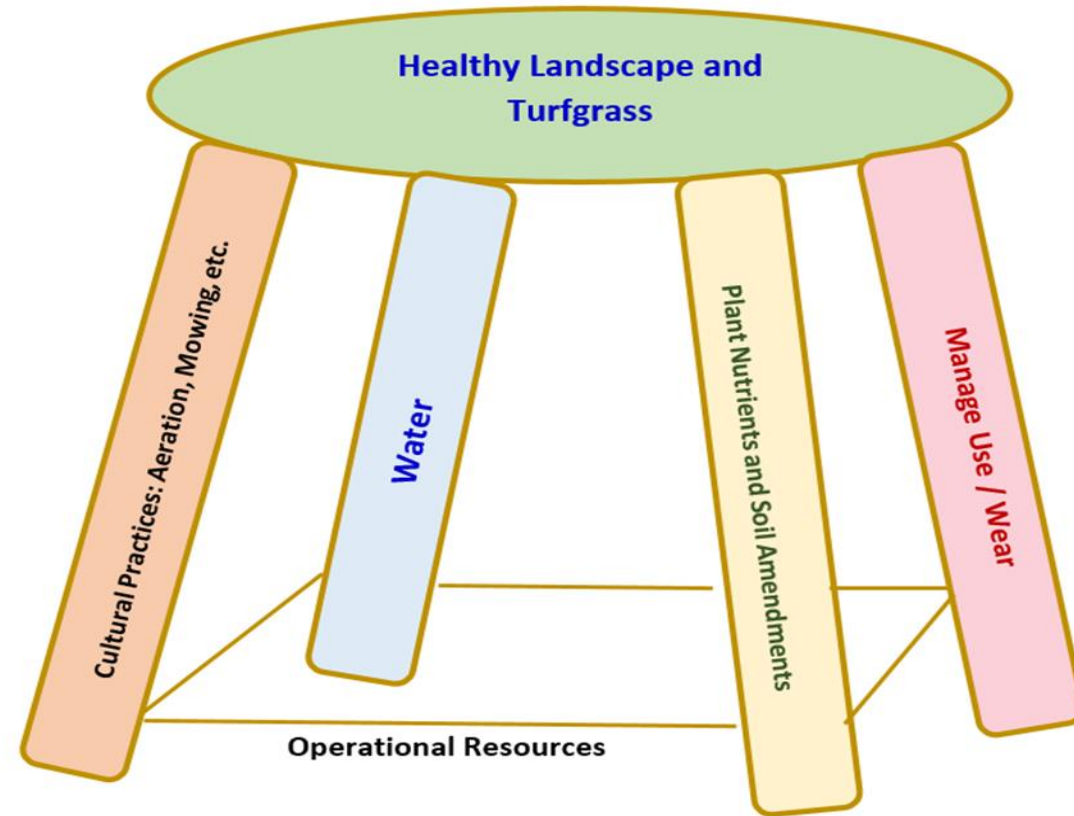
- Parks Maintenance Plan
- Previous Activities
- Current Activities





Park Maintenance Plan

Balancing Park Maintenance



Park Maintenance Plan

- A Maintenance Management Plan (MMP) is a quantitative system designed to help plan, budget, schedule and adjust park maintenance activities as necessary
- The usage of a MMP is a best practice that is endorsed by the NRPA, and taught at several training schools in the industry
- It groups parks into Categories/Levels so that resources can be allocated properly





Park Maintenance Plan

- The plan (presented to City Council May 14, 2019) has 5 Categories of descending maintenance intensities which allow for resourcing to be allocated objectively across the entire system and throughout each Tier
- It takes into consideration:
 - the assets on the site
 - work and time required to achieve the desired level
 - And sets frequencies/standards for maintenance activities





MMP Categories

- Category 1
 - Parks in this category have a high daily usage, have historic significance, and include Designated Games Fields. These parks are also key assets of the community, City, and or region
- Category 2
 - Parks in this category have a high daily usage, and are key assets of the community and City
- Category 3
 - Parks in this category have lower daily usage and serve as a gathering place for their neighborhoods
- Category 4
 - Parks in this category represent a significant investment of the City, and do not demand the same attention as other categories
- Category 5
 - Parks in this category are typically open space and trails



Levels of Service - Details

Category	Frequency of Visits	Irrigation: Drought Response	Litter	Permanent Restroom Janitorial	Clean Hardscape	Mowing	Granular Fertilizer	Foliar Nutrients
1	5 to 10 per week	Last to go into restrictions	Daily	Daily	Daily at SJP. Once per month at Designated Game Fields (DGF)	2-3 per week on DGF, other turf weekly	Once every 4-6 weeks	Bi-weekly
2	2 to 3 per week	Third to go into restrictions	4-7 times per week	Daily	As needed	Weekly	Once every 6 weeks	As needed, if at all
3	1 per week	Second to go into restrictions	3-5 times per week	Daily	As needed	Weekly	Once every 6-8 weeks	n/a
4	Biweekly	First to go into restrictions	2-4 times per week	Daily	As needed	Weekly	Once every 8 weeks	n/a
5	Bi-weekly	First to go into restrictions	1-3 times per week	Daily	As needed	2 times per summer, if needed at all	Two times per year, if needed at all	n/a

Example Parks in MMP Categories

Category	PARKS
1	San Jacinto Plaza & Cleveland Square; Designated Game Fields at: Westside Sports Complex, Eastside Sports Complex, Joey Barraza and Vino Complex; Blackie Chesher
2	Westside Community, Memorial, Eastwood, Chuck Heinrich, Dick Shinaut, Pavo Real, JP Shawver, Crestmont
3	Mission Hills, Newman, Pico Norte, Skyline Youth, Frank Castillo, Pueblo Viejo, Argal, Mundy
4	Cimarron Cove, Mesa Terrace, Cork, Student Memorial, Hueco Mountain, Pecan Grove 1, Mesa Drain, Palo Verde
5	Bear Ridge; McKelligan Canyon, North Open Reserve





Previous Activities

Previous Activities

- From Last Fall to the present our Team has continued to perform normal/planned maintenance activities like:
 - ✓ Aerate to relieve compaction and increase water infiltration
 - ✓ Irrigate based on climate and turf needs
 - ✓ Apply plant nutrients and soil amendments
 - ✓ No extended play on DGFs during winter months.
 - ✓ Weekly tracking of Soil Temperatures at a 6 inch depth.



2020 Soil Temperature Log

Week of	Ave Temp at 6 inches
March 9-13	61°F
March 16-20	64°F
March 23-27	64°F
March 30-Apr 3	61°F
Apr 6-10	64°F
Apr 13-17	65°F



Process Improvement: Increase Green Appearance Early Spring

**Overseeding
At
Westside Sports Complex**

Process Improvement:

Pilot Project for Overseeding Sports Turf

- Voice of the Customer, “Desire to see Green Turf earlier in the Spring”
- Possible solution is to overseed in the fall

The Goal

Green Turf coverage for the early part of the spring sports season.

Possible Solution

Overseeding can provide green turf during the dormant season.

Pilot Project

Overseeded some fields at Westside Sports Complex programmed for public use with Ryegrass.

Process Improvement



In September of 2019, Fields 3,4,5,8,12 and 13 at Westside Sports Complex were overseeded with Ryegrass.



10-14-19

One month after
overseeding



12-23-19

Three months after
overseeding



03-09-2020

Current Conditions





Outcome

- Results are positive, and we will continue to overseed
 - ✓ The limiting factor is not financial resources, but the number of fields that would be available for organized sports use while the overseeding process takes place
- For best results:
 - ✓ The overseeding process takes a field out of play for four weeks
 - ✓ The optimum time to overseed in El Paso is on average Labor Day thru the first week of October







Current Activities

We began this growing season following the plan – Aerification, IPM, Mowing, etc



2020 Turf Renovation Projects

at key sites like Lionel Forti, Memorial and E.L. Williams were being planned for the summer but...



2019 Turf Renovations

Covid-19 and ElPaso

- The COVID-19 Pandemic is affecting communities worldwide and El Paso is no exception
- As a community, COVID-19 is affecting physical and mental health, as well as our local economy



COVID-19 in El Paso

- The COVID-19 Pandemic is affecting communities worldwide and El Paso is no exception
- As a community, COVID-19 is affecting physical and mental health, as well as our local economy
- Fiscal Responsibility requires we make hard adjustments to the current MPP, including staffing



Adjusting the MPP

- Some maintenance practices have been adjusted to help in cost avoidance
 - Litter contractor service parks once per week
 - Irrigating parks at a reduced rate
 - Mowing parks every two weeks, rather than weekly

Litter Control

May notice more build up while parks are closed, **and will save \$\$ 60,000 per month**

Irrigation

Landscapes and turf will not be as green and succulent, but will be at a healthy state, **and will save \$\$ 200,000 Per Month**

Mowing

May notice slightly taller turf in between mowing cycles, **and will save \$\$ 55,000 per month**





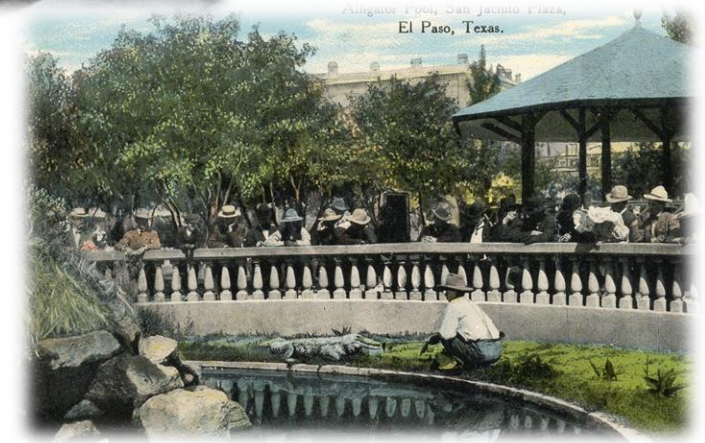


Looking Forward



Looking Forward while Honoring the Past

- Intelligent Risk
 - Forward Looking Investment
 - Creative Master Plans
 - Integrated **P**lant **M**anagement
- Effective Innovation
 - Green Infrastructure
 - Irrigation Renovation
- Case Study: Central Park
(can be applied to Memorial Park)





Thank You