

Item 5: Mountain to River Trail Update

May 26, 2020



Project Details

- **Goal:** Enhance non-motorized trail access and improve trail connections among diverse land uses including existing paved trails / systems.
- **Guiding principles:** user experience, constructability, safety, economic benefits, connectivity, wayfinding, cost effectiveness, and maintainability.
- **Overall Project Budget:** \$736,777 funded by 2012 Quality of Life Bonds and stakeholder contributions
- **Construction Budget:** \$540,000



Existing paved trail along Transmountain Road

Project Schedule

- Trail route alternatives have been identified and evaluated.
- Preliminary design has been completed.
- Design in progress; to be completed December 2020.
- Construction schedule to be determined.



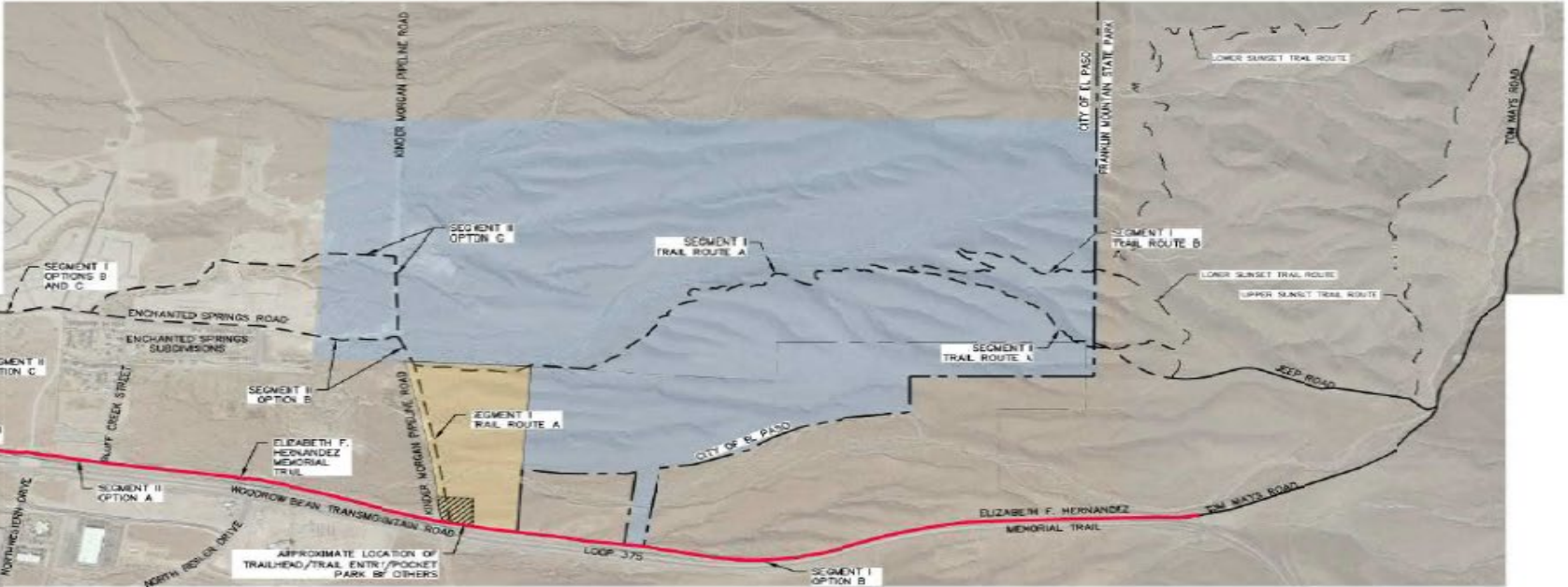
Scope of Work

The Mountain to River Trail System will provide trail connectivity from Tom Mays Park to the Rio Grande Trail principally along the existing street and trail infrastructure.

The scope of work will consist of the following:

- Install sidewalk, ramps, and bike lanes through Borderland Corridor and where necessary.
- Design Trailhead parking area.
- **Wayfinding** - Identify locations and install signage unique to the Mountain to River Trail System in conjunction with the other trail improvements.
- **Get across I-10** - Design a trail with the intent to provide connectivity under I-10 overpass at Transmountain Road.
 - Secure Property Use Agreements with TXDOT.
- **Permitting for BNSF and IBWC** – feasibility of getting across.
- **MOU** – permitting for the upper mountain (dirt trail).

Mountain to River Trail Route



RECOMMENDED MOUNTAIN TO RIVER TRAIL ALIGNMENT

- East-west multi-use trail linking Franklin Mountain State Park in NW El Paso to the Rio Grande River in the Upper Valley

Mountain to River Trail- Wayfinding Signs



LOGO



Full color logo.



One color versions when used on light background.



One color versions when used on dark background.

COLORS



**PMS
2945U**



**PMS
129U**



**PMS
7499U**



**PMS
1795U**

FONTS

TITLING GOTHIC FB NORMAL (BLACK)

TITLING GOTHIC NORMAL (BOLD)

Mountain to River Trail- Wayfinding Signs



Next Steps

- Improvements will be performed using existing paths and providing connections, filling gaps, and wayfinding to provide a safer route through the Mountain to River Trail.
- Community Open House for preliminary design meeting to be tentatively scheduled summer 2020
- Consultant to coordinate development of land use agreement and complete design for review and approval of project stakeholders including TX DOT, EP Water, FMSP, and BNSF Railway .





Thank You

