

**CITY OF EL PASO**  
**AGENDA ITEM DEPARTMENT HEAD'S SUMMARY FORM**

**DEPARTMENT:** Planning & Inspections Department, Planning Division

**AGENDA DATE:** Introduction: May 31, 2016  
Public Hearing: June 14, 2016

**CONTACT PERSON/PHONE:** Larry Nichols, 915-212-1550, [nicholslf@elpasotexas.gov](mailto:nicholslf@elpasotexas.gov)  
Ted Marquez, 915-212-7015, [marqueztx@elpasotexas.gov](mailto:marqueztx@elpasotexas.gov)

**DISTRICT(S) AFFECTED:** District 8

**SUBJECT:**

An ordinance amending Title 12 (Vehicles and Traffic), Chapter 12.56 (Parking Meters), Section 12.56.020 (Installation), Subsection F, to add an exception to the regular hours of operation of parking meters fees on a portion of North Coldwell St.; the penalty being as provided in Chapters 12.84 (Violation – Penalty) and 12.85 (Parking Violations) of the El Paso City Code.

**BACKGROUND / DISCUSSION:**

The ordinance proposes to modify the hours of enforcement of parking meters for the portion of North Coldwell Street north of Franklin Avenue and South of Missouri Avenue. The parking spaces included within this area are within Zone A the Downtown Parking District.

The Downtown Parking District was created on February 5, 2013. It allows residents within six (6) zones encompassing downtown El Paso to purchase permits granting free parking in on-street spaces within their zone of residence. While the vast majority of parking spaces included in the program are metered, most spaces in the area west of Southwest University Park are not. As currently regulated, these unmetered spaces cannot legally be occupied by non-permit holders. Considering the increasingly mixed-use nature of this district, Planning & Inspections Department staff was directed to recommend changes that would result in the optimal utilization of existing on-street parking resources.

In a parking study conducted in February and May 2016 by City staff, it was found that the permitted parking spaces in this area are underutilized, except during events at Southwest University Park, and during the peak operating hours of businesses in the area. In order to promote better utilization of on-street parking spaces proximate to existing businesses, staff recommended that parking meters be installed along the aforementioned portion of North Coldwell Street, and that these meters be subject to 24-hour enforcement, seven days a week.

**PRIOR COUNCIL ACTION:**

Creation of Downtown Parking Districts on February 5, 2013 through Ordinance 17942

Modified to change the boundary of Parking Zone A on April 1, 2014 through Ordinance 18154

Council directed staff to draft the attached ordinance to match staff recommendations on May 17, 2016.

**AMOUNT AND SOURCE OF FUNDING:**

N/A

**BOARD / COMMISSION ACTION:**

N/A

\*\*\*\*\*REQUIRED AUTHORIZATION\*\*\*\*\*

**LEGAL:** (if required) N/A

**FINANCE:** (if required) N/A

**DEPARTMENT HEAD:**

Larry F. Nichols  
Director, Planning & Inspection Department

---

**APPROVED FOR AGENDA:**

**CITY MANAGER:** \_\_\_\_\_

**DATE:** \_\_\_\_\_

**ORDINANCE NO. \_\_\_\_\_**

**AN ORDINANCE AMENDING TITLE 12 (VEHICLES AND TRAFFIC), CHAPTER 12.56 (PARKING METERS), SECTION 12.56.020 (INSTALLATION), SUBSECTION F, TO ADD AN EXCEPTION TO THE REGULAR HOURS OF OPERATION OF PARKING METERS FEES ON A PORTION OF NORTH COLDWELL ST.; THE PENALTY BEING AS PROVIDED IN CHAPTERS 12.84 (VIOLATION – PENALTY) AND 12.85 (PARKING VIOLATIONS) OF THE EL PASO CITY CODE.**

**WHEREAS**, on February 5, 2013, City Council approved the creation of downtown parking districts; and

**WHEREAS**, the purpose of the downtown parking districts is to encourage the revitalization of downtown El Paso by offering a new parking alternative for residential tenants in the downtown area; and

**WHEREAS**, the City desires to install parking meters and remove signage along a portion of North Coldwell St. within “Zone A” of the Downtown Parking District to support revitalization efforts; and

**WHEREAS**, the City desires to alter the hours of operation of the parking meters along a portion of North Coldwell St. within “Zone A” of the Downtown Parking District to support a mix of uses in the area.

**NOW, THEREFORE, BE IT ORDAINED BY THE CITY COUNCIL OF THE CITY OF EL PASO:**

**Section 1.** That Title 12 (Vehicles and Traffic), Chapter 12.56 (Parking Meters), Section 12.56.020 (Installation), Subsection F of the El Paso City Code is hereby amended to add the following:

8. Parking meter fees shall apply on the portion of N. Coldwell St. within “Zone A” of the Downtown Parking District for a 24-hour period of every day except on officially designated holidays.

**Section 2.** Except as expressly herein amended, that Title 12 (Vehicles and Traffic) of the El Paso City Code shall remain in full force and effect.

**ADOPTED** this \_\_\_\_\_ day of \_\_\_\_\_, 2016.

**ORDINANCE NO. \_\_\_\_\_**

16-1007-1654/ 539708

Title 12 Downtown Parking Amendment

OAR


**THE CITY OF EL PASO**

\_\_\_\_\_  
Oscar Leeser,  
Mayor

**ATTEST:**

\_\_\_\_\_  
Richarda Duffy Momsen  
City Clerk

**APPROVED AS TO FORM:**

  
\_\_\_\_\_  
Omar A. De La Rosa  
Assistant City Attorney

**APPROVED AS TO CONTENT:**

\_\_\_\_\_  
Ted Marquez, Director  
Department of Transportation

  
\_\_\_\_\_  
Larry F. Nichols, Director  
Planning and Inspections Department

**ORDINANCE NO.** \_\_\_\_\_

16-1007-1654/ 539708  
Title 12 Downtown Parking Amendment  
OAR



## MEMORANDUM

**DATE:** May 24, 2016  
**TO:** The Honorable Mayor and City Council  
Tommy Gonzalez, City Manager  
**FROM:** Larry F. Nichols, Director, Planning & Inspections Department  
**SUBJECT:** An Ordinance Amending Title 12 to Add an Exception to the Regular Hours of Parking Meters Fees On a Portion of North Coldwell Street

---

The proposed ordinance is an amendment to permit 24-hour enforcement of parking meter fees on a portion of North Coldwell Street, to be effective seven days a week.

Considering the increasingly mixed-use nature of this district, Planning & Inspections Department staff was directed to recommend changes that would result in the optimal utilization of existing on-street parking resources.

In a parking study conducted in February and May 2016 by planning staff, it was found that the permitted parking spaces in this area are underutilized, except during events at Southwest University Park, and during the peak operating hours of businesses in the area. In order to promote better utilization of on-street parking spaces proximate to existing businesses, staff recommended that parking meters be installed along the aforementioned portion of North Coldwell Street, and that these meters be subject to 24-hour enforcement, seven days a week.

These spaces are currently included in Zone A of the Downtown Parking District, which allows residents within six (6) zones encompassing downtown El Paso to purchase permits granting free parking in on-street spaces within their zone of residence. Based on the results of the parking study, staff concluded that making more parking spaces available to varied users would result in greater utilization of the existing on-street parking supply, and alleviate enforcement issues relating to business patrons in the area.

**Attachments:**

Parking Study

Map of subject portion of North Coldwell Street



# **Downtown Parking District Zone A Parking Study & Recommendations**

Planning & Inspections Department

June 14, 2016

Strategic Goal 3.1: Provide business-friendly permitting and inspection processes

Strategic Goal 3.2: Improve the visual impression of the community



# Parking District A

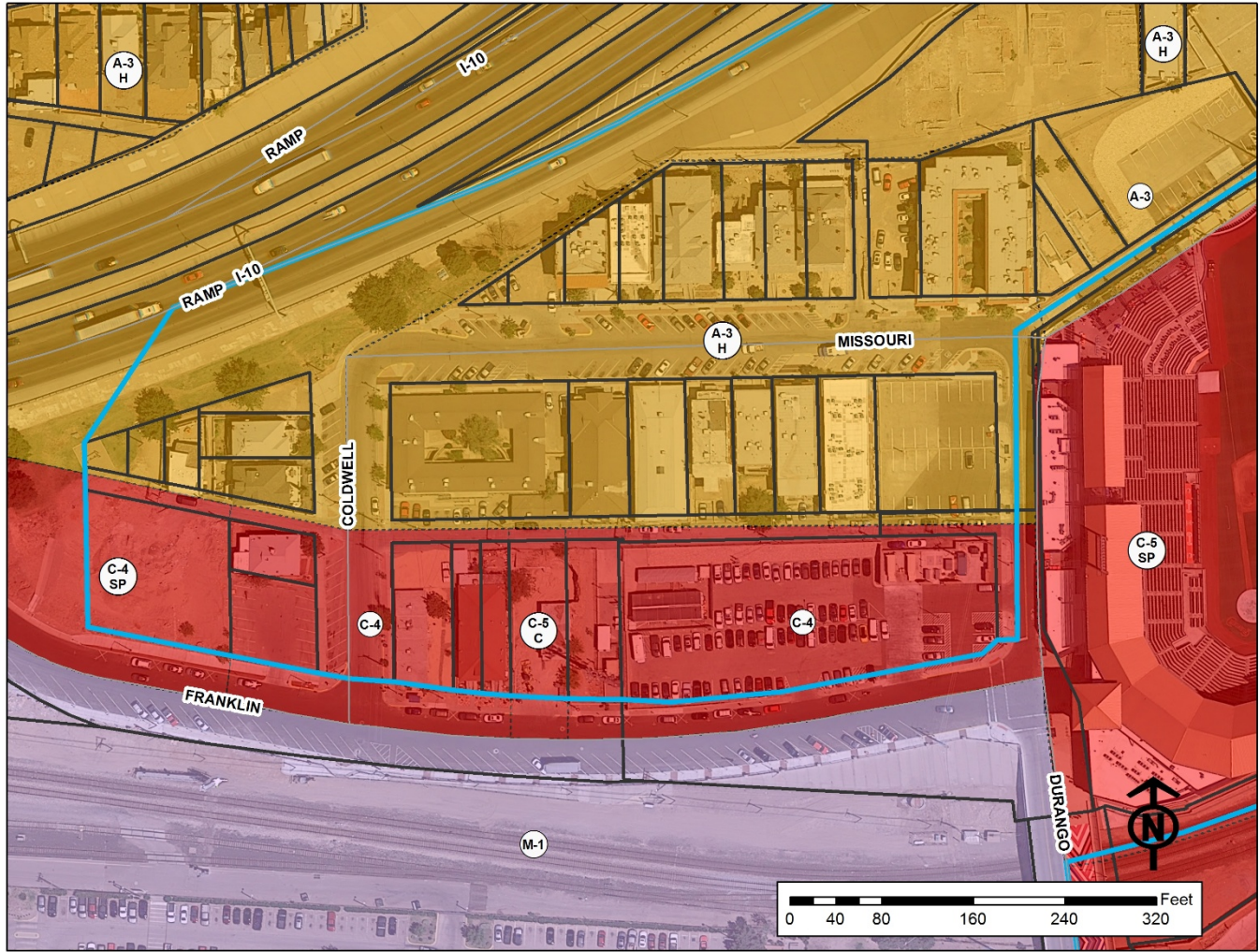


*"Delivering Outstanding Services"*





# Parking District A

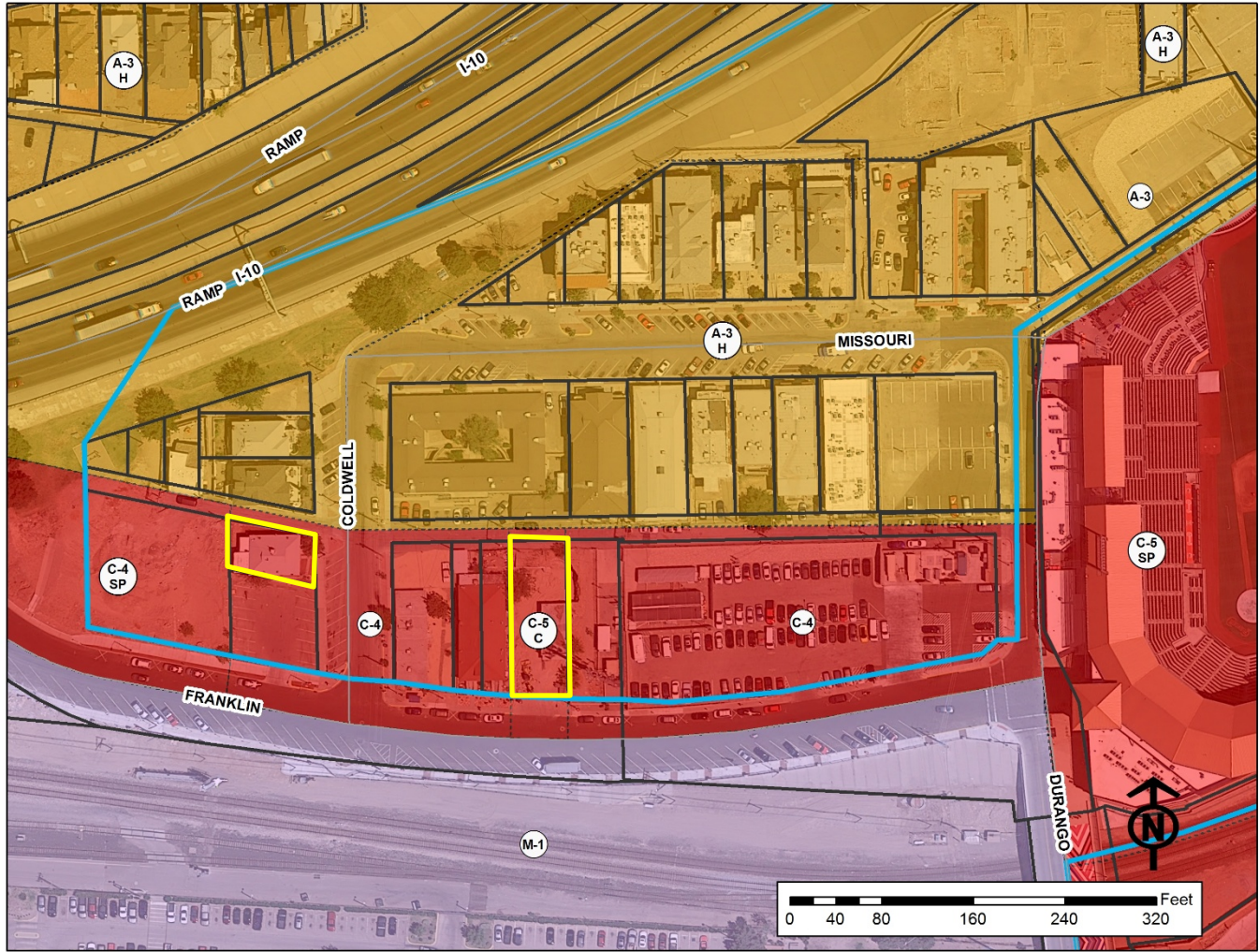


*"Delivering Outstanding Services"*





# Parking District A



*"Delivering Outstanding Services"*



# Parking District A





# Proposed Title 12 Amendment

- Leave parking district boundary intact, but remove signage and install meters on 10 spaces on Coldwell. Metered parking would be open to the public, but residents with parking permits could park free of charge.
- Stripe parallel parking spaces on east side of Coldwell (approx. 8 spaces) and add meters. Parking would be open to the public, but residents with parking permits could park free of charge.
- Parking meters enforced 24 hours instead of free after 6 pm





# Proposed Title 12 Amendment

**Three:** Stripe parallel parking spaces on east side of Coldwell (approx. 8 spaces) and add meters. Parking would be open to the public, but residents with parking permits could park free of charge.





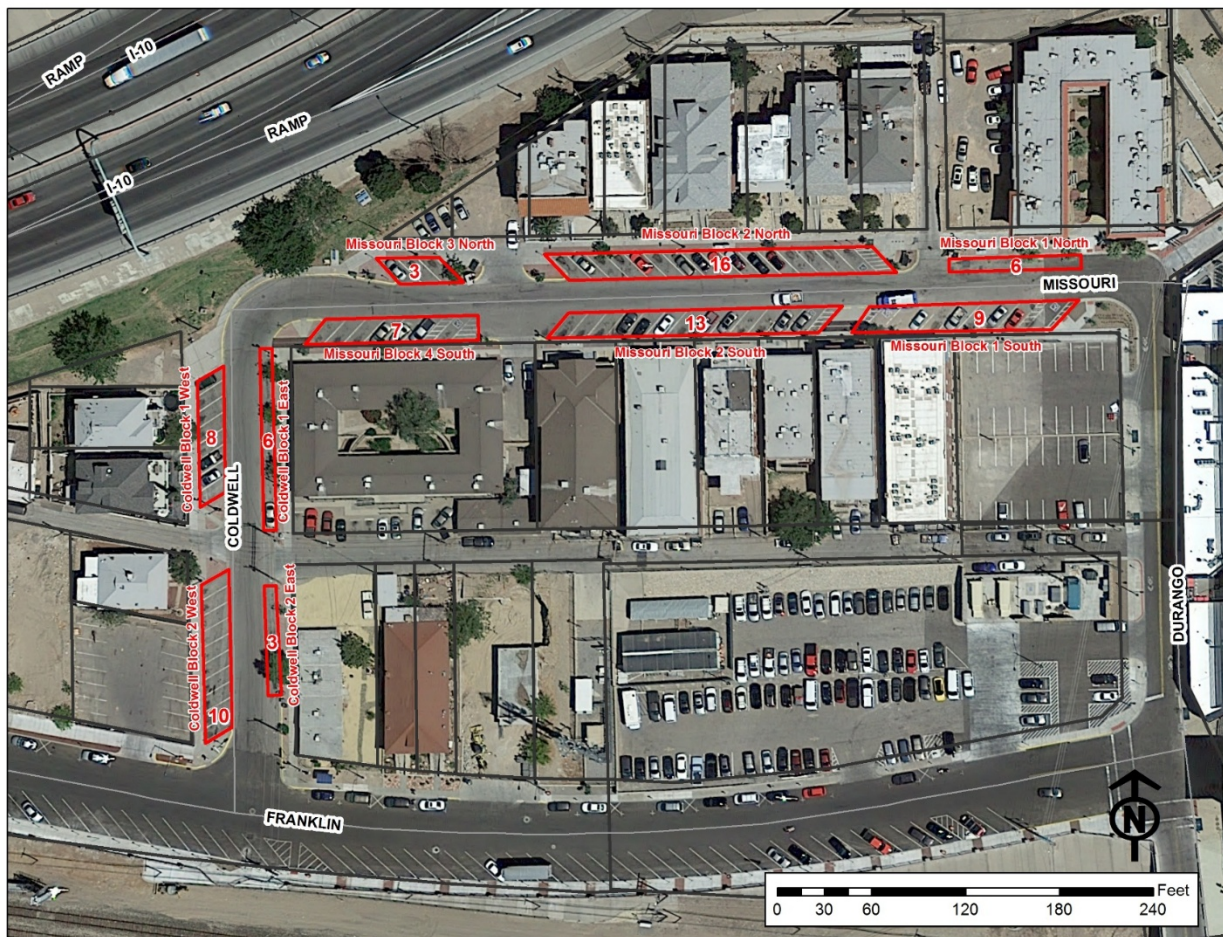


# Purpose of Study

- To assess whether the parking district boundaries or implementation should be modified based on recent and anticipated future development



# Parking Study Area



81 on-street parking spaces (all non-metered, 6 ADA accessible)

Parking counts taken from February 22 – 26 and May 3-13

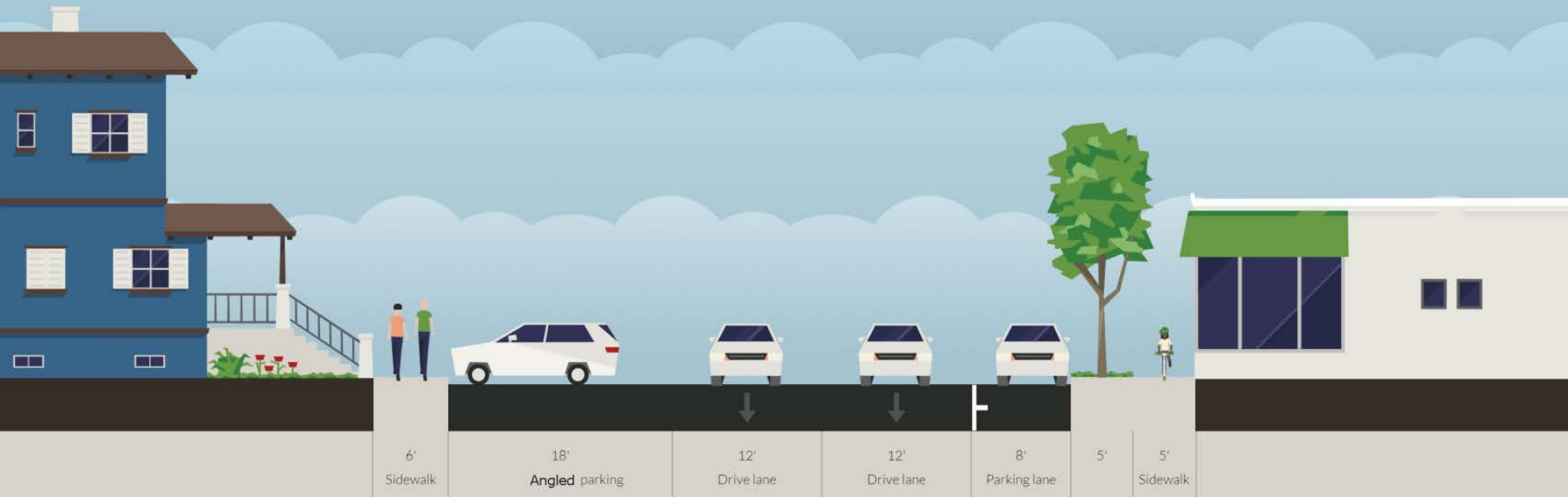
February daily counts: 8 A.M., 12 A.M., 4 P.M., 7 P.M.

May counts on specific days: 8 A.M., 12 A.M., 3 P.M., 4 P.M., 7 P.M., 9 P.M., 11 P.M.



# Cross Section of Coldwell Avenue

## Coldwell Avenue



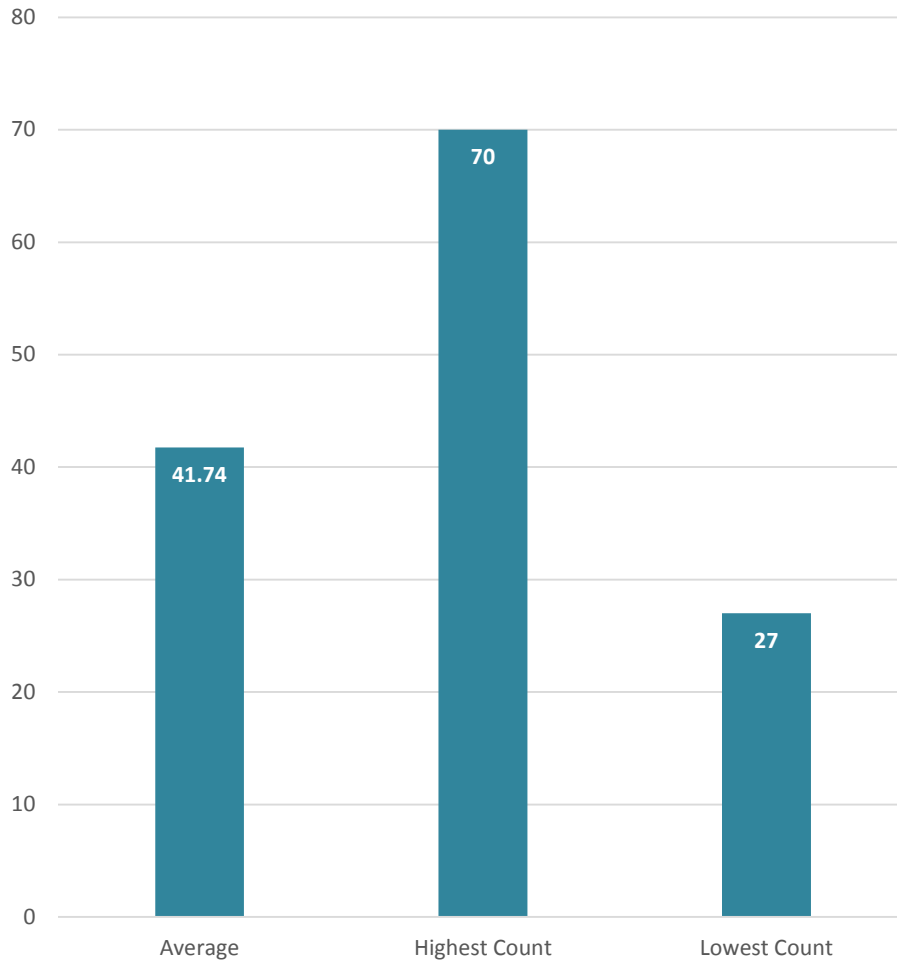
# Highlights

	Date	Day	Time	TOTAL (n/81)	% Utilization
<b>Average</b>				41.74	52%
<b>Highest Count</b>	5/7/2016	Sat.	11:00 PM	70	86%
<b>Lowest Count (Tie)</b>	2/23/2016	Tue.	12:00 PM	27	33%
<b>Lowest Count (Tie)</b>	2/24/2016	Wed.	12:00 PM	27	33%
<b>Lowest Count (Tie)</b>	5/13/2016	Fri.	3:00 PM	27	33%
<b>Highest Day</b>					
<b>Game Day</b>	5/7/2016	Sat.		228*	70%
<b>Lowest Day</b>	2/22/2016	Mon.		139*	43%

\* This number is a cumulative total of all the counts that day. It would be n/324 instead of n/81

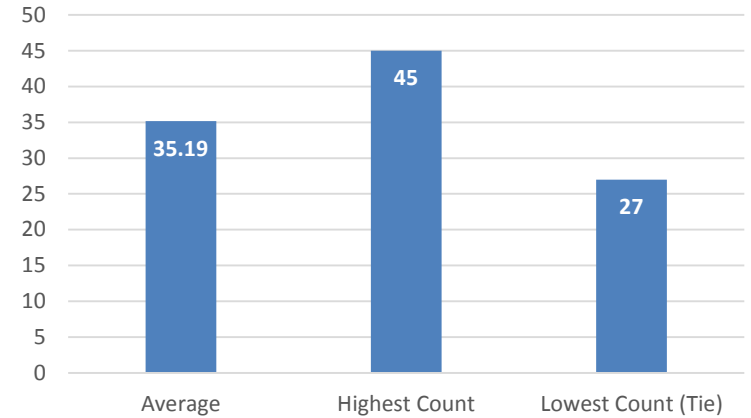
# Highlights

## Overall Traffic Count Highlights



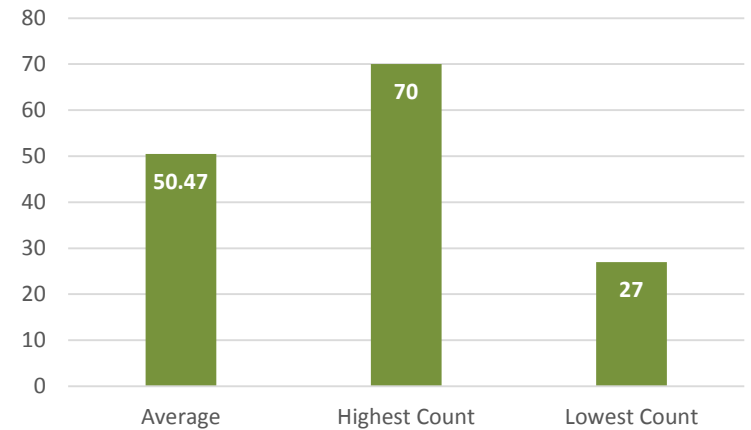
## Weekday Traffic Count Highlights

*February 22 - 25, 2016*



## Baseball Season, Evening, and Weekend Traffic Count Highlights

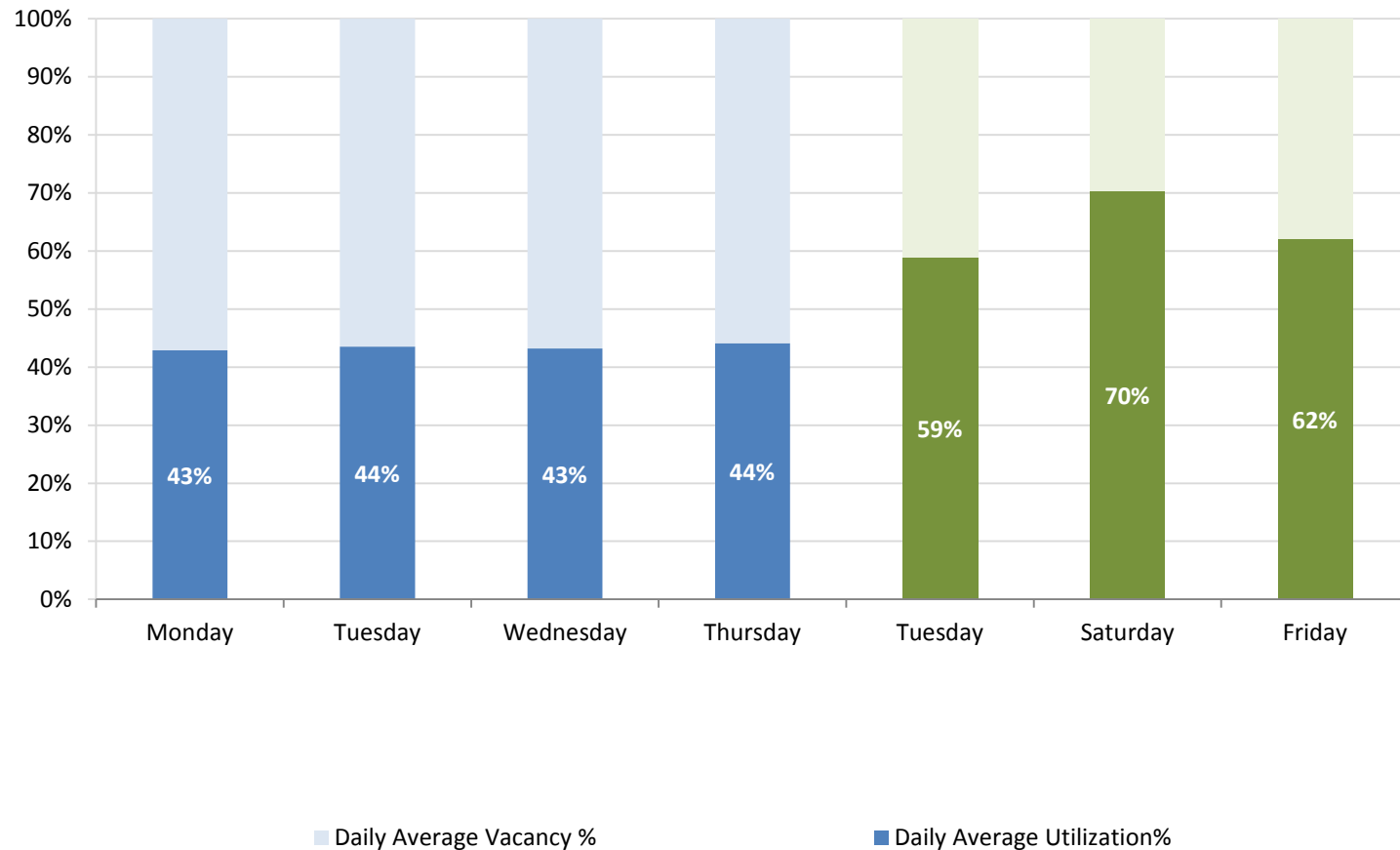
*May 3 - 13, 2016*



# Highlights

## Overall Average Daily Utilization Rate

February 22 - May 13, 2016





# Average Utilization

Missouri 1, North



**34%**

2.1 vehicle / 6 spaces

Missouri 1, South



**71%**

6.4 vehicles / 9 spaces

Missouri 2, North



**61%**

9.8 vehicles / 16 spaces

Missouri 2, South



**37%**

4.8 vehicles / 13 spaces

Missouri 3, North



**27%**

0.8 vehicles / 3 spaces

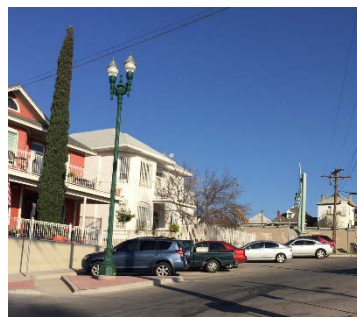
Missouri 3, South



**63%**

4.4 vehicles / 7 spaces

Coldwell 1, West



**57%**

4.6 vehicles / 8 spaces

Coldwell 1, East



**2%**

0.1 vehicles / 6 spaces

Coldwell 2, West



**23%**

4.6 vehicles / 10 spaces

Coldwell 2, East



**0%**

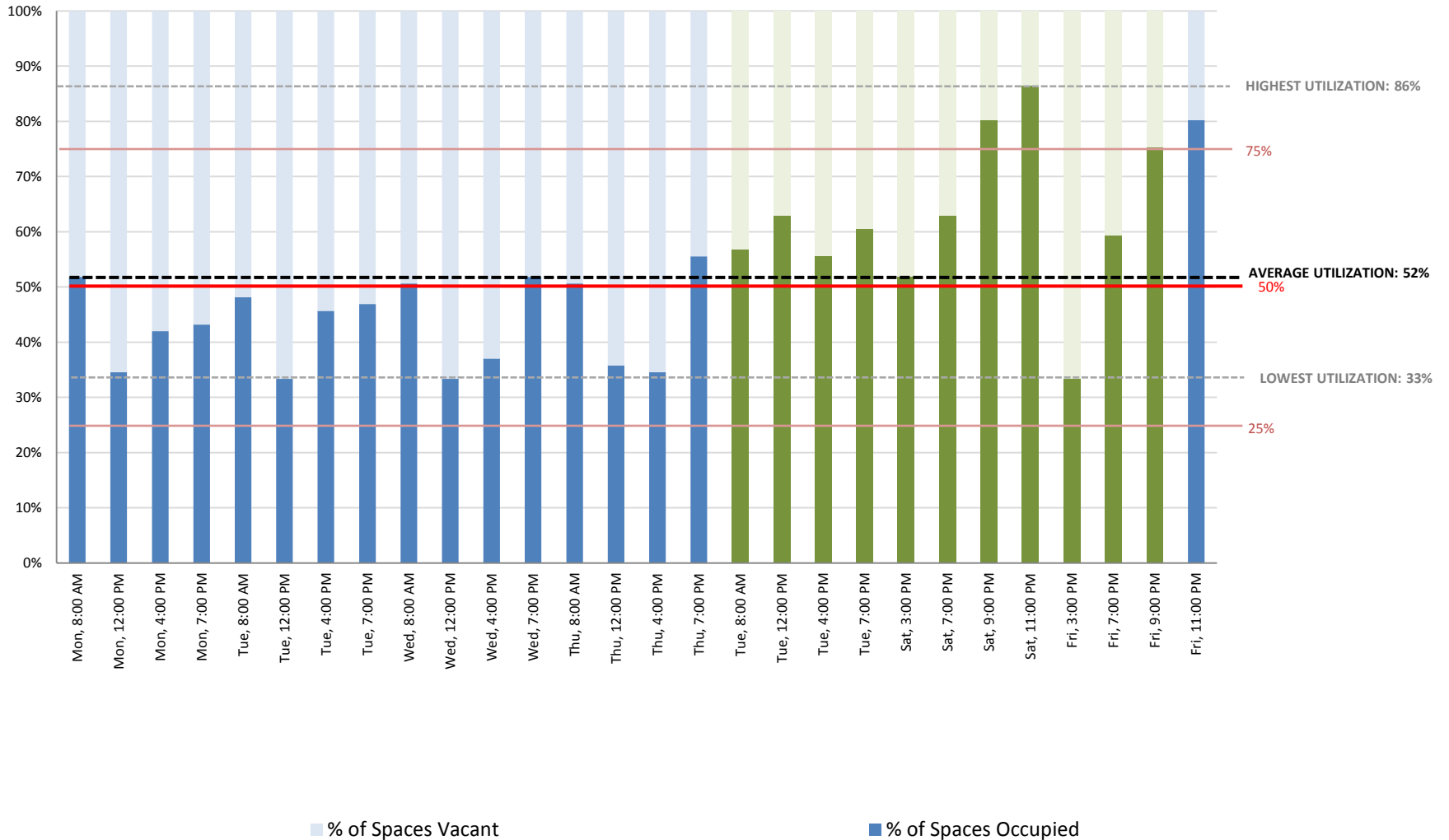
0 vehicles / 3 spaces

Missouri 1 North (n/6)	Missouri 1 South (n/9)	Missouri 2 North (n/16)	Missouri 2 South (n/13)	Missouri 3 North (n/3)	Missouri 3 South (n/7)	Coldwell 1 West (n/8)	Coldwell 1 East (n/6)	Coldwell 2 West (n/10)	Coldwell 2 East (n/3)	TOTAL (n/81)
2.06	6.38	9.75	4.81	0.81	4.38	4.56	0.13	2.31	0	35.19
34%	71%	61%	37%	27%	63%	57%	2%	23%	0%	43%

**43%  
Utilization**

# Overall Utilization Rate by Count

February 22 - May 13, 2016





# Monday February 22 – 8 A.M.

Missouri 1, North



1 vehicle / 6 spaces

Missouri 1, South



7 vehicles / 9 spaces

Missouri 2, North



8 vehicles / 16 spaces

Missouri 2, South



13 vehicles / 13 spaces

Missouri 3, North



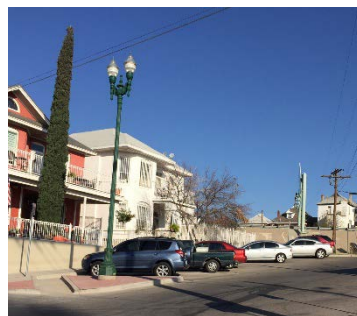
2 vehicles / 3 spaces

Missouri 3, South



5 vehicles / 7 spaces

Coldwell 1, West



6 vehicles / 8 spaces

Coldwell 1, East



0 vehicles / 6 spaces

Coldwell 2, West



0 vehicles / 10 spaces

Coldwell 2, East



0 vehicles / 3 spaces

Day	Time	Missouri 1 North (n/6)	Missouri 1 South (n/9)	Missouri 2 North (n/16)	Missouri 2 South (n/13)	Missouri 3 North (n/3)	Missouri 3 South (n/7)	Coldwell 1 West (n/8)	Coldwell 1 East (n/6)	Coldwell 2 West (n/10)	Coldwell 2 East (n/3)	TOTAL (n/81)
Monday	8:00 AM	1	7	8	13	2	5	6	0	0	0	42

**52%  
Utilization**

# Monday February 22 – 12 P.M.

Missouri 1, North



1 vehicle / 6 spaces

Missouri 1, South



8 vehicles / 9 spaces

Missouri 2, North



6 vehicles / 16 spaces

Missouri 2, South



3 vehicles / 13 spaces

Missouri 3, North



4 vehicles / 3 spaces

Missouri 3, South



4 vehicles / 7 spaces

Coldwell 1, West



4 vehicles / 8 spaces

Coldwell 1, East



0 vehicles / 6 spaces

Coldwell 2, West



0 vehicles / 10 spaces

Coldwell 2, East



0 vehicles / 3 spaces

Day	Time	Missouri 1 North (n/6)	Missouri 1 South (n/9)	Missouri 2 North (n/16)	Missouri 2 South (n/13)	Missouri 3 North (n/3)	Missouri 3 South (n/7)	Coldwell 1 West (n/8)	Coldwell 1 East (n/6)	Coldwell 2 West (n/10)	Coldwell 2 East (n/3)	TOTAL (n/81)
Monday	12:00 PM	1	8	6	3	2	4	4	0	0	0	28

**35%  
Utilization**



# Monday February 22 – 4 P.M.

Missouri 1, North



1 vehicle / 6 spaces

Missouri 1, South



5 vehicles / 9 spaces

Missouri 2, North



11 vehicles / 16 spaces

Missouri 2, South



3 vehicles / 13 spaces

Missouri 3, North



1 vehicle / 3 spaces

Missouri 3, South



5 vehicles / 7 spaces

Coldwell 1, West



6 vehicles / 8 spaces

Coldwell 1, East



0 vehicles / 6 spaces

Coldwell 2, West



2 vehicles / 10 spaces

Coldwell 2, East



0 vehicles / 3 spaces

Day	Time	Missouri 1 North (n/6)	Missouri 1 South (n/9)	Missouri 2 North (n/16)	Missouri 2 South (n/13)	Missouri 3 North (n/3)	Missouri 3 South (n/7)	Coldwell 1 West (n/8)	Coldwell 1 East (n/6)	Coldwell 2 West (n/10)	Coldwell 2 East (n/3)	TOTAL (n/81)
Monday	4:00 PM	1	5	11	3	1	5	6	0	2	0	34

**42%  
Utilization**

# Monday February 22 – 7 P.M.

Missouri 1, North



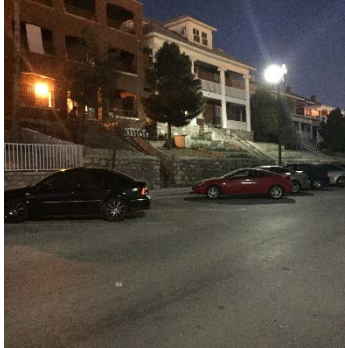
1 vehicle / 6 spaces

Missouri 1, South



5 vehicles / 9 spaces

Missouri 2, North



11 vehicles / 16 spaces

Missouri 2, South



3 vehicles / 13 spaces

Missouri 3, North



1 vehicle / 3 spaces

Missouri 3, South



5 vehicles / 7 spaces

Coldwell 1, West



6 vehicles / 8 spaces

Coldwell 1, East



0 vehicles / 6 spaces

Coldwell 2, West



3 vehicles / 10 spaces

Coldwell 2, East



0 vehicles / 3 spaces

Day	Time	Missouri 1 North (n/6)	Missouri 1 South (n/9)	Missouri 2 North (n/16)	Missouri 2 South (n/13)	Missouri 3 North (n/3)	Missouri 3 South (n/7)	Coldwell 1 West (n/8)	Coldwell 1 East (n/6)	Coldwell 2 West (n/10)	Coldwell 2 East (n/3)	TOTAL (n/81)
Monday	7:00 PM	1	5	11	3	1	5	6	0	3	0	35

**43%  
Utilization**



# Tuesday February 23 – 8 A.M.

Missouri 1, North



1 vehicle / 6 spaces

Missouri 1, South



6 vehicles / 9 spaces

Missouri 2, North



11 vehicles / 16 spaces

Missouri 2, South



9 vehicles / 13 spaces

Missouri 3, North



1 vehicle / 3 spaces

Missouri 3, South



5 vehicles / 7 spaces

Coldwell 1, West



5 vehicles / 8 spaces

Coldwell 1, East



1 vehicle / 6 spaces

Coldwell 2, West



0 vehicles / 10 spaces

Coldwell 2, East



0 vehicles / 3 spaces

Day	Time	Missouri 1 North (n/6)	Missouri 1 South (n/9)	Missouri 2 North (n/16)	Missouri 2 South (n/13)	Missouri 3 North (n/3)	Missouri 3 South (n/7)	Coldwell 1 West (n/8)	Coldwell 1 East (n/6)	Coldwell 2 West (n/10)	Coldwell 2 East (n/3)	TOTAL (n/81)
Tuesday	8:00 AM	1	6	11	9	1	5	5	1	0	0	39

**48%  
Utilization**

# Tuesday February 23 – 12 P.M.

Missouri 1, North



2 vehicle / 6 spaces

Missouri 1, South



5 vehicles / 9 spaces

Missouri 2, North



8 vehicles / 16 spaces

Missouri 2, South



3 vehicles / 13 spaces

Missouri 3, North



1 vehicle / 3 spaces

Missouri 3, South



3 vehicles / 7 spaces

Coldwell 1, West



3 vehicles / 8 spaces

Coldwell 1, East



0 vehicles / 6 spaces

Coldwell 2, West



2 vehicles / 10 spaces

Coldwell 2, East



0 vehicles / 3 spaces

Day	Time	Missouri 1 North (n/6)	Missouri 1 South (n/9)	Missouri 2 North (n/16)	Missouri 2 South (n/13)	Missouri 3 North (n/3)	Missouri 3 South (n/7)	Coldwell 1 West (n/8)	Coldwell 1 East (n/6)	Coldwell 2 West (n/10)	Coldwell 2 East (n/3)	TOTAL (n/81)
Tuesday	12:00 PM	2	5	8	3	1	3	3	0	2	0	27

**33%  
Utilization**



# Tuesday February 23 – 4 P.M.

Missouri 1, North



1 vehicle / 6 spaces

Missouri 1, South



8 vehicles / 9 spaces

Missouri 2, North



12 vehicles / 16 spaces

Missouri 2, South



4 vehicles / 13 spaces

Missouri 3, North



0 vehicles / 3 spaces

Missouri 3, South



6 vehicles / 7 spaces

Coldwell 1, West



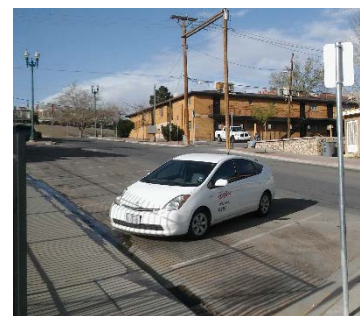
6 vehicles / 8 spaces

Coldwell 1, East



0 vehicles / 6 spaces

Coldwell 2, West



0 vehicles / 10 spaces

Coldwell 2, East



0 vehicles / 3 spaces

Day	Time	Missouri 1 North (n/6)	Missouri 1 South (n/9)	Missouri 2 North (n/16)	Missouri 2 South (n/13)	Missouri 3 North (n/3)	Missouri 3 South (n/7)	Coldwell 1 West (n/8)	Coldwell 1 East (n/6)	Coldwell 2 West (n/10)	Coldwell 2 East (n/3)	TOTAL (n/81)
Tuesday	4:00 PM	1	8	12	4	0	6	6	0	0	0	37

**46%  
Utilization**

# Tuesday February 23 – 7 P.M.

Missouri 1, North



2 vehicles / 6 spaces

Missouri 1, South



9 vehicles / 9 spaces

Missouri 2, North



10 vehicles / 16 spaces

Missouri 2, South



3 vehicles / 13 spaces

Missouri 3, North



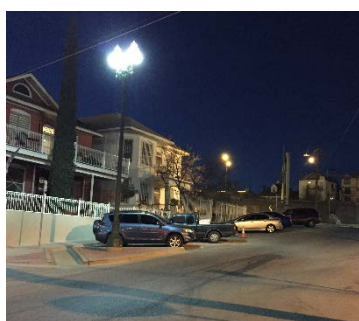
0 vehicles / 3 spaces

Missouri 3, South



5 vehicles / 7 spaces

Coldwell 1, West



5 vehicles / 8 spaces

Coldwell 1, East



0 vehicles / 6 spaces

Coldwell 2, West



4 vehicles / 10 spaces

Coldwell 2, East



0 vehicles / 3 spaces

Day	Time	Missouri 1 North (n/6)	Missouri 1 South (n/9)	Missouri 2 North (n/16)	Missouri 2 South (n/13)	Missouri 3 North (n/3)	Missouri 3 South (n/7)	Coldwell 1 West (n/8)	Coldwell 1 East (n/6)	Coldwell 2 West (n/10)	Coldwell 2 East (n/3)	TOTAL (n/81)
Tuesday	7:00 PM	2	9	10	3	0	5	5	0	4	0	38

**47%  
Utilization**



# Wednesday February 24 – 8 A.M.

Missouri 1, North



3 vehicles / 6 spaces

Missouri 1, South



3 vehicles / 9 spaces

Missouri 2, North



14 vehicles / 16 spaces

Missouri 2, South



9 vehicles / 13 spaces

Missouri 3, North



1 vehicle / 3 spaces

Missouri 3, South



4 vehicles / 7 spaces

Coldwell 1, West



6 vehicles / 8 spaces

Coldwell 1, East



1 vehicle / 6 spaces

Coldwell 2, West



0 vehicles / 10 spaces

Coldwell 2, East



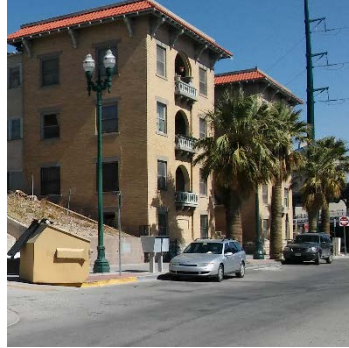
0 vehicles / 3 spaces

Day	Time	Missouri 1 North (n/6)	Missouri 1 South (n/9)	Missouri 2 North (n/16)	Missouri 2 South (n/13)	Missouri 3 North (n/3)	Missouri 3 South (n/7)	Coldwell 1 West (n/8)	Coldwell 1 East (n/6)	Coldwell 2 West (n/10)	Coldwell 2 East (n/3)	TOTAL (n/81)
Wednesday	8:00 AM	3	3	14	9	1	4	6	1	0	0	41

**51%  
Utilization**

# Wednesday February 24 – 12 P.M.

Missouri 1, North



2 vehicles / 6 spaces

Missouri 1, South



4 vehicles / 9 spaces

Missouri 2, North



5 vehicles / 16 spaces

Missouri 2, South



3 vehicles / 13 spaces

Missouri 3, North



1 vehicle / 3 spaces

Missouri 3, South



4 vehicles / 7 spaces

Coldwell 1, West



5 vehicles / 8 spaces

Coldwell 1, East



0 vehicles / 6 spaces

Coldwell 2, West



3 vehicles / 10 spaces

Coldwell 2, East



0 vehicles / 3 spaces

Day	Time	Missouri 1 North (n/6)	Missouri 1 South (n/9)	Missouri 2 North (n/16)	Missouri 2 South (n/13)	Missouri 3 North (n/3)	Missouri 3 South (n/7)	Coldwell 1 West (n/8)	Coldwell 1 East (n/6)	Coldwell 2 West (n/10)	Coldwell 2 East (n/3)	TOTAL (n/81)
Wednesday	12:00 PM	2	4	5	3	1	4	5	0	3	0	27

**33%**  
**Utilization**



# Wednesday February 24 – 4 P.M.

Missouri 1, North



2 vehicles / 6 spaces

Missouri 1, South



6 vehicles / 9 spaces

Missouri 2, North



8 vehicles / 16 spaces

Missouri 2, South



2 vehicles / 13 spaces

Missouri 3, North



0 vehicles / 3 spaces

Missouri 3, South



5 vehicles / 7 spaces

Coldwell 1, West



4 vehicles / 8 spaces

Coldwell 1, East



0 vehicles / 6 spaces

Coldwell 2, West



3 vehicles / 10 spaces

Coldwell 2, East



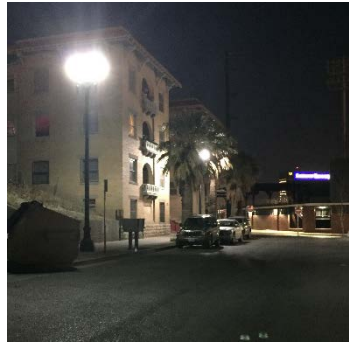
0 vehicles / 3 spaces

Day	Time	Missouri 1 North (n/6)	Missouri 1 South (n/9)	Missouri 2 North (n/16)	Missouri 2 South (n/13)	Missouri 3 North (n/3)	Missouri 3 South (n/7)	Coldwell 1 West (n/8)	Coldwell 1 East (n/6)	Coldwell 2 West (n/10)	Coldwell 2 East (n/3)	TOTAL (n/81)
Wednesday	4:00 PM	2	6	8	2	0	5	4	0	3	0	30

**37%**  
**Utilization**

# Wednesday February 24 – 7 P.M.

Missouri 1, North



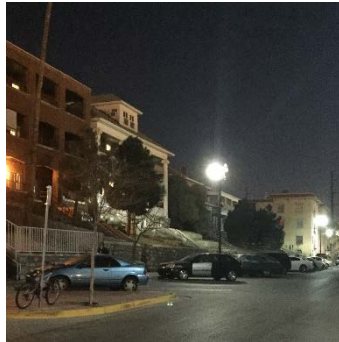
3 vehicles / 6 spaces

Missouri 1, South



9 vehicles / 9 spaces

Missouri 2, North



11 vehicles / 16 spaces

Missouri 2, South



4 vehicles / 13 spaces

Missouri 3, North



0 vehicles / 3 spaces

Missouri 3, South



5 vehicles / 7 spaces

Coldwell 1, West



5 vehicles / 8 spaces

Coldwell 1, East



0 vehicles / 6 spaces

Coldwell 2, West



5 vehicles / 10 spaces

Coldwell 2, East



0 vehicles / 3 spaces

Day	Time	Missouri 1 North (n/6)	Missouri 1 South (n/9)	Missouri 2 North (n/16)	Missouri 2 South (n/13)	Missouri 3 North (n/3)	Missouri 3 South (n/7)	Coldwell 1 West (n/8)	Coldwell 1 East (n/6)	Coldwell 2 West (n/10)	Coldwell 2 East (n/3)	TOTAL (n/81)
Wednesday	7:00 PM	3	9	11	4	0	5	5	0	5	0	42

**52%  
Utilization**



# Thursday February 25 – 8 A.M.

Missouri 1, North



5 vehicles / 6 spaces

Missouri 1, South



7 vehicles / 9 spaces

Missouri 2, North



11 vehicles / 16 spaces

Missouri 2, South



10 vehicles / 13 spaces

Missouri 3, North



1 vehicle / 3 spaces

Missouri 3, South



4 vehicles / 7 spaces

Coldwell 1, West



3 vehicles / 8 spaces

Coldwell 1, East



0 vehicles / 6 spaces

Coldwell 2, West



0 vehicles / 10 spaces

Coldwell 2, East



0 vehicles / 3 spaces

Day	Time	Missouri 1 North (n/6)	Missouri 1 South (n/9)	Missouri 2 North (n/16)	Missouri 2 South (n/13)	Missouri 3 North (n/3)	Missouri 3 South (n/7)	Coldwell 1 West (n/8)	Coldwell 1 East (n/6)	Coldwell 2 West (n/10)	Coldwell 2 East (n/3)	TOTAL (n/81)
Thursday	8:00AM	5	7	11	10	1	4	3	0	0	0	41

**51%  
Utilization**

# Thursday February 25 – 12 P.M.

Missouri 1, North



3 vehicles / 6 spaces

Missouri 1, South



6 vehicles / 9 spaces

Missouri 2, North



7 vehicles / 16 spaces

Missouri 2, South



5 vehicles / 13 spaces

Missouri 3, North



1 vehicle / 3 spaces

Missouri 3, South



2 vehicles / 7 spaces

Coldwell 1, West



3 vehicles / 8 spaces

Coldwell 1, East



0 vehicles / 6 spaces

Coldwell 2, West



2 vehicles / 10 spaces

Coldwell 2, East



0 vehicles / 3 spaces

Day	Time	Missouri 1 North (n/6)	Missouri 1 South (n/9)	Missouri 2 North (n/16)	Missouri 2 South (n/13)	Missouri 3 North (n/3)	Missouri 3 South (n/7)	Coldwell 1 West (n/8)	Coldwell 1 East (n/6)	Coldwell 2 West (n/10)	Coldwell 2 East (n/3)	TOTAL (n/81)
Thursday	12:00 PM	3	6	7	5	1	2	3	0	2	0	29

**36%  
Utilization**



# Thursday February 25 – 4 P.M.

Missouri 1, North



1 vehicle / 6 spaces

Missouri 1, South



6 vehicles / 9 spaces

Missouri 2, North



10 vehicles / 16 spaces

Missouri 2, South



1 vehicle / 13 spaces

Missouri 3, North



0 vehicles / 3 spaces

Missouri 3, South



4 vehicles / 7 spaces

Coldwell 1, West



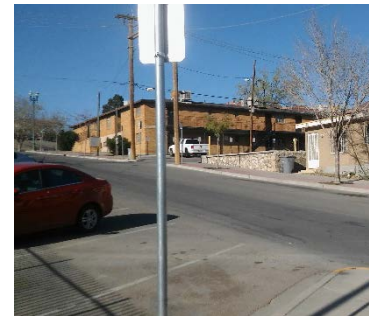
2 vehicles / 8 spaces

Coldwell 1, East



0 vehicles / 6 spaces

Coldwell 2, West



4 vehicles / 10 spaces

Coldwell 2, East



0 vehicles / 3 spaces

Day	Time	Missouri 1 North (n/6)	Missouri 1 South (n/9)	Missouri 2 North (n/16)	Missouri 2 South (n/13)	Missouri 3 North (n/3)	Missouri 3 South (n/7)	Coldwell 1 West (n/8)	Coldwell 1 East (n/6)	Coldwell 2 West (n/10)	Coldwell 2 East (n/3)	TOTAL (n/81)
Thursday	4:00 PM	1	6	10	1	0	4	2	0	4	0	28

**35%  
Utilization**

# Thursday February 25 – 7 P.M.

Missouri 1, North



4 vehicles / 6 spaces

Missouri 1, South



8 vehicles / 9 spaces

Missouri 2, North



13 vehicles / 16 spaces

Missouri 2, South



2 vehicles / 13 spaces

Missouri 3, North



1 vehicle / 3 spaces

Missouri 3, South



4 vehicles / 7 spaces

Coldwell 1, West



4 vehicles / 8 spaces

Coldwell 1, East



0 vehicles / 6 spaces

Coldwell 2, West



9 vehicles / 10 spaces

Coldwell 2, East



0 vehicles / 3 spaces

Day	Time	Missouri 1 North (n/6)	Missouri 1 South (n/9)	Missouri 2 North (n/16)	Missouri 2 South (n/13)	Missouri 3 North (n/3)	Missouri 3 South (n/7)	Coldwell 1 West (n/8)	Coldwell 1 East (n/6)	Coldwell 2 West (n/10)	Coldwell 2 East (n/3)	TOTAL (n/81)
Thursday	7:00 PM	4	8	13	2	1	4	4	0	9	0	45

**56%  
Utilization**



# Tuesday May 3 – 8 A.M.

Missouri 1, North



3 vehicles / 6 spaces

Missouri 1, South



9 vehicles / 9 spaces

Missouri 2, North



12 vehicles / 16 spaces

Missouri 2, South



10 vehicles / 13 spaces

Missouri 3, North



2 vehicles / 3 spaces

Missouri 3, South



5 vehicles / 7 spaces

Coldwell 1, West



4 vehicles / 8 spaces

Coldwell 1, East



0 vehicles / 6 spaces

Coldwell 2, West



1 vehicle / 10 spaces

Coldwell 2, East



0 vehicles / 3 spaces

Day	Time	Missouri 1 North (n/6)	Missouri 1 South (n/9)	Missouri 2 North (n/16)	Missouri 2 South (n/13)	Missouri 3 North (n/3)	Missouri 3 South (n/7)	Coldwell 1 West (n/8)	Coldwell 1 East (n/6)	Coldwell 2 West (n/10)	Coldwell 2 East (n/3)	TOTAL (n/81)
Tuesday	8:00 AM	3	9	12	10	2	5	4	0	1	0	46

**57%  
Utilization**

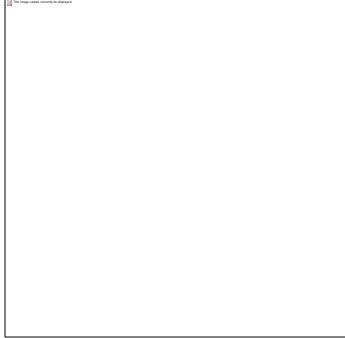
# Tuesday May 3 – 12 P.M.

Missouri 1, North



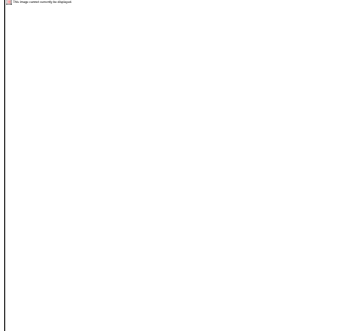
3 vehicles / 6 spaces

Missouri 1, South



9 vehicles / 9 spaces

Missouri 2, North



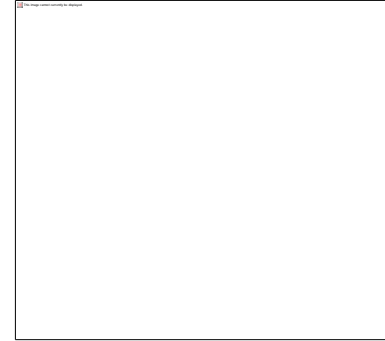
13 vehicles / 16 spaces

Missouri 2, South



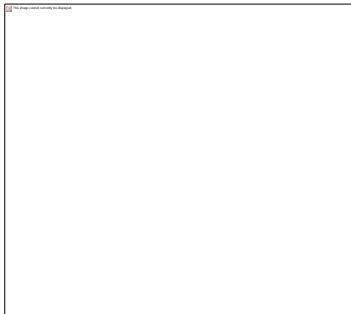
10 vehicles / 13 spaces

Missouri 3, North



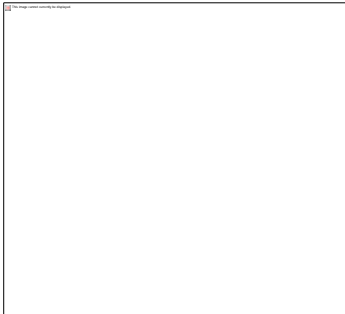
1 vehicle / 3 spaces

Missouri 3, South



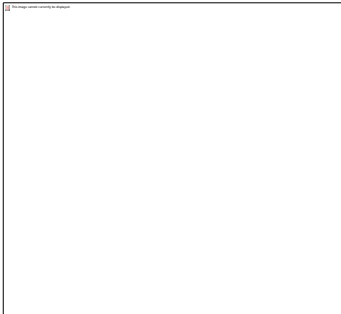
3 vehicles / 7 spaces

Coldwell 1, West



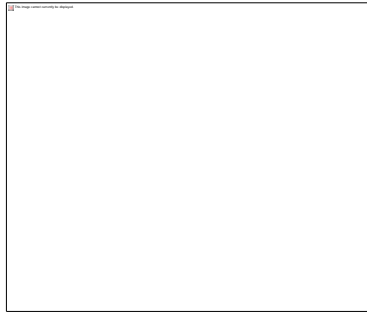
2 vehicles / 8 spaces

Coldwell 1, East



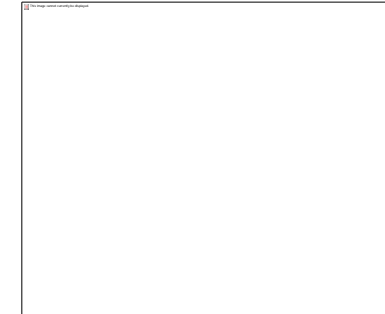
1 vehicle / 6 spaces

Coldwell 2, West



9 vehicles / 10 spaces

Coldwell 2, East



0 vehicles / 3 spaces

Day	Time	Missouri 1 North (n/6)	Missouri 1 South (n/9)	Missouri 2 North (n/16)	Missouri 2 South (n/13)	Missouri 3 North (n/3)	Missouri 3 South (n/7)	Coldwell 1 West (n/8)	Coldwell 1 East (n/6)	Coldwell 2 West (n/10)	Coldwell 2 East (n/3)	TOTAL (n/81)
Tuesday	12:00 PM	3	9	13	10	1	3	2	1	9	0	51

**63%  
Utilization**

# Tuesday May 3 – 4 P.M.

Missouri 1, North



3 vehicles / 6 spaces

Missouri 1, South



5 vehicles / 9 spaces

Missouri 2, North



7 vehicles / 16 spaces

Missouri 2, South



7 vehicles / 13 spaces

Missouri 3, North



1 vehicle / 3 spaces

Missouri 3, South



5 vehicles / 7 spaces

Coldwell 1, West



7 vehicles / 8 spaces

Coldwell 1, East



2 vehicles / 6 spaces

Coldwell 2, West



8 vehicles / 10 spaces

Coldwell 2, East



0 vehicles / 3 spaces

Day	Time	Missouri 1 North (n/6)	Missouri 1 South (n/9)	Missouri 2 North (n/16)	Missouri 2 South (n/13)	Missouri 3 North (n/3)	Missouri 3 South (n/7)	Coldwell 1 West (n/8)	Coldwell 1 East (n/6)	Coldwell 2 West (n/10)	Coldwell 2 East (n/3)	TOTAL (n/81)
Tuesday	4:00 PM	3	5	7	7	1	5	7	2	8	0	45

**56%  
Utilization**



# Tuesday May 3 – 7 P.M.

Missouri 1, North



2 vehicles / 6 spaces

Missouri 1, South



8 vehicles / 9 spaces

Missouri 2, North



11 vehicles / 16 spaces

Missouri 2, South



8 vehicles / 13 spaces

Missouri 3, North



1 vehicle / 3 spaces

Missouri 3, South



6 vehicles / 7 spaces

Coldwell 1, West



6 vehicles / 8 spaces

Coldwell 1, East



0 vehicles / 6 spaces

Coldwell 2, West



7 vehicles / 10 spaces

Coldwell 2, East



0 vehicles / 3 spaces

Day	Time	Missouri 1 North (n/6)	Missouri 1 South (n/9)	Missouri 2 North (n/16)	Missouri 2 South (n/13)	Missouri 3 North (n/3)	Missouri 3 South (n/7)	Coldwell 1 West (n/8)	Coldwell 1 East (n/6)	Coldwell 2 West (n/10)	Coldwell 2 East (n/3)	TOTAL (n/81)
Tuesday	7:00 PM	2	8	11	8	1	6	6	0	7	0	49

**60%  
Utilization**

# Saturday May 7 – 3 P.M.

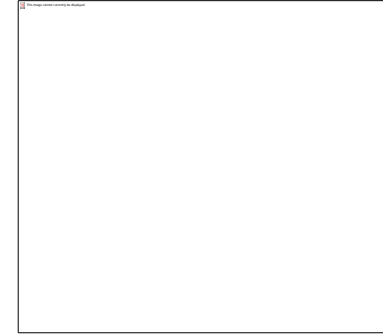
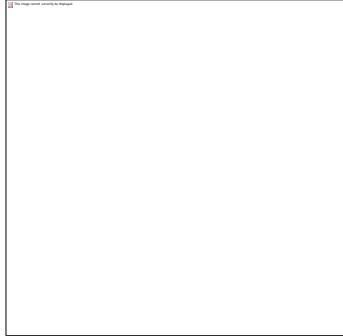
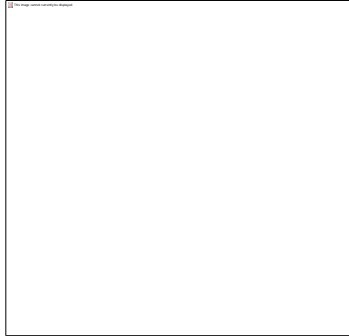
Missouri 1, North

Missouri 1, South

Missouri 2, North

Missouri 2, South

Missouri 3, North



3 vehicles / 6 spaces

8 vehicles / 9 spaces

12 vehicles / 16 spaces

7 vehicles / 13 spaces

1 vehicle / 3 spaces

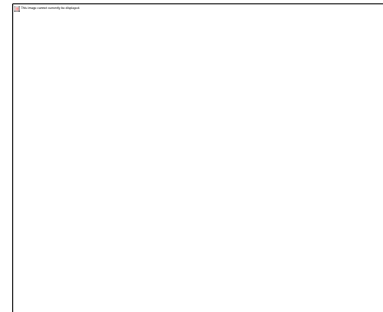
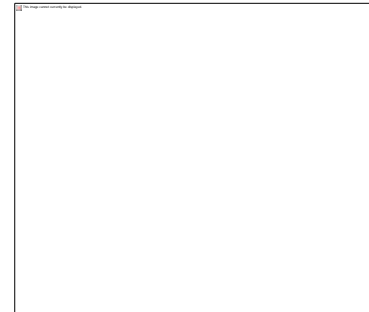
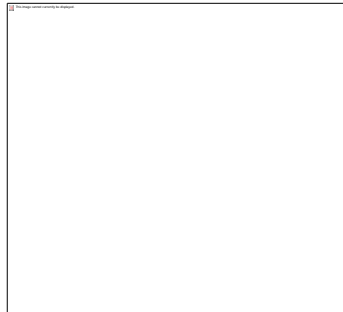
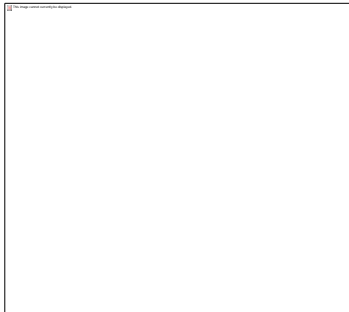
Missouri 3, South

Coldwell 1, West

Coldwell 1, East

Coldwell 2, West

Coldwell 2, East



4 vehicles / 7 spaces

5 vehicles / 8 spaces

0 vehicles / 6 spaces

2 vehicles / 10 spaces

0 vehicles / 3 spaces

Day	Time	Missouri 1 North (n/6)	Missouri 1 South (n/9)	Missouri 2 North (n/16)	Missouri 2 South (n/13)	Missouri 3 North (n/3)	Missouri 3 South (n/7)	Coldwell 1 West (n/8)	Coldwell 1 East (n/6)	Coldwell 2 West (n/10)	Coldwell 2 East (n/3)	TOTAL (n/81)
Saturday	3:00 PM	3	8	12	7	1	4	5	0	2	0	42

**52%  
Utilization**

# Saturday May 7 – 7 P.M.

Missouri 1, North



3 vehicles / 6 spaces

Missouri 1, South



8 vehicles / 9 spaces

Missouri 2, North



12 vehicles / 16 spaces

Missouri 2, South



11 vehicles / 13 spaces

Missouri 3, North



0 vehicles / 3 spaces

Missouri 3, South



3 vehicles / 7 spaces

Coldwell 1, West



6 vehicles / 8 spaces

Coldwell 1, East



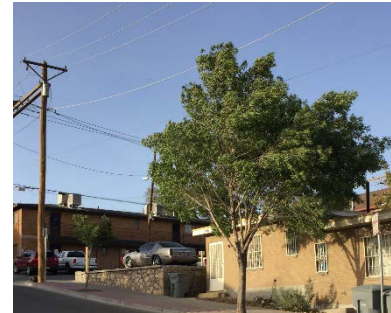
0 vehicles / 6 spaces

Coldwell 2, West



8 vehicles / 10 spaces

Coldwell 2, East



0 vehicles / 3 spaces

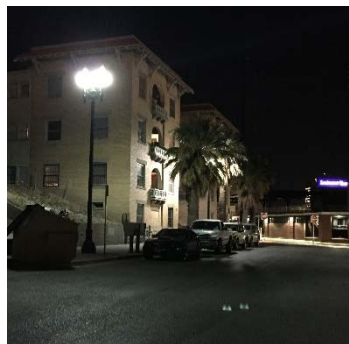
Day	Time	Missouri 1 North (n/6)	Missouri 1 South (n/9)	Missouri 2 North (n/16)	Missouri 2 South (n/13)	Missouri 3 North (n/3)	Missouri 3 South (n/7)	Coldwell 1 West (n/8)	Coldwell 1 East (n/6)	Coldwell 2 West (n/10)	Coldwell 2 East (n/3)	TOTAL (n/81)
Saturday	7:00 PM	3	8	12	11	0	3	6	0	8	0	51

**63%  
Utilization**



# Saturday May 7 – 9 P.M.

Missouri 1, North



3 vehicles / 6 spaces

Missouri 1, South



9 vehicles / 9 spaces

Missouri 2, North



14 vehicles / 16 spaces

Missouri 2, South



12 vehicles / 13 spaces

Missouri 3, North



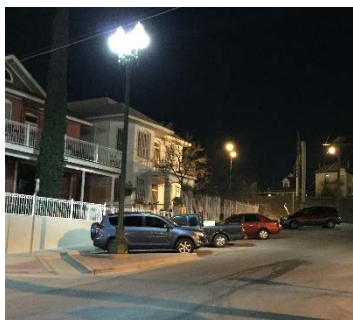
3 vehicles / 3 spaces

Missouri 3, South



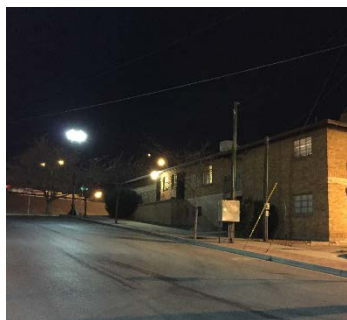
5 vehicles / 7 spaces

Coldwell 1, West



8 vehicles / 8 spaces

Coldwell 1, East



1 vehicle / 6 spaces

Coldwell 2, West



10 vehicles / 10 spaces

Coldwell 2, East



0 vehicles / 3 spaces

Day	Time	Missouri 1 North (n/6)	Missouri 1 South (n/9)	Missouri 2 North (n/16)	Missouri 2 South (n/13)	Missouri 3 North (n/3)	Missouri 3 South (n/7)	Coldwell 1 West (n/8)	Coldwell 1 East (n/6)	Coldwell 2 West (n/10)	Coldwell 2 East (n/3)	TOTAL (n/81)
Saturday	9:00 PM	3	9	14	12	3	5	8	1	10	0	65

**80%  
Utilization**

# Saturday May 7 – 11 P.M.

Missouri 1, North



6 vehicle / 6 spaces

Missouri 1, South



9 vehicles / 9 spaces

Missouri 2, North



16 vehicles / 16 spaces

Missouri 2, South



13 vehicles / 13 spaces

Missouri 3, North



1 vehicles / 3 spaces

Missouri 3, South



7 vehicles / 7 spaces

Coldwell 1, West



8 vehicles / 8 spaces

Coldwell 1, East



0 vehicles / 6 spaces

Coldwell 2, West



10 vehicles / 10 spaces

Coldwell 2, East



0 vehicles / 3 spaces

Day	Time	Missouri 1 North (n/6)	Missouri 1 South (n/9)	Missouri 2 North (n/16)	Missouri 2 South (n/13)	Missouri 3 North (n/3)	Missouri 3 South (n/7)	Coldwell 1 West (n/8)	Coldwell 1 East (n/6)	Coldwell 2 West (n/10)	Coldwell 2 East (n/3)	TOTAL (n/81)
Saturday	11:00 PM	6	9	16	13	1	7	8	0	10	0	70

**86%  
Utilization**

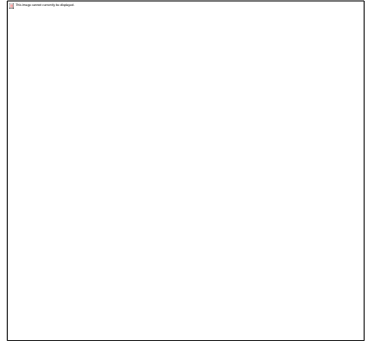
# Friday May 13 – 3 P.M.

Missouri 1, North



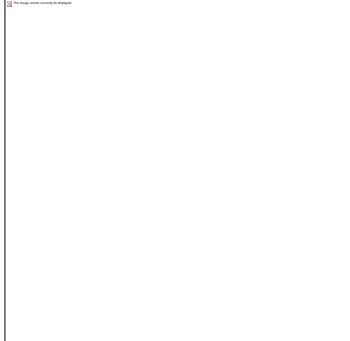
2 vehicle / 6 spaces

Missouri 1, South



8 vehicles / 9 spaces

Missouri 2, North



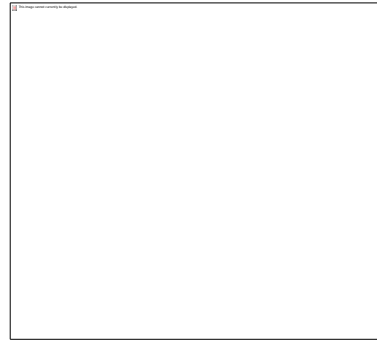
8 vehicles / 16 spaces

Missouri 2, South



4 vehicles / 13 spaces

Missouri 3, North



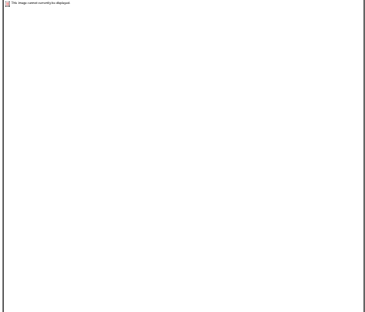
1 vehicles / 3 spaces

Missouri 3, South



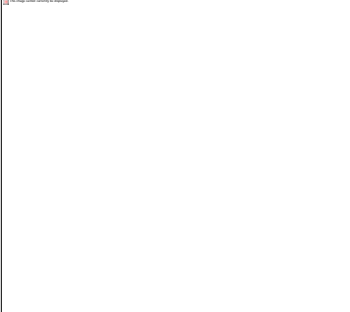
2 vehicles / 7 spaces

Coldwell 1, West



0 vehicles / 8 spaces

Coldwell 1, East



2 vehicles / 6 spaces

Coldwell 2, West



0 vehicles / 10 spaces

Coldwell 2, East



0 vehicles / 3 spaces

Day	Time	Missouri 1 North (n/6)	Missouri 1 South (n/9)	Missouri 2 North (n/16)	Missouri 2 South (n/13)	Missouri 3 North (n/3)	Missouri 3 South (n/7)	Coldwell 1 West (n/8)	Coldwell 1 East (n/6)	Coldwell 2 West (n/10)	Coldwell 2 East (n/3)	TOTAL (n/81)
Friday	3:00 PM	2	8	8	4	1	2	0	2	0	0	27

**33%  
Utilization**



# Friday May 13 – 7 P.M.

Missouri 1, North



4 vehicle / 6 spaces

Missouri 1, South



8 vehicles / 9 spaces

Missouri 2, North



13 vehicles / 16 spaces

Missouri 2, South



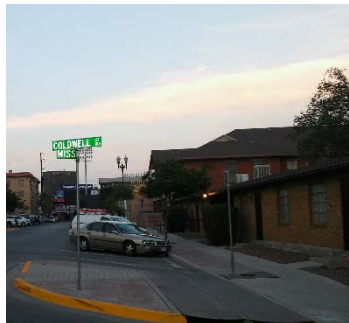
2 vehicles / 13 spaces

Missouri 3, North



1 vehicles / 3 spaces

Missouri 3, South



4 vehicles / 7 spaces

Coldwell 1, West



4 vehicles / 8 spaces

Coldwell 1, East



0 vehicles / 6 spaces

Coldwell 2, West



9 vehicles / 10 spaces

Coldwell 2, East



0 vehicles / 3 spaces

Day	Time	Missouri 1 North (n/6)	Missouri 1 South (n/9)	Missouri 2 North (n/16)	Missouri 2 South (n/13)	Missouri 3 North (n/3)	Missouri 3 South (n/7)	Coldwell 1 West (n/8)	Coldwell 1 East (n/6)	Coldwell 2 West (n/10)	Coldwell 2 East (n/3)	TOTAL (n/81)
Friday	7:00 PM	3	7	15	8	0	5	4	0	6	0	48

**59%  
Utilization**

# Friday May 13 – 9 P.M.

Missouri 1, North



4 vehicle / 6 spaces

Missouri 1, South



8 vehicles / 9 spaces

Missouri 2, North



16 vehicles / 16 spaces

Missouri 2, South



13 vehicles / 13 spaces

Missouri 3, North



0 vehicles / 3 spaces

Missouri 3, South



5 vehicles / 7 spaces

Coldwell 1, West



0 vehicles / 8 spaces

Coldwell 1, East



0 vehicles / 6 spaces

Coldwell 2, West



8 vehicles / 10 spaces

Coldwell 2, East



0 vehicles / 3 spaces

Day	Time	Missouri 1 North (n/6)	Missouri 1 South (n/9)	Missouri 2 North (n/16)	Missouri 2 South (n/13)	Missouri 3 North (n/3)	Missouri 3 South (n/7)	Coldwell 1 West (n/8)	Coldwell 1 East (n/6)	Coldwell 2 West (n/10)	Coldwell 2 East (n/3)	TOTAL (n/81)
Friday	9:00 PM	4	8	16	13	0	5	7	0	8	0	61

**75%  
Utilization**



# Friday May 13 – 11 P.M.

Missouri 1, North



3 vehicle / 6 spaces

Missouri 1, South



9 vehicles / 9 spaces

Missouri 2, North



15 vehicles / 16 spaces

Missouri 2, South



13 vehicles / 13 spaces

Missouri 3, North



3 vehicles / 3 spaces

Missouri 3, South



6 vehicles / 7 spaces

Coldwell 1, West



8 vehicles / 8 spaces

Coldwell 1, East



2 vehicles / 6 spaces

Coldwell 2, West



3 vehicles / 10 spaces

Coldwell 2, East



3 vehicles / 3 spaces

Day	Time	Missouri 1 North (n/6)	Missouri 1 South (n/9)	Missouri 2 North (n/16)	Missouri 2 South (n/13)	Missouri 3 North (n/3)	Missouri 3 South (n/7)	Coldwell 1 West (n/8)	Coldwell 1 East (n/6)	Coldwell 2 West (n/10)	Coldwell 2 East (n/3)	TOTAL (n/81)
Friday	11:00 PM	3	9	15	13	3	6	8	2	3	3	65

**80%  
Utilization**



Date	Day	Time	Missouri 1 North (n/6)	Missouri 1 South (n/9)	Missouri 2 North (n/16)	Missouri 2 South (n/13)	Missouri 3 North (n/3)	Missouri 3 South (n/7)	Coldwell 1 West (n/8)	Coldwell 1 East (n/6)	Coldwell 2 West (n/10)	Coldwell 2 East (n/3)	TOTAL (n/81)
2/22/2016	Mon.	8:00 AM	1	7	8	13	2	5	6	0	0	0	42
2/22/2016	Mon.	12:00 PM	1	8	6	3	2	4	4	0	0	0	28
2/22/2016	Mon.	4:00 PM	1	5	11	3	1	5	6	0	2	0	34
2/22/2016	Mon.	7:00 PM	1	5	11	3	1	5	6	0	3	0	35
2/23/2016	Tue.	8:00 AM	1	6	11	9	1	5	5	1	0	0	39
2/23/2016	Tue.	12:00 PM	2	5	8	3	1	3	3	0	2	0	27
2/23/2016	Tue.	4:00 PM	1	8	12	4	0	6	6	0	0	0	37
2/23/2016	Tue.	7:00 PM	2	9	10	3	0	5	5	0	4	0	38
2/24/2016	Wed.	8:00 AM	3	3	14	9	1	4	6	1	0	0	41
2/24/2016	Wed.	12:00 PM	2	4	5	3	1	4	5	0	3	0	27
2/24/2016	Wed.	4:00 PM	2	6	8	2	0	5	4	0	3	0	30
2/24/2016	Wed.	7:00 PM	3	9	11	4	0	5	5	0	5	0	42
2/25/2016	Thu.	8:00 AM	5	7	11	10	1	4	3	0	0	0	41
2/25/2016	Thu.	12:00 PM	3	6	7	5	1	2	3	0	2	0	29
2/25/2016	Thu.	4:00 PM	1	6	10	1	0	4	2	0	4	0	28
2/25/2016	Thu.	7:00 PM	4	8	13	2	1	4	4	0	9	0	45
5/3/2016	Tues.	8:00 AM	3	9	12	10	2	5	4	0	1	0	46
5/3/2016	Tues.	12:00 PM	3	9	13	10	1	3	2	1	9	0	51
5/3/2016	Tues.	4:00 PM	3	5	7	7	1	5	7	2	8	0	45
5/3/2016	Tues.	7:00 PM	2	8	11	8	1	6	6	0	7	0	49
5/7/2016	Sat.	3:00 PM	3	8	12	7	1	4	5	0	2	0	42
5/7/2016	Sat.	7:00 PM	3	8	12	11	0	3	6	0	8	0	51
5/7/2016	Sat.	9:00 PM	3	9	14	12	3	5	8	1	10	0	65
5/7/2016	Sat.	11:00 PM	6	9	16	13	1	7	8	0	10	0	70
5/13/2016	Fri.	3:00 PM	2	8	8	4	1	2	0	2	0	0	27
5/13/2016	Fri.	7:00 PM	3	7	15	8	0	5	4	0	6	0	48
5/13/2016	Fri.	9:00 PM	4	8	16	13	0	5	0	7	0	8	61
5/13/2016	Fri.	11:00 PM	3	9	15	13	3	6	2	8	3	3	65



# Proposed Title 12 Amendment

- Leave parking district boundary intact, but remove signage and install meters on 10 spaces on Coldwell. Metered parking would be open to the public, but residents with parking permits could park free of charge.
- Stripe parallel parking spaces on east side of Coldwell (approx. 8 spaces) and add meters. Parking would be open to the public, but residents with parking permits could park free of charge.
- Parking meters enforced 24 hours instead of free after 6 pm



# Questions?



