

CITY OF EL PASO, TEXAS
AGENDA ITEM DEPARTMENT HEAD'S SUMMARY FORM

DEPARTMENT: International Bridges Department

AGENDA DATE: Public Hearing: May 31, 2016

CONTACT PERSON/PHONE: Mathew McElroy, 915-533-7428,
McElroyMX@elpasotexas.gov

DISTRICT(S) AFFECTED: All Districts

SUBJECT:

Discussion and action on a Resolution that Schedule C, attached to the FY 2016 Budget Resolution and effective September 1, 2015, shall be amended, effective May 31, 2016, as set forth in Attachment A, to authorize revised toll charges within a specified price range for southbound commercial truck traffic as authorized by Title 12 of the City Code, to establish a reduced toll charges program and to allow the International Bridges Department director to set said variable charges within the specified price range listed in Attachment A, based on the following nonexclusive factors: 1) southbound international bridge commercial truck traffic per hour per day, 2) southbound commercial truck traffic volume per lane on the international bridges, and, 3) southbound commercial truck volume at the Bridge of the Americas at all levels of variable price range; and That the City Council approve the collection of \$1.00 from those toll charges listed in Attachment A which are set at or exceed \$1.00, to be deposited in an account designated by the City Comptroller which account would be restricted to pay for services offered by U.S. Customs and Border Protection ("CBP"), for City ports of entry infrastructure improvements, traffic management and any other purpose to support the "Section 559 and 560" programs as approved by City Council.

BACKGROUND/DISCUSSION:

The resolution revises tolls for empty commercial southbound truck traffic and establishes a reduced toll program managed by the International Bridges Department director and authorizes the collection of \$1.00 from the adjusted tolls to be set aside to support the Section 559 and 560 programs as approved by City Council.

This amendment to Schedule C was reviewed by the Lean Six Sigma Steering Committee overseeing improvement projects for the Zaragoza POE. The reduced fee structure will attract more traffic at the Ysleta/Zaragoza POE by diverting traffic that would otherwise use the Bridge of the Americas.

PRIOR COUNCIL ACTION:

N/A

AMOUNT AND SOURCE OF FUNDING:

N/A

BOARD/COMMISSION ACTION:

N/A

ATTACHMENTS:

Attachment A: Proposed Resolution Amending Schedule C

*******REQUIRED AUTHORIZATION*******

LEGAL: (if required)

FINANCE: (if required)

DEPARTMENT HEAD: Mathew S. McElroy
International Bridges Director

APPROVED FOR AGENDA:

CITY MANAGER: _____ **DATE:** _____

**RESOLUTION AMENDING SCHEDULE C FOR THE CITY OF EL PASO
FY 2016 BUDGET RESOLUTION**

WHEREAS, the City Council adopted the Budget Resolution for FY 2016 on August 18, 2015; and

WHEREAS, paragraph 51 of said Budget Resolution provides that revisions or additions to the fees set forth in Schedule C, attached to the Budget Resolution, may be approved by simple resolution of the City Council; and

WHEREAS, Title 12 of the City Code authorizes the international bridge tolls that apply to southbound traffic; and

WHEREAS, the City Council desires to revise the amounts charged for international bridge fees for southbound commercial vehicles as authorized in Title 12 of the City Code and on lines 277 - 281 of Schedule C; and

WHEREAS, the City Council desires to establish a reduced toll charges program at city-owned bridges for commercial truck traffic managed by the International Bridges Director.

WHEREAS, the City Council wishes to designate a certain dollar amount of international bridge crossing revenue specifically to support the Section 559 and 560 programs as approved by City Council.

NOW THEREFORE, BE IT RESOLVED BY THE CITY COUNCIL FOR THE CITY OF EL PASO:

That Schedule C, attached to the FY 2016 Budget Resolution and effective September 1, 2015, shall be amended, effective May 31, 2016, as set forth in Attachment A, to authorize revised toll charges within a specified price range for southbound commercial truck traffic as authorized by Title 12 of the City Code, to establish a reduced toll charges program and to allow the International Bridges Department director to set said variable charges within the specified price range listed in Attachment A, based on the following nonexclusive factors: 1) southbound international bridge commercial truck traffic per hour per day, 2) southbound commercial truck traffic volume per lane on the international bridges, and, 3) southbound commercial truck volume at the Bridge of the Americas at all levels of variable price range; and

That the City Council approve the collection of \$1.00 from those toll charges listed in Attachment A which are set at or exceed \$1.00, to be deposited in an account designated by the City Comptroller which account would be restricted to pay for services offered by U.S. Customs and Border Protection ("CBP"), for City ports of entry infrastructure improvements, traffic management and any other purpose to support the "Section 559 and 560" programs as approved by City Council.

(Signatures appear on the following page)

Passed and approved this ____ day of _____ 2016.

CITY OF EL PASO

Oscar Leeser
Mayor

ATTEST:

Richarda Duffy Momsen
City Clerk

APPROVED AS TO FORM:

Josette Flores
Assistant City Attorney

APPROVED AS TO CONTENT:

Mathew McElroy, Director
International Bridges Department

Attachment A
International Bridges Department

Revise the following lines in Schedule C, attached to the FY 2016 Budget Resolution

<u>Department</u>	<u>Account</u>	<u>Fee Description</u>	<u>Detail</u>	<u>City Code</u> <u>Section</u>	<u>Fee</u>
International Bridges	420500	Toll for International Bridges	Tolls Charge, Empty Tractor, without Trailer, 2 or 3 axles	12.78.010	Standard Fee: \$5.00; reduced fees may apply as set by the director with a Minimum Fee of \$3.00
International Bridges	420500	Toll for International Bridges	Tolls Charge, Empty Tractor, without Trailer, 2 or 3 axles, Between 3:00 PM and 8:00 PM	12.78.010	Standard Fee: \$4.00; reduced fees may apply as set by the director with a Minimum Fee of \$2.00
International Bridges	420500	Toll for International Bridges	Tolls Charge, Empty 2-axle Commercial Truck	12.78.010	Standard Fee: \$5.00; reduced fees may apply as set by the director with a Minimum Fee of \$3.00
International Bridges	420500	Toll for International Bridges	Tolls Charge, Empty Tractor with Empty Trailer, 3 axles or more	12.78.010	Standard Fee: \$7.50; reduced fees may apply as set by the director with a Minimum Fee of \$4.00
International Bridges	420500	Toll for International Bridges	Tolls Charge, Empty Commercial Truck, 3 axles or more	12.78.010	Standard Fee: \$7.50; reduced fees may apply as set by the director with a Minimum Fee of \$4.00



Proposed Schedule C Amendment

- Reduced Tolls for Empty Commercial Trucks (southbound traffic)

**Strategic Goal #1 – Create an Environment Conducive to
Strong, Sustainable Economic Development**



Bridge of the Americas SB Commercial Trucks – Routes





Bridge of the Americas

S. Copia St. | E. Paisano Dr.



"Delivering Outstanding Services"



Bridge of the Americas

S. Copia St. | E. Paisano Dr.



"Delivering Outstanding Services"



Bridge of the Americas

S. Copia St. | E. Paisano Dr.



"Delivering Outstanding Services"



Bridge of the Americas

S. Copia St. | E. Paisano Dr.



"Delivering Outstanding Services"



Bridge of the Americas

S. San Marcial St. | E. Paisano Dr.





Bridge of the Americas

S. San Marcial St. | E. Paisano Dr.



"Delivering Outstanding Services"



Bridge of the Americas

S. San Marcial St. | E. Paisano Dr.



"Delivering Outstanding Services"



Bridge of the Americas

S. San Marcial St. | E. Paisano Dr.

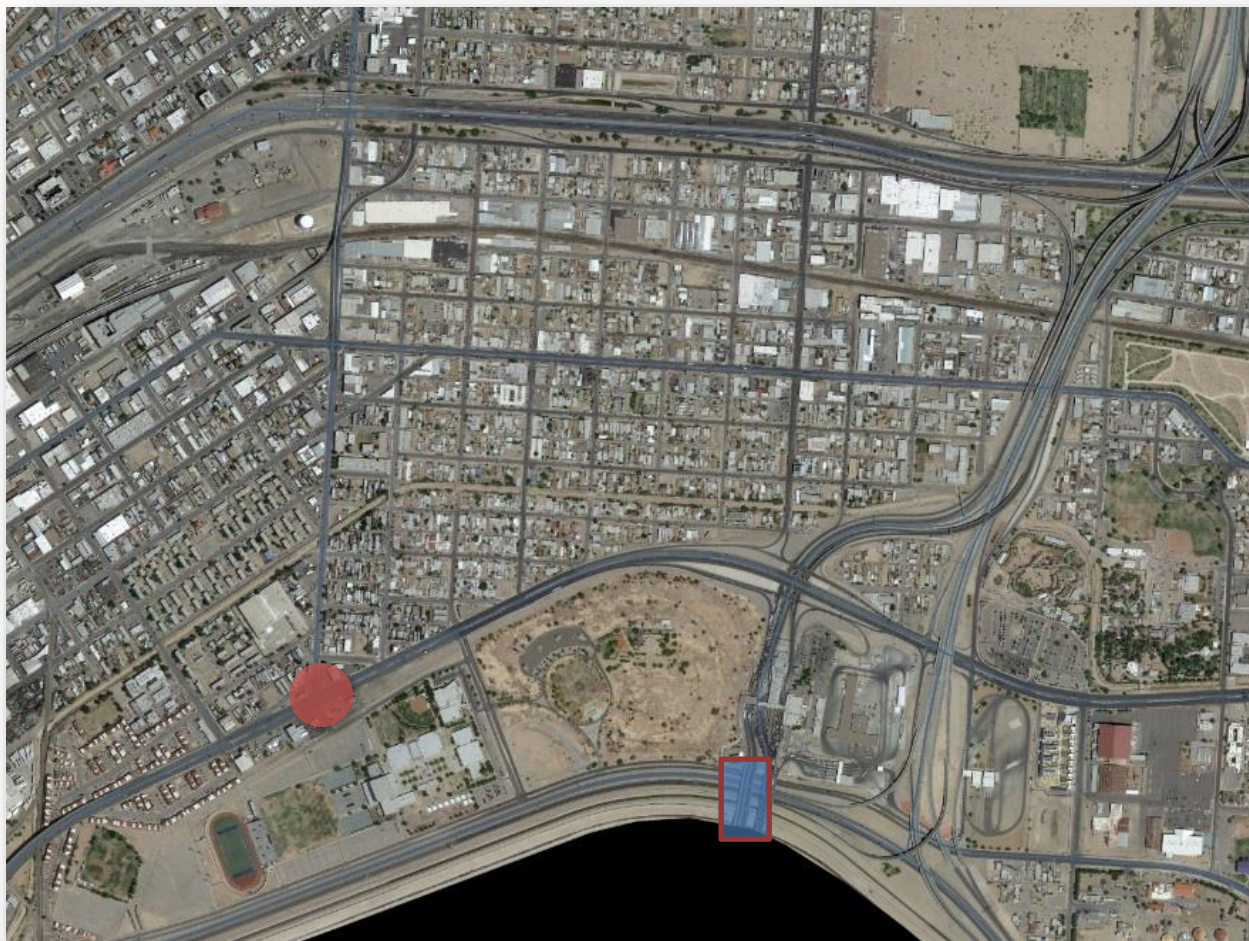


"Delivering Outstanding Services"



Bridge of the Americas

S. Piedras St. | E. Paisano Dr.



"Delivering Outstanding Services"



Bridge of the Americas

S. Piedras St. | E. Paisano Dr.



"Delivering Outstanding Services"



Bridge of the Americas

S. Piedras St. | E. Paisano Dr.



"Delivering Outstanding Services"



Bridge of the Americas

S. Piedras St. | E. Paisano Dr.

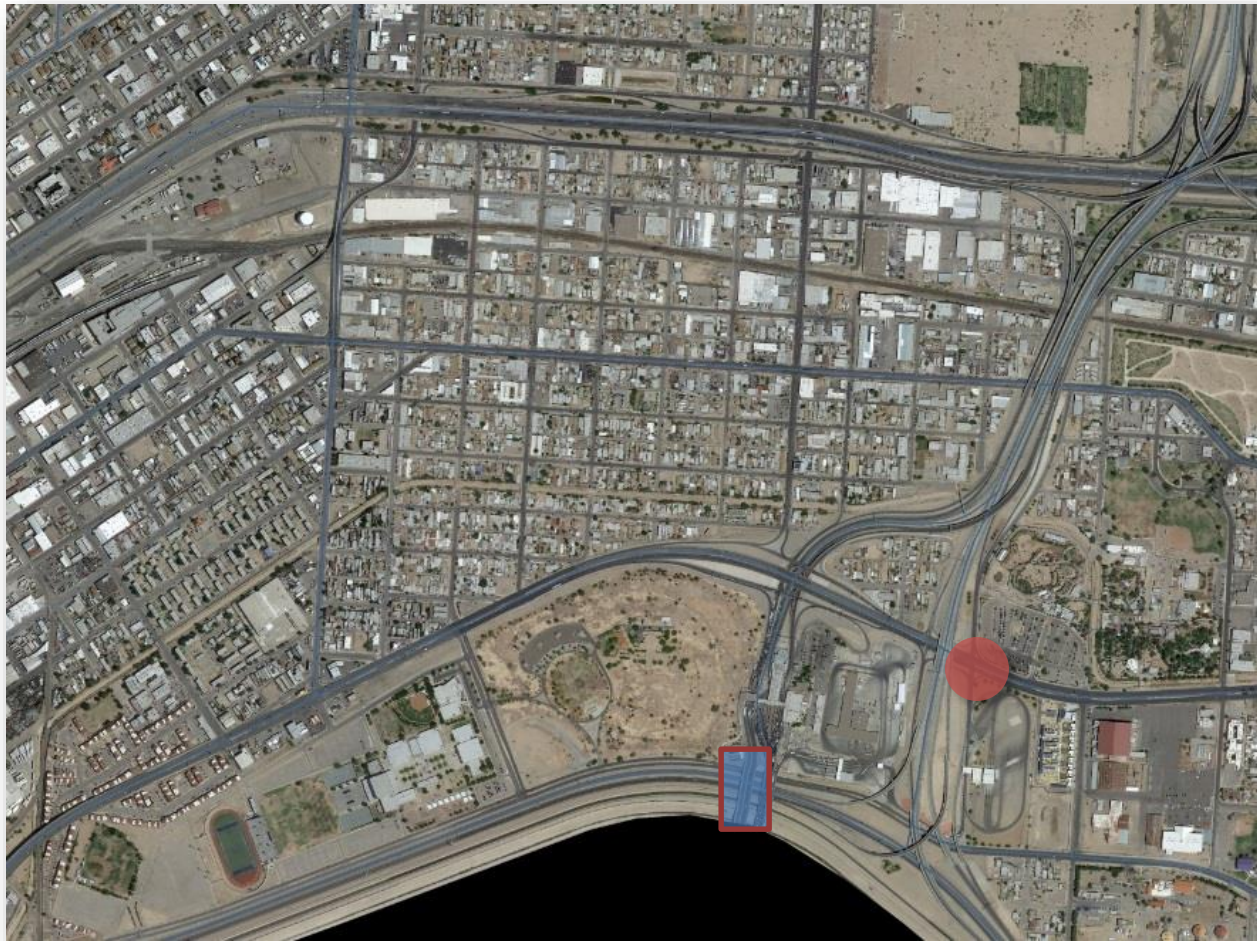


"Delivering Outstanding Services"



Bridge of the Americas

Patriot Freeway | E. Paisano Dr.



"Delivering Outstanding Services"



Bridge of the Americas

Patriot Freeway | E. Paisano Dr.



"Delivering Outstanding Services"



Bridge of the Americas

Patriot Freeway | E. Paisano Dr.



"Delivering Outstanding Services"



Bridge of the Americas

Patriot Freeway | E. Paisano Dr.



"Delivering Outstanding Services"



Reduced Tolls for Empty Commercial Trucks

Schedule C Amendment

- City Council area of concern
- Regular complaints regarding southbound traffic congestion at BOTA around Chamizal neighborhood
- International Bridges staff coordination with multiple agencies
- This item was reviewed by the Lean Six Sigma Steering Committee overseeing various improvement projects for the Zaragoza POE
- The reduced fee structure will attract more traffic at the Zaragoza POE by diverting traffic that would otherwise use the Bridge of the Americas
- Help reduce traffic and congestion in the area surrounding BOTA and the Chamizal neighborhood



Reduced Tolls for Empty Commercial Trucks

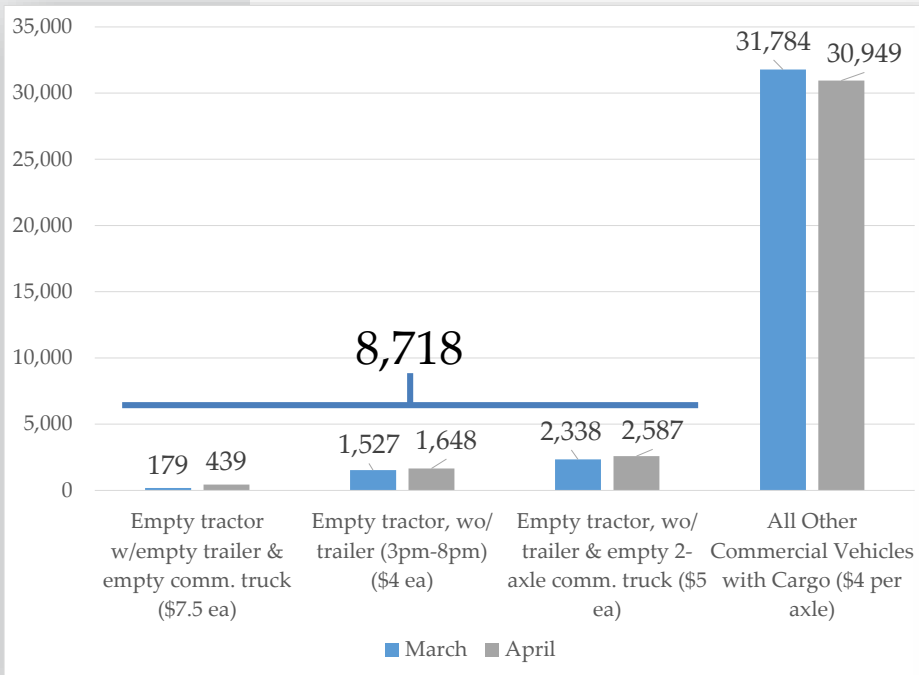
Background

- Effort to balance traffic between BOTA and Zaragoza POE for southbound empties
- Southbound empty commercial truck traffic began in March 2016 after construction in MX Aduanas was completed at Ysleta/Zaragoza POE
- Resolution establishes a reduced toll program that allows the IBD director to set rates within the specified range listed in Reso for empty commercial traffic headed southbound. This is typical of dynamic pricing structures.
- Also allows for the collection of \$1.00 from adjusted tolls to be set aside to support the Section 559 and 560 programs as approved by City Council.

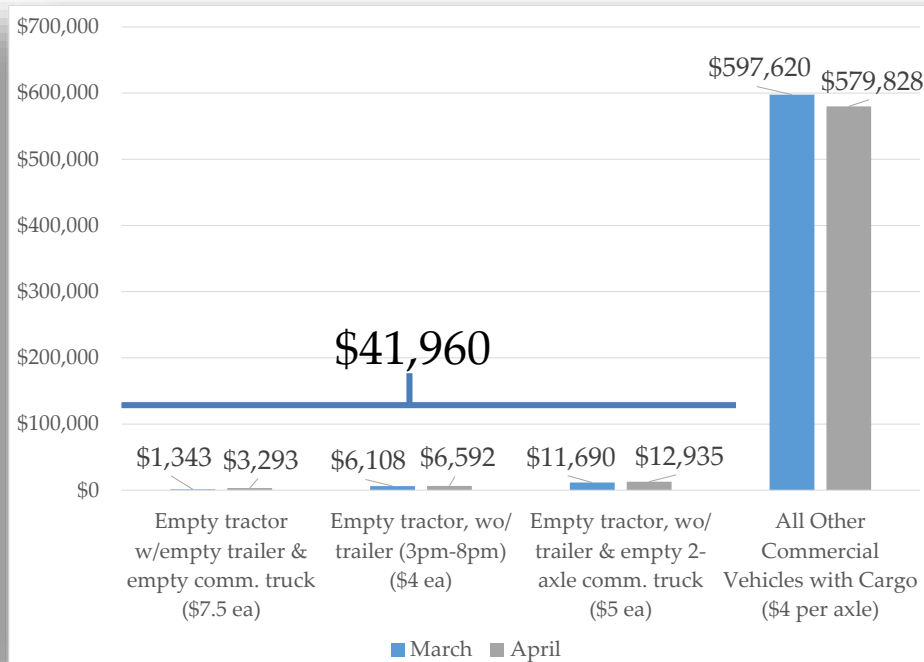


Reduced Tolls for Empty Commercial Trucks Southbound Traffic at Zaragoza POE

Traffic



Revenue





Reduced Tolls for Empty Commercial Trucks

Fee Schedule (Attachment A)

- The standard fee remains unchanged, a minimum fee is set.

<u>Detail</u>	<u>Fee</u>
Tolls Charge, Empty Tractor, without Trailer, 2 or 3 axles	Standard Fee: \$5.00; reduced fees may apply as set by the director with a Minimum Fee of \$3.00
Tolls Charge, Empty Tractor, without Trailer, 2 or 3 axles, Between 3:00 PM and 8:00 PM	Standard Fee: \$4.00; reduced fees may apply as set by the director with a Minimum Fee of \$2.00
Tolls Charge, Empty 2-axle Commercial Truck	Standard Fee: \$5.00; reduced fees may apply as set by the director with a Minimum Fee of \$3.00
Tolls Charge, Empty Tractor with Empty Trailer, 3 axles or more	Standard Fee: \$7.50; reduced fees may apply as set by the director with a Minimum Fee of \$4.00
Tolls Charge, Empty Commercial Truck, 3 axles or more	Standard Fee: \$7.50; reduced fees may apply as set by the director with a Minimum Fee of \$4.00



Proposed Schedule C Amendment

- Reduced Tolls for Empty Commercial Trucks (southbound traffic)

**Strategic Goal #1 – Create an Environment Conducive to
Strong, Sustainable Economic Development**