



## Recommendation/Public Input

- **Planning Division recommendation:** Approval
- **CPC Vote:** Approval Recommendation (6-0)
- **Public Input:** Planning did not receive any phone call or letters in support or opposition to the special permit request.

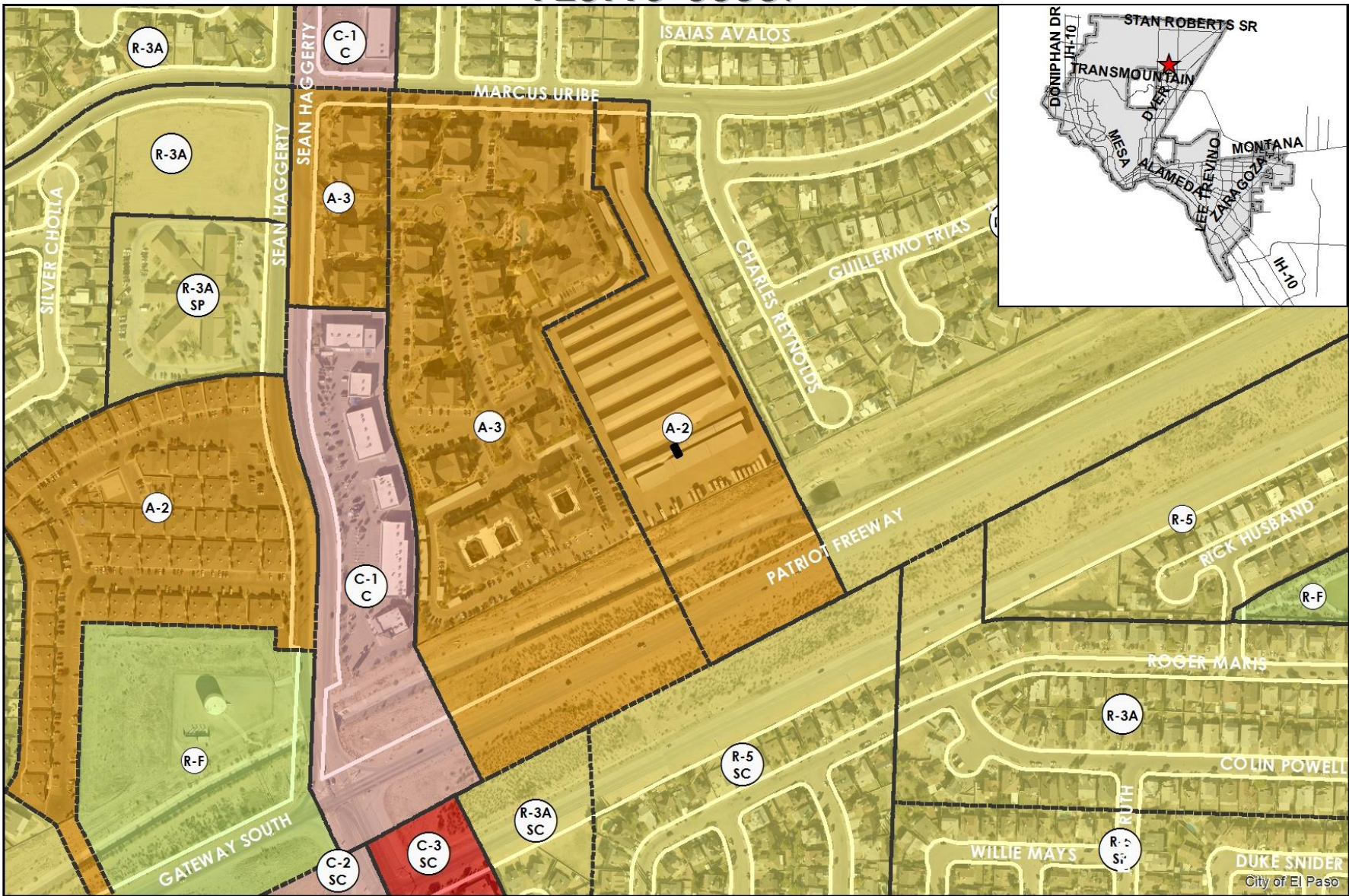
Strategic Goal #3 Promote the Visual Image of El Paso

3.1 Provide business friendly permitting and inspection processes

3.2 Improve the visual impression of the community



PZST16-00037



This map is designed for illustrative purposes only. The features depicted here are approximate and more site-specific studies may be required to draw accurate conclusions. Enlargements of this map to scales greater than its original can induce errors and may lead to misinterpretations of the data. The Planning & Inspections Department Planning Division makes no claim to its accuracy or completeness.



Subject Property

0 150 300 600 900 1,200 Feet







PZST16-00037



This map is designed for illustrative purposes only. The features depicted here are approximate and more site-specific studies may be required to draw accurate conclusions. Enlargements of this map to scales greater than its original can induce errors and may lead to misinterpretations of the data. The Planning & Inspections Department Planning Division makes no claim to its accuracy or completeness.



 Subject Property

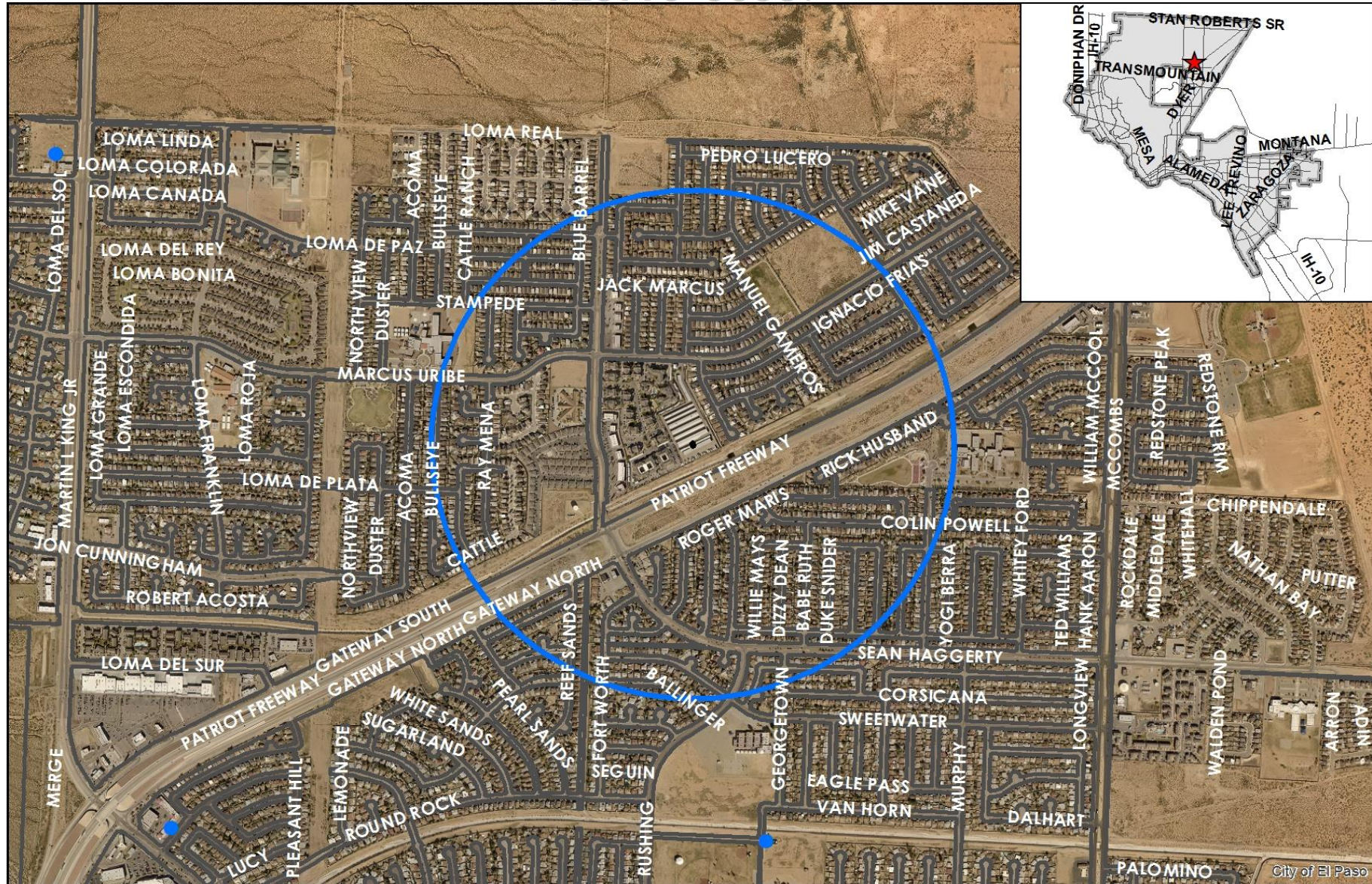
0 75 150 300 450 600 Feet







PZST16-00037



This map is designed for illustrative purposes only. The features depicted here are approximate and more site-specific studies may be required to draw accurate conclusions. Enlargements of this map to scales greater than its original can induce errors and may lead to misinterpretations of the data. The Planning & Inspections Department Planning Division makes no claim to its accuracy or completeness.

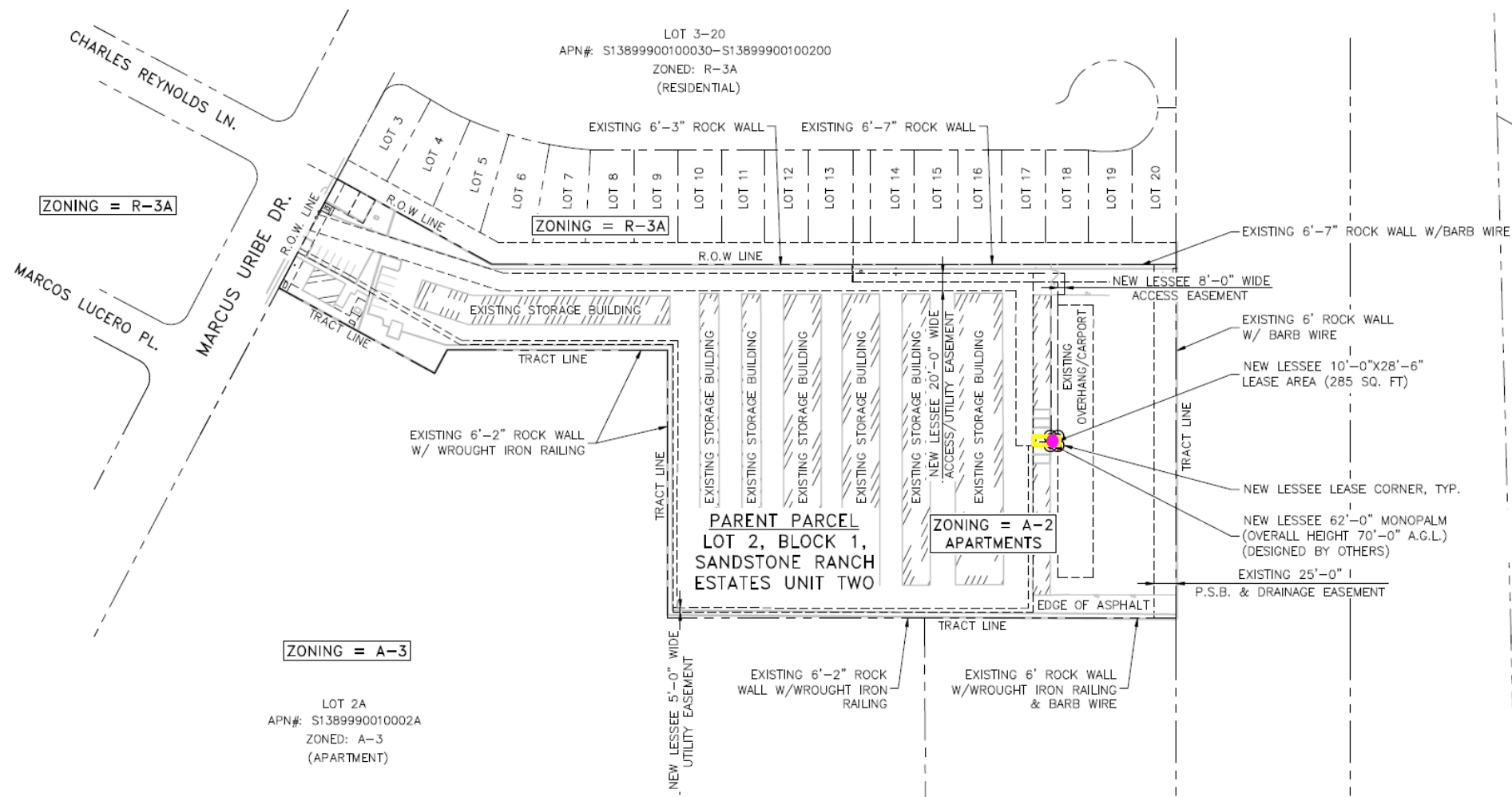


- Cell Towers
- 1/2 Mile Buffer
- Subject Property

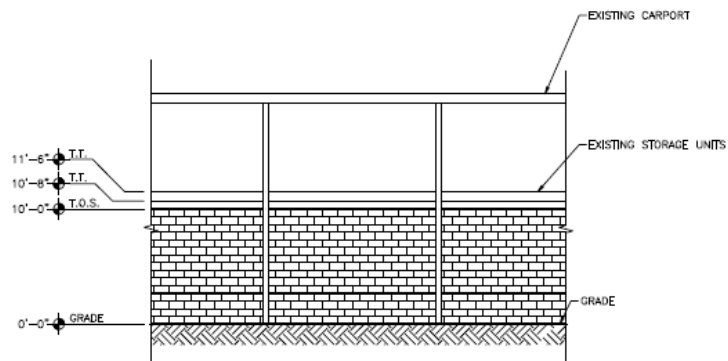
0 500 1,000 2,000 3,000 4,000 Feet



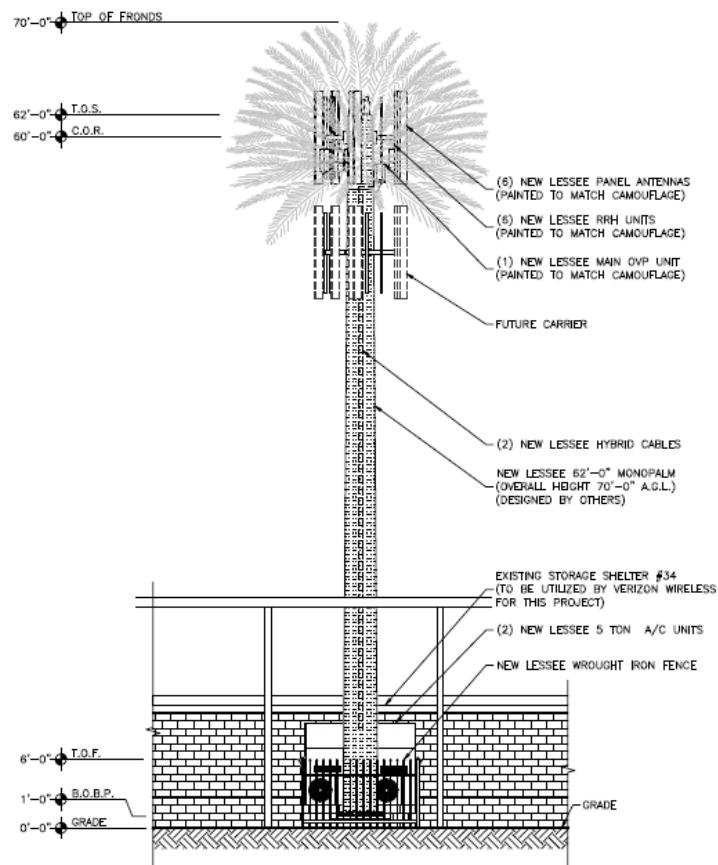




TOWER DESIGN CRITERIA:	
1.	TOWER MOUNTED EQUIPMENT (AND ANTENNAS) WILL BE PAINTED TO MATCH MONOPALM.
2.	TOWER SHALL BE DESIGNED WITH CAPACITY TO SUPPORT (1) ADDITIONAL CARRIER. (BY OTHERS)
3.	ANY ADDITIONAL ANTENNA SHALL BE SCREENED TO BLEND INTO THE EXISTING CAMOUFLAGING BY ADDING ITEMS SUCH AS, BUT NOT LIMITED TO, ADDITIONAL BRANCHES OR HUSKS.



EXISTING SOUTH ELEVATION  
SCALE: 1" = 10'-0"



NEW SOUTH ELEVATION  
SCALE: 1" = 10'-0"

KEY:	
C.O.R. =	CENTER OF RADIATION
A.L. =	ATTACHMENT LEVEL
B.T. =	BOTTOM TIP LEVEL
T.T. =	TOP TIP LEVEL
A.G.L. =	ABOVE GRADE LEVEL
B.O.B.P. =	BOTTOM OF BASE PLATE
T.O.S. =	TOP OF STRUCTURE
T.O.F. =	TOP OF FENCE

DESIGNED FOR:  
  
4821 EUBANK NE  
ALBUQUERQUE, NEW MEXICO 87111  
  
THESE DRAWINGS AND SURVEYS ARE COPYRIGHT PROTECTED AND THE SOLE PROPERTY OF JS INFRASTRUCTURE PARTNERS AND PRODUCED FOR THE USE OF OUR CLIENT. ANY REPRODUCTION OR USE OF THE INFORMATION CONTAINED WITHIN SAID DOCUMENTS IS PROHIBITED WITHOUT THE WRITTEN CONSENT OF JS INFRASTRUCTURE PARTNERS.

**JS INFRASTRUCTURE PARTNERS**  
AZ - CA - CO - ID - NM - NV - TX - UT

NO.	DESCRIPTION	DATE	BY	CHK
1	REVISED PER NEW UTILITY EASEMENT	05/03/18	EP	DDO
2	REVISED PER SAG COMMENTS	06/28/18	SC	DDO
3	REVISED PER SAG COMMENTS	07/28/18	DR	DDO
4	REVISED PER JURISDICTION COMMENTS	08/02/17	SAP	DDO
5	REVISED PER UPDATED SUR	05/07/18	SB	DDO

PROJECT NAME:  
**ELP BALLINGER**  
NEW 62'-0" MONOPALM  
(OVERALL HEIGHT: 70'-0" A.G.L.)  
RAW LAND COMMUNICATION SITE

PROJECT ADDRESS:  
5200 MARCUS URIBE DR.,  
EL PASO, TEXAS 79934  
EL PASO COUNTY

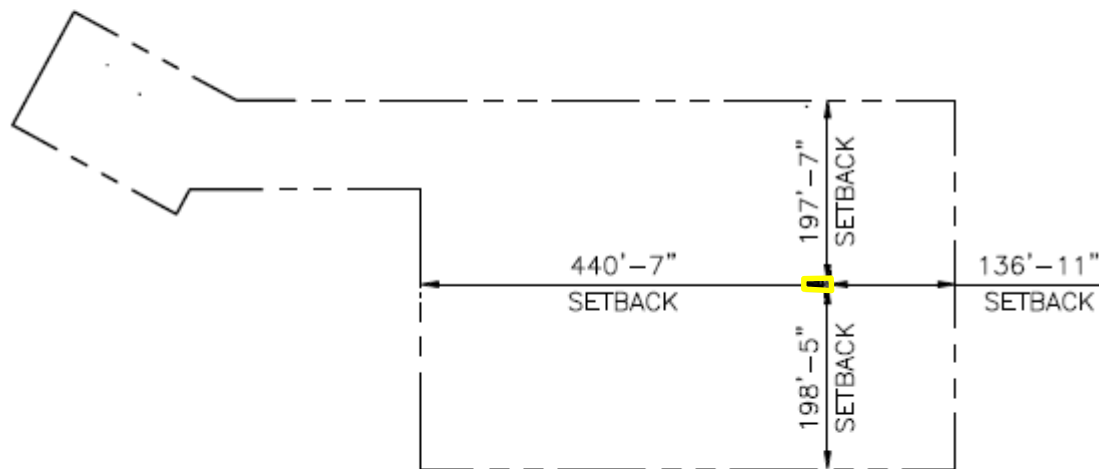
SHEET TITLE:  
**ELEVATIONS**

SAVE DATE:  
5/7/2018 12:40 PM

SHEET NUMBER:  
**C3**



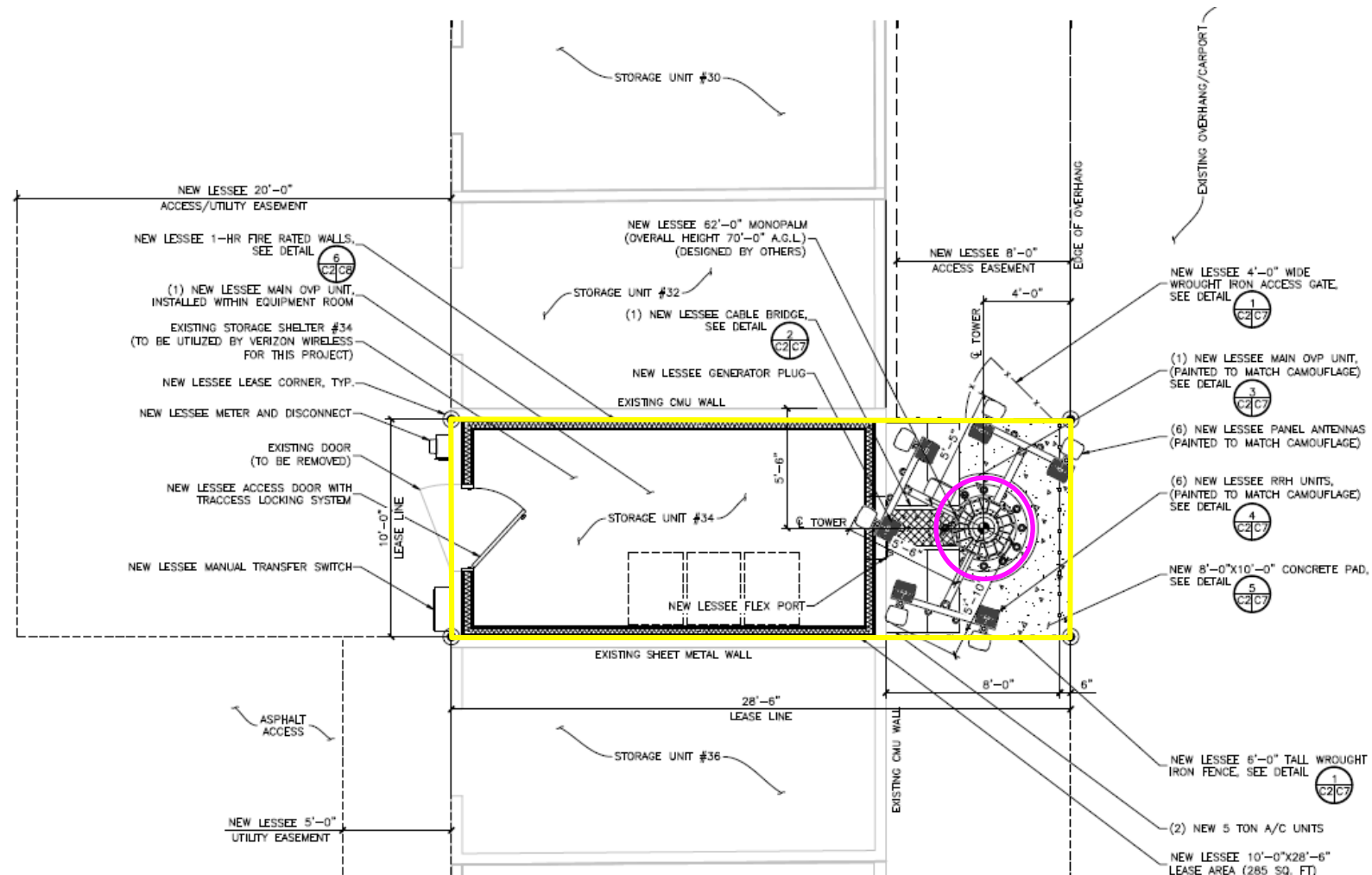
SETBACK TABLE:		
	TOWER BASE TO PARENT PROPERTY LINE	LEASE BOUNDARY TO PARENT PROPERTY LINE
NORTH	440'-7"	418'-7"
SOUTH	136'-11"	135'-5"
WEST	198'-5"	195'-11"
EAST	197'-7"	195'-1"



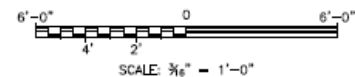
SETBACK SITE PLAN  
SCALE: 1"=300'-0"



NORTH



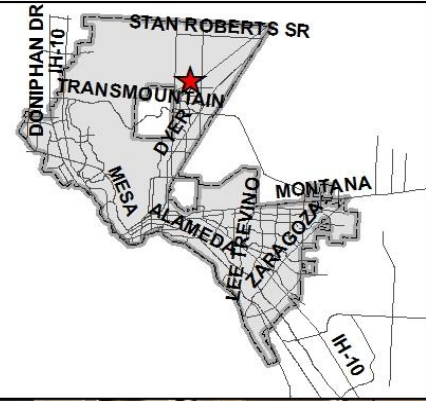
ENLARGED SITE PLAN







PZST16-00037



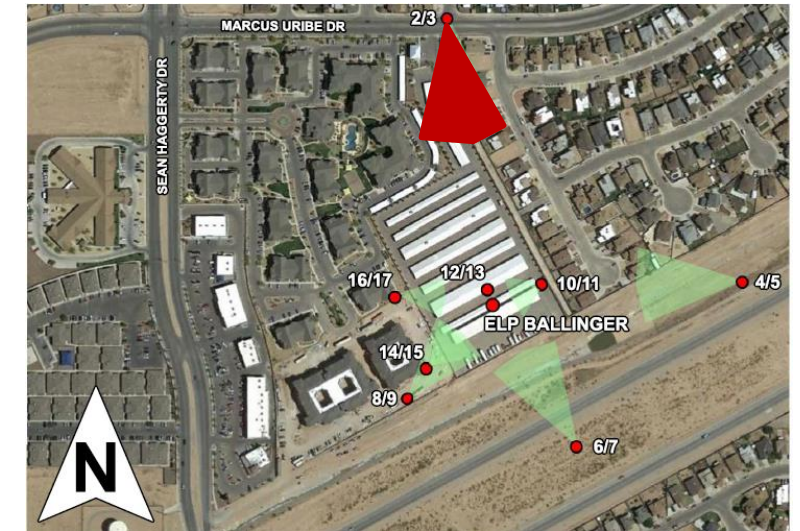
This map is designed for illustrative purposes only. The features depicted here are approximate and more site-specific studies may be required to draw accurate conclusions. Enlargements of this map to scales greater than its original can induce errors and may lead to misinterpretations of the data. The Planning & Inspections Department Planning Division makes no claim to its accuracy or completeness.



0 25 50 100 150 200 Feet





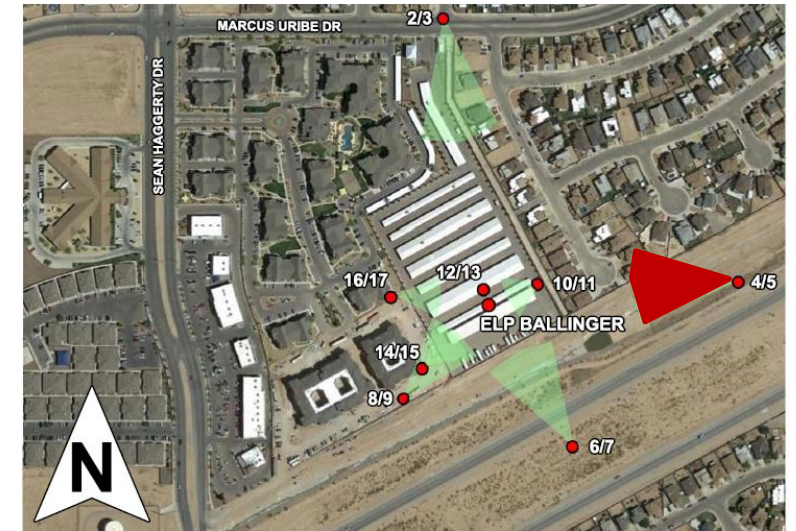


*"Delivering Outstanding Services"*



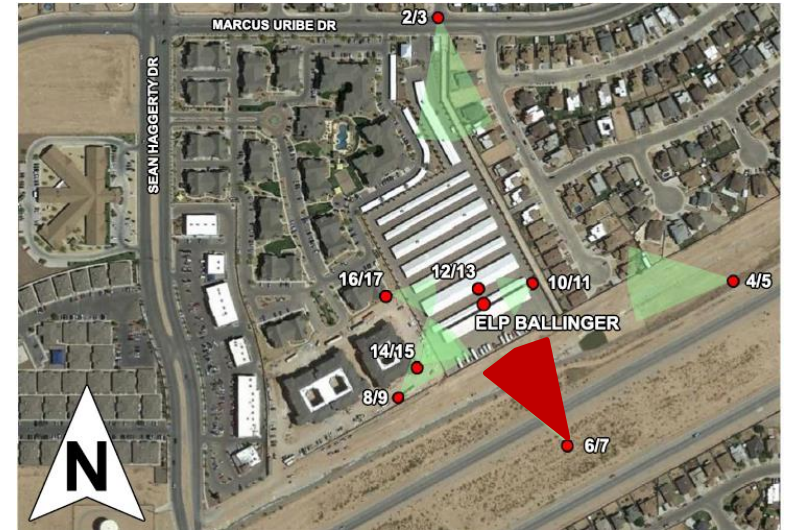


(6) NEW LESSEE PANEL ANTENNAS,  
ON NEW 64'-0" MONOPALM  
(DESIGNED BY OTHERS)



*"Delivering Outstanding Services"*











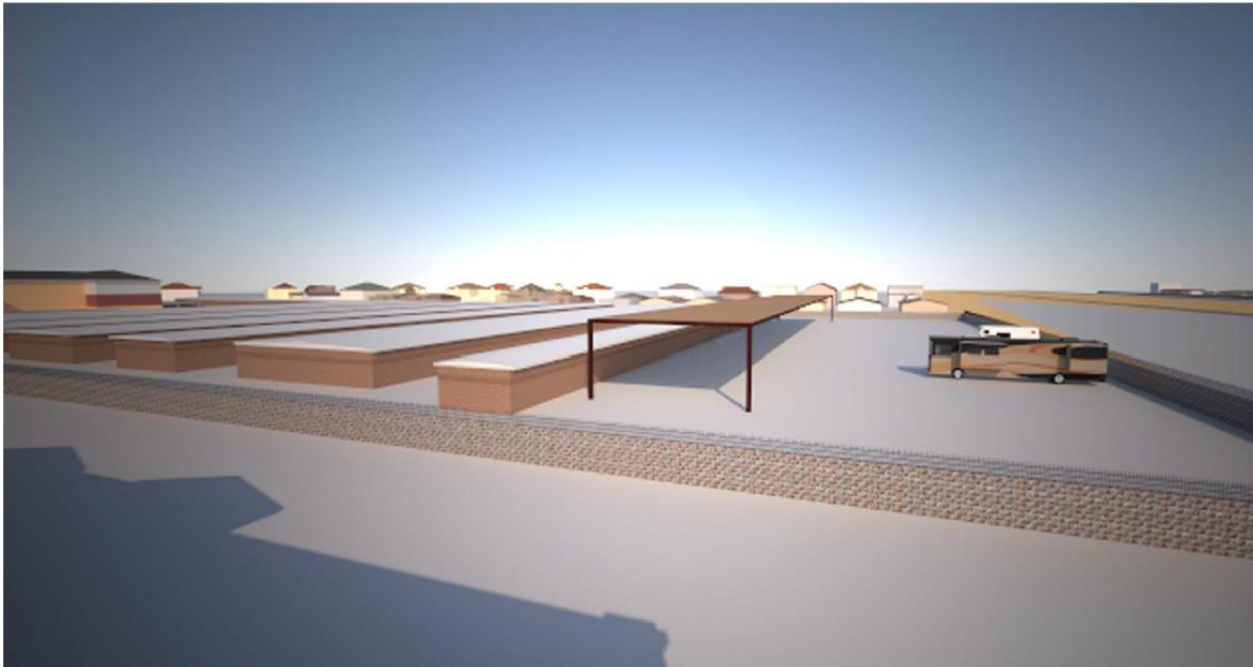


(6) NEW LESSEE PANEL ANTENNAS,  
ON NEW 64'-0" MONOPALM  
(DESIGNED BY OTHERS)



ling Services"



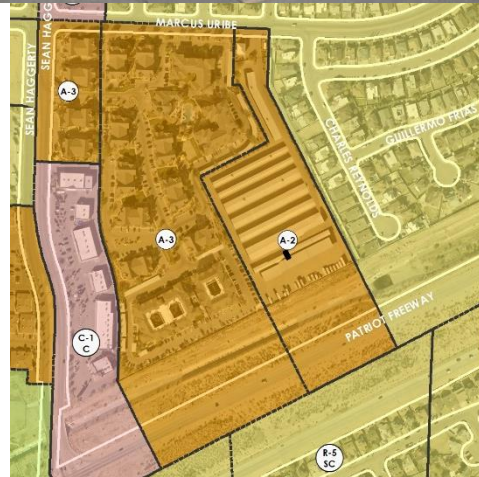






*"Delivering Outstanding Services"*

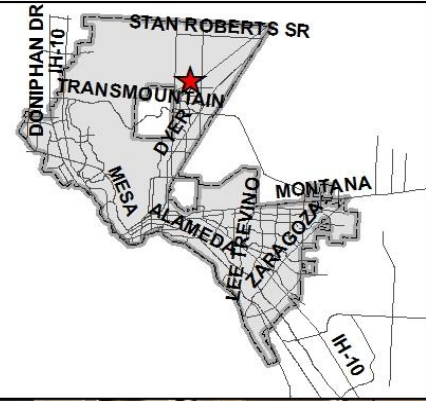








PZST16-00037



This map is designed for illustrative purposes only. The features depicted here are approximate and more site-specific studies may be required to draw accurate conclusions. Enlargements of this map to scales greater than its original can induce errors and may lead to misinterpretations of the data. The Planning & Inspections Department Planning Division makes no claim to its accuracy or completeness.



0 25 50 100 150 200 Feet

