

**CITY OF EL PASO, TEXAS  
AGENDA ITEM DEPARTMENT HEAD'S SUMMARY FORM**

**DEPARTMENT:** International Bridges Department  
**AGENDA DATE:** July 12, 2016  
**CONTACT PERSON/PHONE:** Mathew McElroy, (915) 533-7428,  
[McElroyMX@elpasotexas.gov](mailto:McElroyMX@elpasotexas.gov)  
**DISTRICT(S) AFFECTED:** All Districts

**SUBJECT:**

Discussion and action on a request received from U.S. Customs and Border Protection to fund additional overtime hours through the reimbursable services agreement authorized under Section 560 in an effort to reduce wait times at City owned ports of entry.

**BACKGROUND/DISCUSSION:**

City Council, on December 3, 2013, authorized the Section 560 "P3" reimbursable fee agreement and annex allowing the City to reimburse the U.S. Customs and Border Protection (CBP) for overtime provided by CBP officers to reduce wait times at the Paso Del Norte (Santa Fe) and Ysleta (Zaragoza) Bridges during peak times and holidays.

**PRIOR COUNCIL ACTION:**

December 3, 2013 – City Council approval of the Section 560 "P3" reimbursable fee agreement w/CBP  
September 23, 2014 – City Council approval of the first extension  
September 22, 2015 – City Council approval of the second extension

**AMOUNT AND SOURCE OF FUNDING:**

Current Annual Funding -----	\$1,440,804
Additional Requested Funding ---	\$ 794,926
Total Amount -----	\$2,235,730

Funding Source – Section 560 "P3" Reimbursable Fee Agreement  
(International Bridges Restricted – 520010-564-3360-64870)

\*\*\*\*\*REQUIRED AUTHORIZATION\*\*\*\*\*

<b>LEGAL:</b> (if required)	<b>FINANCE:</b> (if required)
<b>DEPARTMENT HEAD:</b>	Mathew S. McElroy International Bridges Department Director

---

**APPROVED FOR AGENDA:**

**CITY MANAGER:** \_\_\_\_\_ **DATE:** \_\_\_\_\_



THE CITY OF EL PASO  
**INTERNATIONAL  
BRIDGES**

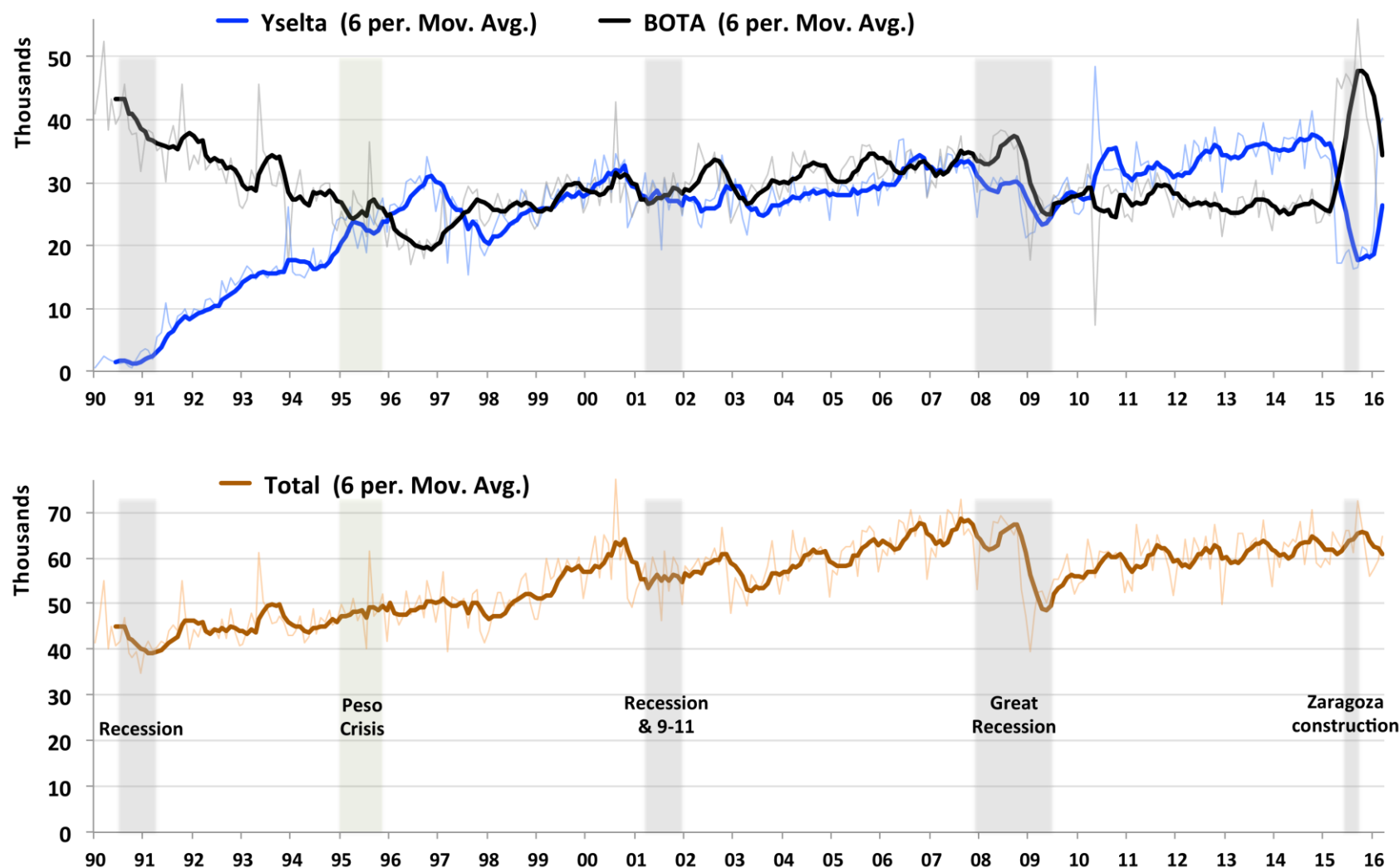
# **Additional Overtime Under the P3 program for U.S. Customs and Border Protection**

**Strategic Goal # 1-** Create an Environment Conducive to Strong,  
Sustainable Economic Development

*"Delivering Outstanding Services"*



# Northbound Cargo Crossings

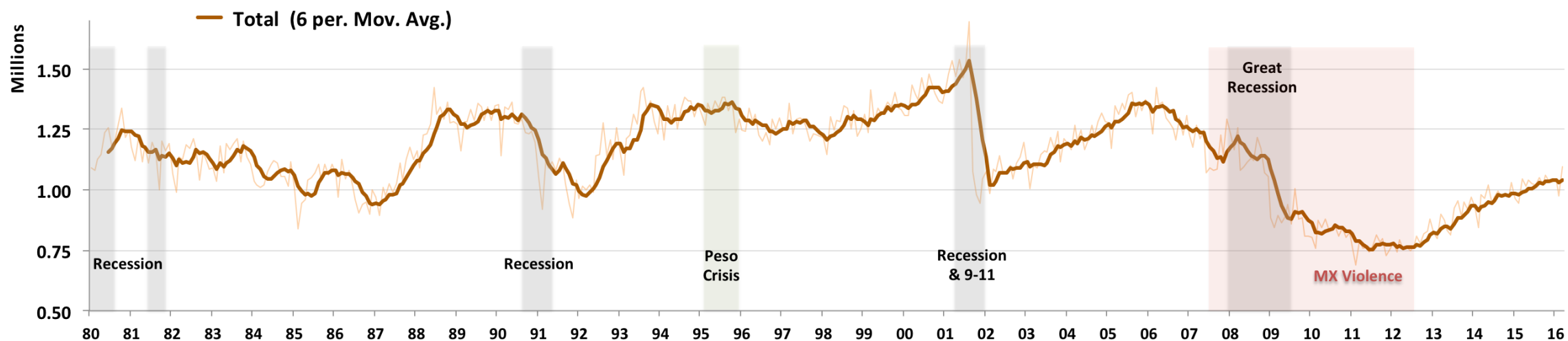
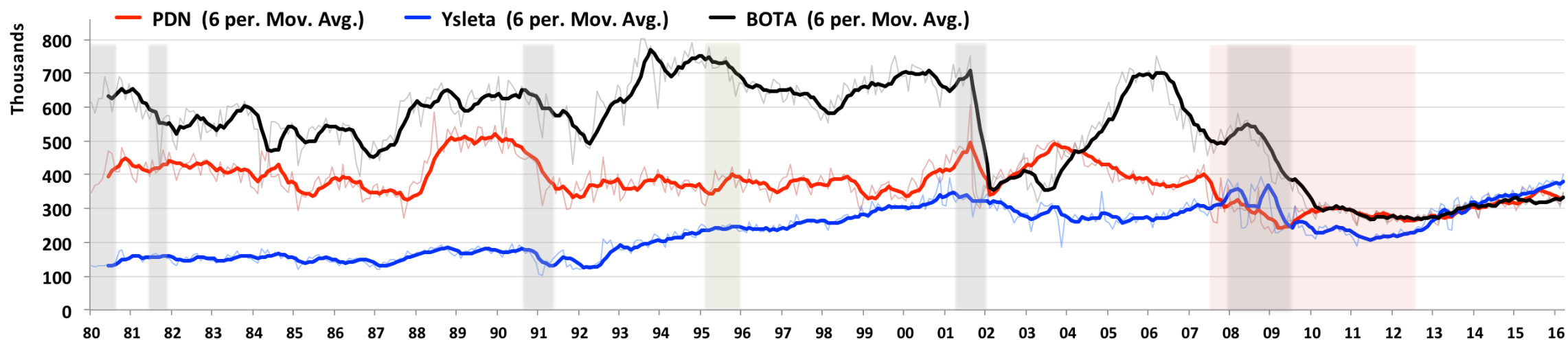


2005	2006	2007	2008	2009	2010	2011	2012	2013	2014	2015
740,654	774,641	782,369	758,856	632,678	707,860	717,117	724,660	739,639	751,427	758,074

Source: CBP



# Northbound Vehicle Crossings



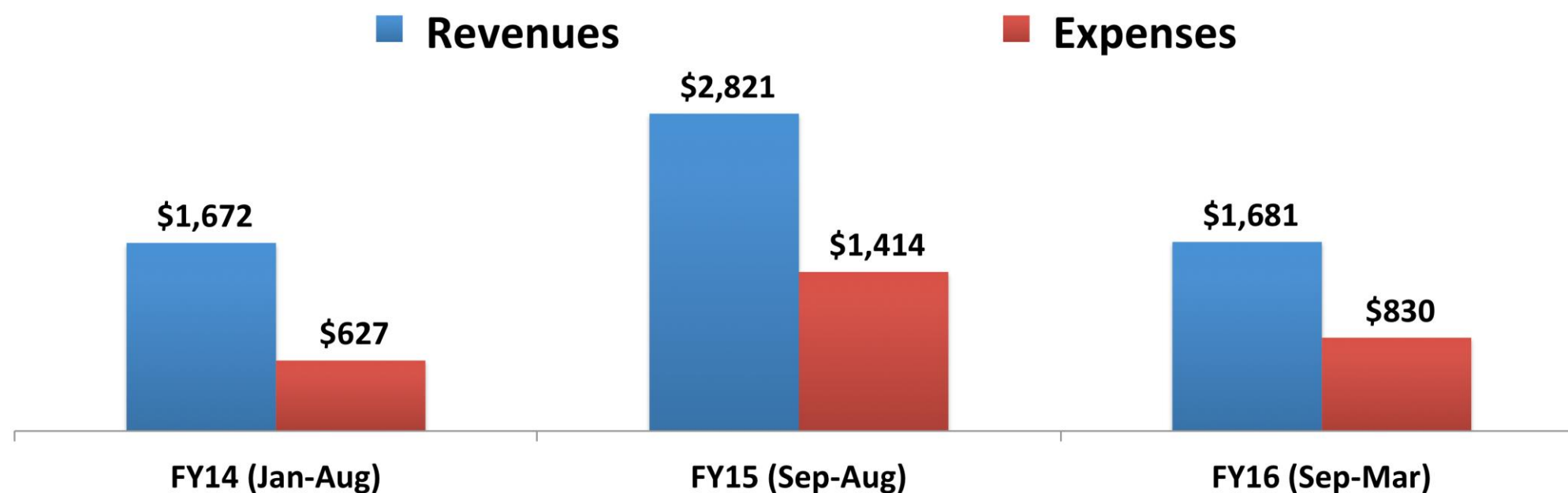
2005	2006	2007	2008	2009	2010	2011	2012	2013	2014	2015
15,957,591	15,566,602	14,119,141	13,716,434	10,551,698	9,967,932	9,148,377	9,463,281	10,644,719	11,595,373	12,258,192

Source: CBP



# P3 Revenues and Expenses

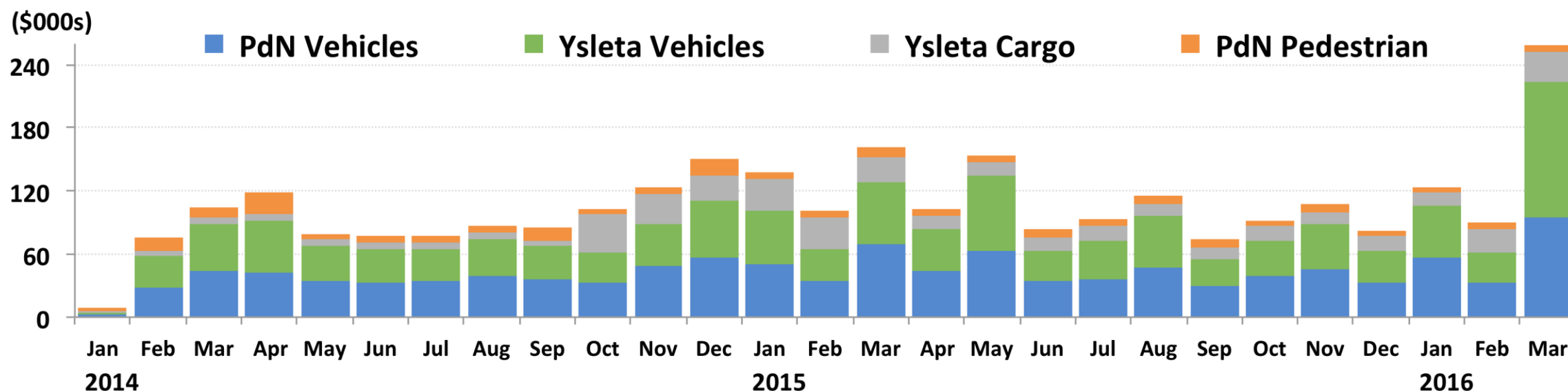
- City pays CBP overtime to staff all lanes during peak hours to help reduce wait times
- Paid for by an increase in tolls starting January 2014 – \$0.50 for autos and \$0.50 per axle for cargo vehicles





# P3 Bridge and Mode Coverage

## P3 Expenditures



### Ysleta Cargo

- Wednesday 12 – 2 pm
- Thursdays 4 – 10 pm
- Fridays 12 – 2 & 4 – 10 pm
- Saturdays 10 am – 2 pm

### Ysleta Vehicles

- Saturdays 2 – 6 pm
- Sundays 10 pm – 12 am

### PDN Vehicles

- Monday 5 – 6 am
- Saturdays 2 – 6 pm
- Sundays 10 pm – 12 am

### PDN Pedestrians

- Monday 10 am – 2 pm

### Holidays & special events



# Current P3 Weekly Coverage

- **Ysleta Cargo**

During Zaragoza construction

- Wednesdays, Thursdays & Fridays 10 am – 2 pm

New days/hours as of Feb. 2016

- Thursdays & Fridays 4 – 10 pm
- Saturdays 10 am – 2 pm

- **Ysleta POV**

- Saturdays 2 – 6 pm
- Sundays 10 pm – 12 am

- **PDN POV**

- Monday 5 – 6 am
- Saturdays 2 – 6 pm
- Sundays 10 pm – 12 am

- **PDN Pedestrians**

- Monday 10 am – 2 pm

- **Holiday and special events varies by POE**

Note: 2 CBP staff per lane, 1 for primary inspection and 1 for secondary inspection (sometimes must add immigration staff); coverage hours may change upon CBP recommendation and City approval





# Current Request

- POVs – Add 10pm to 2am at PDN and Zaragoza (48 hours per week), based on review of peak wait times by hour, Saturdays into Sunday.
- Increase cargo hours at Zaragoza by 32 hours per week (One lane, two officers, 8 and 4 hour assignments based on peaks).





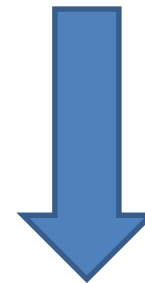
# Current Request Cost

	Current		Additional		TOTAL	
	Hours	Costs	Hours	Costs	Hours	Costs
<b>Paso del Norte</b>						
Pedestrian	832	\$ 99,366	-	-	832	\$ 99,366
Vehicles	4,160	\$ 496,829	2,496	\$ 298,097	6,656	\$ 794,926
Subtotal	4,992	\$ 596,195	2,496	\$ 298,097	7,488	\$ 894,292
<b>Ysleta-Zaragoza</b>						
Cargo	3,328	\$ 397,463	1,664	\$ 198,732	4,992	\$ 596,195
Vehicles	3,744	\$ 447,146	2,496	\$ 298,097	6,240	\$ 745,243
Subtotal	7,072	\$ 844,609	4,160	\$ 496,829	11,232	\$ 1,341,438
<b>TOTAL</b>	<b>12,064</b>	<b>\$ 1,440,804</b>	<b>6,656</b>	<b>\$ 794,926</b>	<b>18,720</b>	<b>\$ 2,235,730</b>



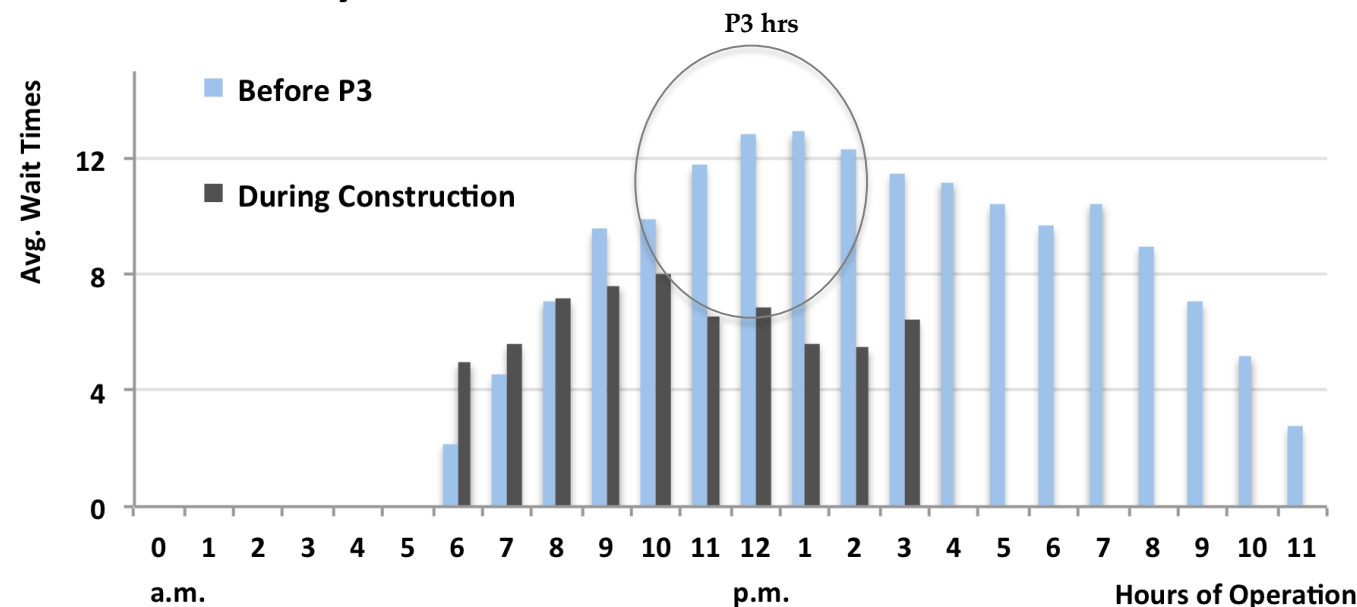
# Additional Hours Requested- Cargo

Day	Location	Event Name	Authorizing Official	Time Frame	# of Lanes	# of Officers	Ttl Event Hours
<b>Monday</b>	YSL Cargo			<b>1000-1400</b>	<b>1 Lane</b>	<b>2 Officers</b>	<b>8 Hours</b>
<b>Tuesday</b>	YSL Cargo			<b>1000-1400</b>	<b>1 Lane</b>	<b>2 Officers</b>	<b>8 Hours</b>
<b>Wednesday</b>	YSL Cargo			<b>1000-1200</b>	<b>1 Lane</b>	<b>2 Officers</b>	<b>4 Hours</b>
Wednesday	YSL Cargo	ANNEX(reinstated)	Mathew McElroy	1200-1400	1 Lane	2 Officers	4 Hours
<b>Thursday</b>	YSL Cargo			<b>1000-1400</b>	<b>1 Lane</b>	<b>2 Officers</b>	<b>8 Hours</b>
Thursday	YSL Cargo	ELP-FY-16-008	Kurt Fenstermacher	1600-2200	2 Lane	4 Officers	24 Hours
<b>Friday</b>	YSL Cargo			<b>1000-1200</b>	<b>1 Lane</b>	<b>2 Officers</b>	<b>4 Hours</b>



Hours requested correspond to peak times

## Ysleta Thursdays





# Cargo Data – Wait Times

COV	Tuesday, March 1, 2016	0	0	0	0	0	0	2	5	5	30	30	30	25	18	30	15	14	10	10	5	5	5	5	5	0	
	Wednesday, March 2, 2016	0	0	0	0	0	0	2	5	10	30	30	30	30	30	30	25	30	10	8	6	5	5	5	5	0	
	Thursday, March 3, 2016	0	0	0	0	0	0	4	15	25	30	25	25	25	25	25	20	20	15	12	12	11	11	10	5	0	
	Friday, March 4, 2016	0	0	0	0	0	0	4	4	4	7	15	18	16	16	16	16	16	10	10	9	7	7	3	3	0	
	Saturday, March 5, 2016	0	0	0	0	0	0	0	0	2	15	25	10	10	10	5	5	0	0	0	0	0	0	0	0	0	
	Sunday, March 6, 2016	0	0	0	0	0	0	0	0	0	0	0	0	0	0	0	0	0	0	0	0	0	0	0	0	0	
	Monday, March 7, 2016	0	0	0	0	0	0	2	2	5	5	5	5	5	5	5	5	5	5	30	30	25	22	20	10	0	
	Tuesday, March 8, 2016	0	0	0	0	0	0	1	1	15	25	35	40	40	40	40	40	25	25	35	30	25	12	12	3	0	
	Wednesday, March 9, 2016	0	0	0	0	0	0	2	0	2	35	35	35	35	35	35	35	15	15	22	0	30	35	30	20	0	
	Thursday, March 10, 2016	0	0	0	0	0	0	5	10	10	10	10	10	10	10	10	10	10	10	10	8	5	5	5	5	0	
	Friday, March 11, 2016	0	0	0	0	0	0	0	0	7	7	7	7	7	7	7	25	15	15	10	10	7	10	7	10	5	
	Saturday, March 12, 2016	0	0	0	0	0	0	0	0	5	5	12	8	5	8	5	8	0	0	0	0	0	0	0	0	0	
	Sunday, March 13, 2016	0	0	0	0	0	0	0	0	0	0	0	0	0	0	0	0	0	0	0	0	0	0	0	0	0	
	Monday, March 14, 2016	0	0	0	0	0	0	10	0	1	1	1	20	20	20	20	20	20	20	25	20	30	30	30	25	25	0
	Tuesday, March 15, 2016	0	0	0	0	0	0	1	5	5	5	5	50	50	50	50	50	50	55	40	38	10	25	36	10	0	
	Wednesday, March 16, 2016	0	0	0	0	0	0	1	5	20	35	35	45	45	45	45	45	45	35	35	30	30	25	30	20	2	
	Thursday, March 17, 2016	0	0	0	0	0	0	5	15	10	40	45	45	45	40	40	35	35	35	25	7	5	5	5	5	0	
	Friday, March 18, 2016	0	0	0	0	0	0	10	10	10	10	45	45	45	45	45	45	45	40	40	3	3	3	3	3	0	
	Saturday, March 19, 2016	0	0	0	0	0	0	0	0	5	5	8	8	10	10	40	15	0	0	0	0	0	0	0	0	0	
	Sunday, March 20, 2016	0	0	0	0	0	0	0	0	0	0	0	0	0	0	0	0	0	0	0	0	0	0	0	0	0	
	Monday, March 21, 2016	0	0	0	0	0	0	15	15	15	30	30	35	35	30	32	1	0	0	0	0	0	0	0	0	0	
	Tuesday, March 22, 2016	0	0	0	0	0	0	5	5	35	30	40	40	35	35	35	15	25	35	30	30	30	30	20	10	0	
	Wednesday, March 23, 2016	0	0	0	0	0	0	10	10	10	35	40	40	40	40	40	0	40	35	30	30	35	15	7	5	0	
	Thursday, March 24, 2016	5	0	0	0	0	0	0	0	20	45	45	25	35	25	25	5	0	0	0	0	0	0	0	0	0	
	Friday, March 25, 2016	0	0	0	0	0	0	0	0	0	0	0	0	0	0	0	0	0	0	0	0	0	0	0	0	0	
	Saturday, March 26, 2016	0	0	0	0	0	0	0	2	2	8	8	45	45	45	38	8	0	0	0	0	0	0	0	0	0	
	Sunday, March 27, 2016	0	0	0	0	0	0	0	0	0	0	0	0	0	0	0	0	0	0	0	0	0	0	0	0	0	
	Monday, March 28, 2016	0	0	0	0	0	0	10	10	10	10	12	35	40	40	40	35	7	15	10	10	10	10	10	10	0	
	Tuesday, March 29, 2016	0	0	0	0	0	0	10	10	10	35	40	40	40	40	40	35	7	7	20	20	12	12	10	10	0	
	Wednesday, March 30, 2016	0	0	0	0	0	0	5	15	15	40	45	40	40	40	40	5	5	10	35	25	20	25	5	5	0	
	Thursday, March 31, 2016	0	0	0	0	0	0	5	5	5	40	40	45	45	45	40	35	35	35	30	10	10	10	10	20	0	
Over 30 Minutes								16 to 30 Minutes				15 Minutes and under				Not Reported											
ELP560 Annex								ELP560 Recommended																			
Details Report with current Standard 560 and Proposed 560 Events																											
3/1/2016 To 4/6/2016																											
COV	Friday, April 1, 2016	0	0	0	0	0	0	5	0	5	7	30	35	35	55	70	70	70	120	120	20	15	15	15	5	0	
	Saturday, April 2, 2016	0	0	0	0	0	0	0	0	5	5	20	33	15	6	6	6	0	0	0	0	0	0	0	0	0	
	Sunday, April 3, 2016	0	0	0	0	0	0	0	0	0	0	0	0	0	0	0	0	0	0	0	0	0	0	0	0		
	Monday, April 4, 2016	0	0	0	0	0	0	5	10	10	7	6	35	35	25	30	7	7	28	28	15	15	15	15	10	0	
	Tuesday, April 5, 2016	0	0	0	0	0	0	5	5	15	35	35	40	40	40	35	30	45	30	30	40	20	7	15	10	0	
Wednesday, April 6, 2016	0	0	0	0	0	0	3	3	20	20	35	35	40	40	40	40	15	15	15	20	20	20	NR	NR	0		
Over 30 Minutes								16 to 30 Minutes				15 Minutes and under				Not Reported											
ELP560 Annex								ELP560 Recommended																			

Unacceptable  
wait times  
outside of  
program hours

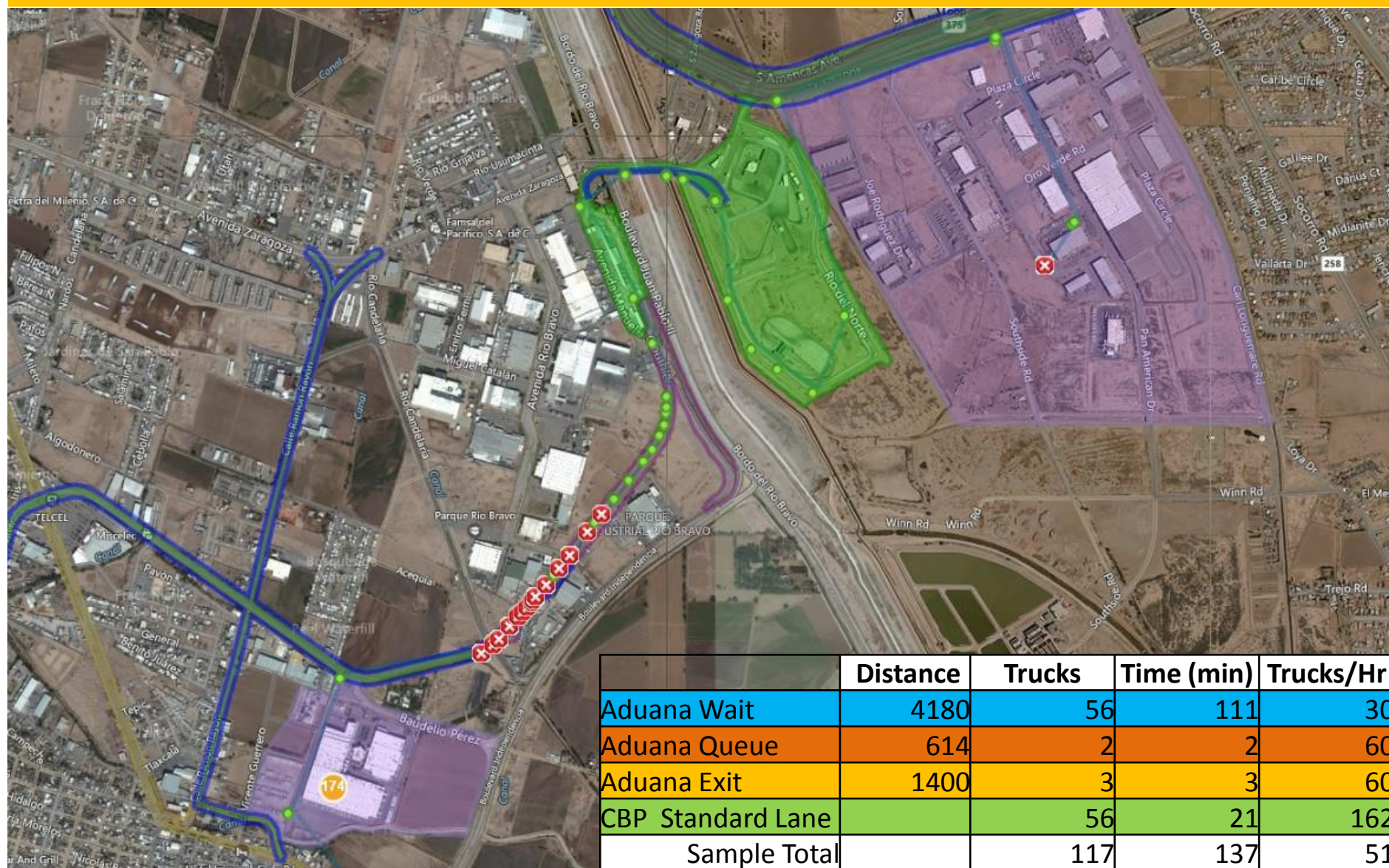




# Impacts of Additional Lane Staffing - Cargo

- Opening an additional lane during peak times can facilitate the flow of an estimated **162 trucks per hour** (Secure Origins).
- The estimated 15 percent savings from P3 cargo would reduce sample trips such as these by 20.55 minutes

## Zaragoza/Ysleta Standard Lanes: Oct 13, 2015







# Zaragoza POV Data – Wait Times

Port/Crossing	am	12	1	2	3	4	5	6	7	8	9	10	11	12	13	14	15	16	17	18	19	20	21	22	23
El Paso/Ysleta																									
POV	Saturday, April 30, 2016	33	35	35	35	35	35	25	35	35	35	38	38	39	50	60	35	40	50	35	35	35	45	48	50
	Sunday, May 1, 2016	90	90	85	90	90	25	25	3	5	5	20	20	30	30	40	45	45	46	70	72	85	81	49	52
	Monday, May 2, 2016	20	20	25	8	38	38	40	40	40	40	40	30	35	35	40	40	40	40	40	40	40	40	40	40
	Tuesday, May 3, 2016	55	45	35	2	3	17	28	40	40	40	35	35	42	42	52	60	60	60	55	50	45	40	40	50
	Wednesday, May 4, 2016	40	5	5	5	5	30	40	40	40	25	18	25	43	45	45	45	45	42	40	40	20	20	25	40
	Thursday, May 5, 2016	45	45	10	5	5	20	20	25	30	28	35	33	45	32	32	37	40	25	5	8	5	5	8	20
	Friday, May 6, 2016	8	1	0	0	10	25	32	30	28	15	15	15	29	28	35	10	20	35	47	45	45	46	48	30
	Saturday, May 7, 2016	30	30	15	10	5	5	5	5	5	60	35	45	60	60	60	30	20	20	33	40	60	50	45	50
	Sunday, May 8, 2016	50	75	75	65	60	35	8	8	30	25	36	41	43	44	45	48	49	30	40	45	45	45	55	55
	Monday, May 9, 2016	55	50	28	28	35	40	40	20	20	6	8	7	10	30	30	60	27	10	15	45	46	45	45	58
	Tuesday, May 10, 2016	58	62	10	3	5	15	25	23	20	22	30	15	15	17	45	40	40	35	15	15	15	15	30	45
	Wednesday, May 11, 2016	40	45	45	45	35	40	40	45	45	18	18	25	23	32	40	55	55	55	55	55	55	55	55	55
	Thursday, May 12, 2016	55	60	60	3	3	10	30	30	30	30	30	45	45	45	45	47	47	90	90	90	45	12	15	35
	Friday, May 13, 2016	44	40	40	15	0	30	35	35	20	15	15	15	15	15	15	45	45	47	51	51	45	25	30	25
	Saturday, May 14, 2016	20	15	5	2	2	15	18	30	38	43	43	18	13	13	13	8	NR	8	15	30	45	55	60	75
	Sunday, May 15, 2016	75	75	75	75	75	75	75	75	75	35	30	30	35	40	40	25	25	15	15	35	35	48	48	50
	Monday, May 16, 2016	45	40	15	25	40	45	25	25	25	15	13	16	18	23	28	35	35	45	55	63	65	120	120	120
	Tuesday, May 17, 2016	90	25	1	1	1	35	30	30	35	25	15	10	12	12	25	32	32	32	90	90	45	40	5	27
	Wednesday, May 18, 2016	30	15	3	3	5	30	25	25	35	30	30	20	20	20	20	40	40	45	45	50	40	20	20	60
	Thursday, May 19, 2016	60	25	1	1	1	30	35	20	15	17	22	25	28	16	20	38	38	45	50	40	45	25	25	40
	Friday, May 20, 2016	60	1	3	3	3	30	30	35	35	20	15	20	35	35	20	25	40	40	45	46	45	40	50	45
	Saturday, May 21, 2016	45	20	2	8	2	10	15	25	38	60	25	40	25	20	20	15	15	15	15	15	15	15	20	40
	Sunday, May 22, 2016	40	45	82	51	30	2	2	8	30	35	38	25	25	20	15	10	10	40	20	20	45	45	40	37
	Monday, May 23, 2016	45	45	5	5	5	112	45	20	20	3	3	5	8	8	45	60	60	60	58	58	60	40	20	40

Unacceptable wait times outside of program hours

-  
Add hours  
10pm to 2am  
Saturday into  
Sunday



# BOTA – Not Eligible Under Council Policy

Port/Crossing		am	12	1	2	3	4	5	6	7	8	9	10	11	12	13	14	15	16	17	18	19	20	21	22	23	
El Paso/Bridge of the Americas (BOTA)																											
POV	Saturday, April 30, 2016	10	25	55	50	50	50	48	45	40	45	50	50	60	45	40	50	50	55	55	55	55	55	45	45	45	
	Sunday, May 1, 2016	45	45	90	90	90	15	8	10	35	25	40	30	45	50	60	60	60	45	60	60	60	50	70	90	90	
	Monday, May 2, 2016	100	1	2	30	32	36	36	40	40	55	55	55	50	50	50	60	60	75	65	55	70	60	60	100	100	
	Tuesday, May 3, 2016	100	90	10	5	5	20	20	25	25	25	25	50	50	55	55	55	55	55	55	90	90	50	50	90	90	
	Wednesday, May 4, 2016	90	85	5	5	5	15	35	45	35	30	35	35	40	60	65	60	60	65	55	45	35	40	40	40	45	
	Thursday, May 5, 2016	40	50	16	5	5	20	35	39	39	39	45	40	45	60	90	80	90	28	15	20	25	30	40	40	40	
	Friday, May 6, 2016	43	40	5	5	5	25	25	25	40	45	34	52	67	56	60	60	67	70	65	72	61	39	47	50	50	
	Saturday, May 7, 2016	5	10	5	5	5	5	10	10	15	45	45	55	35	25	20	45	40	90	100	90	60	40	40	45	45	
	Sunday, May 8, 2016	50	52	80	90	95	96	90	25	25	30	40	45	50	60	55	80	60	45	35	60	48	80	90	100	100	
	Monday, May 9, 2016	85	5	5	20	20	30	35	40	40	40	15	45	50	50	50	60	60	70	60	60	45	60	45	45	45	
	Tuesday, May 10, 2016	50	110	1	1	10	30	50	50	40	15	5	15	35	75	60	90	80	80	30	15	15	30	30	30	30	
	Wednesday, May 11, 2016	45	110	110	110	110	110	45	45	45	40	60	60	60	60	60	90	90	85	85	65	70	85	85	85	85	
	Thursday, May 12, 2016	85	90	90	3	3	25	25	25	40	36	36	56	56	80	110	105	120	90	90	70	70	80	60	60	60	
	Friday, May 13, 2016	70	90	10	10	15	30	35	40	40	25	25	33	50	45	42	42	60	70	70	65	50	40	30	30	30	
	Saturday, May 14, 2016	25	40	5	5	5	5	10	20	30	35	45	50	50	45	40	50	NR	65	90	90	88	85	85	80	80	
	Sunday, May 15, 2016	80	80	80	102	98	96	96	106	24	25	30	35	40	45	45	45	45	5	5	35	45	55	50	50	50	
	Monday, May 16, 2016	50	50	60	20	25	30	30	30	30	30	60	45	55	60	65	65	65	65	65	65	65	65	65	90	90	
	Tuesday, May 17, 2016	100	100	25	5	5	20	35	40	30	30	60	40	40	45	45	60	60	90	90	80	60	65	65	60	60	
	Wednesday, May 18, 2016	60	15	15	5	5	25	40	45	60	40	40	15	15	25	35	45	50	60	70	80	90	90	90	50	50	
	Thursday, May 19, 2016	60	1	1	1	25	25	32	32	34	36	34	24	12	8	25	37	48	45	50	55	45	45	45	45	45	
	Friday, May 20, 2016	55	10	8	8	13	18	30	25	25	25	30	20	20	30	35	50	50	46	55	52	52	55	55	55	55	
	Saturday, May 21, 2016	15	10	10	15	5	10	15	60	30	60	70	55	50	50	50	40	46	45	50	55	45	45	45	45	45	
	Sunday, May 22, 2016	60	100	45	60	60	60	15	25	35	10	15	30	45	45	45	60	60	30	35	40	50	60	55	55	55	
	Monday, May 23, 2016	35	5	5	5	35	30	35	35	40	32	12	10	16	23	28	46	38	55	59	59	59	90	90	90	90	
Ready (PV)	Saturday, April 30, 2016	5	20	49	45	45	45	45	40	35	40	45	45	55	35	35	45	45	50	50	50	50	40	40	40	40	
	Sunday, May 1, 2016	40	40	75	75	75	10	5	8	30	20	35	25	40	45	55	60	50	30	60	45	60	45	60	70		
	Monday, May 2, 2016	90	1	1	27	27	30	30	35	35	50	50	50	45	45	45	50	50	65	55	45	60	50	50	90		
	Tuesday, May 3, 2016	90	80	5	3	3	15	15	20	20	20	20	30	40	45	45	45	45	45	45	75	75	40	40	80		
	Wednesday, May 4, 2016	80	80	2	2	2	10	25	35	25	25	30	30	35	55	60	55	55	60	50	40	30	35	35	35		
	Thursday, May 5, 2016	35	48	14	3	3	18	33	37	37	37	40	37	39	80	80	75	85	25	10	18	22	22	37	37		
	Friday, May 6, 2016	40	35	3	3	3	20	20	20	30	30	25	35	45	46	50	50	57	60	55	62	51	30	40	3		
	Saturday, May 7, 2016	3	5	3	3	3	3	8	8	12	40	40	48	30	20	15	35	35	80	90	80	50	30	30	35		
	Sunday, May 8, 2016	35	47	75	84	90	91	85	20	20	25	35	40	45	5	50	75	55	30	30	45	40	60	75	85		
	Monday, May 9, 2016	60	5	5	16	15	26	30	30	30	30	10	35	45	45	45	60	60	60	40	45	30	40	30	30		
	Tuesday, May 10, 2016	40	100	1	1	5	25	40	40	35	5	5	10	25	50	45	90	60	60	25	10	10	20	20	20		
	Wednesday, May 11, 2016	35	100	100	100	100	100	40	40	40	35	55	55	55	55	55	75	75	75	75	50	60	70	70	70		
	Thursday, May 12, 2016	70	75	75	1	1	20	20	20	35	30	30	50	50	72	100	95	110	80	80	60	60	70	50	50		
	Friday, May 13, 2016	60	80	5	5	10	20	30	35	35	20	20	28	46	43	38	38	55	65	65	60	45	35	25	25		
	Saturday, May 14, 2016	20	35	2	2	2	2	5	15	25	30	40	45	45	40	35	45	NR	58	85	85	82	80	80	78		
	Sunday, May 15, 2016	78	78	78	98	94	92	92	102	20	20	25	30	35	40	40	40	40	3	3	30	40	45	40	40	40	
	Monday, May 16, 2016	40	45	54	15	20	25	25	25	25	25	50	40	48	50	55	60	55	60	60	60	60	60	60	90	90	
	Tuesday, May 17, 2016	100	100	25	2	2	15	30	35	25	25	25	60	30	40	40	55	55	80	80	75	55	60	60	55	55	
	Wednesday, May 18, 2016	55	15	15	5	5	20	30	35	55	35	35	10	10	20	30	40	45	55	65	75	85	85	85	45	45	
	Thursday, May 19, 2016	45	1	1	1	21	21	25	30	32	25	24	15	8	4	15	27	35	35	45	50	35	35	35	40	40	
	Friday, May 20, 2016	50	2	5	5	10	14	20	15	15	20	20	15	15	20	25	45	45	40	50	40	40	40	40	40	40	
	Saturday, May 21, 2016	10	7	2	15	2	5	10	45	25	45	55	45	45	45	45	30	35	35	40	50	40	40	40	40	35	
	Sunday, May 22, 2016	55	100	40	55	55	55	13	20	30	8	12	25	40	40	40	50	50	25	30	35	45	50	50	50	50	
	Monday, May 23, 2016	30	2	2	2	30	25	30	30	35	25	8	7	10	15	18	26	25	50	55	55	55	75	75	75	75	

Constant unacceptable wait times





# Impacts of Additional Lane Staffing - POV

- Preliminary models suggest:
  - 14 percent savings from additional staffing during peak P3 hours
  - Reduces wait 12.6 minutes for a 90 minute queue
  - 8.4 minutes for a 60 minute queue.
- Models again suggest that all the POV bridges serve as substitutes (operate as a system).

## Bridge Queues at Peak Times

