



Playa Drain Shared Use Path

August 06, 2019



*Strategic Plan Goal:
7) Enhance and Sustain El Paso's Infrastructure Network*

Program

Transportation Alternatives Set-Aside (TASA) program provides funding for projects and activities defined as **transportation alternatives** including:

- On- and off-road **pedestrian and bicycle facilities**
- Infrastructure projects for improving non-driver access to **public transportation** and enhanced mobility
- Community improvement activities
- Environmental mitigation, trails that serve a transportation purpose, and **safe routes to school projects**

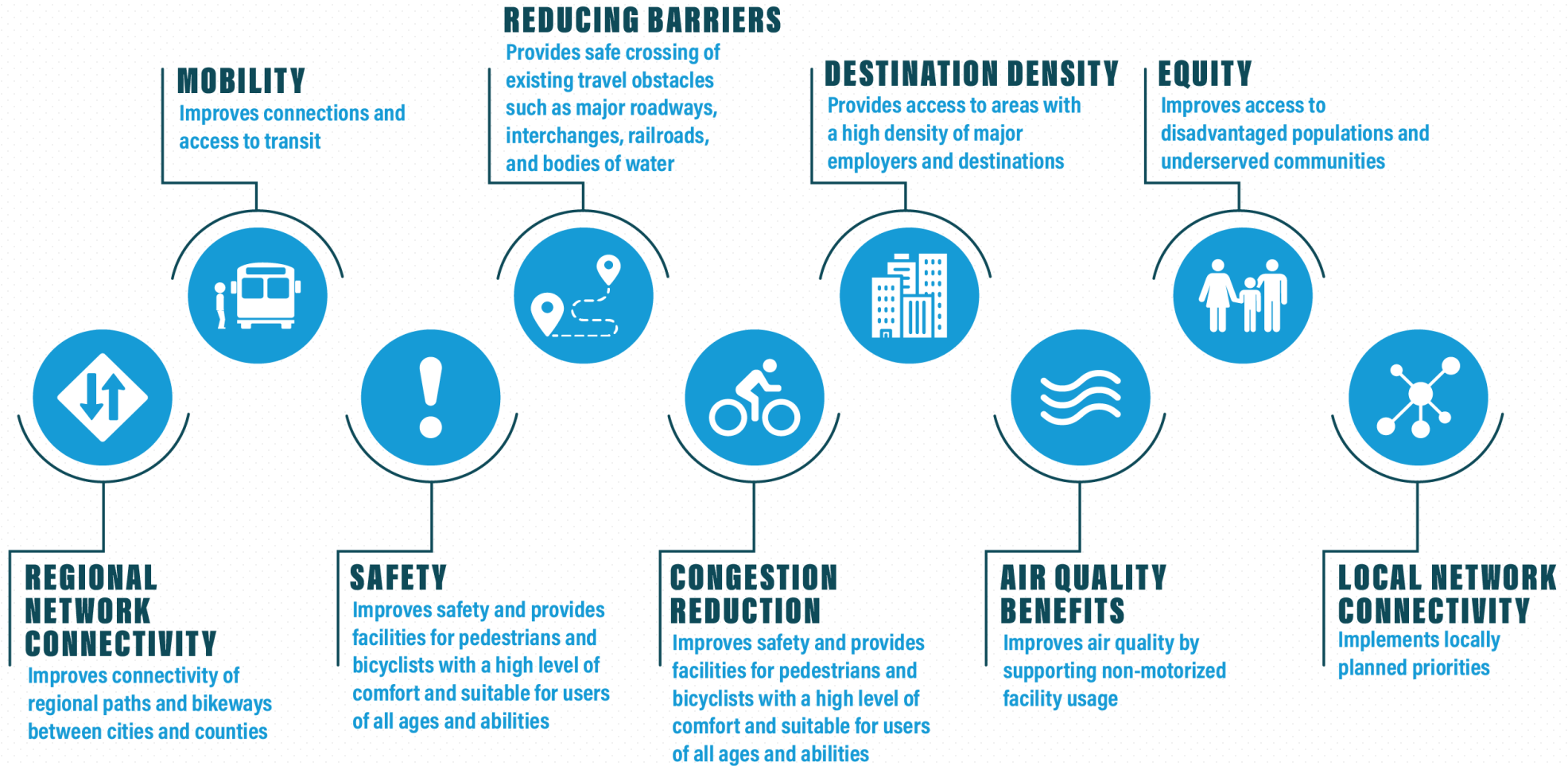
Eligibility

Facilities for Active Transportation (Pedestrians and Bicycles)

Active transportation projects are those that make non-motorized transport safe, convenient, and appealing. Such projects eligible for TA Set-Aside Program funding include the following activities:

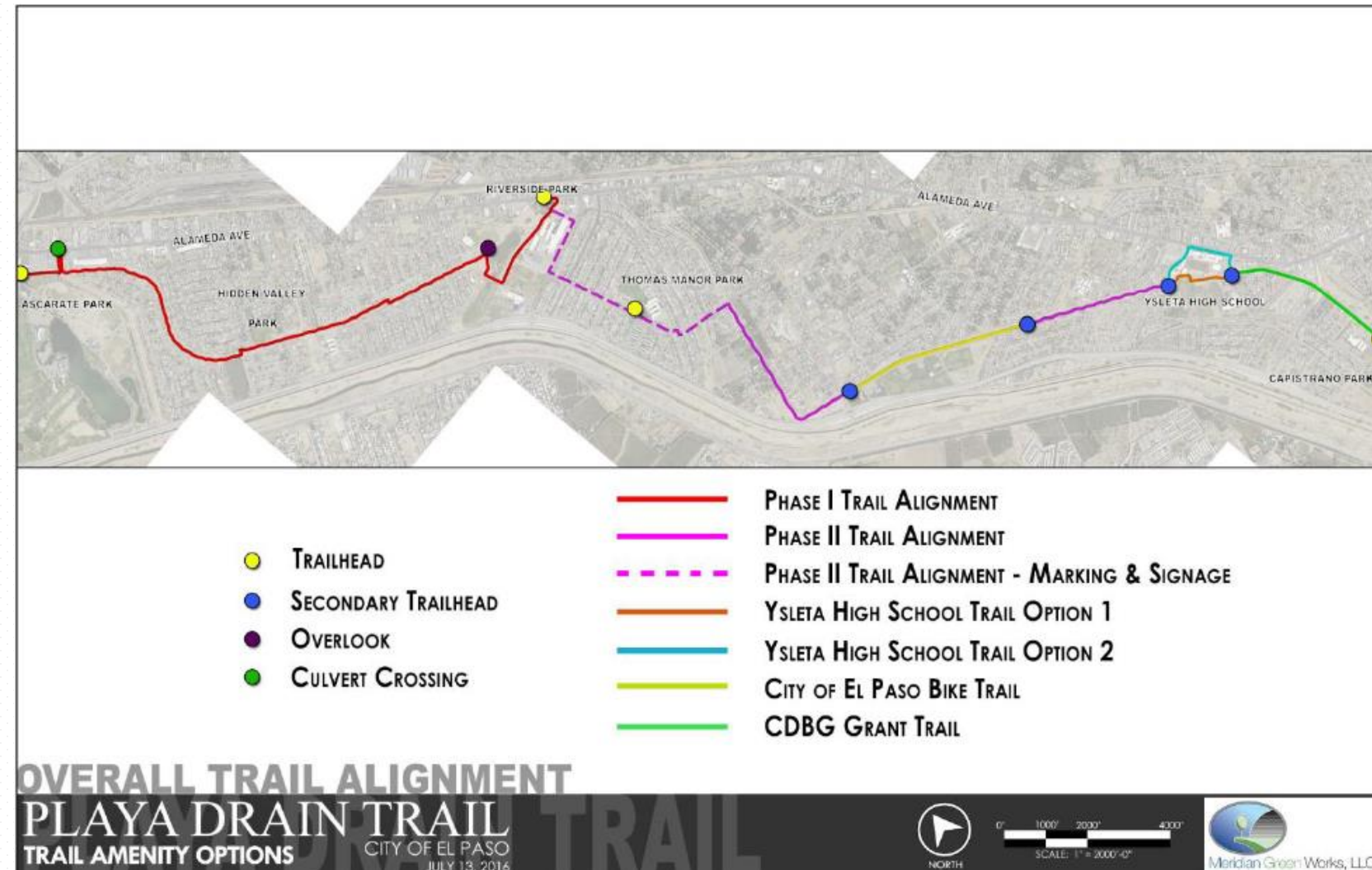
- a) **Construction, planning, and design** of on-road and off-road trail facilities for pedestrians, bicyclists, and other non-motorized forms of transportation, including sidewalks, **bicycle infrastructure, pedestrian and bicycle signals, traffic-calming techniques**, lighting and other safety-related infrastructure, and transportation projects to achieve compliance with the **Americans with Disabilities Act** of 1990 (42 U.S.C. 12101 et seq.).
- b) Construction, planning, and design of infrastructure-related projects and systems that will provide **safe routes** for non-drivers, including children, older adults, and individuals with disabilities to access daily needs.
- c) Conversion and use of abandoned railroad corridors for trails for pedestrians, bicyclists, or other non-motorized transportation users.

Criteria



Project Overview

5



Completed:

PDNHF

Ascarate Park to Riverside Park

City of El Paso

Independence Drive Trail (MPO)
Ysleta to Capistrano Trail (CDBG)

Project Location

2021: Whittier Drive to Elvin Way
.73 miles



2022: Padilla Drive to S Zaragoza Road
.67 miles

Project Scope

Playa Drain Shared Use Path

- Projects would include:
 - Pedestrian and bicycle path with signage
 - Landscaping
 - ADA curb ramps
 - Safe mid-block crossings

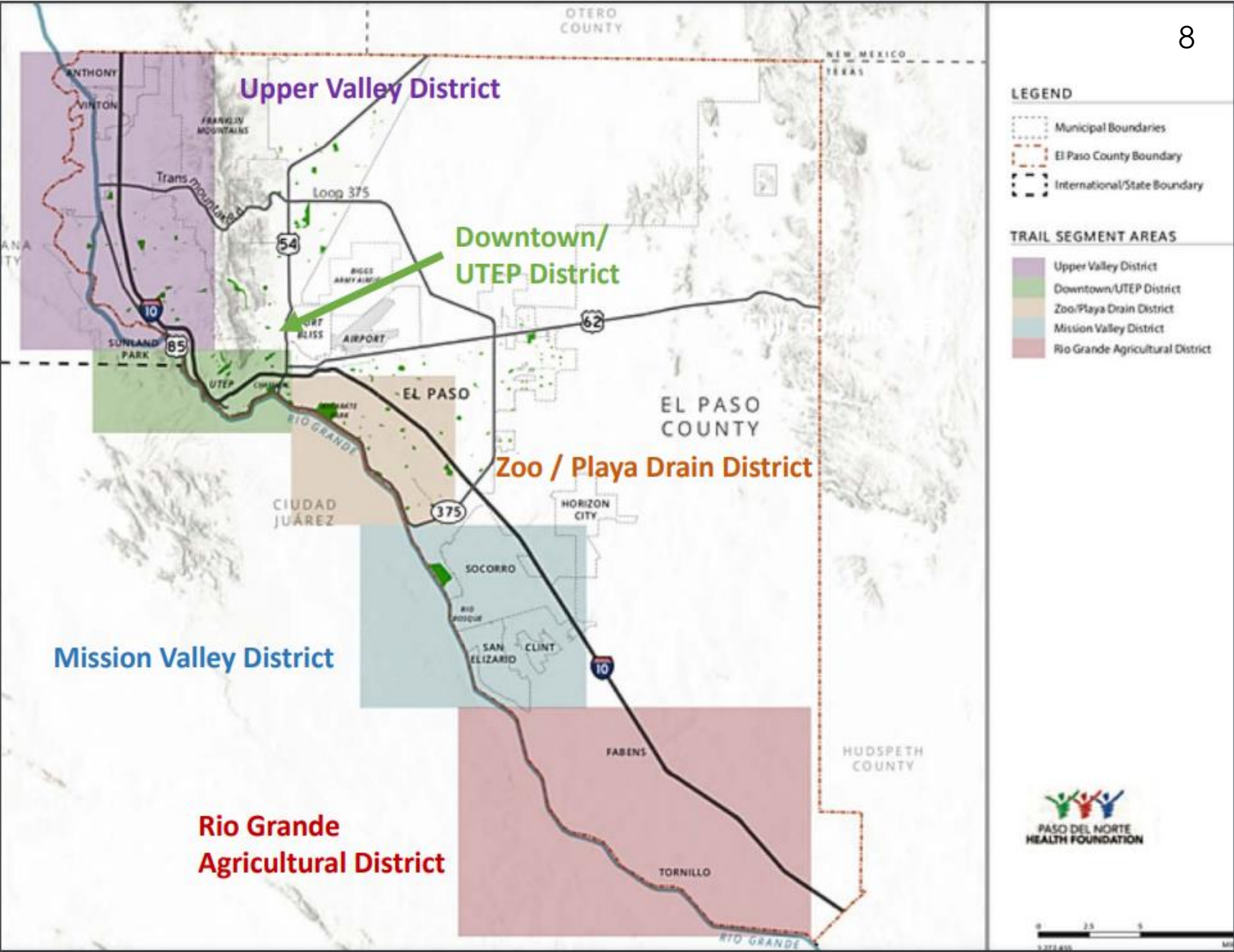


7

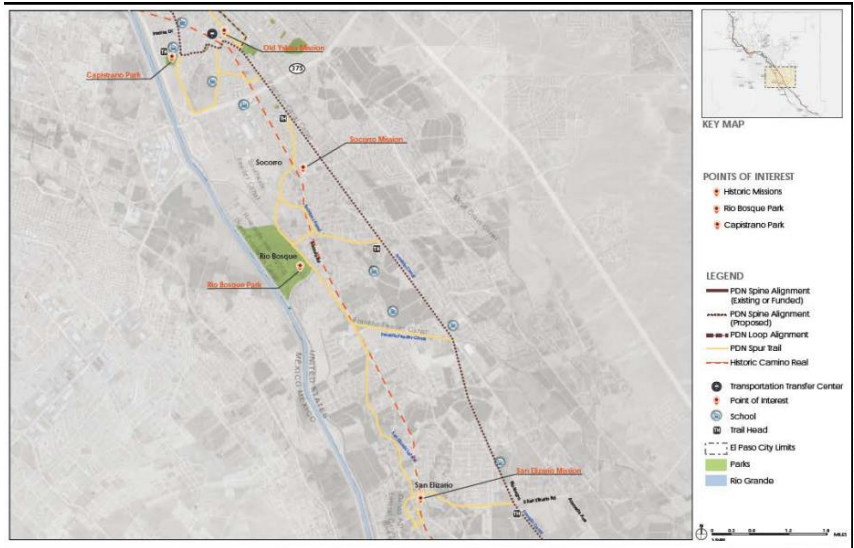
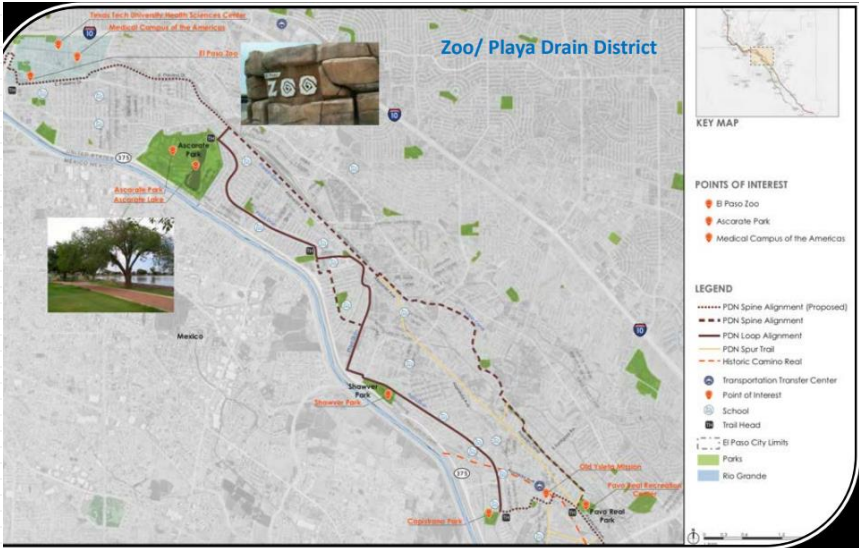
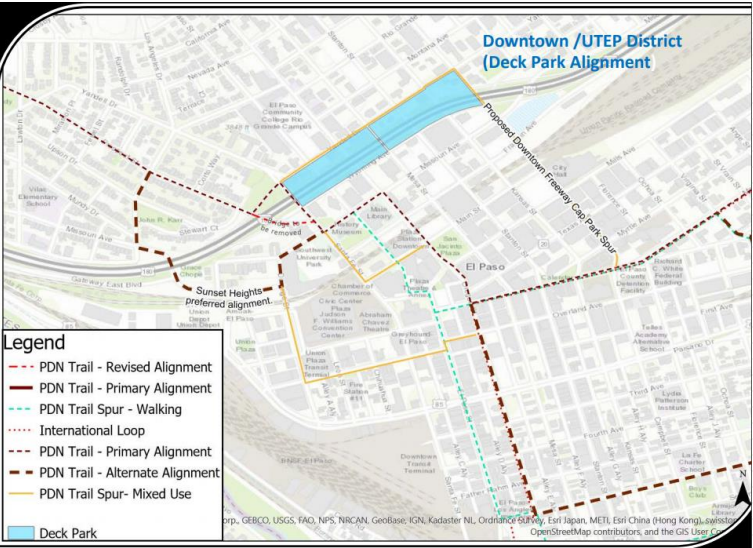
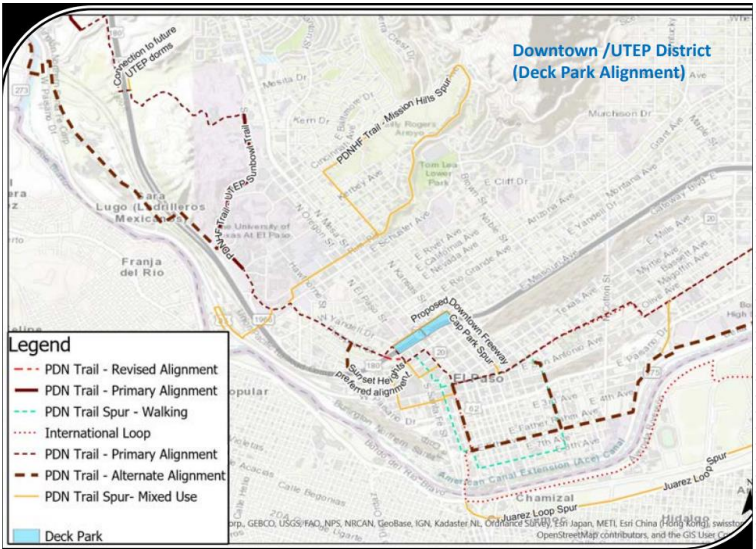
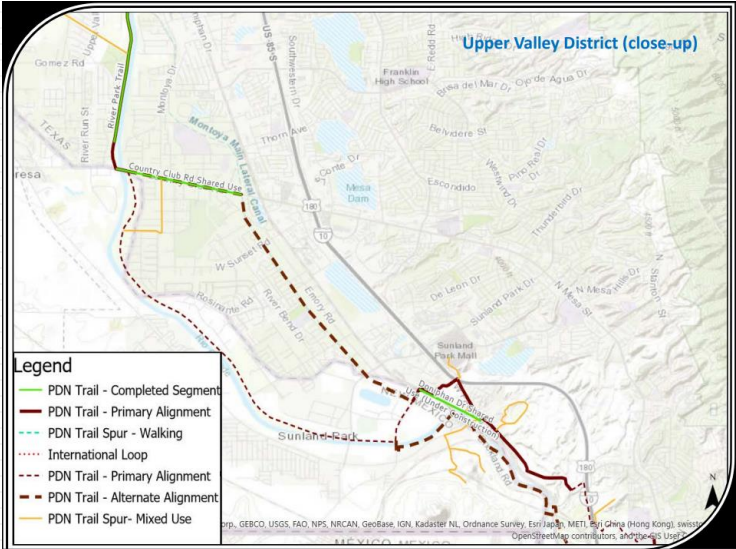
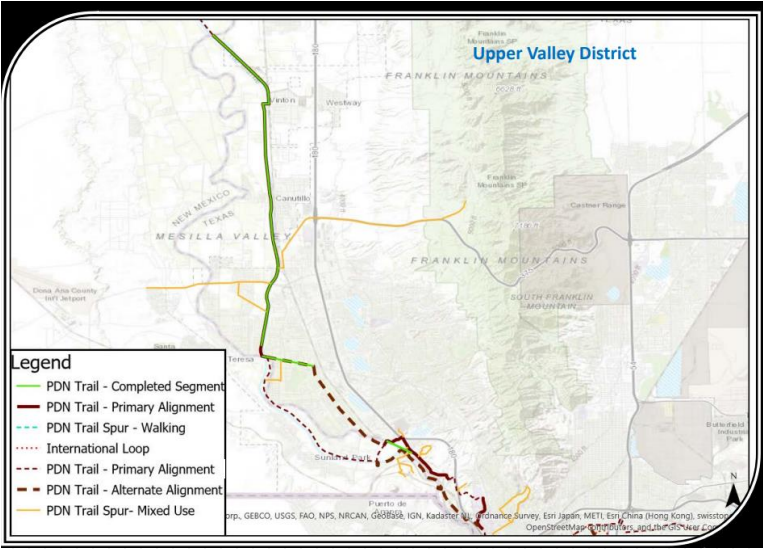


Master Plan

	Length (miles)	Length (% of full trail)
City of El Paso	28.27	41%
El Paso County	18.47	27%
Socorro	7.77	11%
Canutillo	5.22	8%
San Elizario	3.18	5%
Fabens	2.59	4%
Vinton	1.39	2%
Anthony	1.31	2%
Sunland Park	0.76	1%
Total PDN Trail	68.96	



Master Plan



CRITERIA	SCORING (pts)	CRITERIA MET BY		
Regional Network Connectivity	25	Being part of the 68.96 mile Playa Drain Trial across 5 different districts		
Mobility	20	Providing connectivity and access to 4 bus stops on Independence Dr., 3 bus stops on Lee Startling Dr., 1 transit stop on Elvin Way, and 1 Alameda BRIO station at Davis Dr.		
Safety	15	Providing enhanced crossing treatments at mid-block crossings including rectangular rapid flashing beacons (RRFB), embedded pavement flashing light system at crosswalk and curb extensions at intersections. Provide safe routes to schools: Capistrano Elementary, Ysleta Middle and High, and Alicia R Chacon		
Reducing Barriers	10	Removing the gate that prevents access to current path and by including mid-block crossings with flashing beacons and curb extensions to make crossing intersections easier for pedestrians as well as the installation of embedded flashing lights at crosswalks.		
Congestion Reduction	10	Providing a safe comfortable alternative to single occupant vehicles		
Destination Density	5	Providing access to Yselta, Shawver and Capistrano Park, as well as retail, commercial and convenience stores.		
Air Quality Benefits	5	Providing a safe comfortable path for pedestrians and bicyclists to walk or bike instead of drive		
Equity	5	Providing improvements in an underserved area		
Local Network Connectivity	5	Providing access to schools, parks, neighborhoods and commercial centers.		
Project Readiness*	20	Currently at 30% complete. Schematics are complete for this project (including cross sections). Construction plans will need to go through TxDOT District Review.		
*Project Readiness Weighting		Letters of Support	Substantial Community Engagement	Broad Range of Stakeholders
0 - 0% status				
5 - 30% status				
10 - 60% status				
15 - 90% status				
20 - Complete				
Total Possible Points	120			

Amount and Source of Funding

Available Funding for Projects: \$1.4M

2020

2021

2022

Whittier to Elvin 2021

- Estimated total project cost: \$1,697,421
- Estimated Federal participation amount requested \$1.12M (**max available**)
- Estimated **City participation** amount of **\$577,421**
- Design provided by PDNHF

Padilla to Zaragoza 2022

- Estimated total project cost: \$1,678,012
- Estimated Federal participation amount requested \$1.12M (**max available**)
- Estimated **City participation** amount of **\$558,012**

Intelligent Risk Taking City Match and Contribution 34% and 33% respectively



THANK YOU

PLAYA DRAIN TRAIL