



# Street Program Update

August 6, 2019



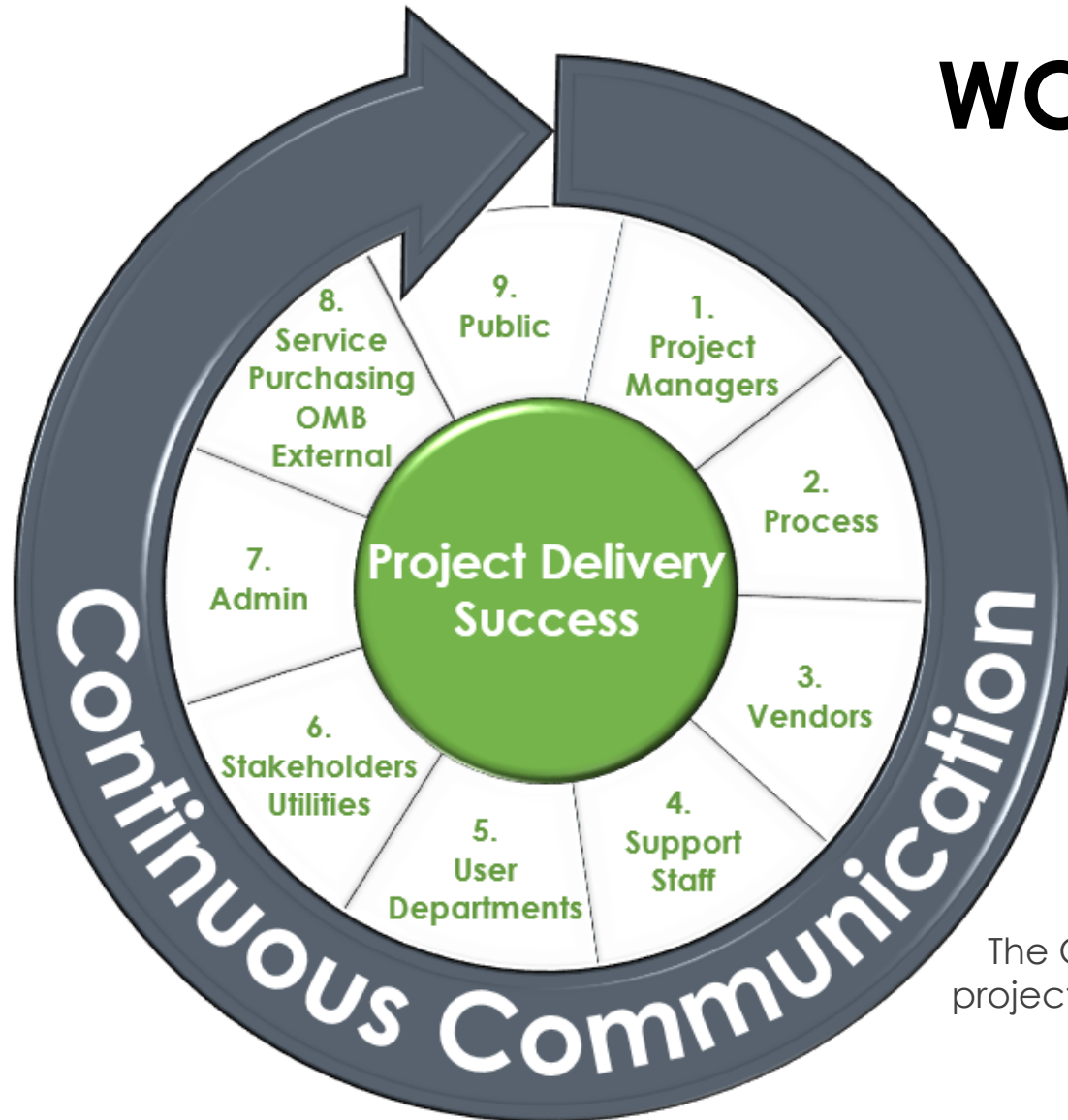
## Strategic Plan Goal:

- 4) Enhance El Paso's Quality of Life through Recreational, Cultural, and Educational Environments
- 6) Set the Standard for Sound Governance and Fiscal Management
- 7) Enhance and Sustain El Paso's Infrastructure Network



POWER IN THE VISION





# WORKING ON IMPROVEMENTS

## CID Internal Control

1. Project Managers
2. Process
3. Vendors
4. Support Staff  
(Executive, Planning, Finance, Contract Compliance)

## External Dependency

5. User Departments
6. Stakeholders / Utilities
7. Administration
8. Service Departments, Purchasing, OMB, External
9. Public

The Capital Improvement Department is improving and ensuring success on project delivery by continuously monitoring and re-defining the delivery method

# History

- **June 26, 2012: City Council approved \$218.4M Street Infrastructure Capital Plan (CIP) for FY2013-FY2019**
- **Little initial progress on CIP implementation; only one project completed between 2012 and 2016.**





## Factors effecting CIP Implementation

- Reallocation of funds for other uses/projects
  - TXDOT
- Emphasis placed on reconstruction; measures not taken to preserve road pavement in good condition
- Cost estimates did not fully account for
  - landscaping
  - complete street e.g. (lighting, sidewalks, bike lanes)
  - drainage
  - subsurface stabilization
  - utility elements.
- Implementation schedule did not include property acquisition



## Factors effecting CIP Implementation

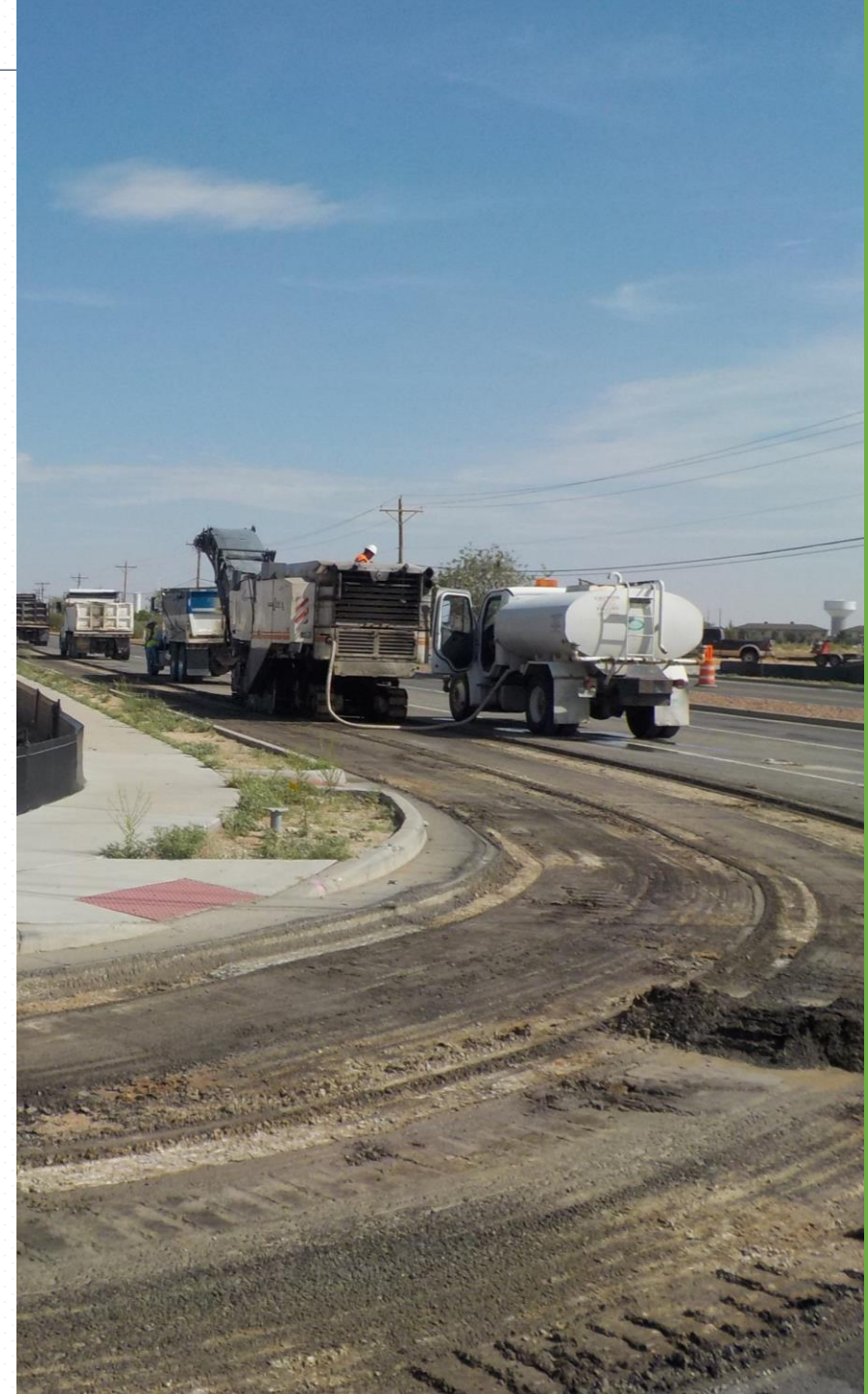
- May 2014 change in City's design standards (NACTO Urban Street Design/Urban Bikeway Design)
- Shifting priorities resulting from changes in travel patterns
- Impacts of TxDOT plans
- Inefficient contracting mechanisms



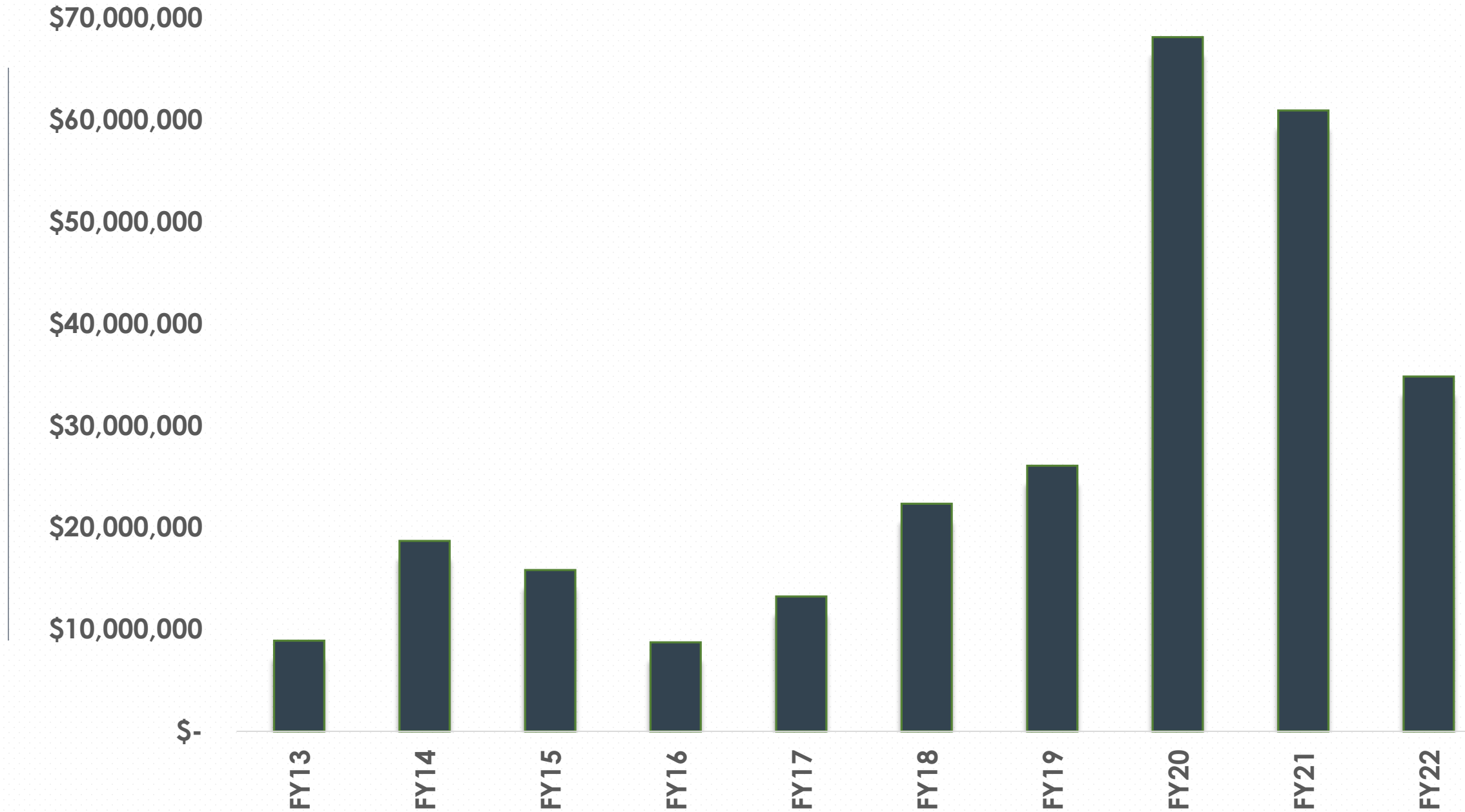


# History

- **March 2016: City Council CIP recalibration**
  - ✓ Observations and input from public
  - ✓ Dedicated funding for specific street improvements
  - ✓ Greater Council oversight of CIP implementation
- **August 2017: Council approved expediting arterial resurfacing**
- **December 2017 Council approved expediting reconstruction projects**
- **April 2018 Council approved 2019 Capital Plan**



# Spending Over Time



# Reconstruction Progress

Status	3/8/2016	12/18/2017	2/14/2019	6/1/2019
Completed	2	10	18	21
Construction	6	7	25	27
Design	10	27	22	17
Programmed	47	21	0	0
<b>TOTAL</b>	<b>65</b>	<b>65</b>	<b>65</b>	<b>65</b>



# Reconstruction Progress (Active Projects)

**68 TOTAL PROJECTS (65+3 NTMP)**

- **21 COMPLETED**
- **30 CONSTRUCTION**
- **17 DESIGN**

**\*Status numbers does not include the 45 unfunded projects**



# Active Reconstruction Projects

Project	District	Est. Construction Start	Estimate
Annie and Ethel Reconstruction, Montoya Heights Sidewalk (3)	1	In Construction	\$2,811,140
Canterbury Trail	1	TBD	\$1,302,300
Redd Road Median Landscape and Lighting	1	In Construction	\$3,656,734
Robinson Reconstruction Phase II	1	Summer 2019	\$2,700,622
Edgemere Trail Widening, Lighting and Landscape (3)	3	In Construction	\$1,756,700
Glenwood Reconstruction	3	In Construction	\$2,004,167
Mimosa Reconstruction	3	Winter 2019	\$2,411,000
Sunglow Landscaping	3	Winter 2019	\$388,351
Toni, Mary Jeanne, Yvonne Reconstruction	3	In Construction	\$1,486,338
Viscount Street Improvement Lighting	3	Winter 2019	\$3,053,700
MCA Quiet Zone	3, 8	Summer 2019	\$6,162,048



# Active Reconstruction Projects

Project	District	Est. Construction Start	Estimate
John Hayes Arterial Lighting	5	Fall 2019	\$1,145,656
Rich Beem Street Lighting	5	Summer 2019	\$1,780,220
Davis Reconstruction	6	Winter 2019	\$1,851,322
New Haven Reconstruction	6	Summer 2019	\$1,984,000
Padilla Reconstruction	6	Winter 2019	\$2,249,005
Phillipy Reconstruction	6	TBD	\$797,632
Snelson Reconstruction	6	Fall 2019	\$740,000
Holly Reconstruction	7	Winter 2019	\$796,000
James Reconstruction	7	Summer 2019	\$1,303,000
Lomaland, Paddlefoot, McCune Reconstruction (3)	7	Fall 2019	\$8,055,000
Lowd Reconstruction	7	Fall 2019	\$1,944,000
Mauer Rd NTMP	7	Summer 2019	\$400,000
Gene Torres NTMP	7	Winter 2019	\$798,600
Deer Ave NTMP	4	In Construction	\$523,283

# Active Reconstruction Projects

Project	District	Est. Construction Start	Estimate
Alicia and Flower Reconstruction (2) (Phase 1)	3, 8	In Construction	\$12,954,277
Princeton, Tulane, Valley View Reconstruction (3)	7	In Construction	\$6,599,000
River Bend Phase III	8	Fall 2019	\$3,340,200
Teramar Reconstruction	8	Summer 2019	\$1,319,000
Yarbrough Street Lighting	3, 7	Fall 2019	\$1,317,800
Encino(North of Delta), DeVargas, Cortez(North of Delta) Reconstruction (3) (Phase 2)	3	In Construction	\$8,621,284
Encino (South of Delta), Elena, Feliz Reconstruction (Phase 3)	8	Summer 2019	\$4,461,015
Edna(West of Concepcion), Dolan Reconstruction (2) (Phase 4)	8	Fall 2019	\$3,930,215
Edna(East of Concepcion), Cortez (South of Delta) Reconstruction (Phase 5)	8	Fall 2019	\$6,224,221
RC Poe and Edgemere Roundabout	5	In Construction	\$2,455,826
ESTIMATED TOTAL			\$103,323,656



# Completed Projects: 21

Barker Reconstruction	Monroe 2-way conversion
Central at Paisano	Pebble Hills Extension
Cielo Vista Sidewalk Repair	Pendle Reconstruction
Edgemere Parkway	Ramos Reconstruction
Independence Trail and Amenities (2)	Rim at Hague Intersection Improvements
Kernel Reconstruction	Robinson Reconstruction Phase I
Little Flower Reconstruction	Springwood Traffic Calming
Love Rd Property Acquisition	University Pedestrian Improvements
Manor Reconstruction	Van Buren 2-way conversion
Mesquite Hills Street Lighting	Geiger, Cardis, Malaga Reconstruction

Carpenter Reconstruction completed with CDBG  
(not part of 65)



# Capital Plans

---

## 2017 – 2018 - 2019



# Street Improvements

## Projects in Process (2017 Capital Plan)

Street	Scope	Estimate	Est. Construction Start
Alameda and Whittier Signal	Signal Installation	\$300,000	FY2019
Doniphan and Bird Signal	Signal Installation	\$300,000	BNSF
Doniphan and West Green Signal	Signal Installation	\$300,000	BNSF
North Loop and Lafayette Signal	Signal Installation	\$300,000	FY2019
Northwestern and Helen of Troy Signal	Signal Installation	\$300,000	FY2019
Paseo de las Luces	Pedestrian Improvements	\$6,400,000	Completed



Paseo de las  
Luces

# Street Improvements

## Projects in Process (2017 Capital Plan)

Street	Scope	Estimate	Est. Construction Start
Pellicano and Michaelangelo Signal	Signal Installation	\$300,000	Summer 2019
Resler and Nardo Goodman Signal	Signal Installation	\$300,000	Summer 2019
Schuster and El Paso Signal	Signal Installation	\$300,000	Summer 2019
Silver Spring and Shadow Mountain Signal	Signal Installation	\$300,000	Summer 2019
Zaragoza and John Hayes Signal	Signal Installation	\$300,000	Summer 2019

# Street Improvements

## Projects in Process (2018 Capital Plan)

Street	Scope	Estimate	Est. Construction Start
Brian Ray Reconstruction	Reconstruction	\$2,121,000	Fall 2019
Downtown Sidewalks	Pedestrian Improvements	\$598,700	Ongoing
Hawkins Reconstruction	Reconstruction	\$9,360,000	Fall 2019
Railroad Reconstruction	Reconstruction	\$13,777,436	Summer 2020
Schuster Reconstruction	Reconstruction	\$7,559,900	Spring 2020
Ted Houghton Reconstruction	Reconstruction	\$1,273,800	Winter 2019



Hawkins Existing  
Conditions

Brian Ray  
Existing Conditions





# Street Improvements

## Projects in Process (2019 Capital Plan)

Street	Scope	Estimate	Est. Construction Start
El Paso Citywide Wayfinding Phase I	Miscellaneous	\$3,000,000	Fall 2019
Pellicano Dr, Railroad Dr, Cotton Street Median Improvements	Lighting/Landscaping	\$10,079,200	Fall 2019
Yarbrough Dr, George Dieter Dr, Lee Trevino Median Improvements	Lighting/Landscaping	\$8,327,600	Winter 2019

# Streets and Maintenance Program Update

- Streets Resurfacing Program History
- Street Resurfacing Update
- Asphalt Patching Operations Update

# Streets and Maintenance Program Update

Streets Resurfacing Program History



# General Facts about City Streets

21

- Original construction of a street comes through the development process
  - As new streets are accepted along with new subdivisions, they become an asset for the City to maintain
- Expected useful life of street pavement surface in El Paso is at least 25 years; soil conditions, traffic volumes, drainage on a street, and other factors can cause pavement deterioration sooner
- Within the City Limits, the City maintains approximately 6,117 streets
  - 5,769 Residential Streets – (94% of network)
  - 188 Arterial Streets (example - Yarbrough)
  - 160 Collector Streets (example – Album)
  - Over 2,516 centerline miles

Does not include State Highways, County Roads, and private streets



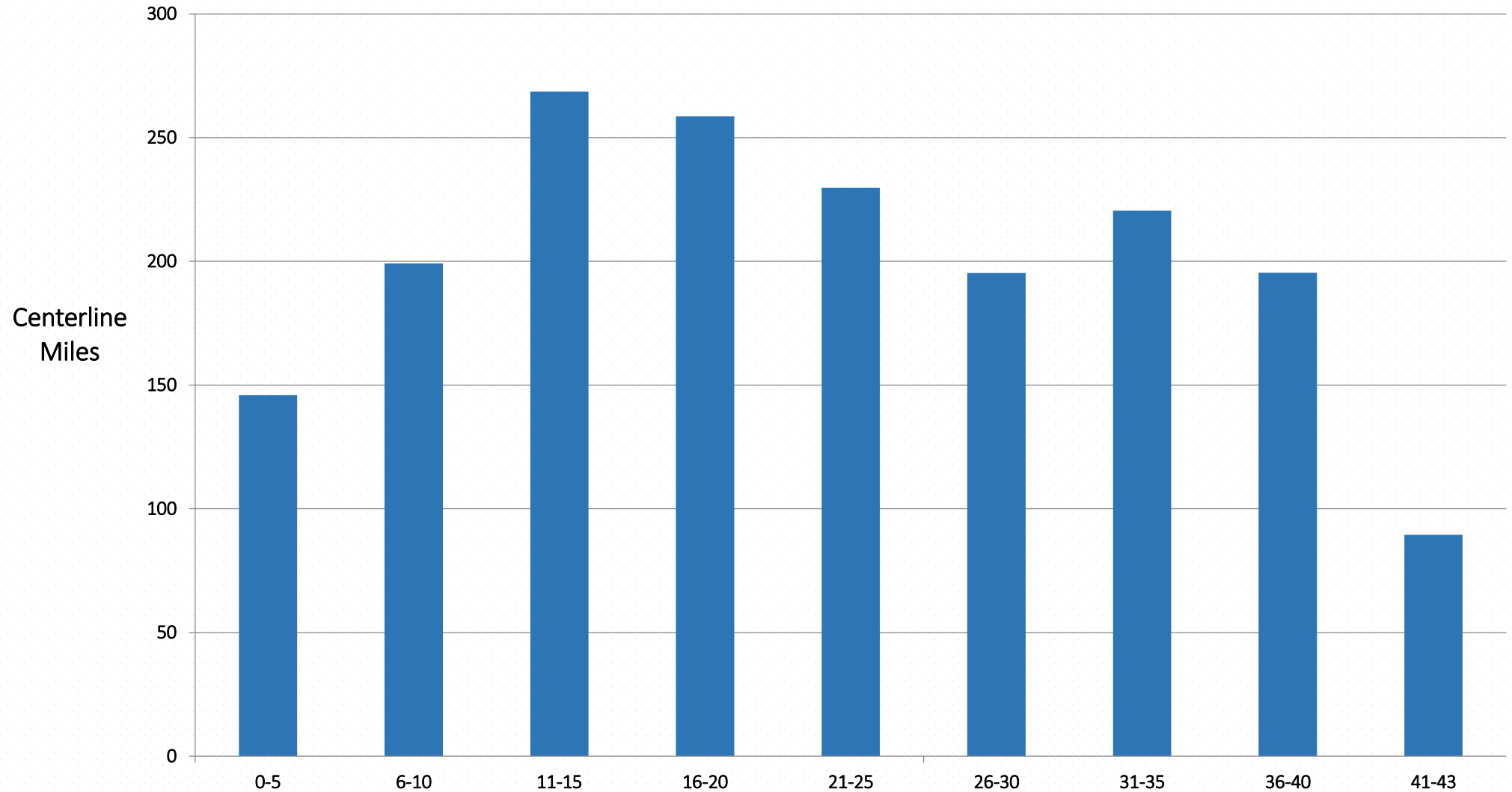
# Contributing Factors to Present Day Street Conditions

22

- Historical investment in street resurfacing and reconstruction
- Through development many streets have assumed larger traffic volumes than they were constructed to support
- Damage from storm water runoff and drainage systems – water penetrations deteriorate pavement and subgrade
- Impact of illegal pavement cuts



# Estimated Ages of pavement in the City



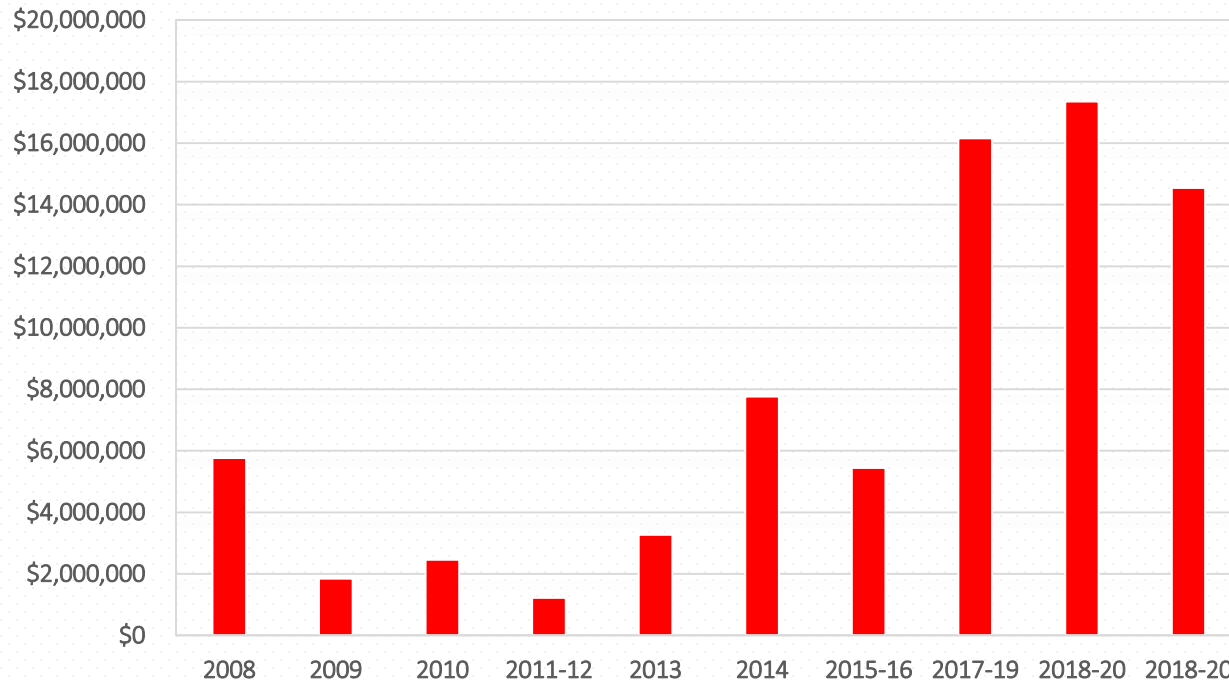
Based on  
2018 PCI  
Study



# Recent Street Resurfacing Investment

Over this period – the City invested \$75.8 million on street resurfacing projects

24

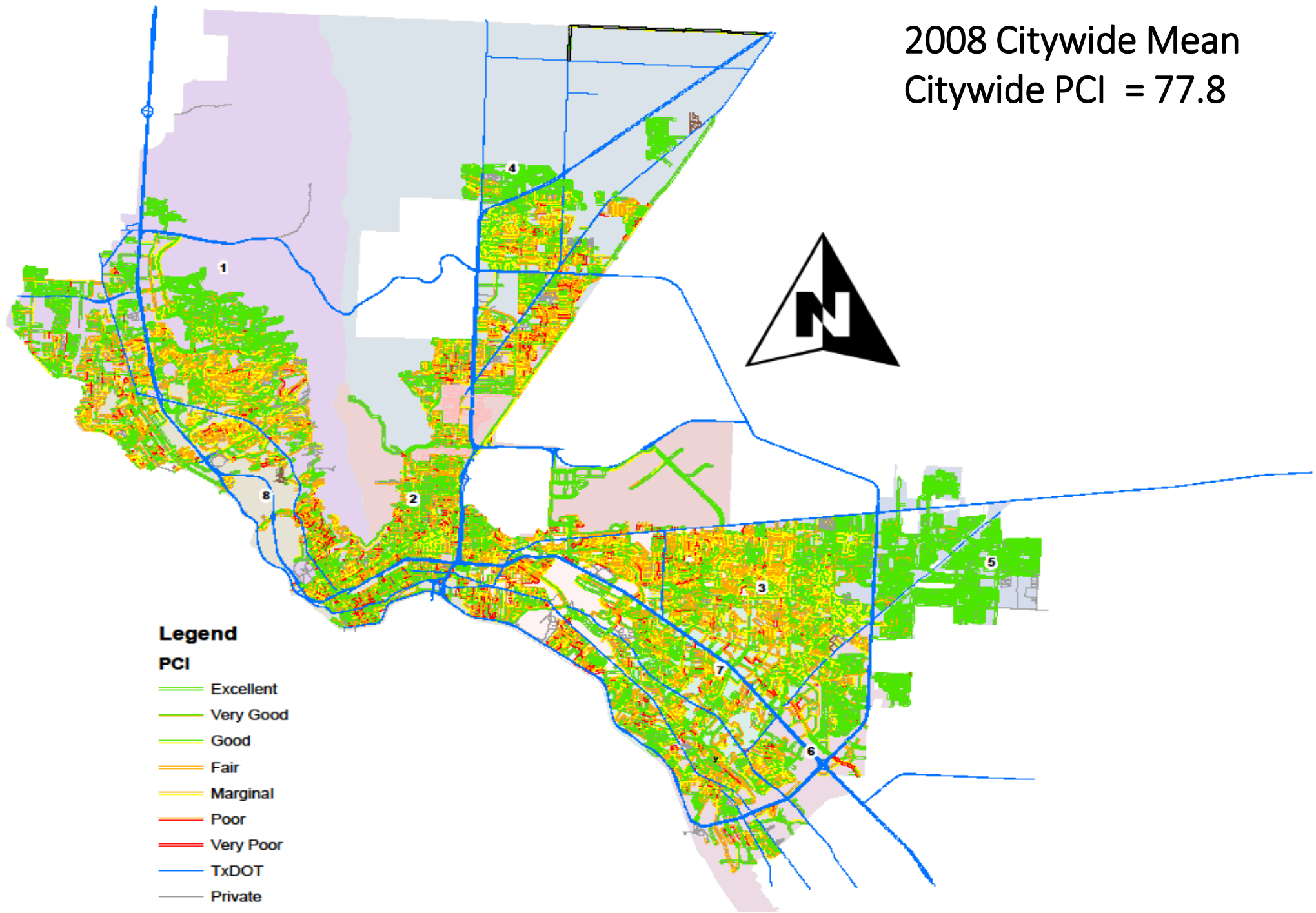


Contract Year	Contract Value
2008	\$5,761,805
2009	\$1,846,445
2010	\$2,462,740
2011-12	\$1,217,550
2013	\$3,267,002
2014	\$7,766,732
2015-16	\$5,444,998
2017-19	\$16,155,561
2018-20	\$17,353,250
2018-20	\$14,548,887

Yellow highlighted  
are active contracts –  
not yet completed

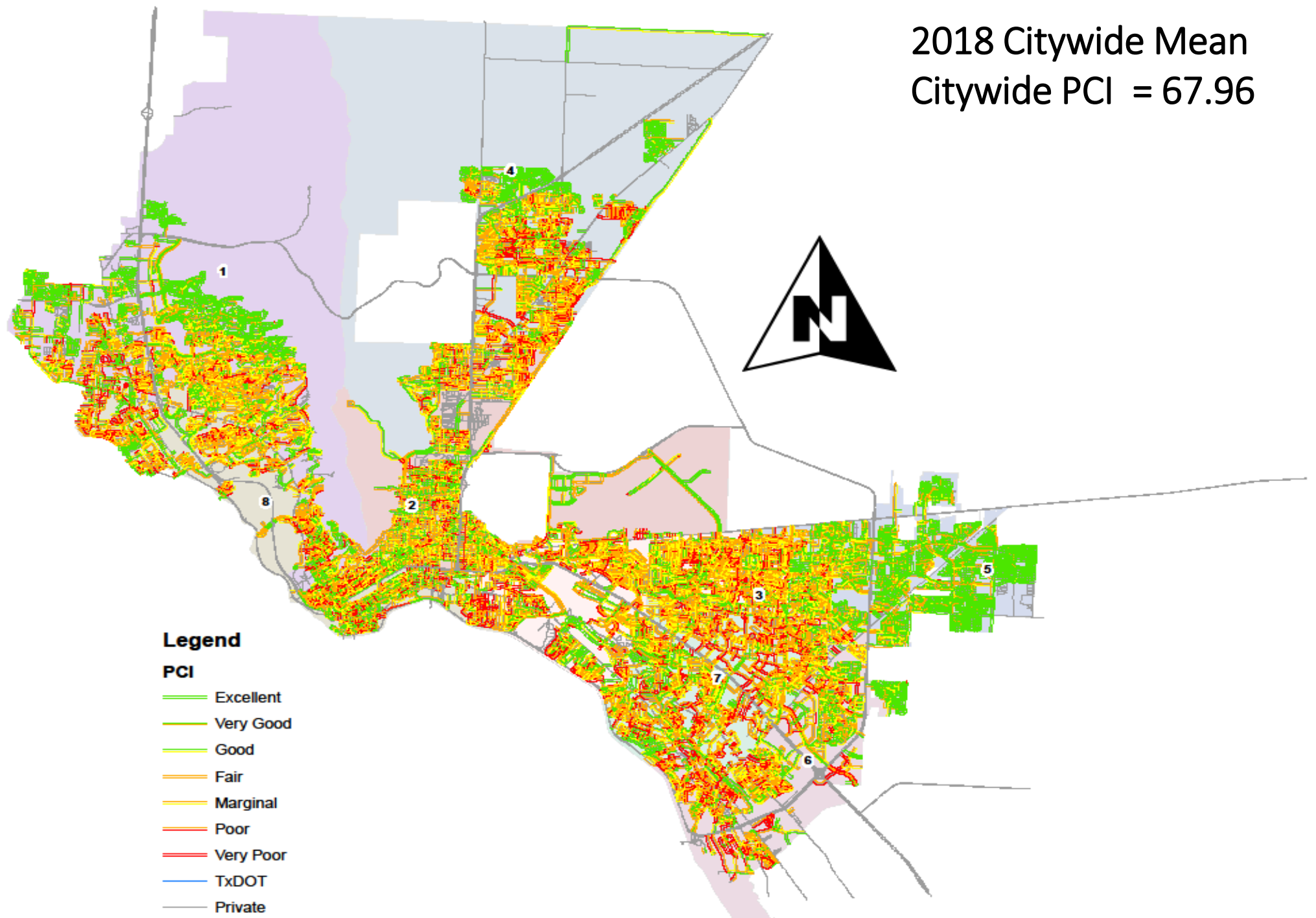
- Since 2008, **620** Streets were resurfaced – approximately **10%** of the present day inventory (6,117 streets)
- Under a Best Practices scenario over that period, maintaining a **25** year street pavement life would have required **40%** of the inventory be paved
- Decisions on street resurfacing funding in the past have a direct impact on present day street conditions
  - Streets that could have been paved over the period continue to deteriorate
  - Streets that require reconstruction could have been handed through resurfacing
  - Streets requiring resurfacing could have benefited from slurry seals, micro-surfacing
  - As a result, the Citywide Pavement Condition Index dropped by 10 points
    - 77.8 in 2008
    - 67.96 in 2018

2008 Citywide Mean  
Citywide PCI = 77.8





2018 Citywide Mean  
Citywide PCI = 67.96



## Streets Resurfacing Update

# Street Resurfacing Program Summary

## Three Active Street Resurfacing Projects:

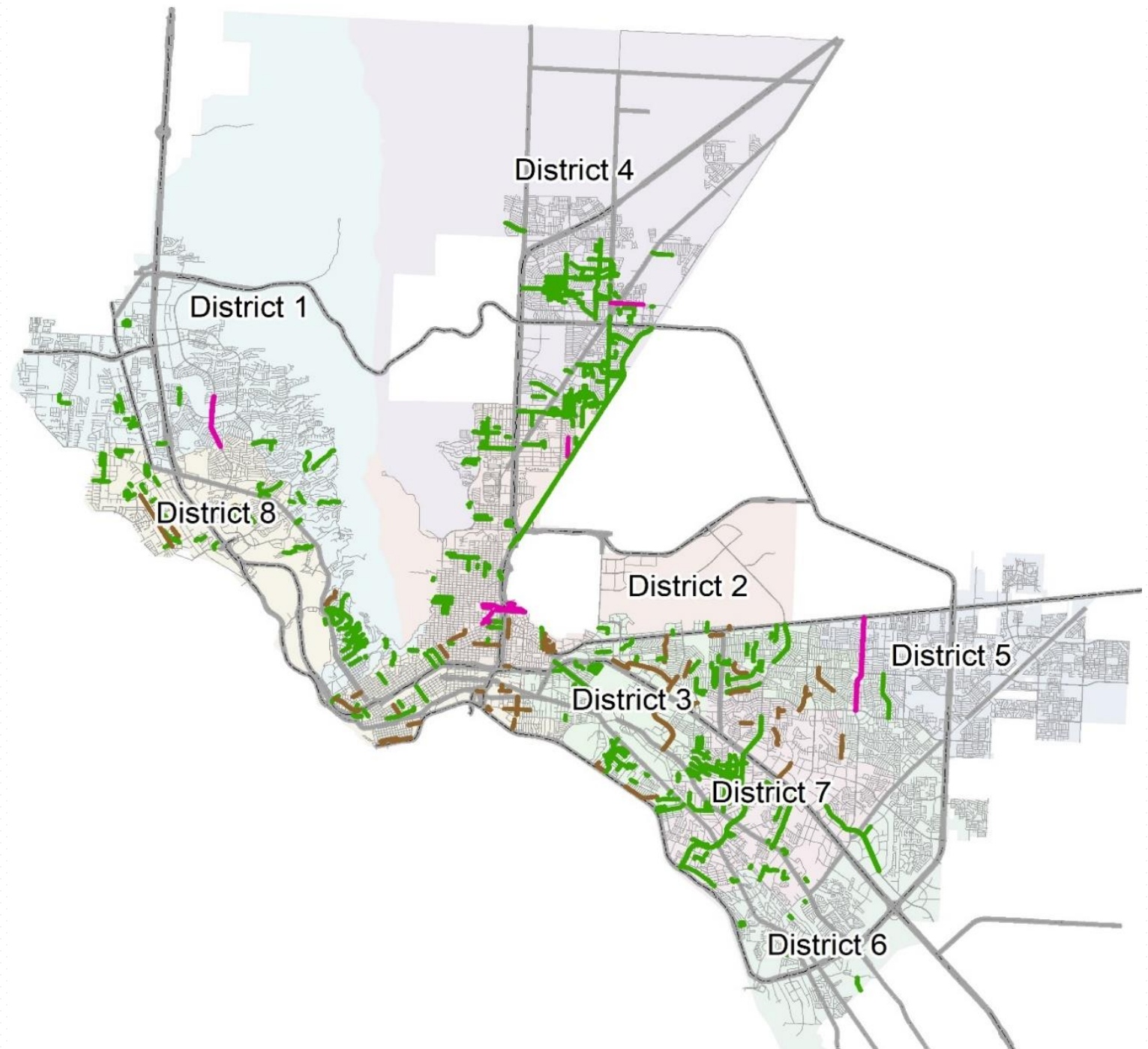
- 2012 Street CIP for Street Resurfacing
  - 313 Streets Completed to date – remainder under contract until April 2020
- Arterial Resurfacing Program
  - Segments on 5 Arterial streets substantially completed to date
- Street Maintenance Fee Program
  - Programmed streets for FY19 substantially completed
  - Funding for the FY20 streets is included in the Proposed Budget
- **123 Streets Remain to be resurfaced in this program over the next year**

## 2012 Street CIP Resurfacing Locations

Green Completed streets

Purple Streets In Progress

Brown Remaining streets in Program

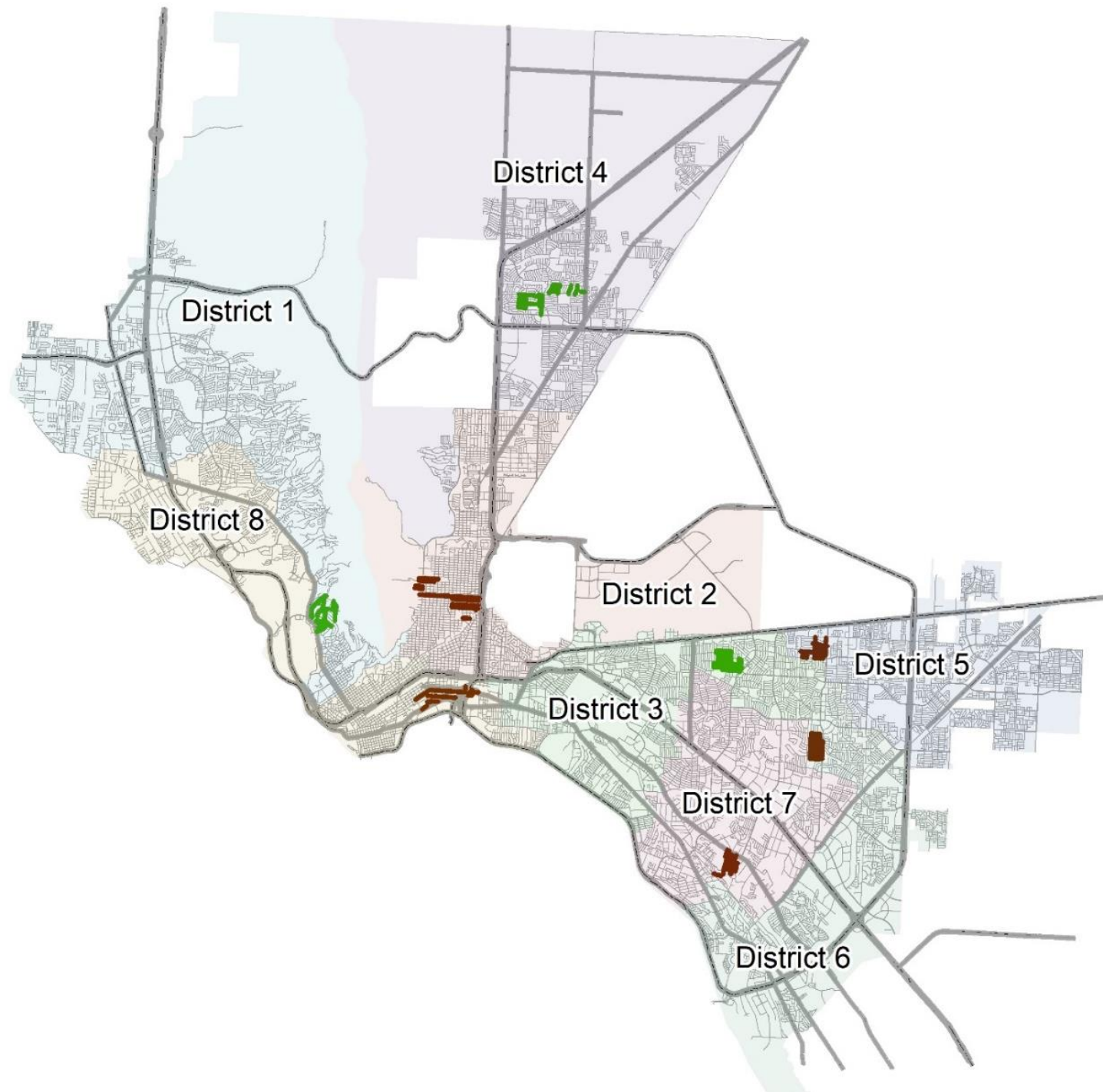




## 2019-20 Residential Program Locations

Green Completed streets

Brown Remaining streets in Program



# District 1

Location	From	To	Status	Program	Location	From	To	Status	Program
PARK HILL	Ridgecrest	Ridgecrest	Summer/Fall 2019	2012 CO's	NEW YORK	St. Vrain	Dead End	Completed	2012 CO's
RESLER	High Ridge	White Cliffs	Summer 2019	Arterials	OCTAVIA	Kerbey CDS	Magoffin	Completed	2012 CO's
ALTACUMBRE	Camino Fuente	Tarascas	Completed	2012 CO's	ONEIDA	Medano	Redd	Completed	2012 CO's
AMPOSTA	Cresta Alta	Westwind	Completed	2012 CO's	OSAPLE	Rio Mira	Dead End	Completed	2012 CO's
BOX ELDER	Gomez	Rollins	Completed	2012 CO's	PAWNEE	Iroquis	Dead End	Completed	2012 CO's
BRENTWOOD	Stanton	Krupp	Completed	2012 CO's	PEBBLE BEACH	Shadow Mountain	Burning Tree	Completed	2012 CO's
BUTTERFIELD	Territory	Rio Mira	Completed	2012 CO's	RHAELYNNE	Cory	Upper Valley	Completed	2012 CO's
CALLE OLASO	Equestre	Dead End	Completed	2012 CO's	RIO MIRA	Butterfield	Territory	Completed	2012 CO's
CHERRY HILL	Broadmoor	Thunderbird	Completed	2012 CO's	ROXANNA	Ridge	Marietta	Completed	2012 CO's
CINCINNATI	Kansas	Piedmont	Completed	2012 CO's	SAN MATEO	La Cruz	Peidmont	Completed	2012 CO's
CLAYTON	Galloway	Robinson	Completed	2012 CO's	SANTA RITA	Las Vegas	Okeefe	Completed	2012 CO's
COSTA BLANCA	Pinar del Rio	Redd	Completed	2012 CO's	SINGING HILLS	Thunderbird	Thunderbird	Completed	2012 CO's
DEDE	Rim	Cul-de-Sac	Completed	2012 CO's	SOLEDAD	Mulberry	La Mirada	Completed	2012 CO's
FLAMINGO	Krupp	Stanton	Completed	2012 CO's	TERRITORY	Butterfield	Rio Mira	Completed	2012 CO's
GALLOWAY	Stanton	Piedmont	Completed	2012 CO's	WALLINGTON	Krupp	Brentwood	Completed	2012 CO's
HILLCREST	Bancroft	Dead End	Completed	2012 CO's	WELLESLEY	Kern	Campbell	Completed	2012 CO's
INDIAN BLUFF	Crown Point	Caprock	Completed	2012 CO's	BERKSHIRE	Brentwood	Waymore	Completed	Residential
IRONDALE	Lawndale	Stanton	Completed	2012 CO's	BUCKINGHAM	Canterbury	Stanton	Completed	Residential
KELLY	Kern	Whitaker	Completed	2012 CO's	CANTERBURY	Stanton	Santa Rita	Completed	Residential
KRUPP	Waymore	Ridgecrest	Completed	2012 CO's	DARWOOD	Krupp	Waymore	Completed	Residential
LA CRUZ	Okeefe	Piedmont	Completed	2012 CO's	DONNYBROOK	Okeefe	CDS	Completed	Residential
LARCHMONT	Krupp	Waymore	Completed	2012 CO's	GREENWICH	Krupp	Berkshire	Completed	Residential
LOS NIETOS	La Mirada	La Mirada	Completed	2012 CO's	HAMPSHIRE	Wallington	Stanton	Completed	Residential
MADELINE	Piedmont	Park	Completed	2012 CO's	OKEEFE	Santa Rita	Bacerac	Completed	Residential
MESA HILLS	Mesa	Acacia	Completed	2012 CO's	RIDGECREST	Canterbury	Park Hill	Completed	Residential
MESITA	Peidmont	Stanton	Completed	2012 CO's	STANTON	Canterbury	Okeefe	Completed	Residential
MOORE	Piedmont	Stockwell	Completed	2012 CO's	WAYMORE	Mesa	Stanton	Completed	Residential
NAVARIE	Pinar del Rio	Redd	Completed	2012 CO's					

Completed – 53  
In progress – 2

# District 2

Location	From	To	Status	Program	Location	From	To	Status	Program
CORTE DEL SOL	Mobile	CDS	Fall/Summer 2019	Residential	DIAMOND	Westline	Echo	Completed	2012 CO's
IDALIA	Copia	Pollard	Fall/Summer 2019	Residential	DOLOMITE	Magnetic	Zircon	Completed	2012 CO's
JACKSON	Oklahoma	Raynor	Fall/Summer 2019	Residential	ECHO	Hercules	Moonlight	Completed	2012 CO's
MCKINLEY	Oklahoma	Piedras	Fall/Summer 2019	Residential	ELM	Mobile	Richmond	Completed	2012 CO's
MOBILE	Copia	CDS	Fall/Summer 2019	Residential	HOMER	Gateway South	Joyce	Completed	2012 CO's
MOREHEAD	Nebraska	Alabama	Fall/Summer 2019	Residential	JADE	Zircon	Echo	Completed	2012 CO's
NATIONS	Nebraska	Alabama	Fall/Summer 2019	Residential	JUSTUS	Jefferson	Tyler	Completed	2012 CO's
PORTER	Alabama CDS	Pollard	Fall/Summer 2019	Residential	LAMAR	Bliss	Hueco	Completed	2012 CO's
SACRAMENTO	Copia	Pollard	Fall/Summer 2019	Residential	LOUISIANA	Mobile	Richmond	Completed	2012 CO's
SAVANNAH	Stevens	Partello	Fall/Summer 2019	Residential	MATTERHORN	Rutherford	Glacier Peak	Completed	2012 CO's
FRANKFORT	Stevens	Bossworth CDS	IN PROGRESS	2012 CO's	MAXWELL	Gateway North	Dyer	Completed	2012 CO's
HAPPER	Leeds	Cambridge	IN PROGRESS	2012 CO's	MAXWELL	Dyer	Diana	Completed	2012 CO's
HASTINGS	Happer	Gateway South	IN PROGRESS	2012 CO's	MCGREGOR	Maxwell	Diana	Completed	2012 CO's
MEMPHIS	Stevens	Belmont CDS	IN PROGRESS	2012 CO's	MEMPHIS A	Red Rock Canyon	Piedras	Completed	2012 CO's
MOBILE D	Radford	Dead End	IN PROGRESS	2012 CO's	MOBILE A	Piedras	Dead End	Completed	2012 CO's
MOUNT WHITNEY	Tetons	Knox	Spring 2020	2012 CO's	MOUNT DELANO	Hondo Pass	Blue Ridge	Completed	2012 CO's
CLIFTON	Hueco	Gateway South	Summer 2019	2012 CO's	MOUNT ETNA	Rutherford	Glacier Peak	Completed	2012 CO's
FORREST	Hunt	Trowbridge	Summer 2019	2012 CO's	MOUNT HAGEN	Pikes Peak	Blue Ridge	Completed	2012 CO's
GRANT C	Piedras	Copper	Summer 2019	2012 CO's	MOUNT OLYMPUS	Joe Herrera	Glacier Peak	Completed	2012 CO's
GRISSOM	Martin	Mathias	Summer 2019	2012 CO's	MOUNT SAN BERNARD	Joe Herrera	Alps	Completed	2012 CO's
HUNT	Peinado	Glenwood	Summer 2019	2012 CO's	NASHVILLE	Piedras	Dead End	Completed	2012 CO's
MADERA	Radford	Dead End	Summer 2019	2012 CO's	NEBRASKA	Nations	Morehead	Completed	2012 CO's
MARR	Altura	Trowbridge	IN PROGRESS	2012 CO's	OLYMPIC	Magnetic	Gateway South	Completed	2012 CO's
PEINADO	Wagner	Hunt	Summer 2019	2012 CO's	POLK	Byron	Elm	Completed	2012 CO's
WAGNER	Chelsea	Trowbridge	Summer 2019	2012 CO's	POLLARD	Jefferson	Gateway South	Completed	2012 CO's
WEIGHTMAN	Timberwolf	Edwards	Summer 2019	2012 CO's	RAILROAD	Loop 375	US 54	Completed	2012 CO's
WILSON	Pershing	Dead End	IN PROGRESS	2012 CO's	ROBERT	Maxwell	Arlen	Completed	2012 CO's
Alley	Piedras	Raynor	Completed	2012 CO's	SATURN	Edgar Park	Hercules	Completed	2012 CO's
BERYL	Dolomite	Echo	Completed	2012 CO's	SHEPPARD	Alabama	Lackland	Completed	2012 CO's
BRITTON	Dyer	Sierra Vista	Completed	2012 CO's	SOLAR	Edgar Park	Hercules	Completed	2012 CO's
BROADDUS	Alabama	Stevens	Completed	2012 CO's	STATLER	Tetons	Adolphus	Completed	2012 CO's
CAPITAN	Mt Latona	Hercules	Completed	2012 CO's	STRAND	McGregor	Maxwell	Completed	2012 CO's
CHELSEA	Timberwolf	Trowbridge	Completed	2012 CO's	TAYLOR	Piedras	Terminus	Completed	2012 CO's
CROSSON	CDS	CDS	Completed	2012 CO's	TRADEWIND	Mercury	Neptune	Completed	2012 CO's
CUMBERLAND	Pershing	Gateway South	Completed	2012 CO's	VEGA	Polaris	Comet	Completed	2012 CO's
DEVORE	Eclipse	Comet	Completed	2012 CO's					

Completed – 44  
In progress – 7  
Programmed - 20

# District 3

Location	From	To	Status	Program	Location	From	To	Status	Program
EAST GLEN	Pebble Hills	Sam Snead	Fall/Winter 2019/20	2012 CO's	AQUARIUS	Turrentine	Backus	Completed	2012 CO's
ANISE	Lee Trevino	Montwood	Fall/Winter 2019/20	2012 CO's	ARAPAHO	Geronimo	Marlow	Completed	2012 CO's
INTERNATIONAL	Robert E Lee	Airway	Fall/Winter 2019/20	2012 CO's	ALGONQUIN	Geronimo	Marlow	Completed	2012 CO's
BALSAM	Barker	Mimosa	Fall/Winter 2019/20	2012 CO's	STEPHENSON	Gateway East	Frederick	Completed	2012 CO's
BEN SWAIN	Toni	Edith	Fall/Winter 2019/20	2012 CO's	WOODALL	Blackwood	Suewood	Completed	2012 CO's
DOWNUM	McCabe	Darlina	Fall/Winter 2019/20	2012 CO's	MERIL	Cardigan	Darin	Completed	2012 CO's
MONTROSE	Mc Crae	Dead End	Fall/Winter 2019/20	2012 CO's	TRINITY	Rusk	Simpia	Completed	2012 CO's
CESSNA	Sunglow	W H Burges	Fall/Winter 2019/20	2012 CO's	HOLIDAY	Tampa	Welch	Completed	2012 CO's
FRANK BEARD	Sam Snead	Anise	Fall/Winter 2019/20	2012 CO's	VIOLET	W H Burges	Cessna	Completed	2012 CO's
LARRY MAHAN	Gateway West	Viscount	Fall/Winter 2019/20	2012 CO's	SHELL	Montana	Dead End	Completed	2012 CO's
DERICK	Carnegie	Montana	Fall/Winter 2019/20	2012 CO's	AVALON	Sunglow	Dead End	Completed	2012 CO's
GEORGE DIETER	Montana	Montwood	Fall/Winter 2019/20	Arterials	SURETY	Gateway East	Clark	Completed	2012 CO's
HAWKINS	Merchant/Gazelle	North Loop/Gateway	Summer/Fall 2019	Arterials	HILLER	Airport	Boeing	Completed	2012 CO's
VISCOUNT	Airway	Hawkins	Summer/Fall 2019	Arterials	TURRENTINE	Glengarry	Daugherty	Completed	2012 CO's
CORNWALL	Castletown	Blackwood	Completed	2012 CO's	PRESTWICK	Cosmos	Kilmaltie	Completed	2012 CO's
JOSHUA	Durrill	Dead End	Completed	2012 CO's	CLEVELAND	Paisano	Marlow	Completed	2012 CO's
LETTIE	Ben Swain	Edith	Completed	2012 CO's	HAWICK	Dunoon	Mcintosh	Completed	2012 CO's
FLINT	Polo Inn	Polo Inn	Completed	2012 CO's	WADE	Cosmos	Lait	Completed	2012 CO's
PEARL	Amethyst	Dead End	Completed	2012 CO's	FIRESTONE	Montana	Darin	Completed	2012 CO's
J C CRAMER	Barker	Coronado	Completed	2012 CO's	NAVAJO B	Apache	Cheyenne Trail	Completed	2012 CO's
HAWAII	Yuma	Phoenix	Completed	2012 CO's	CHIP CHIP	Alameda	Dead End	Completed	2012 CO's
PEAR TREE	George Orr	C R Croom	Completed	2012 CO's	GREEN VALLEY	Carolina	Dead End	Completed	2012 CO's
PEACH TREE	George Orr	C R Croom	Completed	2012 CO's	MIDWAY	Knights	Hockney	Completed	2012 CO's
ALASKA	Yuma	Phoenix	Completed	2012 CO's	VOCATIONAL	Mimosa	Alameda	Completed	2012 CO's
ABRAHAM	Alameda	Canary	Completed	2012 CO's	MCCARTHY	Hockney	Alameda	Completed	2012 CO's
SHETLAND	Edgemere	Ballymote	Completed	2012 CO's	YARBROUGH	Montana	Cesar Chaves	Completed	Arterials
COCONUT TREE	Granite	Coconut Tree	Completed	2012 CO's	BALLYMOTE	Orkney	Karen	Completed	Residential
GRANITE	George Orr	Polo Inn	Completed	2012 CO's	BAYO	Orkney	Karen	Completed	Residential
RED ROBIN	Canary	George Orr	Completed	2012 CO's	BLACKWOOD	Cornwall	Yarbrough	Completed	Residential
EDITH	Little Flower	Ben Swain	Completed	2012 CO's	CASTLETOWN	Edgemere	Limerick	Completed	Residential
HARDY	Tampa	Dulaney	Completed	2012 CO's	DRUMOND	Castletown	Ballymote	Completed	Residential
CIBOLA	Clark	Marlow	Completed	2012 CO's	LAMPLITER	Ballymote	CDS	Completed	Residential
ASH	Dempsey	W H Burges	Completed	2012 CO's	LIMERICK	Castletown	Ballymote	Completed	Residential
LEAR	Boeing	Lockheed	Completed	2012 CO's	LORNE	Castletown	Ballymote	Completed	Residential
GOURD	Album	Bellis	Completed	2012 CO's	LUELLA	Orkney	Karen	Completed	Residential
UTE	Clark	Marlow	Completed	2012 CO's	SALLYBROOK	Edgemere	Ballymote	Completed	Residential
BRANDWOOD	Blackwood	Suewood	Completed	2012 CO's	SUFFOLK	Castletown	Ballymote	Completed	Residential
KAYWOOD	Parkwood	Saigon	Completed	2012 CO's	TYRONE	Castletown	Ballymote	Completed	Residential
PAPAGO	Clark	Marlow	Completed	2012 CO's					

Completed – 63  
Programmed - 14



# District 4

Location	From	To	Status	Program	Location	From	To	Status	Program
DEER	McCombs	Cross	Summer/Fall 2019	2012 CO's	KISKA	Prince Edward	Edmonton	Completed	2012 CO's
YOSEMITE	Zion	Old Spanish Trail	Completed	2012 CO's	WOODCHUCK	Bomarc	Dead End	Completed	2012 CO's
LLANO	Hueco Vista	Terminus	Completed	2012 CO's	POTOMAC	Pheasant	Quail	Completed	2012 CO's
HUECO VISTA	Alabama	Dead End	Completed	2012 CO's	BOBCAT	Bomarc	Dead End	Completed	2012 CO's
ZEUS	Nike	Snark	Completed	2012 CO's	RAVEN	Bomarc	Dead End	Completed	2012 CO's
DUVAL	Marie Tobin	Hondo Pass	Completed	2012 CO's	WALDORF	McCombs	Alcan	Completed	2012 CO's
DOWNS	Fairfax	Raleigh	Completed	2012 CO's	ABILENE	Cermac	Shenandoah	Completed	2012 CO's
MACKEREL	Will Ruth	Dead End	Completed	2012 CO's	PARADISE	Alcan	Tropicana	Completed	2012 CO's
PERSIMMON	Marie Tobin	Hondo Pass	Completed	2012 CO's	UVALDE	Sun Valley	Junction	Completed	2012 CO's
OLAN	Fairfax	Roanoak	Completed	2012 CO's	LEVELLAND	Sweetwater	Port Arthur	Completed	2012 CO's
AJAX	Crenshaw	Tropicana	Completed	2012 CO's	JUNCTION	Kellogg	Gateway South	Completed	2012 CO's
SANDERS	Pistacio	Dyer	Completed	2012 CO's	MENZIES	Winthrop	Sun Valley	Completed	2012 CO's
SINCLAIR	Tivoli	Terminus	Completed	2012 CO's	PEACOCK	Rushing	Saxon	Completed	2012 CO's
VANGUARD	Pickerel	Dead End	Completed	2012 CO's	TRIUMPH	Salem	Dearborne	Completed	2012 CO's
MIDDLESBORO	Waverly	McCombs	Completed	2012 CO's	CURLEW	Debeers	Tropicana	Completed	2012 CO's
NIKE	Sidewinder	Dead End	Completed	2012 CO's	PORT ARTHUR	Sweetwater	Murphy	Completed	2012 CO's
VERBENA	Threadgill	McCombs	Completed	2012 CO's	FERTELL	Sun Valley	Grouse	Completed	2012 CO's
MACAW	McCombs	Blue Wing	Completed	2012 CO's	SHENANDOAH	Thor	Debeers	Completed	2012 CO's
GULFPORT	Salisbury	Raleigh	Completed	2012 CO's	TROPICANA	Alcan	McCombs	Completed	2012 CO's
DECATUR	Vicksburg	Railroad	Completed	2012 CO's	TIVOLI	Deer	Quail	Completed	2012 CO's
FALCON	Mc Combs	Railroad	Completed	2012 CO's	PONDEROSA	Palomino	Dead End	Completed	2012 CO's
DALTON	Salisbury	Raleigh	Completed	2012 CO's	DEARBORNE	Mackinaw	McCombs	Completed	2012 CO's
ROANOKE	Joe Herrera	Hondo Pass	Completed	2012 CO's	MC COMBS SERVICE	Sarah Anne	Sun Valley	Completed	2012 CO's
VICKSBURG	Threadgill	Sanders	Completed	2012 CO's	KETCHIKAN	Prince Edward	Newcastle	Completed	2012 CO's
YELLOWSTONE	Tropicana	Blythe	Completed	2012 CO's	ALCAN	Warren	Fairbanks	Completed	2012 CO's
PICKEREL	Marlin	McCombs	Completed	2012 CO's	DEBEERS	Ambassador	Mackinaw	Completed	2012 CO's
MAUREEN	Stahala	Gabriel	Completed	2012 CO's	VICEROY	Dearborne	Dead End	Completed	2012 CO's
RAYMOND TELLES	Alps	Joe Herrera	Completed	2012 CO's	KELLOGG	Winthrop	Tropicana	Completed	2012 CO's
TIGER EYE	Dyer	Jadestone	Completed	2012 CO's	SIGMA	Sagittarius	Dead End	Completed	2012 CO's
FAIRFAX	Threadgill	Dalton	Completed	2012 CO's	SALEM	Rushing	McCombs	Completed	2012 CO's
HOLLINGS	Wren	Hondo Pass	Completed	2012 CO's	MCCOMBS	Dyer	Railroad	Completed	Arterials
WINTHROP	Kenworthy	Thor	Completed	2012 CO's	RAILROAD	Loop 375	US 54	Completed	Arterials
MURPHY	Salem	Sean Haggerty	Completed	2012 CO's	AMBASSADOR	Kenworthy	Kellogg	Completed	Residential
REGULUS	Mc Combs	Bomarc	Completed	2012 CO's	CAPISTRANO	Cavalier	Mackinaw	Completed	Residential
SAGITTARIUS	Rushing	Kenworthy	Completed	2012 CO's	CAVALIER	Donald	Sun Valley	Completed	Residential
THREADGILL	Dyer	McCombs	Completed	2012 CO's	CERMAC	Debeers	Abiline	Completed	Residential
RUTHERFORD	Stahala	Dyer	Completed	2012 CO's	CHEROKEE	Redwood	Mc Combs	Completed	Residential
MATTERHORN	Rutherford	Glacier Peak	Completed	2012 CO's	COMMODORE	Donald	Sun Valley	Completed	Residential
MOUNT ETNA	Rutherford	Glacier Peak	Completed	2012 CO's	EL CAMPO	Kenworthy	Kellogg	Completed	Residential
MOUNT SAN BERDU	Joe Herrera	Alps	Completed	2012 CO's	HARCOURT	Kenworthy	Kellogg	Completed	Residential
MOUNT OLYMPUS	Joe Herrera	Glacier Peak	Completed	2012 CO's	HOLLYHOCK	Donald	Sun Valley	Completed	Residential
CRENSHAW	Yellowstone	Tropicana	Completed	2012 CO's	HUGG	Donald	Capistrano	Completed	Residential
BLYTHE	Yellowstone	Winthrop	Completed	2012 CO's	MACKINAW	Donald	Sun Valley	Completed	Residential
THOR	Crenshaw	Winthrop	Completed	2012 CO's	ROLLING STONE	Kenworthy	Kellogg	Completed	Residential
SARAH ANNE	McCombs	Terminus	Completed	2012 CO's	ROYAL	Yellowstone	Shennandoah	Completed	Residential
JOHN CUNNINGHAM	MLK	Terminus	Completed	2012 CO's	SHENANDOAH	Debeers	Fairbanks	Completed	Residential
GRAND CANYON	Zion	Old Spanish	Completed	2012 CO's	STRAIN	Shennandoah	CDS	Completed	Residential
OLD SPANISH TRAIL	Zion	Dead End	Completed	2012 CO's	TROPICANA	Kenworthy	Cermac	Completed	Residential
ZION	Alabama	Gran Quivera	Completed	2012 CO's	TUMBLEWEED	Kenworthy	Kellogg	Completed	Residential
TROUT	Wolverine	Dead End	Completed	2012 CO's	WHYBURN	Donald	Capistrano	Completed	Residential
WOODBERRY	Mc Combs	Dead End	Completed	2012 CO's					

Completed – 100  
In progress – 1

Deer street to be  
paved after  
completion of NTMP  
project

# District 5

Completed - 1  
Programmed - 14

Location	From	To	Status	Program
HICKMAN	Quintana	Edgemere	Fall/Winter 2019	Residential
IVANHOE	Quintana	Edgemere	Fall/Winter 2019	Residential
PEACEPIPE	Running Deer	CDS	Fall/Winter 2019	Residential
PROUD EAGLE	Breckenridge	Quintana	Fall/Winter 2019	Residential
QUANAH	Quintana	Edgemere	Fall/Winter 2019	Residential
QUINTANA	Red Sails	Edgemere	Fall/Winter 2019	Residential
RED HAWK	Spotted Horse	Proud Eagle	Fall/Winter 2019	Residential
RISNER	Quintana	Edgemere	Fall/Winter 2019	Residential
RUNNING DEER	Breckenridge	Edgemere	Fall/Winter 2019	Residential
SPOTTED HORSE	War Feather	Edgemere	Fall/Winter 2019	Residential
TENAHA	Hazel Time	George Dieter	Fall/Winter 2019	Residential
WAR ARROW	Quintana	Edgemere	Fall/Winter 2019	Residential
WAR FEATHER	Running Deer	Proud Eagle	Fall/Winter 2019	Residential
GEORGE DIETER	Montana	Montwood	Fall/Winter 2019	Arterials
LEE	Montwood	Pebble Hills	Completed	2012 CO's

- Redistricting after the 2012 CIP was approved affected present District 5 street projects
- George Dieter is in the arterial street program; PSB is completing a water line replacement project outside of our project limits – we will let them complete work before starting resurfacing to avoid additional obstructions for commuters

# District 6

Completed – 10  
Programmed - 15

Location	From	To	Status	Program
BILLIE MARIE	Gene Sarazen	Robert Wynn	Fall/Winter 2019	Residential
BOB MITCHELL	Robert Wynn	George Dieter	Fall/Winter 2019	Residential
BUNKY HENRY	Russ Randall	George Dieter	Fall/Winter 2019	Residential
FRED MARTI	Billie Marie	George Dieter	Fall/Winter 2019	Residential
GENE SARAZEN	Robert Wynn	George Dieter	Fall/Winter 2019	Residential
JACK CUPIT	Russ Randall	George Dieter	Fall/Winter 2019	Residential
JAMES GRANT	Robert Wynn	George Dieter	Fall/Winter 2019	Residential
JERRY ABBOTT	Trawood	Bob Mitchell	Fall/Winter 2019	Residential
PAUL MORAN	Trawood	Bunky Henry	Fall/Winter 2019	Residential
RANDY PETRI	Billie Marie	George Dieter	Fall/Winter 2019	Residential
ROBERT WYNN	Trawood	George Dieter	Fall/Winter 2019	Residential
RON CERRUDO	Trawood	Bunky Henry	Fall/Winter 2019	Residential
RUSS RANDALL	Trawood	Bob Mitchell	Fall/Winter 2019	Residential
STEVE SPRAY	James Grant	Robert Wynn	Fall/Winter 2019	Residential
TOM ULOZAS	Robert Wynn	George Dieter	Fall/Winter 2019	Residential
ROJAS	George Dieter	Don Haskins	Sub Completed	Arterials
PULLMAN D	Henry Brennan	Rojas	Completed	2012 CO's
DORSET	Coventry	Dead End	Completed	2012 CO's
ONATE	Candelaria	Dead End	Completed	2012 CO's
SANTA ROSALIA	Southside	Guadalajara	Completed	2012 CO's
RENO	Southside	Guadalajara	Completed	2012 CO's
NEVAREZ A	Inglewood	Skylight	Completed	2012 CO's
GOLONDRINA	Buena Park	Buena Park	Completed	2012 CO's
GUADALAJARA	Singh	Reno	Completed	2012 CO's
LONE STAR	Socorro	Padilla	Completed	2012 CO's

Redistricting after the 2012 CIP was approved affected District 6 street projects

Rojas paved and pending stripping and concrete monument aprons

# District 7

Completed – 51  
Programmed – 24

Location	From	To	Status	Program	Location	From	To	Status	Program
ALCAZAR	Lomaland	Dead End	Fall 2019	2012 CO's	FRAY	Willamette	Dead End	Completed	2012 CO's
ALLEN BRADLEY	James Watt	Wilkenson	Fall 2019	2012 CO's	GALLAGHER	Heid	Mauer	Completed	2012 CO's
CORK	Album	Zanzibar	Fall 2019	2012 CO's	GUAYMAS	Taxco	Corozal	Completed	2012 CO's
DALE DOUGLAS	Bob Mitchell	Vista del Sol	Fall 2019	2012 CO's	HACIENDA	Hunter	Ameca	Completed	2012 CO's
TOMWOOD	Sumac	Trawood	Fall 2019	2012 CO's	HALF MOON	North Loop	North Loop	Completed	2012 CO's
VISTA LOMAS	Vista De Oro	Vista del Sol	Fall 2019	2012 CO's	HAROLD	Starr	Dead End	Completed	2012 CO's
VISTA REAL	Trawood	Janway	Fall 2019	2012 CO's	HERMOSILLO	Hunter	Yarbrough	Completed	2012 CO's
LOMALAND	Pellicano	Gateway East	Summer 2019	2012 CO's	HONOLULU	Montwood	Leewood	Completed	2012 CO's
MONACO	Montwood	Woodside	Summer 2019	2012 CO's	INDEPENDENCE	Yarbrough	Whittier	Completed	2012 CO's
CRESTWOOD	Park Haven	Drugan	Winter/Spring 2020	Residential	LA GENTE	Morelia	Dead End	Completed	2012 CO's
DELL HAVEN	Borett	Pinewood	Winter/Spring 2020	Residential	LA PALOMA	Valley View	Valley View	Completed	2012 CO's
DRUGAN	Borrett	Moorehead	Winter/Spring 2020	Residential	LA PAZ	Corozal	Dead End	Completed	2012 CO's
FOREST HAVEN	Borett	Pinewood	Winter/Spring 2020	Residential	LADERA	Monterrey	Carolina	Completed	2012 CO's
GLEN HAVEN	Borett	Saint Marys	Winter/Spring 2020	Residential	LEE TREVINO	Gateway East	Yermoland	Completed	2012 CO's
LYNN HAVEN	Borett	Saint Marys	Winter/Spring 2020	Residential	LILAC	Carolina	Montecito	Completed	2012 CO's
MOORELAND	Park Haven	Reindeer	Winter/Spring 2020	Residential	MAZATLAN	Hunter	Ladera	Completed	2012 CO's
MORERAS	Naranjos	Naranjos	Winter/Spring 2020	Residential	MONTERREY	Giles	Yarbrough	Completed	2012 CO's
NARANJOS	Saint Marys	Reindeer	Winter/Spring 2020	Residential	NEW HAVEN	Lasso	Roseway	Completed	2012 CO's
PARK HAVEN	Borrett	Naranjos CDS	Winter/Spring 2020	Residential	NEWLAND	Stanley	Atwood	Completed	2012 CO's
PINEWOOD	Park Haven	Reigndeer	Winter/Spring 2020	Residential	POLVO	Ron Quillo	Dead End	Completed	2012 CO's
REINDEER	Borrett	Naranjos CDS	Winter/Spring 2020	Residential	RALPHEENE	Williamette	Yermoland	Completed	2012 CO's
ROSE HAVEN	Borett	Pinewood	Winter/Spring 2020	Residential	RIO ARRIBA	Pedernales	Link	Completed	2012 CO's
SAINT MARYS	North Loop	Lasso	Winter/Spring 2020	Residential	ROJAS	Pendale	George Dieter	Completed	2012 CO's
SAINT MATTHEWS	North Loop	Park Haven	Winter/Spring 2020	Residential	ROSEMARY	San Jose	Wenda	Completed	2012 CO's
ALGERITA	Riverside	Hickory	Completed	2012 CO's	SAN PAULO	La Paz	Yarbrough	Completed	2012 CO's
ALGIERS	Fir	Album	Completed	2012 CO's	SANTA BARBARA	Mazatlan	Hacienda	Completed	2012 CO's
AMUR	Danube	Arboleda	Completed	2012 CO's	SANTA MARIA	Giles	Dead End	Completed	2012 CO's
ARAQUAIA	Arboleda	Dead End	Completed	2012 CO's	SANTA MONICA	Giles	Venado	Completed	2012 CO's
ATKINSON	North Loop	Half Moon	Completed	2012 CO's	SONORA	Veracruz	Dead End	Completed	2012 CO's
BORRETT	Wells	Dead End	Completed	2012 CO's	SUMATRA	Ceylon	Album	Completed	2012 CO's
BURGESS	Yermoland	Courtland	Completed	2012 CO's	TAHITI	Heather	Bermuda	Completed	2012 CO's
BURNHAM	Stanley	Lomaland	Completed	2012 CO's	TRANQUILO	Yarbrough	Dead End	Completed	2012 CO's
CAPELLO	Blacks	McCamey	Completed	2012 CO's	VAN HASELEN	Lasso	Pendale	Completed	2012 CO's
CHRISTY	Williamette	Yermoland	Completed	2012 CO's	VENADO	Ranchland CDS	San Paulo	Completed	2012 CO's
COSMOS	McRae	Debbie	Completed	2012 CO's	VERACRUZ	Ladera	Giles	Completed	2012 CO's
EMERSON	Heid	North Loop	Completed	2012 CO's	WENDA	Franklin	San Jose	Completed	2012 CO's
FINITA	Whittier	Alameda	Completed	2012 CO's	YARBROUGH	North Loop	Alameda	Completed	2012 CO's
FRANCINE	Williamette	Yermoland	Completed	2012 CO's					



# District 8

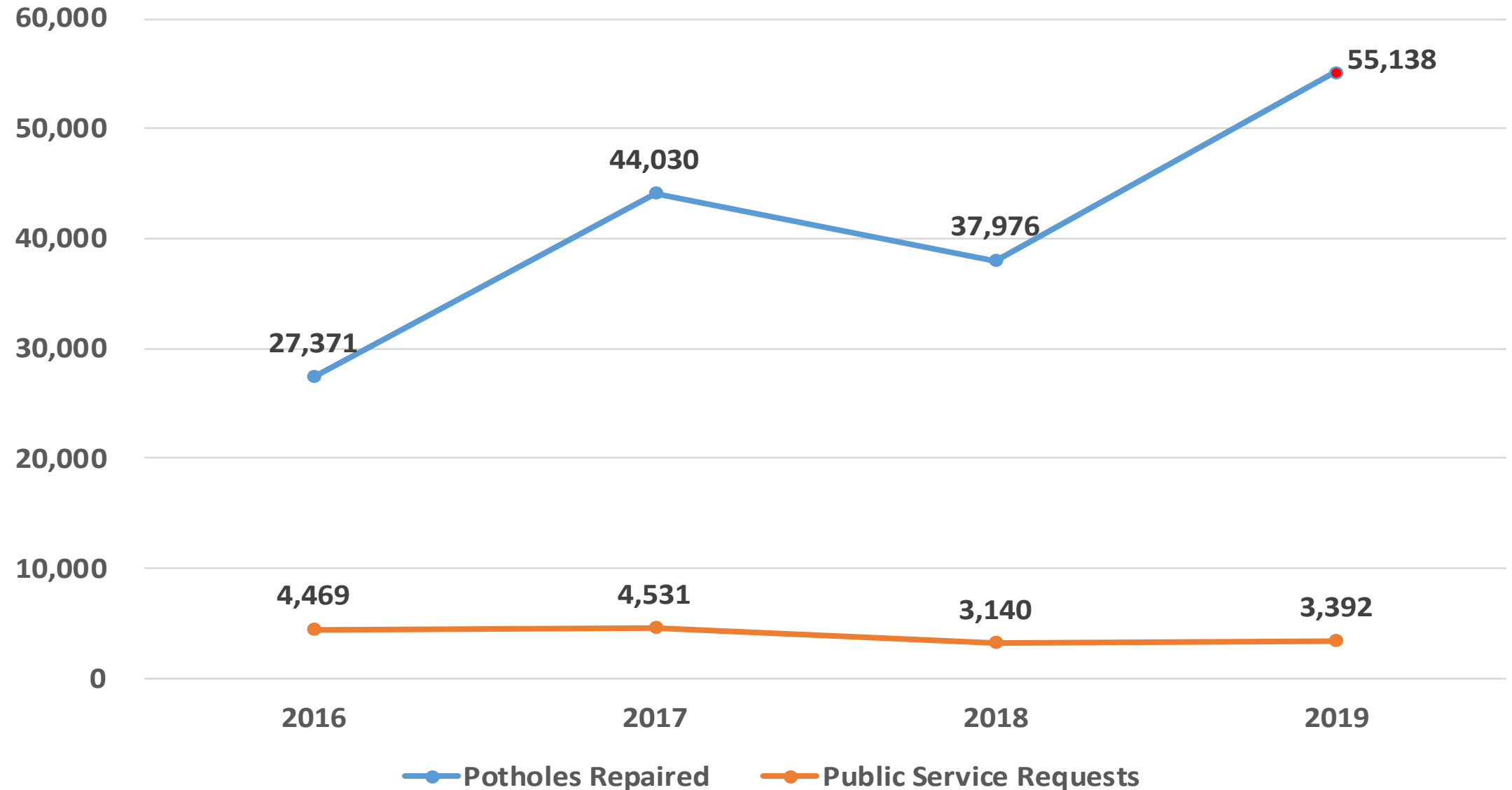
Completed – 39  
Programmed - 27

Location	From	To	Status	Program	Location	From	To	Status	Program
BOONE	Alameda	Rivera	Summer/Fall 2020	Residential	WESTCITY	Eubank	Waymore	Completed	2012 CO's
CENTRAL	Paisano	Piedras	Summer/Fall 2020	Residential	PALO VERDE	Maguey	Rio Flor	Completed	2012 CO's
CYPRESS	Piedras	Paisano	Summer/Fall 2020	Residential	LESLIE WARD	Boy Scout	Dead End	Completed	2012 CO's
HAMMETT	Frutas	Alameda	Summer/Fall 2020	Residential	THRUSH	Warbler	Crane	Completed	2012 CO's
MAGOFFIN	Eucalyptus	Piedras	Summer/Fall 2020	Residential	SILVERBELL	Kingswood	Dead End	Completed	2012 CO's
PERA	Magoffin	Alameda	Summer/Fall 2020	Residential	COLUMBINE	Country Club	Camino Real	Completed	2012 CO's
RIVERA	Gateway North	Boone	Summer/Fall 2020	Residential	J C MACHUCA	Sunland Park	Dead End	Completed	2012 CO's
SAN ANTONIO	Piedras	Copia CDS	Summer/Fall 2020	Residential	CHARLANN	Shorty	Sunset	Completed	2012 CO's
RIVER BEND	Frontera	Sunset	Pending CID Project	2012 CO's	BALLERINA	Sunset	Dead End	Completed	2012 CO's
NINTH	Park	Campbell	Winter/Spring 2020	2012 CO's	GEORGIA	Cliff	Dead End	Completed	2012 CO's
COMANCHE	Tobin	Cortez	Winter/Spring 2020	2012 CO's	POPLAR	Pershing	Missouri	Completed	2012 CO's
EIGHTH	Oregon	Ochoa	Winter/Spring 2020	2012 CO's	DETROIT	Murchison	Arizona	Completed	2012 CO's
DOLAN	Paisano	Sagrado	Winter/Spring 2020	2012 CO's	COLINA ALTA	Fountain	Dead End	Completed	2012 CO's
BIRCH	Grant	Wyoming	Winter/Spring 2020	2012 CO's	BENEDICT	Perth	Hookheath	Completed	2012 CO's
UPSON	Heisig	Stewart	Pending PSB Project	2012 CO's	HEISIG	Prospect	Sun Bowl	Completed	2012 CO's
FOURTH	Park	Coles	Winter/Spring 2020	2012 CO's	PACIFIC	Hidden	Doniphan	Completed	2012 CO's
FRANCIS	Flower	Terminus	Winter/Spring 2020	2012 CO's	WESTVIEW	Heath	Belton	Completed	2012 CO's
HOOKHEATH	Roxbury	Benedict	Pending PSB Project	2012 CO's	BEL MAR	Fiesta	Cabrillo	Completed	2012 CO's
DUNNE	Washington	Dead End	Winter/Spring 2020	2012 CO's	RUBIN	Suncrest	Corousel	Completed	2012 CO's
SAINT VRAIN	Olive	Dead End	Winter/Spring 2020	2012 CO's	MARDI GRAS	Carousel	Dad End	Completed	2012 CO's
CALIFORNIA	Mesa	Los Angeles	Winter/Spring 2020	2012 CO's	MONTOYA	Country Club	Medowlark	Completed	2012 CO's
BELTON	Monarch	De Leon	Winter/Spring 2020	2012 CO's	PERTH	Riverbend	Benedict	Completed	2012 CO's
FINDLEY	San Antonio	Dead End	Winter/Spring 2020	2012 CO's	ROSEWOOD	Arizona	Missouri	Completed	2012 CO's
LINDEN	Alameda	Dunne	Winter/Spring 2020	2012 CO's	MEADOWLARK	Vist Del Monte	Rosinante	Completed	2012 CO's
MARTINEZ	Delta	Laredo	Winter/Spring 2020	2012 CO's	COEUR D ALENE	Olmos	Coeur D Alene	Completed	2012 CO's
LAREDO	Boone	Dead End	Winter/Spring 2020	2012 CO's	FOUNTAIN	Snow Heights	Mesa	Completed	2012 CO's
RESLER	High Ridge	White Cliffs	Summer 2019	2012 CO's	VISTA GRANDE	Country Club	Country Club	Completed	2012 CO's
BRIARWOOD	Coeur D Alene	Sunset	Completed	2012 CO's	KINGSWOOD	Silverbell	Dead End	Completed	2012 CO's
AVILA	Lombardy	Avila	Completed	2012 CO's	DALLAS	San Antonio	Dead End	Completed	2012 CO's
CIRCUS	Mardi Gras	Dead End	Completed	2012 CO's	CASTILE	Belton	Marcena	Completed	2012 CO's
CORVENA	Swan	Fair Lawn	Completed	2012 CO's	OVERLAND	Cotton	Campbell	Completed	2012 CO's
BLACKSTONE	Roxbury	Frontera	Completed	2012 CO's	POPLAR	Grant	School gates	Completed	2012 CO's
CORTO	Yandell	Prospect	Completed	2012 CO's	SANTA FE	I-10	Main	Completed	2013 CO's

## Pothole Patching Update

# Pothole Patching Update - Through End of July

41



# THANK YOU