



Top 25 Arterial Improvements Rollout

August 21, 2018



"Delivering Outstanding Services"



Top 25 Improvements Rollout

Background

Strategic Investments

- Improve roadway safety and visibility with arterial lighting installation
- Promote walkability, bicycling, mass transit, and traffic calming/reduced traffic speeds with increased street trees and landscaping
- Enhance economic opportunities with lighting and landscaping on major arterials
- Focus on high-level landscaping on corridors serving as the City's gateways into neighborhoods and main commercial areas
- Improve the visual image of the community along the City's most heavily traveled corridors maximizing the impact of the City's dollars within the community



Top 25 Improvements Rollout

Top 25 Most Traveled Roadways

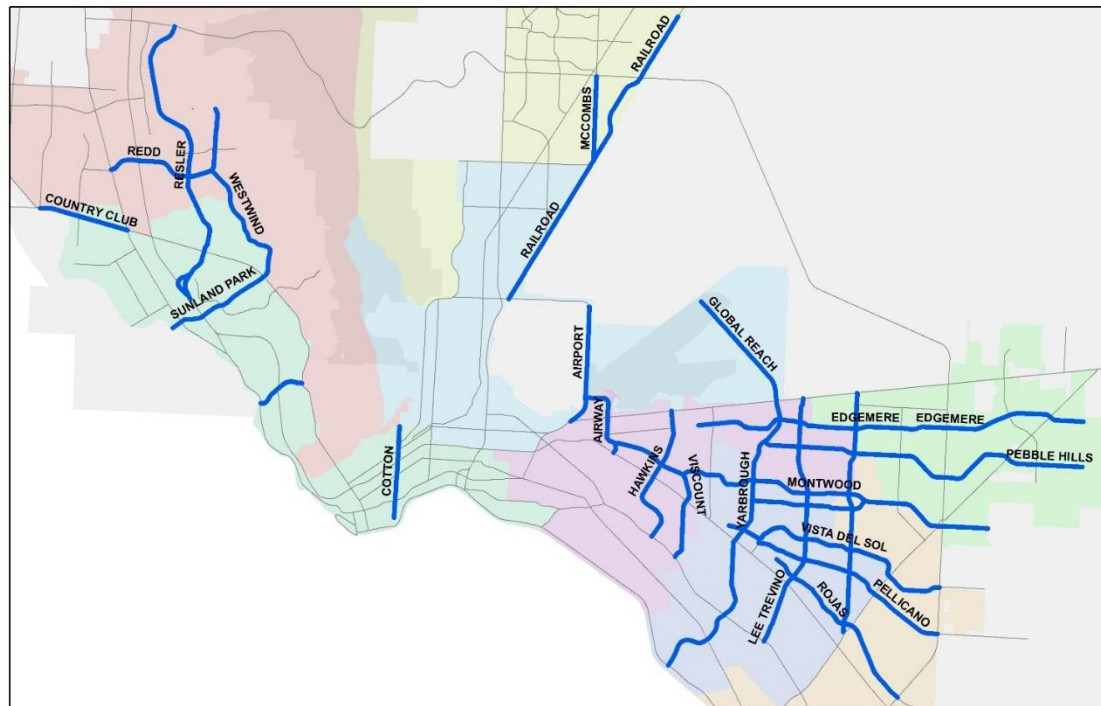
Traffic Volume Rank	Street Name	District
1	SUNLAND PARK	8
2	GEORGE DIETER	3, 5, 6, 7
3	LEE TREVINO	3, 7
4	SHADOW MTN/WESTWIND	1, 8
5	RESLER	1, 8
6	AIRWAY	3
7	GLOBAL REACH	2
8	YARBROUGH	3, 7
9	REDD	1
10	PELLICANO	6, 7
11	MONTWOOD	3, 5, 6, 7
12	RAILROAD	2, 4
13	COUNTRY CLUB	1, 8

Traffic Volume Rank	Street Name	District
14	PEBBLE HILLS	3, 5, 6
15	HAWKINS	3
16	AIRPORT	2, 3
17	VISCOUNT	3
18	EXECUTIVE CENTER	8
19	VISTA DEL SOL	6, 7
20	COTTON	1, 2, 8
21	EDGEMERE	3, 5
22	HUNTER	3, 7
23	MCCOMBS	4
24	TRAWOOD	6, 7
25	ROJAS	6, 7



Top 25 Improvements Rollout

Corridors



The features represented on this map are in the Texas State Plane Coordinate system, Central Zone, NAD 83, units feet, using the Lambert Conformal Conic projection.
This map was generated using ArcGIS by the Capital Improvement Department, Planning Division of the City of El Paso, Texas.
218 N. Campbell St. El Paso, Texas, 79901
915-212-2055
This map is designed for illustrative purposes only. The features depicted here are approximate and more site-specific studies may be required to draw accurate conclusions. Enlargements of this map to scales greater than its original can induce errors and may lead to misinterpretation of the data. The Capital Improvement Department makes no claim to its accuracy or completeness.



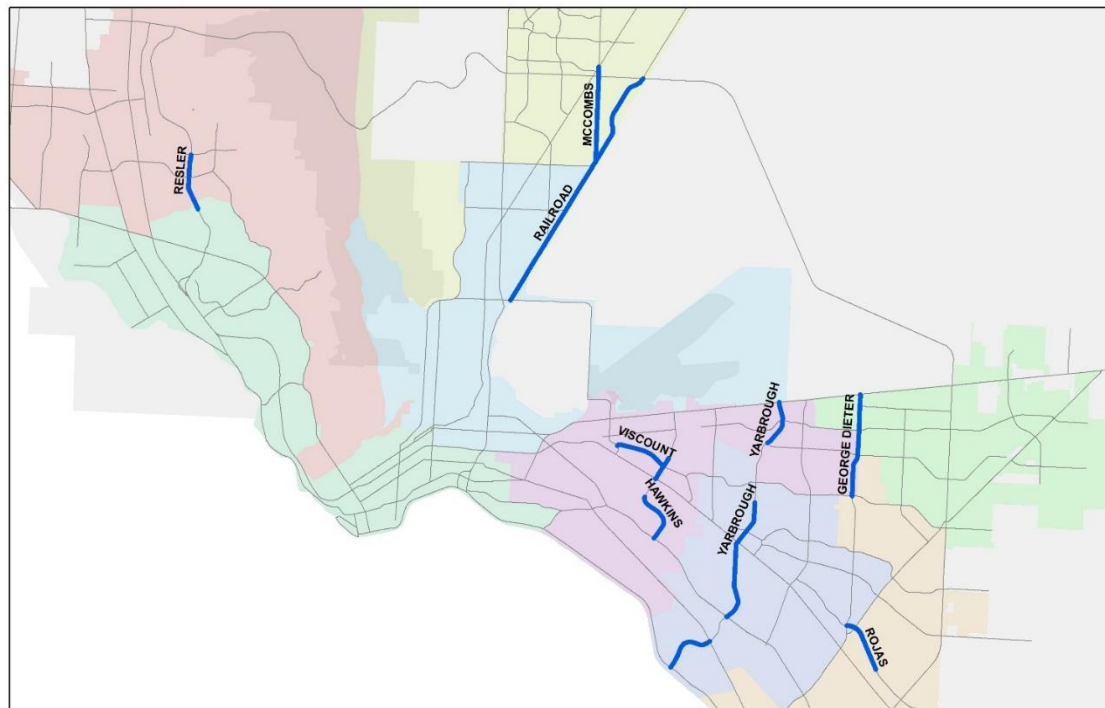
City of El Paso
Top 25 Most Traveled Roadways

0 1.25 2.5 5 7.5 10 Miles



Top 25 Improvements Rollout

Resurfacing Corridors



The features represented on this map are in the Texas State Plane Coordinate system, Central Zone, NAD 83, units feet, using the Lambert Conformal Conic projection.
This map was generated using ArcGIS by the Capital Improvement Department-Planning Division of the City of El Paso, Texas.
215 N. Campbell St. El Paso, Texas, 79901
815.212.2665
This map is designed for illustrative purposes only. The features depicted here are approximate and more site-specific studies may be required to draw accurate conclusions. Enlargements of this map to scales greater than its original can induce errors and may lead to misinterpretations of the data. The Capital Improvement Department makes no claim to its accuracy or completeness.



City of El Paso
Arterial Resurfacing

0 1.25 2.5 5 7.5 10 Miles

\$21.6 million
currently under
contract



Top 25 Improvements Rollout

Background

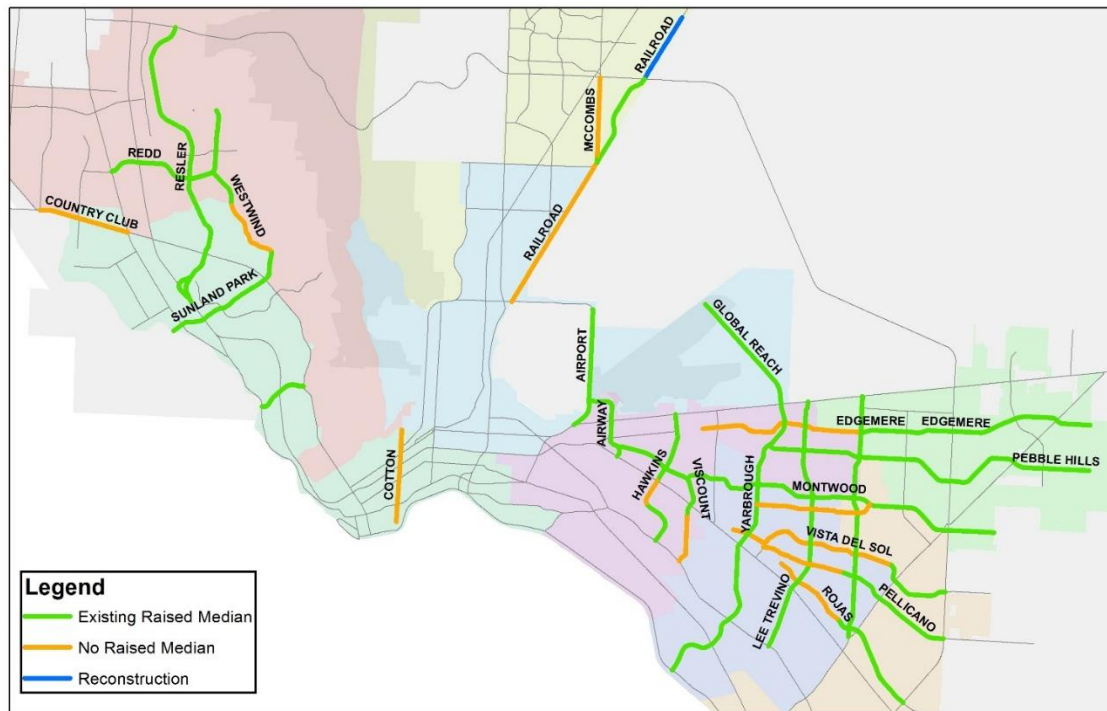
Analysis of Top 25 Corridors

- Identifying roadway segments that:
 - Currently do not have arterial lighting to bring these closer to meeting code requirements
 - Provide opportunities to improve and enhance the existing raised medians with landscaping in key City corridors
 - Landscape improvements were selected in areas where unimproved raised medians existed
 - Roadway segments with no existing raised medians were not considered for inclusion into the program



Top 25 Improvements Rollout

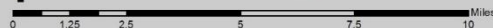
Median Status



The features represented on this map are in the Texas State Plane Coordinate system, Central Zone, NAD 83, units feet, using the Lambert Conformal Conic projection.
This map was generated using ArcGIS by the Capital Improvement Department-Planning Division of the City of El Paso, Texas.
216 N. Campbell St., El Paso, Texas, 79901
915.512.0060
This map is designed for illustrative purposes only. The features depicted here are approximate and more site-specific studies may be required to draw accurate conclusions. Enlargements of this map to scales greater than its original can induce errors and may lead to misinterpretations of the data. The Capital Improvement Department makes no claim to its accuracy or completeness.



City of El Paso
Top 25 Most Traveled Roadways
Median Status





Top 25 Improvements Rollout

Current Conditions



Airport

"Delivering Outstanding Services"



Top 25 Improvements Rollout

Current Conditions



Resler



Top 25 Improvements Rollout

Existing Landscaping Examples





Top 25 Improvements Rollout

Existing Landscaping Examples





Top 25 Improvements Rollout

Existing Landscaping Examples



"Delivering Outstanding Services"



Top 25 Improvements Rollout

TxDOT funded projects

August 21, 2018 – Council consideration for construction contract for installation of landscaping on the following Top 25 corridors:

- Airway
- George Dieter
- Montwood
- Redd
- Resler

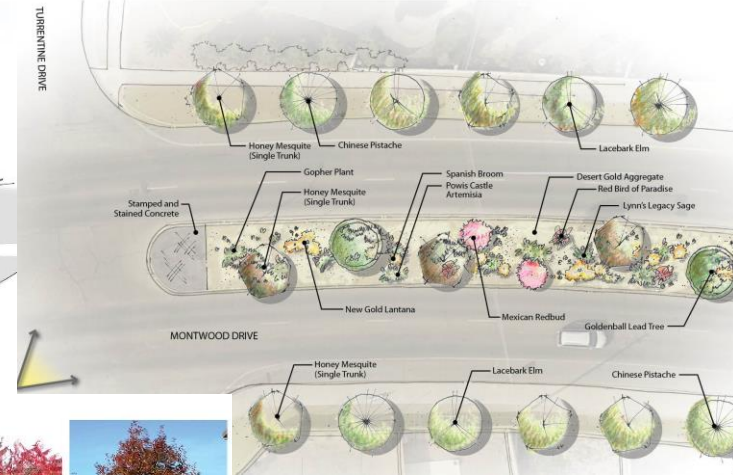


Top 25 Improvements Rollout

TxDOT funded projects



CONCEPTUAL DESIGN PERSPECTIVE RENDERING





Top 25 Improvements Rollout

2019 Capital Plan Projects

April 30, 2018 – Council approved \$57.3 million for arterial lighting and landscaping



"Delivering Outstanding Services"



Top 25 Improvements Rollout

Project Listing – 2019 Capital Plan

Street Name	Arterial Lighting	Landscaping	Total Cost
AIRPORT	\$487,500	\$876,400	\$1,363,900
COTTON	\$825,000	\$1,122,500	\$1,947,500
EDGEMERE	\$6,532,500	\$1,022,000	\$7,554,500
EXECUTIVE CENTER	\$337,500	\$515,000	\$852,500
GEORGE DIETER		\$1,267,000	\$1,267,000
HAWKINS	\$232,500		\$232,500
HUNTER	\$967,500	\$119,000	\$1,086,500
LEE TREVINO		\$630,000	\$630,000
MCCOMBS	\$1,372,500	\$105,000	\$1,477,500
PEBBLE HILLS		\$469,000	\$469,000
PELLICANO	\$3,412,500	\$1,423,800	\$4,836,300

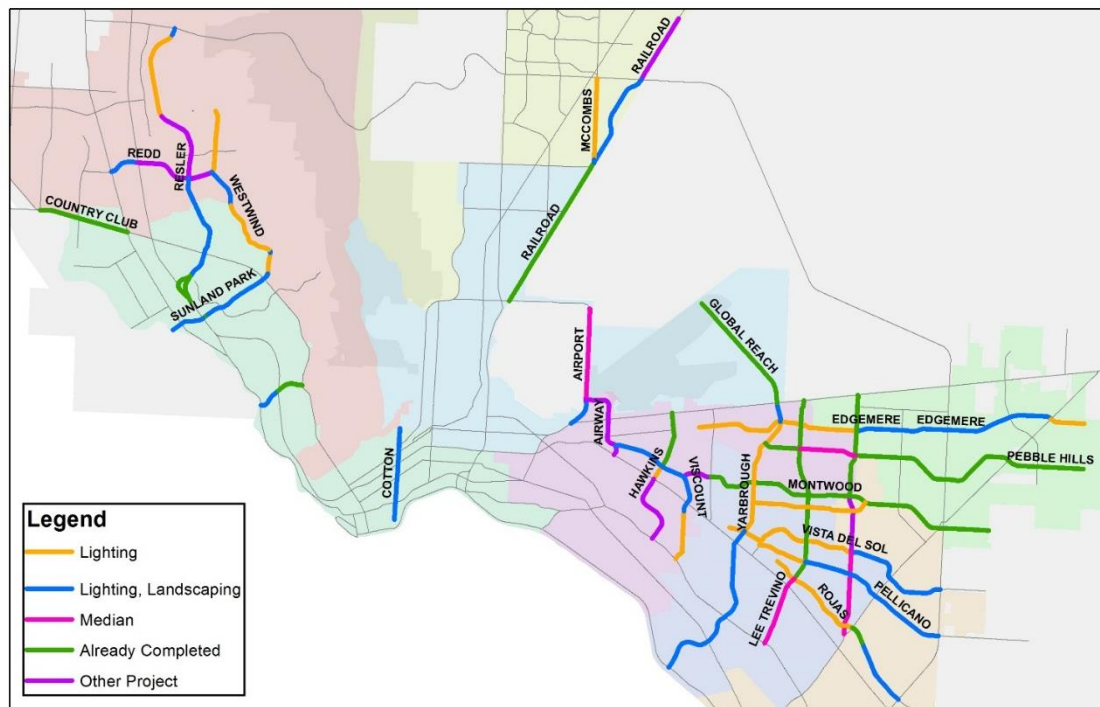
Street Name	Arterial Lighting	Landscaping	Total Cost
RAILROAD	\$1,627,500	\$1,017,730	\$2,645,230
REDD	\$1,950,000	\$648,000	\$2,598,000
RESLER	\$3,397,500	\$2,336,000	\$5,733,500
ROJAS	\$2,520,000	\$875,000	\$3,395,000
SHADOW MTN/WESTWIND	\$2,416,000	\$1,020,000	\$3,436,000
SUNLAND PARK	\$1,672,500	\$1,484,000	\$3,156,500
TRAWOOD	\$1,950,000		\$1,950,000
VISCOUNT	\$639,000	\$1,155,000	\$1,794,000
VISTA DEL SOL	\$4,042,500	\$896,000	\$4,938,500
YARBROUGH	\$3,924,700	\$1,968,750	\$5,893,450

Note: Lighting and/or median improvements to Airway, Country Club, Global Reach, and Montwood are either already completed or addressed by another project



Top 25 Improvements Rollout

2019 Capital Plan



The features represented on this map are in the Texas State Plane Coordinate system, Central Zone, NAD 83, units feet, using the Lambert Conformal Conic projection.
This map was generated using ArcGIS by the Capital Improvement Department Planning Division of the City of El Paso, Texas.
210 N. Campbell St., El Paso, Texas, 79901
915.212.1065
This map is designed for illustrative purposes only. The features depicted here are approximate and more site-specific studies may be required to draw accurate conclusions. Enlargements of this map to scales greater than its original can induce errors and may lead to misinterpretations of the data. The Capital Improvement Department makes no claim to its accuracy or completeness.



City of El Paso
Top 25 Most Traveled Roadways

0 1.25 2.5 5 7.5 10 Miles



Top 25 Improvements Rollout

Rollout

Rollout Factors

- Consideration regards to existing projects
- Focus was to start the most heavily traveled streets first
- Synchronizing the start of the projects in west El Paso with the completion of the TxDOT work



Top 25 Improvements Started by 2020

Rollout

Fall 2018 – Fall 2020

	Street
Phase 1	Cotton
	George Dieter
	Hawkins
	Lee Trevino
	Pellicano
	Railroad
	Redd (Ph 1)
	Viscount
	Yarbrough

Fall 2019 – Fall 2021

	Street
Phase 2	Airport
	Executive Center
	Pebble Hills
	Redd (Ph 2)
	Shadow Mtn/ Westwind
	Sunland Park
	Vista Del Sol

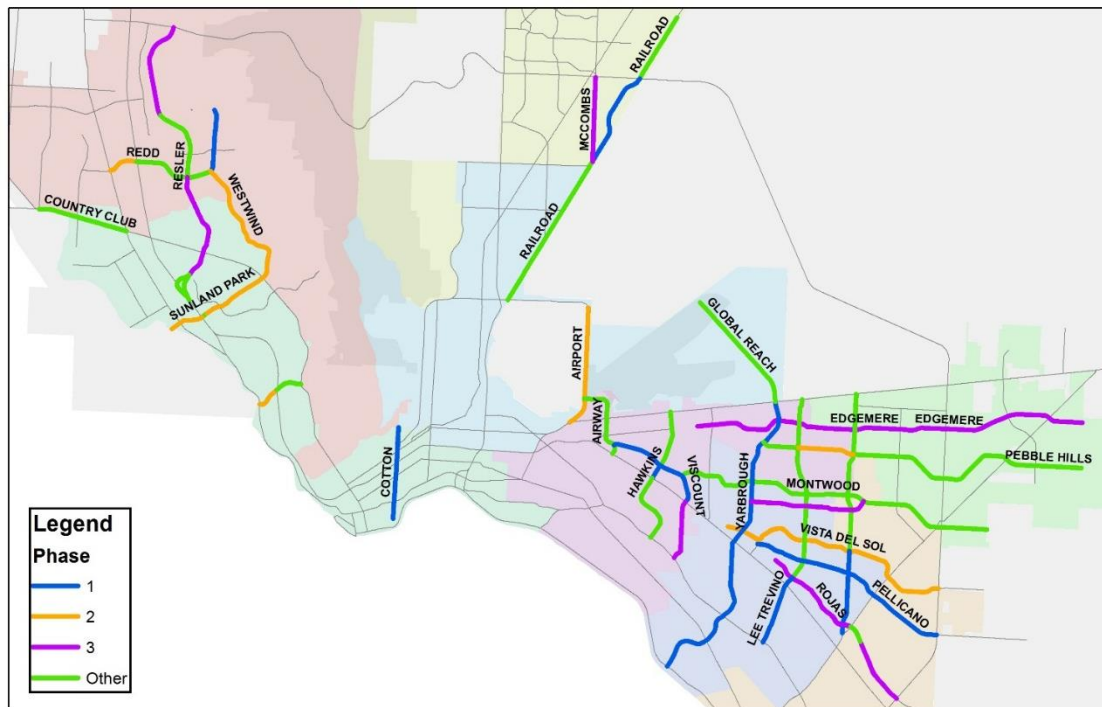
Fall 2020 – Fall 2022

	Street
Phase 3	Edgemere
	Hunter
	McCombs
	Resler
	Rojas
	Trawood



Top 25 Improvements Started by 2020

Rollout



The features represented on this map are in the Texas State Plane Coordinate system, Central Zone, NAD 83, units feet, using the Lambert Conformal Conic projection.
This map was generated using ArcGIS by the Capital Improvement Department, Planning Division of the City of El Paso, Texas.
218 N. Campbell St., El Paso, Texas, 79901
915-212-2055
This map is designed for illustrative purposes only. The features depicted here are approximate and more site-specific studies may be required to draw accurate conclusions. Enlargements of this map to scales greater than its original can induce errors and may lead to misinterpretation of the data. The Capital Improvement Department makes no claim to its accuracy or completeness.



City of El Paso
Top 25 Most Traveled Roadways

0 1.25 2.5 5 7.5 10 Miles



THANK YOU