



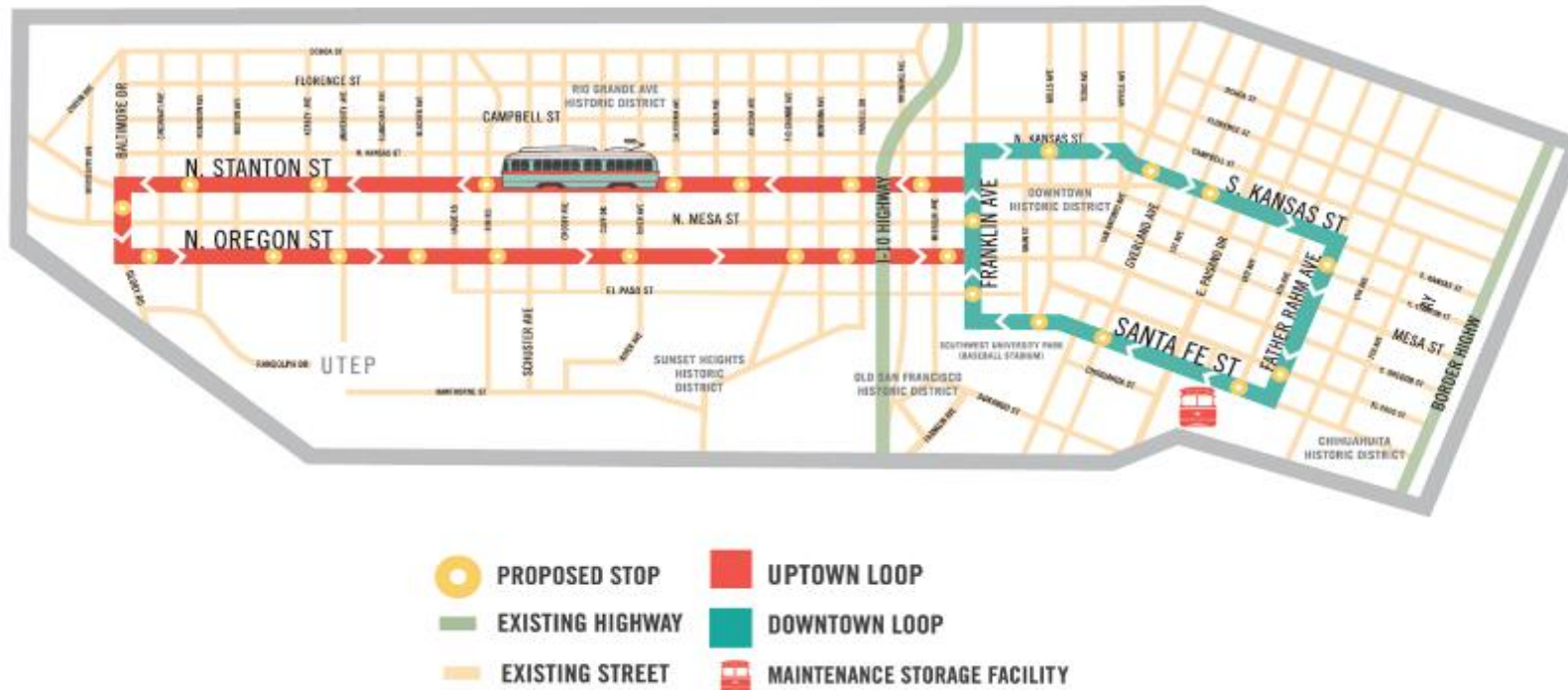
El Paso Streetcar Transition Update

City Council Meeting
Aug 21, 2018



El Paso Streetcar Project

EL PASO STREETCAR OFFICIAL ROUTE





Construction Update



Coordination with FTA/TxDOT State Safety Oversight Agency

- SSOA submitted their Safety and Security Readiness Review report on May 1 to EP Streetcar staff
- Sun Metro is preparing Standard Operating Procedures for review by the SSOA
- Vital Assurance will be the SSOA's assigned consultant for the EP Streetcar Project
- **Vital Assurance made their monthly visit on Aug 8 to review progress of the streetcar project**



CRRMA and COEP Transition Timelines

- CRRMA is responsible for Streetcar system construction and PCC remanufacturing
- Hand-off to the COEP will be incremental as infrastructure and PCC cars are certified operational
 - **Maintenance and Storage Facility (MSF) handed off to COEP week of Apr 9**
 - Trackworks
 - Communications system
 - Overhead contact system
 - Traction power substations
 - Streetcar stop amenities: landscaping, loading platforms, etc.
- **Expected handoff to COEP for trackworks, OCS and traction power substations is moved to late Aug/Sep**



Other Streetcar Activities

- 7 streetcar operators started Jun 4, and all passed their final classroom exams
- **120 hrs of pedal time per operator is in progress during nights and days**
- Streetcar testing, before burn-in, includes:
 - Brake and acceleration
 - Clearance and comfort
 - Other functionality tests
- **Burn-in for PCC cars 1506 and 1504 scheduled to start week of Aug 20**
- **Testing continues for PCC cars #1506, #1512 and now #1504, day and night, on both the downtown and uptown loops**



Other Streetcar Activities

- Sun Metro is in the process of developing an ordinance with PD and Legal on street blockage preventing streetcar operations, which would include towing; proper dynamic envelope lines will be drawn on the streets, as well as signage displayed and a marketing program implemented informing the public of this new ordinance
- Sun Metro will send the Operations Manager and Field Supervisor to the Basic Rail Investigation Training in the first class available
- Sun Metro will send the AD for Streetcar Operations and Safety and Security Officer to the Advanced Rail Investigation Training in the first class available



Arrival of Streetcars



PCC Car Timelines

- 1st PCC car, #1506, arrived Mar 19
 - Burn-in testing must pass 200 miles of perfect continuous operations
- 2nd PCC car, #1512, arrived on Apr 29
 - Burn-in must pass 50 mi test
- 3rd PCC car, #1504, arrived Jul 15
 - Burn-in must pass 200 miles of perfect continuous operations
- **4th PCC car is tentatively scheduled to arrive Aug 25-26**
- PCC cars 5-6 will arrive one-by-one, in Sep and Oct 2018



Outreach and Branding



Streetcar Safety

COMMUNITY MEETINGS





Streetcar Safety

COMMUNITY MEETINGS

Three (3) community meetings along the Streetcar route to convey safety messages through videos, brochures, handouts, and open discussion

Downtown Loop:

Tuesday, August 21

La Fe Culture & Technology Center
(rear building)
721 S Ochoa Street
6:00-7:00PM

Wednesday, August 22

EP Main Library
501 N Oregon Street
5:30-6:30PM

Uptown Loop:

Thursday, August 23

Cathedral High School Auditorium
1309 N Stanton Street
6:00-7:00PM



Streetcar Operator Training

DAYTIME TESTING OUTREACH

Outreach start date: Friday, August 10

Communications sent through

Barracuda:

Social Media

E-Newsletter

COEP:

Social Media

Press Release

Sun Metro:

Social Media

Website

Postcards mailed to residents along the Streetcar route

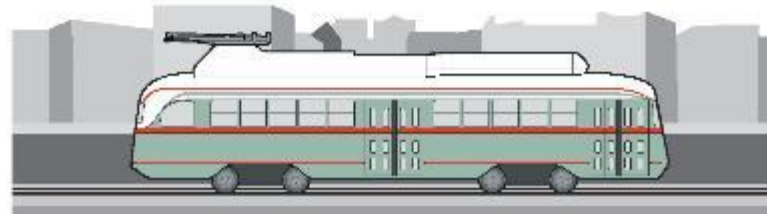


Streetcar Operator Training

DAYTIME TESTING OUTREACH



- 1 LOOK both ways and LISTEN for the streetcar before you step into the crosswalk.
- 2 Only cross the tracks at a crosswalk when the WALK signal is on. Never walk in front of a moving streetcar.
- 3 Never walk, run, or play along the streetcar tracks.
- 4 When driving, pass the streetcar with caution. Never block the tracks while parking or changing lanes.
- 5 Never cut in front of a moving streetcar.
- 6 Park only at designated spaces along the streetcar route. Never block the tracks.
- 7 Pay attention to new signs, striping & signals all along the streetcar route.
- 8 Don't ride your bike along the rails. Your tires could get stuck. Always cross rails at a 90-degree angle.
- 9 Stanton (between Baltimore & Rio Grande) is now a 2-way bikeway. Bikes travel north and south on the same side of the street.
- 10 Never grab the back of a streetcar to be pulled along on your bike.





Streetcar Operator Training

DAYTIME TESTING OUTREACH

Public Service Announcement

Communications sent to all safety partners including school districts, UTEP, EPCC, hospitals, Ft. Bliss, churches, and neighborhood associations.

TV Stations:

KDBC (CBS)

KVIA (ABC)

KTSM (NBC)

KFOX (FOX)

KINT (Univision)

KTDO (Telemundo)

El Paso Times (newspaper)

El Diario (Spanish newspaper)

Radio Stations:

Power 102.1 KPRR FM

Sunny 99.9 KTSM FM

96.3 KHEY Country FM

HOT 93.5 KPRR FM

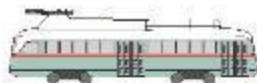
Fox Sports 1380 KHEY AM

Talk Radio 690 KTSM AM



Streetcar Operator Training

DAYTIME TESTING OUTREACH



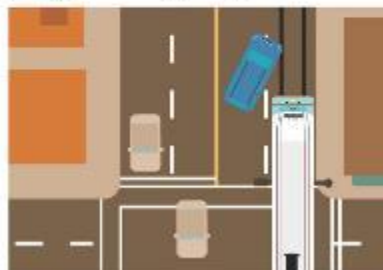
STREETCAR SAFETY TIPS

Sun Metro will begin testing during daytime hours on Monday, August 18. We remind the public to always follow standard safety procedures when driving, cycling or walking: Obey traffic laws and cross safely at designated locations.



Pedestrians

1. Look both ways and listen for the streetcar before you step into the crosswalk. Streetcars run on electricity and are extremely quiet when approaching a station.
2. Remove headphones or reduce volume so you can hear streetcar warning bells and horns. Streetcars will provide warning sounds before coming to a stop.
3. There are new signals all along the streetcar route. Cross only at a crosswalk when the walk signal is on.
4. Never try to beat a moving streetcar by walking or running in front of it while it's in motion. Streetcars cannot make sudden stops.



Motorists

1. Pass the streetcar with caution. Never block the tracks while parking or changing lanes.
2. Never cut in front of a moving streetcar. Do not attempt a right hand turn in front of a streetcar. Get behind the streetcar to make any right hand turns.
3. Park only at designated spaces along the streetcar route. Never block the tracks. Cars will be towed.
4. Pay attention to new signs, striping & signals all along the streetcar route.



Cyclists

1. Avoid riding near streetcar tracks when possible. Track grooves are slightly wider than the typical bike tire, so it's easy for tires to become caught between the rails. Always cross rails at a 90 degree angle.
2. Tracks can be slippery, especially when wet. Try to avoid any wet areas along the route when crossing the tracks.
3. Stanton Street (btwn Baltimore & Rio Grande) is now a 2-way bikeway. All cyclist can ride north and south on the same side of the street.
4. Never grab the back of a streetcar to be pulled along on your bike.







El Paso Streetcar Transition Update

Questions?