

I T E M 1 6 . 2

REZONING

343-345 Zaragoza Road



An aerial photograph of El Paso, Texas, showing the city skyline with various buildings and a large parking lot in the foreground. The city is situated in a desert landscape with rocky hills and sparse vegetation. The sky is filled with large, white clouds, and the overall scene is captured from a high vantage point, looking down on the city and out towards the horizon.

Recommendation | Public Input

2

Planning/DCC recommendation:

Approval of the rezoning request with a landscape buffer condition

CPC Vote:

Approval with Conditions (9-0):

- *That a 10' landscaped buffer with high-profile native or naturalized trees of at least two-inch (2") caliper and ten (10') in height shall be placed at fifteen (15') on center along the property lines adjacent to residential or apartment zone districts or uses.*
- *That a Detailed Site Development Plan is approved by City Plan Commission prior to the issuance of any building permits.*

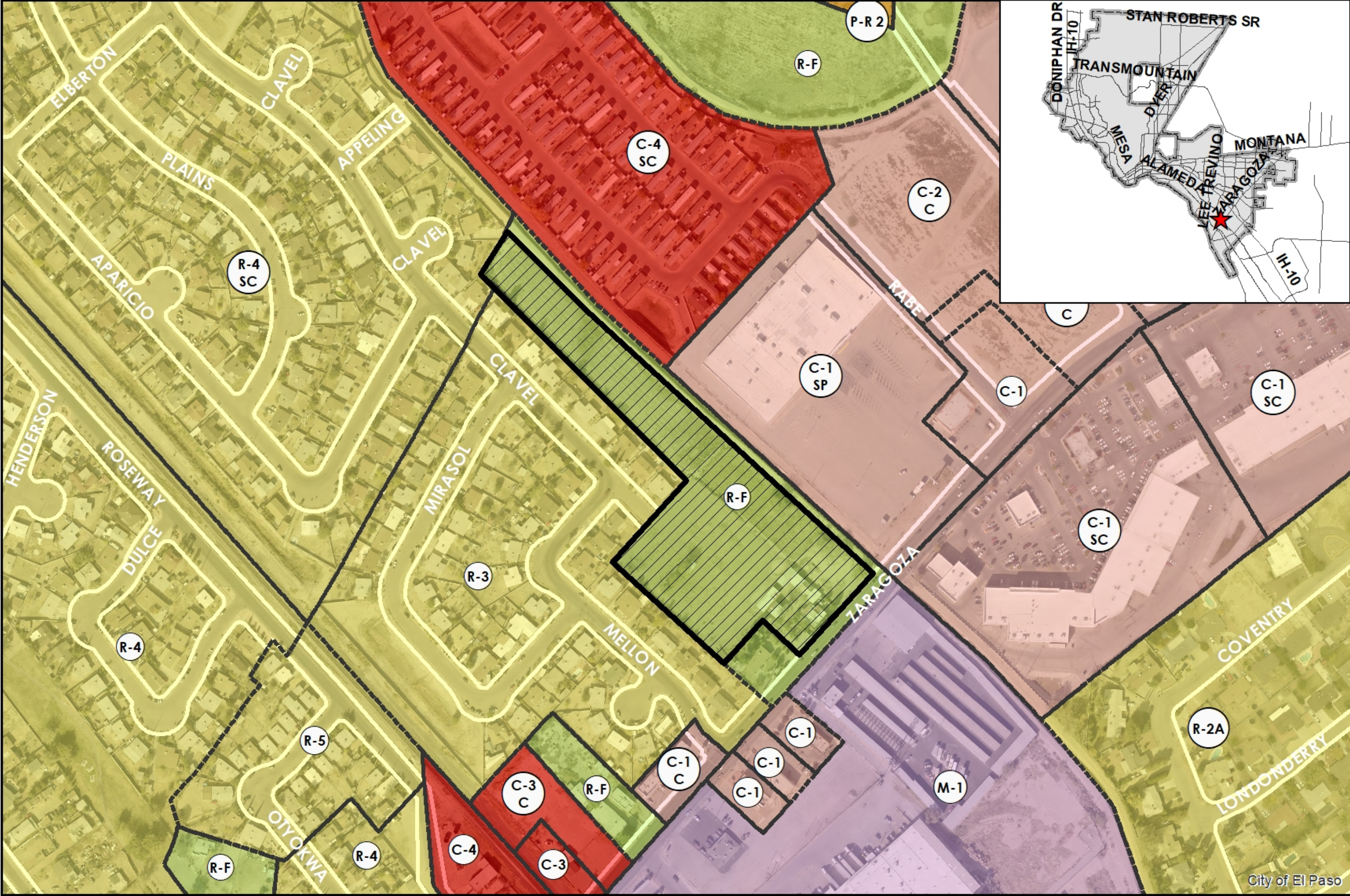
Public Input:

- The Planning Division has received three calls of inquiry, and one call and one letter of opposition to the rezoning request.

Strategic Goal #3 Promote the Visual Image of El Paso


3.1 Provide business friendly permitting and inspection processes

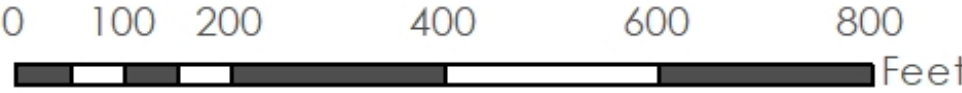
3.2 Improve the visual impression of the community



This map is designed for illustrative purposes only. The features depicted here are approximate and more site-specific studies may be required to draw accurate conclusions. Enlargements of this map to scales greater than its original can induce errors and may lead to misinterpretations of the data. The Planning & Inspections Department Planning Division makes no claim to its accuracy or completeness.




 Subject Property

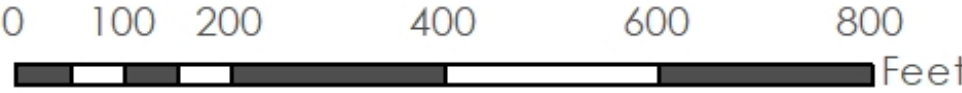




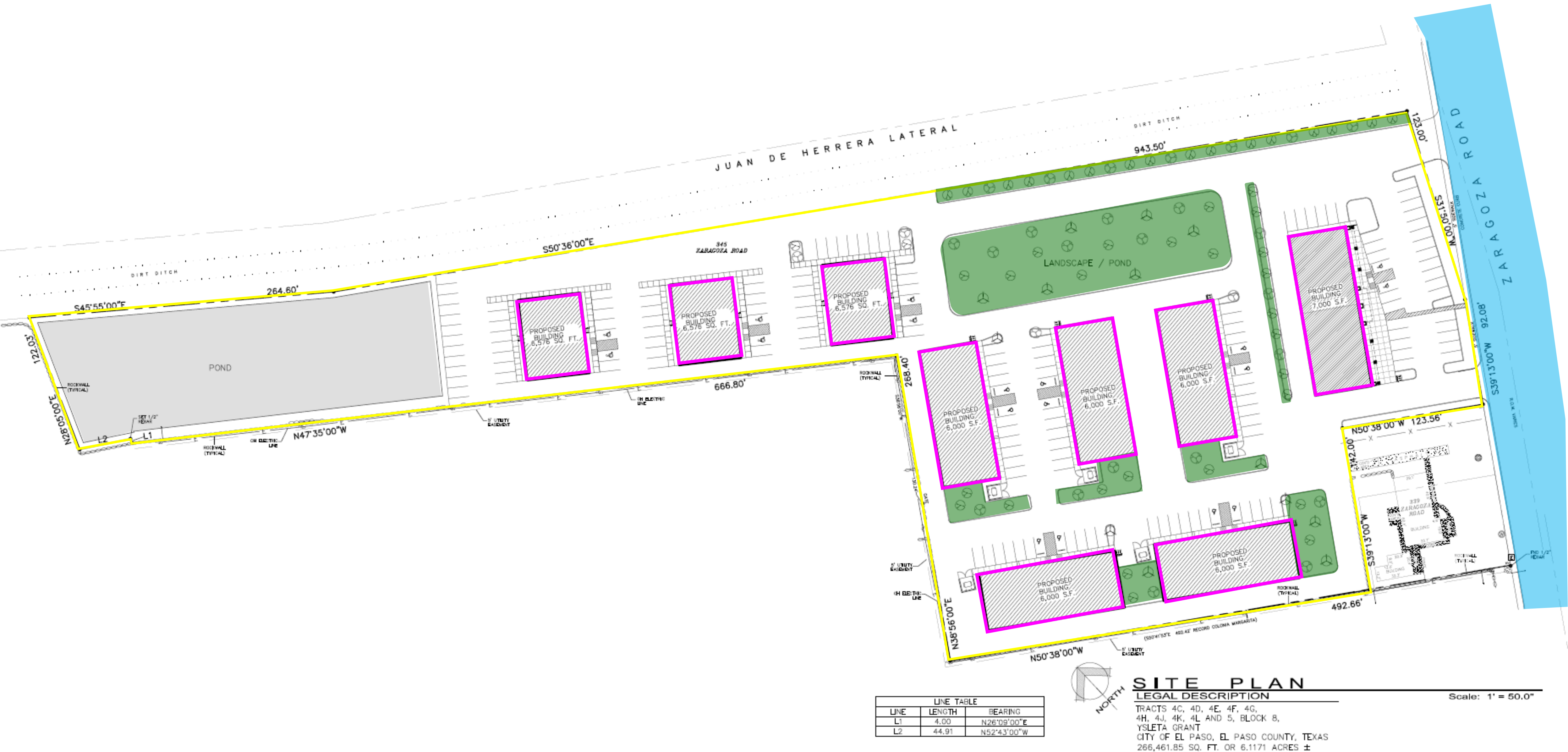
This map is designed for illustrative purposes only. The features depicted here are approximate and more site-specific studies may be required to draw accurate conclusions. Enlargements of this map to scales greater than its original can induce errors and may lead to misinterpretations of the data. The Planning & Inspections Department Planning Division makes no claim to its accuracy or completeness.



 Subject Property

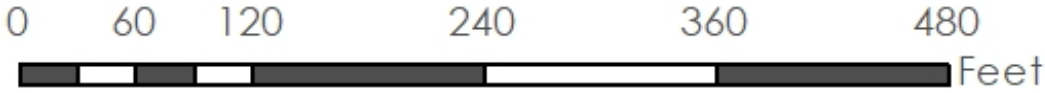


CONCEPTUAL SITE PLAN





This map is designed for illustrative purposes only. The features depicted here are approximate and more site-specific studies may be required to draw accurate conclusions. Enlargements of this map to scales greater than its original can induce errors and may lead to misinterpretations of the data. The Planning & Inspections Department Planning Division makes no claim to its accuracy or completeness.







N

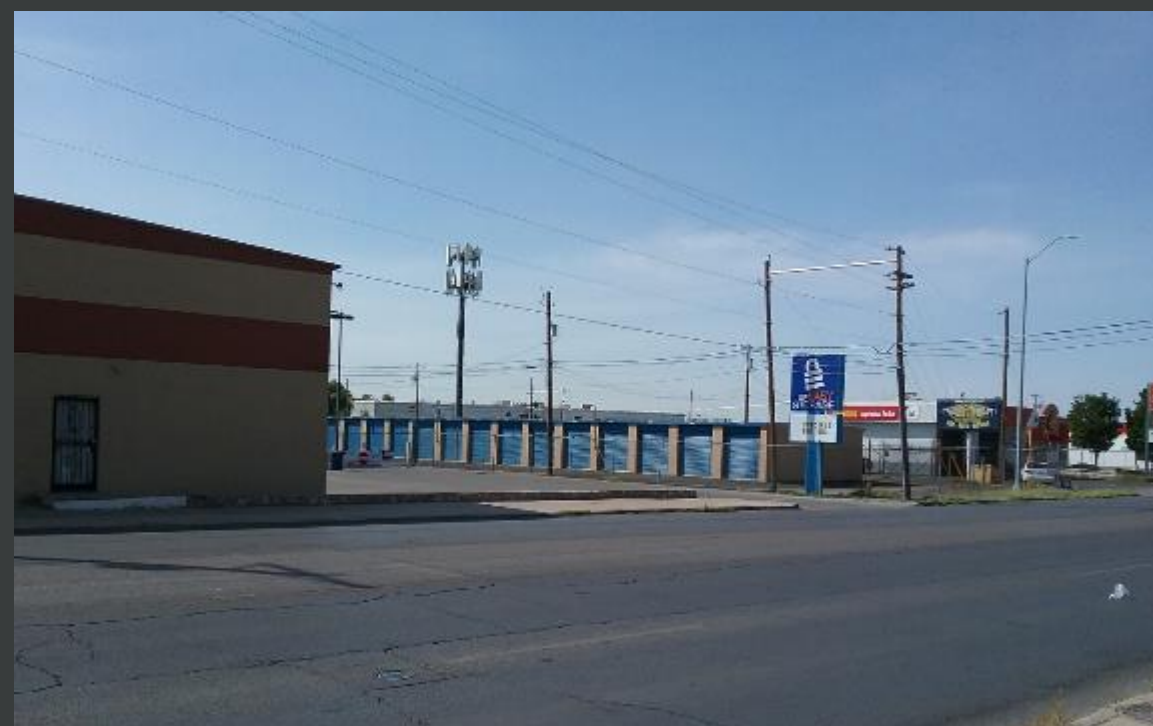


W



E

S



THANK YOU

