

ITEM 21.10

# PZRZ19-00005

183 S. Davis Drive, 8600 & 8590 Alameda Avenue





# Recommendation | Public Input

2

## **Planning Division recommendation:**

Approval

## **CPC Vote:**

Approval Recommendation (6-0)

## **Public Input:**

The planning division has not received communication in support or opposition to the rezoning request.

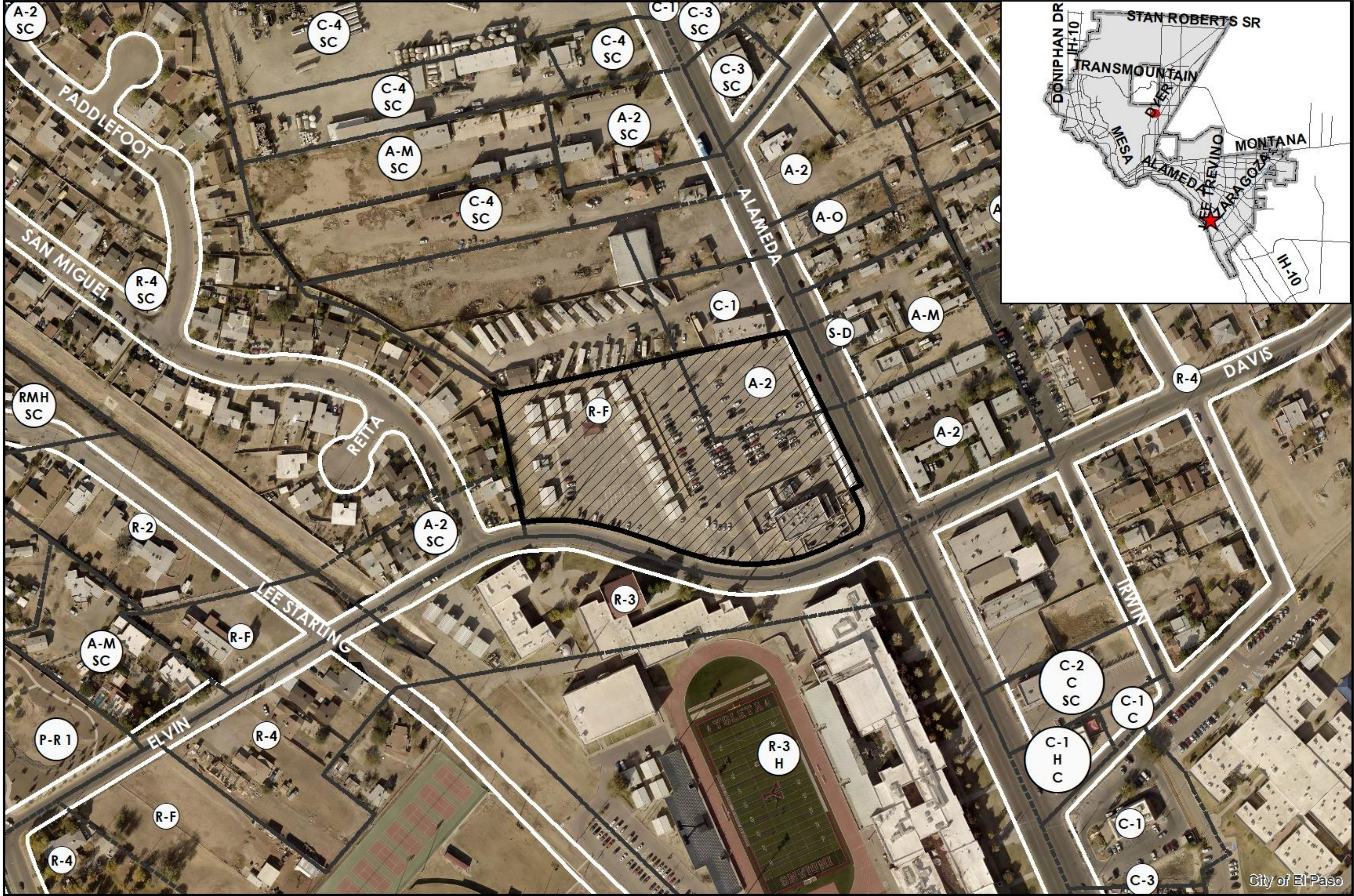
### **Strategic Goal #3 Promote the Visual Image of El Paso**

3.1 Provide business friendly permitting and inspection processes

3.2 Improve the visual impression of the community



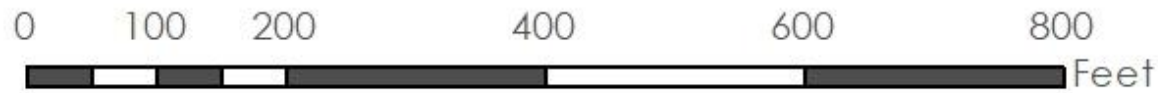
# PZRZ19-00005



This map is designed for illustrative purposes only. The features depicted here are approximate and more site-specific studies may be required to draw accurate conclusions. Enlargements of this map to scales greater than its original can induce errors and may lead to misinterpretations of the data. The Planning & Inspections Department Planning Division makes no claim to its accuracy or completeness.

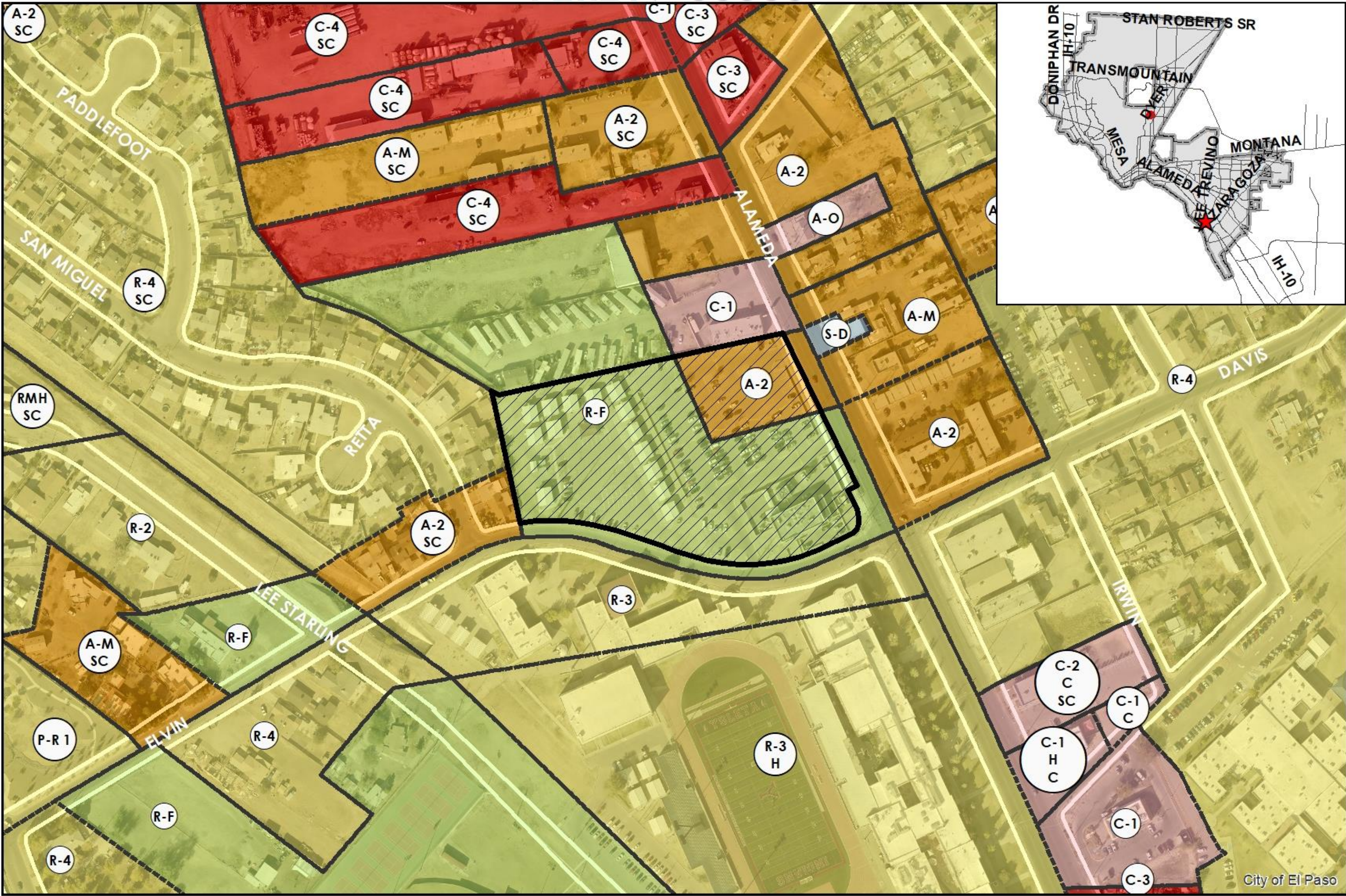


Subject Property





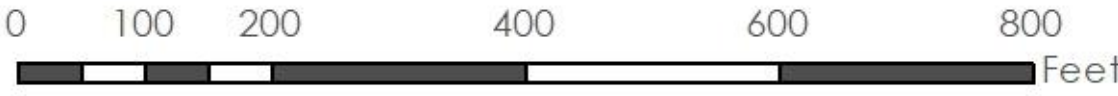
# PZRZ19-00005



This map is designed for illustrative purposes only. The features depicted here are approximate and more site-specific studies may be required to draw accurate conclusions. Enlargements of this map to scales greater than its original can induce errors and may lead to misinterpretations of the data. The Planning & Inspections Department Planning Division makes no claim to its accuracy or completeness.



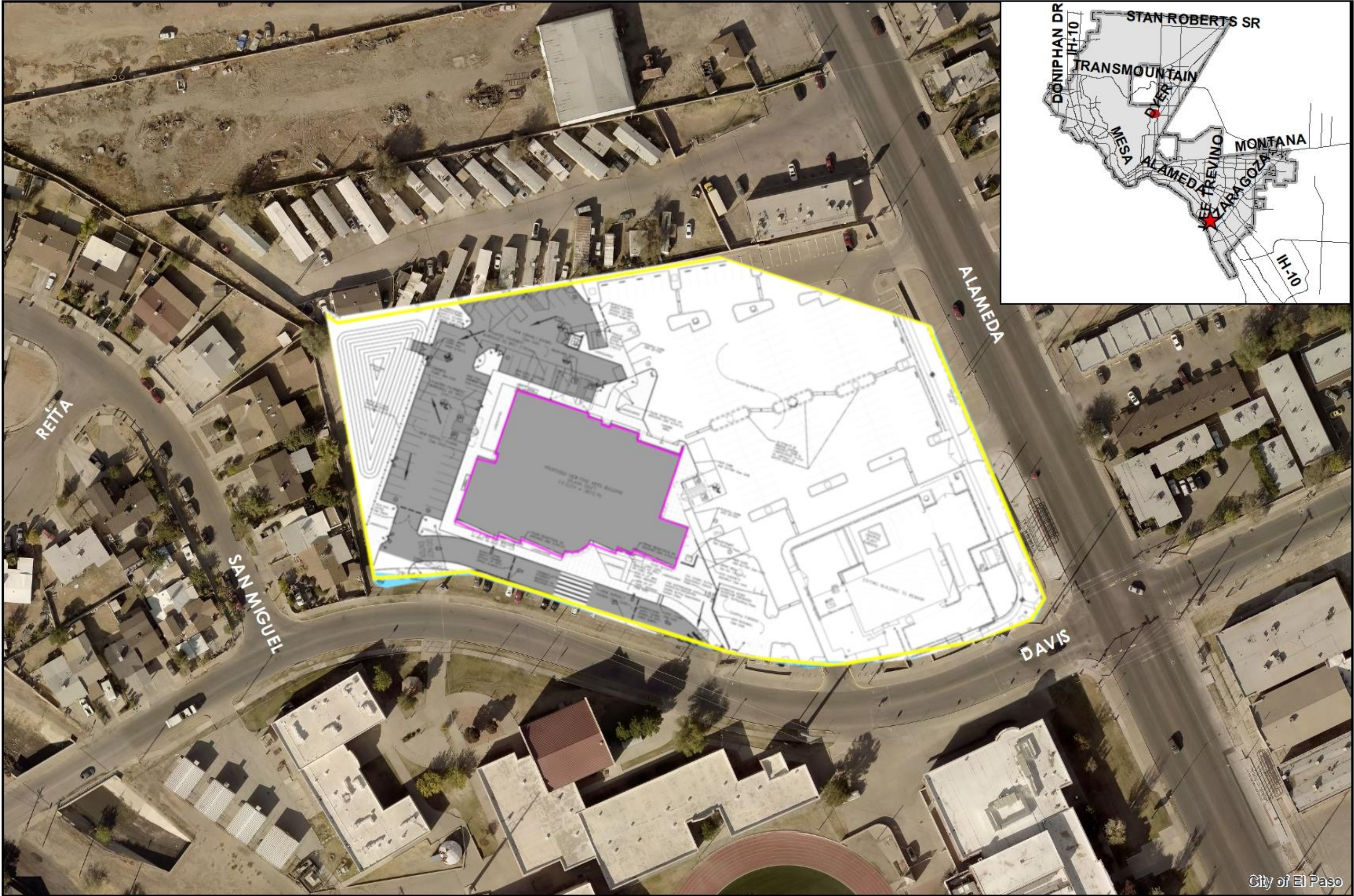
Subject Property





# Conceptual Site Plan

PZRZ19-00005



This map is designed for illustrative purposes only. The features depicted here are approximate and more site-specific studies may be required to draw accurate conclusions. Enlargements of this map to scales greater than its original can induce errors and may lead to misinterpretations of the data. The Planning & Inspections Department Planning Division makes no claim to its accuracy or completeness.





# Subject Property







N



W



E

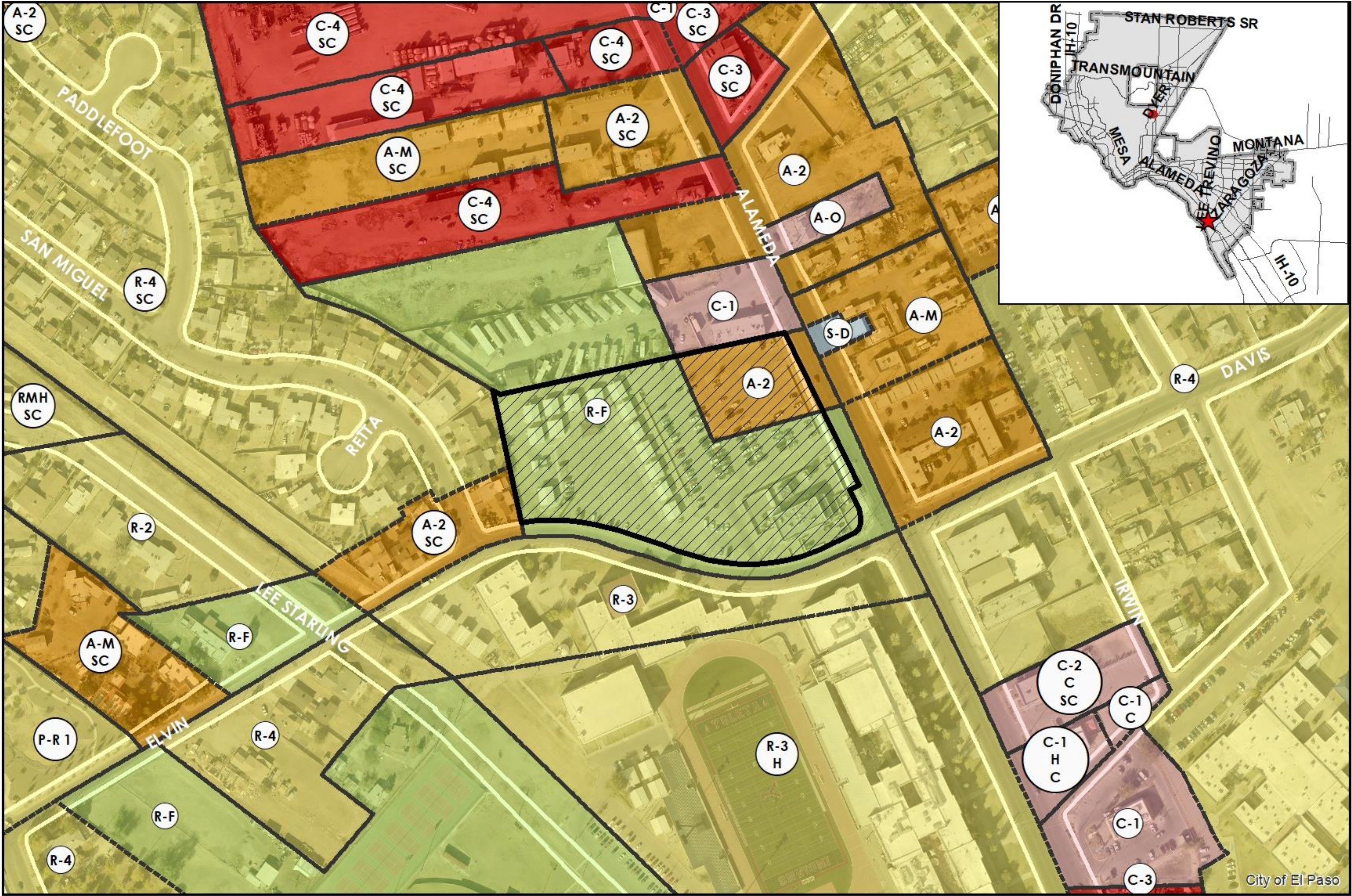


S





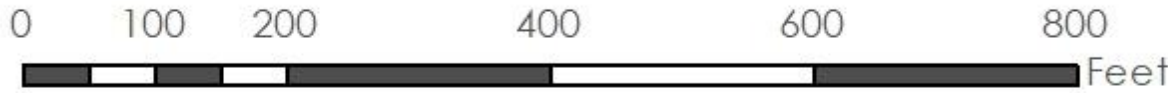
# PZRZ19-00005



This map is designed for illustrative purposes only. The features depicted here are approximate and more site-specific studies may be required to draw accurate conclusions. Enlargements of this map to scales greater than its original can induce errors and may lead to misinterpretations of the data. The Planning & Inspections Department Planning Division makes no claim to its accuracy or completeness.



Subject Property





**THANK YOU**

