



# Recommendation | Public Input

1

## **Planning Division / DCC recommendation:**

The City Plan Commission recommended APPROVAL of the rezoning request on May 30, 2019 with the following condition:

*That a 10' landscaped buffer with high-profile native trees of at least two-inch (2") caliper and ten foot (10') in height shall be placed at fifteen feet (15') on center along the property lines adjacent to residential or apartment zone districts or uses. The landscaped buffer shall be irrigated and maintained by the property owner at all times and shall be installed prior to the issuance of any certificates of occupancy;*

## **Public Input:**

Planning has received one call in opposition and one call of inquiry to the rezoning request; Notices resent to property owners within 300 feet on May 17, 2019.

### **Strategic Goal #3 Promote the Visual Image of El Paso**

3.1 Provide business friendly permitting and inspection processes

3.2 Improve the visual impression of the community

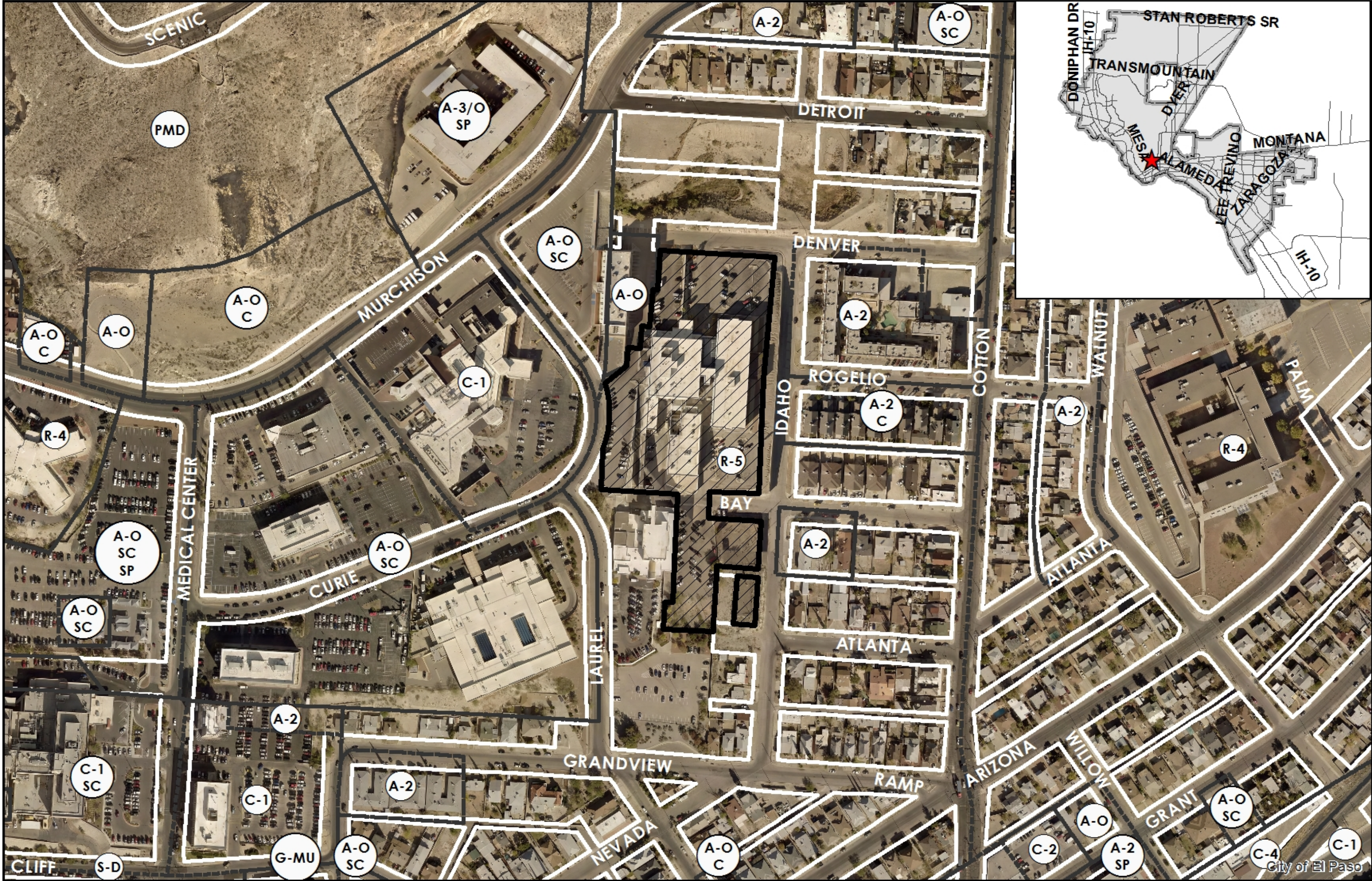
# REZONING



1155 Idaho St. & 1931 Atlanta Ave.



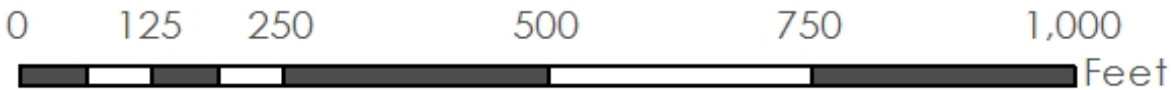
PZRZ18-00042



This map is designed for illustrative purposes only. The features depicted here are approximate and more site-specific studies may be required to draw accurate conclusions. Enlargements of this map to scales greater than its original can induce errors and may lead to misinterpretations of the data. The Planning & Inspections Department Planning Division makes no claim to its accuracy or completeness.

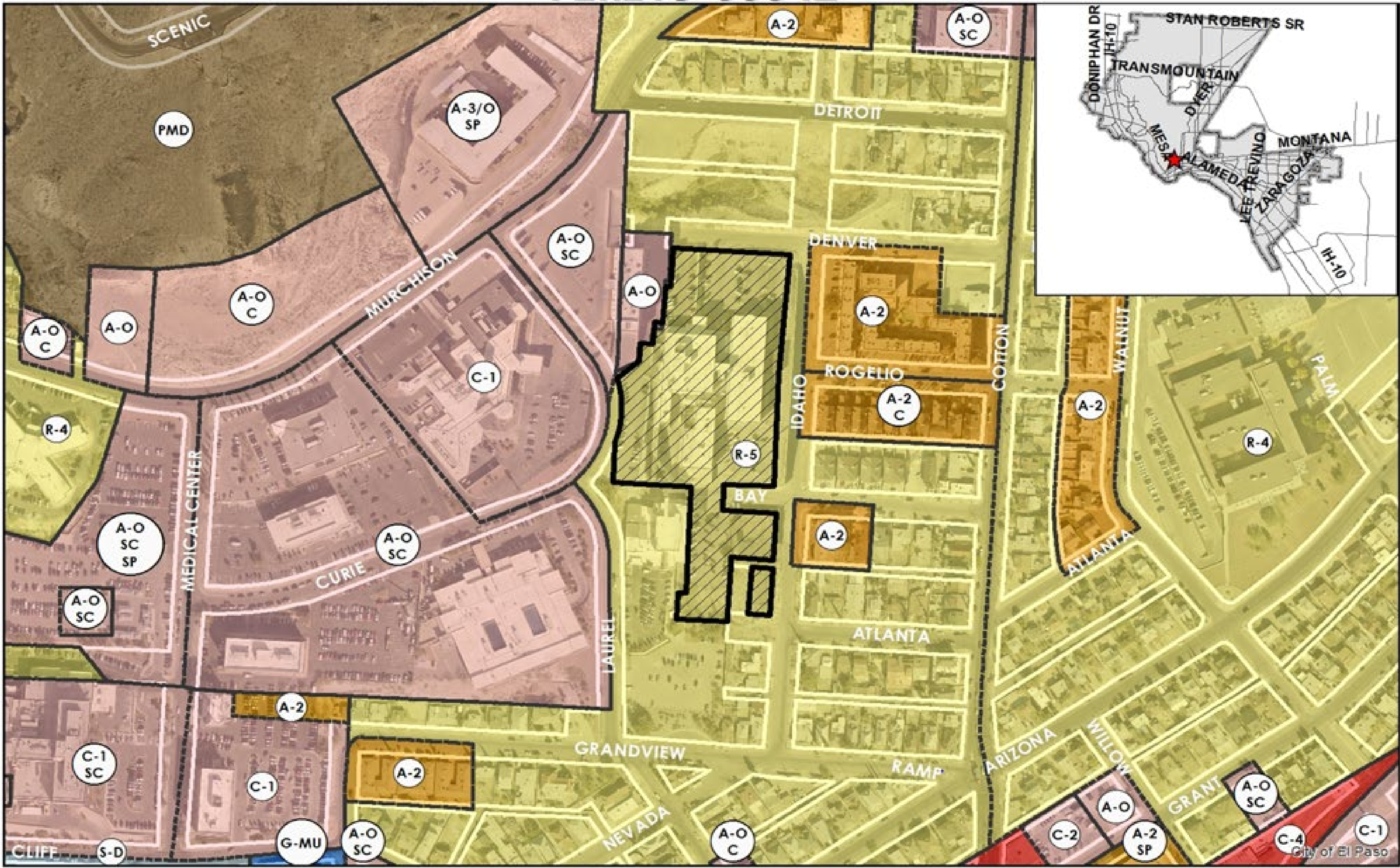


 Subject Property





PZRZ18-00042



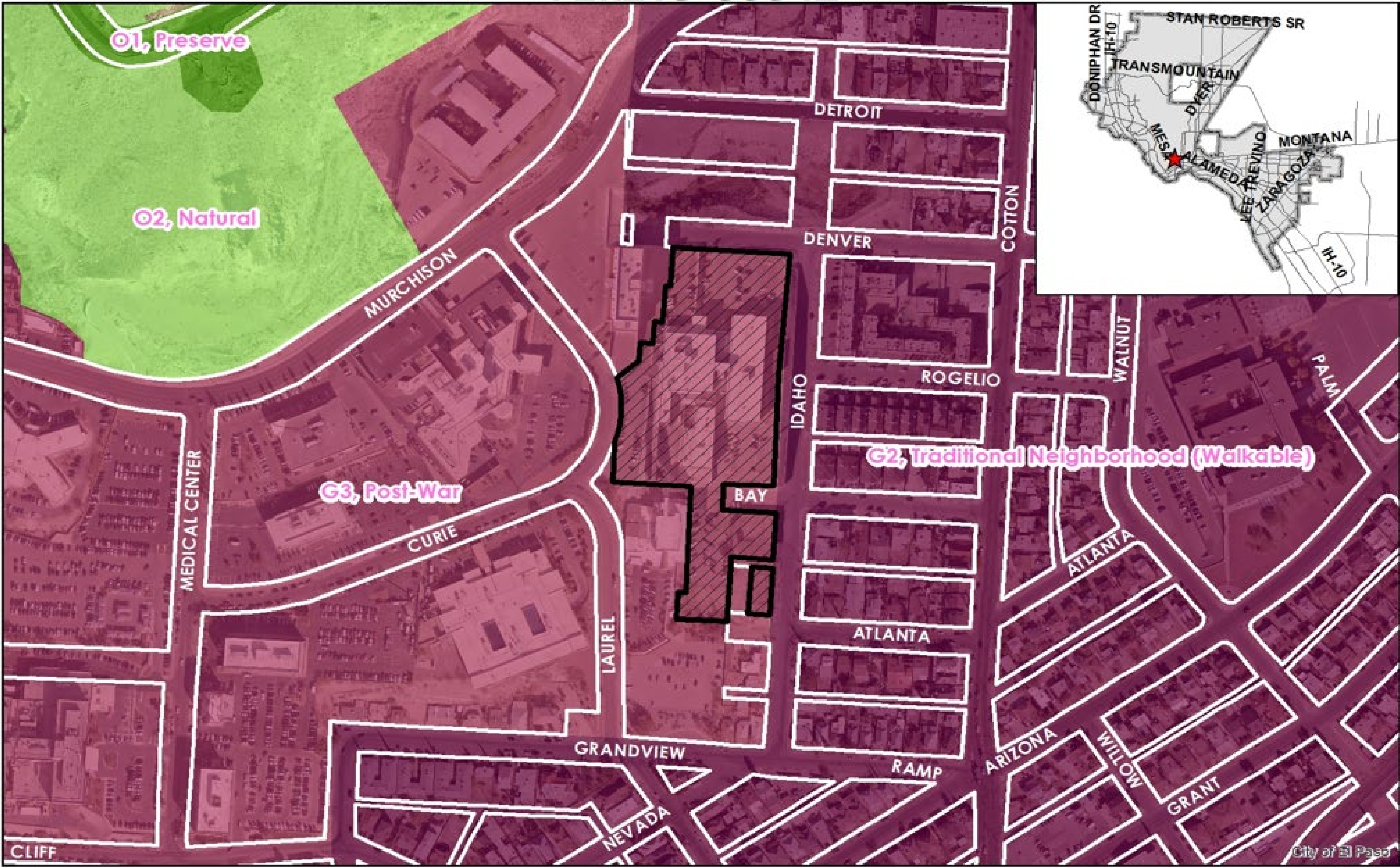
This map is designed for illustrative purposes only. The features depicted here are approximate and more site-specific studies may be required to draw accurate conclusions. Enlargements of this map to scales greater than its original can induce errors and may lead to misinterpretations of the data. The Planning & Inspections Department Planning Division makes no claim to its accuracy or completeness.



 Subject Property



PZRZ18-00042

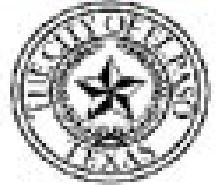


This map is designed for illustrative purposes only. The features depicted here are approximate and more site-specific studies may be required to draw accurate conclusions. Enlargements of this map to scales greater than its original can induce errors and may lead to misinterpretations of the data. The Planning & Inspections Department Planning Division makes no claim to its accuracy or completeness.



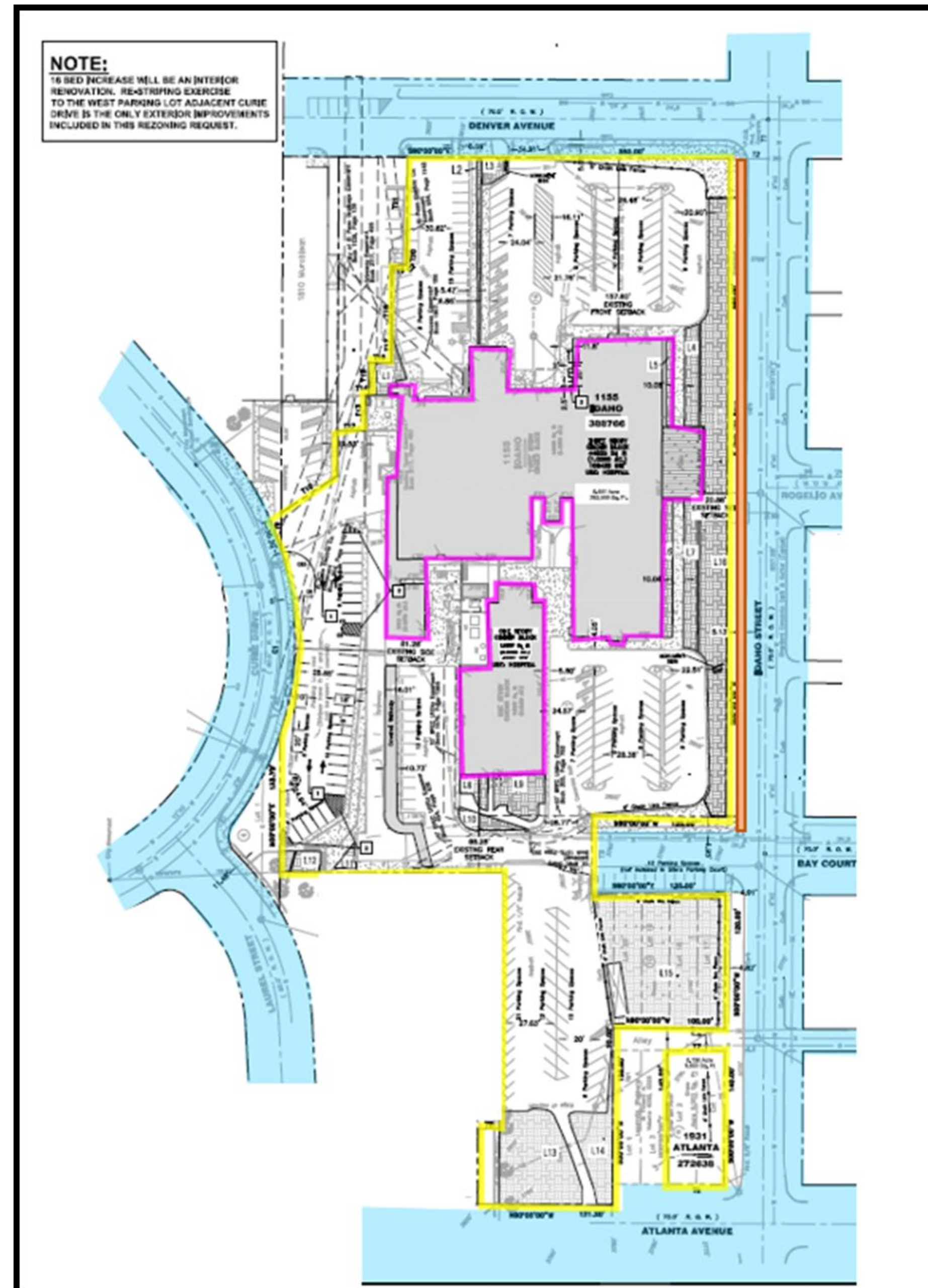
 Subject Property

0 125 250 500 750 1,000 Feet





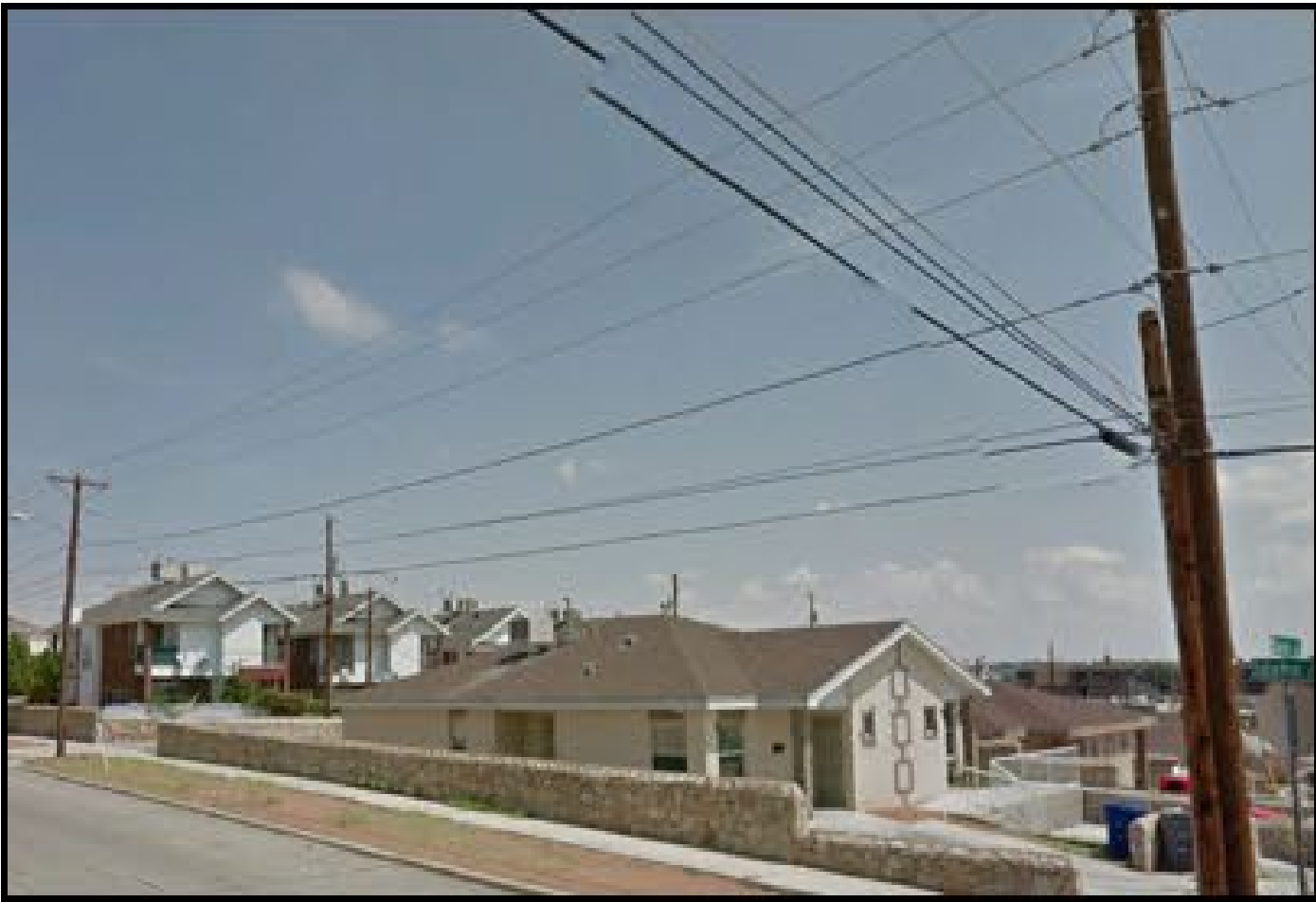
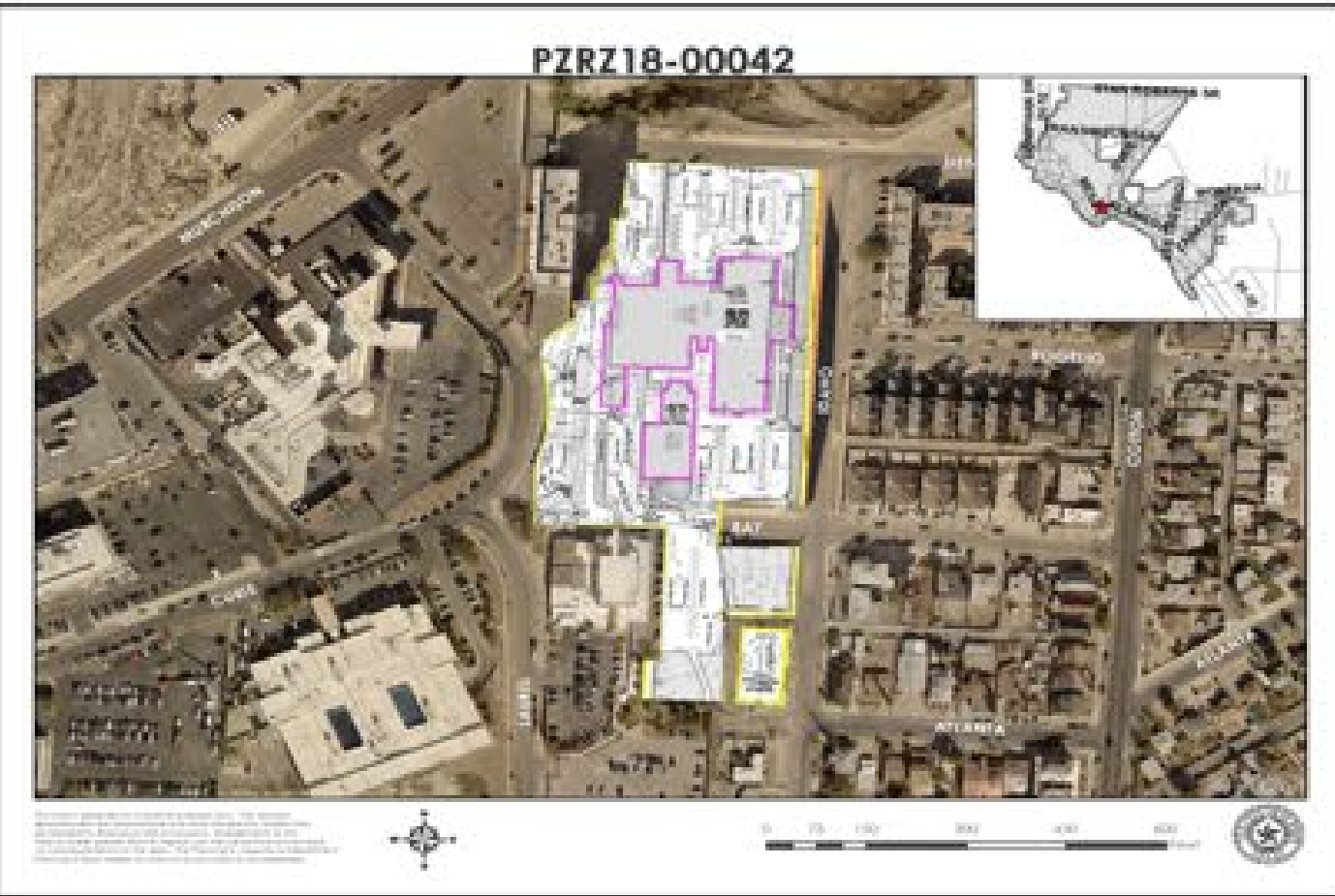
## 6



# Subject Property









# THANK YOU

