

# Cebada and Magnolia Drainage Systems

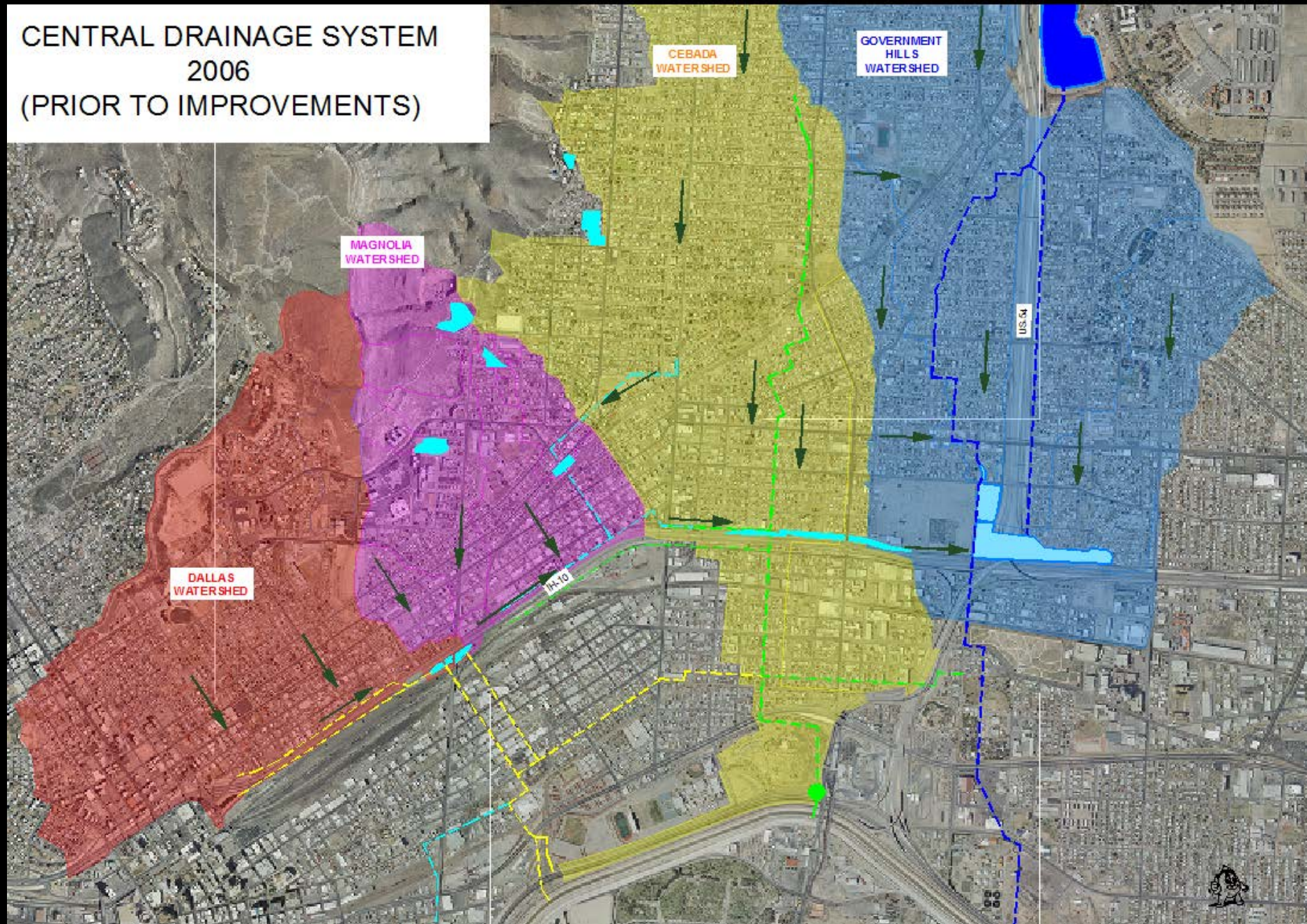
---

John Balliew, P.E.



Stormwater

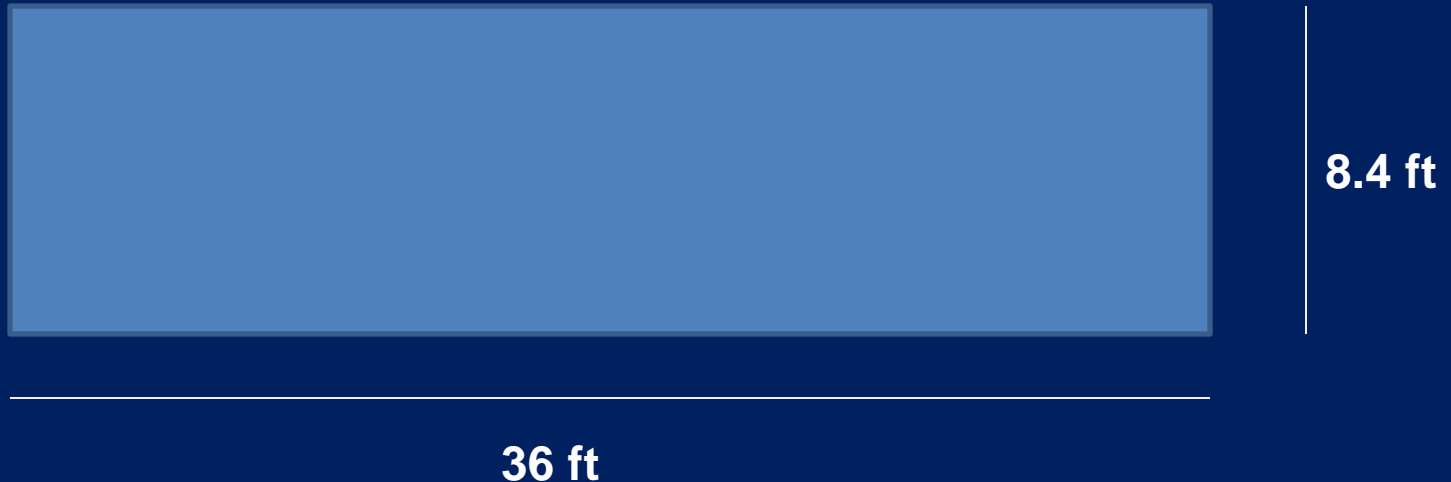
CENTRAL DRAINAGE SYSTEM  
2006  
(PRIOR TO IMPROVEMENTS)





# Cross Section

## 3000 cfs flow at 10 ft/s



Stormwater

# Drainage Utility Finances

---

- Collecting approximately \$15.6 million annually from stormwater fees
- Originally, fees were budgeted to be approximately \$22 million a year, but rates were lowered
- Over \$650 million in projects identified in Stormwater Master Plan
- 10% of revenue must be set aside for open space/park pond projects



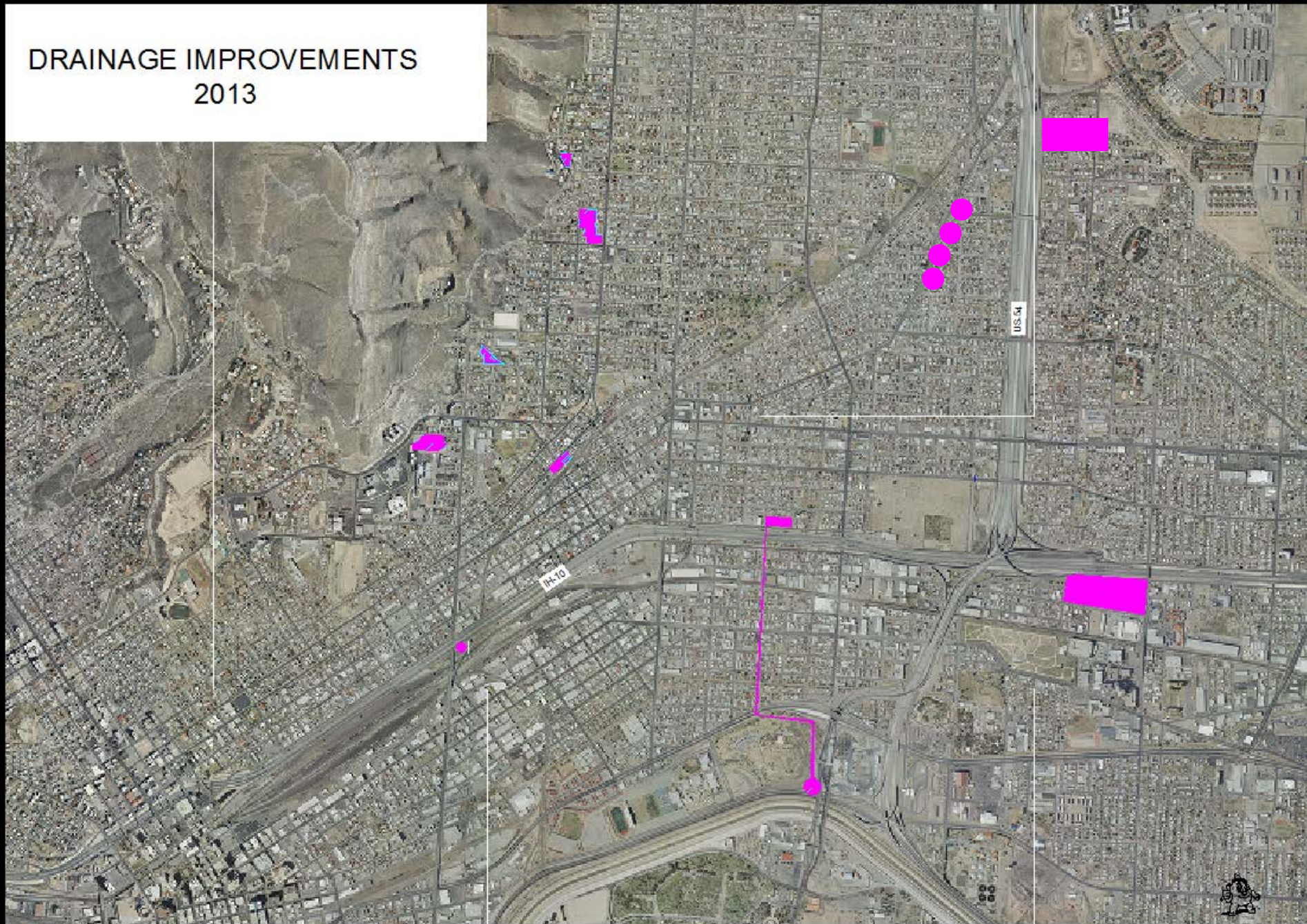
**Stormwater**

# Drainage Utility Revenues & Expenses

	FY 2008-09	FY 2009-10	FY 2010-11	FY 2011-12	FY 2012-13	Total
Operating Revenues	\$17,373,165	\$15,129,141	\$15,290,074	\$15,405,290	\$15,687,140	\$78,884,810
Operating & Maintenance	7,936,465	6,975,602	7,002,880	6,603,830	6,053,332	\$34,572,109
Capital Expenditures	5,107,113	3,981,158	13,158,456	14,907,798	6,692,640	\$43,847,165
Debt Service	0	\$0	1,853,410	3,127,872	3,430,674	\$8,411,956



# DRAINAGE IMPROVEMENTS 2013









# ARMENDARIZ POND

## Armendariz Pond

Land Acquisitions - Armendariz Pond





# AUSTIN POND



STEVENS

SAVANNAH

PARTELLLO

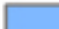

LACKLAND

ALTURA

STEVENS

MANCHESTER

## Austin Pond

-  Land Acquisitions - Austin Pond
-  Pending Land Acquisitions - Austin Pond



# CEBADA POND



CEBADA

MISSOURI

LUNA

GATEWAY WEST

I-10

Cebada Pond

Land Acquisitions - Cebada Pond



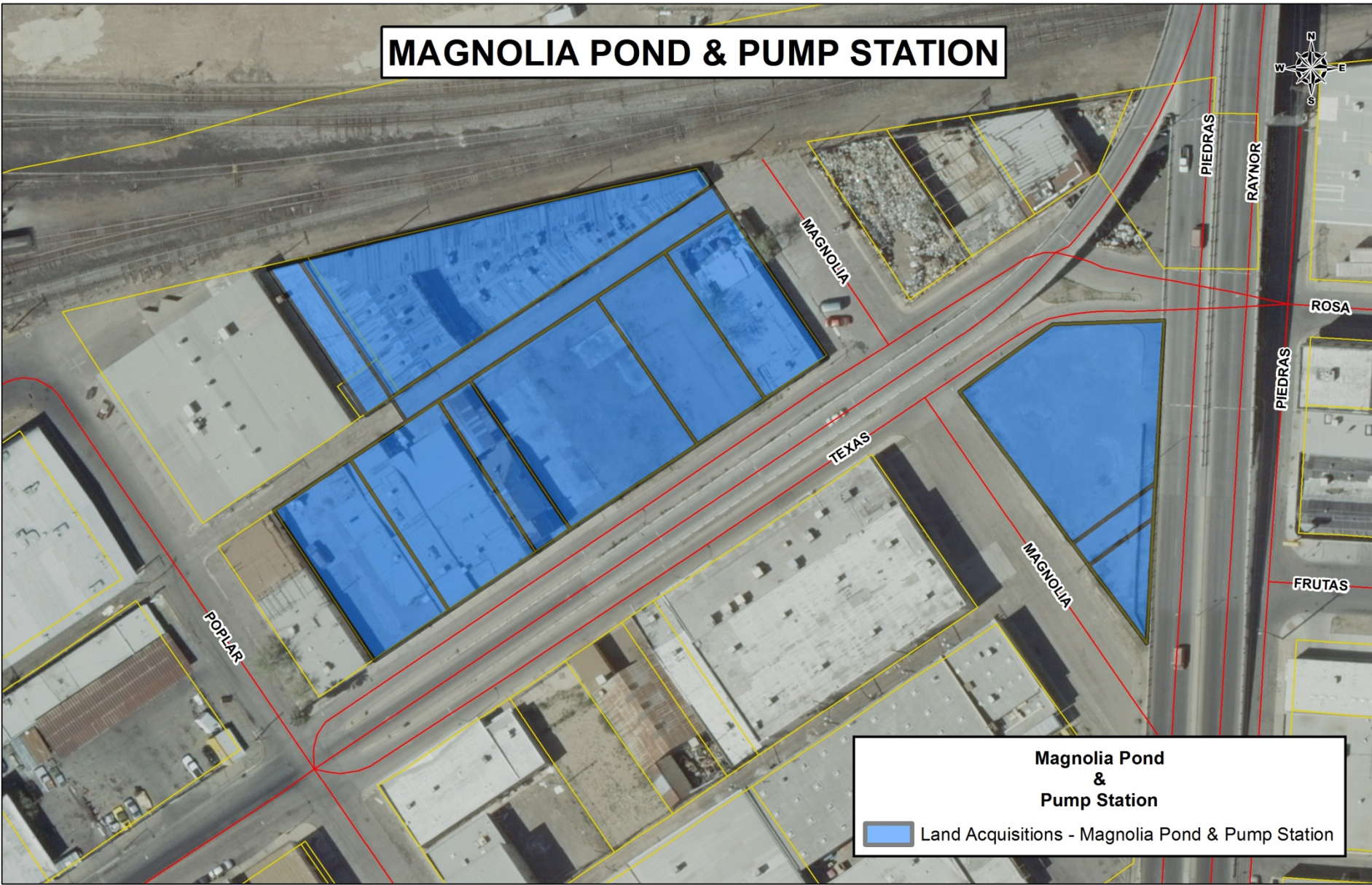


# POLLARD POND





# MAGNOLIA POND & PUMP STATION



**Magnolia Pond  
&  
Pump Station**

 Land Acquisitions - Magnolia Pond & Pump Station



# COPIA POND

LOUISVILLE

STEVENS

RUSSELL

BYRON

LEBANON

HAPPER

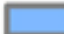

WILSON

AURORA

CAMBRIDGE

STEVENS

## Copia Pond

-  Land Acquisitions - Copia Pond
-  Pending Land Acquisitions - Copia Pond





# JOHNSON BASIN PARK-POND





LINCOLN

JUSTUS

TRUMAN

COPIA

## Johnson Basin

-  Land Acquisitions - Johnson Basin
-  Pending Land Acquisitions - Johnson Basin



# MORENCI POND



## Morenci Pond

Land Acquisitions - Morenci Pond

# Future Central Drainage Projects (Estimated Costs)

---

Magnolia Pump Station and Force Main	\$30 million
Morenci Pond	\$1 million
Copia Pond	\$2 million
Pollard Pond	\$800,000
Austin Pond	\$2.7 million
Gateway Pond Pump Station	\$5 million





# FY 2013-14 Budget

<b>\$15.6 M</b>	<b>Annual Income</b>
<b>\$7.0 M</b>	<b>O &amp; M</b>
<b>\$1.56 M</b>	<b>10% Open Space</b>
<b>\$4.0 M</b>	<b>Debt</b>
<b>\$2.5 M</b>	<b>For CIP</b>



**Stormwater**



# Sandbags - Facts

---

- Initially less than 300 sandbags were kept at each fire station, for a total of 10,000 and it would take a month to restock
- Currently, we have five locations-Fred Wilson, Escobar, Lockerbie, Boone, and Kappa with an inventory of 50,000
- In the past 4 years we issued an average of 15,000 bags per year
- In this September's storm we issued about 34,000 bags





# Sandbags - Facts

---

- We can produce about 7,500 bags per day
- Cost of sandbags is about \$2 per bag
- We keep a ready-ship flatbed full of sandbags at any time
- Sandbags rot and have a finite shelf-life
- We are looking at adding another storage location and another trailer



**Stormwater**



# Sandbags - Outreach

---

- 2009 Media Event announcing new locations and improved system
- News release every June and proactive media relations throughout summer
- Reminders on website
- Reminders on back of the bill
- Reminders on social media



**Stormwater**

# Informational Video



Stormwater