

# El Paso TB Event Update

El Paso City Council

October 7, 2014

# TB Event Statistics

- 3,227 babies born during Sept 1, 2013 and August 13, 2014
- 854 babies are deemed to have significant exposure
- As of Friday, October 3, 2014
  - 740 or 87% of identified families contacted
  - 530 or 62% of babies completed screening at Health Department
  - 6 Positive Results (4 BCG vaccinated)

# TB infant patient processing

- **Day 1** – review medical history, take vitals, educate parents, administer TB Skin Test (48-72 hours until reading)
- **Day 1, 2 or 3** – chest x-ray taken and read
- **Day 2 or 3** – chest x-ray reviewed, more education and TB Skin Test checked
- **Day 4, 5 & 6** (if needed) – Physician review

40-80-120-130

Patients per day

Each patient requires a minimum of 3  
medical visits for screening, 2 at the  
health department.

360 patients/week = 740 patient  
visits/week

MTW-initial visits / WThF – 2<sup>nd</sup> visits

# Surge Capacity and Limits

- **Normally** – 2 trained TB nurses testing and screening 20 patients/day or 80 patients/week
- **Surge** – 6-10 additional nurses testing and screening 120-130 patients/day or 360-390 patients/week
- 20 patients-screened/day to 120 patients-screened/day = 500% increase in productivity
- Hours of operation changed from M-Th, 7am to 6pm to M-Sat, 7am to 6pm (37.5% increase)

# Surge Capacity and Limits

- Trained TB Nurses
  - 2 RN's Worked 40 hrs./week now 75-80 hrs./week
- Pediatric ID/TB physicians
  - Usually 1. Contracted with 2 more.
- Exam rooms
  - Tripled in number on Saturday 9/20 by relocating STD, HIV and Immunizations to other locations
- Insufficient Parking
  - Moved most fleet vehicles off-site

# Surge Capacity Enhancements

- CDC
  - 3 consultants dispatched for onsite support
- DSHS
  - 2 nurses, 2 disease investigators onsite
  - 4 more nurses arriving this week
- San Antonio, Andrews and Cameron Counties
  - 4 seasoned and trained TB nurses
- Providence Memorial Hospital
  - 6-10 RN's/day
  - Free Chest X-rays for exposed infants

**2-1-1**  
**915-771-1228**  
**1-877-541-7905**

- Appointment line regularly open from  
8 am to 5 pm on M-F
- Information available 24/7
- Local number also available
- International toll-free number  
available

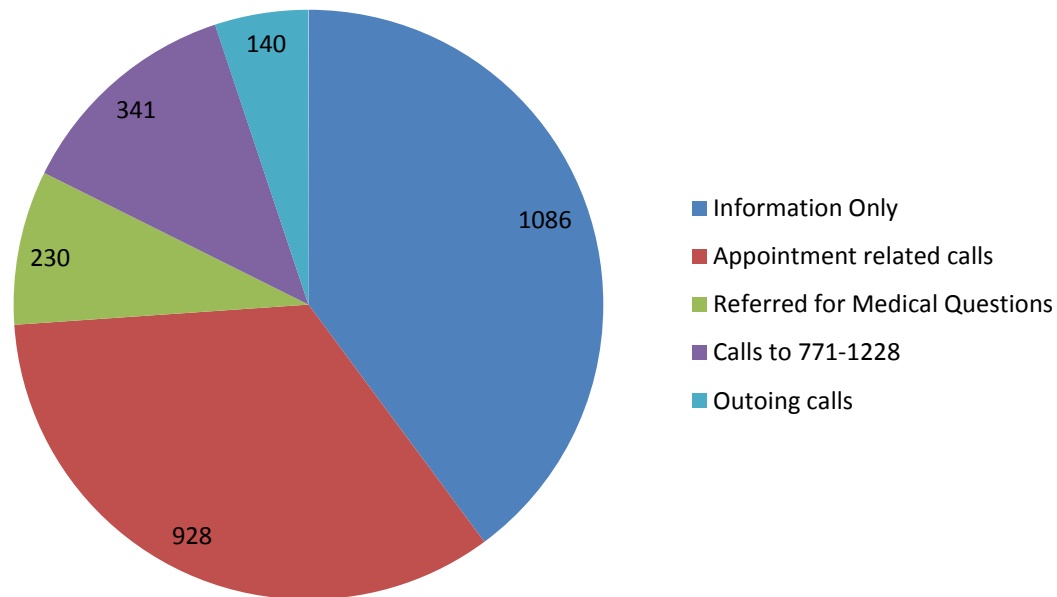


# 2-1-1 Surge

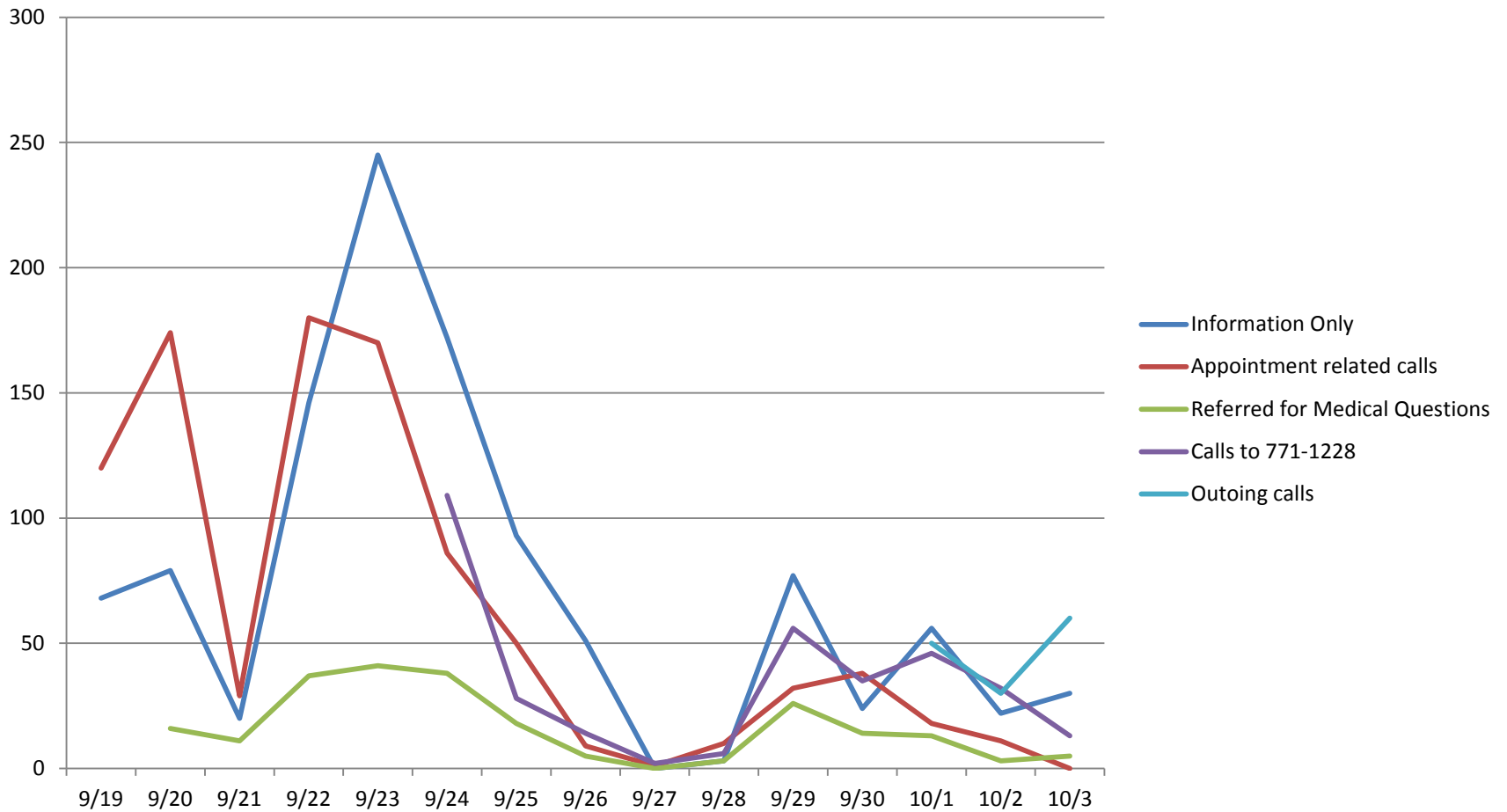
- Normally – 6.8 FTEs working M-F, 8-5
- Surge – 9 FTEs working M-Sun, 8-5 starting on 9/19
  - 12 FTEs working M-Sun, 8-5 starting on 9/24
  - 9/24 – started up a local, non-211 number
- Only 6 calls bounced to outside of El Paso (triggered by 8 minutes on hold – happened on 9/20)

# 2-1-1 calls – recap

2,724 TB calls through 10/3/2014



# 2-1-1 TB calls through 10/3



Questions?