

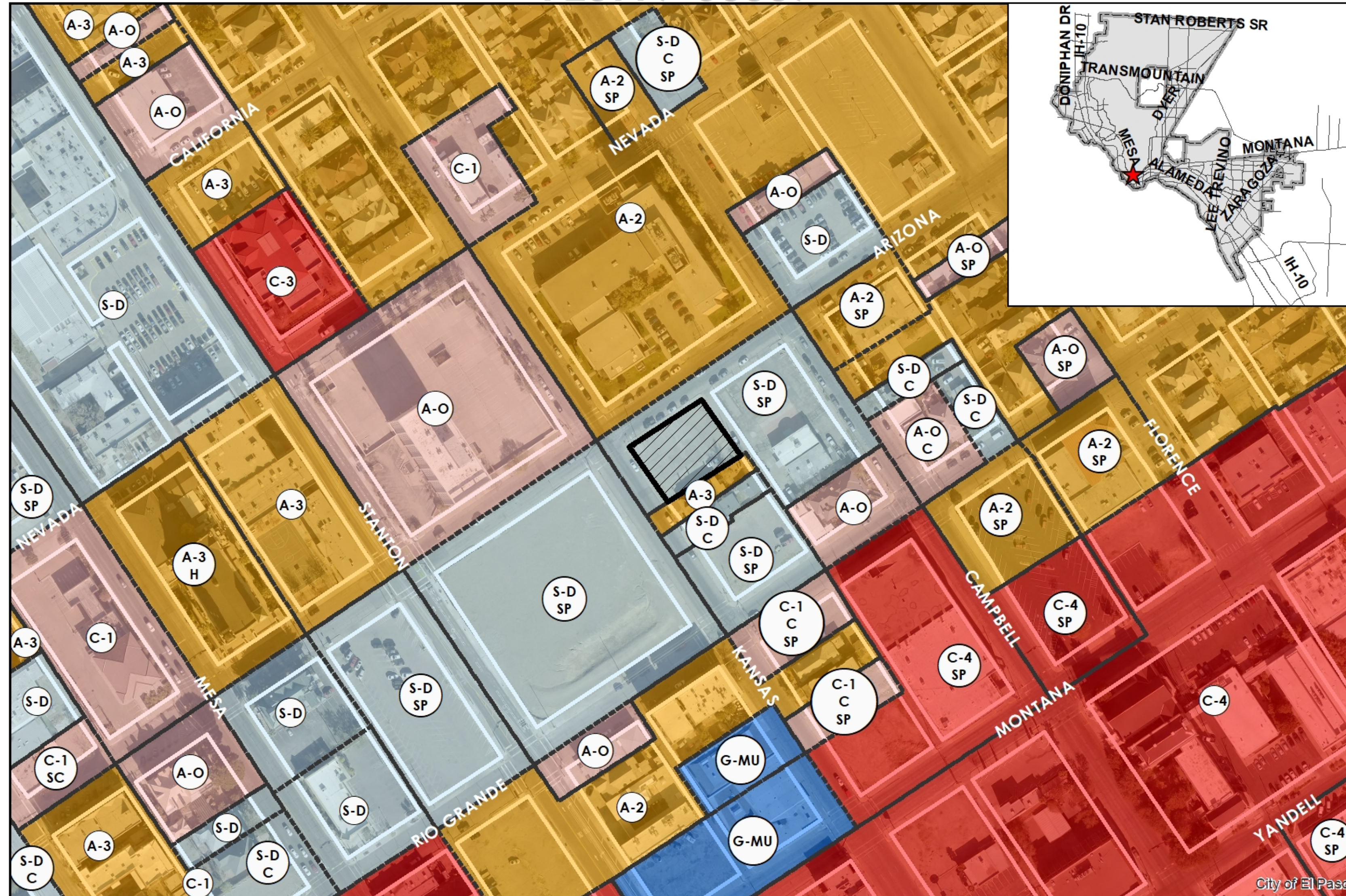
I T E M 2 4 . 2

SPECIAL PERMIT

4 0 4 A R I Z O N A



PZST19-00007



This map is designed for illustrative purposes only. The features depicted here are approximate and more site-specific studies may be required to draw accurate conclusions. Enlargements of this map to scales greater than its original can induce errors and may lead to misinterpretations of the data. The Planning & Inspections Department Planning Division makes no claim to its accuracy or completeness.



Subject Property

0 50 100 200 300 400 Feet



PZST19-00007

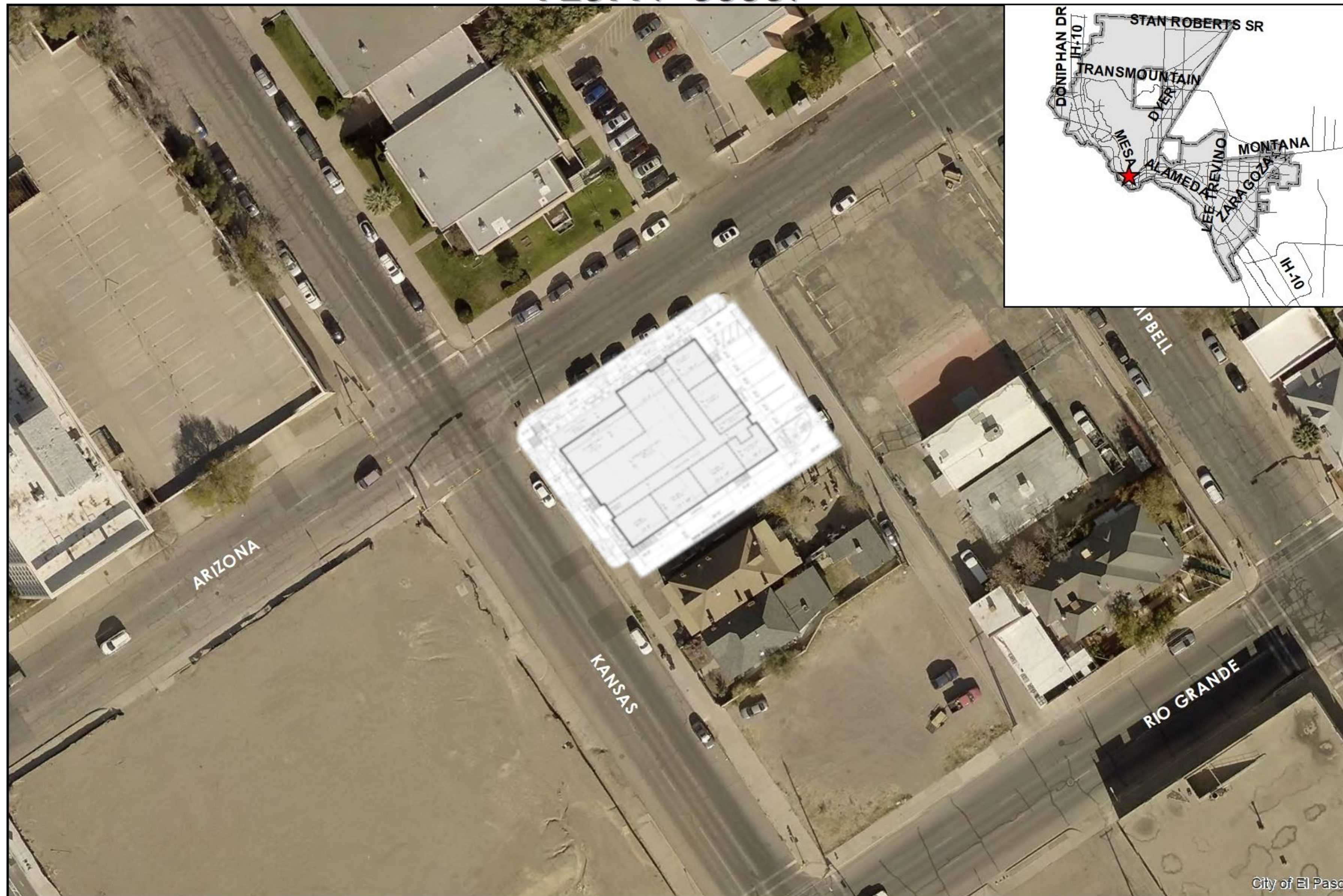


This map is designed for illustrative purposes only. The features depicted here are approximate and more site-specific studies may be required to draw accurate conclusions. Enlargements of this map to scales greater than its original can induce errors and may lead to misinterpretations of the data. The Planning & Inspections Department Planning Division makes no claim to its accuracy or completeness.



0 15 30 60 90 120 Feet



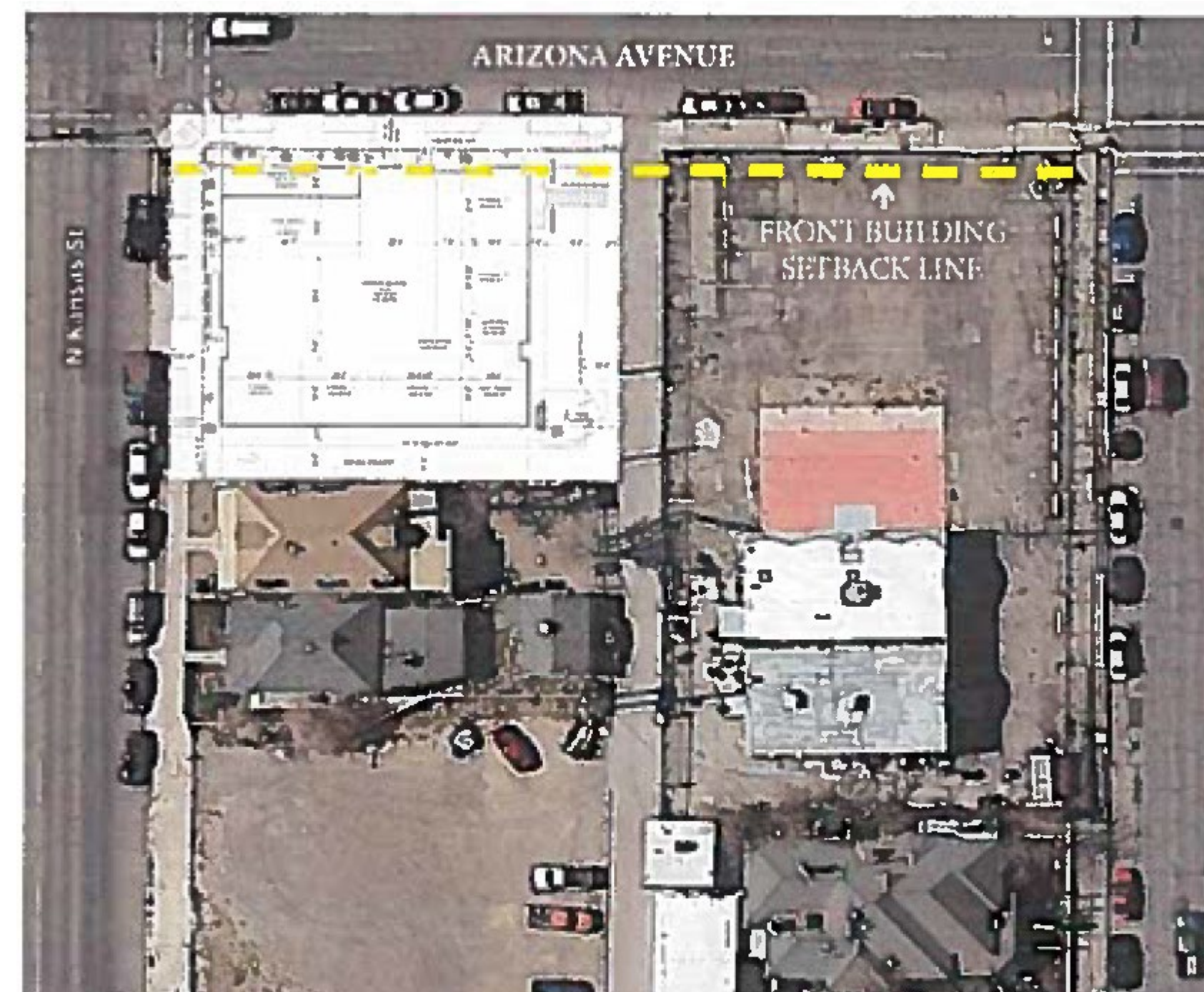


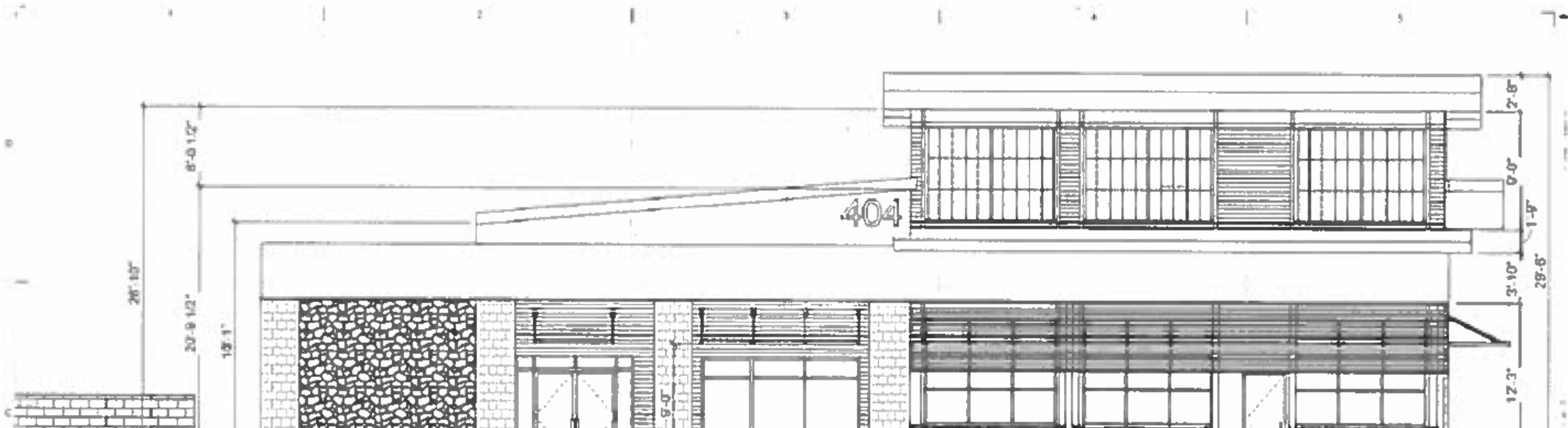
This map is designed for illustrative purposes only. The features depicted here are approximate and more site-specific studies may be required to draw accurate conclusions. Enlargements of this map to scales greater than its original can induce errors and may lead to misinterpretations of the data. The Planning & Inspections Department Planning Division makes no claim to its accuracy or completeness.











2.1 MINIMUM 50% GLAZING ON FRONT FACADE

CONTEMPORARY & ECLECTIC STYLES

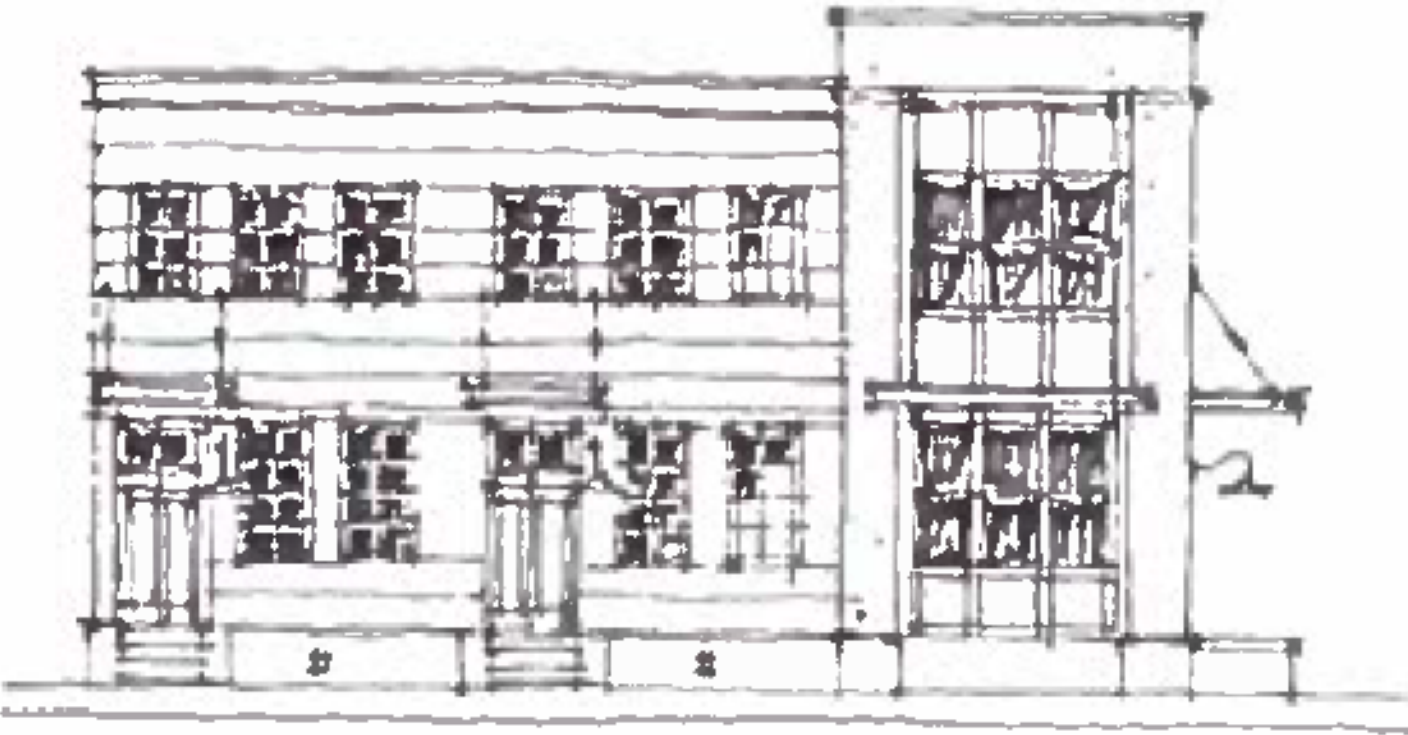
These styles cover a wide range of architectural types which have been prevalent since the middle of the 20th century.

Characteristics of the Contemporary & Eclectic Styles:

- Simple volumes
- Little or no ornamentation
- Large expanses of glass

Building Type Compatibility Chart

The Contemporary & Eclectic Styles in El Paso are appropriate for use with a number of building types. The following chart shall be used to determine appropriateness of style application for the building types listed. An example elevation is shown (right) for a representative building type.



Contemporary rowhouses

2.9 ARCHITECT OF RECORD IS LEED-CERTIFIED

2.4 ARCHITECTURAL STYLE FROM COMMUNITY DESIGN MANUAL IN PLAN EL PASO





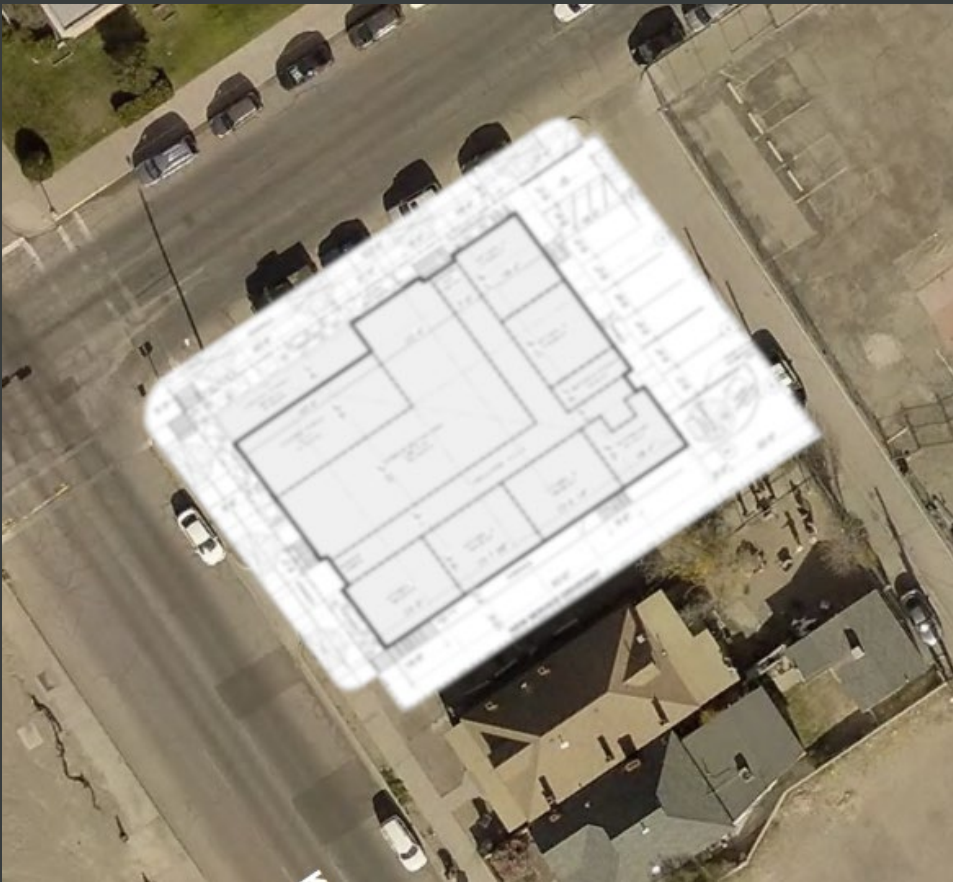




N



W



E



S

Recommendation | Public Input

14

Planning Division and Development Coordinating Committee recommendation:

Approval

Public Input:

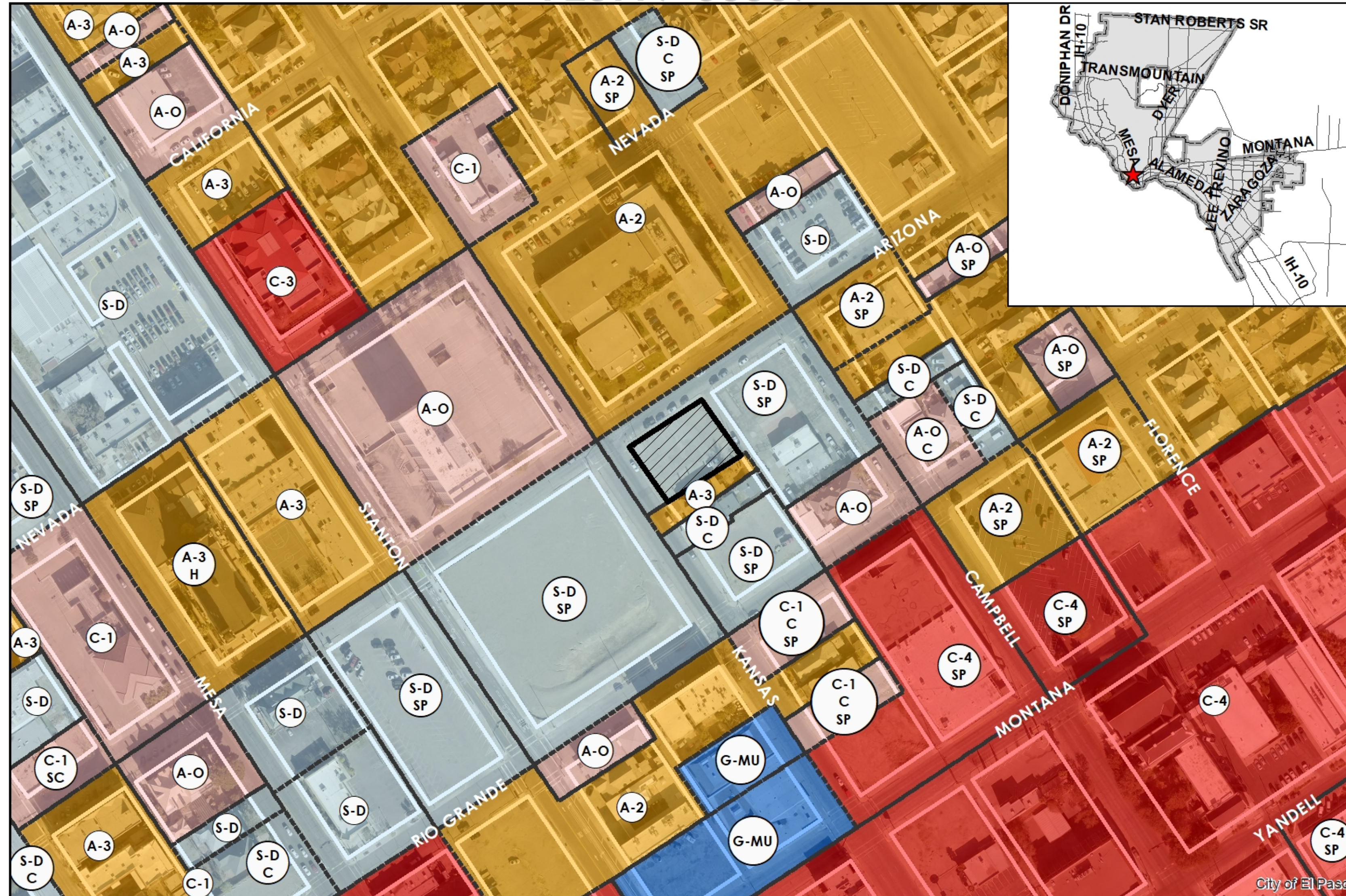
- The Planning Division has not received communication support or opposition to the special permit request.

Strategic Goal #3 Promote the Visual Image of El Paso

3.1 Provide business friendly permitting and inspection processes

3.2 Improve the visual impression of the community

PZST19-00007



This map is designed for illustrative purposes only. The features depicted here are approximate and more site-specific studies may be required to draw accurate conclusions. Enlargements of this map to scales greater than its original can induce errors and may lead to misinterpretations of the data. The Planning & Inspections Department Planning Division makes no claim to its accuracy or completeness.



Subject Property

0 50 100 200 300 400 Feet



THANK YOU

