



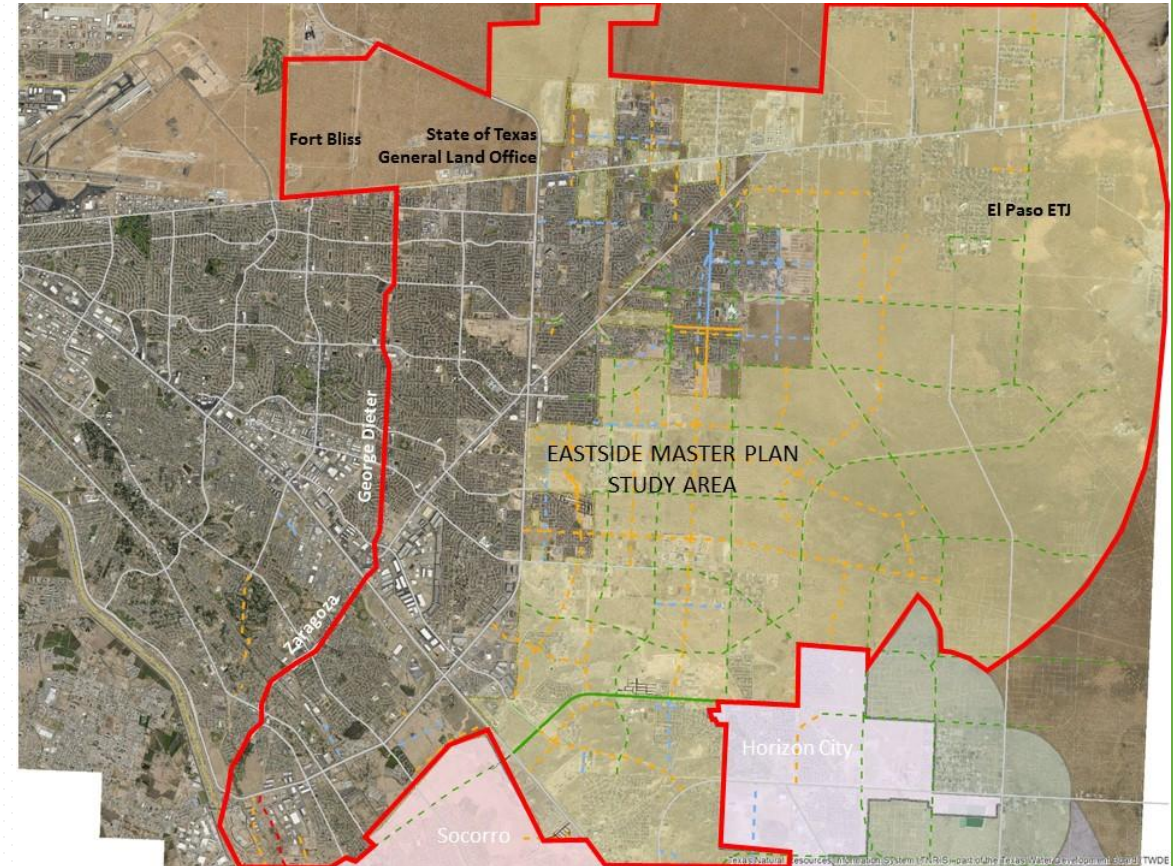
EASTSIDE INITIATIVES



and Associated Integration and
Alignment with Other Initiatives around
the City

- Over the coming City Council meetings, staff will be presenting ongoing initiatives including:
 - Plans
 - Projects
 - Developments

- Strategies
- Annexation
- Extension of Roadways and Other Municipal Needs



- Study will complete analysis with recommendations for:
 - Facilities
 - Staffing
 - Rollout
 - Fire Department HQ and Maintenance Facilities incorporation



Corridor Studies

- Dyer
- Alameda
- Synergy between studies and Eastside Master Plan



- [illegible]


- Define and highlight entrances to select iconic City corridors
- Potential catalyst for economic growth
- Enhance sense of place

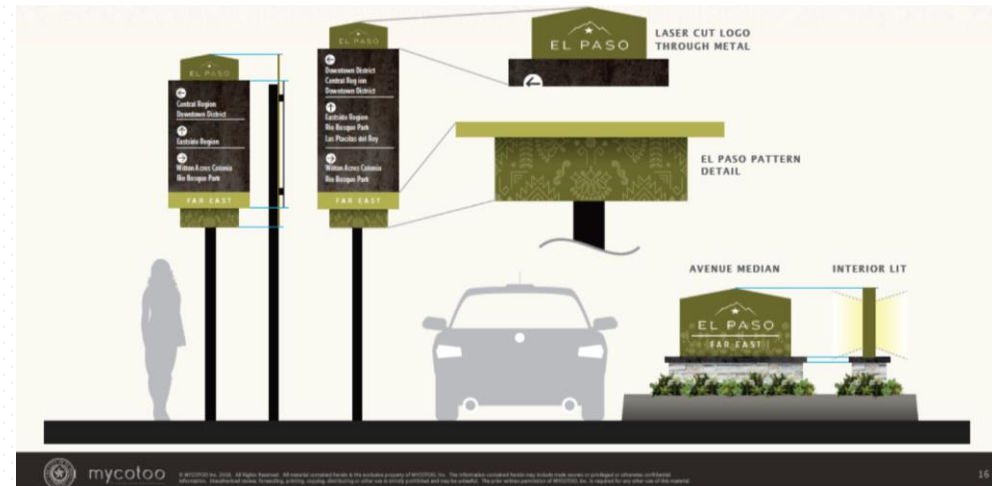


Arterial Improvements

- Resurfacing
- Lighting and Landscaping



- Create identity for the City
 - Assist residents and visitors with directions
 - Opportunity to further implement with funded arterial projects
- 



- Investments occurring
- Jobs retained and expanded
- Opportunities for future TIRZ partnerships



- Provide structure to collaborate between 14 different agencies
- Create connected community
- Shared focus to deliver high quality

- Best Practices through synergy and alignment
- Comprehensive Approach
- Alignment with Economic Development and Planning Department
- Groundwork for Funding for the Public Facilities Needs identified through studies and outreach.

THANK YOU