



3334 Lincoln - PZRZ18-00022



This map is designed for illustrative purposes only. The features depicted here are approximate and more detailed studies may be required to draw accurate conclusions. Enlargements of this map to scales greater than its original can introduce errors and may lead to misinterpretations of the data. The Planning & Inspections Department Planning Division makes no claim to its accuracy or completeness.

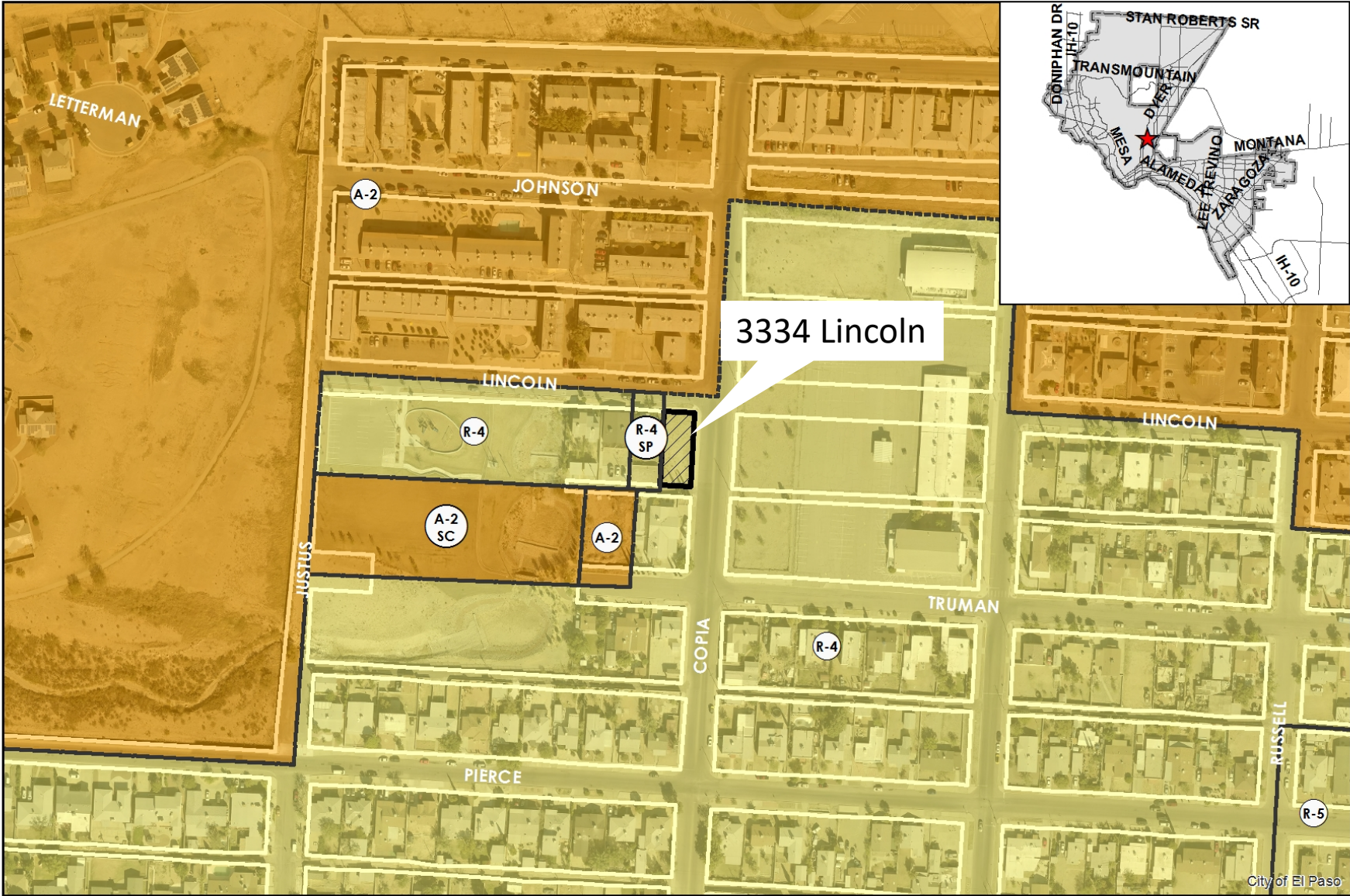


0 75 150 300 450 600 Feet





PZRZ18-00022



This map is designed for illustrative purposes only. The features depicted here are approximate and more site-specific studies may be required to draw accurate conclusions. Enlargements of this map to scales greater than its original can induce errors and may lead to misinterpretations of the data. The Planning & Inspections Department Planning Division makes no claim to its accuracy or completeness.



Subject Property

0 75 150 300 450 600 Feet

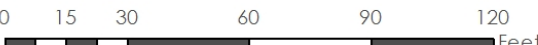




PZRZ18-00022

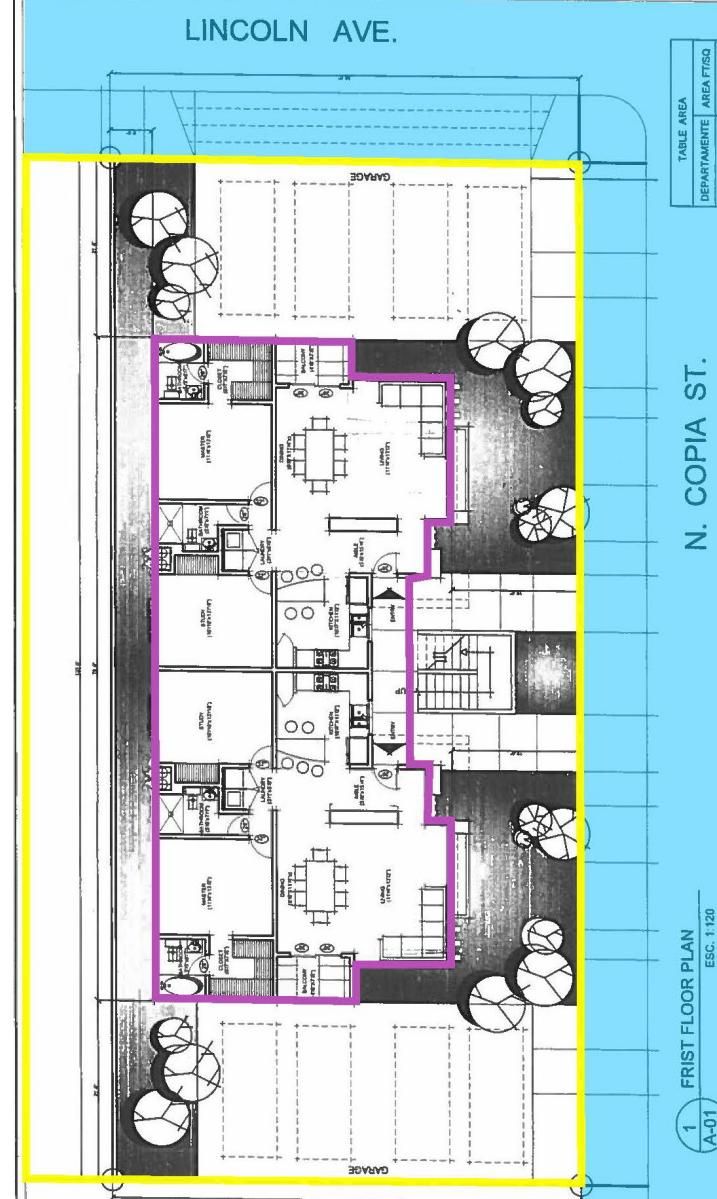


This map is designed for illustrative purposes only. The features depicted here are approximate and more site-specific studies may be required to draw accurate conclusions. Enlargements of this map to scales greater than its original can induce errors and may lead to misinterpretations of the data. The Planning & Inspections Department Planning Division makes no claim to its accuracy or completeness.





Conceptual Site Plan – 3334 Lincoln



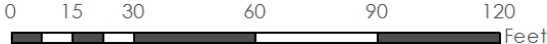


PZRZ18-00022



City of El Paso

This map is designed for illustrative purposes only. The features depicted here are approximate and more site-specific studies may be required to draw accurate conclusions. Enlargements of this map to scales greater than its original can induce errors and may lead to misinterpretations of the data. The Planning & Inspections Department Planning Division makes no claim to its accuracy or completeness.



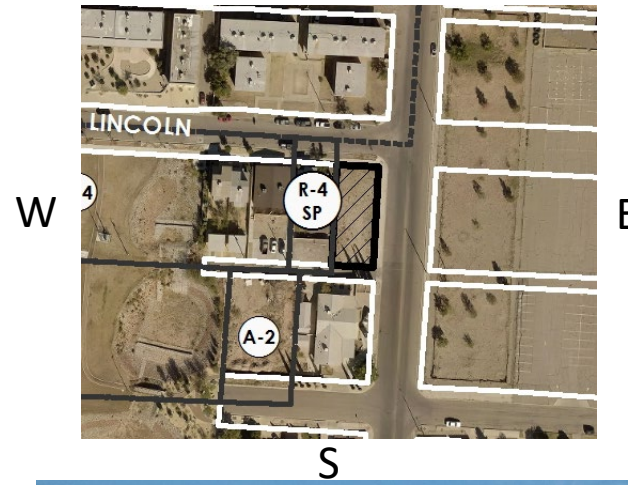


3334 Lincoln



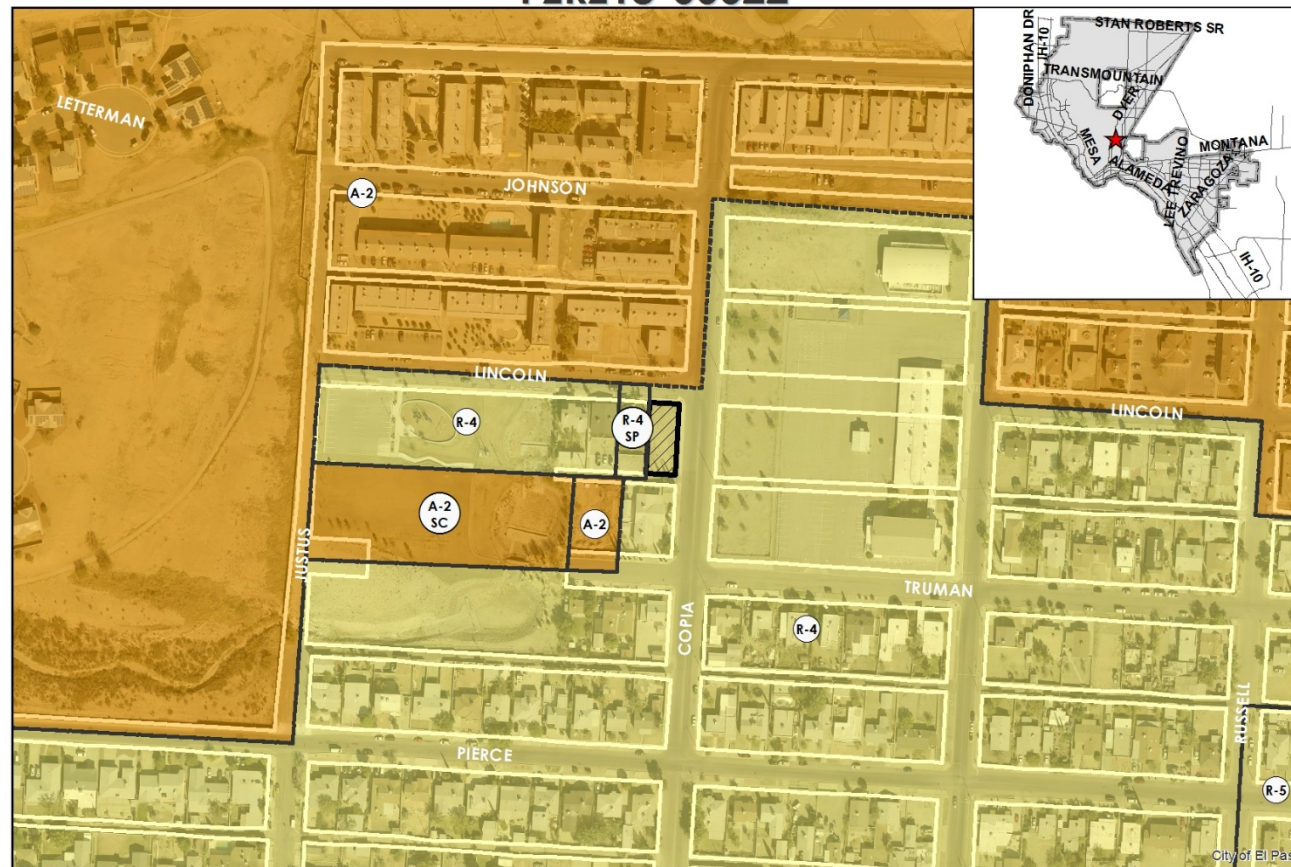


N





PZRZ18-00022



This map is designed for illustrative purposes only. The features depicted here are approximate and more site-specific studies may be required to draw accurate conclusions. Enlargements of this map to scales greater than its original can induce errors and may lead to misinterpretations of the data. The Planning & Inspection Department Planning Division makes no claim to its accuracy or completeness.



Subject Property

0 75 150 300 450 600 Feet



Staff has received no support or opposition to this rezoning request.

Staff recommends approval of the rezoning at 3334 Lincoln Avenue from an R-4 zoning district to an A-2 zoning district.