

**CITY OF EL PASO, TEXAS**  
**AGENDA ITEM DEPARTMENT HEAD'S SUMMARY FORM**

**DEPARTMENT:** Community and Human Development  
**AGENDA DATE:** October 16, 2018  
**CONTACT PERSON/PHONE:** Nicole Ferrini, Director (915) 212-1659  
**DISTRICT(S) AFFECTED:** All Districts

**SUBJECT:**

Request for City Council to adopt a resolution establishing both the Census 2020 Action Team and the Census 2020 Paso Del Norte Complete Count Committee as a mechanism to increase participation in the decennial census directly affecting the amount of federal revenue distributed for roads, schools, libraries, senior centers, day care centers, and hospitals.

**BACKGROUND / DISCUSSION:**

- Texas receives over **\$43 Billion** per year based on Decennial Census data.
- Per Capita allocation in Texas is **\$1,578**
- Census data is used in many ways.**
  - Redistricting of state legislative districts.
  - Forecasting of future transportation needs for all segments of the population.
  - Determining areas eligible for housing assistance and rehabilitation loans.
  - Assisting federal, tribal, state, and local governments in planning and implementing programs and services and emergency response.
  - Designing facilities for people with disabilities, the elderly, and children.

A Census working group assigned to outline the format of the Action Team and Complete Count Committee was assembled in April 2018 and includes:

- The City of El Paso is leading through the Office of the Mayor
  - Assigned the **Chief Resilience Officer** as Liaison and Team Lead
- The County of El Paso has reached out through the Office of Commissioner Stout
  - Assigned the **Senior Policy Advisor** as Liaison
- The State Delegation has reached out and supported the formation of the Complete Count Committee.
- US Census is supporting through the Regional Office
  - Assigned Paulina Lopez as **Partnership Specialist for El Paso** and the surrounding communities

\*\*\*\*\*REQUIRED AUTHORIZATION\*\*\*\*\*

**LEGAL:** (if required) \_\_\_\_\_ **FINANCE:** (if required) \_\_\_\_\_

**DEPARTMENT HEAD:** \_\_\_\_\_  
(Example: if RCA is initiated by Purchasing, client department should sign also)  
*Information copy to appropriate Deputy City Manager*

**APPROVED FOR AGENDA:**

**CITY MANAGER:** \_\_\_\_\_

**DATE:** \_\_\_\_\_

**A RESOLUTION CREATING A CENSUS 2020 ACTION TEAM AND COMPLETE COUNT COMMITTEE TO PLAN AND CONDUCT LOCAL EDUCATIONAL INITIATIVES, PUBLICITY, AND PROMOTIONAL ACTIVITIES TO INCREASE COMMUNITY AWARENESS AND PARTICIPATION IN CENSUS 2020.**

**WHEREAS**, the United States Census has been performed every ten years since 1790, with the last census in 2010; and

**WHEREAS**, El Paso County's decennial census population count directly affects the amount of federal revenue distributed for roads, schools, libraries, senior centers, day care centers, and hospitals; and

**WHEREAS**, accurate census information is critical to planning for future growth, development and social needs of the City of El Paso; and

**WHEREAS**, the county welcomes assistance and advice from community-based organizations, the school districts, local businesses and the media in counting the entire local population, including traditionally hard to count, or undercounted, populations; and

**WHEREAS**, the more informed residents become about the 2020 census operations, the probability of a successful enumeration will be increased; and

**WHEREAS**, everyone, whether a United States citizen, an immigrant or an undocumented worker needs the goods and services provided by local and state government, paid for, in part, by federal grants.

**NOW THEREFORE, BE IT RESOLVED BY THE CITY COUNCIL OF THE CITY OF EL PASO:**

1. A Census 2020 Action Team is established to coordinate efforts and deploy resources across the community. Action Team will sunset on August 2020.
  - a. The Census 2020 Action Team will be made up of:
    - i. One Representative of Elected Leadership at the City of El Paso
    - ii. One Representative of Elected Leadership at the County of El Paso
    - iii. One Representative of the State House
    - iv. One Representative of the State Senate
    - v. One Representative of the Area Council of Governments
    - vi. One Representative of Region 19
    - vii. Two citizens of the County of El Paso.
  - b. All representatives will be appointed jointly by the Mayor and the County Judge.
  - c. The City of El Paso Department of Community + Human Development alongside County of El Paso Staff will provide support staff to the Census 2020 Action

Team. Staff will be responsible for coordination between the established Complete Count Committee and the Action Team.

- d. The Census 2020 Action Team will provide regular updates and recommendation for deployment of resources to City Council and Commissioners Court via assigned staff on a quarterly basis through completion of the 2020 Census effort. The Action Team can meet to fulfill its purpose as deemed necessary by the Action Team.
2. The Census 2020 Complete Count Committee is established and shall be called the **Paso Del Norte Complete Count Committee**.
    - a. The Chief Resilience Officer of the City of El Paso will accept applications from citizens and groups that are interested in serving in the Paso Del Norte Complete Count Committee. The Paso Del Norte Complete Count Committee members shall include representation from the following community groups:
      - i. Governing Officials
      - ii. Business Community
      - iii. Education Sector
      - iv. Community / Nonprofit Organizations
      - v. Faith Based Groups
      - vi. Media
      - vii. Youth
      - viii. Healthcare
      - ix. citizens of El Paso County
    - b. The purpose of the Paso Del Norte Count Committee is to provide advice and assistance to the Census 2020 Action Team in obtaining the most accurate and complete count for Census 2020 by increasing the response rate through focused, structured community minded action. The committee will utilize the knowledge and expertise of each committee member to implement a census awareness campaign targeted to residents.
    - c. The census effort will be driven from the Complete Count Committee as an inclusive community effort supported by the 2020 Census Action Team.
    - d. Duties and responsibilities of the committee shall include formulation of strategies to enhance the region's response rate to Census 2020.

- i. The committee will utilize local knowledge, expertise and influence of each committee member to design and implement a census awareness campaign targeted to the various communities across the region.
3. Committee members shall serve from October 2018 through August 2020 at which time the Committee shall dissolve. No dissolving resolution is necessary.
  - a. Any organization represented in the committee shall appoint a designated committee member and replace a committee member who steps down or can no longer fulfill the responsibilities entailed in service to the committee.
  - b. The Committee will engage once a month, but may meet more often leading into 2020.

**PASSED AND APPROVED** this \_\_\_\_\_ day of \_\_\_\_\_, 20\_\_.

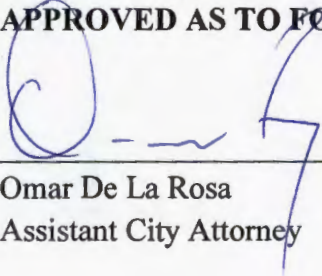
**THE CITY OF EL PASO**

\_\_\_\_\_  
Dee Margo  
Mayor


**ATTEST:**

\_\_\_\_\_  
Laura Prine  
City Clerk

**APPROVED AS TO FORM:**

  
\_\_\_\_\_  
Omar De La Rosa  
Assistant City Attorney

**APPROVED AS TO CONTENT:**

  
\_\_\_\_\_  
for Nicole Ferrini, Director **ARTURO RUBIO**  
Community & Human Development

## 2020 Census Timeline

### 2018

- Tribal leader, governor, or highest elected local official or community leader determines Complete Count Committees (CCCs) structure.
- CCCs receive 2020 Census training.

### 2019

- Continue establishing CCCs.
- Open Area Census Offices.
- CCCs develop strategy and work plan.

### 2020

- CCCs begin community organization mobilization.
- 2020 Census advertising campaign begins in early 2020.
- CCCs support the 2020 Census.
- CCCs encourage self-response.

### April 1, 2020 – CENSUS DAY

- CCCs urge households who do not respond to cooperate with census takers.

## Contact Information

For additional information about the Complete Count Committees program, please contact your regional census office.

### Please contact:

**ATLANTA**  
Atlanta.rcc  
.partnership  
@2020census.gov

**CHICAGO**  
Chicago.rcc  
.partnership  
@2020census.gov

**DALLAS**  
Dallas.rcc  
.partnership  
@2020census.gov

**LOS ANGELES**  
Los.Angeles.rcc  
.partnership  
@2020census.gov

**NEW YORK**  
New.York.rcc  
.partnership  
@2020census.gov

**PHILADELPHIA**  
Philadelphia.rcc  
.partnership  
@2020census.gov

### If you reside in:

Alabama, Florida,  
Georgia, Louisiana,  
Mississippi,  
North Carolina,  
and South Carolina

Arkansas, Illinois,  
Indiana, Iowa,  
Michigan, Minnesota,  
Missouri, and  
Wisconsin

Arizona, Colorado,  
Kansas, Montana,  
Nebraska, New  
Mexico, North  
Dakota, South  
Dakota, Oklahoma, Texas,  
Utah, and Wyoming

Alaska, California,  
Hawaii, Idaho,  
Nevada, Oregon,  
and Washington

Connecticut, Maine,  
Massachusetts, New  
Hampshire, New Jersey,  
New York, Rhode Island,  
Vermont, and Puerto Rico

Delaware, District of  
Columbia, Kentucky,  
Maryland, Ohio,  
Pennsylvania, Tennessee,  
Virginia, and West Virginia

## Complete Count Committees



## The 2020 Census is almost here!

The 2020 Census provides an opportunity for everyone to be counted. Tribal, state, and local governments; community-based organizations; faith-based groups; schools; businesses; the media; and others play a key role in developing partners to educate and motivate residents to participate in the 2020 Census.

When community members are informed, they are more likely to respond to the census. Through collaborative partnerships, the U.S. Census Bureau and community leaders can reach the shared goal of counting EVERYONE in 2020.

### **The Complete Count Committees (CCC) program is key to creating awareness in communities all across the country.**

- CCCs utilize local knowledge, influence, and resources to educate communities and promote the census through locally based, targeted outreach efforts.
- CCCs provide a vehicle for coordinating and nurturing cooperative efforts between tribal, state, and local governments; communities; and the Census Bureau.
- CCCs help the Census Bureau get a complete count in 2020 through partnerships with local governments and community organizations.

# Get Started

## **WHO?**

Tribal, state, and local governments work together with partners to form CCCs to promote and encourage response to the 2020 Census in their communities. Community-based organizations also establish CCCs that reach out to their constituents.

## **WHAT?**

A CCC is comprised of a broad spectrum of government and community leaders from education, business, healthcare, and other community organizations. These trusted voices develop and implement a 2020 Census awareness campaign based upon their knowledge of the local community to encourage a response.

## **WHEN?**

The formation of CCCs is happening NOW! Leaders are identifying budget resources and establishing local work plans. In 2020, they will implement the plans and lead their communities to a successful census count.

## **WHY?**

The primary goal of the 2020 Census is to count everyone once, only once, and in the right place.

Community influencers create localized messaging that resonates with the population in their area. They are trusted voices and are best suited to mobilize community resources in an efficient manner.

## **HOW?**

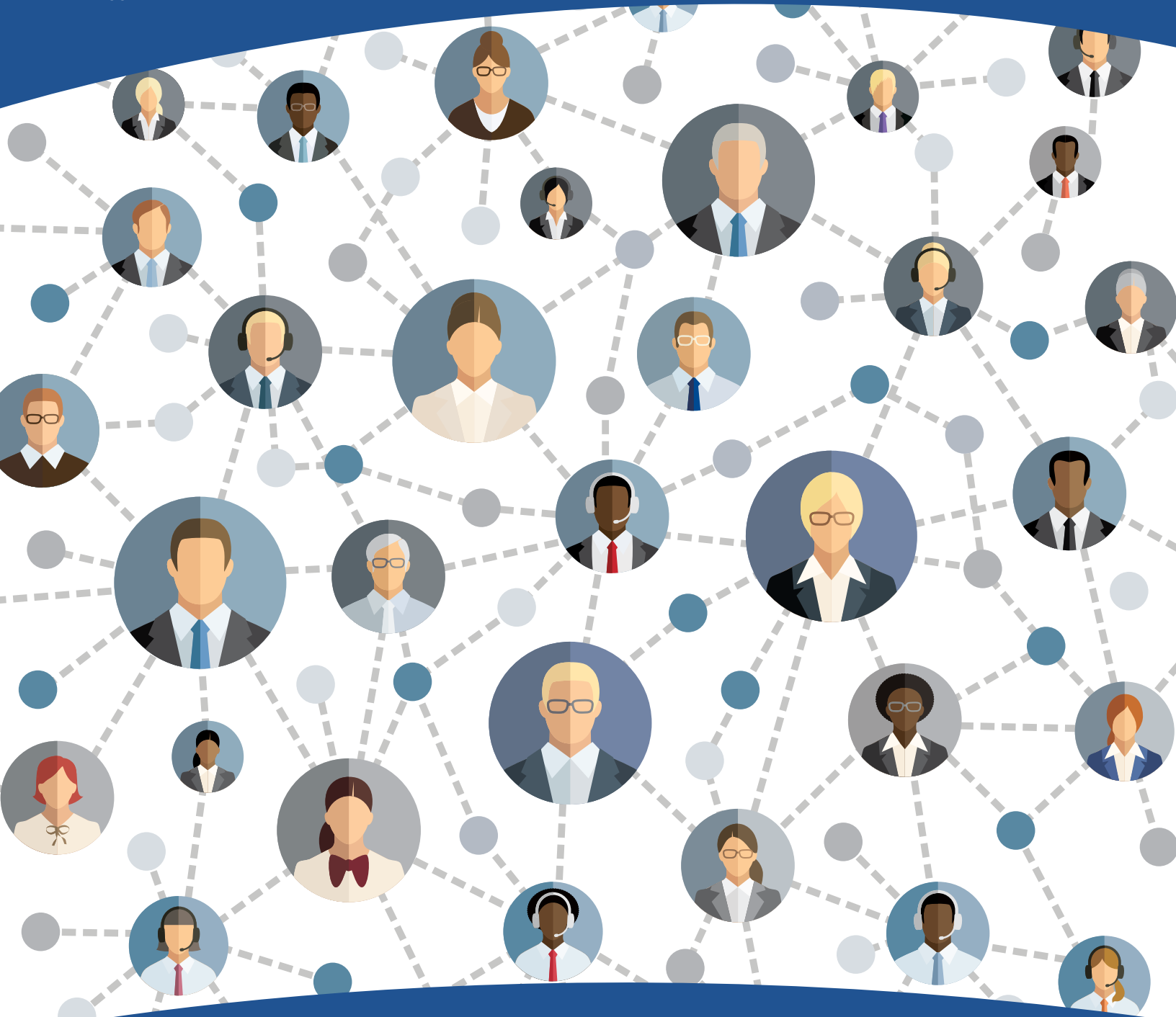
It's up to all of us! CCCs know the best way to reach the community and raise awareness. Some activities could include:

- Holding CCC kickoff meetings with media briefings.
- Participating in Census rallies or parades.
- Coordinating Census unity youth forums.
- Hosting Interfaith breakfasts and weekend events.
- Encouraging the use of Statistics in Schools classroom resources.
- Incorporating census information in newsletters, social media posts, podcasts, mailings, and websites.
- Helping recruit census workers when jobs become available.

# 2020 Census Complete Count Committee

## *Training Manual*

D-1255



# CONTENTS

---

Introduction . . . . .	1
Chapter 1: Decennial Census Overview . . . . .	3
Chapter 2: SCCC/CCCs: Overview . . . . .	5
Chapter 3: Forming State Complete Count Commissions and Complete Count Committees . . . . .	7
Chapter 4: Timeline . . . . .	11
Chapter 5: Planning Your Work and Working Your Plan . . . . .	15
Chapter 6: 2020 Census Integrated Communications Campaign . . . . .	19
Chapter 7: What to Expect From Your U.S. Census Bureau Staff Liaison . . . . .	21
Chapter 8: Summary and Closing . . . . .	23

# Introduction



## COVERED TOPICS

The State Complete Count Commission/Complete Count Committee (SCCC/CCC) manual provides information to educate SCCC/CCC leaders and members about the 2020 Census and their role in the committees. The goal of this manual is to equip SCCC/CCC leaders with the information they need to train their members on ways they can help promote participation in the census.

Content covers a combination of topics, such as:

- Background and structure of the committees.
- Recommended subcommittees.
- Resources and tools available to help drive participation in the 2020 Census.
- Lessons learned from the 2010 Census.
- Discussion on community needs, developing strategies, and creating an effective work plan.

This manual also includes details about the purpose of the decennial census and the Integrated Communications Campaign in support of the 2020 Census.

### About This Training

The Regional Partnership staff will use this manual to help state, local, and tribal governments and community leaders/members form and manage effective SCCC/CCCs. On the following pages you will find background information on the U.S. Census Bureau, details about the decennial census, and tips for ensuring a successful count in 2020. The goal of this manual is to “train the trainers,” so SCCC/CCC leaders

are fully equipped to manage the committees and train their own committee members to lead and operate effectively.

The following documents should be included in the training package:

- SCCC/CCC Guide D-1280
- SCCC/CCC Program Brochure D-1256
- SCCC/CCC Training Manual D-1255

### Overview of the SCCCs/CCCs

The SCCCs/CCCs are one of the core strategic elements of the Census Bureau’s partnership program for the 2020 Census. A SCCC differs from a CCC because it is formed by an executive order or by a legislative act within a state.

These committees exist to plan and implement locally-based outreach campaigns that raise awareness of the census and ultimately drive self-response and participation rates. The SCCC/CCCs can achieve this goal through grassroots outreach efforts that promote the importance and benefits of responding to the census. One of the key reasons these committees are effective in raising awareness is because of the members’ knowledge and understanding of what it takes to engage and inspire others within their community.

The Census Bureau Partnership Specialists will serve as technical advisors and information resources for all SCCC/CCCs; the daily management responsibilities rests solely with the highest elected official or community leader serving as chair of the SCCC/CCC.

## Background and Structure of SCCC/CCCs

The highest elected officials of every state, local, and tribal government will receive a letter from the Census Bureau Director requesting and encouraging them to partner with the Census Bureau and to form a SCCC/CCC for the 2020 Census.

State and local government SCCC/CCCs consist of influential community members and trusted voices who are appointed by the highest elected government official. Typically, committee members are experts in the following areas:

- Government
- Education
- Media
- Technology
- Community organizations
- Workforce developments
- Faith-based institutions
- Businesses
- Other, based on community needs

The Census Bureau encourages community leaders in hard-to-count areas to form CCCs. Hard-to-count areas may, for example, have:

- Hidden or overcrowded housing.
- Populations that speak little or no English.
- Off-campus apartments.
- New immigrant populations.
- People displaced by natural disasters such as floods, fires, and hurricanes.
- Children under 5.
- Gated communities.

One of the principal benefits of the SCCC/CCC program is the synergistic effect of working together as trusted voices in their communities to spread the word about the importance of the census and value of participating/being counted in the census process. Every time a SCCC/CCC is established, the Census Bureau is one-step closer to conducting the most successful census ever.

Getting an accurate count can't be achieved without local involvement and support. Establishing a SCCC/CCC can significantly help ensure your community is counted.

# Chapter 1



## DECENNIAL CENSUS OVERVIEW

### U.S. Constitution

The United States began conducting a census of population and housing in 1790. The U.S. Constitution, Article 1, Section 2, mandates an apportionment of representatives among the states for the House of Representatives every 10 years.

Apportionment is the process of dividing the 435 seats in the U.S. House of Representatives among the 50 states. By law, the U.S. Census Bureau must deliver a report of population counts to the president of the United States within 9 months of Census Day (on or before December 31). The report will provide the population counts by state and the number of seats in the U.S. House of Representatives apportioned to each state.

### The Census Is Confidential and Required by Law

All responses to Census Bureau surveys and censuses are confidential and protected under Title 13 of the U.S. Code. Under this law, the Census Bureau is required to keep respondent information confidential. We will never share a respondent's personal information with immigration enforcement agencies, like ICE; law enforcement agencies, like the FBI or police; or allow it to be used to determine their eligibility for government benefits. The results from any census or survey are reported in statistical format only.

Individual records from the decennial censuses are by law (Title 44, U.S. Code) confidential for 72 years.

Furthermore, under Title 13, U.S. Code, all Census Bureau employees swear a lifetime oath to protect respondent data. It is a felony for any Census Bureau employee to disclose any confidential census

information during or after employment, and the penalty for wrongful disclosure is up to 5 years imprisonment and/or a fine of \$250,000.

### Using Technology in the 2020 Census

There are some important changes in 2020:

- For the first time, you will be able to respond online, by mail, or by phone.
- We will use data that the public has already provided to cut down on in-person follow up visits to nonresponding households.
- We are building a more accurate address list and automating our field operations—all while keeping your information confidential and safe.

### The Many Uses of Census Data

Census data are used in many ways. Some examples include:

- Distribution of more than \$675 billion annually in federal funds back to state, local, and tribal governments.
- Redistricting of state legislative districts.
- Forecasting of future transportation needs for all segments of the population.
- Determining areas eligible for housing assistance and rehabilitation loans.
- Assisting federal, tribal, state, and local governments in planning and implementing programs and services and emergency response.
- Designing facilities for people with disabilities, the elderly, and children.

# Chapter 2

## SCCCs/CCCs: Overview



# THE IMPORTANCE OF COMPLETE COUNT COMMITTEES

## What Is a SCCC/CCC?

A State Complete Count Commission/Complete Count Committee (SCCC/CCC) is a volunteer committee established by tribal, state, and local governments and community leaders or organizations to increase awareness and motivate residents to respond to the 2020 Census. SCCC/CCCs serve as state and local “census ambassador” groups that play an integral part in ensuring a complete and accurate count in the community in the 2020 Census. Success of the census depends on community involvement at every level. The U.S. Census Bureau cannot conduct the 2020 Census alone.

## Government SCCC/CCC

The first type of SCCC/CCC are Tribal Complete Count Committees, State Complete Count Commissions, and local government complete count committees. These are committees of government officials and community members appointed by the highest elected officials of a tribal, state, or local government for the purpose of developing and implementing a census awareness campaign that motivates their communities to complete the census questionnaire thoroughly and return it in a timely manner. Government SCCC/CCCs may be small (5–20 members), medium (20–50 members), or large (50–100 or more members). State Complete Count Commissions differ from Complete Count Committees because they are initiated through the legislature or by executive order.

## Community-Based CCC

The second type of CCCs are comprised of a team of community leaders and/or organizations brought together to design an outreach plan for hard-to-count areas or populations in their community. Their focus is to encourage individuals in their community to respond to the 2020 Census by Internet, mail, or by phone. Community CCCs are usually small to medium in size with about 5 to 30 members.

## Lessons Learned From the 2010 Census

Since the 1980 Census, Complete Count Committees have played a major role in raising awareness of the census among all groups and populations. The expertise, influence, knowledge, and experience of committee members are invaluable resources to a complete and accurate count. The following are lessons learned and recommendations for future committees:

- These committees were a prime example of partners taking ownership of the census process and leading outreach efforts. Partnership specialists said the Complete Count Committee Initiative was among the most effective strategies for comprehensively reaching the hard-to-count populations.
- Although the CCC Initiative was very successful, it needs to start sooner. Previously, it began 2 years before Census Day. By starting earlier, it allows for better integration into organization planning and budgets.

## Recommendations for Successful SCCC/ CCCs

The Census Bureau has learned from previous censuses and recommendations for success in 2020. These recommendations are based on information gathered from the committees, focus group sessions, and summary reports submitted by Partnership Specialists.

- Customize and design the committee to reflect a true snapshot of the community.
- Use technology effectively. Communicate with committee members through electronic mediums.
- Include diverse perspectives to achieve objectives. Assess which groups—locally and nationally—are able to provide support and assistance.
- Choose a committee chair who is committed, knowledgeable, and active in the community.
- Select Subcommittee Chairpersons who are purpose-driven, result oriented, and gets results.
- Review CCC activities in your area from the 2010 Census. Repeat what worked well. Eliminate what did not work well. Modify activities and incorporate new innovative activities in your plan, as needed.
- Incorporate a census awareness in all existing community festivals and activities scheduled.
- Recruit experienced members to motivate and support new members.
- Keep detailed records of SCCC/CCCs' strategies and activities so that the program can be better assessed and best practices be replicated.

# Chapter 3

## Forming State Complete Count Commissions and Complete Count Committees



## HOW TO GET STARTED

### SCCC/CCC Structure

The U.S. Census Bureau's recommended structure for State Complete Count Commissions/Complete Count Committees (SCCC/CCC) maximizes the effectiveness of committee outreach strategies in their communities. However, the committees are encouraged to adopt their own structure based on the unique community needs and develop a strategy to meet them. A committee may choose to create subcommittees dedicated to these needs. Regardless of the structure, government committees should include members with experience in the following areas:

- Government
- Workforce development
- Faith-based community
- Education
- Media
- Technology
- Community organizations
- Business

People who are selected to serve on the SCCC/CCC and the subcommittees are expected to communicate the importance of the 2020 Census to their peer groups and guide them in implementing strategies to increase the count in their respective communities. The committee will use multiple strategies and tactics to deliver key messages during different phases of the census.

### State Complete Count Commissions

State Complete Count Commissions are governed the highest level within each state. Governors create the commission by appointing individuals to serve as members on the commission. State officials often have a good understanding of the economic impact of a complete count and are highly motivated to develop a comprehensive outreach plan. The commission is usually chaired by an individual designated by the Governor, such as the Governor's Liaison or staff from the State Data Center. State Complete Count Commissions may be fairly large with anywhere from 20 to 100 members. SCCC's consist of influential community leaders who are charged with developing a census awareness campaign that:

- Encourages county and municipal governments to form CCCs.
- Raises awareness of the census throughout the state.
- Motivates every household in the state to participate in the census by responding online, by mail, or by phone.
- Increases the state's self-response rate.

The size of the SCCC is determined by each state. In addition, many governors and the legislature may allocate funding to support the activities of the SCCC. States view this funding as a sound investment in the future. Failure to count each person living in the state could result in a substantial loss of revenue for the next decade for state and local governments.

The commission members may include:

- A governor or his/her designee.
- Members such as majority/minority leaders of the state house or designee, heads of major counties, mayors of major municipalities, heads of philanthropic organizations, and heads of major business associations and community organizations.

State commissions may operate with or without subcommittees. However, many state governments prefer the subcommittee structure. In those cases, once the SCCC members have been identified, chairpersons may divide the members into subcommittees based on activities that the commission plans to undertake. For example, a media subcommittee may be formed to identify local officials and other persons of influence to record public service announcements (PSAs) and appear on local television and radio shows about the census. An education subcommittee might target schools, colleges, and universities with promotional materials and ensure that Statistics in Schools materials are used by K-12 schools across the state. Another subcommittee may be a business subcommittee that targets businesses and encourages them to post census materials and sponsor local events. Other possible subcommittees may include a faith-based focus to reach religious groups in a community or a youth focus to target organizations providing services to children such as Head Start or day care centers.

It is important to note the type of subcommittee created is based on the needs of the state or the focus of the commission.

## **Tribal or Local Government CCCs**

Tribal and local Government CCCs are formed by the highest elected official in a local government, regardless of size. This includes tribal leader or chairman, local governments in cities, counties, towns, and villages. Tribal and local government CCCs are charged with developing and implementing a census awareness campaign that motivates every person living in every household to be counted in the 2020 Census in a timely manner.

## **Community CCCs**

Community CCCs are usually formed in support of specific hard-to-count communities. Grassroots community organizing efforts are essential to reach

populations who have not responded well in previous censuses or who have a history of being undercounted in the census. In some instances, community CCCs are formed to fill a gap in areas where there is no government sponsored CCC.

Community CCCs usually include representation from the following areas of the community:

- Businesses.
- Educators.
- Media representatives.
- Faith-based organization leaders.
- Community-based organization leaders.
- The entire group selects the chairperson and subcommittee chairpersons. Committee members determine the committee size.

## **Key Points**

Key points to remember about the SCCC/CCC structure include:

- The committees should be all-inclusive, addressing the various racial, ethnic, cultural, and geographic considerations of the community.
- The Census Bureau staff serve as liaisons and information resources for the committees. The Census Bureau provides technical assistance in developing the committees but do not manage the committees.
- The committee operations are governed by the highest elected official or community leader. Responsibility then falls to the chairperson, the committee members, and finally to the community.

## **Recommended Subcommittee Structure**

It is essential that the committees address and reflect key facets of the community. The decision to form subcommittees is based on community need and the opportunities and challenges in reaching areas or populations that may not respond or may potentially be undercounted. The Census Bureau recommends including subcommittees focused on:

- Government
- Business
- Education
- Housing

- Media, communications, and technology
- Faith-based
- Community organizations
- Senior citizens
- Outreach
- Recruitment
- Philanthropic

It is important to note that in the past, committees have also created subcommittees devoted to data and maps, youth, homeless, LGBTQ, veterans, special housing, recruiting, immigrants, and homeowners associations. These subcommittees can help reach the most challenging areas to count.

Different subcommittee structures and sizes are appropriate for different types of committees. The subcommittee structure is determined by the size and needs of the community it serves.

If the SCCCs/CCCs choose to form subcommittees, here are examples of the various subcommittees structures:

### **Government Subcommittee**

#### ***Focus***

- Represents local government in all programs between the Census Bureau and local government, such as new construction program and others.
- Elected officials are aware of and are included in committee activities.

#### ***Composition***

- Elected officials, city/county planners, demographers, cartographers, and municipal employees.

### **Education Subcommittee**

#### ***Focus***

- Creates, facilitates, and coordinates census awareness activities among the various educational levels from prekindergarten to post-graduate, including day care centers, Head Start programs, and parochial, private, charter, and home schools.
- Ensures the wide distribution and awareness of the Statistics in School program and materials.
- Works with area colleges and universities to implement Census Bureau's Higher Education program and raise awareness among students housed on and off campus.

- Raises awareness through adult education and English Language Learner Programs.

#### ***Composition***

- Educational leaders, superintendents, principals, school district administrators, charter school administrators, teachers, students, Parent Teacher Organizations (PTOs), teachers organizations, and university housing coordinators.

### **Faith-Based Subcommittee**

#### ***Focus***

- Facilitates and coordinates census awareness activities between faith-based institutions and organizations, ministerial alliance, ecumenical councils, and seminary administrators.

#### ***Composition***

- Faith-based leaders from ALL denominations, ministerial alliances, ecumenical councils, and seminary administrators.

### **Media, Communications, and Technology Subcommittee**

#### ***Focus***

- Assists the committee in communicating census messages to ALL.
- Facilitates communication of the committee messages through multiple channels, such as ethnic media, local newsletters, electronic bulletins, local Web sites, and utilizing different social media venues.
- Assists the community organizations in utilizing census toolkit materials that enable organizations to innovate.
- Countering false and misinformation about the census.

#### ***Composition***

- Local media representative, communication directors, bloggers, publishers and editors of neighborhood newspapers, graphic designers, social media users, and ethnic media representatives.

### **Community Organizations Subcommittee**

#### ***Focus***

- Coordinates the building of coalitions with community organizations that serve the special needs of various racial, ethnic, cultural, civic, fraternal,

and advocacy groups, immigrants, and people with disabilities.

### ***Composition***

- Executive directors from community organizations, Community Block Grant (CDBG) directors, leaders of fraternities and sororities, membership and nonmembership organizations, and advocacy groups. (Most major cities have offices that cater to the needs of immigrant, refugee, and minority populations, i.e., Mayor's Office of the Latino, African Affairs (DC), and Department of Neighborhood/Super Neighborhood councils (City of Houston).)

## **Business Subcommittee**

### ***Focus***

- Coordinates and generates census awareness activities that involve businesses of all types and sizes.
- Creates a unifying element that touches every household within the community.
- Encourages their employees to respond to the census.

### ***Composition***

- Chambers of Commerce, business alliances, neighborhood business associations, franchise owners and operators, financial institution officers (i.e., bank managers), owners of small community and ethnic businesses, and utility company managers.

## **Recruitment Subcommittee**

### ***Focus***

- Distributes recruiting materials received from Partnership Specialists and assists Partnership Specialists in securing donations for space to train employees.
- Publicizes Census Bureau job openings using all available resources, including local festivals and job fairs.
- Enhances the ability of census to plug into existing recruiting resources.

### ***Composition***

- Employment security staff and staff from job training agencies (i.e., job training agencies such as Goodwill, United Way, and city, state, and federal employment agencies).

# Chapter 4

## Timeline



## KEY COMMUNICATIONS PHASES

This timeline describes some of the phases of the 2020 Census Campaign, SCCC/CCC may find beneficial in developing outreach strategies for their work plan.



### Education Phase (2018–2019)

The education phase is the period from 2018 through December 2019. During this period, key community and municipal leaders receive training, informational materials, and one-on-one meetings with the U.S. Census Bureau partnership staff about the importance of the census and the need for local support to ensure a successful count.

This is also the period when the SCCC/CCC leadership develops the mission and message with all members. They identify how to bring awareness to the community.

The public must understand that the census is their civic responsibility that affects people of all ages, races, cultures, and ethnicities, regardless of citizenship status. Census data affects the entire community.

### Awareness Phase—April 2019

The awareness phase of the 2020 Census officially starts in January 2020. This phase overlaps with the education phase. Beginning April 1, 2019, government and community leaders throughout the nation participate in activities highlighting the message that the 2020 Census is easy, important, and safe.

### Motivation Phase (March–May)

The motivation phase starts in March 2020. During this phase, the committees implement activities of the work plan through their government, faith, community, business, media, and recruitment partners. This guarantees every person living in the United States will encounter census messages during time of work, play, leisure, school, and worship.

### April 2020

In April 2020, the focus is to motivate each household to take ownership of the census, make a conscious decision to participate, know where to go for assistance in answering the census, and be poised and ready to answer questions on April 1, 2020.

## April 1, 2020—Census Day is here!

One of the primary goals of the CCC is to increase the response rate to the 2020 Census and reduce the number of households that do not complete their census.

## Reminder Phase (May–July 2020)

Around mid-May 2020, final preparation will be made to follow-up with households that did not participate in the census. This operation is called “nonresponse follow-up.”

### May 2020

The nonresponse follow-up operation will be the focus starting in May 2020.

The objective is to get nonresponse households to cooperate on the first visit.

### July 2020

As the census operation winds down, special thank-you sessions for the work of the census will be held throughout the nation.

## Timeline and activities

These are just a few examples of activities or action steps for the committees. They are not all inclusive, just examples to get the committees started and thinking about what activities will work best in the community served.

## Education Phase

### Action Steps for Now Through December 2019

- Conduct SCCC/CCC training for members.
- Develop a work plan for promoting the census and motivating participation in your community.
- Hold daily/weekly meetings to report on tasks and other activities, including subcommittee reports as appropriate.
- Proceed with census awareness-building activities generated by the committee or subcommittees.
- Evaluate the effectiveness of the SCCC/CCC activities and adjust accordingly.
- Saturate the community with at least one census awareness-building activity each month.

## Awareness Phase

### Action Steps for January 2020

- Hold monthly meetings and subcommittee meetings.
- Finalize plans for activities surrounding Census Day activities.
- Review task lists and subcommittee plans.
- Proceed with 2020 activities.
- Finalize plans for activities to encourage households to complete and return the census questions.
- Develop and finalize plans for motivating households who do not return their questionnaire to cooperate with census takers during nonresponse follow-up activities.

## Motivation Phase

### Action Steps for March 2020–April 2020

- Hold regular SCCC/CCC and subcommittee meetings.
- Review and modify as needed plans for questionnaire delivery and Census Day activities.
- Finalize plans for all activities scheduled for March and April.
- Review and implement activities leading up to Census Day—April 1, 2020.
- Send a news release highlighting the 2020 Census activity schedule.
- Encourage households to complete the questionnaire online, by mail, or by phone immediately.
- Implement Census Day activities.
- Hold daily activities to encourage households to complete and return their questionnaires.
- Review outreach activities to ensure the committee is using the right activities in the right place. Make changes as needed.
- Prepare to implement activities for households who do not return their questionnaire.
- The Census Bureau plans to provide response rate numbers starting in April. These response rates may be used to determine where more outreach activity is needed in your community.

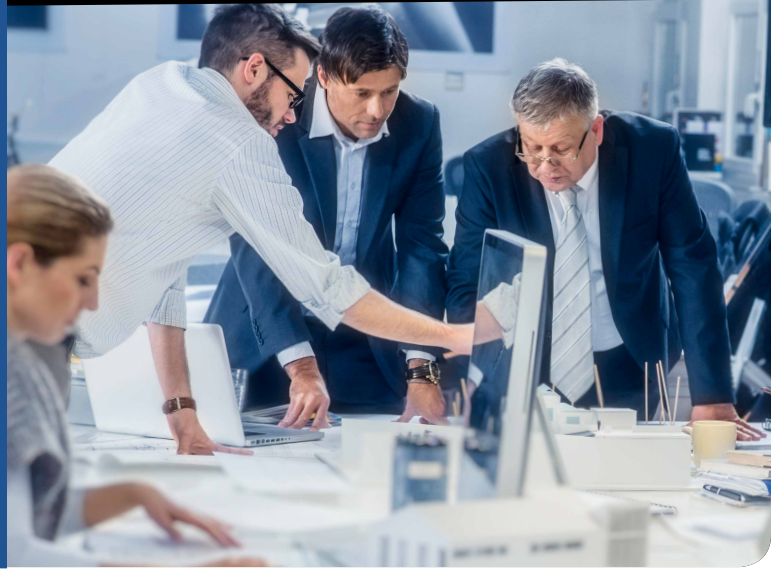
### *Action Steps for May 2020–July 2020*

- Use all resources to encourage households to cooperate with census takers.
- Continue to meet, give, and receive 2020 Census progress reports.
- Prepare a summary report of the SCCC/CCC activities and member feedback. Share this report with Census Bureau staff.
- Celebrate the success of the 2020 Census and recognize the efforts of the SCCC/CCC members.

Thank your community for their support and response.

# Chapter 5

## Planning Your Work and Working Your Plan



# DEVELOPING YOUR SCCC/CCC WORK PLAN

## Components of Work Plan

This chapter provides a model for developing a SCCC/CCC work plan, outlining goals, strategies, and time frames for achieving a complete and accurate census count in the community. The plan should address local challenges such as population speaking languages other than English, highly transient population areas, and low educational attainment. Components of an effective work plan include:

- **Overview**—Define the goals and objectives of the SCCC/CCC and provide a description of the community to include hard-to-count populations or areas considered most critical to reach and motivate, and areas with residents displaced by floods, hurricanes, or tornados who currently live in temporary housing. Identify the general strategies for implementing the work plan.
- **Committee Structure**—Identify the name of the SCCC/CCC, such as Vermont State Complete Count Commission, Burke County Complete Count Committee, or Carsville Census Community Action Committee. Describe the structure of the committee, including the names of any subcommittees and their focus or outreach objectives. SCCCs/CCCs may develop strategies for reaching their target area/population. The strategies presented may include:
  - Promotional materials to be developed by the committee.
  - Strategic assets, such as members, volunteers, and space, along with additional resources form the census media markets/outlets that are important to reaching the target area/population.

**Reporting**—Include a report of subcommittee activities to the SCCC/CCC after an activity has taken place to gain insight on best practices. Modify future

activities as needed based on feedback from the activity reports.

**Thank You**—Include strategies for thanking commission/committee members, the community and others who provided support throughout the campaign.

**Final Report**—Prepare a final evaluation of SCCC/CCC activities and successes to help the Census Bureau guide future commissions/committees and to plan appropriately for the 2030 Census.

## Effective SCCC/CCC Activities

Here are some examples that SCCC/CCC leaders identified as effective during previous campaigns:

**Public service announcements (PSAs)**—SCCCs/CCCs ranked PSAs among the top five most effective activities.

**Advertising campaign**—Previous committees noted that advertising was effective at the national level, but that it was important to conduct a local campaign targeting hard-to-count populations. Radio is an effective medium in many communities.

**Banners, posters, billboards, and advertising on benches**—SCCCs/CCCs said these types of promotions worked best in tribal, rural, and non-English-speaking communities.

**Print Materials**—Print materials were deemed especially effective for committees working on ethnic communities or rural areas.

**Faith-based activities**—Activities coordinated by faith-based organizations were tremendously successful in building awareness of the census in previous censuses.

**Translation of materials**—Commissions/committees in large urban areas noted the great value of providing materials in multiple languages.

**Local Media Coverage**—All previous committees felt local media coverage was essential to getting the word out about the census, but noted the need to enlist support from others. Some committees could get media exposure by enlisting politicians and sports figures as spokespeople and promoting school contests and projects centered on the census.

## Identifying Hard-to-Count Areas and Population

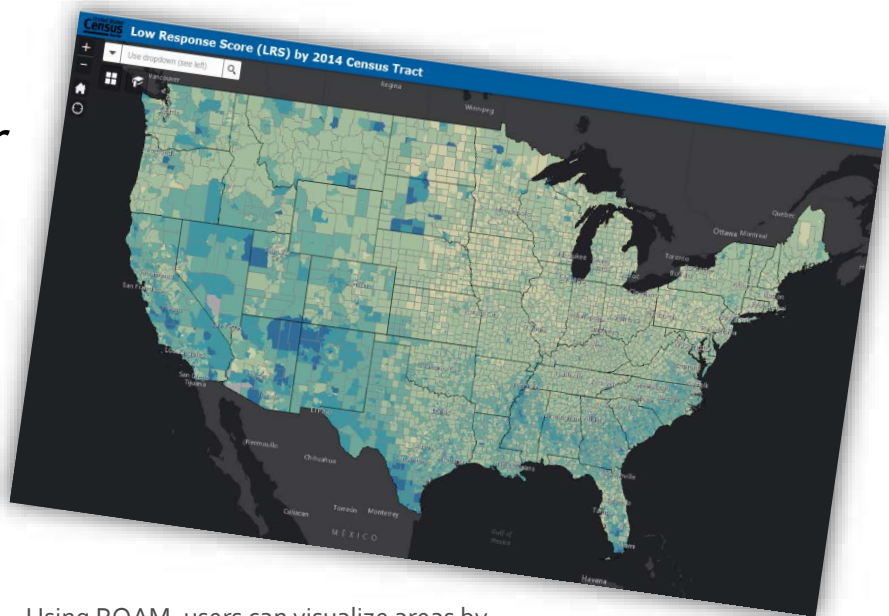
The SCCC/CCC should utilize the local knowledge of SCCC/CCC members and data on the makeup of the community. One resource that will provide data about hard-to-count populations is the Census Bureau's Response Outreach Area Mapper (ROAM) <[www.census.gov/roam](http://www.census.gov/roam)>.

Based on this information from the ROAM, the committee may want to develop activities that target communities with high LRS such as those percentages of renters or households that are not husband/wife families. For example, the CCC may want to include rental management or association representatives or representatives from social welfare/social service departments as members on the committee. These representatives work with these populations on a regular basis and may have insight on the best way to reach them and motivate their participation. Using the ROAM and identifying areas with low response scores in the community can help the committee focus outreach strategies in the work plan in areas where they are needed most. This targets the committee's outreach and promotion more precisely, and helps improve the accuracy of the 2020 Census.

# Response Area Outreach Mapper (ROAM)

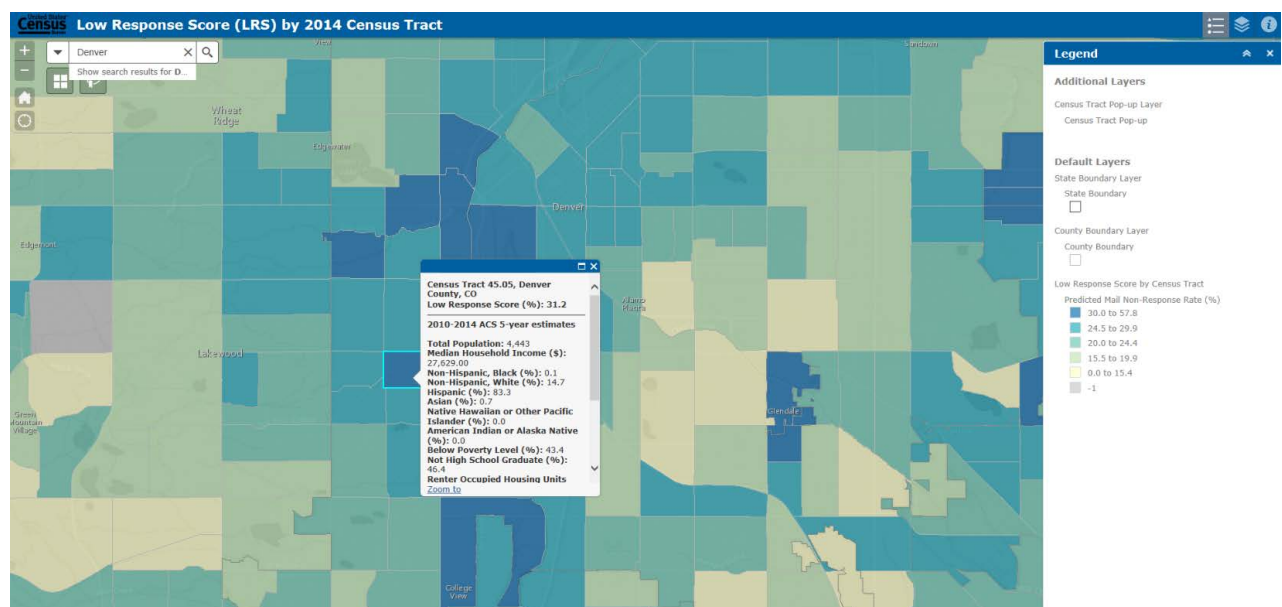
**Response Area Outreach Mapper (ROAM)** is an interactive Web mapping application that allows users to access the Census Bureau's Planning Database (PDB) to determine areas, down to tract level, that are harder to count.

The PDB includes the Low Response Score, 2010 Census data, and select American Community Survey (ACS) estimates. This data helps create a picture of hard-to-survey areas—those identified by *high* Low Response scores.



Using ROAM, users can visualize areas by predicted mail nonresponse rates, determine contributing socioeconomic or demographic factors, and plan outreach, marketing, and promotional efforts. This data also helps the Census Bureau hire staff who reflect the diversity and speak the languages of the community. These and other efforts can improve response rates.

United States™  
**Census  
2020**



# Chapter 6

## 2020 Census Integrated Communications Campaign



## ON THE ROAD TO 2020

### Overview

Building on the lessons learned from the 2010 Census, the 2020 Census will conduct a fully integrated Communications Campaign featuring advertising events, public relations, and partnership activities. The public relations objective for the Integrated Campaign is to surround every household in the country with credible, memorable messages through trusted conversations that motivate people to respond to the census.

### Additional Resources

The Census Bureau plans to provide materials that will be customizable, allowing partners the flexibility to include additional information and graphics. Many others will be turnkey and can be dropped into a newsletter or posted on a partner's Web site.

All materials will include consistent messaging to maximize the effectiveness of communications across the regions.

The Census Bureau is hiring for 2020. Information on available positions and how to apply can be found at Census Jobs Web site at <[2020census.gov/jobs](https://2020census.gov/jobs)> (to be activated later).

### General Operational Timeline

The 2020 Census Integrated Communications Campaign, that includes the integration of paid advertising, public relations, special events, marketing, Statistics in Schools, and promotional efforts, will rely heavily on partner participation and outreach at both the national and local levels. The Census Bureau plans to launch the campaign with an Awareness phase beginning in January 2020. In March 2020, the focus will shift from Awareness to Motivation, encouraging people to respond immediately. The Reminder phase will begin in May 2020, and will not only encourage immediate response, but will also encourage those that have not responded to cooperate with the census enumerators when they are visited. Finally, there will be a Thank You phase where the Census Bureau thanks everyone for their assistance and participation. Key dates of the 2020 Census operational timeline include:

# Chapter 7

## What to Expect From Your U.S. Census Bureau Staff Liaison



# THE ROLE OF PARTNERSHIP SPECIALISTS

### Program Implementation

Partnership specialists are the primary contact between the U.S. Census Bureau and the SCCC/CCC. They serve as technical advisors and information resources to SCCC/CCCs. However, they will not manage the SCCC/CCC in any way.

Partnership Specialists help the committees identify census awareness building activities that are most effective in their community. They will (depending on funding) also provide promotional materials to tribal and local governments and community organizations throughout the SCCC/CCC formation and implementation process.

Here are some steps partnership specialists will follow to assist local governments:

- Meet with all local governments in the area to encourage the formation of SCCC/CCCs to promote the importance of the 2020 Census and increase participation.
- Provide orientation/training for SCCC/CCC leaders or chairpersons, including information needed to form the committee, the characteristics of effective chairpersons, the various subcommittee structures, and possible actions.
- Provide technical support to SCCC/CCC chairpersons.
- Assist SCCC/CCCs in developing a strategy and work plan.
- Attend, when possible, SCCC/CCC meetings, provide guidance, recommend possible outreach and promotional activities, and distribute promotional materials and items, as available.
- Encourage the development of innovative activities geared to specific groups within the community.
- Maintain an open line of communication with SCCC/CCCs. This will lead to a more collaborative relationship and more effective SCCC/CCCs.

# Chapter 8

## Summary and Closing



### Summary

This SCCC/CCC training manual provides SCCC/CCC leaders and members the information needed to form strong and effective committees. By drawing on the local knowledge of the committee and census data, the SCCC/CCC will develop focused and efficient to support the 2020 Census.

- SCCC/CCCs speak the language of the community and know how to best reach residents.
- SCCC/CCCs help ensure an accurate 2020 Census count.
- SCCC/CCCs increase the participation ratio and the response rate in their communities.

### Closing

This session was intended to provide SCCC/CCC leaders/members with tools to train their team. We have provided some basic information about the U.S. Census Bureau and covered some essential elements of successful SCCC/CCCs. The most successful SCCC/CCCs will use this information in this guide to create mixes promotions, messaging, and local grassroots outreach tailored to their respective communities.

**Evaluations**—Please complete the evaluation form in your packet of materials and return it to your trainer. Thank you for your time, attention, and commitment to this important effort.



*Message  
From Cathy Lacy, Regional Director  
U.S. Census Bureau-Denver Region*

Every decade since 1790, the U.S. Census Bureau has conducted a constitutionally mandated census to determine the number of people living within the United States and our territories. These data are used by our nation's leaders to help make vital decisions on behalf of all residents, including reapportionment and redistricting. Census data also affect how federal funds are distributed to tribal, state, and local governments each year.

One of the primary goals of the 2020 Census is to maximize the self response to the Census. This not only reduces the overall cost of the census, but it also increases the accuracy of these data as well. Tribal, state, and local governments, as well as community and business organizations can help us achieve this goal by bringing local knowledge and expertise to the process.

The Complete Count Committee is a major vehicle for planning and implementing local, targeted efforts that will uniquely address the special characteristics of your community. The role of the Complete Count Committee will be to plan and implement local outreach efforts to publicize the importance of the 2020 Census. The work of this committee will be innovative, exciting, and rewarding.

This informational packet provides guidelines for the active involvement of government officials, community leaders, and businesses in promoting the 2020 Census to residents of your community. The materials we have provided suggest a beginning format for organizing a campaign, provides examples of activities that may be implemented, and gives a timetable for these activities.

Your participation in the 2020 Census program is voluntary. However, many states understand that their participation is vital to help ensure an accurate and complete count of their community.

The Census Bureau is strongly committed to the most accurate and efficient census in 2020. With your help, we will ensure every resident is counted once—only once—and in the right place. We look forward to partnering with you to obtain an accurate count.

Sincerely,

  
Cathy L. Lacy



## **Agenda**

### **Complete Count Committee Formation Meeting**

#### **Welcome and Introduction**

##### ***Complete Count Committee Basics***

- Purpose and Goals
- Structure
- Roles, Local vs. Census
- Interaction with other CCC's in state and with Census Bureau

##### ***Sub Committees***

- What kind of subcommittees work for your area?
- Challenges and Opportunities

##### ***Data – Facts about your CCC Area***

- The 2020 Census at a Glance
- The George Washington University Counting For Dollars 2020
- ROAM – (Response Outreach Area Mapper)
- U.S. Census Bureau QuickFacts

##### ***Timeline of Activities***

- Census Operations
- CCC Activities

##### ***Determining Local Resource Needs***

- What already exists that can be used?
  - Events
  - Communication Strategies
  - Major Businesses/Corporations
- What additional resources might need to be secured?

##### ***Next Steps***

- Local Action Items
- Census Action Items
  - Chair Appointed Deadline
  - CCC Committee Training – Tentative Month



---

### *How Does a Complete Count Committee Work?*

The Census Bureau cannot do this alone. We require the assistance of partners—individuals, groups, and organizations across the nation that can help us build awareness about the census, educate about its importance, and encourage their community to participate. One very effective way to accomplish this is through **Complete Count Committees**.

### *What Is a Complete Count Committee?*

A **Complete Count Committee (CCC)** is a volunteer committee established by tribal, state, and local governments, and/or community leaders, to increase awareness about the census and motivate residents in the community to respond. The committees work best when they include a cross section of representatives from government agencies, education, business, faith-based and community-based organizations, and the media. Establishing a Complete Count Committee is not an exact science or technical endeavor.

### *The Purpose and Goals of a Complete Count Committee*

---

The CCC is charged with developing and implementing a 2020 Census outreach, promotion, recruitment, and enumeration assistance plan of action designed to target and address the needs of their communities.

The overall purpose of the Complete Count Committee is three-fold:

1. It provides high-level oversight for participation in the 2020 Census
2. It provides a group of “trusted voices” to act as Census ambassadors
3. It serves as a knowledgeable contact point for the regional director in meeting the goal of a timely, accurate and cost-effective complete count.

The goals of the Complete Count Committee are to act as “champion” for the 2020 Census by:

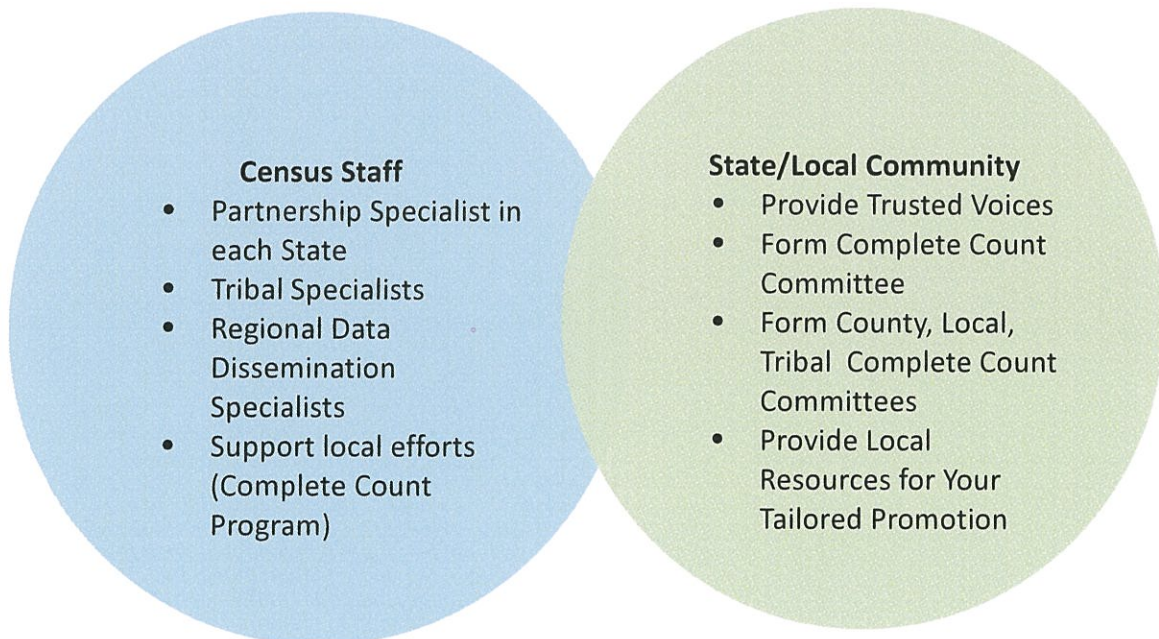
1. **Motivating** the community to self-respond;
2. **Educating** the public about the importance of the Census to the local community;
3. **Informing** the community about the Census activities and timelines;
4. **Involving** the community in activities to build awareness;
5. **Increasing** the response rate.

## Structure of a Complete Count Committee

The mayor/county official appoints the members of the Complete Count Committee. The key elements of a successful CCC are:

- **Outreach** – People who can communicate to hard-to-count groups
- **Resourceful** – People who can bring resources to the table
- **Decision-makers** – People who can approve initiatives
- **Credibility** – People of influence and respect
- **Commitment** – People willing to doing the work
- Bipartisan
- Representative of all major races and ethnicities within the community/emerging population
- Creation of a coalition of businesses, community groups, government officials and large university representatives

Once the committee is formed, the Census Partnership staff member serves as liaison and advisor to the Complete Count Committee. The Partnership staff member will attend the meetings in an advisory capacity.



## Suggested Subcommittees

**Government subcommittee** – Assists in all activities between the Census Bureau and the local government, such as participation in decennial geography programs, providing free space for Mobile Response Tables, recruitment and training, and identifying other resources for CCC activities.

**Education subcommittee**—Facilitates census awareness for local schools from prekindergarten through twelfth grade, as well as postsecondary education institutions in the area. Encourages school administrators, teachers, and students to use Statistics In Schools materials where appropriate.

**Faith-based subcommittee**—Creates and coordinates activities and materials that can be used by any local faith-based institution in the promotion of the 2020 Census for awareness and participation purposes.

**Media subcommittee**—Creates and facilitates ways to get the census message to all community residents, using all available sources such as social media, local newspapers, newsletters, fliers, local festivals, billboards, radio, and television.

**Community-based organizations subcommittee**—Collaborates with community organizations to inform residents of the importance of participating in the 2020 Census and the benefits derived from census data.

**Business subcommittee**—Creates and coordinates activities that involve businesses in census awareness, such as distribution of census information and census messages on packaging (grocery bags), and the inclusion of the census logo and message on sales promotion materials.

**Recruiting subcommittee**—Disseminates information about census job openings for the 2020 Census. Information will include the number of jobs available, types of jobs available, and the locations of testing and training sites.

The subcommittee chairpersons may recruit members for their respective teams. The ideal candidates for a **Complete Count Committee** are community members who have expertise, influence, and experience in the area of the respective committee. Committees are more productive and successful when they invest time, resources, and energy to this effort.

## Suggested Complete Count Committee Activities

**Develop an action plan** that will include activities, events, etc., which will support your efforts and help you meet your goals and objectives.

**Create ways to dispel myths** and alleviate fears about the privacy and confidentiality of census data.

**Encourage corporations and foundations** to become official sponsors of your census activities.

**Implement special events** that will generate interest and participation in the census.

**Plan a Census Day** event to motivate community response.

