

I T E M 2 2 . 2

# Special Privilege





# License Details

## Applicant:

- Summit Indigo EP, LLC

## Location:

- Along the corner of Main Street and Kansas Street
- Adjacent to 325 N. Kansas St.

## Type of Encroachment

- Installation of 2(two) new planter beds over portions of right-of-way which will consist of a variety of shapes and sizes of terracotta pots, custom concrete vessels permanently mounted on cast concrete bases, pedestals and planting troughs

## Term

- Fifteen years with the option of one fifteen-year renewal;
- Renewals are administrative (do not require Council approval)

## Fees

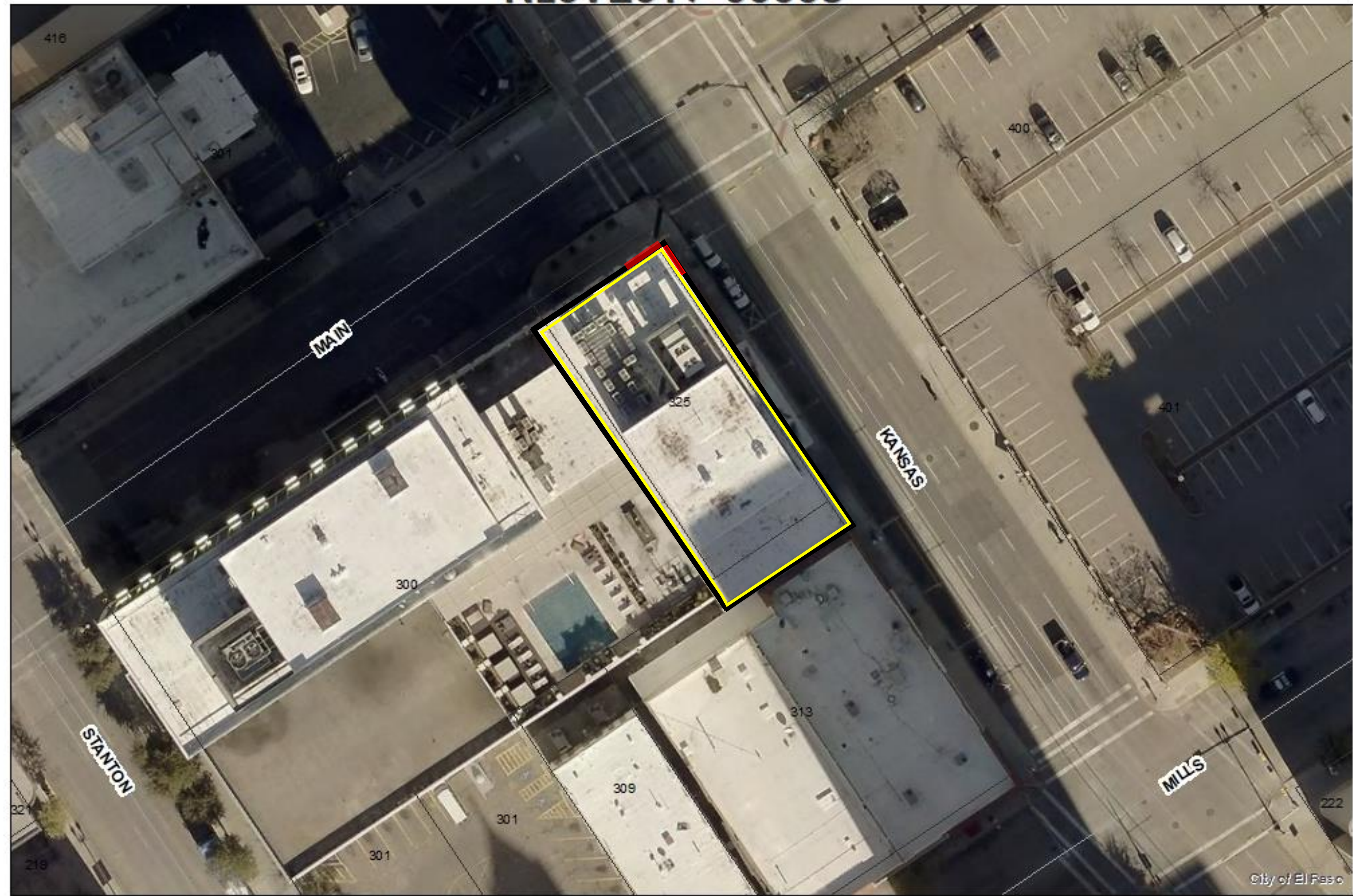
- \$1,330.00 per year

## Staff Recommendation

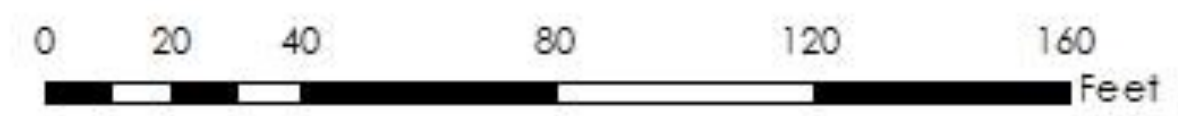
- Approval



NESV2019-00008



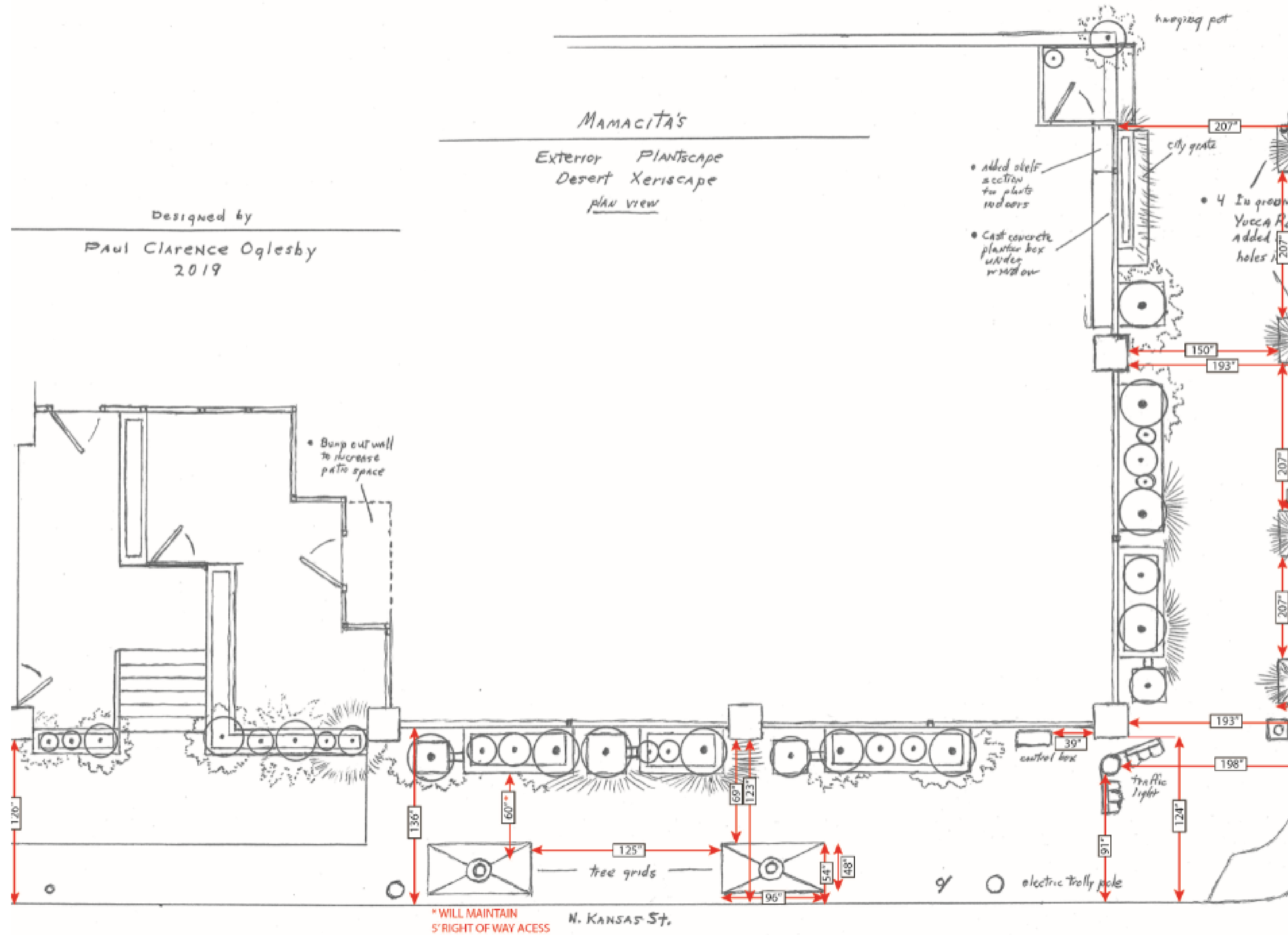
This map is designed for illustrative purposes only. The features depicted here are approximate and more site-specific studies may be required to draw accurate conclusions. Enlargements of this map to scales greater than its original can induce errors and may lead to misinterpretations of the data. The Planning & Inspections Department Planning Division makes no claim to its accuracy or completeness.





Designed by  
Paul Clarence Oglesby  
2019

MAMACITA'S  
Exterior Plantscape  
Desert Xeriscape  
plan view



MAMACITA'S

Exterior Plantscape  
Desert Xeriscape

streetview

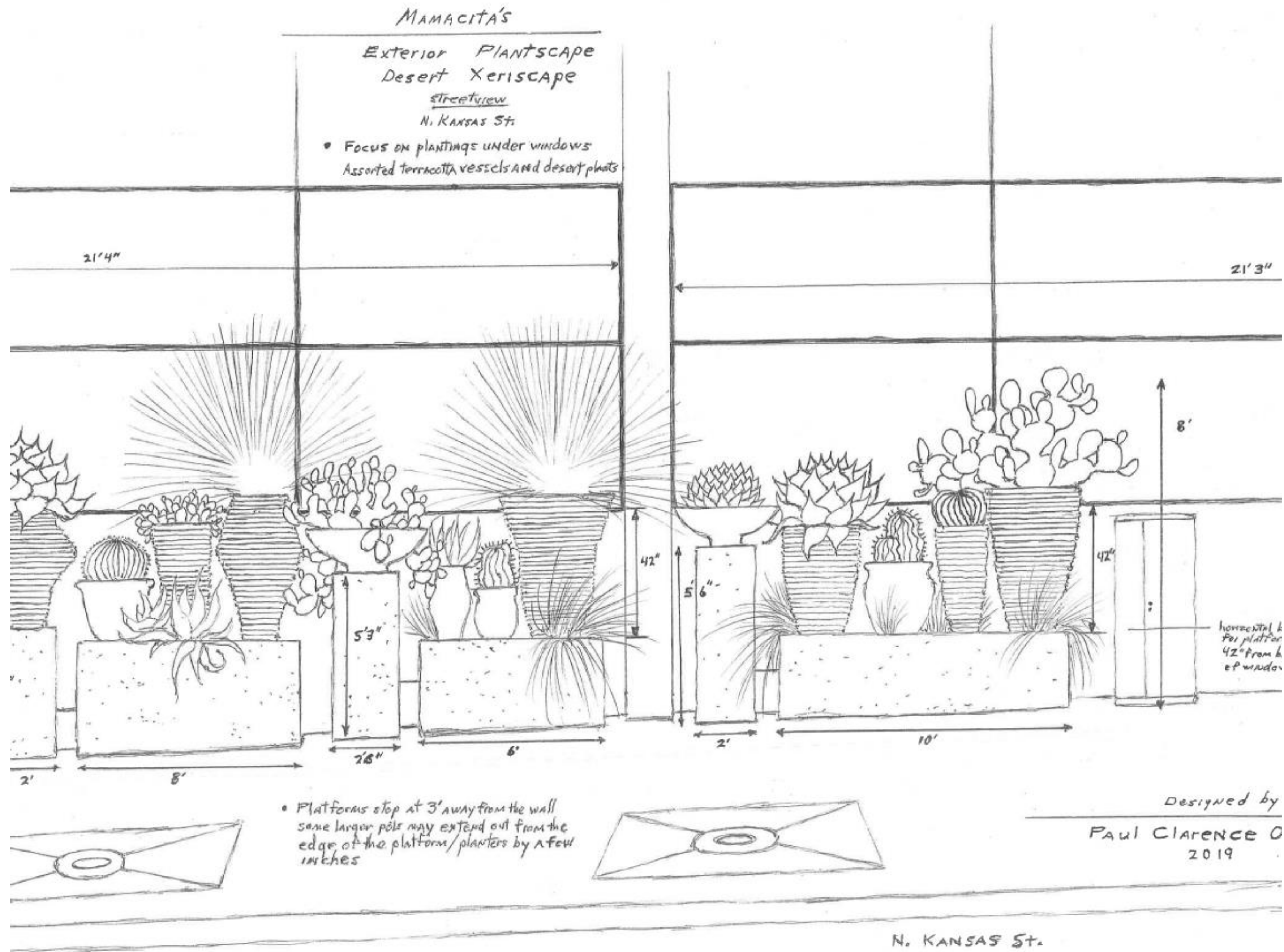
E. MAIN St.

- Focus on plantings under windows  
Assorted terracotta vessels and  
desert plants with most being native

- A proposed switch from Indian  
Hawthornes in sidewalk cut-outs  
along curb to Yucca Rostrata and Feather grass









# Recommendation | Public Input

7

**DCC/Planning Division recommendation:**  
**Approval**

**Public Input:**  
**N/A**

## **Strategic Goal #3 Promote the Visual Image of El Paso**

- 3.1 Provide business friendly permitting and inspection processes
- 3.2 Improve the visual impression of the community





**THANK YOU**

