



## Recommendation/Public Input

- **Planning Division recommendation:** Approval
- **CPC Vote:** Approval Recommendation (8-0)
- **Public Input:** The Planning Division has not received any communication in support or opposition to the rezoning request.

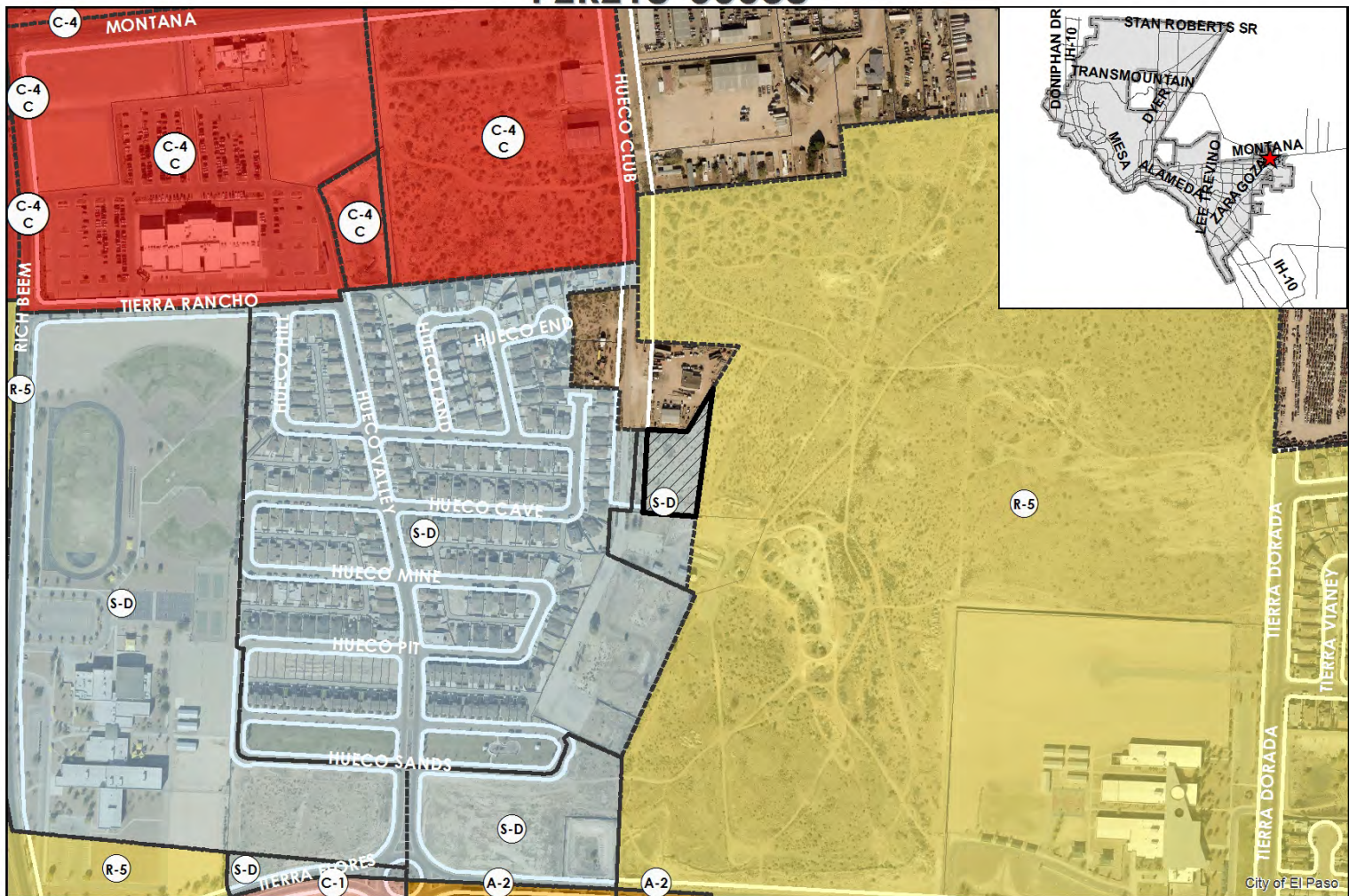
Strategic Goal #3 Promote the Visual Image of El Paso

3.1 Provide business friendly permitting and inspection processes

3.2 Improve the visual impression of the community



PZRZ18-00038



This map is designed for illustrative purposes only. The features depicted here are approximate and more site-specific studies may be required to draw accurate conclusions. Enlargements of this map to scales greater than its original can induce errors and may lead to misinterpretations of the data. The Planning & Inspections Department Planning Division makes no claim to its accuracy or completeness.



 Subject Property

0 175 350 700 1,050 1,400 Feet

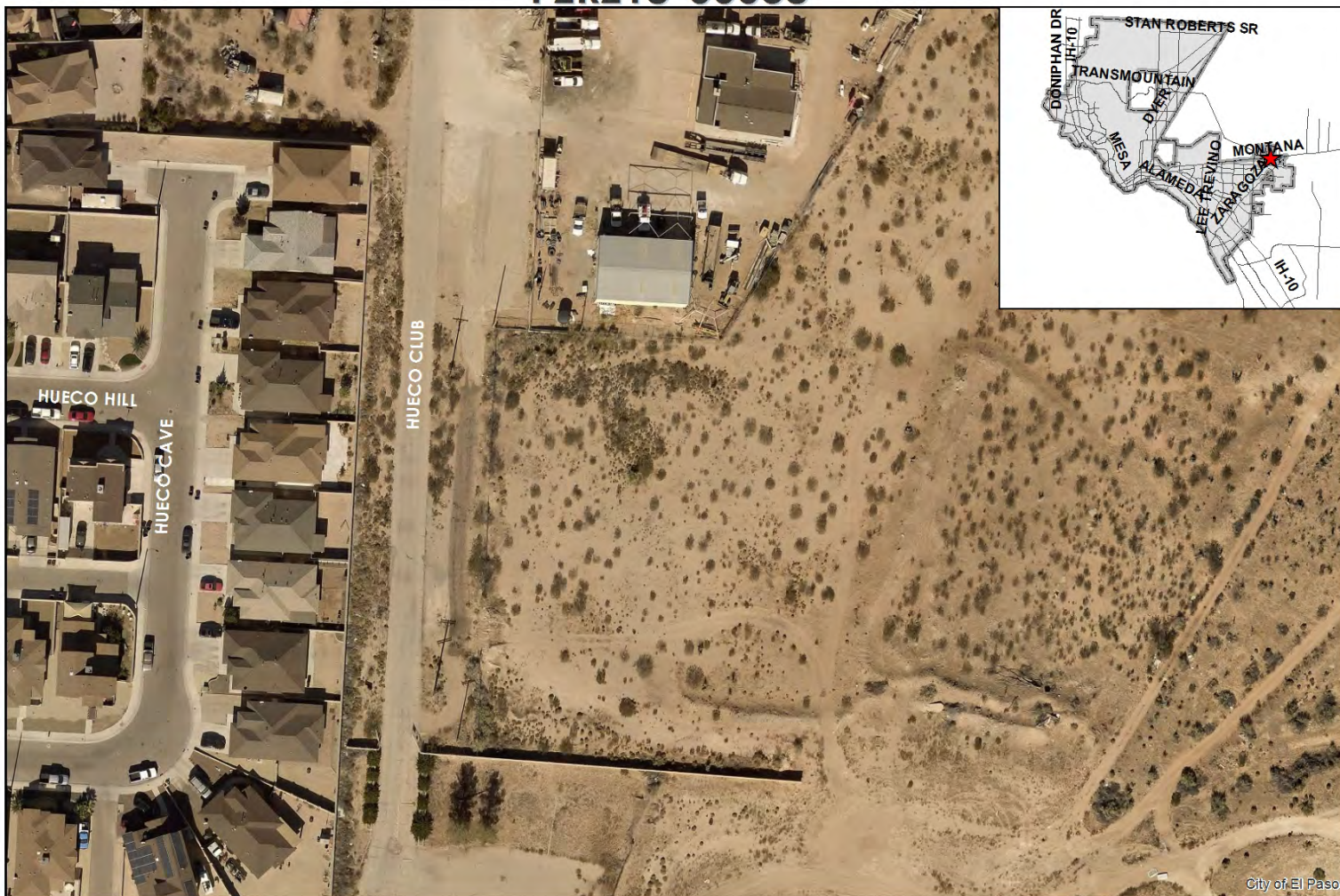


*"Delivering Outstanding Services"*





PZRZ18-00038



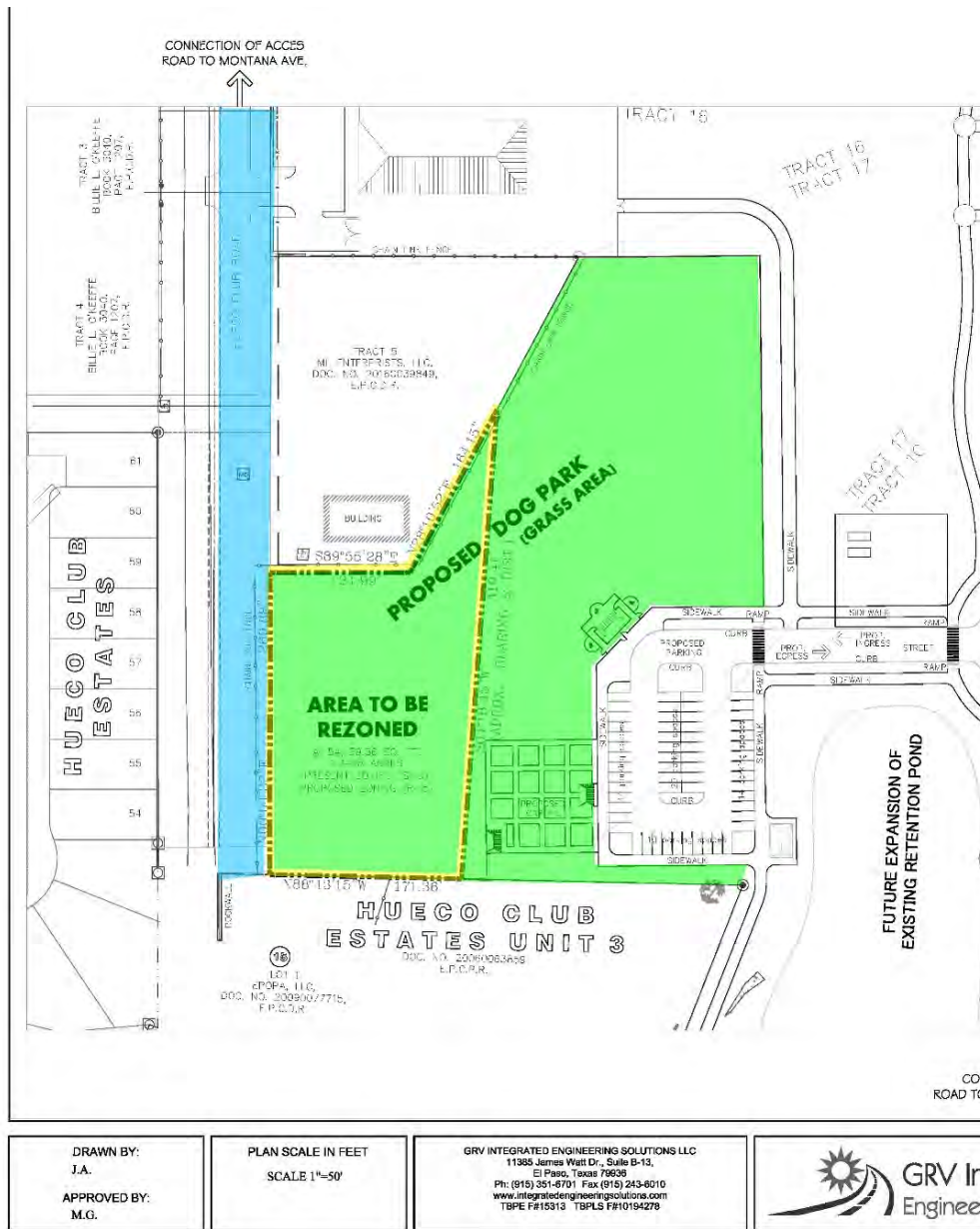
This map is designed for illustrative purposes only. The features depicted here are approximate and more site-specific studies may be required to draw accurate conclusions. Enlargements of this map to scales greater than its original can induce errors and may lead to misinterpretations of the data. The Planning & Inspections Department Planning Division makes no claim to its accuracy or completeness.



0 30 60 120 180 240 Feet



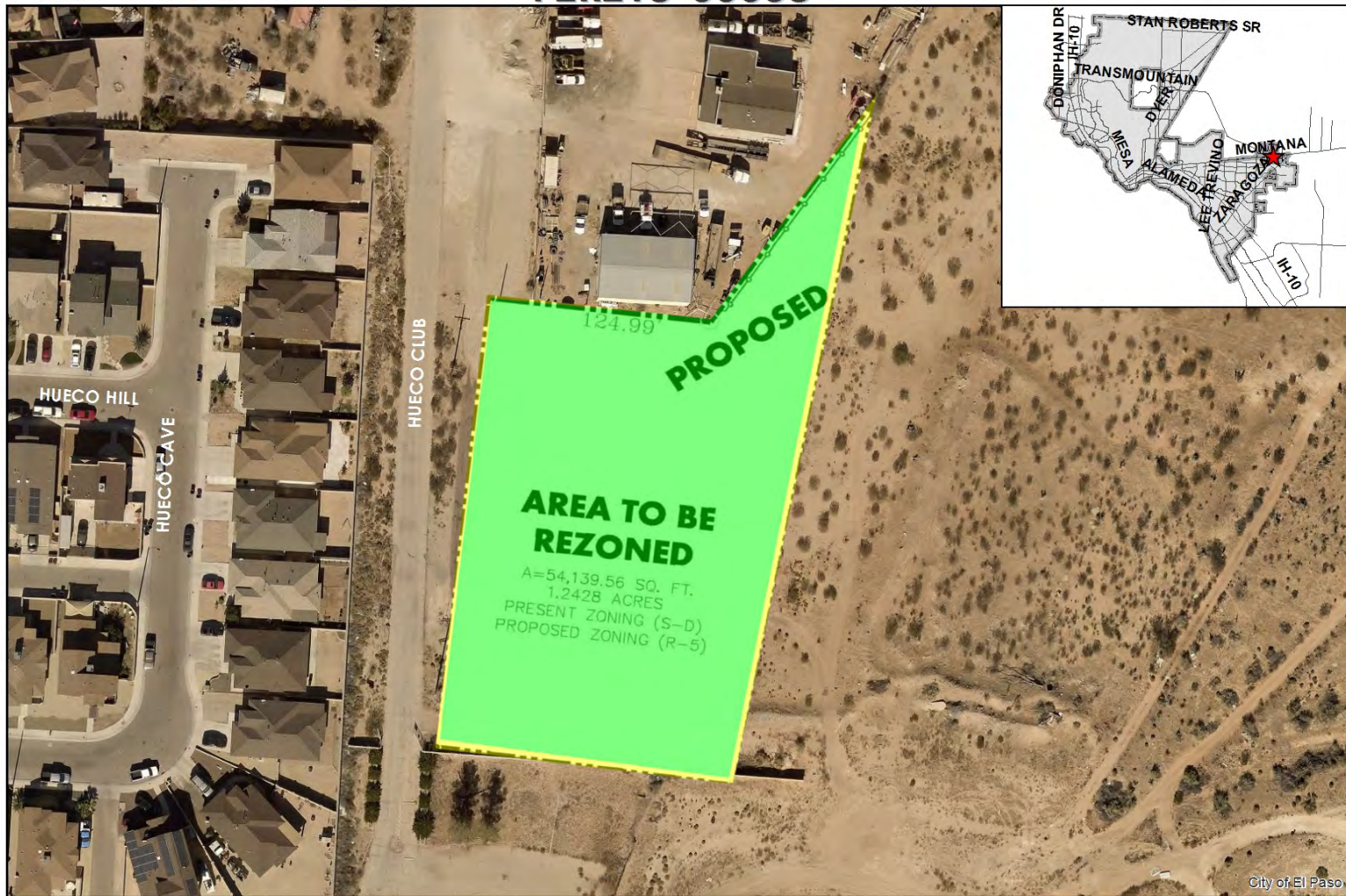
*"Delivering Outstanding Services"*







PZRZ18-00038



This map is designed for illustrative purposes only. The features depicted here are approximate and more site-specific studies may be required to draw accurate conclusions. Enlargements of this map to scales greater than its original can induce errors and may lead to misinterpretations of the data. The Planning & Inspections Department Planning Division makes no claim to its accuracy or completeness.



0 30 60 120 180 240 Feet



*"Delivering Outstanding Services"*





*“Delivering Outstanding Services”*

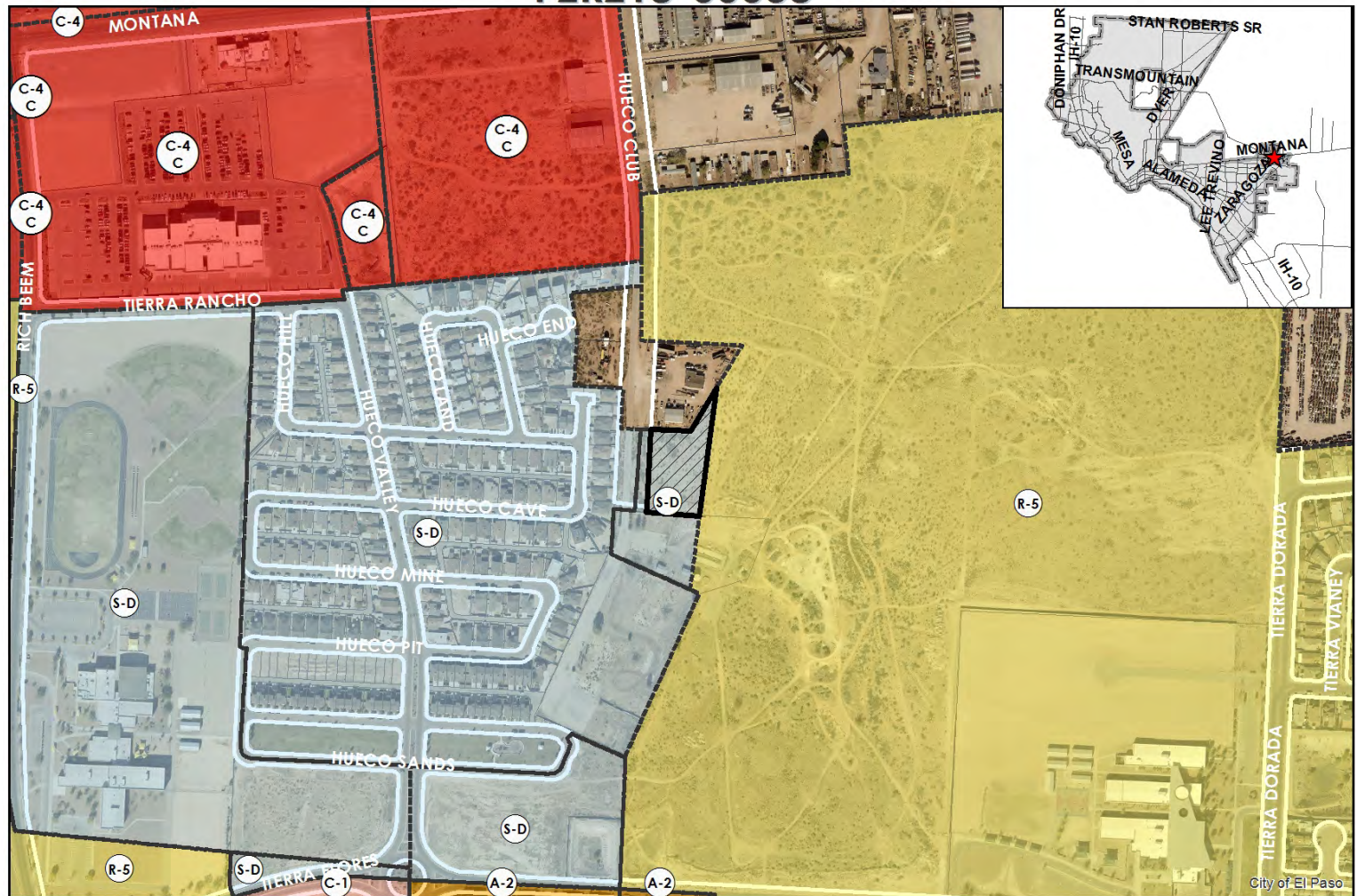


Services"





PZRZ18-00038



This map is designed for illustrative purposes only. The features depicted here are approximate and more site-specific studies may be required to draw accurate conclusions. Enlargements of this map to scales greater than its original can induce errors and may lead to misinterpretations of the data. The Planning & Inspections Department Planning Division makes no claim to its accuracy or completeness.



Subject Property

0 175 350 700 1,050 1,400 Feet



*"Delivering Outstanding Services"*