

A nighttime photograph of a cityscape, likely El Paso, Texas, viewed from an elevated position. The city lights are visible in the foreground and middle ground, with a dark mountain range in the background. A bright starburst graphic is positioned behind the word 'ADJUSTMENT' in the title.

REGULATING PLAN ADJUSTMENT

Hunt Mesa 7 (fka UTEP-Soleado Trail)

Recommendation | Public Input

2

City Plan Commission recommendation:

Approval of the Regulating Plan adjustment

Planning recommendation:

Approval of the Regulating Plan adjustment

Public Input:

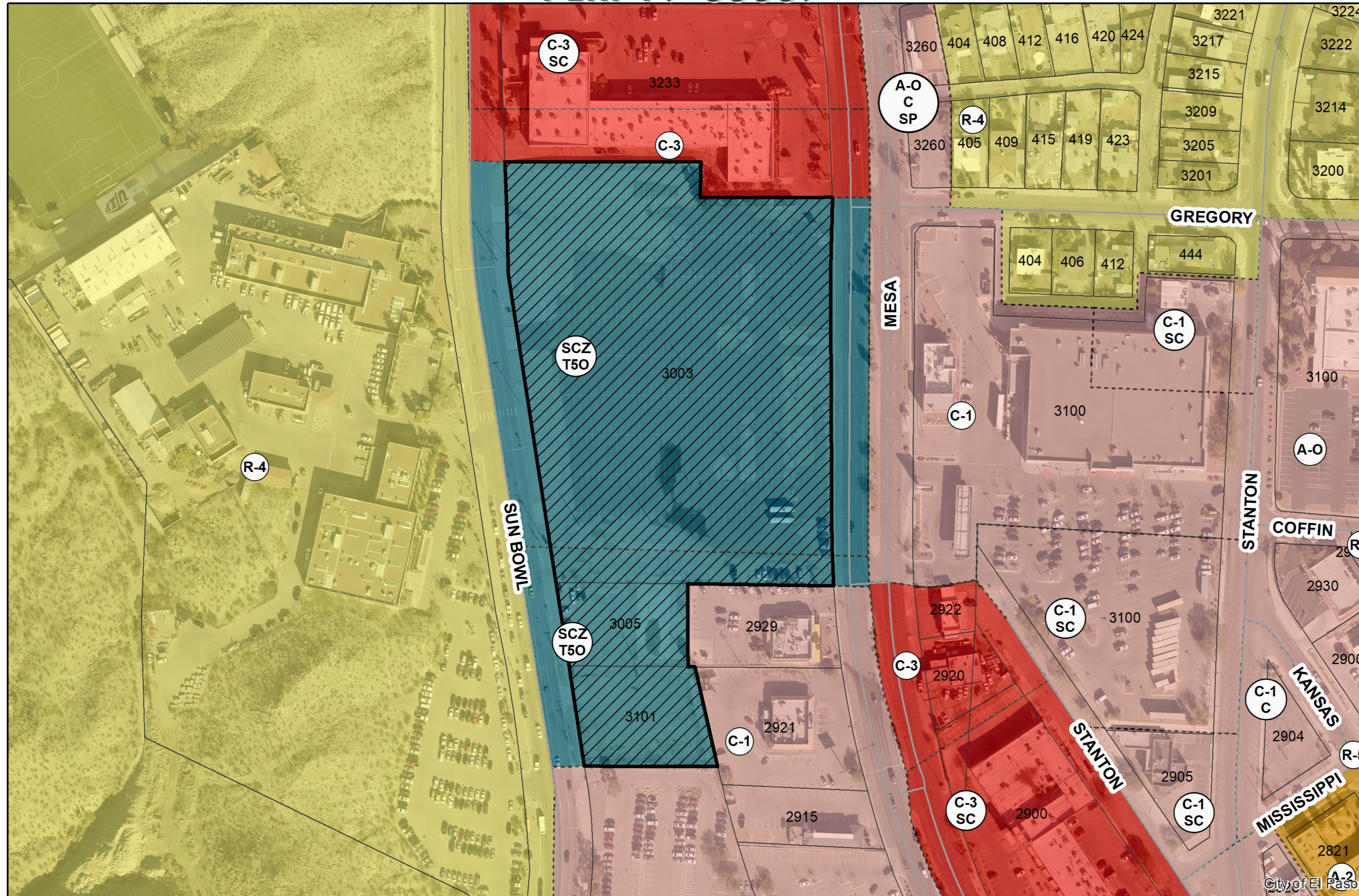
- N/A

Strategic Goal #3 Promote the Visual Image of El Paso

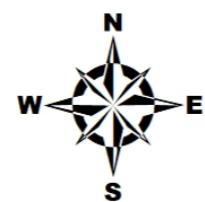
3.1 Provide business friendly permitting and inspection processes

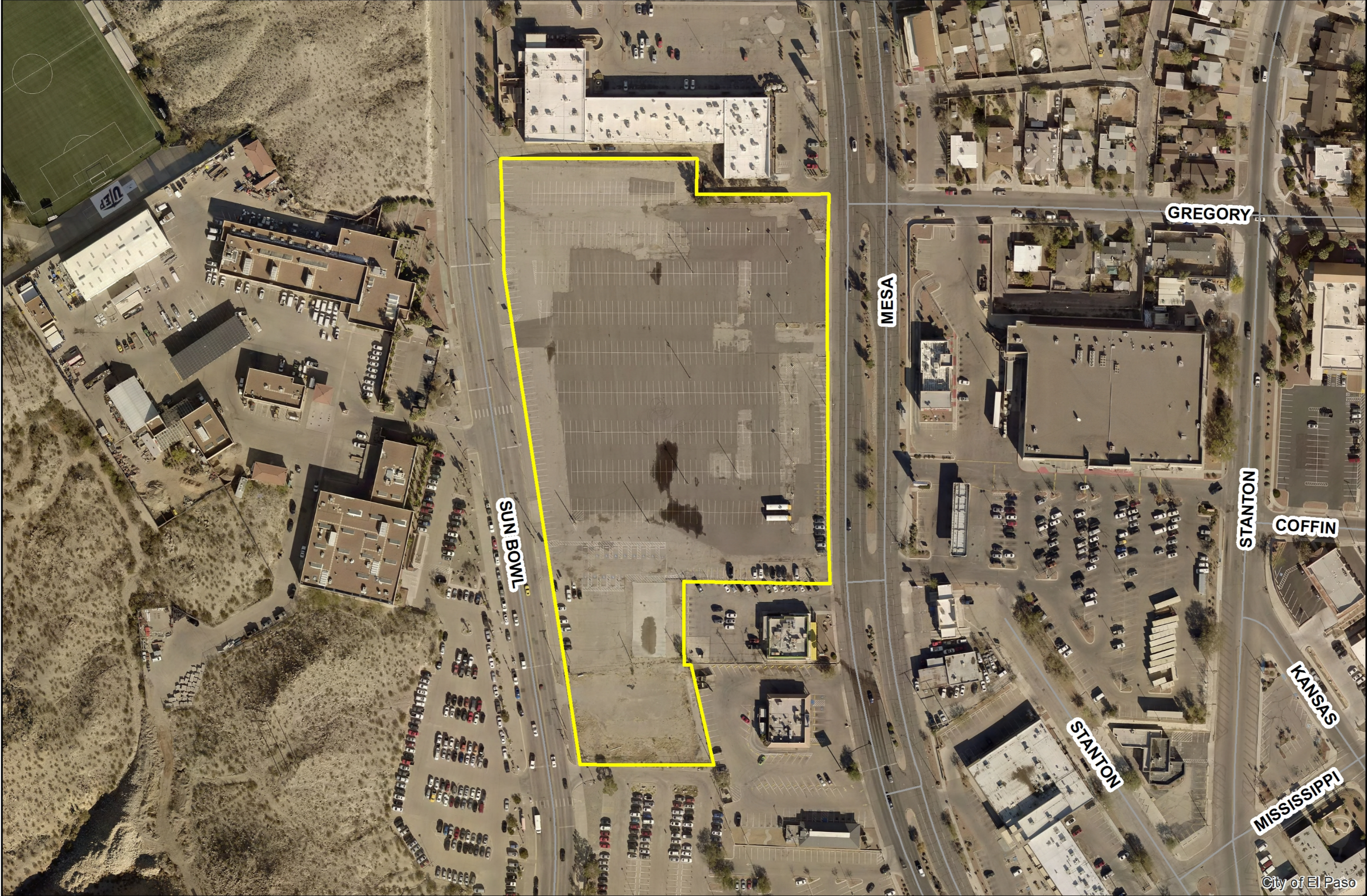
3.2 Improve the visual impression of the community



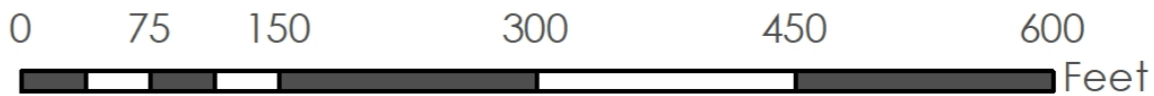


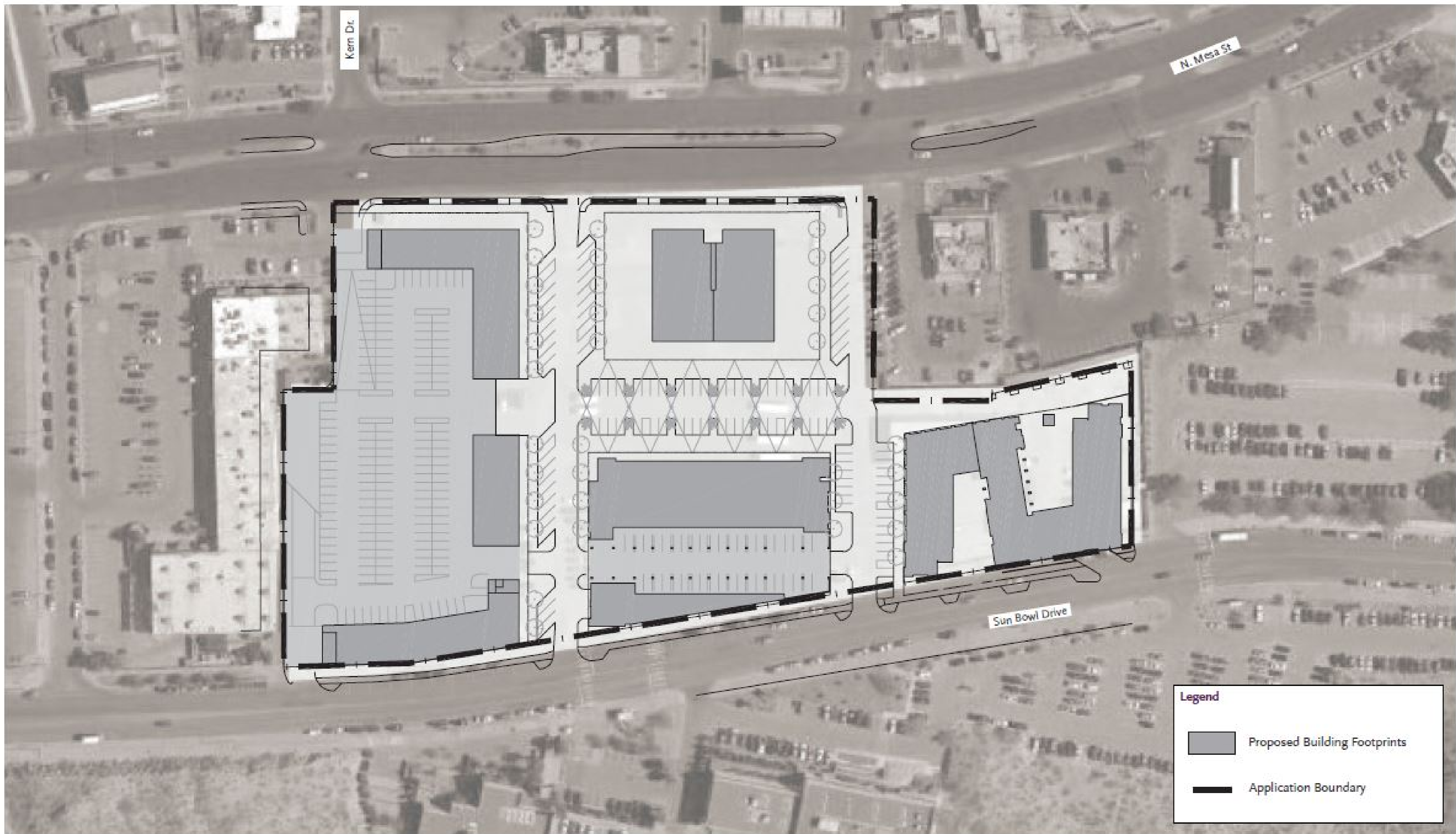
This map is designed for illustrative purposes only. The features depicted here are approximate and more site-specific studies may be required to draw accurate conclusions. Enlargements of this map to scales greater than its original can induce errors and may lead to misinterpretations of the data. The Planning & Inspections Department Planning Division makes no claim to its accuracy or completeness.





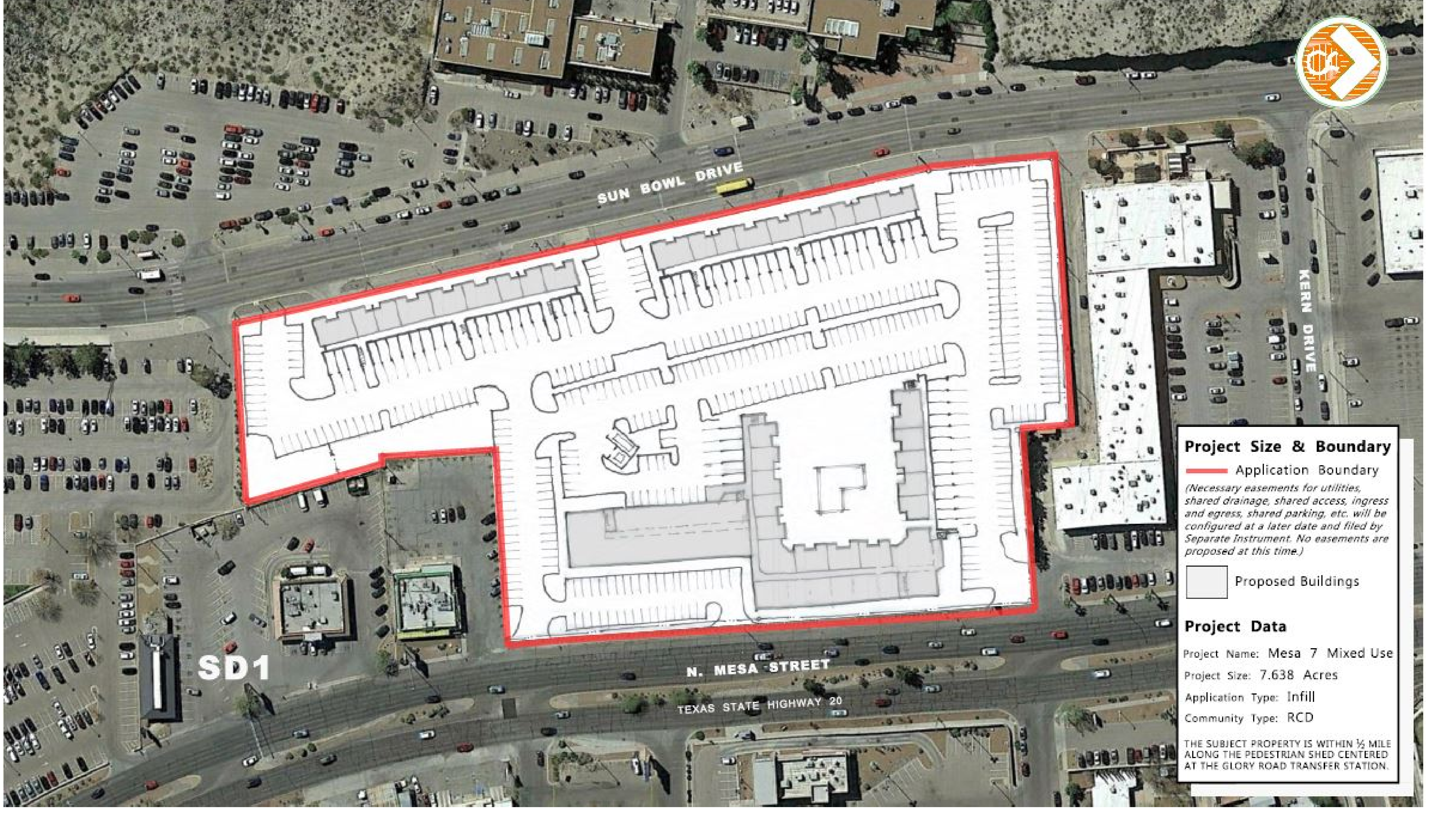
This map is designed for illustrative purposes only. The features depicted here are approximate and more site-specific studies may be required to draw accurate conclusions. Enlargements of this map to scales greater than its original can induce errors and may lead to misinterpretations of the data. The Planning & Inspections Department Planning Division makes no claim to its accuracy or completeness.





ILLUSTRATIVE SITE PLAN





SD1

SUN BOWL DRIVE

KERN DRIVE

N. MESA STREET

TEXAS STATE HIGHWAY 20

Project Size & Boundary

 Application Boundary
(Necessary easements for utilities, shared drainage, shared access, ingress and egress, shared parking, etc. will be configured at a later date and filed by Separate Instrument. No easements are proposed at this time.)

 Proposed Buildings

Project Data

Project Name: Mesa 7 Mixed Use
Project Size: 7.638 Acres
Application Type: Infill
Community Type: RCD

THE SUBJECT PROPERTY IS WITHIN 1/5 MILE ALONG THE PEDESTRIAN SHED CENTERED AT THE GLORY ROAD TRANSFER STATION.

THANK YOU

