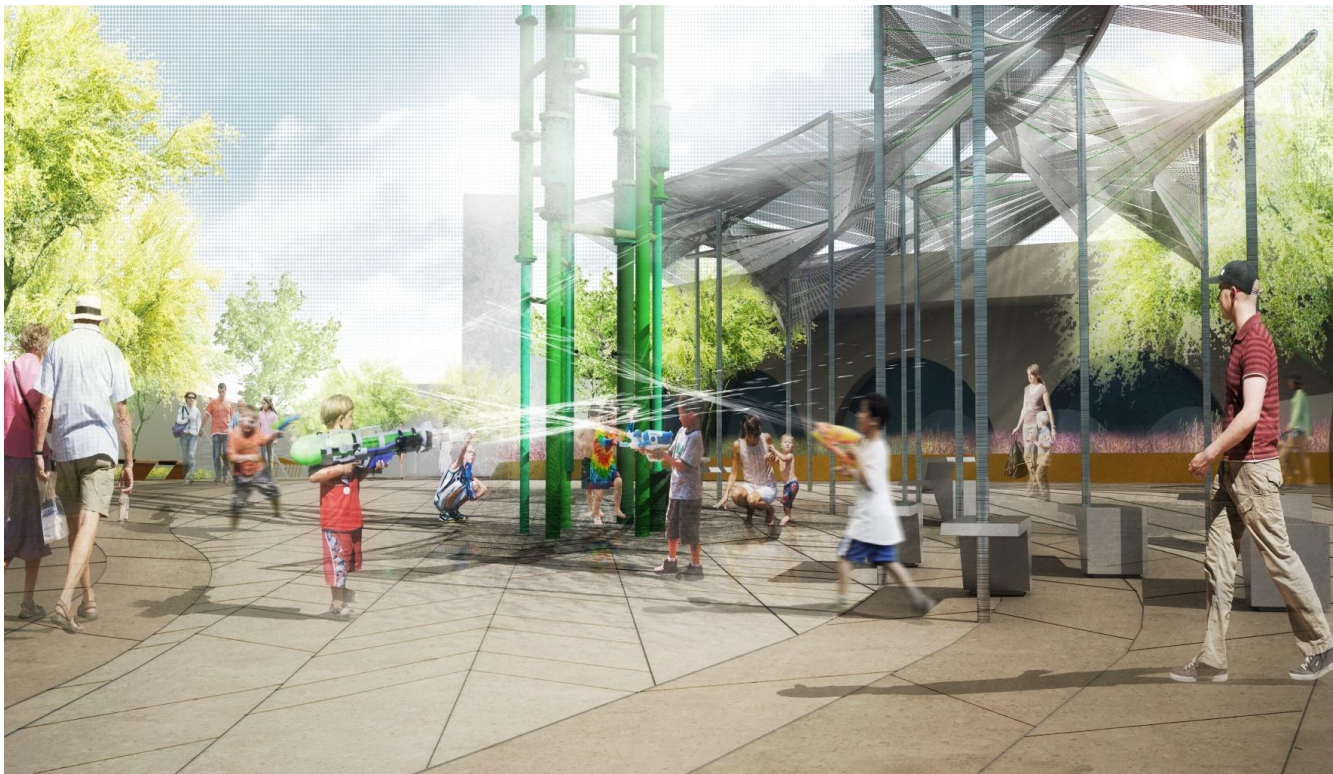


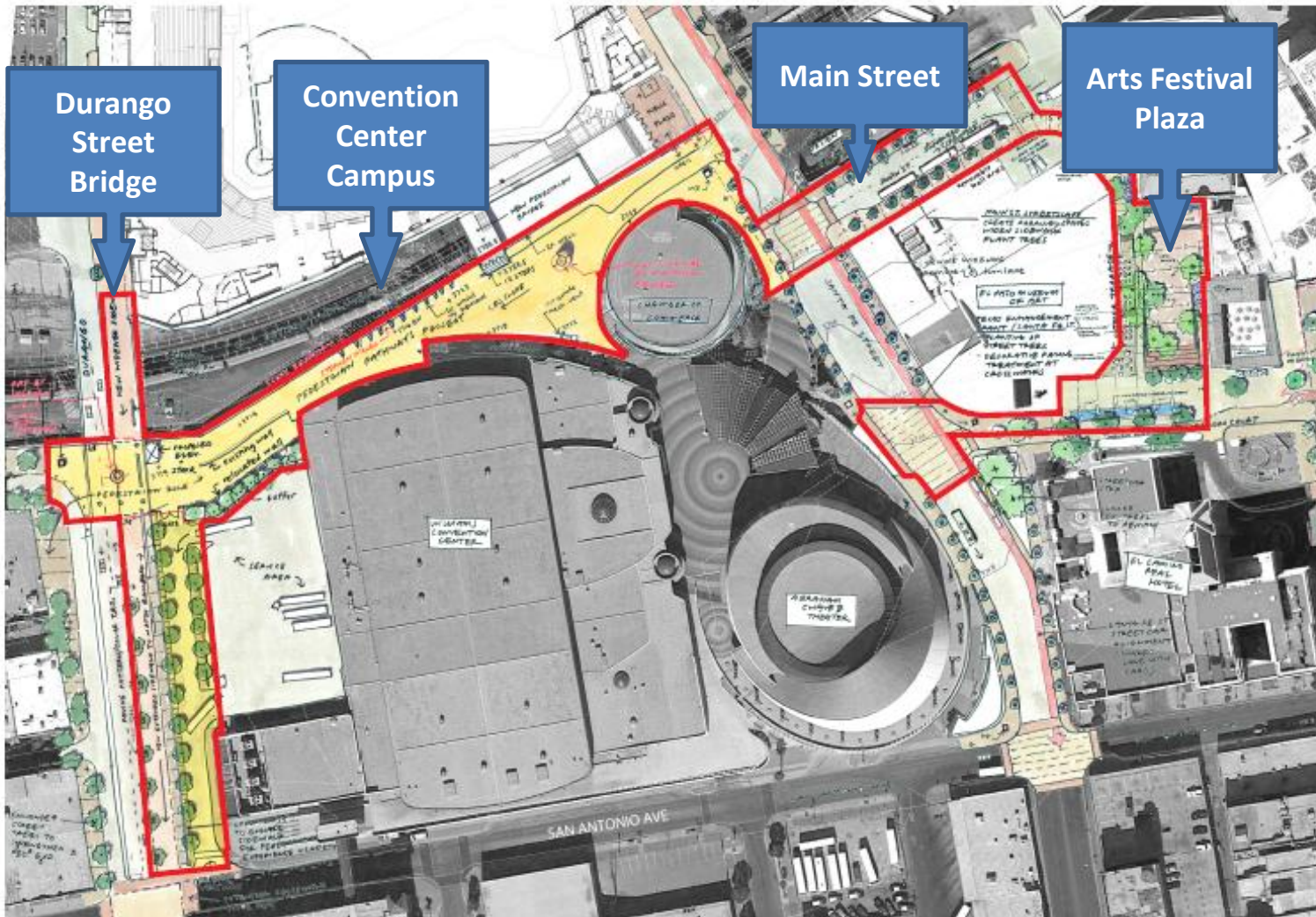


# Project Update

## Pedestrian Pathway



## Connecting Union Plaza and Downtown Arts District





# Pedestrian Pathway

Convention Center Campus – concrete forms



# Pedestrian Pathway

Convention Center Campus – Public Art & Planter Foundations





# Pedestrian Pathway



Convention Center Campus – West view





# Pedestrian Pathway

## Work In Progress at Convention Center Campus

Project Element	Task Description	Status
Underground	Foundations and conduits	COMPLETE 
Landscaping	Underground irrigation system	COMPLETE 
	Planter walls being fabrication	In progress – 70%
	Installation of trees and shrubs	Begin Jan. 2015
Concrete Pavement	Form installation & Concrete placement	In progress – 15%
	Scheduled Completion	Jan. 15, 2015

# Pedestrian Pathway

Arts Plaza – underground conduits





# Pedestrian Pathway

Arts Plaza – underground conduits







# Pedestrian Pathway

## Work In Progress at Arts Plaza

Project Element	Task Description	Status
Underground	Foundations and conduits	In progress – 50%
Planters	Fabrication underway	In Progress – 10%
Landscaping	Installation of trees and shrubs	Begin Feb. 2015
Concrete Pavement	Form installation & Concrete placement	Begin Jan. 2015
	Scheduled Completion	Feb. 27, 2015



# **Pedestrian Pathway**

## **Threats to Project Completion**

- **None to Report at this time**





# Pedestrian Pathway

Date	Change Order	Budget Impact
1/8/14	Install electrical conduit and pull boxes for future tree string lights on Main street (Phase 1.3)	\$8,779.00
2/28/14	Remove existing light poles at center of sidewalk on Main Street, Install foundations and conduit for new street illumination, Modify ramp at Santa Fe & Main in order to comply with ADA, Remove and dispose of thicken asphalt pavement. (Phase 1.3)	\$25,352.00
5/22/14	Repair existing leaking water line, install silt fence and rock construction exit, relocate water line and spout, remove existing traffic signal foundation, increase size of tree grates to 6'x6' (Phase 1.2A)	\$8,761.00
11/23/14	Install drill piers at mechanical room, install larger diameter pipes for high pressure water lines, install exhaust fan in mechanical room, and install larger backflow preventer (Phase 1.2A)	\$24,969.00
10/2/14	Remove and dispose of existing thick concrete sections (Phase 1.2B)	\$ 8,000.00
10/28/14	Remove and dispose of a portion of existing concrete planter walls, remove large branches from exiting trees to allow equipment to install drill piers at mechanical room.	\$ 3,639.00
Total Change Order Amount:		\$79,500.00

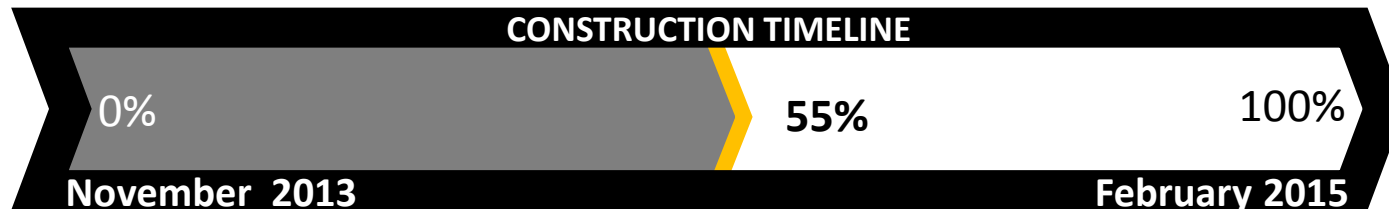


# Pedestrian Pathway

**Project Start Date:** November 13, 2013

**Originally Projected Substantial Completion Date:** February 15, 2015

**Currently Projected Substantial Completion Date:** February 27, 2015







# Pedestrian Pathway

## Project Management Team

**City of El Paso's  
Project Manager**

Gilbert Guerrero  
Engineering and Construction Management

**Contractor's  
Project Manager**

Arturo Fuentes  
JAR Concrete, Inc.