



Recommendation/Public Input

- **Planning Division recommendation:** Approval
- **CPC Vote:** Approval Recommendation (5-0)
- **Public Input:** Planning did not receive any phone call or letters in support or opposition to the special permit request.

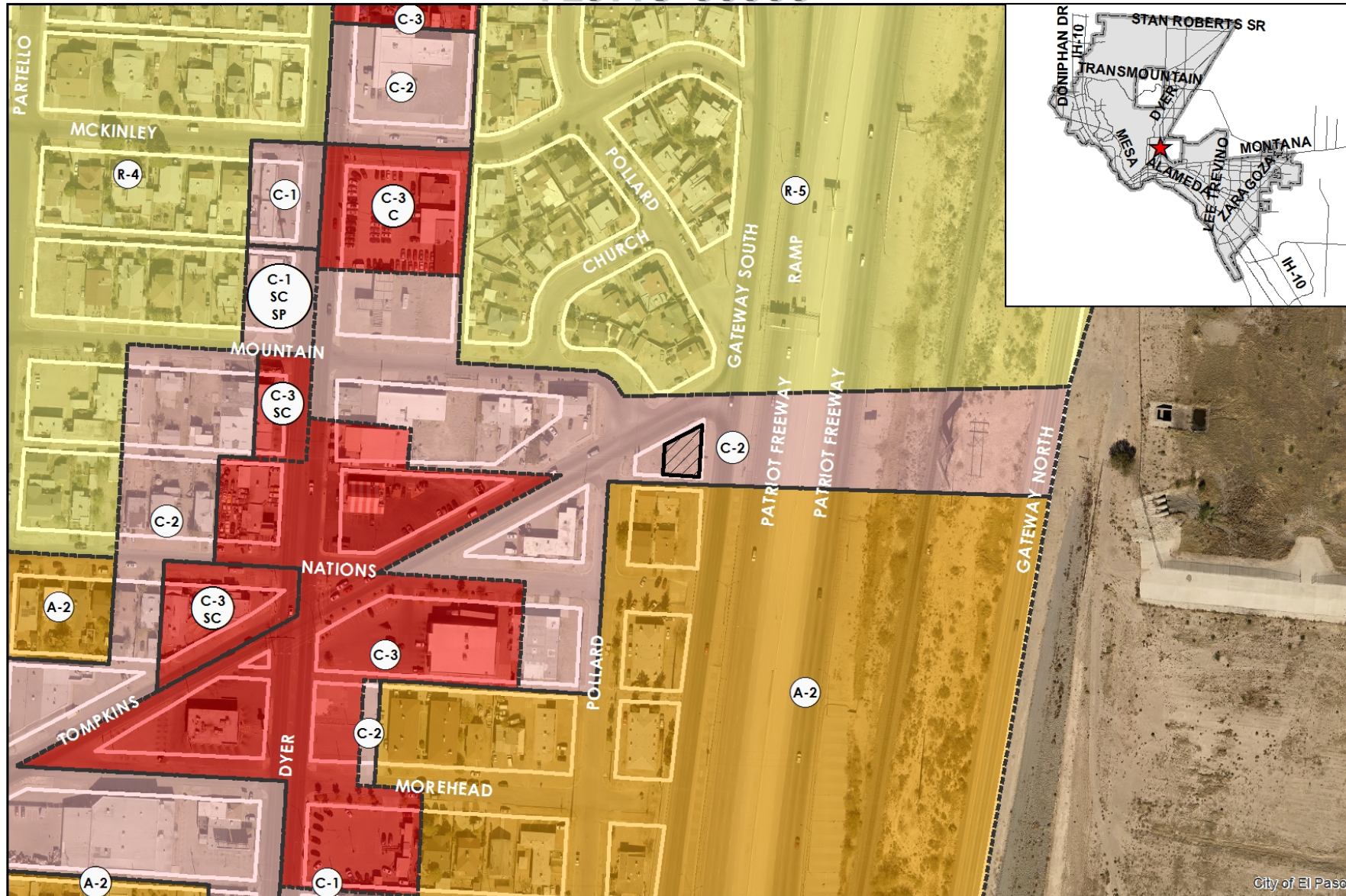
Strategic Goal #3 Promote the Visual Image of El Paso

3.1 Provide business friendly permitting and inspection processes

3.2 Improve the visual impression of the community



PZST18-00003



This map is designed for illustrative purposes only. The features depicted here are approximate and more site-specific studies may be required to draw accurate conclusions. Enlargements of this map to scales greater than its original can induce errors and may lead to misinterpretations of the data. The Planning & Inspections Department Planning Division makes no claim to its accuracy or completeness.



 Subject Property

0 80 160 320 480 640 Feet





PZST18-00003



This map is designed for illustrative purposes only. The features depicted here are approximate and more site-specific studies may be required to draw accurate conclusions. Enlargements of this map to scales greater than its original can induce errors and may lead to misinterpretations of the data. The Planning & Inspections Department Planning Division makes no claim to its accuracy or completeness.



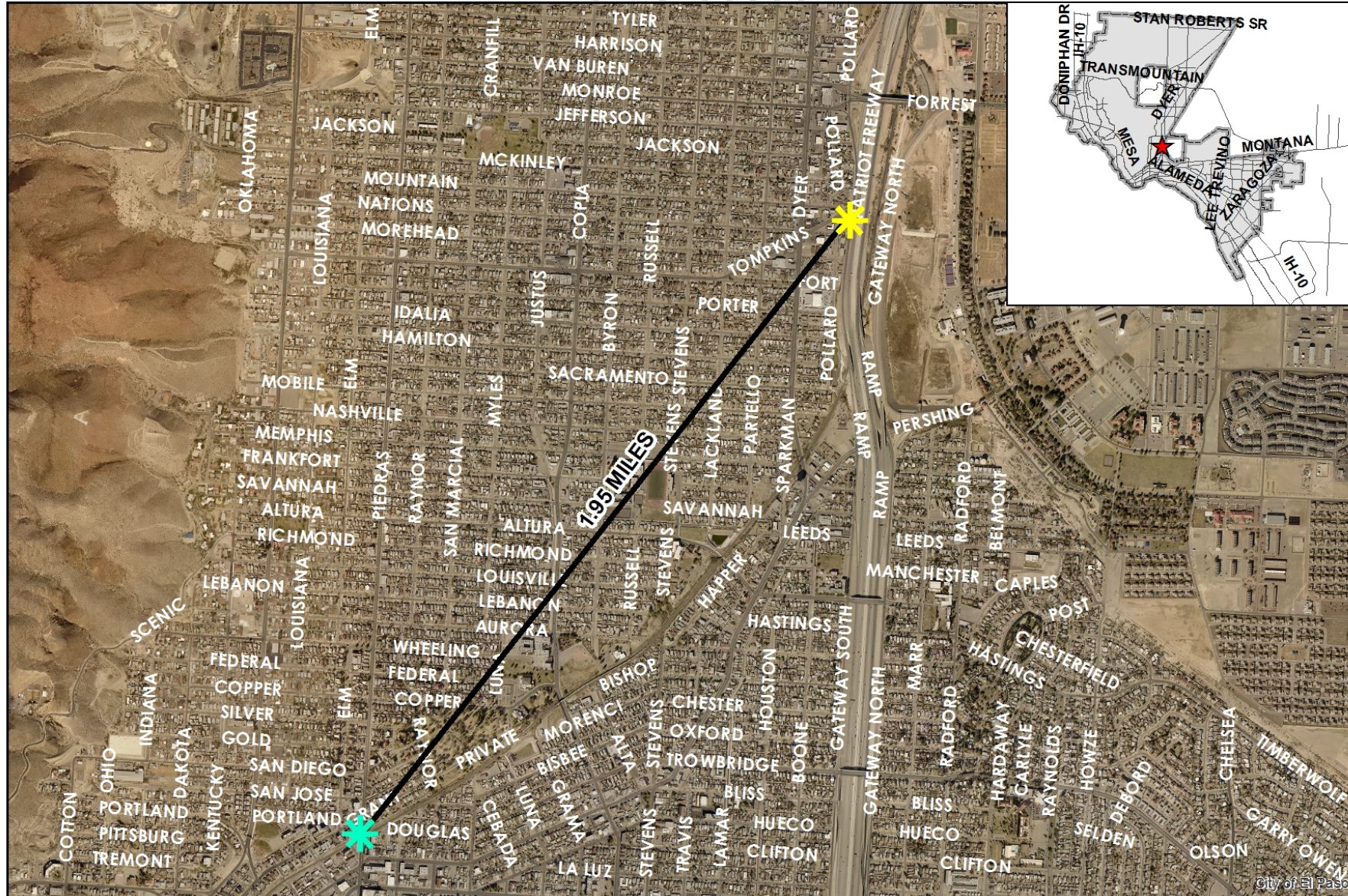
 Subject Property

0 80 160 320 480 640 Feet





PZST18-00003



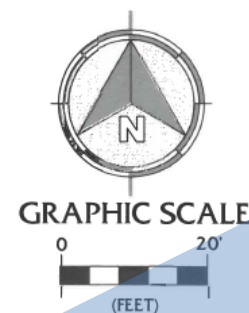
This map is designed for illustrative purposes only. The features depicted here are approximate and more site-specific studies may be required to draw accurate conclusions. Enlargements of this map to scales greater than its original can induce errors and may lead to misinterpretations of the data. The Planning & Inspections Department Planning Division makes no claim to its accuracy or completeness.

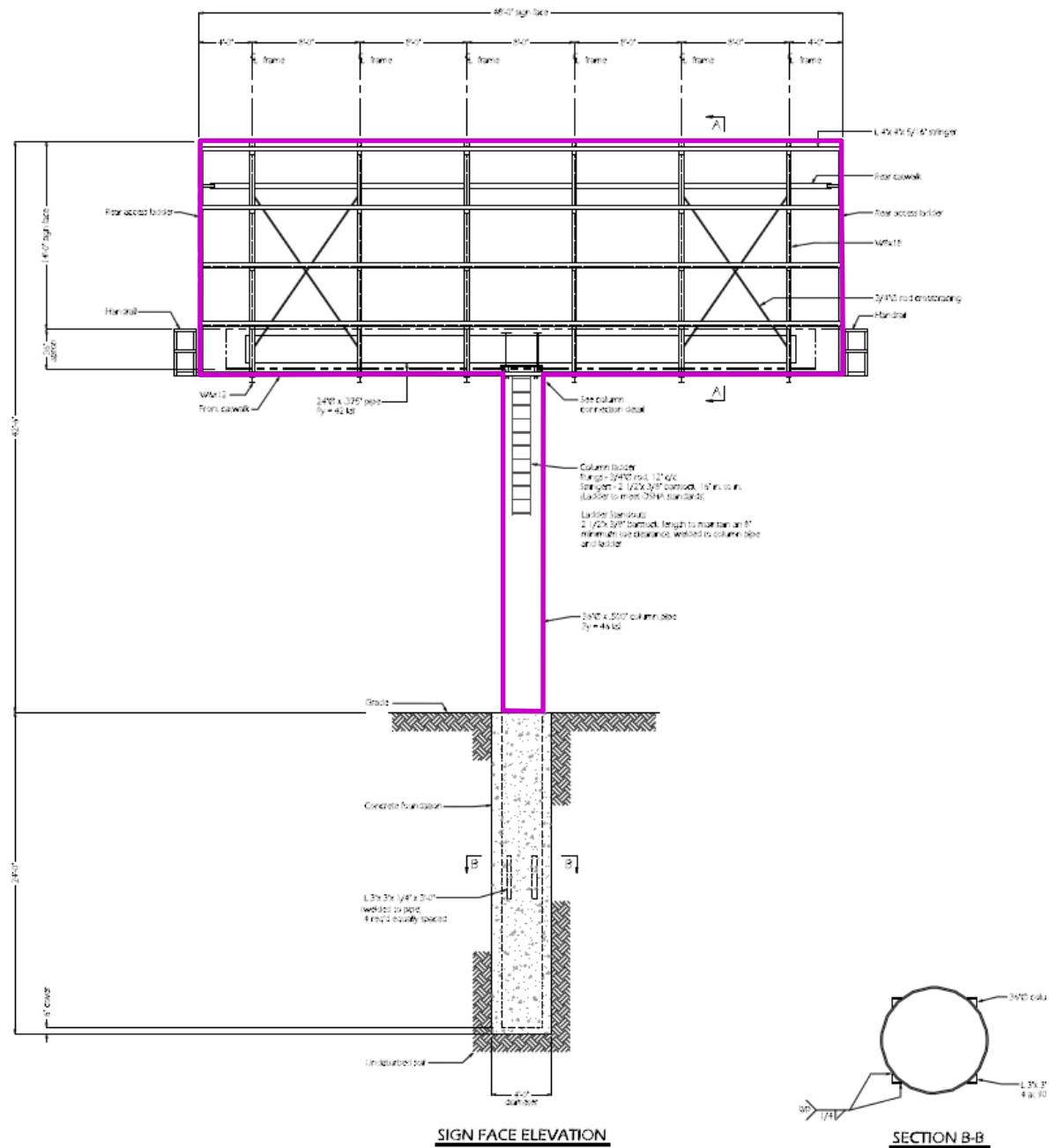


Receiving Parcel

Sending Parcel

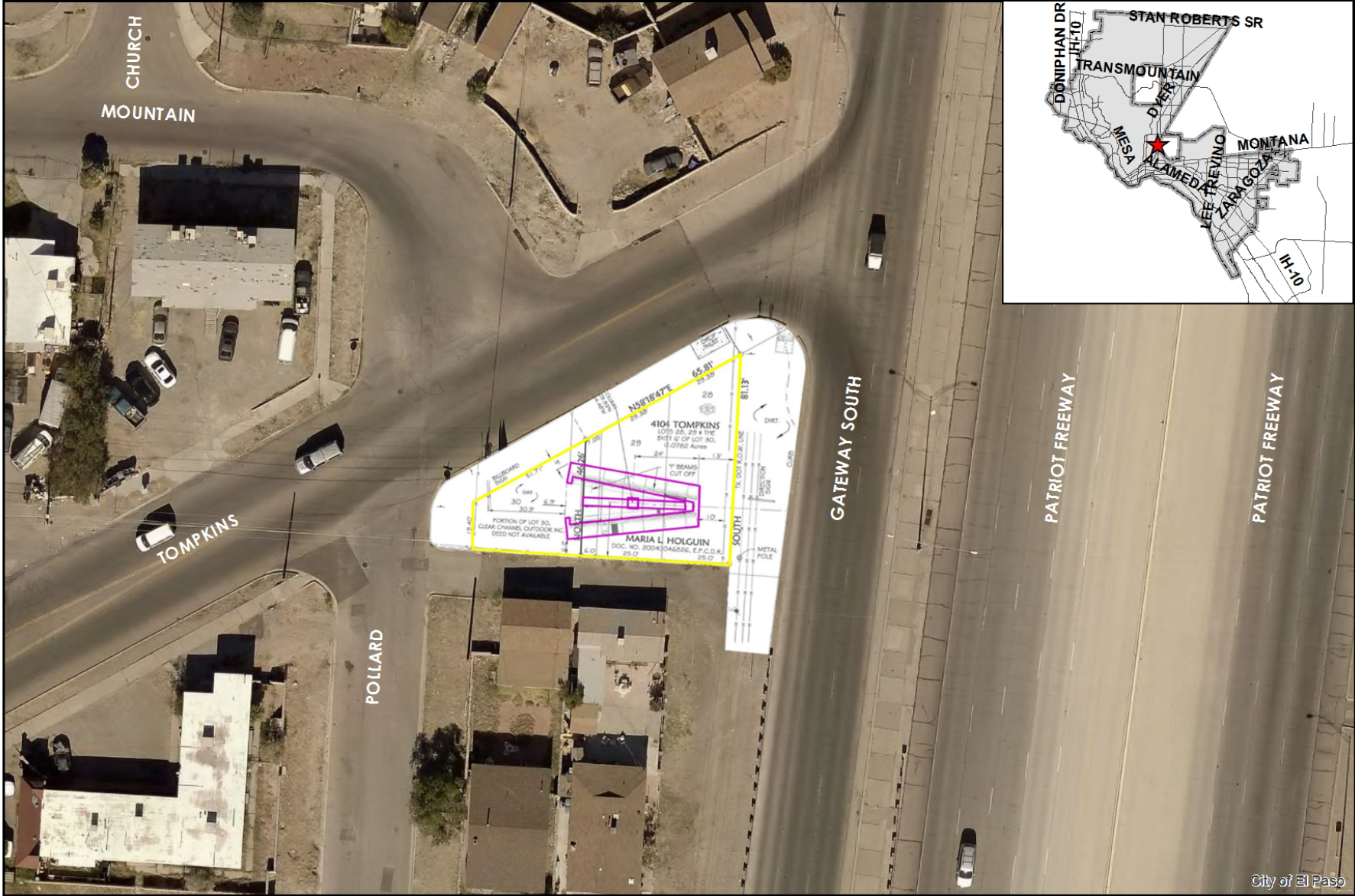




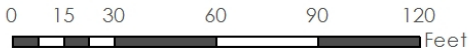




PZST18-00003



This map is designed for illustrative purposes only. The features depicted here are approximate and more site-specific studies may be required to draw accurate conclusions. Enlargements of this map to scales greater than its original can induce errors and may lead to misinterpretations of the data. The Planning & Inspections Department Planning Division makes no claim to its accuracy or completeness.





Sending Parcel



"Delivering Outstanding Services"



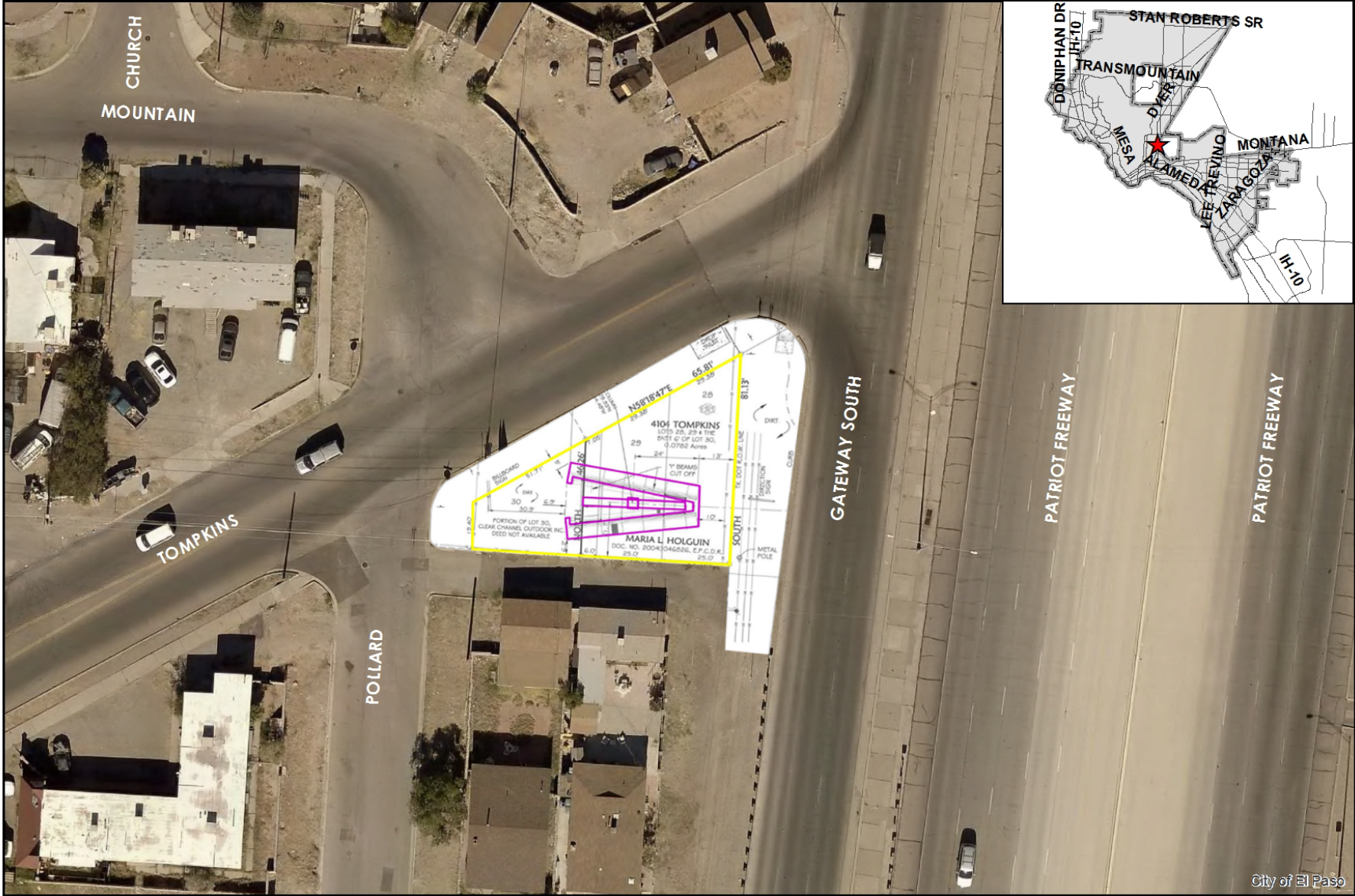
Receiving Parcel







PZST18-00003



This map is designed for illustrative purposes only. The features depicted here are approximate and more site-specific studies may be required to draw accurate conclusions. Enlargements of this map to scales greater than its original can induce errors and may lead to misinterpretations of the data. The Planning & Inspections Department Planning Division makes no claim to its accuracy or completeness.

