

ITEM 14.2 & 14.3

REZONING & COMPREHENSIVE PLAN AMENDMENT

Butterfield Trail



Recommendation | Public Input

2

Development Coordinating Committee recommendation:

Approval of the rezoning and comprehensive plan amendment.

CPC Vote:

Approval Recommendation (7-0)

Public Input:

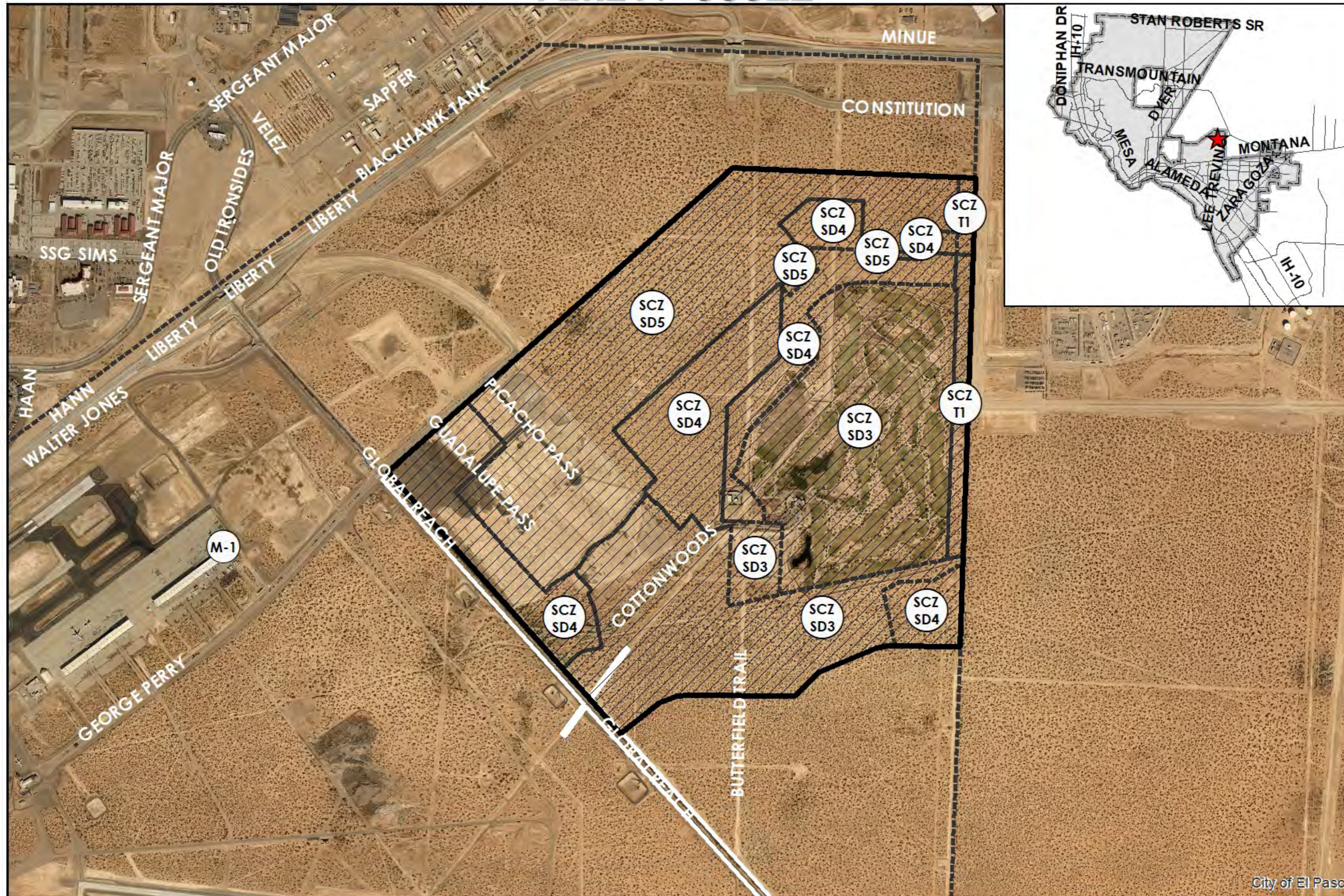
- The Planning Division has not received communication support or opposition to the rezoning request.

Strategic Goal #3 Promote the Visual Image of El Paso

3.1 Provide business friendly permitting and inspection processes

3.2 Improve the visual impression of the community





This map is designed for illustrative purposes only. The features depicted here are approximate and more site-specific studies may be required to draw accurate conclusions. Enlargements of this map to scales greater than its original can induce errors and may lead to misinterpretations of the data. The Planning & Inspections Department Planning Division makes no claim to its accuracy or completeness.



 Subject Property




City of El Paso



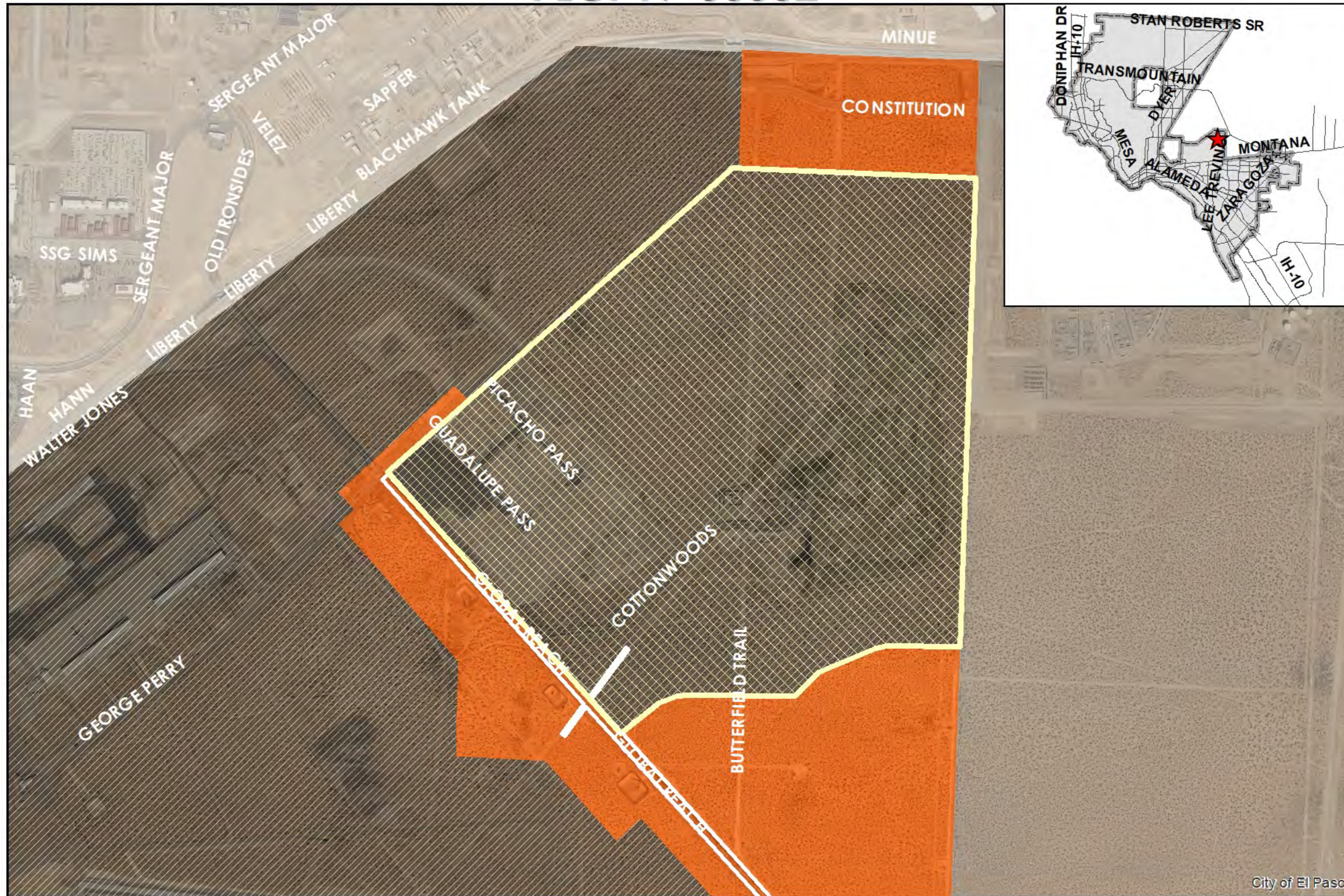
This map is designed for illustrative purposes only. The features depicted here are approximate and more site-specific studies may be required to draw accurate conclusions. Enlargements of this map to scales greater than its original can induce errors and may lead to misinterpretations of the data. The Planning & Inspections Department Planning Division makes no claim to its accuracy or completeness.



 Subject Property




PLCP19-00002

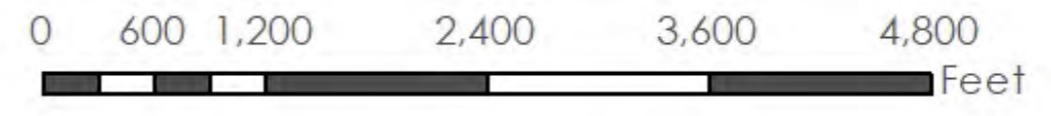


City of El Paso

This map is designed for illustrative purposes only. The features depicted here are approximate and more site-specific studies may be required to draw accurate conclusions. Enlargements of this map to scales greater than its original can induce errors and may lead to misinterpretations of the data. The Planning & Inspections Department Planning Division makes no claim to its accuracy or completeness.



 Subject Property



Future Land Use Designation

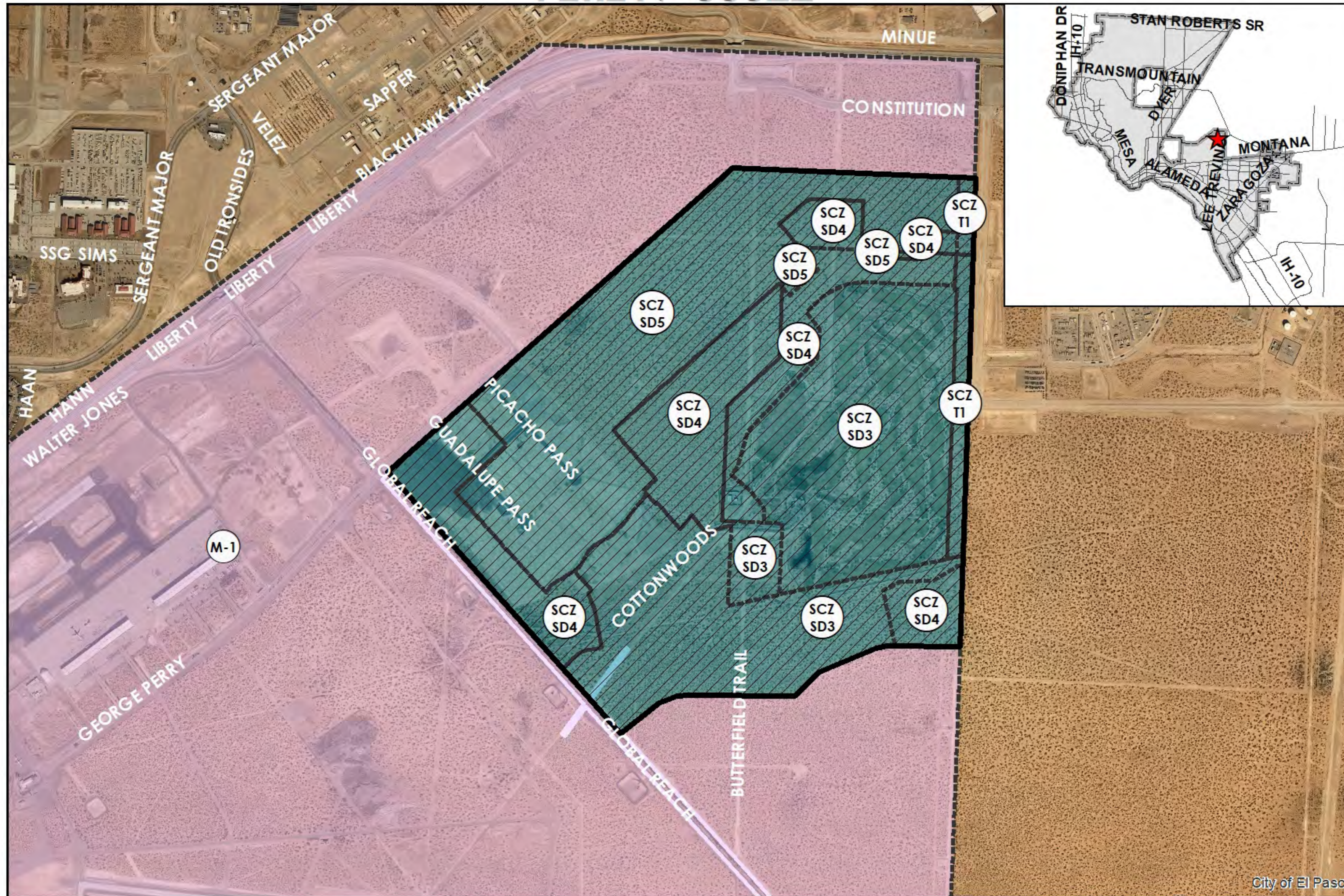
O-7 – Urban Expansion:

Developable land currently owned by the City of El Paso where master planning is underway for potential urban expansion before 2030 using Smart Growth principles.

G-7 – Industrial:


This sector applies to industrial parks, large free-standing industrial uses, refineries, non-military airfields, trucking terminals, and mines, all on large tracts in areas dominated by vehicles.

PZRZ19-00022



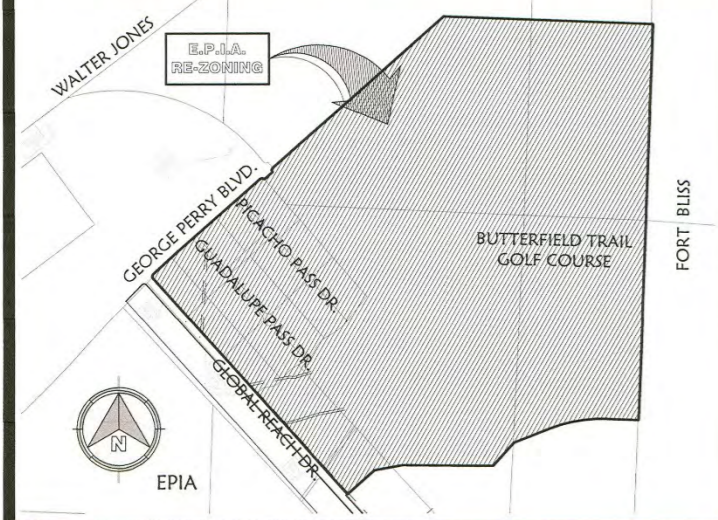
This map is designed for illustrative purposes only. The features depicted here are approximate and more site-specific studies may be required to draw accurate conclusions. Enlargements of this map to scales greater than its original can induce errors and may lead to misinterpretations of the data. The Planning & Inspections Department Planning Division makes no claim to its accuracy or completeness.



 Subject Property



VICINITY MAP SCALE: 1"=2,000'



LEGEND

PROJECT ZONE BOUNDARY:

SUBDIVISION LINE:

SECTION LINE:

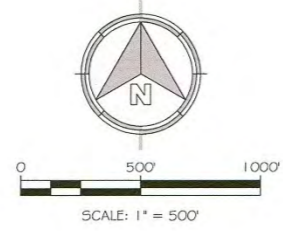
TRACT/LOT LINE:

CENTERLINE OF RIGHT-OF-WAY:

LOT NUMBER:

BLOCK NUMBER:

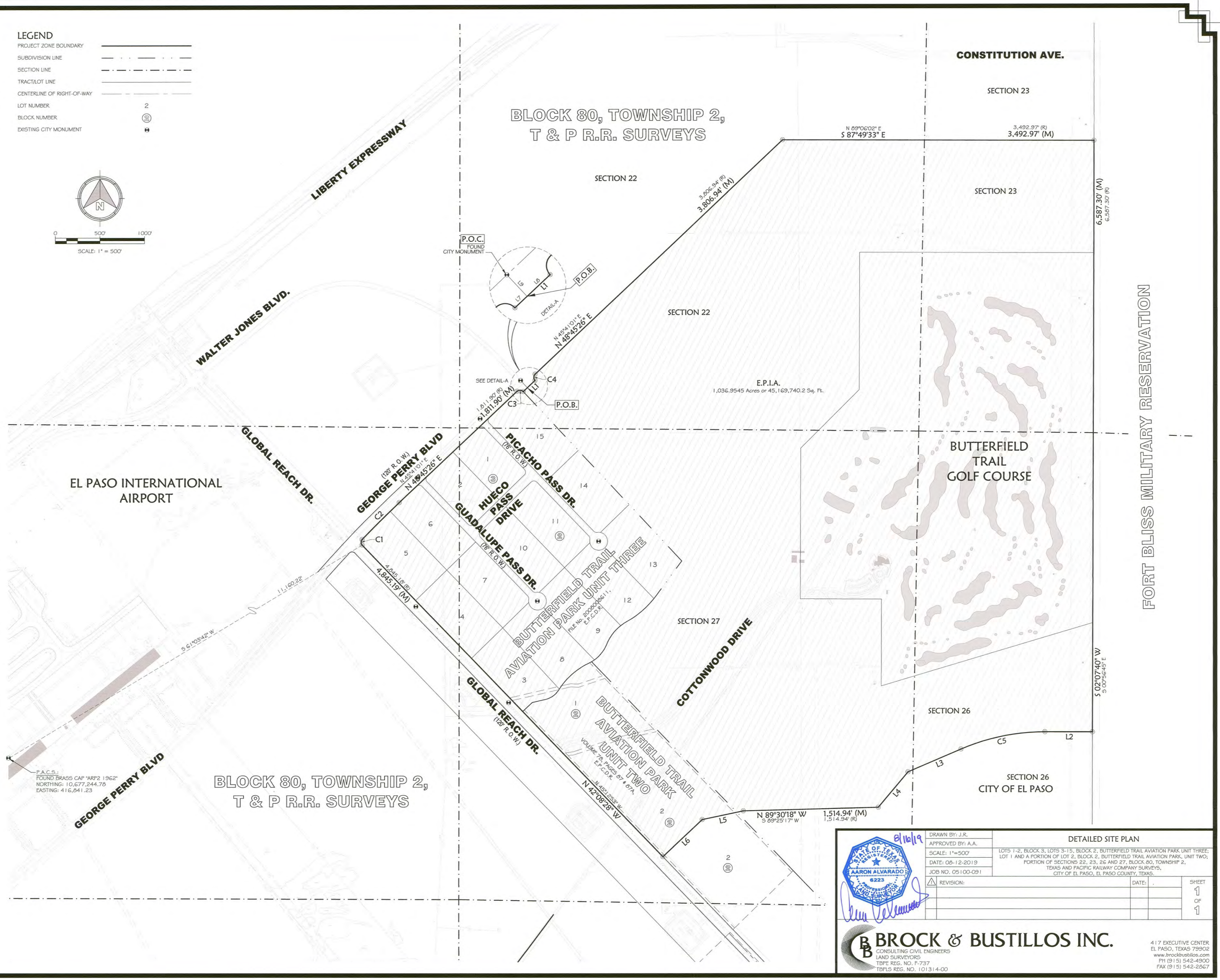
EXISTING CITY MONUMENT:



CURVE TABLE (M)							CURVE TABLE (R)						
CURVE	RADIUS	DELTA ANGLE	ARC LENGTH	CHORD BEARING	CHORD LENGTH	CHORD BEARING	CHORD BEARING	CHORD LENGTH	CHORD BEARING	CHORD LENGTH	CHORD BEARING	CHORD BEARING	CHORD LENGTH
C1	45.00'	88°12'50"	69.28'	N01°50'02"E	62.64'	N01°06'23"W	N01°06'23"W	62.64'	N01°06'23"W	62.64'	N01°06'23"W	N01°06'23"W	62.64'
C2	12475.94'	2°40'54"	584.06'	N47°24'59"E	584.01'	N44°20'54"E	N44°20'54"E	584.01'	N44°20'54"E	584.01'	N44°20'54"E	N44°20'54"E	584.01'
C3	50.00'	90°00'04"	78.54'	S06°14'29"E	70.71'	S09°18'59"E	S09°18'59"E	70.71'	S09°18'59"E	70.71'	S09°18'59"E	S09°18'59"E	70.71'
C4	50.00'	89°59'56"	78.54'	N03°45'27"E	70.71'	N00°41'02"E	N00°41'02"E	70.71'	N00°41'02"E	70.71'	N00°41'02"E	N00°41'02"E	70.71'
C5	2377.00'	23°21'09"	962.81'	S60°26'49"W	962.12'	S77°22'23"W	S77°22'23"W	962.12'	S77°22'23"W	962.12'	S77°22'23"W	S77°22'23"W	962.12'

LINE TABLE(M)				LINE TABLE(R)				
LINE #	BEARING	DISTANCE	BEARING	DISTANCE	BEARING	DISTANCE	BEARING	DISTANCE
L1	N48°45'27"E	180.01'	N45°41'02"E	180.00'	N45°41'02"E	180.00'	N45°41'02"E	180.00'
L2	N87°52'37"W	533.55'	N89°02'58"W	533.55'	N89°02'58"W	533.55'	N89°02'58"W	533.55'
L3	S69°46'14"W	645.72'	S63°41'49"W	645.72'	S63°41'49"W	645.72'	S63°41'49"W	645.72'
L4	S41°57'56"W	516.80'	S38°53'31"W	516.80'	S38°53'31"W	516.80'	S38°53'31"W	516.80'
L5	S60°04'59"W	470.45'	S77°00'34"W	470.45'	S77°00'34"W	470.45'	S77°00'34"W	470.45'
L6	S48°48'51"W	604.45'	S45°44'06"W	604.45'	S45°44'06"W	604.45'	S45°44'06"W	604.45'
L7	N48°45'26"E	62.07'	N45°41'02"E	62.06'	N45°41'02"E	62.06'	N45°41'02"E	62.06'
L8	N48°45'26"E	117.94'	N45°41'02"E	117.94'	N45°41'02"E	117.94'	N45°41'02"E	117.94'
L9	S41°14'33"E	110.00'	S44°18'58"E	110.00'	S44°18'58"E	110.00'	S44°18'58"E	110.00'

- SUPPLEMENTAL NOTES:**
1. BASIS OF BEARING IS THE TEXAS STATE PLANE COORDINATE SYSTEM, CENTRAL ZONE, No. 4203, NORTH AMERICAN DATUM OF 1983 (N.A.D. 83), DETERMINED VIA THE EL PASO COUNTY VIRTUAL REFERENCE STATION (V.R.S.) NETWORK.
- REFERENCE DOCUMENTS:**
1. CITY OF EL PASO ORDINANCE No. 017569 FILED APRIL 27, 2011, CITY CLERK'S DEPARTMENT.
 2. SUBDIVISION PLAT FOR BUTTERFIELD TRAIL AVIATION PARK UNIT THREE FILED IN DOCUMENT No. 20080066111 OF THE EL PASO COUNTY PLAT RECORDS.
 3. SUBDIVISION PLAT FOR BUTTERFIELD TRAIL AVIATION PARK UNIT TWO FILED IN BOOK 78, PAGES 87 & 87A OF THE EL PASO COUNTY PLAT RECORDS.
 4. BUTTERFIELD TRAIL GOLF COURSE SITE PLAN PREPARED BY MINJARES MORA ARCHITECTS INC., FOR THE CITY OF EL PASO, DATED JULY 13, 2007, JOB No.0409.



DETAILED SITE PLAN

LOTS 1-2, BLOCK 3, LOTS 3-15, BLOCK 2, BUTTERFIELD TRAIL AVIATION PARK UNIT THREE; LOT 1 AND A PORTION OF LOT 2, BLOCK 2, BUTTERFIELD TRAIL AVIATION PARK UNIT TWO; PORTION OF SECTIONS 22, 23, 26 AND 27, BLOCK 80, TOWNSHIP 2, TEXAS AND PACIFIC RAILWAY COMPANY SURVEYS, CITY OF EL PASO, EL PASO COUNTY, TEXAS.

DRAWN BY: J.K.
APPROVED BY: A.A.
SCALE: 1"=500'
DATE: 06-12-2019
JOB NO. 05100-091

REVISION: _____ DATE: _____

SHEET 1 of 1

BROCK & BUSTILLOS INC.
CONSULTING CIVIL ENGINEERS
LAND SURVEYORS
TEXAS REG. NO. 87237
TEXAS REG. NO. 101314-00

417 EXECUTIVE CENTER
EL PASO, TEXAS 79902
www.brockandbustillos.com
PH (915) 542-4900
FAX (915) 542-2267

Apr 15, 2019 10:18 AM
 S:\Projects\2019\05100-091 - EPIA - FIRM AMENDMENT REZONING\05100-091 - CD\005 LOC\091 - RE-ZONE PLAN.dwg
 Aaron Alvarado
 6223

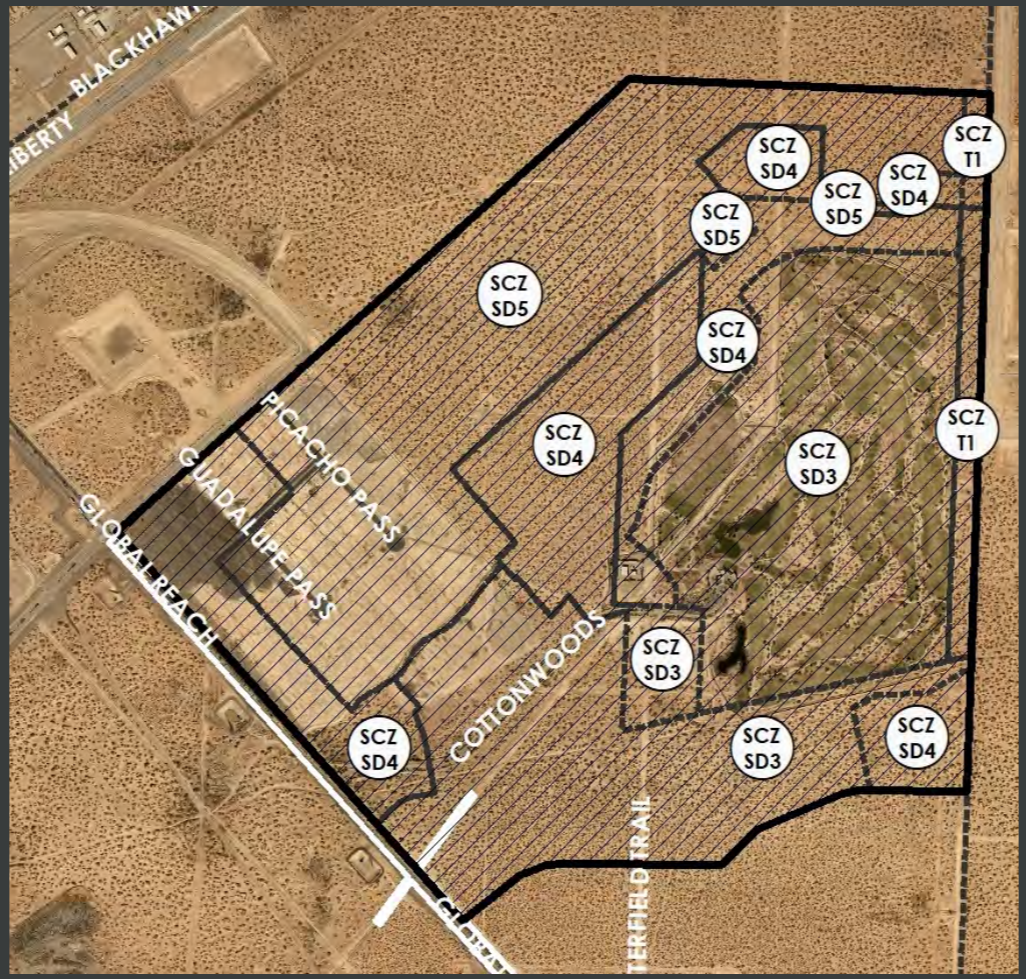




N



W



E



S



THANK YOU

