

**Public Hearing December 17<sup>th</sup> 2019**



# Title 15 Proposed Amendment



***Strategic Plan Goal:***

- 4) Enhance El Paso's Quality of Life through Recreational, Cultural, and Educational Environments***
- 6) Set the Standard for Sound Governance and Fiscal Management***
- 7) Enhance and Sustain El Paso's Infrastructure Network***

# TABLE OF CONTENTS

- I. SUMMARY OF FUNDED PROGRAMS**
  - A. 2012 Street CIP**
  - B. \$7M Annual Resurfacing**
  - C. 2018 Capital Plan – 5 CRITICAL ROADWAYS**
  - D. 2019 Capital Plan- TOP 25 ARTERIAL PROGRAM**
- II. PCI Study- Street Maintenance Funds Needed**
- III. PSB INFRASTRUCTURE FRANCHISE FEE**

<b>STREET RELATED FUNDING</b>		
<b>PROGRAM</b>	<b>AMOUNT</b>	<b>YEAR APPROVED</b>
2012 Street CIP	\$ 218,000,000	2012
2017 Capital Plan	\$ 13,300,000	2017
2018 Capital Plan	\$ 45,961,667	2017
2019 Capital Plan	\$ 64,258,539	2018
<b>TOTAL APPROVED TO DATE</b>	<b>\$ 341,520,206</b>	
<b>Pay As You Go</b>		
\$7M Residential Street Resurfacing	\$ 7,000,000	2019- Annual

- **Street Maintenance is a high priority for our community**
- **The inventory for roads in the City shows 2,500 centerline miles**
  - **\$44 Million is the estimated annual investment in order to keep the street Pavement Condition Index of 70 (out of 100)**
- **July 2019 – City Council directed staff to:**
  - **Continue to look for funding opportunities for Street Maintenance**
  - **Put a program together for a vote and/or options for additional revenue for street maintenance. Direction reinforced on November 25, 2019**
- **Using annual operating funds for resurfacing is a best practice**

# PCI

---

# PCI – What is it?

- Pavement Condition Index (PCI) is data used to assess the general condition of pavement
- The data is used as a tool for initial prioritization
- Requires regular evaluation to updating conditions
- Provides forecasting which can assist and plan needed future improvements

# El Paso Results

PCI Range	Condition Description	Percent of Network
86-100	Good	26.75%
71-85	Satisfactory	22.72%
56-70	Fair	17.06%
41-55	Poor	17.59%
26-40	Very Poor	10.46%
11-25	Serious	5.00%
0-10	Very Serious	0.42%
	TOTAL	100%

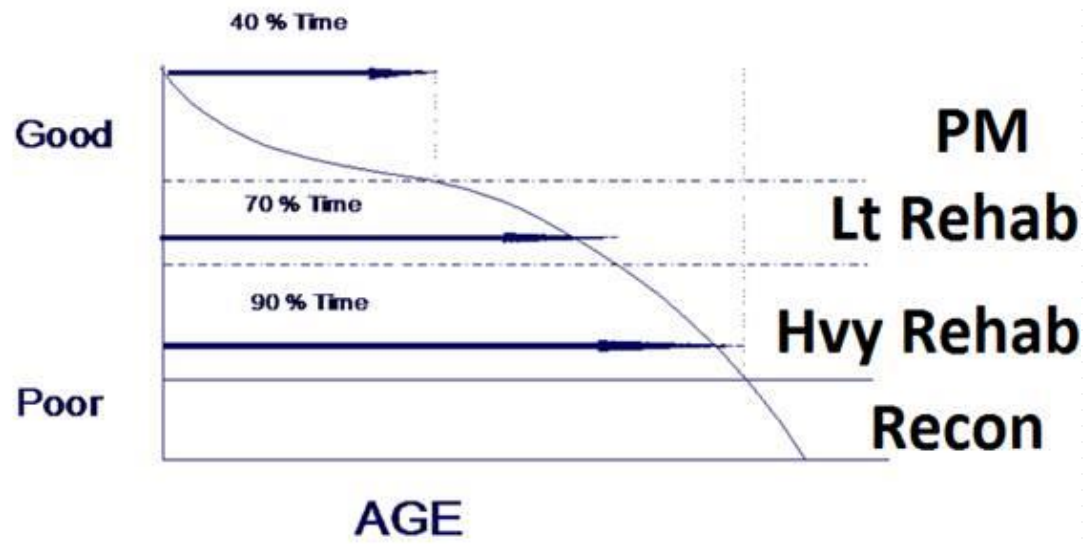
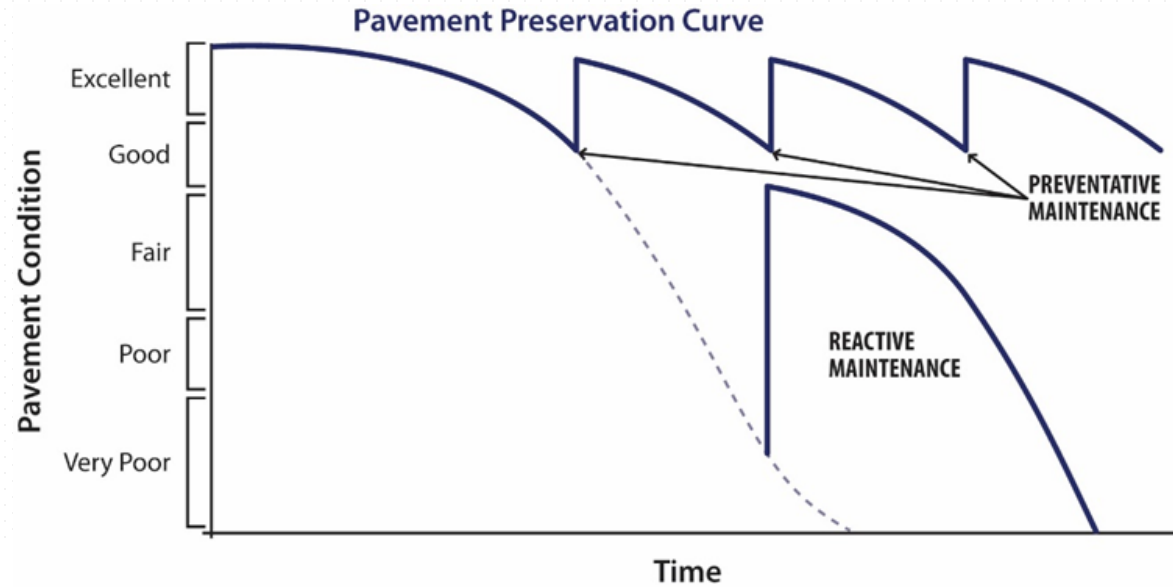
**49.5% of the street inventory is Satisfactory or higher;  
50.5% of network is Fair or worse**

## Best Practices

- Useful life of a road is 25 years
- 4% of the street inventory every year
- Average PCI at 70 or above should be our goal
- Spend a portion of the budget to keep good pavement in good condition
- Have a plan to bring poor roads to fair condition and above
- Find cost effective treatments at designated times to provide desired level of service

# Best Practices

PCI

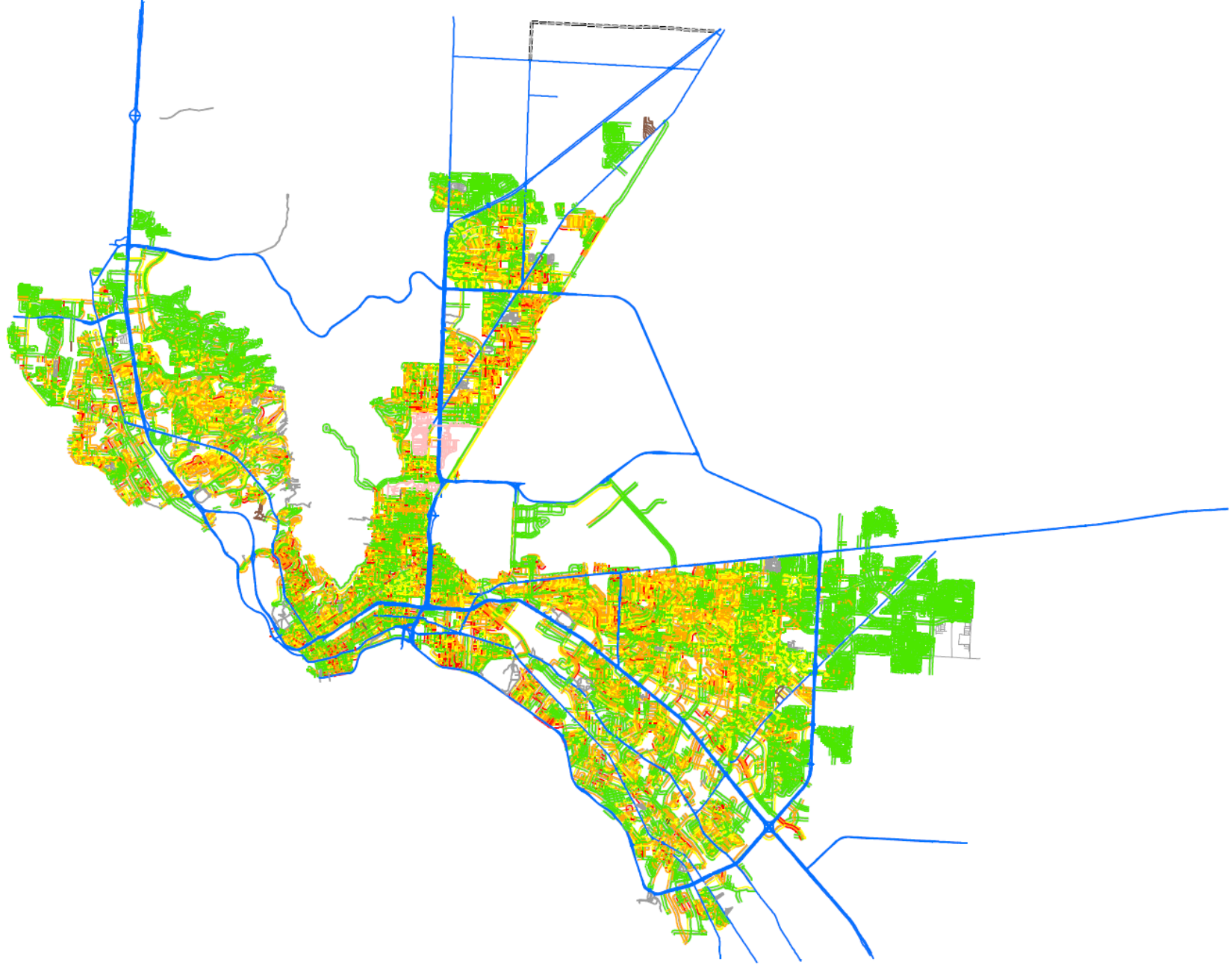


**SEALS/CRACK SEALS**  
**MILL AND OVERLAY**

**SPOT FULL DEPTH REPAIRS AND MILL AND OVERLAY**  
**RECONSTRUCTION**

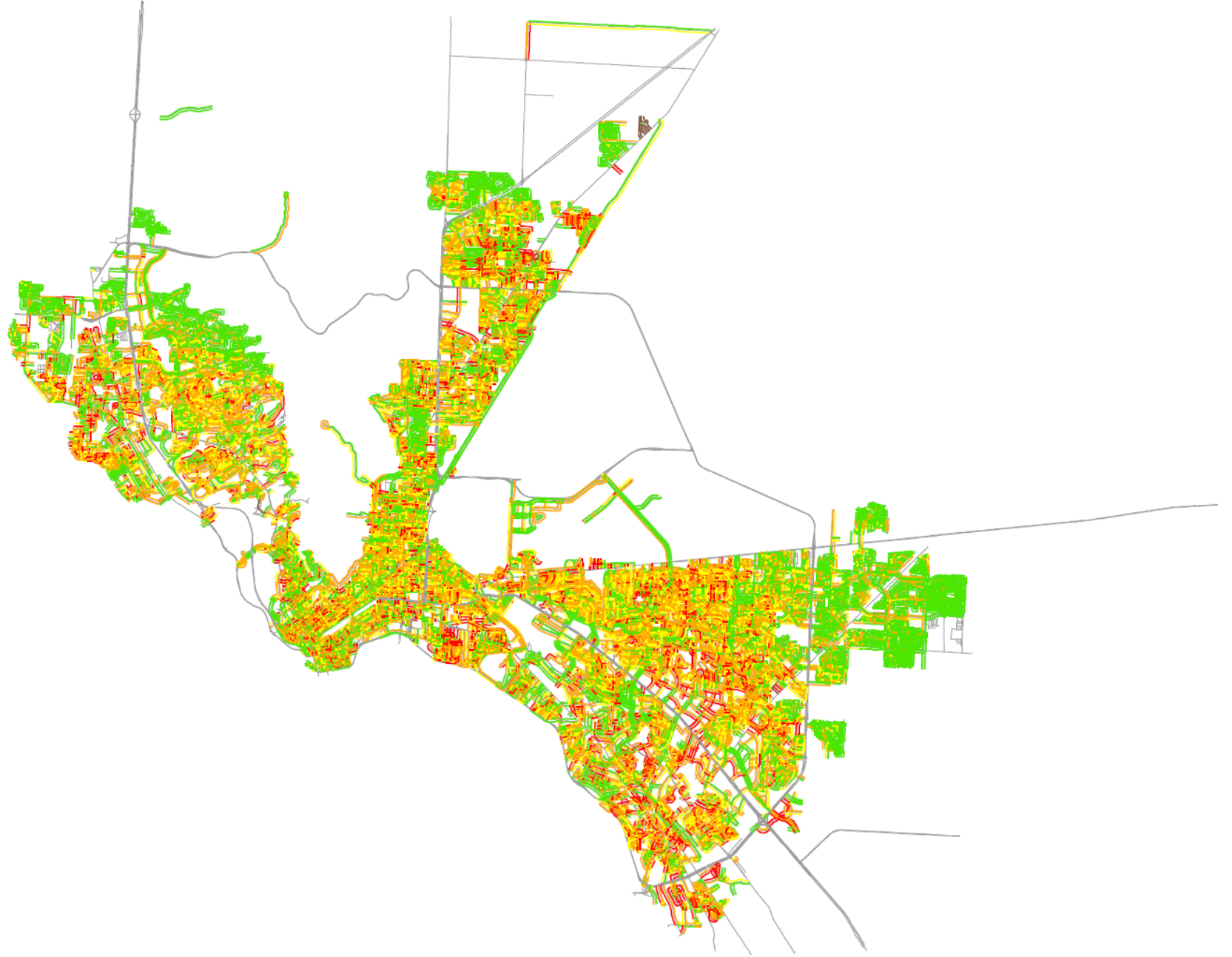
# Historical Information

**2008 PCI =  
75.54 avg.**



## PCI

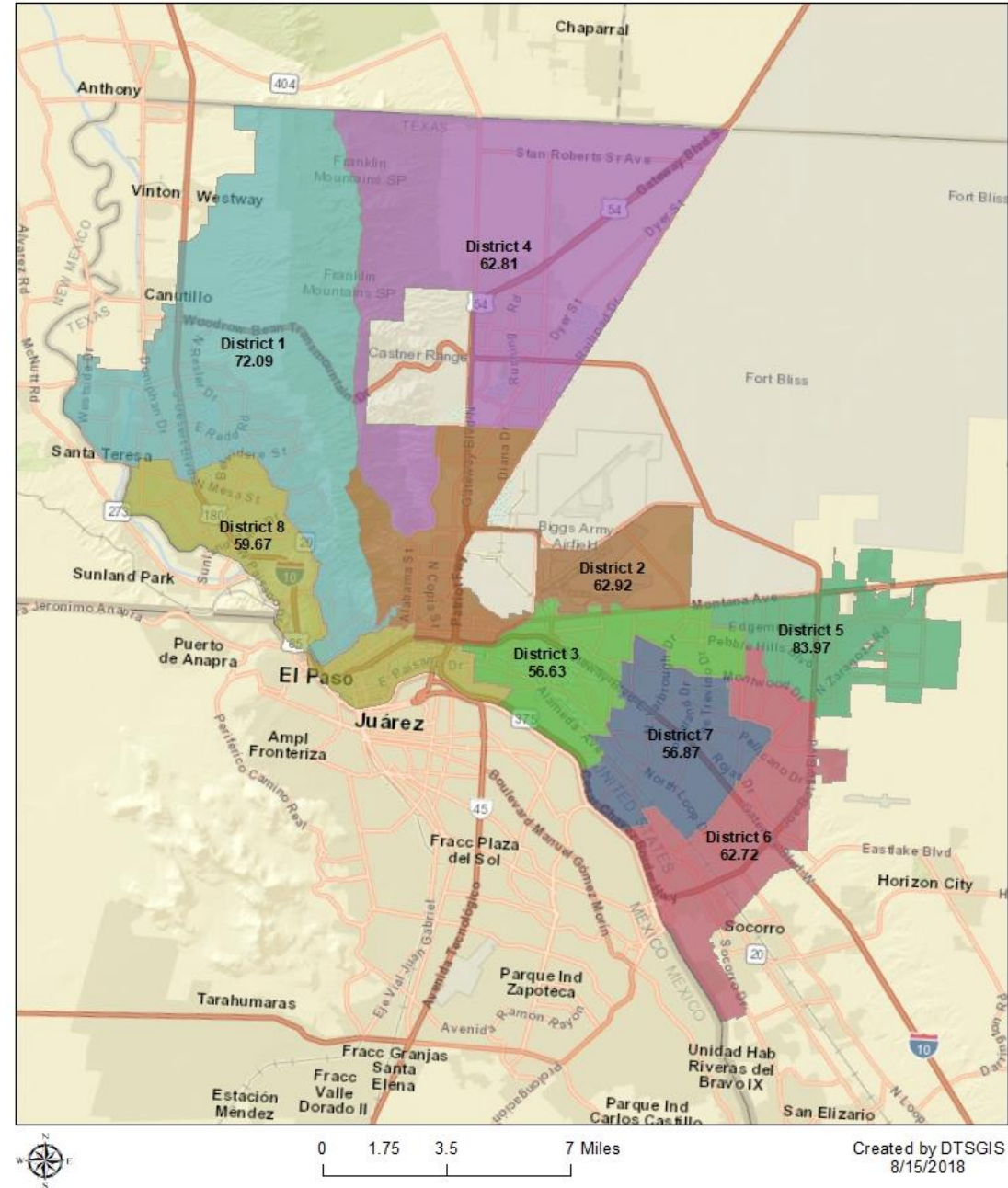
**2018 PCI =  
65.42 avg.**



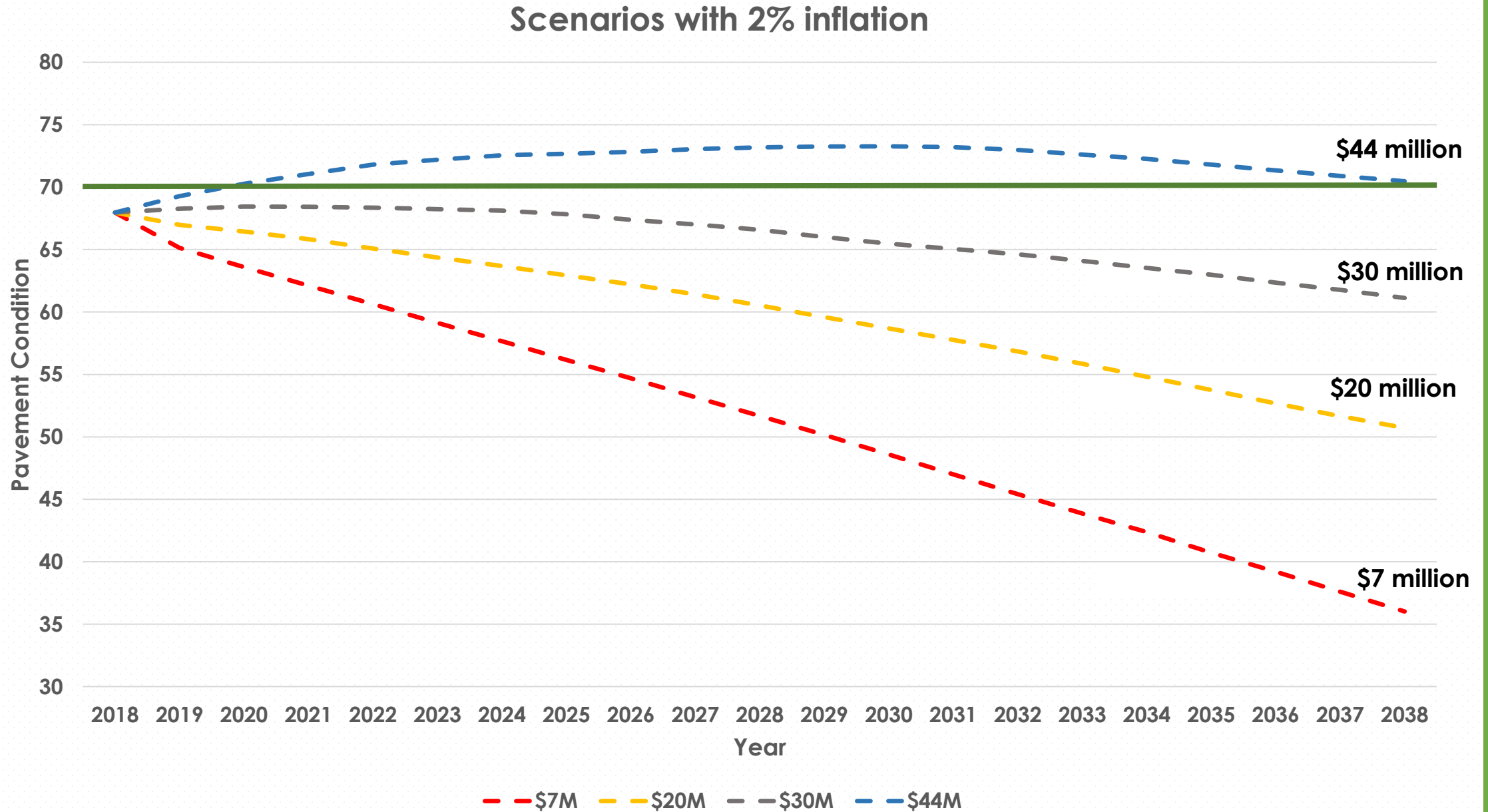
# Average PCI by District

PCI

District	Average PCI
1	72.09
2	62.92
3	56.63
4	62.81
5	83.97
6	62.72
7	56.87
8	59.67



# Scenarios



# PSB Infrastructure Franchise Fee

---

## **PSB Infrastructure Franchise Fee**

- **A fee imposed by the City of El Paso on EP Water to compensate for wear and tear on streets by the utility's vehicles and the use of streets and rights of way for utility pipelines.**

## **PSB Infrastructure Franchise Fee**

- **Currently - \$3,550,000 is being collected through the budget resolution.**
- **The current funding is allocated to the general fund for street maintenance operations.**
- **An Engineering Analysis completed evaluated the various users of the Street so that users contribute their fair share for street maintenance.**
- **PSB is one of the users of the street right of way and the operations of the Water and Wastewater cause a big impact on the pavement condition.**
  - **Pavement Cuts**
  - **Heavy equipment operating on pavement**
- **An additional \$3,000,000 is being proposed to be dedicated for street resurfacing.**

## **PSB Franchise Fee**

- **The additional annual \$3,000,000 will bring the total Infrastructure Franchise Fee to \$6,550,000**
- **The modified franchise would take effect on March 1, 2020 as part of the new PSB budget.**
- **Streets to be resurfaced with the additional funds will be presented to City Council following a recommendation by staff based on the PCI Study. Staff to target collectors with initial funds.**
- **The proposed funds would bring the total annual funding total for Street Resurfacing to \$10,000,000 of dedicated street maintenance dollars.**

## **PSB Infrastructure Franchise Fee**

- **Impact of franchise fee on residential EPWater customers**
  - **Franchise fee charges are based on meter size**
  - **Most residential customers have a  $\frac{3}{4}$ " meter, and the average water use is 11 CCF**
  - **Typical Residential Bill is assessed a monthly charge of 77 cents**
  - **Recommended change to would increase a Typical Residential Bill by 60 cents per month**



# Recommendation

- **Approve Title 15 Amendment – WITH FLOOR AMENDMENTS**
  1. **Increase Franchise Fee to El Paso Water to \$6,550,000 (Capped Amount)**

## Separate related Agenda Items

- **Streets to be resurfaced by the new funds.**
- **Budget Resolution: Allocate \$3 M of the Franchise for Street Resurfacing**

**25**  
**BY 2025**  
*VisionNEXT*



**20** **IN**  
**2020**

**POWER IN THE VISION**



**25**

**BY 2025**

*Vision***NEXT**



**THANK YOU**